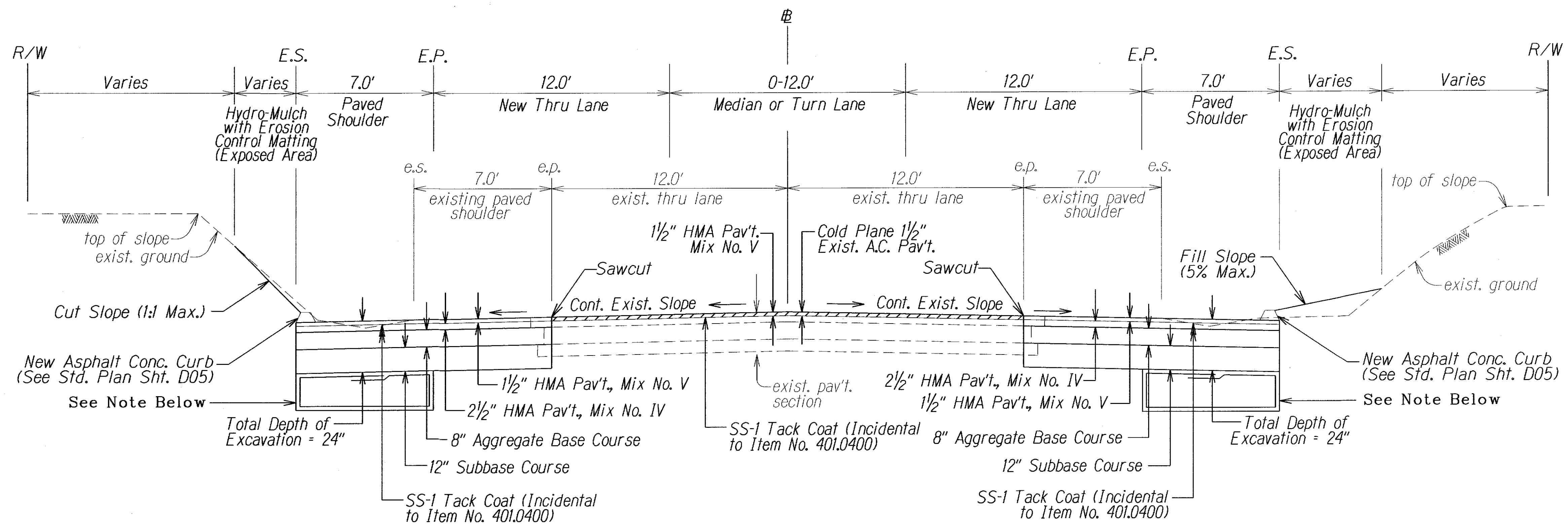
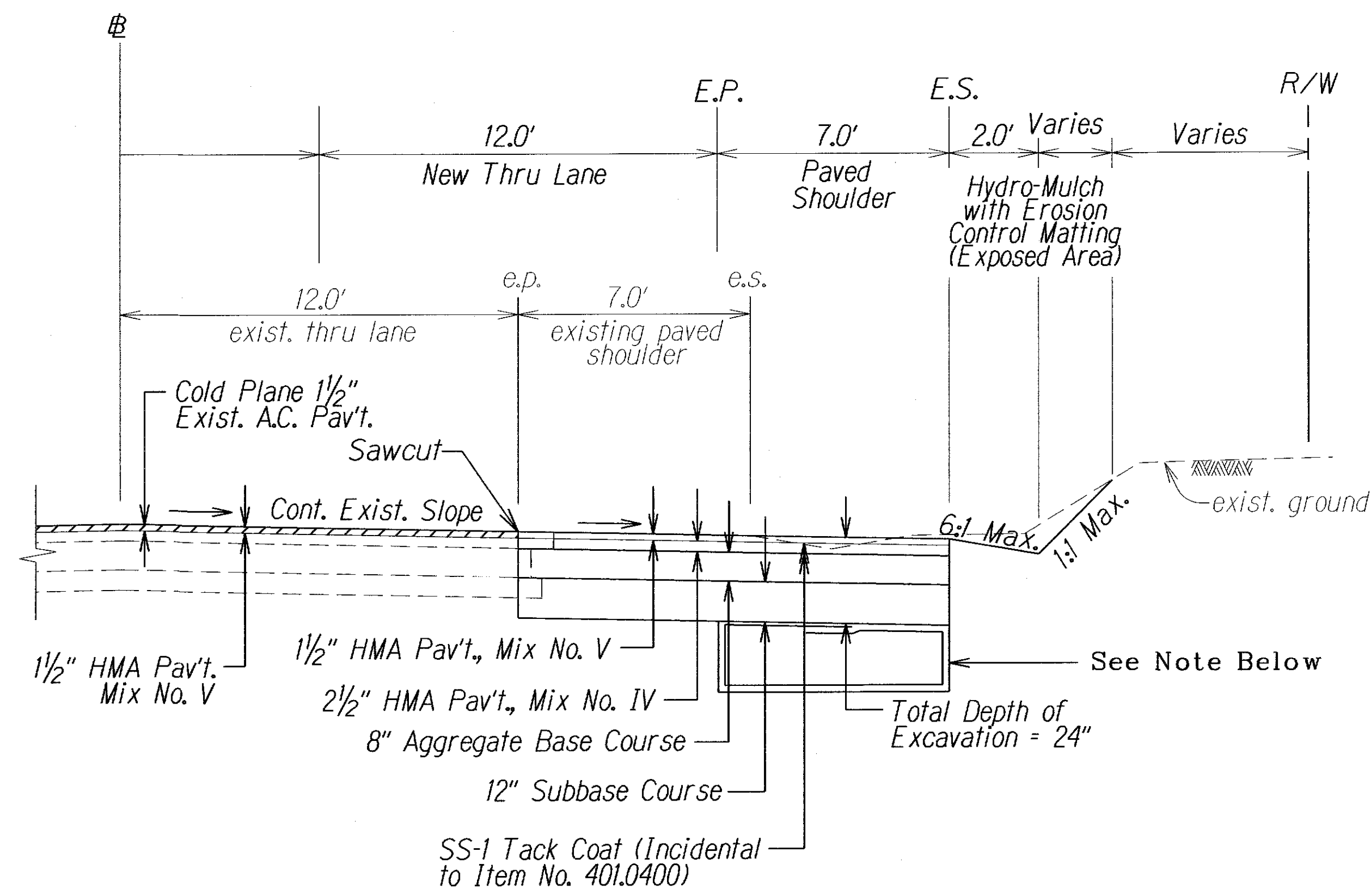


FED. ROAD DIST. NO.	STATE	PROJ. NO.	FISCAL YEAR	SHEET NO.	TOTAL SHEETS
HAWAII	HAW.	56D-01-13	2013	ADD. 6	23



△ TYPICAL SECTION @ PAVEMENT W/ CURB
Not to Scale



△ TYPICAL SECTION @ PAVEMENT W/O CURB
Not to Scale

LEGEND FOR AS-BUILT POSTINGS	
	Squiggly line for as-built deletion
	Double line for as-built deletion
Roadway	Text for as-built posting

6/17/13	Typical Section @ Pavement w/ Curb
6/17/13	Typical Section @ Pavement w/o Curb
DATE	REVISION

STATE OF HAWAII DEPARTMENT OF TRANSPORTATION HIGHWAYS DIVISION	
TYPICAL SECTIONS	
KUHIO HIGHWAY	
Intersection Improvements at Kapaka Street	
Project No. 56D-01-13	
Not to Scale	Date: June 2013
SHEET No. 1 OF 2 SHEETS	

Note:
Additional Excavation
Max. Depth 24". Subbase to be
wrapped in Mirafi 170 N.
See sheets Add. 15&16 for
location & depth.

ORIGINAL PLAN	DATE
SURVEY PLOTTED BY	
DRAWN BY	
DESIGNED BY	
QUANTITIES BY	
CHECKED BY	
NOTE BOOK	
4/10/13	

"AS-BUILT"

ADD. 6

