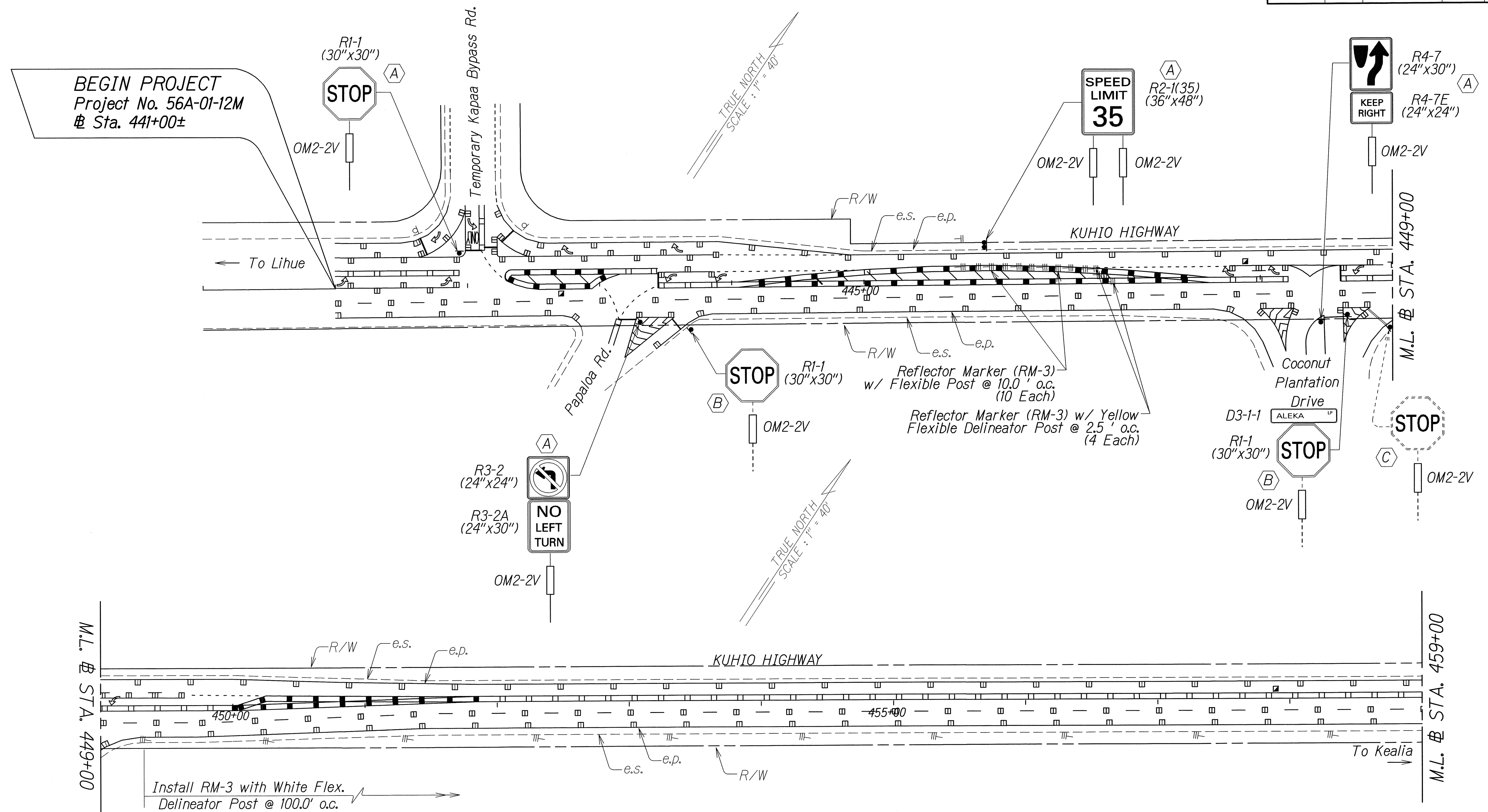


FED. ROAD DIST. NO.	STATE	PROJ. NO.	FISCAL YEAR	SHEET NO.	TOTAL SHEETS
HAWAII	HAW.	56A-01-12M	2012	14	22



BEGIN PROJECT
Project No. 56A-01-12M
@ Sta. 441+00±

Install RM-3 with White Flex.
Delineator Post @ 100.0' o.c.

ORIGINAL PLAN	DATE
SURVEY PLOTTED BY	
DRAWN BY	
DESIGNED BY	
QUANTITIES BY	
CHECKED BY	

STATE OF HAWAII
DEPARTMENT OF TRANSPORTATION
HIGHWAYS DIVISION

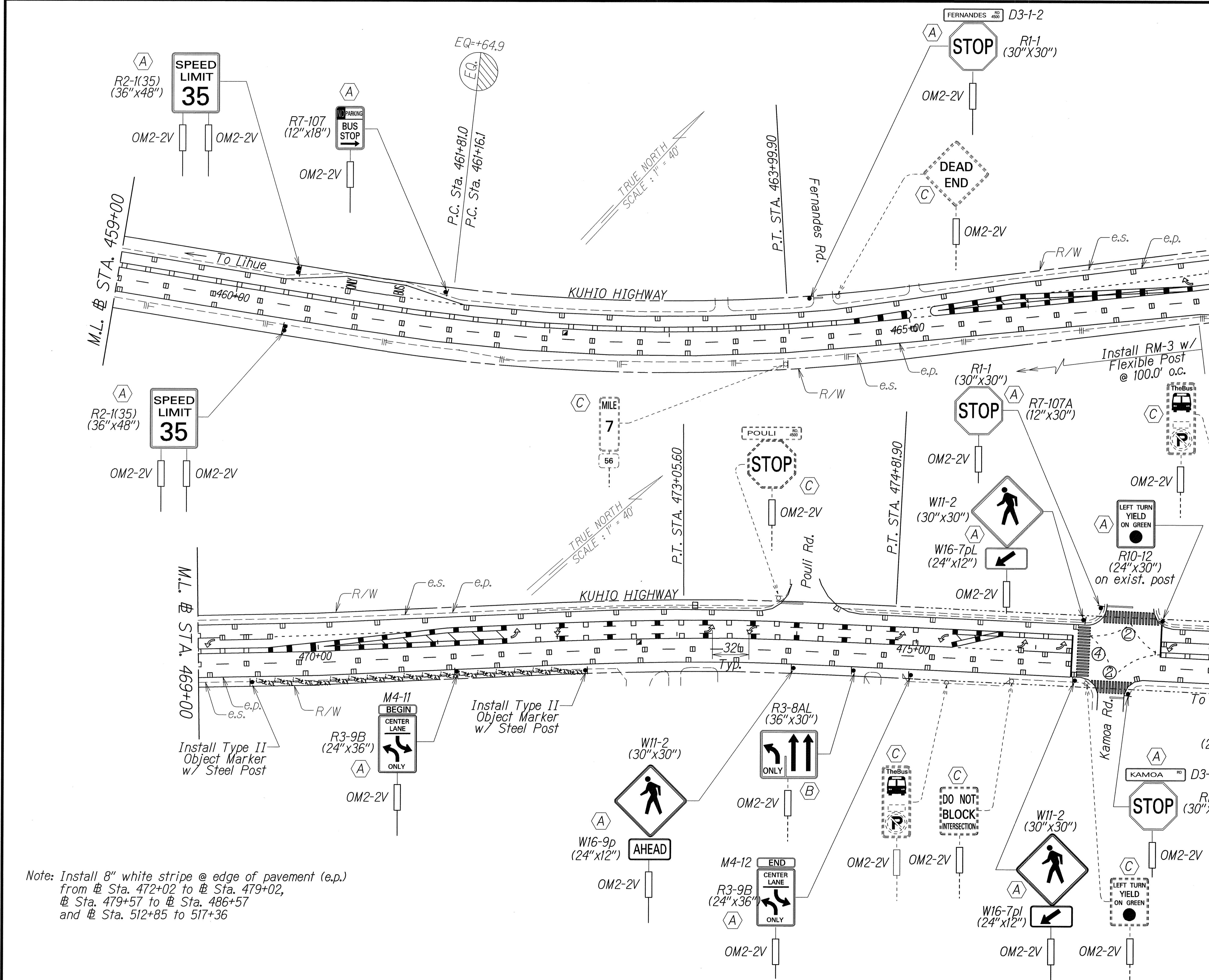
PAVEMENT MARKING
TRAFFIC SIGNING PLAN

KUHIO HIGHWAY RESURFACING
Temporary Kapaa Bypass Rd. to Waikaea Br.
Project No. 56A-01-12M

Scale: 1" = 40' Date: May 2012

SHEET No. T2 OF 6 SHEETS

FED. ROAD DIST. NO.	STATE	PROJ. NO.	FISCAL YEAR	SHEET NO.	TOTAL SHEETS
HAWAII	HAW.	56A-01-12M	2012	15	22



Note: Install 8" white stripe @ edge of pavement (e.p.) from Sta. 472+02 to Sta. 479+02, Sta. 479+57 to Sta. 486+57 and Sta. 512+85 to 517+36

DESIGNED BY	DATE
TRACED BY	
DESIGNED BY	
QUANTITIES BY	
CHECKED BY	

STATE OF HAWAII
DEPARTMENT OF TRANSPORTATION
HIGHWAYS DIVISION

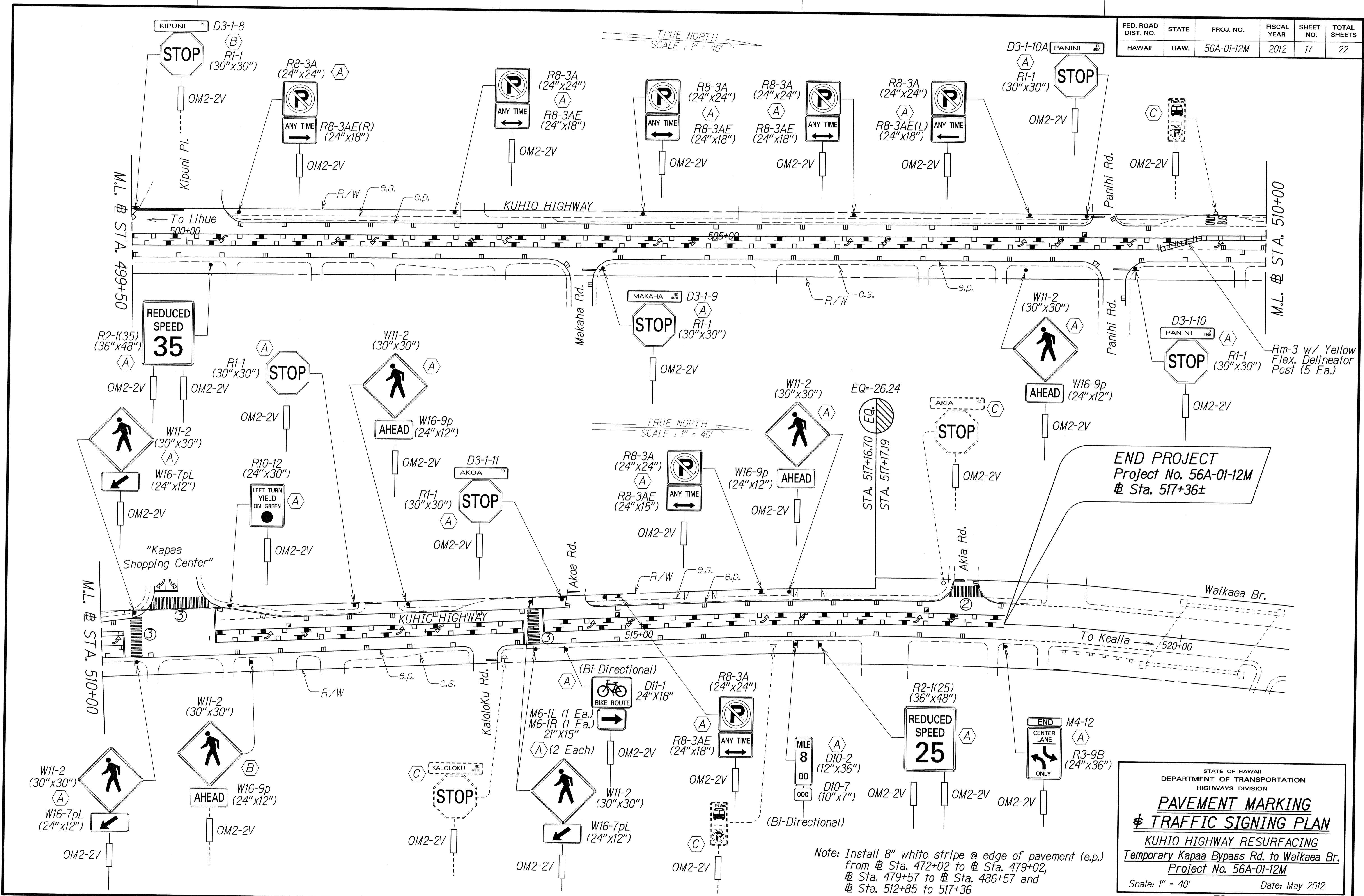
**PAVEMENT MARKING
& TRAFFIC SIGNING PLAN**

KUHIO HIGHWAY RESURFACING
Temporary Kapaa Bypass Rd. to Waikaea Br.
Project No. 56A-01-12M

Scale: 1" = 40' Date: May 2012

SHEET No. T3 OF 6 SHEETS

FED. ROAD DIST. NO.	STATE	PROJ. NO.	FISCAL YEAR	SHEET NO.	TOTAL SHEETS
HAWAII	HAW.	56A-01-12M	2012	17	22



SURVEY PLOTTED BY	DATE
DRAWN BY	
DESIGNED BY	
QUANTITIES BY	
CHECKED BY	
ORIGINAL PLAN	
NOTE BOOK	
NO. _____	

STATE OF HAWAII
DEPARTMENT OF TRANSPORTATION
HIGHWAYS DIVISION

**PAVEMENT MARKING
& TRAFFIC SIGNING PLAN**

KUHIO HIGHWAY RESURFACING
Temporary Kapaa Bypass Rd. to Waikaea Br.
Project No. 56A-01-12M

Scale: 1" = 40' Date: May 2012

SHEET No. 17 OF 6 SHEETS

Note: Install 8" white stripe @ edge of pavement (e.p.) from Sta. 472+02 to Sta. 479+02, Sta. 479+57 to Sta. 486+57 and Sta. 512+85 to 517+36