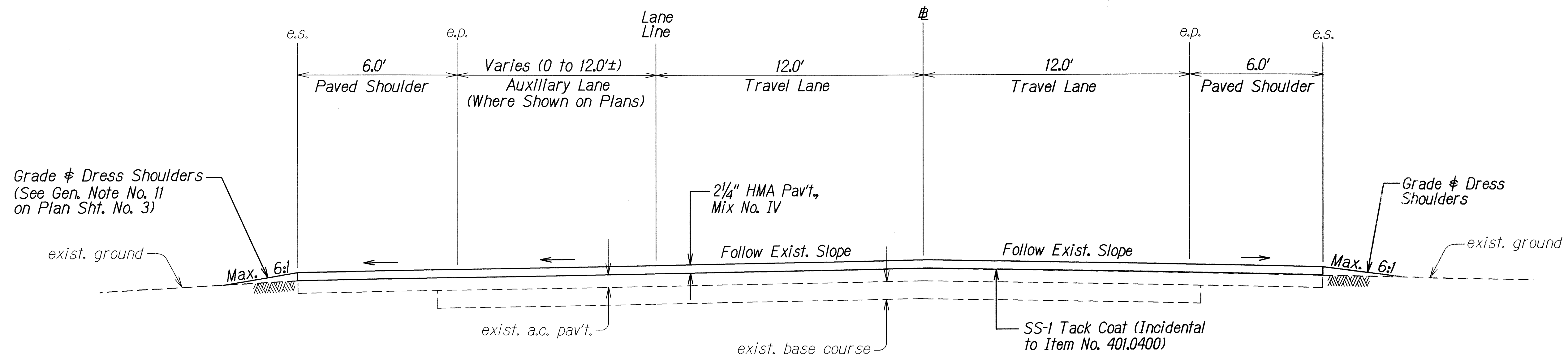
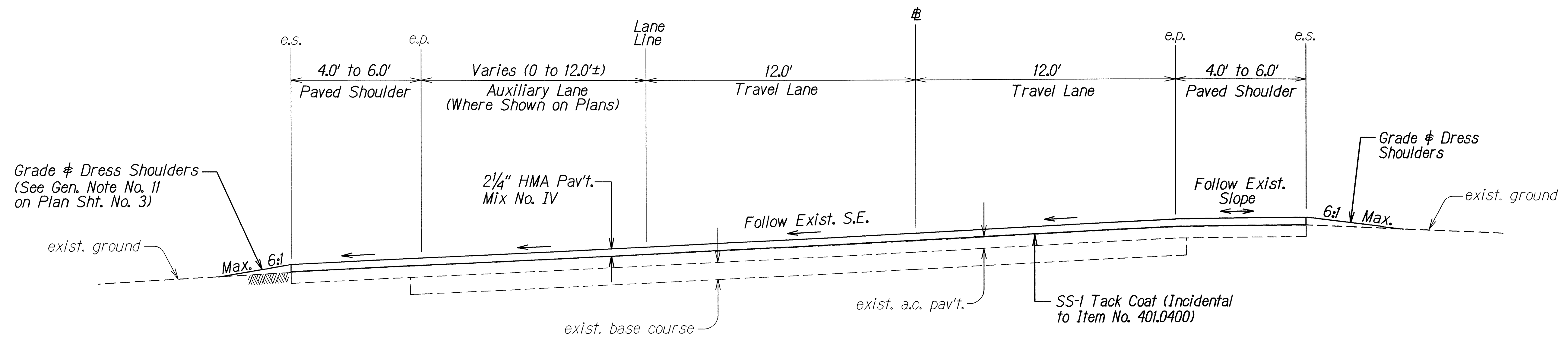


FED. ROAD DIST. NO.	STATE	FED. AID PROJ. NO.	FISCAL YEAR	SHEET NO.	TOTAL SHEETS
HAWAII	HAW.	ARR-056-1(52)	2009	6	21



TYPICAL TANGENT SECTION
Scale: $\frac{3}{8}" = 1'-0"$

NOTE: See Plan Sht. No. 8 for resurfacing at guardrail locations.



TYPICAL SECTION ON SUPERELEVATION
Scale: $\frac{3}{8}" = 1'-0"$

ORIGINAL PLAN	DATE	9/06
DRAWN BY		
DESIGNED BY		
CHECKED BY		
NOTED BY		
STAMPED BY		

STATE OF HAWAII
DEPARTMENT OF TRANSPORTATION
HIGHWAYS DIVISION

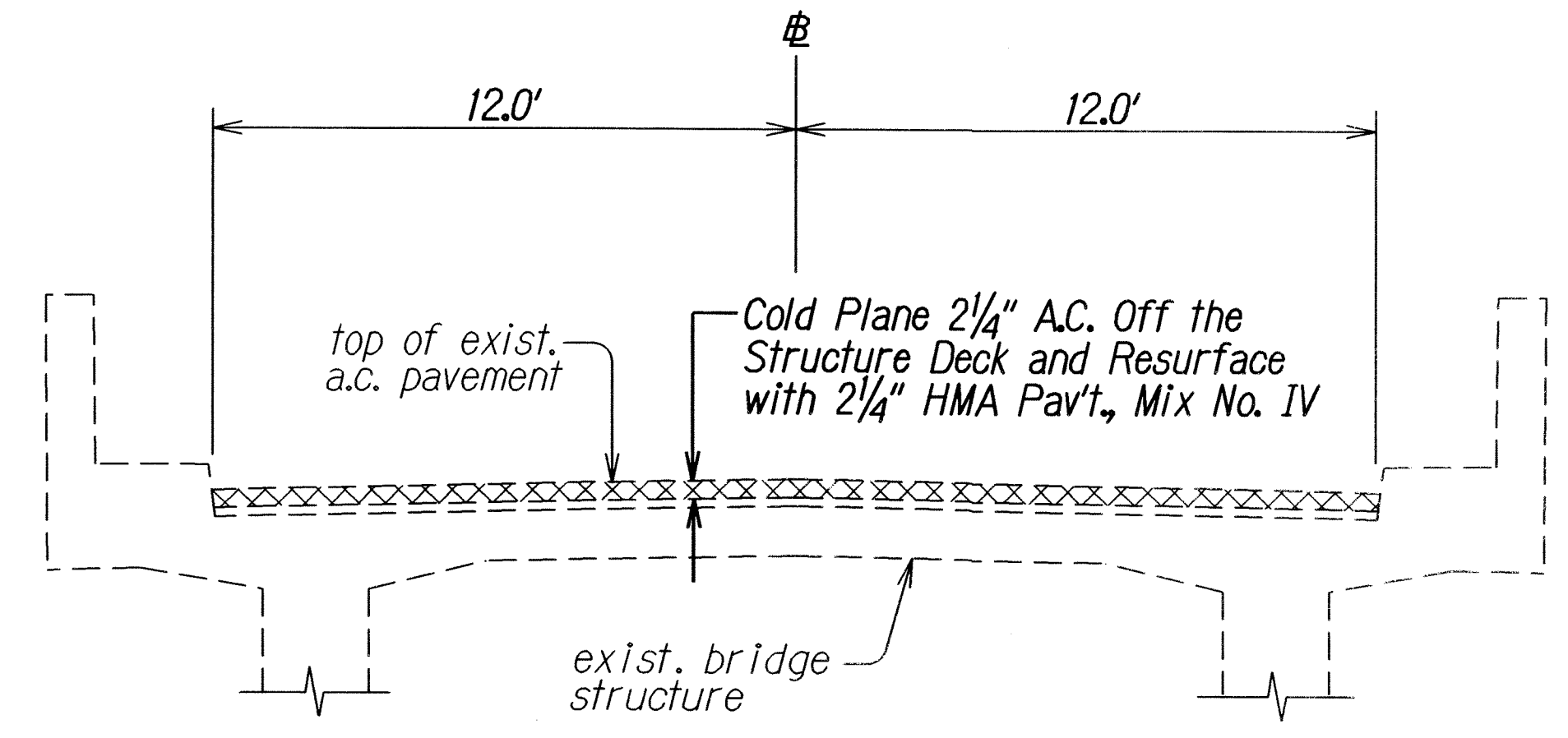
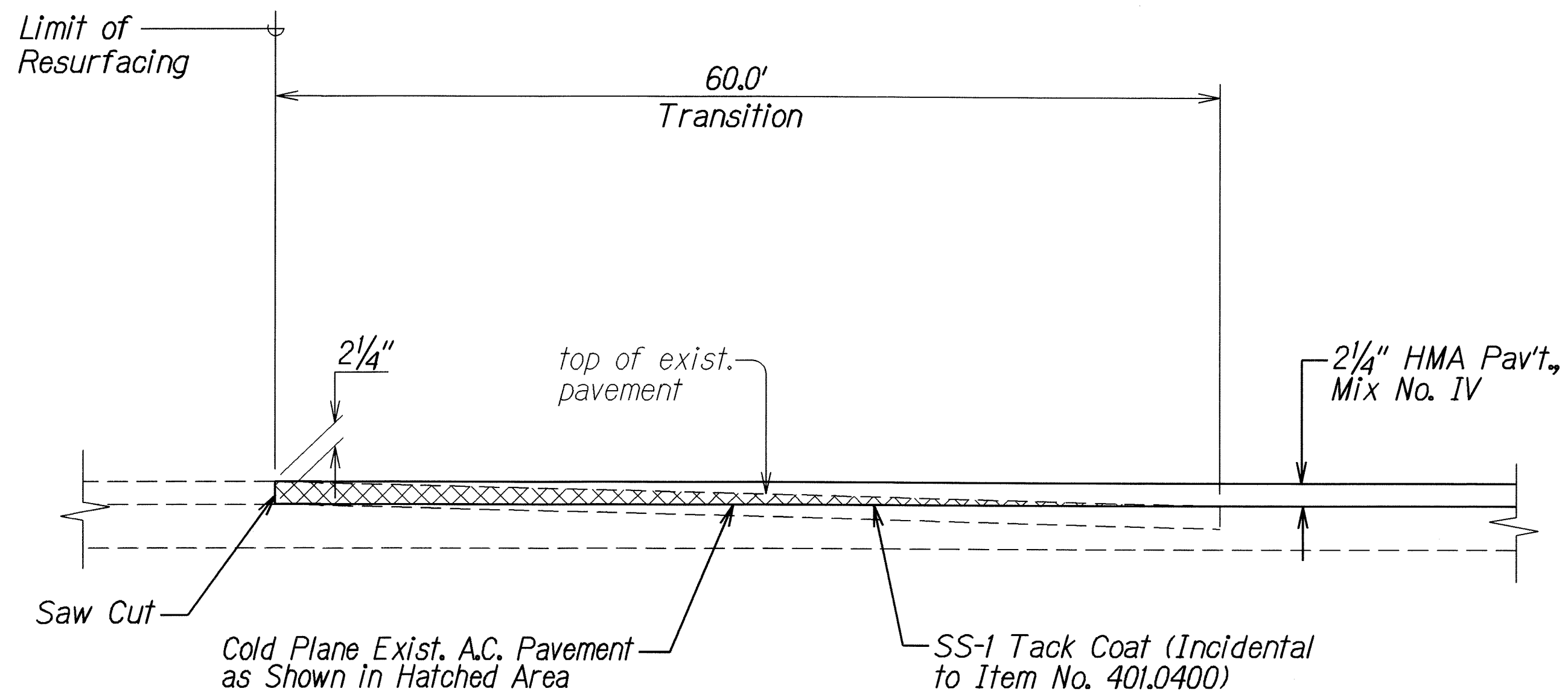
TYPICAL SECTIONS

KUHIO HIGHWAY RESURFACING
Kawaihau Road to Kapaa Bridge
Federal-Aid Project No. ARR-056-1(52)

Scale: $\frac{3}{8}" = 1'$ Date: March 2009

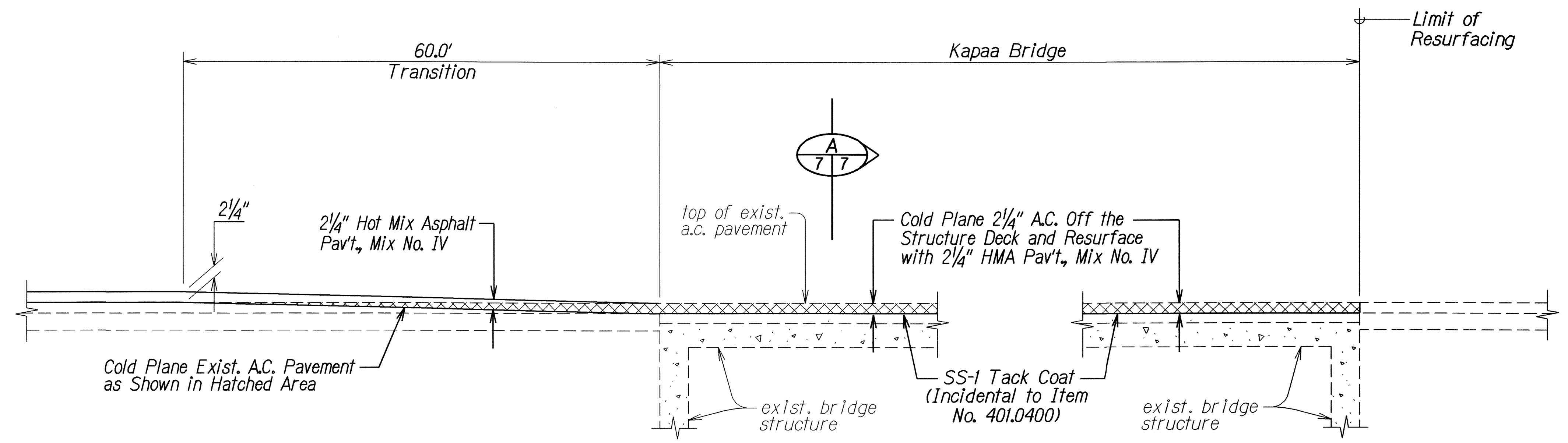
SHEET No. 1 OF 4 SHEETS

FED. ROAD DIST. NO.	STATE	FED. AID PROJ. NO.	FISCAL YEAR	SHEET NO.	TOTAL SHEETS
HAWAII	HAW.	ARR-056-1(52)	2009	7	21



SECTION A
Not to Scale

COLD PLANED TRANSITION TO EXISTING A.C. PAVEMENT
AT BEGINNING OF PROJECT AND EXCEPTION AREAS
Not to Scale



COLD PLANED TRANSITION TO EXISTING A.C. PAVEMENT
AT END OF PROJECT (KAPAA BRIDGE)
Not to Scale

ORIGINAL PLAN	SURVEY PLOTTED BY	DATE
TRACED BY		9/08
DESIGNED BY		
CHECKED BY		

STATE OF HAWAII
DEPARTMENT OF TRANSPORTATION
HIGHWAYS DIVISION

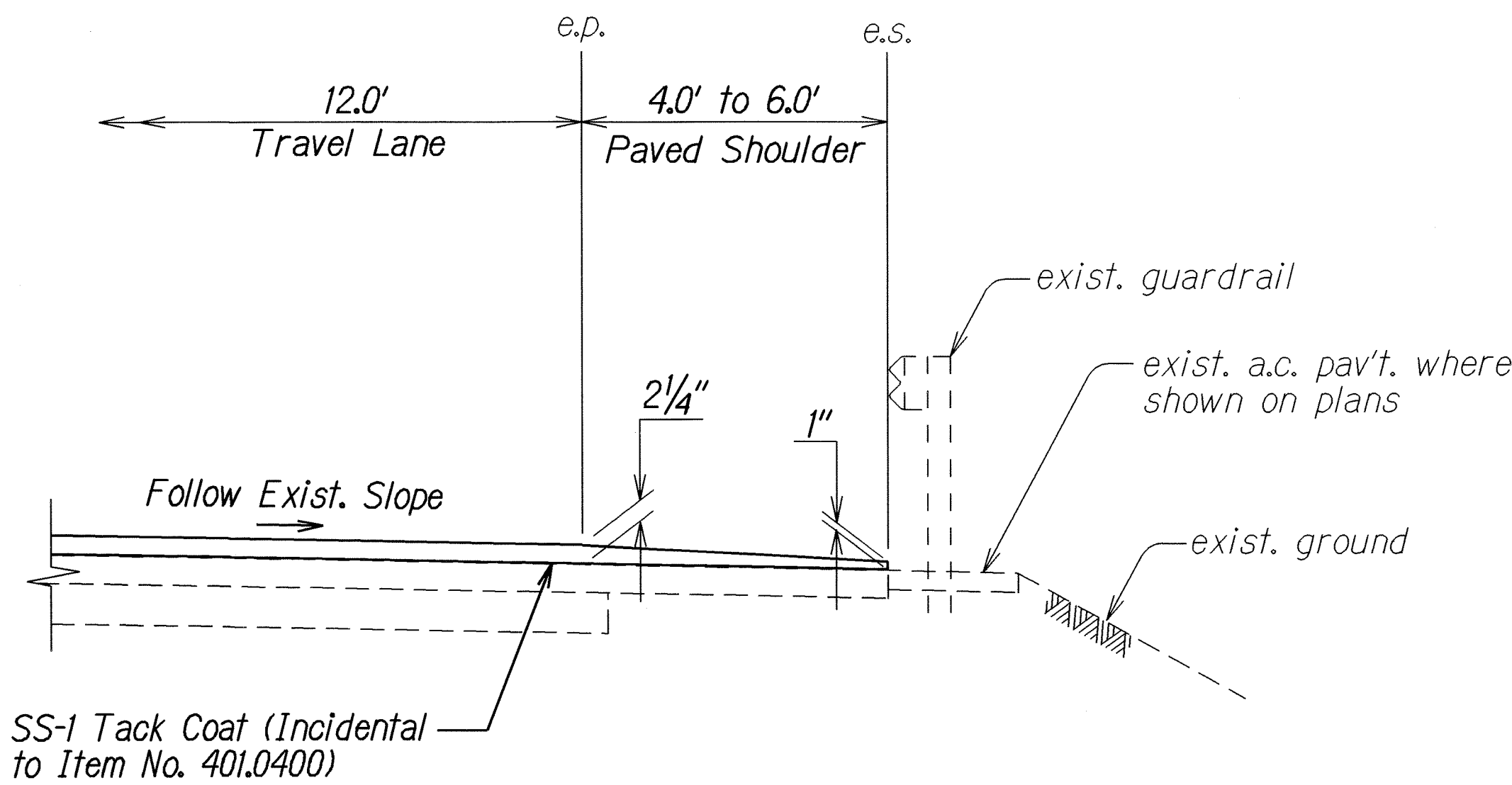
TYPICAL SECTIONS

KUHIO HIGHWAY RESURFACING
Kawihau Road to Kapaa Bridge
Federal-Aid Project No. ARR-056-1(52)

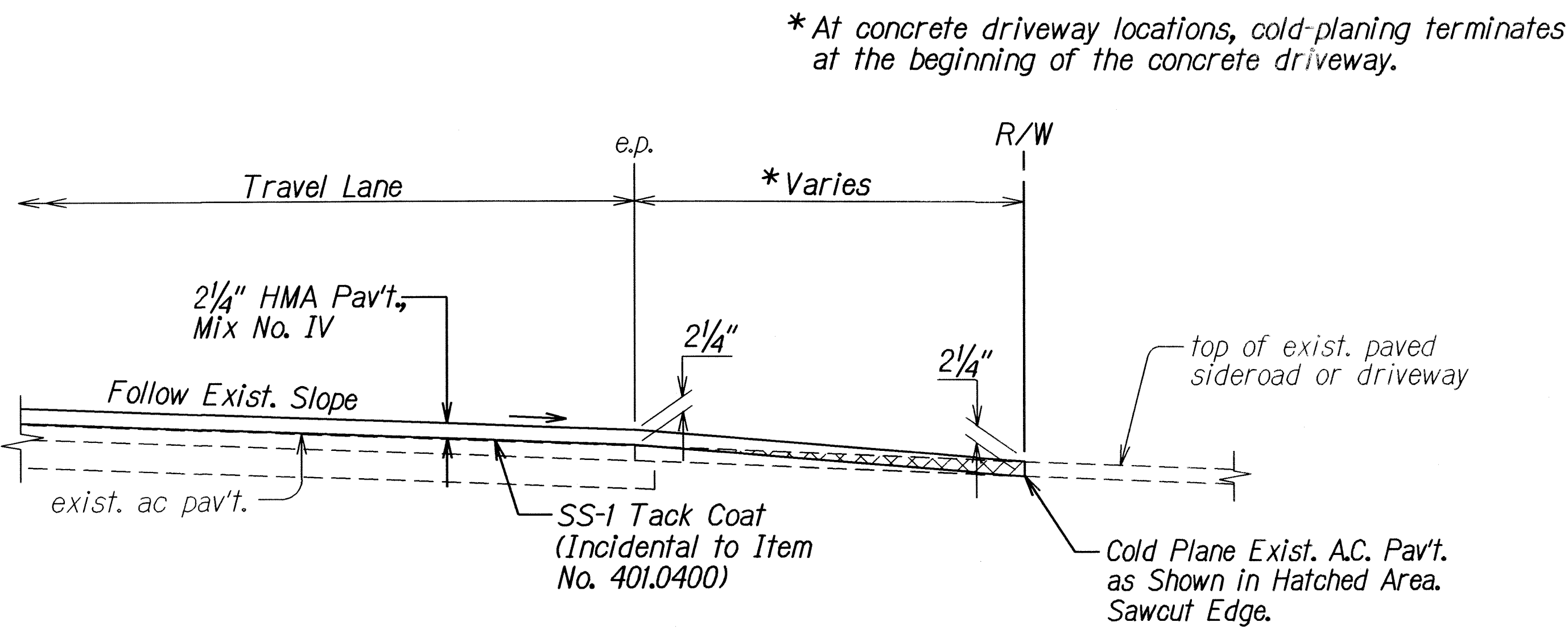
Scale: Not to Scale Date: March 2009

SHEET No. 2 OF 4 SHEETS

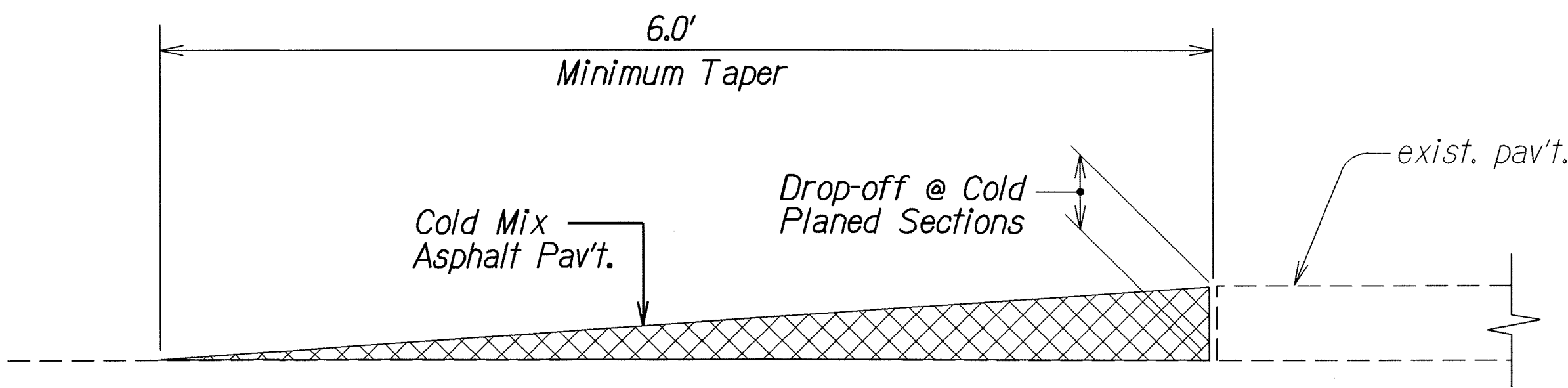
FED. ROAD DIST. NO.	STATE	FED. AID PROJ. NO.	FISCAL YEAR	SHEET NO.	TOTAL SHEETS
HAWAII	HAW.	ARR-056-1(52)	2009	8	21



RESURFACING AT GUARDRAIL LOCATIONS
Not to Scale

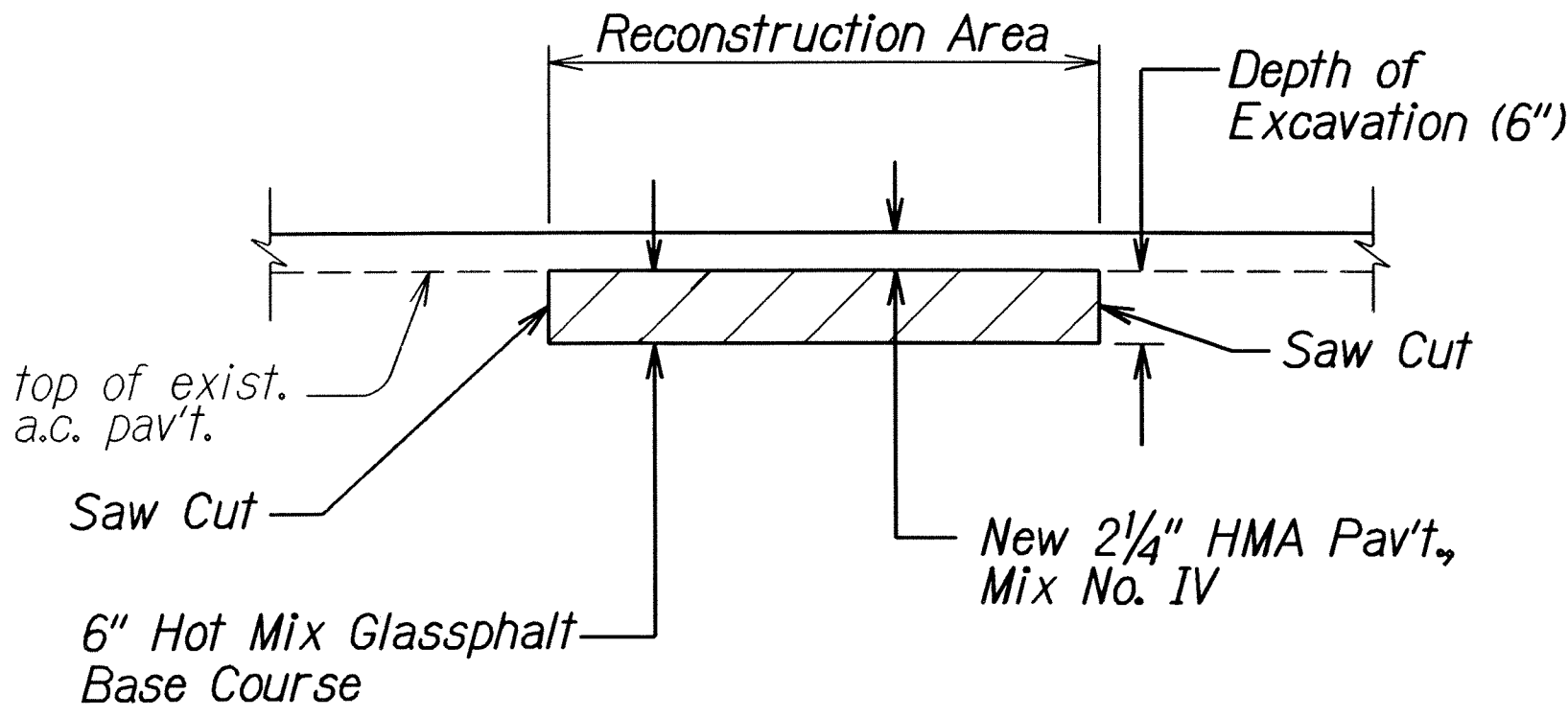


RESURFACING AT PAVED SIDEROADS & DRIVEWAYS
Not to Scale



TEMPORARY TRANSITION AT COLD PLANED AREAS
Not to Scale

Note: Contractor shall construct temporary pavement taper to prevent sharp pavement drop-offs at all cold planed sections. Prior to final Hot Mix Asphalt Pavement, Mix No. IV placement, temporary pavement taper shall be removed.



A.C. PAVEMENT RECONSTRUCTION DETAIL
Not to Scale

ORIGINAL PLAN	SURVEY PLOTTED BY	DATE
NOTE BOOK	DRAWN BY	9/08
QUANTITIES BY	TRACED BY	
CHECKED BY	QUANTITIES BY	
	CHECKED BY	

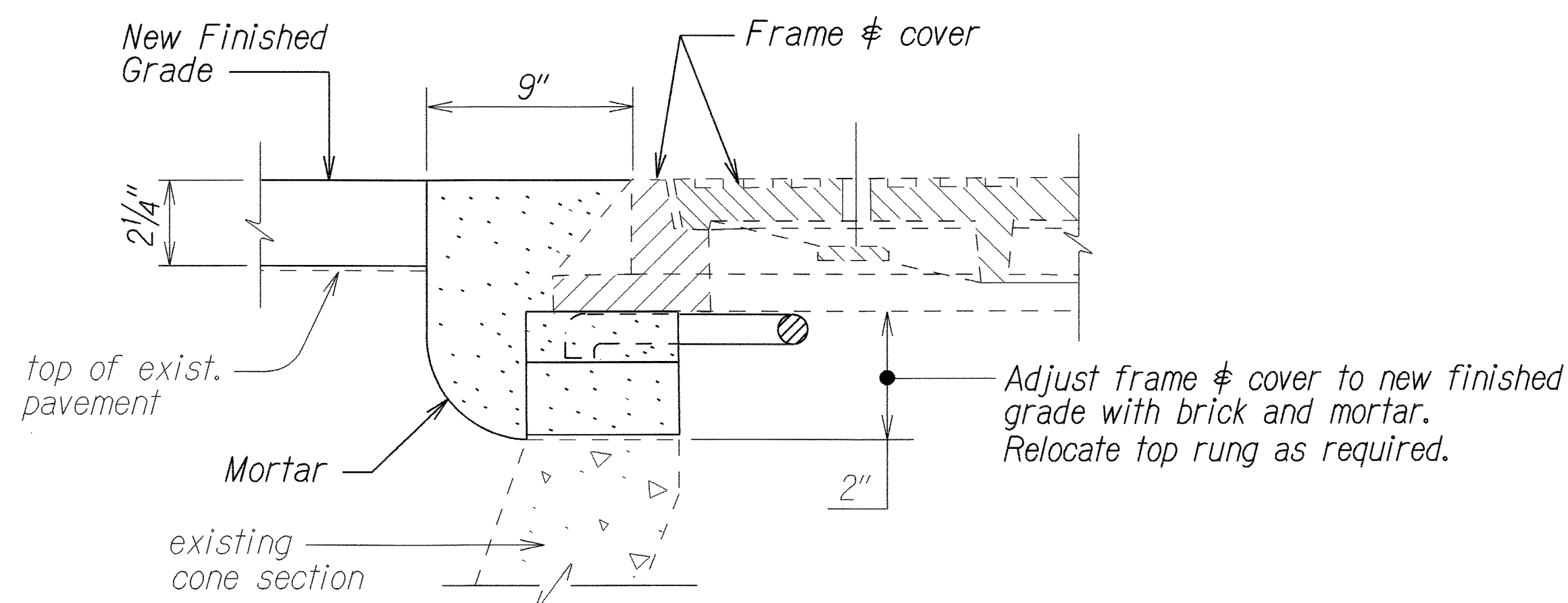
STATE OF HAWAII
DEPARTMENT OF TRANSPORTATION
HIGHWAYS DIVISION

TYPICAL SECTIONS
KUHIO HIGHWAY RESURFACING
Kawaihau Road to Kapaa Bridge
Federal-Aid Project No. ARR-056-1(52)

Scale: Not to Scale
Date: March 2009

SHEET No. 3 OF 4 SHEETS

FED. ROAD DIST. NO.	STATE	FED. AID PROJ. NO.	FISCAL YEAR	SHEET NO.	TOTAL SHEETS
HAWAII	HAW.	ARR-056-1(52)	2009	9	21

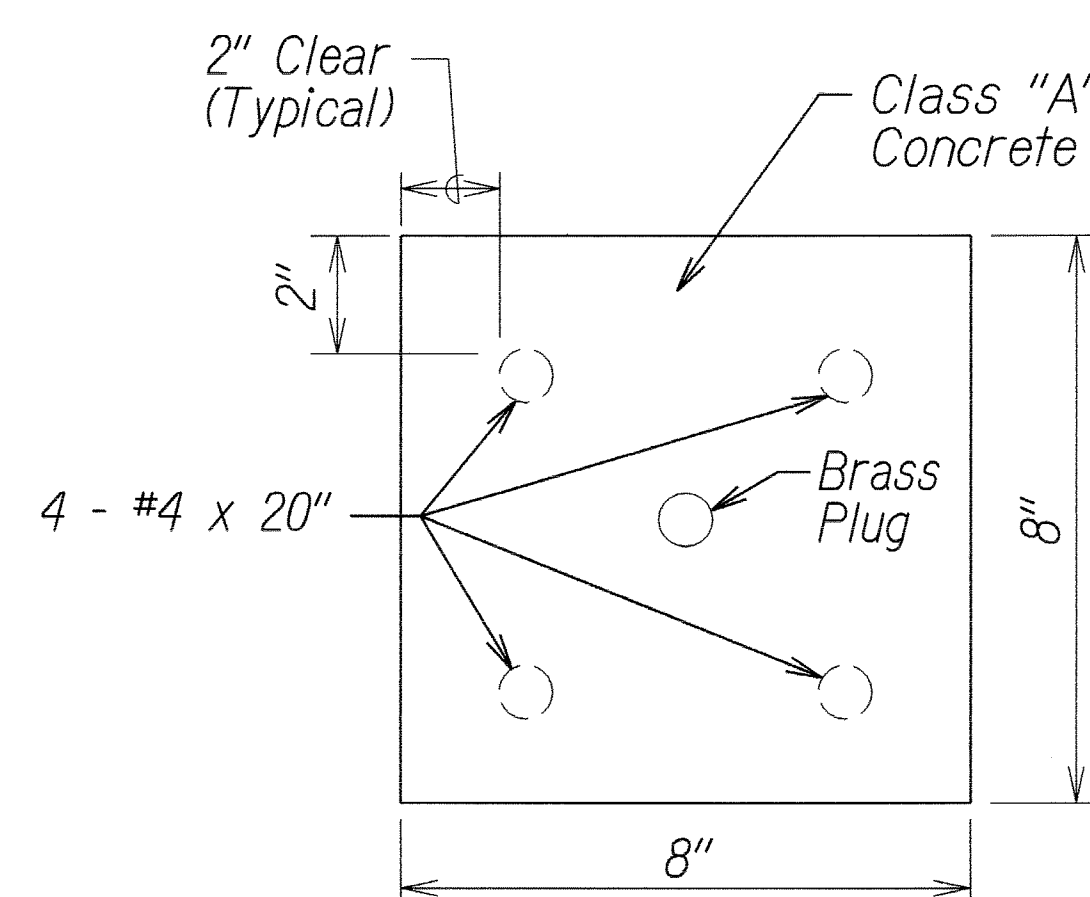
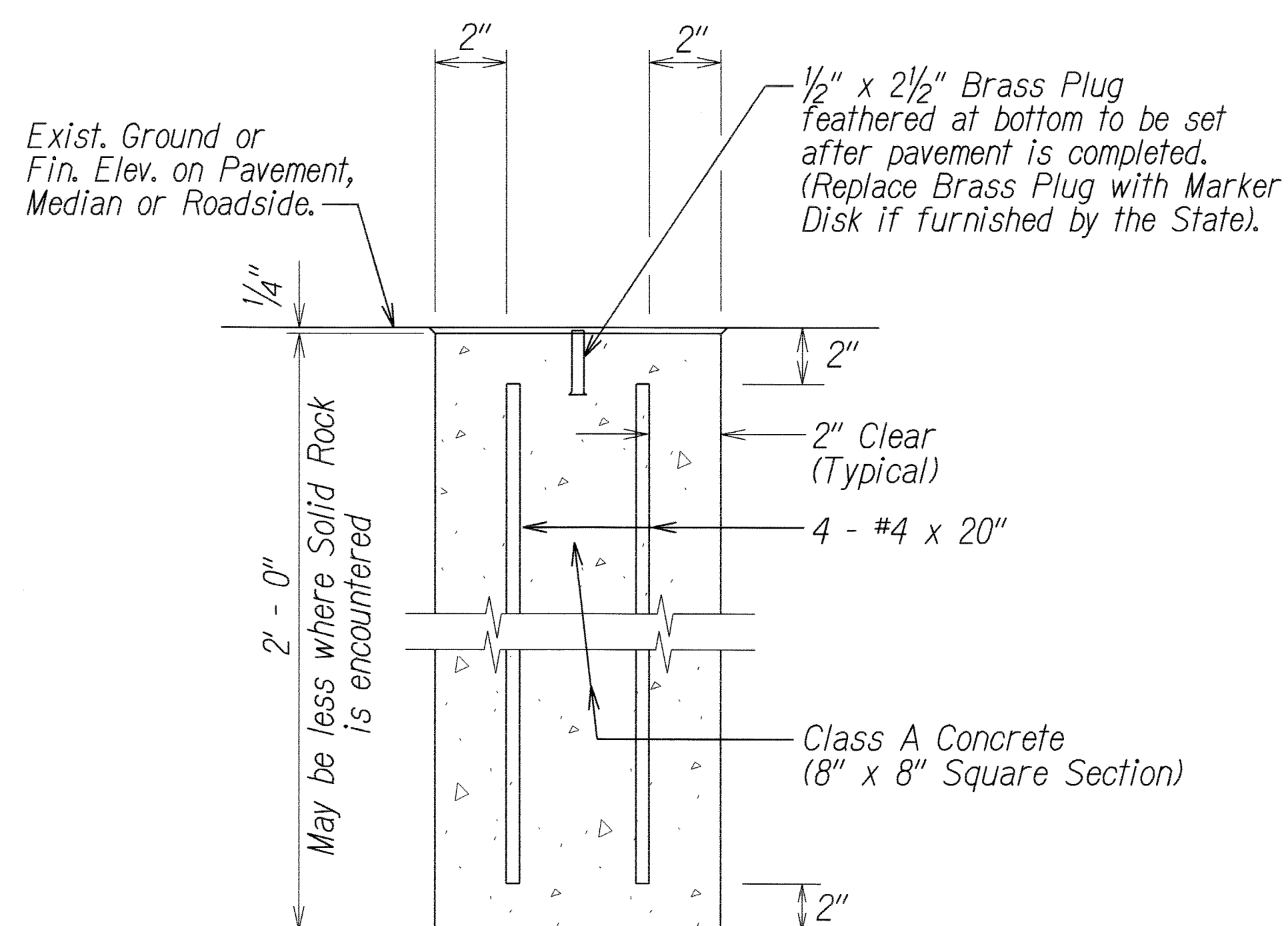


TYPICAL MANHOLE FRAME & COVER ADJUSTMENT
(SEWER, WATER, STORM DRAIN & UTILITY MANHOLES)
Not to Scale

NOTE: As an option, the Contractor may use an Adjust-to-Grade four-section extension ring with Safe-Tite seal, as manufactured by the National Utility Products Co. (NUPCO), or approved equal. Mortar shall be colored to match A.C. pavement. This work shall be incidental to the cost of adjusting the respective utilities.

NOTES FOR CONSTRUCTION WITHIN COUNTY RIGHT OF WAY:

- No material and/or equipment shall be stockpiled or otherwise stored within County Right of Way except at locations designated in writing and approved by the County Engineer.
- When required by the County of Kauai, and advertisement shall be placed in the newspaper by the Contractor for any County lane closures. The advertisement shall be made one (1) week before any lane closure and shall contain the following information:
 - Map of the traffic change limits;
 - Notice of starting and ending dates, times and duration;
 - Map to show lane closure; and
 - Explanation of lane closure, "NOTICE TO MOTORISTS"
- The Contractor shall be required to have any lane closures announced daily over the radio two (2) days before the starting date and until the work is completed. Both advertisements in the newspaper and radio shall be paid for by the Contractor. The Contractor shall also notify the Hospital, ambulatory services, Police Department and Fire Department of the lane closures.



PLAN VIEW

DETAIL FOR CENTERLINE & REFERENCE
SURVEY MONUMENT
Not to Scale

APPROVED:

Edward P. Fehmy 3/6/09
Chief, Wastewater Division Date
Department of Public Works

APPROVED: (For Work Within County Right-of-Way)

for *Marlene Kudo* 3.6.09
County Engineer Date

STATE OF HAWAII DEPARTMENT OF TRANSPORTATION HIGHWAYS DIVISION	
TYPICAL SECTIONS	
KUHIU HIGHWAY RESURFACING Kawaihau Road to Kapaa Bridge Federal-Aid Project No. ARR-056-1(52)	
Scale: Not to Scale	Date: March 2009
SHEET No. 4 OF 4 SHEETS	

ORIGINAL PLAN	DATE: 3/7/08
SURVEY PLOTTED BY	
DRAWN BY	
DESIGNED BY	
CHECKED BY	
NOTE BOOK	
DATE: 3/7/08	