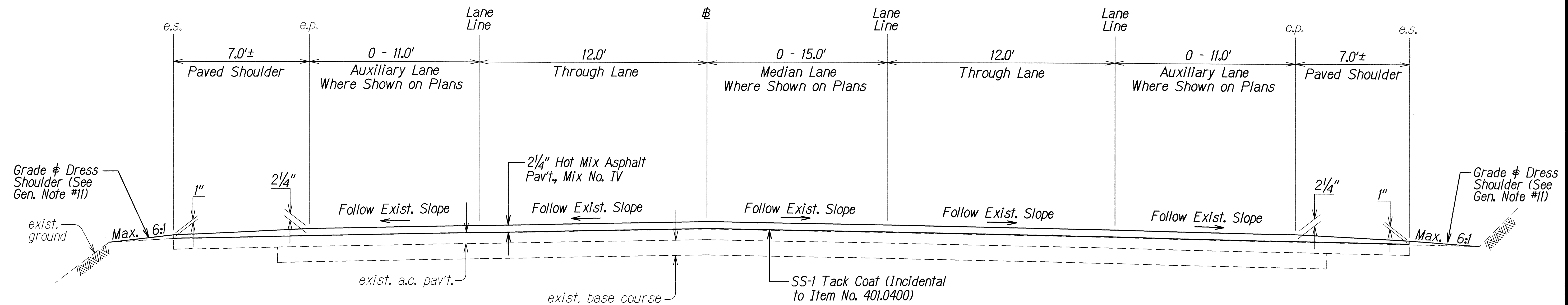
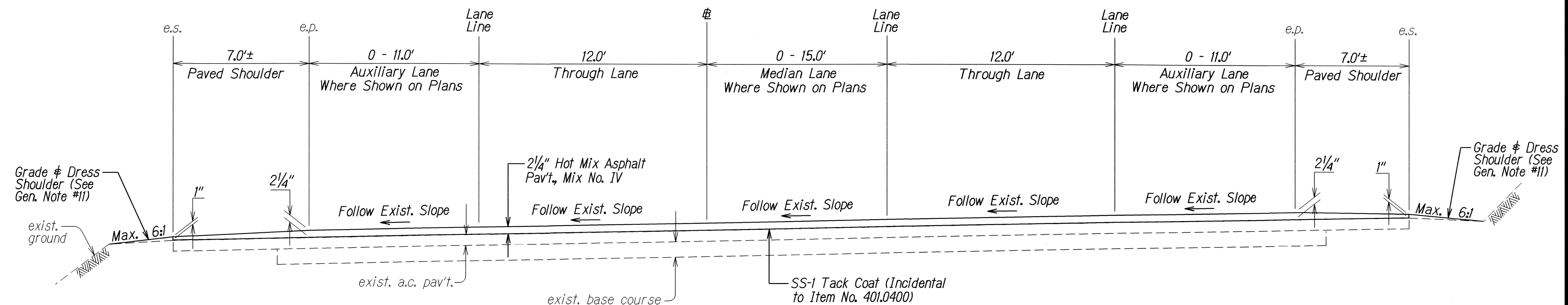


FED. ROAD DIST. NO.	STATE	PROJ. NO.	FISCAL YEAR	SHEET NO.	TOTAL SHEETS
HAWAII	HAW.	56D-03-08M	2008	6	20



**TYPICAL TANGENT SECTION**  
Scale:  $\frac{3}{8}" = 1'-0"$



**TYPICAL SUPERELEVATION SECTION**  
Scale:  $\frac{3}{8}" = 1'-0"$

ORIGINAL PLAN	SURVEY PLOTTED BY	DATE
NOTE BOOK	DRAWN BY	12/07
DESIGNED BY	CHECKED BY	
QUANTITIES BY		
CHECKED BY		

STATE OF HAWAII  
DEPARTMENT OF TRANSPORTATION  
HIGHWAYS DIVISION

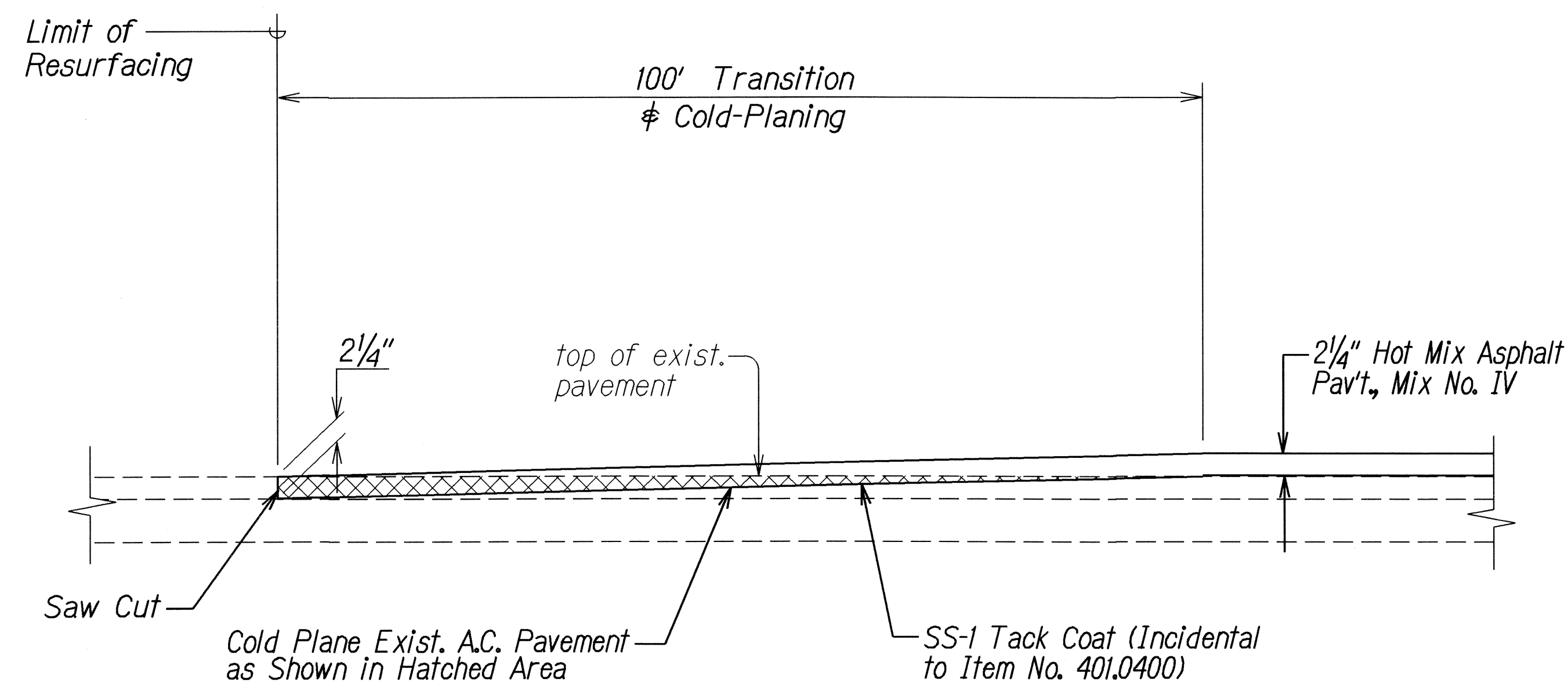
**TYPICAL SECTIONS**

**KUHIO HIGHWAY RESURFACING**  
**Anini Vista Drive to Mile Post 27.0**  
**Project No. 56D-03-08M**

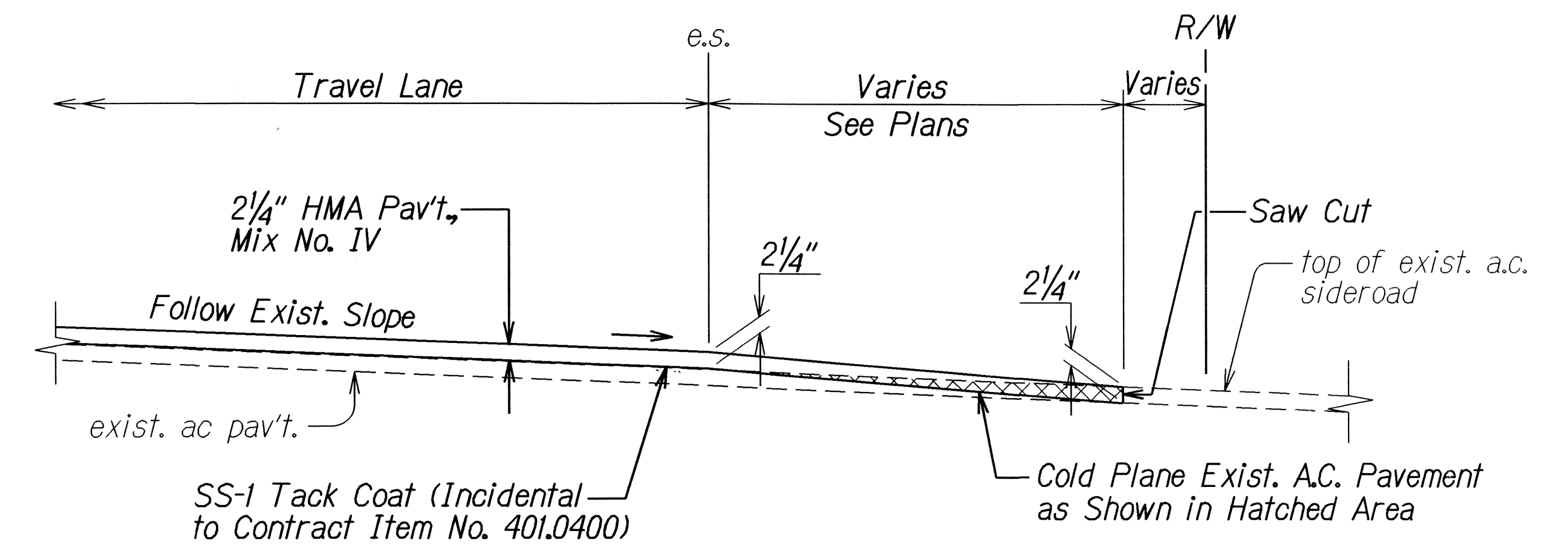
Scale: As Shown Date: March 2008

SHEET No. 1 OF 3 SHEETS

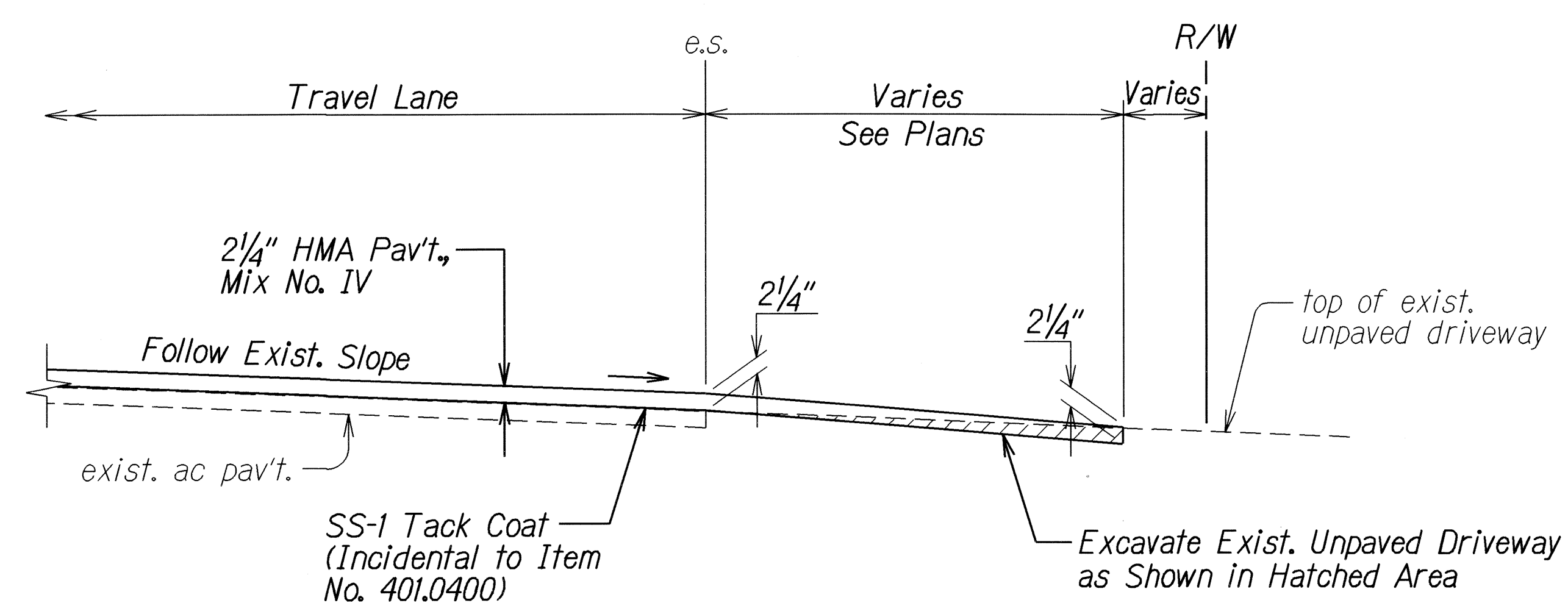
FED. ROAD DIST. NO.	STATE	PROJ. NO.	FISCAL YEAR	SHEET NO.	TOTAL SHEETS
HAWAII	HAW.	56D-03-08M	2008	7	20



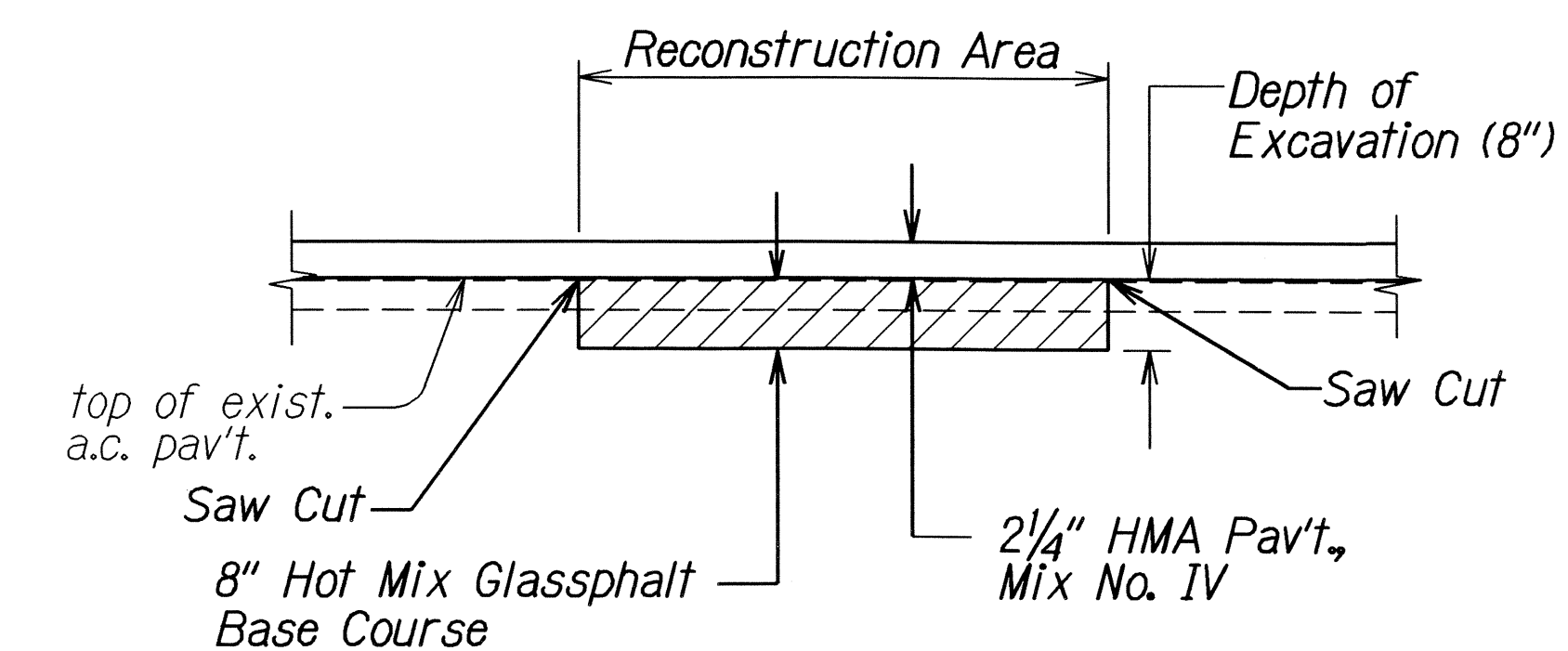
COLD PLANED TRANSITION TO EXISTING A.C. PAVEMENT  
Not to Scale



RESURFACING AT PAVED SIDEROADS AND DRIVEWAYS  
Not to Scale



RESURFACING AT UNPAVED DRIVEWAYS  
Not to Scale



A.C. PAVEMENT RECONSTRUCTION DETAIL  
Not to Scale

DATE	7/07
SURVEY PLOTTED BY	
DRAWN BY	
CHECKED BY	
NOTED BY	
QUANTITIES BY	
CHECKED BY	
ORIGINAL PLAN	
NOTE BOOK	
PLAN	
SECTION	
DETAIL	
SECTION	
DETAIL	
SECTION	
DETAIL	

STATE OF HAWAII  
DEPARTMENT OF TRANSPORTATION  
HIGHWAYS DIVISION

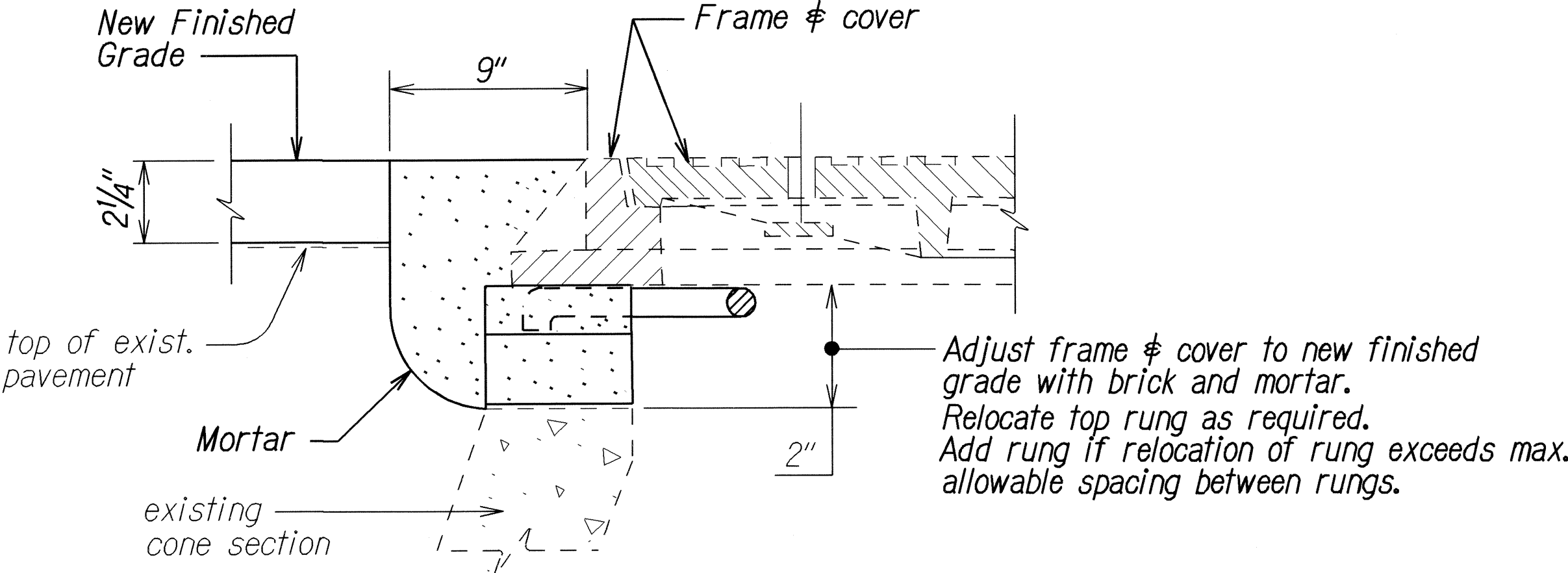
**TYPICAL SECTIONS**

KUHIO HIGHWAY RESURFACING  
Anini Vista Drive to Mile Post 27.0  
Project No. 56D-03-08M

Scale: As Shown Date: March 2008

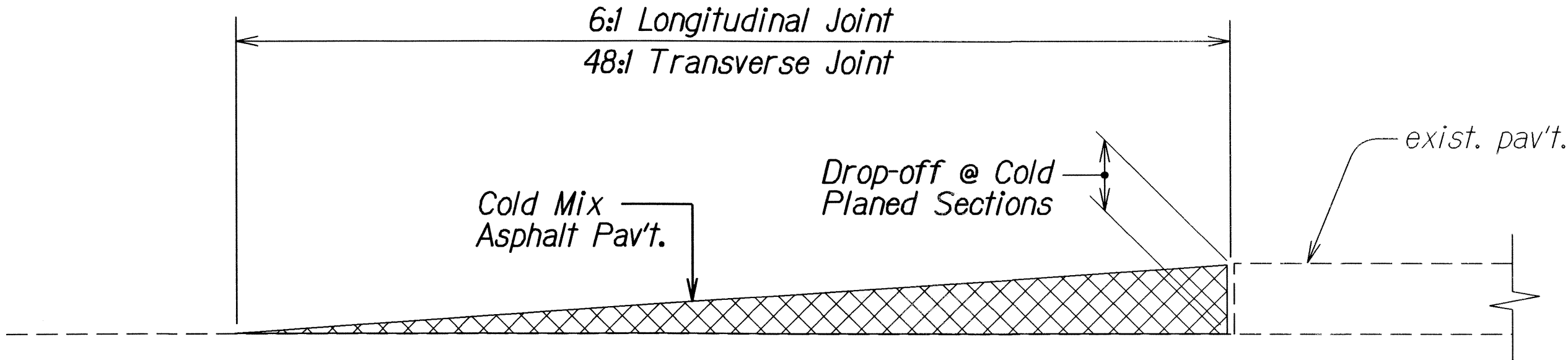
SHEET No. 2 OF 3 SHEETS

FED. ROAD DIST. NO.	STATE	PROJ. NO.	FISCAL YEAR	SHEET NO.	TOTAL SHEETS
HAWAII	HAW.	56D-03-08M	2008	8	20



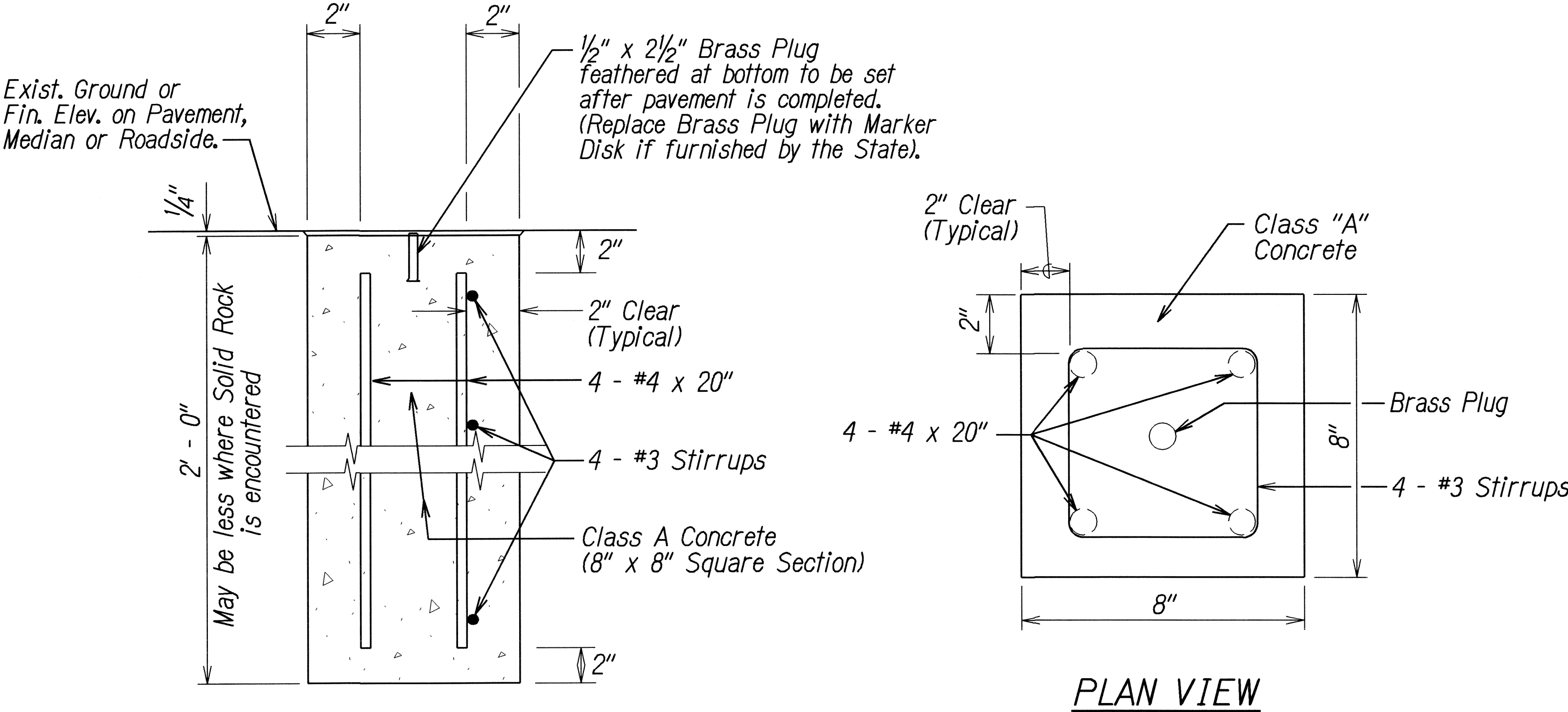
**TYPICAL MANHOLE FRAME & COVER ADJUSTMENT**  
(WATER, SEWER, STORM DRAIN & UTILITY MANHOLES)  
Not to Scale

NOTE: As an option, the Contractor may use an Adjus-to-Grade four-section extension ring with Safe-Tite seal, as manufactured by the National Utility Products Co. (NUPCO), or approved equal.



**TEMPORARY TRANSITION AT COLD PLANED AREAS**  
Not to Scale

Note: Contractor shall construct temporary pavement taper to prevent sharp pavement drop-offs at all cold planed sections. Prior to final Hot Mix Asphalt Pavement, Mix No. IV placement, temporary pavement taper shall be removed. Install signs to indicate change in roadway elevation (grade) at no cost to the State.



**DETAIL FOR CENTERLINE & REFERENCE SURVEY MONUMENT**  
Not to Scale

ORIGINAL PLAN	SURVEY PLOTTED BY	DATE
TRACED BY		12/07
NOTED BY		
QUANTITIES BY		
CHECKED BY		

STATE OF HAWAII  
DEPARTMENT OF TRANSPORTATION  
HIGHWAYS DIVISION

**TYPICAL SECTIONS**  
  
**KUHIO HIGHWAY RESURFACING**  
**Anini Vista Drive to Mile Post 27.0**  
**Project No. 56D-03-08M**

Scale: As Shown  
SHEET No. 3 OF 3 SHEETS

Date: March 2008