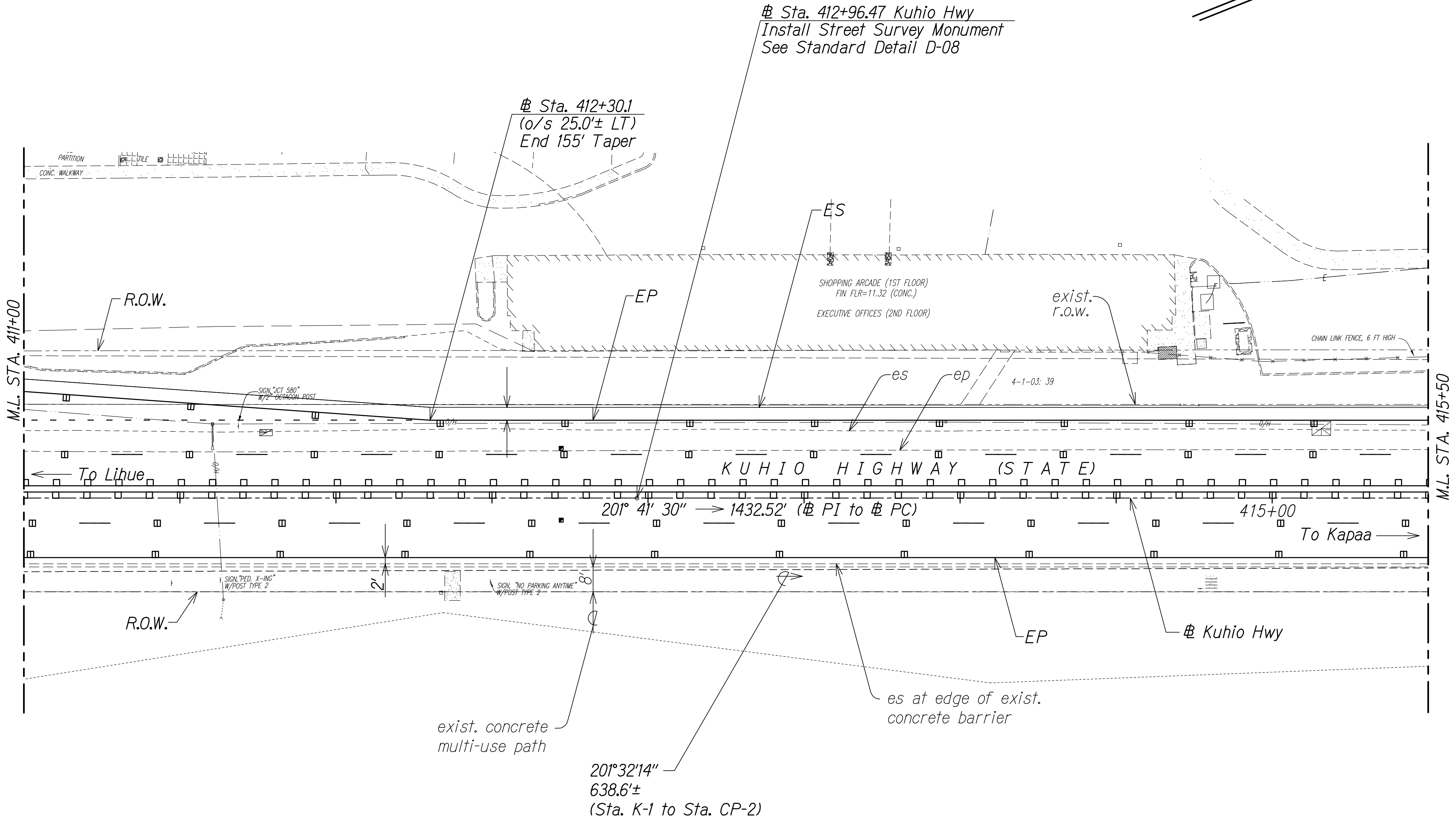




FED. ROAD DIST. NO.	STATE	FED. AID PROJ. NO.	FISCAL YEAR	SHEET NO.	TOTAL SHEETS
KAUAI	HAW.	NH-056-1(50)	2019	ADD.27	244

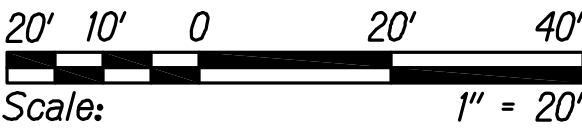
True North  
Scale: 1"=20'



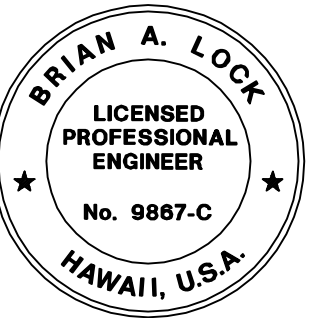
Notes:

- See "Traffic Signal Plans" for Adjustments/Relocation of Traffic Signal System
- See "Roadway Paving Plans" for Additional Roadway Geometrics

GRAPHIC SCALE



SURVEY PLOTTED BY	DATE
DRAWN BY	
TRACED BY	
DESIGNED BY	
CHECKED BY	
ORIGINAL PLAN	
NOTE BOOK	
No.	



THIS WORK WAS PREPARED BY ME  
OR UNDER MY SUPERVISION.  
*[Signature]*  
WILSON OKAMOTO CORPORATION LIC. EXP. DATE

11/12/19	△ Reissuing plan for legibility only. No design changes have been made.
9/20/19	△ Reissuing plan for legibility only. No design changes have been made.
DATE	REVISION

STATE OF HAWAII  
DEPARTMENT OF TRANSPORTATION  
HIGHWAYS DIVISION

ROADWAY PLAN

KUHIO HIGHWAY SHORT-TERM IMPROVEMENTS KUAMOO ROAD TO TEMPORARY KAPAA BYPASS ROAD  
Fed. Aid Proj. No. NH-056-1(50)  
Scale: 1" = 20' Date: July 2019

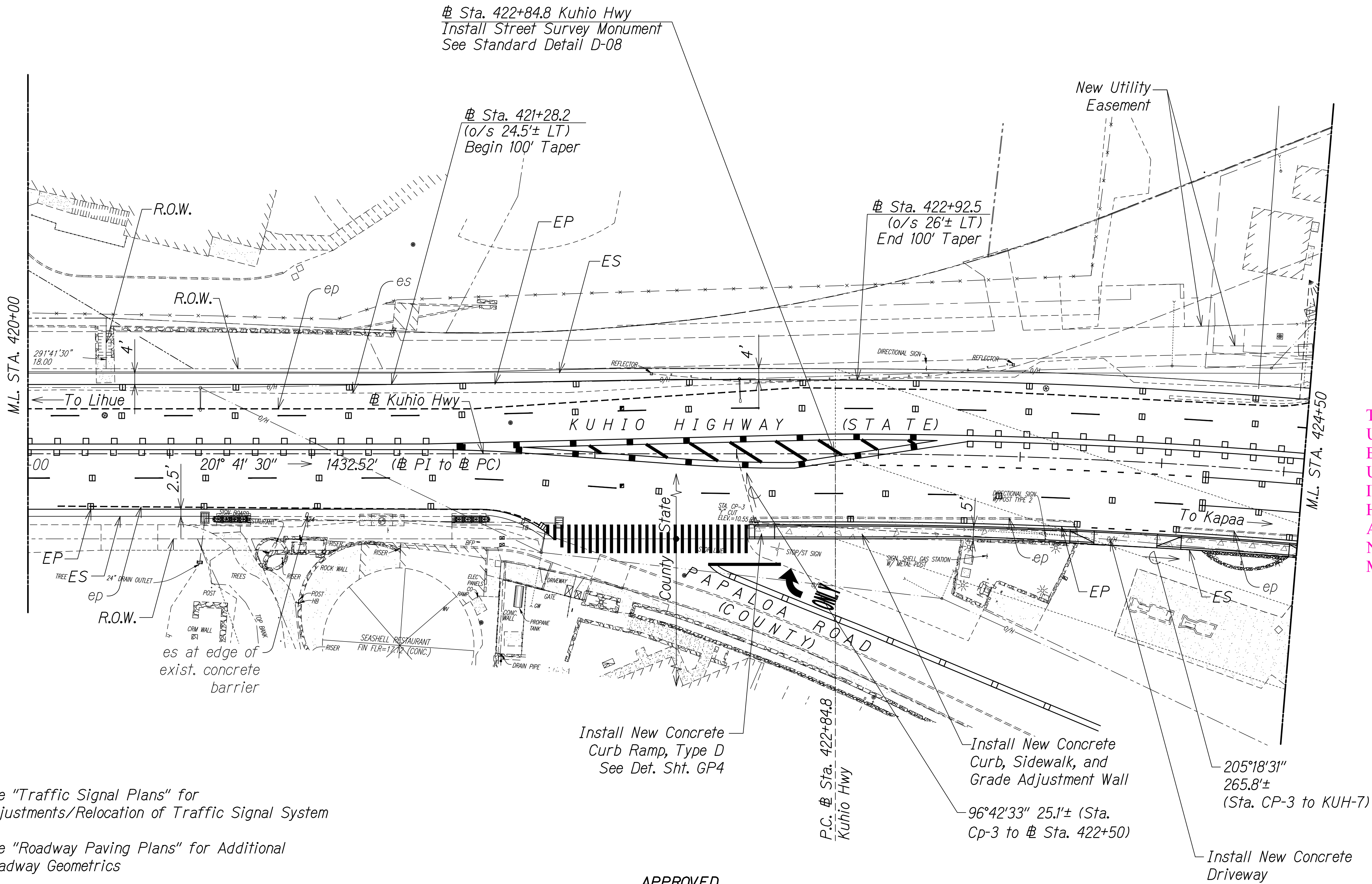
SHEET No. *RP2* OF 16 SHEETS





FED. ROAD DIST. NO.	STATE	FED. AID PROJ. NO.	FISCAL YEAR	SHEET NO.	TOTAL SHEETS
KAUAI	HAW.	NH-056-1(50)	2019	CO.ADD.29	244

True North  
Scale: 1"=20'



# Kuhio Highway  
Curve Data  
 $\Delta = 36^\circ 59' 00''$   
 $\Delta/2 = 18^\circ 29' 30''$   
 $R = 2000.00$   
 $T = 668.87$   
 $Ch = 1268.67$   
 $Lc = 1290.96$

THESE PLANS HAVE BEEN PREPARED UTILIZING INFORMATION PROVIDED BY THE PROJECT CONTRACTOR. THE UPDATED CONSTRUCTION INFORMATION DEPICTED HEREIN HAS NOT BEEN VERIFIED FOR ACCURACY AND COMPLETENESS. NO REPRESENTATION IS BEING MADE TO ITS VALIDITY.

Notes:

- See "Traffic Signal Plans" for Adjustments/Relocation of Traffic Signal System
- See "Roadway Paving Plans" for Additional Roadway Geometrics
- See "Detectable Warning Details" on Sheet T5

GRAPHIC SCALE:



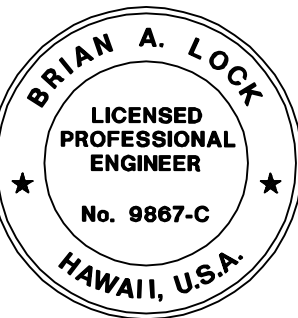
APPROVED

County Engineer  
County of Kauai  
(For Work Within the County Right-of-Way)

Date

11/12/19	△ Reissuing plan for legibility only. No design changes have been made.
9/20/19	△ Reissuing plan for legibility only. No design changes have been made.

DATE REVISION



THIS WORK WAS PREPARED BY ME OR UNDER MY SUPERVISION.  
APRIL 30, 2020  
WILSON OKAMOTO CORPORATION LIC. EXP. DATE

STATE OF HAWAII  
DEPARTMENT OF TRANSPORTATION  
HIGHWAYS DIVISION

ROADWAY PLAN

KUHIO HIGHWAY SHORT-TERM  
IMPROVEMENTS KUAMOO ROAD  
TO TEMPORARY KAPAA BYPASS ROAD

Fed. Aid Proj. No. NH-056-1(50)

Scale: 1" = 20' Date: July 2019

SHEET No. RP4 OF 16 SHEETS

"AS-BUILT"

CO.ADD.29







FED. ROAD DIST. NO.	STATE	FED. AID PROJ. NO.	FISCAL YEAR	SHEET NO.	TOTAL SHEETS
KAUAI	HAW.	NH-056-1(50)	2019	CO.ADD.31	244

THESE PLANS HAVE BEEN PREPARED UTILIZING INFORMATION PROVIDED BY THE PROJECT CONTRACTOR. THE UPDATED CONSTRUCTION INFORMATION DEPICTED HEREIN HAS NOT BEEN VERIFIED FOR ACCURACY AND COMPLETENESS. NO REPRESENTATION IS BEING MADE TO ITS VALIDITY.

# Kuhio Highway  
Curve Data  
 $\Delta = 36^{\circ}59'00''$   
 $\Delta/2 = 18^{\circ}29'30''$   
 $R = 2000.00$   
 $T = 668.87$   
 $Ch = 1268.67$   
 $Lc = 1290.96$

LEGEND FOR AS-BUILT POSTINGS

- Squiggly line for as-built deletion
- Double line for as-built deletion
- Roadway Text for as-built posting



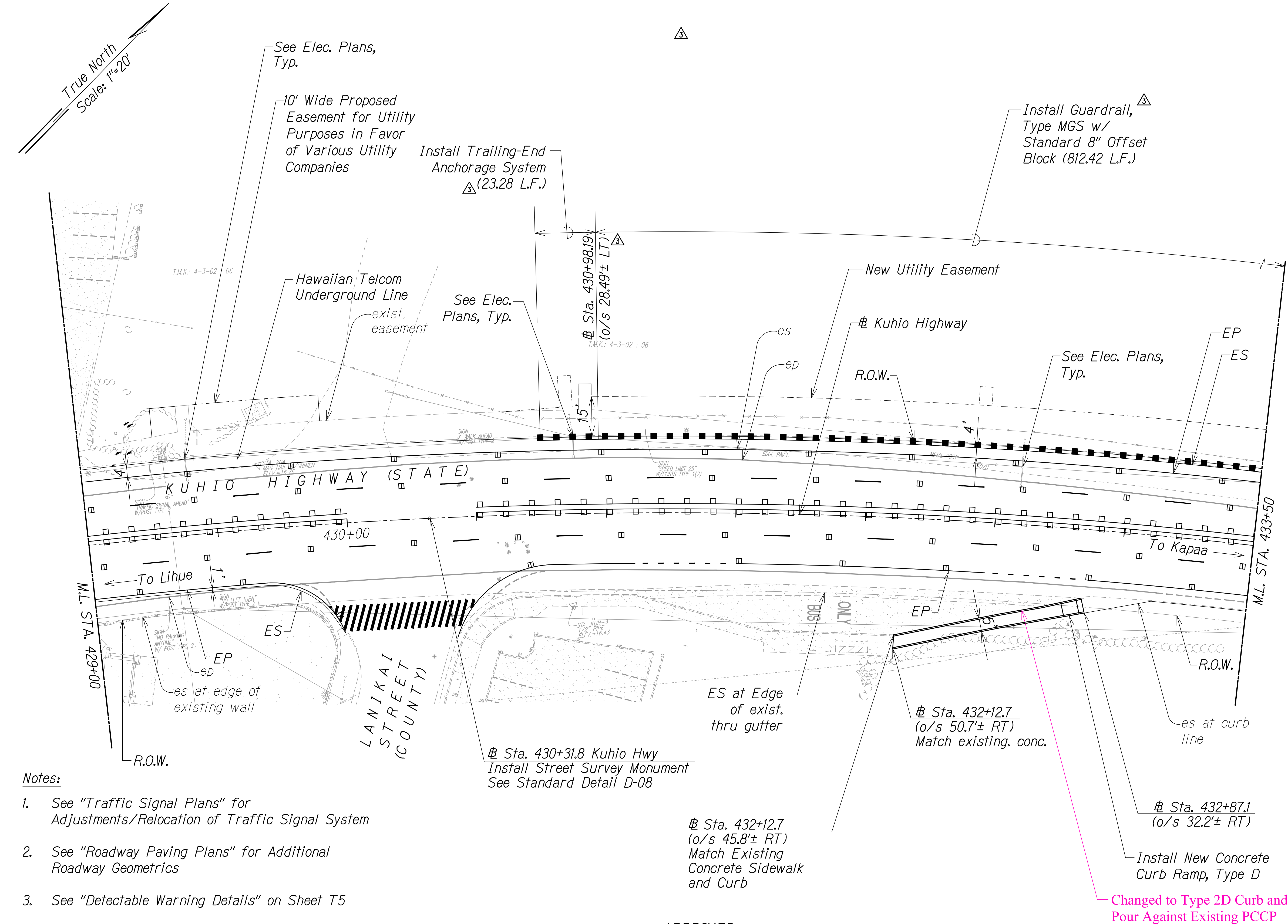
THIS WORK WAS PREPARED BY ME OR UNDER MY SUPERVISION.  
*[Signature]*  
WILSON OKAMOTO CORPORATION APRIL 30, 2020 LIC. EXP. DATE

STATE OF HAWAII  
DEPARTMENT OF TRANSPORTATION  
HIGHWAYS DIVISION

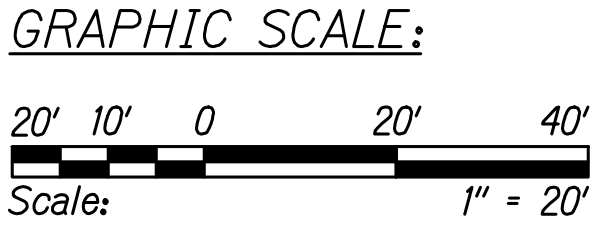
ROADWAY PLAN

KUHIO HIGHWAY SHORT-TERM  
IMPROVEMENTS KUAMOO ROAD  
TO TEMPORARY KAPAA BYPASS ROAD  
Fed. Aid Proj. No. NH-056-1(50)  
Scale: 1" = 20' Date: July 2019

SHEET No. RP6 OF 16 SHEETS



- Notes:
- See "Traffic Signal Plans" for Adjustments/Relocation of Traffic Signal System
  - See "Roadway Paving Plans" for Additional Roadway Geometrics
  - See "Detectable Warning Details" on Sheet T5
  - Contractor shall submit shop drawings of MSKT-SP-MGS TL-2 End Treatment



APPROVED

County Engineer  
County of Kaua'i  
(For Work Within the County Right-of-Way)

Date

11/12/19	△ Reissuing plan for legibility; revised guardrail lengths
9/20/19	△ Reissuing plan for legibility only. No design changes have been made.

DATE	REVISION
------	----------

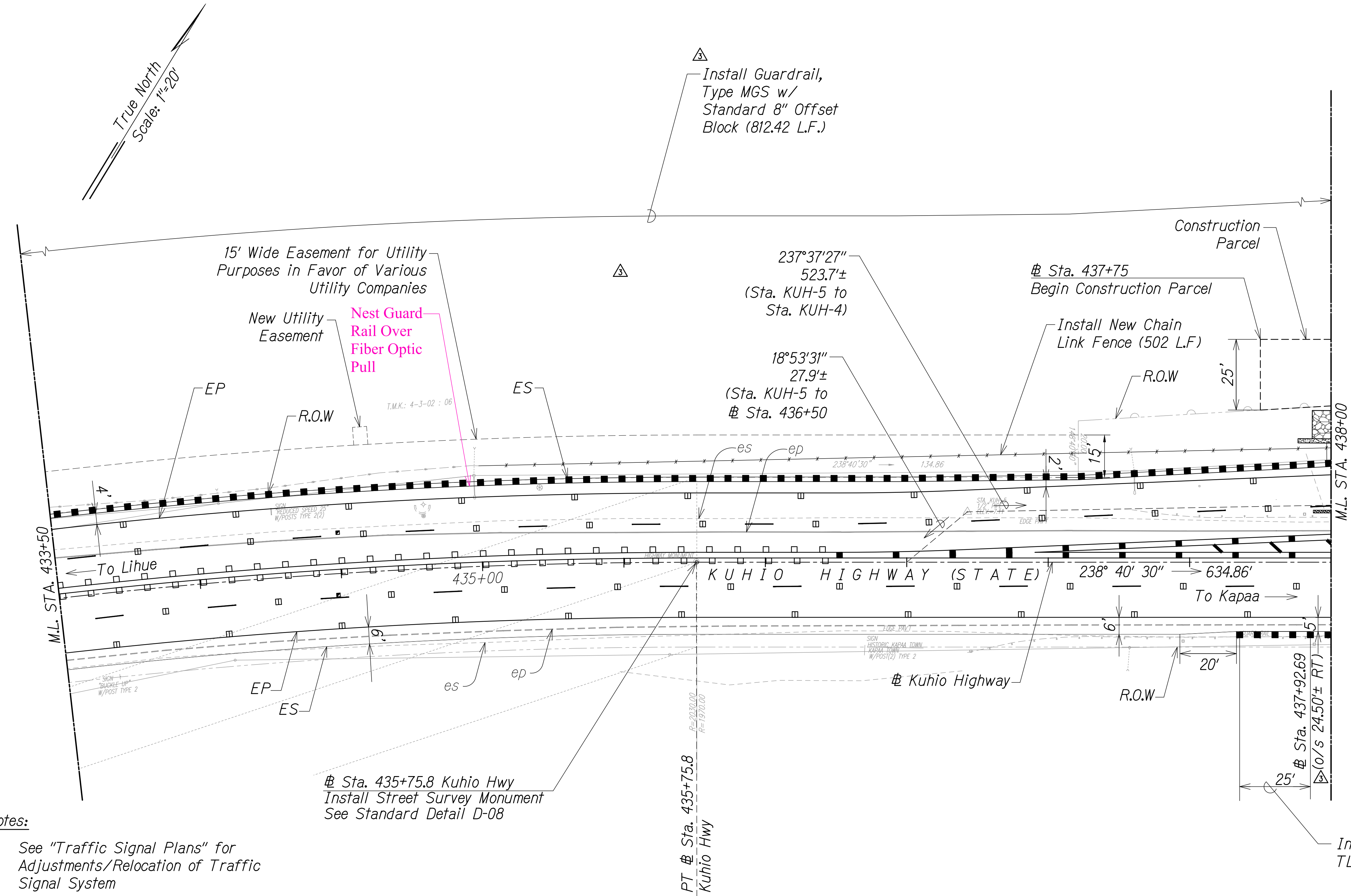
"AS-BUILT"

CO.ADD.31

SURVEY PLOTTED BY	DATE
DRAWN BY	
TRACED BY	
CHECKED BY	
ORIGINAL PLAN	
NOTE BOOK	
No.	



FED. ROAD DIST. NO.	STATE	FED. AID PROJ. NO.	FISCAL YEAR	SHEET NO.	TOTAL SHEETS
KAUAI	HAW.	NH-056-1(50)	2019	ADD.32	244



THESE PLANS HAVE BEEN PREPARED UTILIZING INFORMATION PROVIDED BY THE PROJECT CONTRACTOR. THE UPDATED CONSTRUCTION INFORMATION DEPICTED HEREIN HAS NOT BEEN VERIFIED FOR ACCURACY AND COMPLETENESS. NO REPRESENTATION IS BEING MADE TO ITS VALIDITY.

LEGEND FOR AS-BUILT POSTINGS	
	Squiggly line for as-built deletion
	Double line for as-built deletion
Roadway	Text for as-built posting

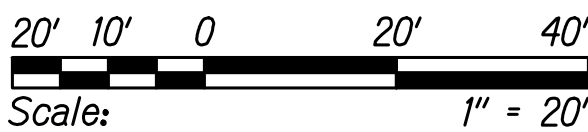
Notes:

- See "Traffic Signal Plans" for Adjustments/Relocation of Traffic Signal System
- See "Roadway Paving Plans" for Additional Roadway Geometrics
- Contractor shall provide shop drawings for MSKT-SP-MGS TL-2 End Treatment

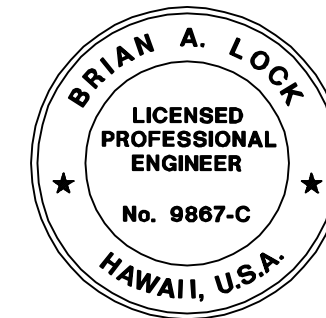
B.L. Kuhio Highway  
Curve Data

Δ	=	36°59' 00"
Δ/2	=	18°29' 30"
R	=	2000.00
T	=	668.87
Ch	=	1268.67
Lc	=	1290.96

GRAPHIC SCALE:



SURVEY PLOTTED BY	DATE
DRAWN BY	
TRACED BY	
CHECKED BY	
ORIGINAL PLAN	
NOTE BOOK	
No.	



THIS WORK WAS PREPARED BY ME OR UNDER MY SUPERVISION.  
WILSON OKAMOTO CORPORATION  
APRIL 30, 2020  
LIC. EXP. DATE

STATE OF HAWAII  
DEPARTMENT OF TRANSPORTATION  
HIGHWAYS DIVISION  
**ROADWAY PLAN**  
**KUHIO HIGHWAY SHORT-TERM IMPROVEMENTS KUAMOO ROAD TO TEMPORARY KAPAA BYPASS ROAD**  
Fed. Aid Proj. No. NH-056-1(50)  
Scale: 1" = 20' Date: July 2019  
SHEET No. RPT OF 16 SHEETS

DATE	REVISION
11/12/19	△ Reissuing plan for legibility; deleted callout; revised guardrail lengths
9/20/19	△ Reissuing plan for legibility only. No design changes have been made.

"AS-BUILT"

ADD.32



