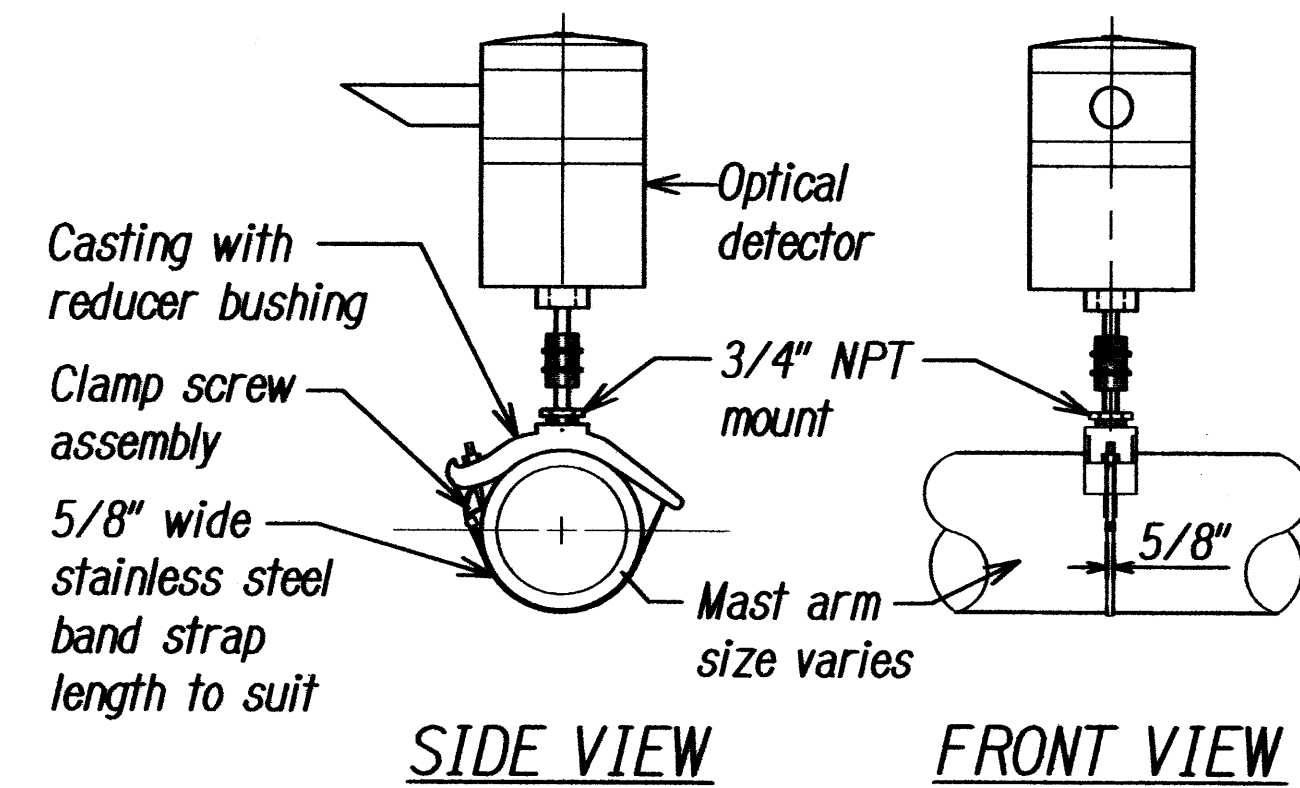


FED. ROAD DIST. NO.	STATE	FED. AID PROJ. NO.	FISCAL YEAR	SHEET NO.	TOTAL SHEETS
HAWAII	HAW.	HSIP-056-1154	2010	48	48

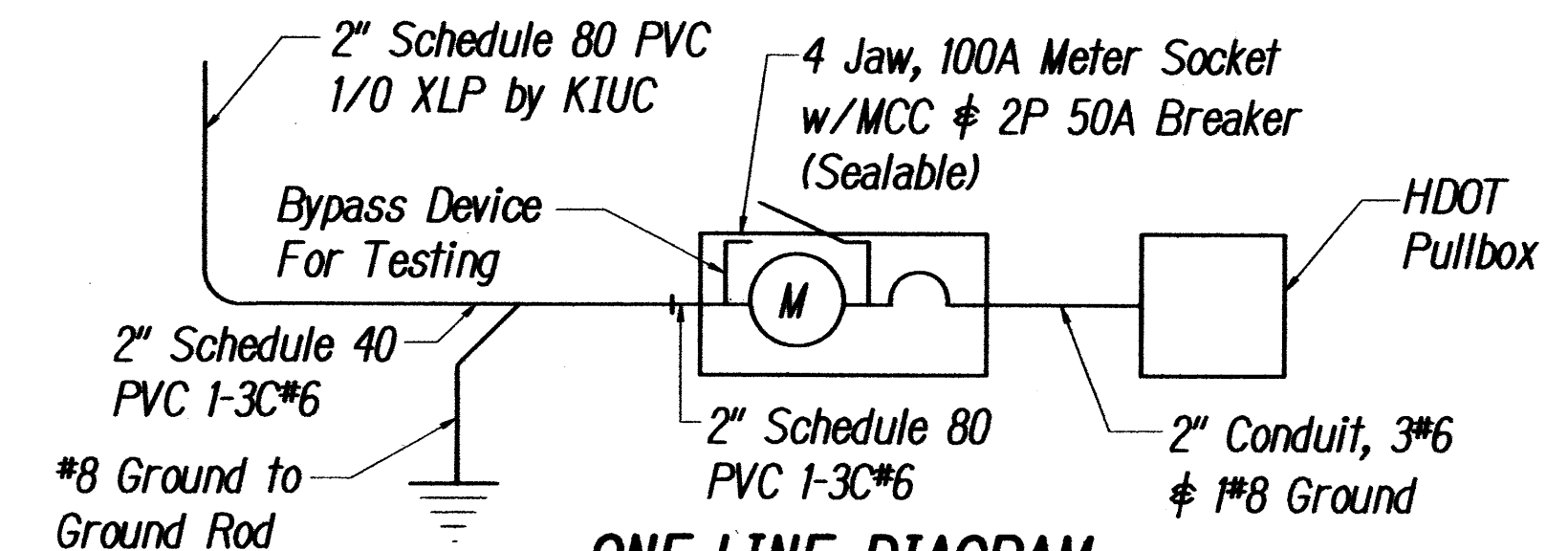
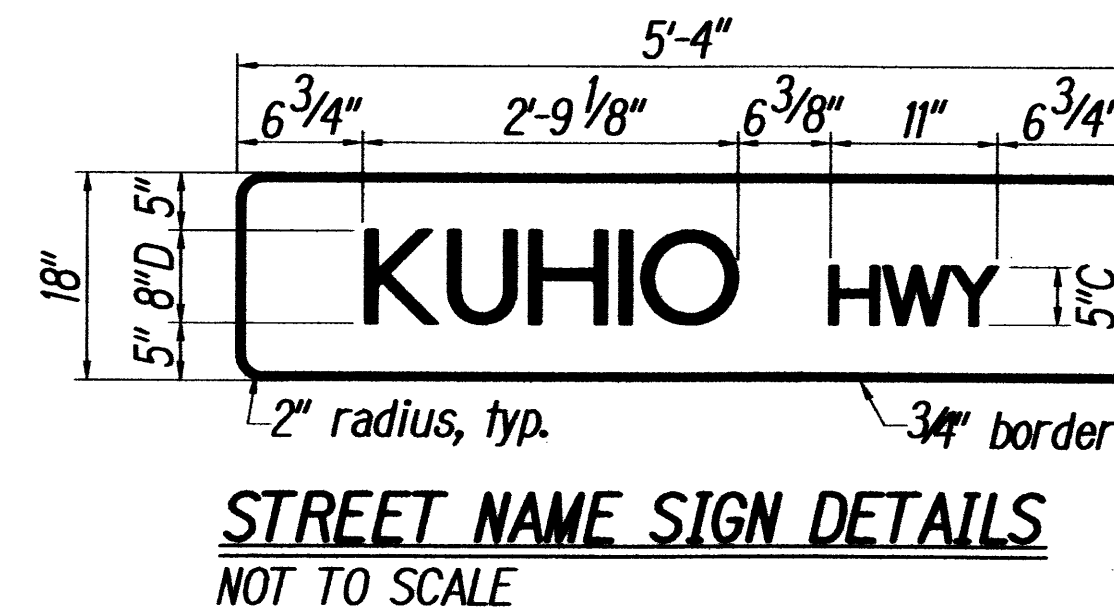


**NOTES:**

- Optical detector shall be "Model 711 preemption detector", or approved equal, unless noted otherwise in the special provisions.
- Support saddle assembly shall be "ASTRO MINI-BRAC, AB-0132-29", or approved equal, unless noted otherwise in the special provisions.

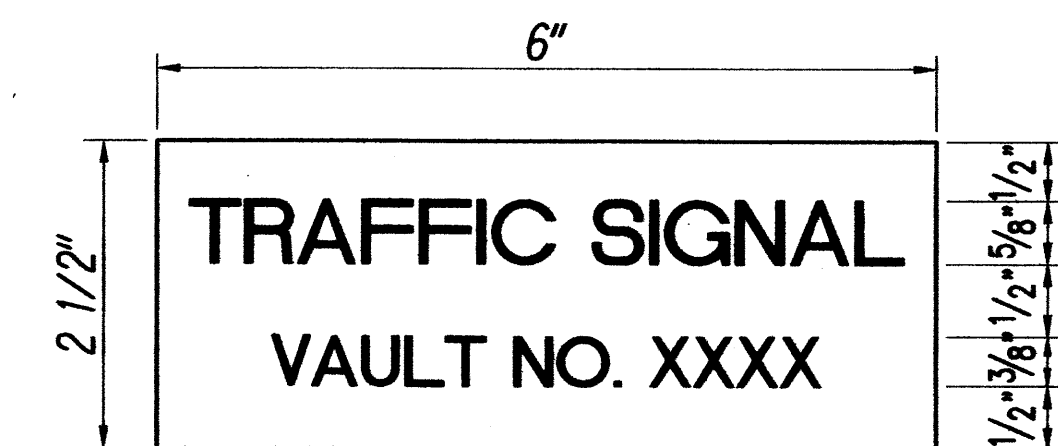
**OPTICAL DETECTOR FOR  
MAST ARM MOUNTING**

NOT TO SCALE



**SERVICE DATA**

- Service Voltage: 1 Phase  
3 Wire 120/240V
- Load Data: Connected-5KVA  
Estimated Demand-2KVA

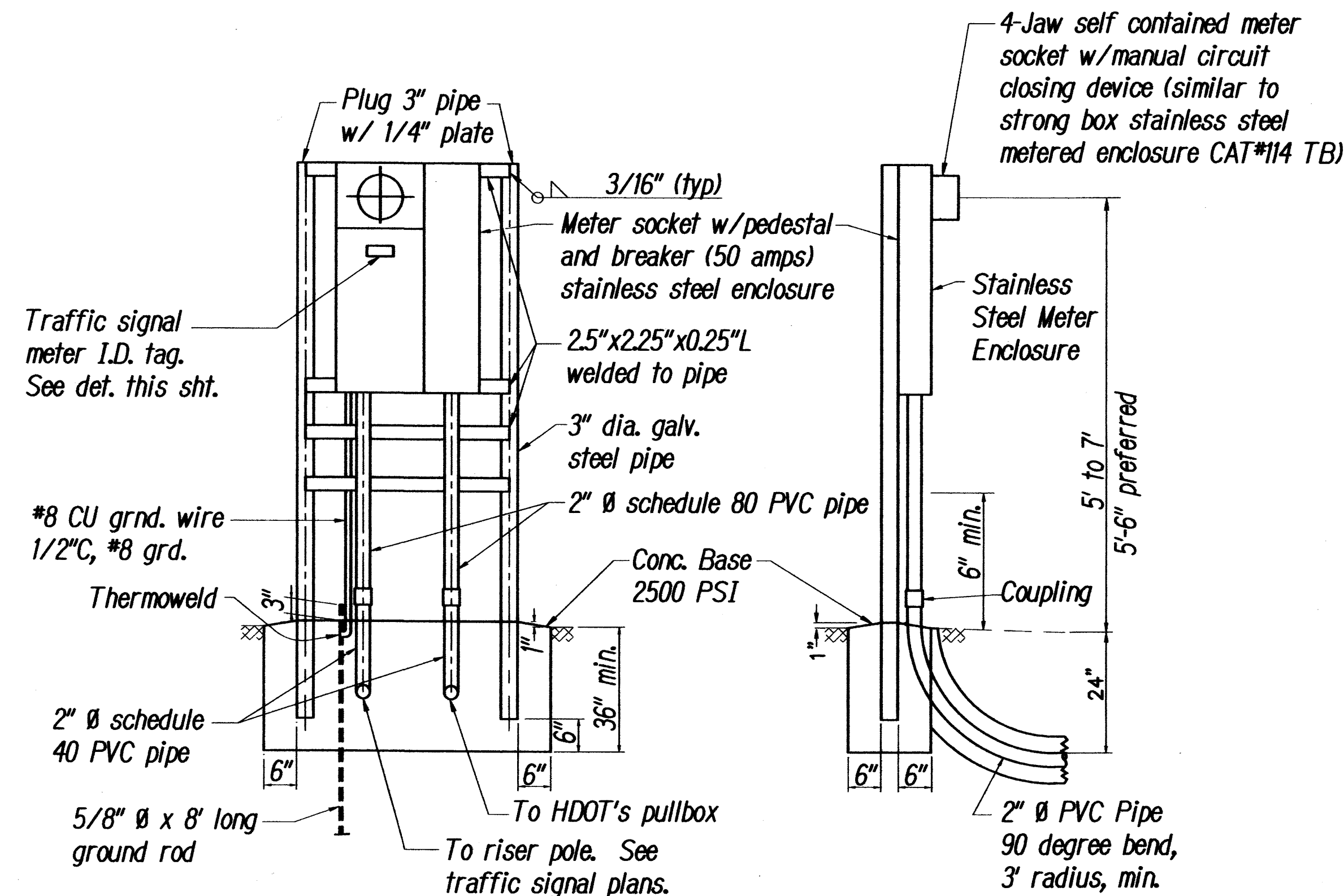


**NOTES:**

- Use 3-ply laminated flexible plastic, black-white-black. Thickness: Black cap sheet - 0.010", white base sheet - 0.052", black base sheet - 0.010".
- Attach to meter box using Scotch 3M Brand Very High Bond (VHB) double coated acrylic foam tape or equivalent.
- Letters/numbers shall be 1/16" stroke (white in color).
- Letters/numbers shall be inscribed by cutting through "black cap sheet" to expose white letters/numbers.

**METER I.D. TAG DETAIL**

NOT TO SCALE



**FRONT ELEVATION**

**SIDE ELEVATION**

**METER PEDESTAL FOR UNDERGROUND SERVICE**

NOT TO SCALE

DATE	_____
SURVEY ROUTED BY	_____
DRAWN BY	_____
DESIGNED BY	_____
CHECKED BY	_____
ORIGINAL PLAN	_____
NOTE BOOK	_____

KEITH K. NIIYA  
LICENSED PROFESSIONAL ENGINEER  
No. 8226-C  
HAWAII, U.S.A.

STATE OF HAWAII  
DEPARTMENT OF TRANSPORTATION  
HIGHWAYS DIVISION

**TRAFFIC SIGNAL DETAILS**

**KUHIO HIGHWAY**  
**Intersection Improvements**  
**at Kapule Highway**  
**Federal-Aid Project No. HSIP-056-1154**

Date: December 2010