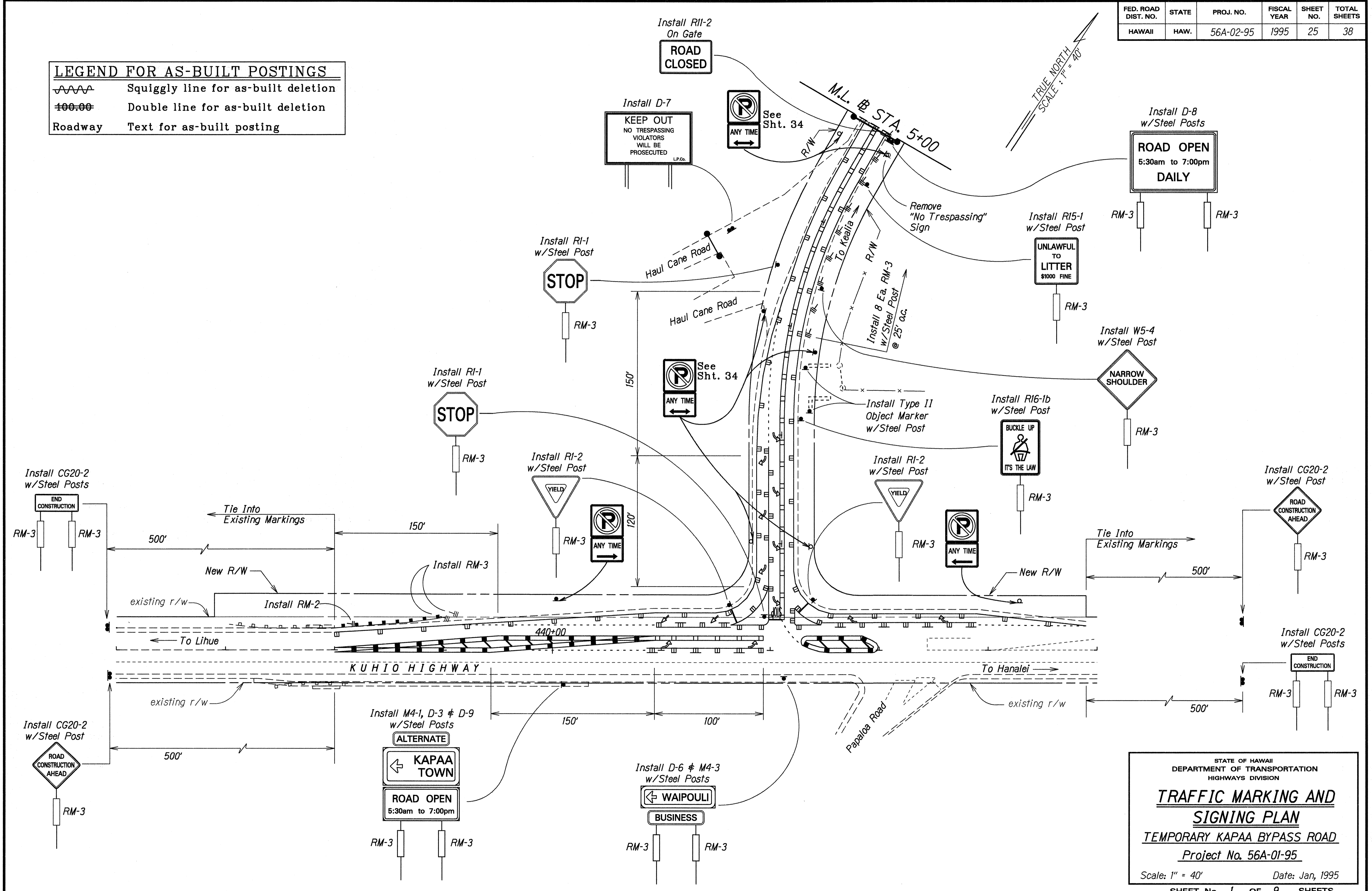


FED. ROAD DIST. NO.	STATE	PROJ. NO.	FISCAL YEAR	SHEET NO.	TOTAL SHEETS
HAWAII	HAW.	56A-02-95	1995	25	38

LEGEND FOR AS-BUILT POSTINGS

~~~~~ Squiggly line for as-built deletion  
 ==00.00 Double line for as-built deletion  
 Roadway Text for as-built posting



DATE: 1/95  
 SURVEY PLOTTED BY: [Name]  
 DRAWN BY: [Name]  
 TRACED BY: [Name]  
 NOTE BOOK KE-1 Gary QUANTITIES BY [Name]  
 CHECKED BY [Name]

STATE OF HAWAII  
 DEPARTMENT OF TRANSPORTATION  
 HIGHWAYS DIVISION

**TRAFFIC MARKING AND SIGNING PLAN**

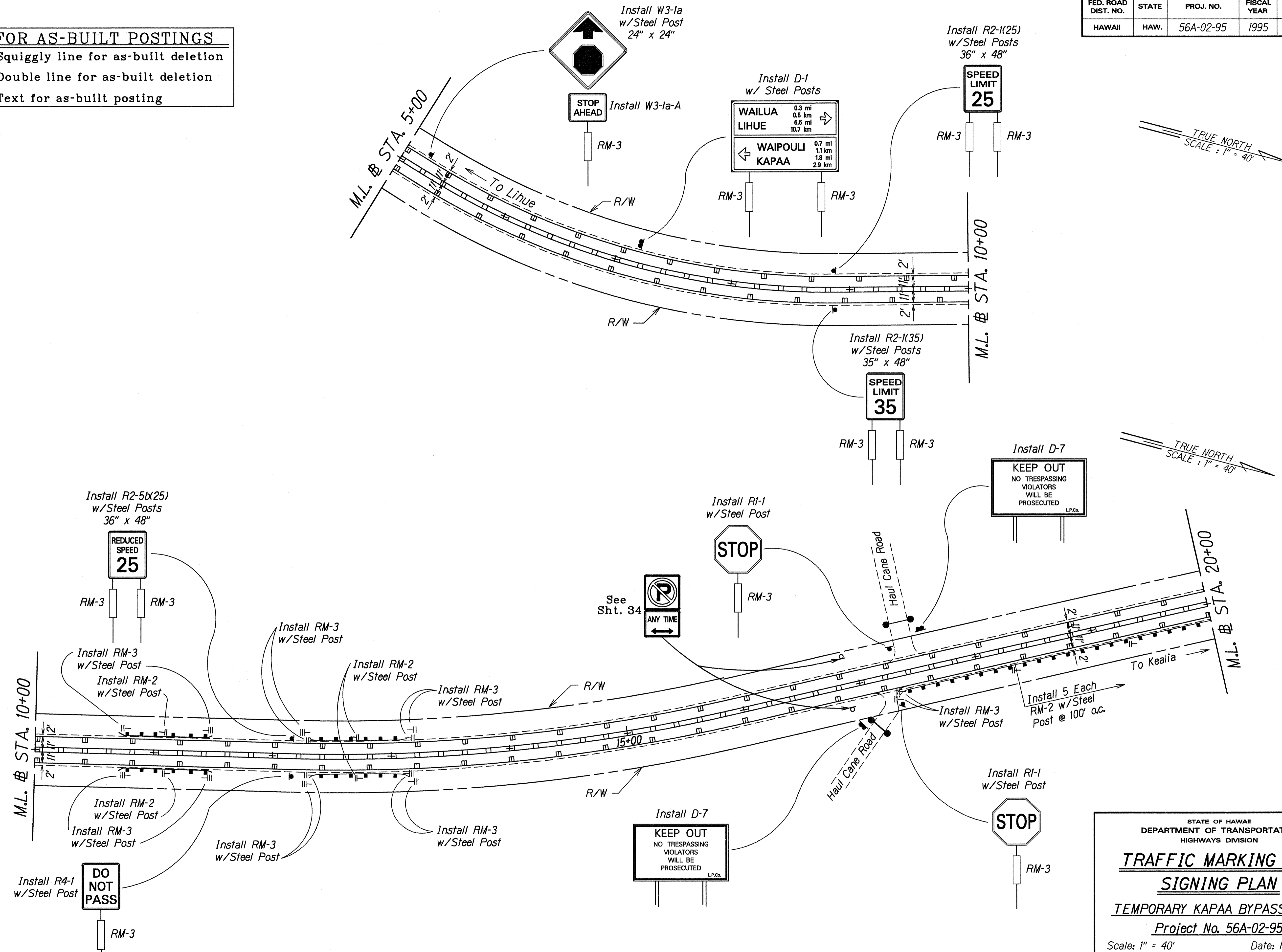
TEMPORARY KAPAA BYPASS ROAD  
 Project No. 56A-01-95

Scale: 1" = 40' Date: Jan, 1995

SHEET No. 1 OF 9 SHEETS

| FED. ROAD DIST. NO. | STATE | PROJ. NO. | FISCAL YEAR | SHEET NO. | TOTAL SHEETS |
|---------------------|-------|-----------|-------------|-----------|--------------|
| HAWAII              | HAW.  | 56A-02-95 | 1995        | 26        | 38           |

| LEGEND FOR AS-BUILT POSTINGS |                                     |
|------------------------------|-------------------------------------|
|                              | Squiggly line for as-built deletion |
|                              | Double line for as-built deletion   |
| Roadway                      | Text for as-built posting           |



TRUE NORTH  
SCALE: 1" = 40'

TRUE NORTH  
SCALE: 1" = 40'

DATE: 1995  
 SURVEY PLOTTED BY: [blank]  
 DRAWN BY: [blank]  
 TRACED BY: [blank]  
 NOTE BOOK: [blank]  
 REVISIONS BY: [blank]  
 CHECKED BY: [blank]

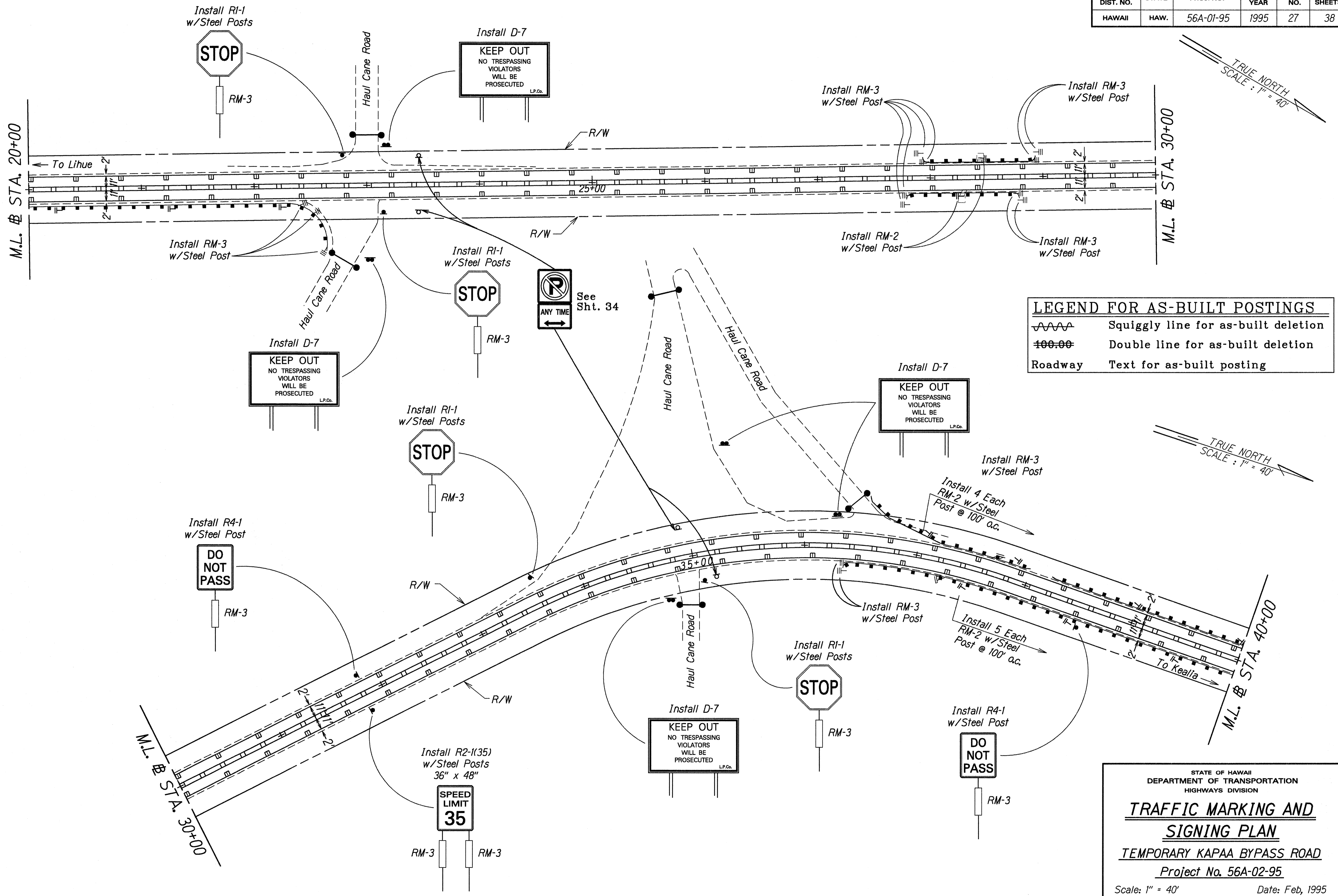
STATE OF HAWAII  
 DEPARTMENT OF TRANSPORTATION  
 HIGHWAYS DIVISION

**TRAFFIC MARKING AND  
 SIGNING PLAN**

TEMPORARY KAPAA BYPASS ROAD  
 Project No. 56A-02-95  
 Scale: 1" = 40' Date: Feb, 1995

SHEET No. 2 OF 9 SHEETS

| FED. ROAD DIST. NO. | STATE | PROJ. NO. | FISCAL YEAR | SHEET NO. | TOTAL SHEETS |
|---------------------|-------|-----------|-------------|-----------|--------------|
| HAWAII              | HAW.  | 56A-01-95 | 1995        | 27        | 38           |



| LEGEND FOR AS-BUILT POSTINGS |                                     |
|------------------------------|-------------------------------------|
|                              | Squiggly line for as-built deletion |
|                              | Double line for as-built deletion   |
| Roadway                      | Text for as-built posting           |

|                   |      |
|-------------------|------|
| SURVEY PLOTTED BY | DATE |
| DRAWN BY          | 1995 |
| TRACED BY         |      |
| NOTE BOOK         |      |
| KEY               |      |
| QUANTITIES BY     |      |
| CHECKED BY        |      |

STATE OF HAWAII  
DEPARTMENT OF TRANSPORTATION  
HIGHWAYS DIVISION

**TRAFFIC MARKING AND  
SIGNING PLAN**

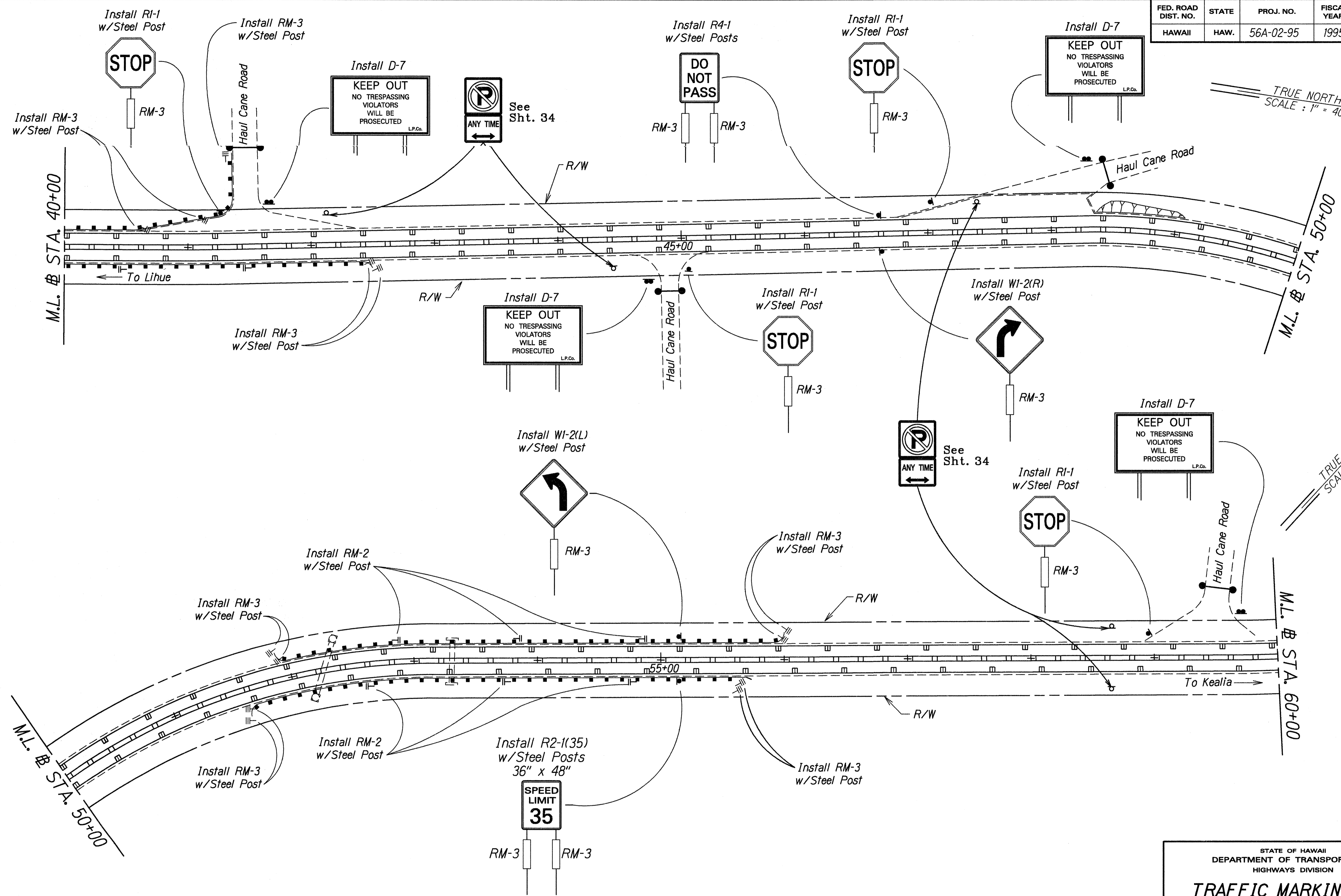
**TEMPORARY KAPAA BYPASS ROAD**

Project No. 56A-02-95

Scale: 1" = 40'      Date: Feb, 1995

SHEET No. 3 OF 9 SHEETS

| FED. ROAD DIST. NO. | STATE | PROJ. NO. | FISCAL YEAR | SHEET NO. | TOTAL SHEETS |
|---------------------|-------|-----------|-------------|-----------|--------------|
| HAWAII              | HAW.  | 56A-02-95 | 1995        | 28        | 38           |



TRUE NORTH  
SCALE: 1" = 40'

TRUE NORTH  
SCALE: 1" = 40'

|                   |      |
|-------------------|------|
| SURVEY PLOTTED BY | DATE |
| DRAWN BY          |      |
| TRACED BY         |      |
| QUANTITIES BY     |      |
| CHECKED BY        |      |
| ORIGINAL PLAN     |      |
| NOTE BOOK         |      |
| KE-1 Gary         |      |
| NAIP/3/3/95       |      |

| LEGEND FOR AS-BUILT POSTINGS |                                     |
|------------------------------|-------------------------------------|
|                              | Squiggly line for as-built deletion |
|                              | Double line for as-built deletion   |
|                              | Roadway Text for as-built posting   |

STATE OF HAWAII  
DEPARTMENT OF TRANSPORTATION  
HIGHWAYS DIVISION

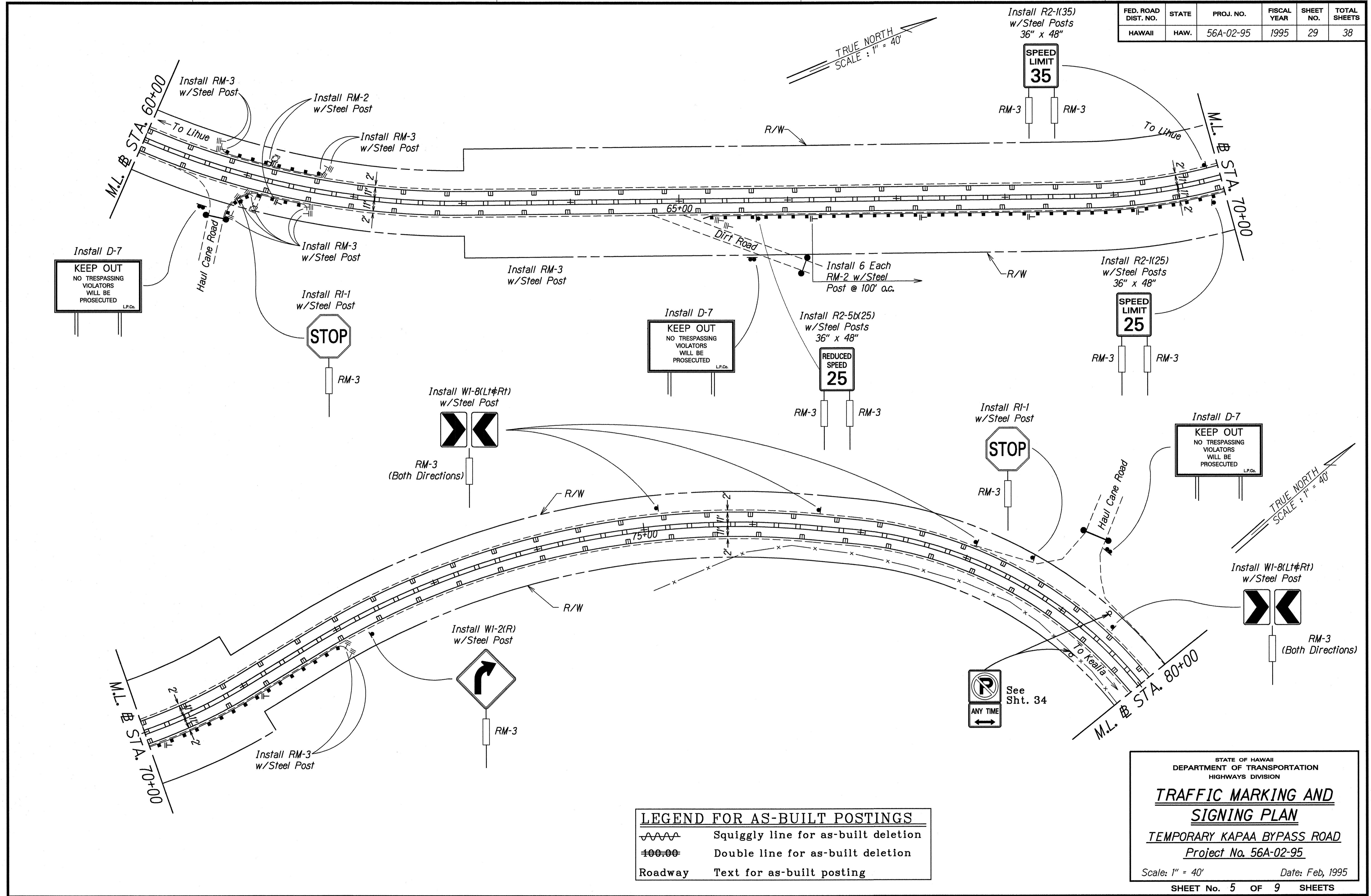
**TRAFFIC MARKING AND  
SIGNING PLAN**

TEMPORARY KAPAA BYPASS ROAD  
Project No. 56A-02-95

Scale: 1" = 40' Date: Feb, 1995

SHEET No. 4 OF 9 SHEETS

| FED. ROAD DIST. NO. | STATE | PROJ. NO. | FISCAL YEAR | SHEET NO. | TOTAL SHEETS |
|---------------------|-------|-----------|-------------|-----------|--------------|
| HAWAII              | HAW.  | 56A-02-95 | 1995        | 29        | 38           |



|                   |           |
|-------------------|-----------|
| ORIGINAL PLAN     | DATE      |
| SURVEY PLOTTED BY | X         |
| DRAWN BY          | M. J. ... |
| NOTES BOOK        | ...       |
| QUANTITIES BY     | ...       |
| CHECKED BY        | ...       |

| LEGEND FOR AS-BUILT POSTINGS |                                     |
|------------------------------|-------------------------------------|
|                              | Squiggly line for as-built deletion |
|                              | Double line for as-built deletion   |
| Roadway                      | Text for as-built posting           |

STATE OF HAWAII  
DEPARTMENT OF TRANSPORTATION  
HIGHWAYS DIVISION

**TRAFFIC MARKING AND SIGNING PLAN**

TEMPORARY KAPAA BYPASS ROAD  
Project No. 56A-02-95

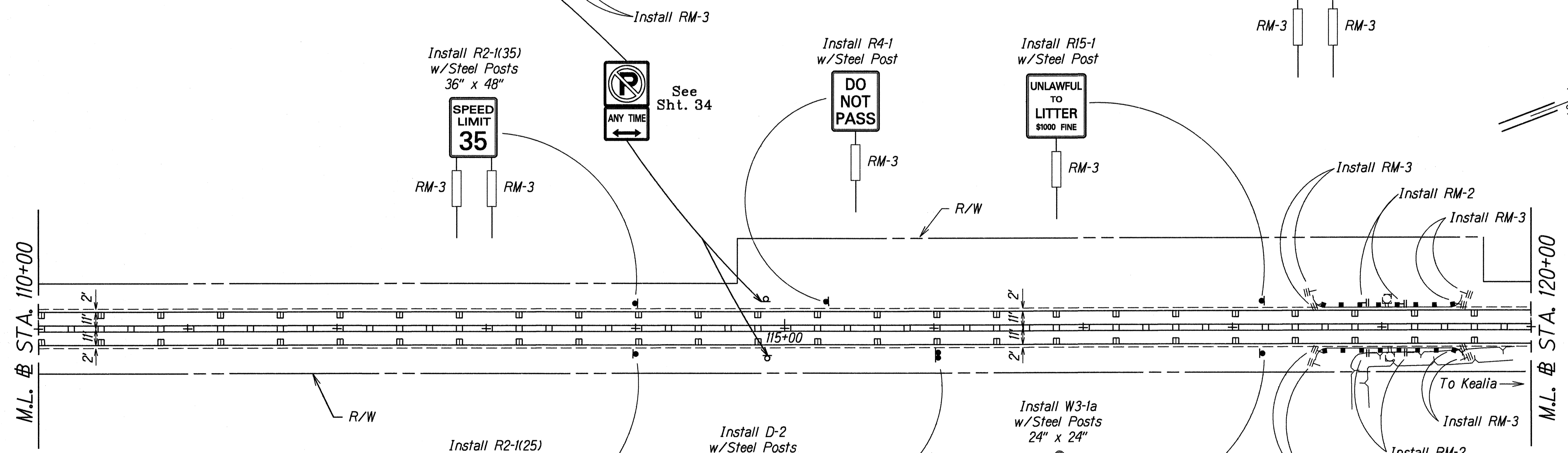
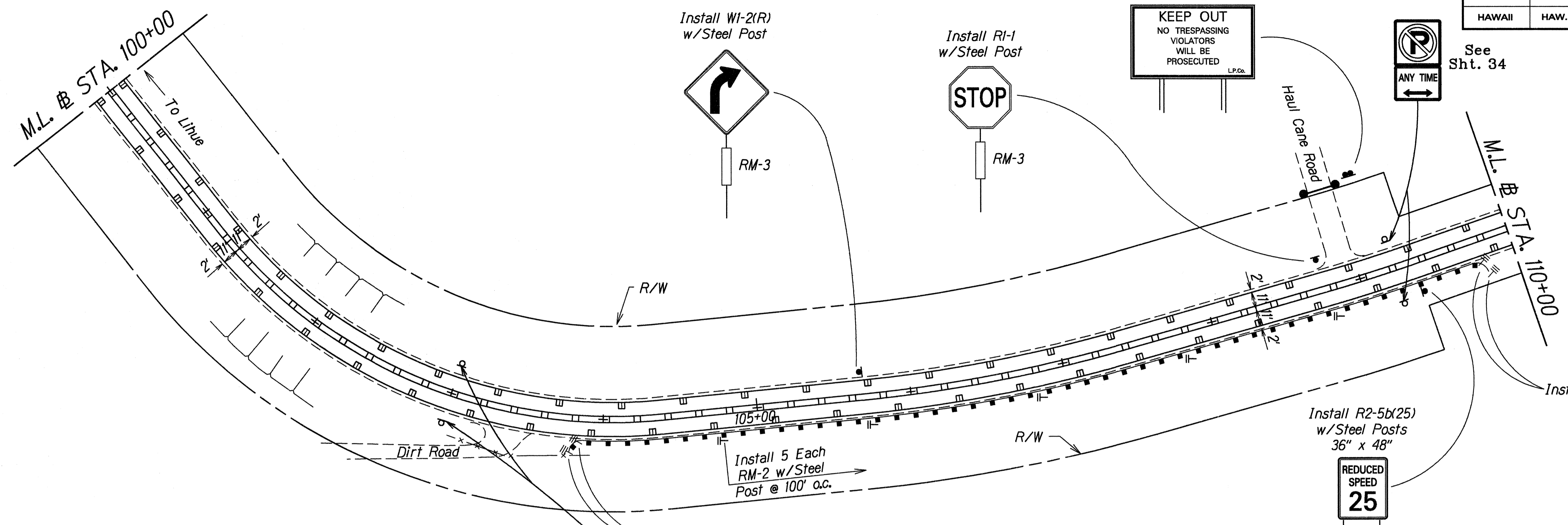
Scale: 1" = 40' Date: Feb, 1995

SHEET No. 5 OF 9 SHEETS

"AS-BUILT"



| FED. ROAD DIST. NO. | STATE | PROJ. NO. | FISCAL YEAR | SHEET NO. | TOTAL SHEETS |
|---------------------|-------|-----------|-------------|-----------|--------------|
| HAWAII              | HAW.  | 56A-02-95 | 1995        | 31        | 38           |



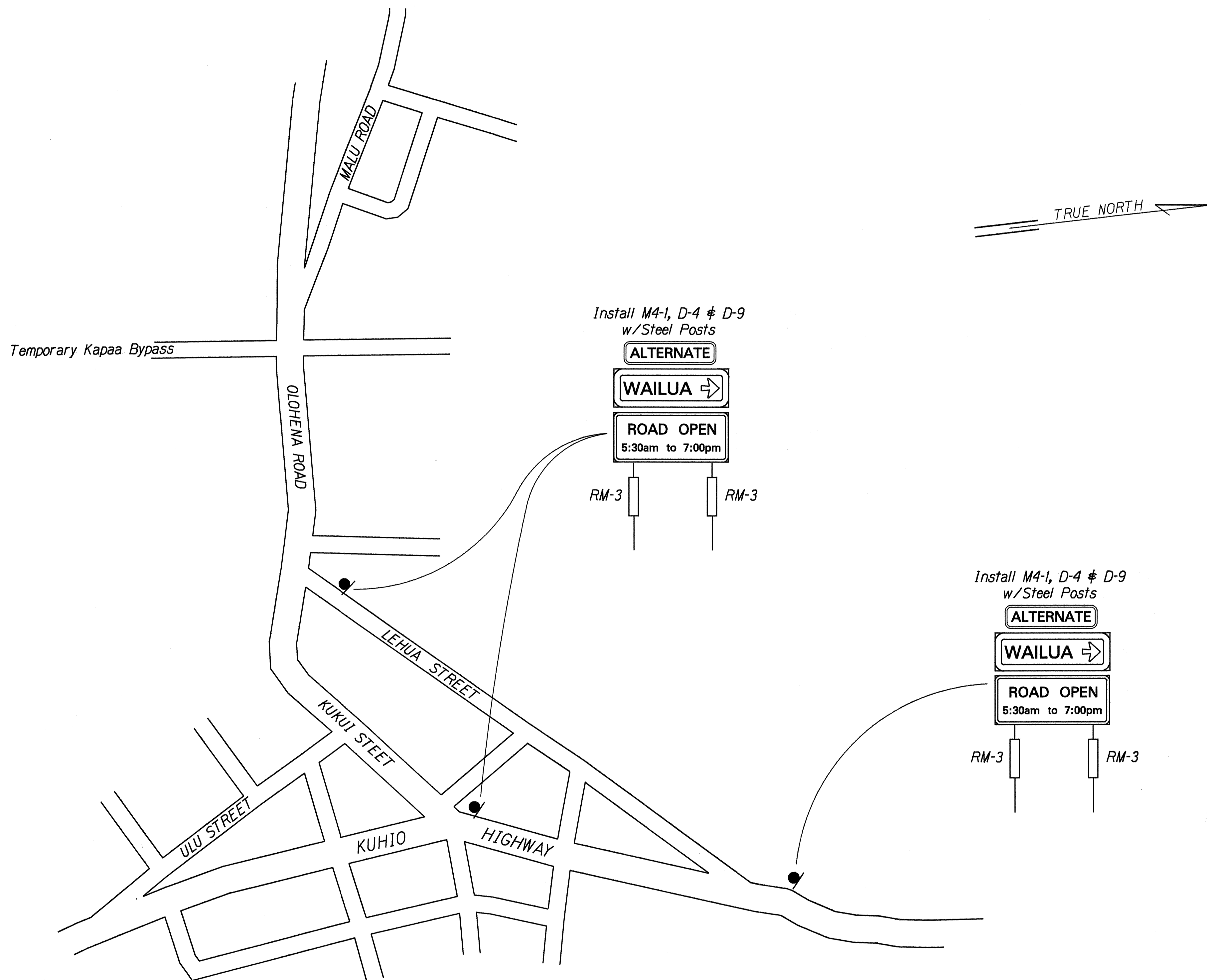
| LEGEND FOR AS-BUILT POSTINGS |                                     |
|------------------------------|-------------------------------------|
|                              | Squiggly line for as-built deletion |
|                              | Double line for as-built deletion   |
| Roadway                      | Text for as-built posting           |

SURVEY PLOTTED BY \_\_\_\_\_ DATE \_\_\_\_\_  
 DRAWN BY \_\_\_\_\_  
 CHECKED BY \_\_\_\_\_  
 NOTE BOOK \_\_\_\_\_  
 KE-1 Gary \_\_\_\_\_  
 QUANTITIES BY \_\_\_\_\_  
 CHECKED BY \_\_\_\_\_

STATE OF HAWAII  
 DEPARTMENT OF TRANSPORTATION  
 HIGHWAYS DIVISION  
**TRAFFIC MARKING AND SIGNING PLAN**  
 TEMPORARY KAPAA BYPASS ROAD  
 Project No. 56A-02-95  
 Scale: 1" = 40' Date: Feb, 1995  
 SHEET No. 7 OF 9 SHEETS



| FED. ROAD DIST. NO. | STATE | PROJ. NO. | FISCAL YEAR | SHEET NO. | TOTAL SHEETS |
|---------------------|-------|-----------|-------------|-----------|--------------|
| HAWAII              | HAW.  | 56A-02-95 | 1995        | 33        | 38           |



**ADDITIONAL SIGNS**  
Not To Scale

|                   |      |
|-------------------|------|
| ORIGINAL PLAN     | DATE |
| SURVEY PLOTTED BY | 2/95 |
| DRAWN BY          |      |
| NOTE BOOK         |      |
| DESIGNED BY       |      |
| QUANTITIES BY     |      |
| CHECKED BY        |      |

STATE OF HAWAII  
DEPARTMENT OF TRANSPORTATION  
HIGHWAYS DIVISION

**TRAFFIC MARKING AND  
SIGNING PLAN**

**TEMPORARY KAPAA BYPASS ROAD**  
Project No. 56A-02-95

Scale: As Shown Date: Feb, 1995

SHEET No. 9 OF 9 SHEETS