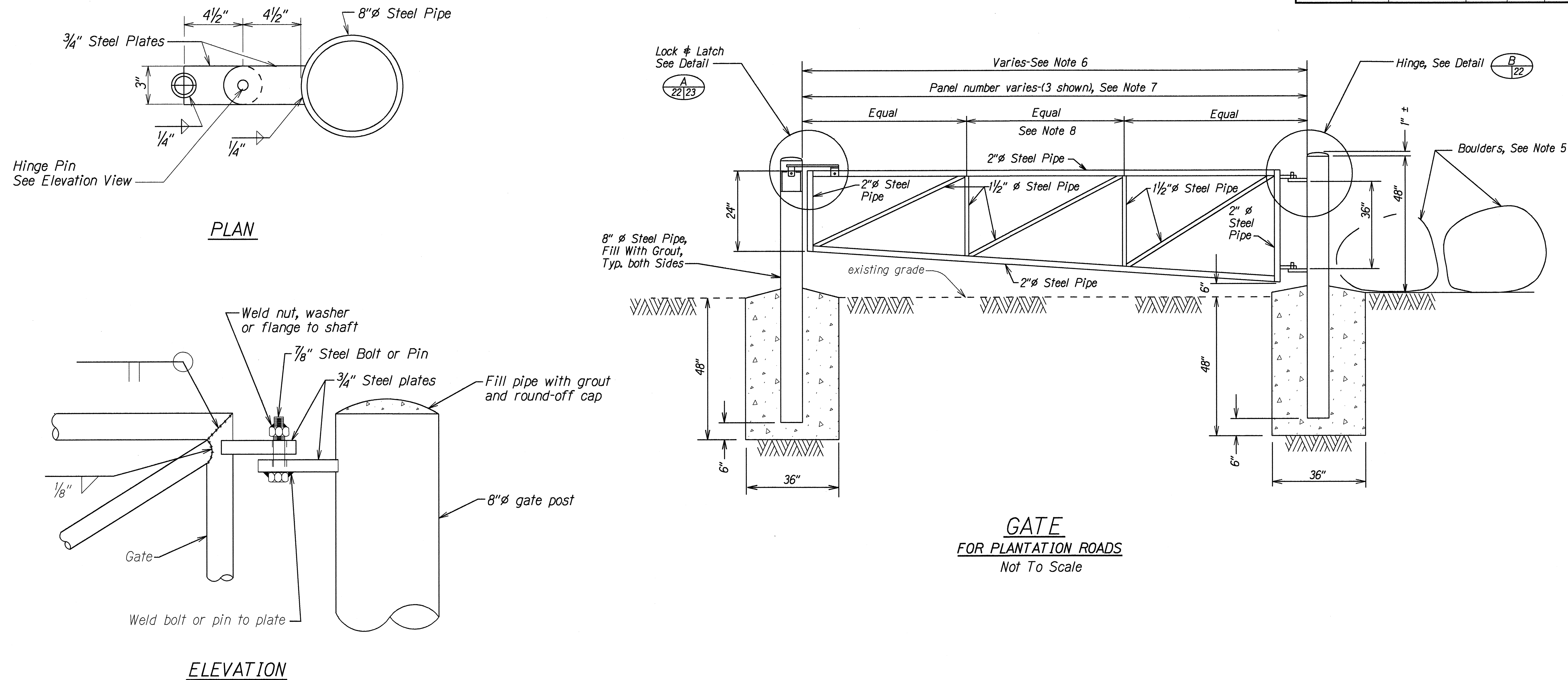


| FED. ROAD DIST. NO. | STATE | PROJ. NO. | FISCAL YEAR | SHEET NO. | TOTAL SHEETS |
|---------------------|-------|-----------|-------------|-----------|--------------|
| HAWAII | HAW. | 56A-02-95 | 1995 | 23 | 38 |



HINGE DETAILS

Not To Scale

- NOTES:**
1. All metal items , including pipes, plates, nuts, bolts, washer, etc., shall be galvanized prior to fabrication. Steel pipes shall be standard weight, or better.
 2. After installation, all metal items shall be covered with 6-inch wide, red/white reflective tape. This work shall be considered incidental to Haul Cane Road Gate and will not be paid for separately.
 3. Exact gate details may vary with approval of the engineer.
 4. Existing gates, or parts therefrom, may be re-used in new gates , if undamaged.

5. Provide boulders or approved alternate to close gaps between gate and natural barriers. Boulders shall be 300 lbs. min. weight each.
6. Gate width to be equal to haul cane road or bypass road width + 3 feet, unless otherwise noted on the plans.
7. Number of panels may vary from 2 min. to 6 max.
8. Panels shall be of equal lengths and varies from 4' min to 7' max.

STATE OF HAWAII
DEPARTMENT OF TRANSPORTATION
HIGHWAYS DIVISION

GATE DETAILS

TEMPORARY KAPAA BYPASS ROAD

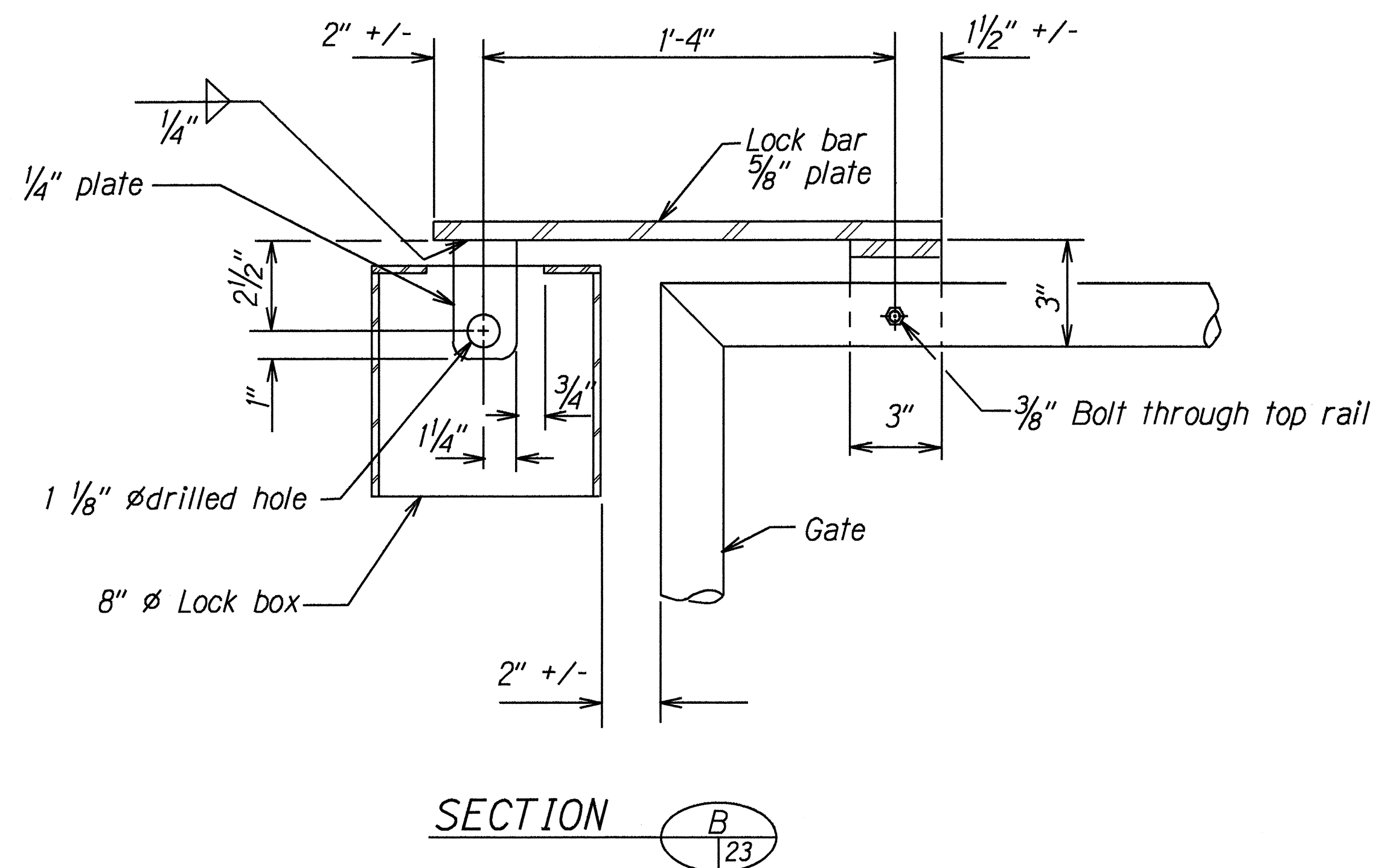
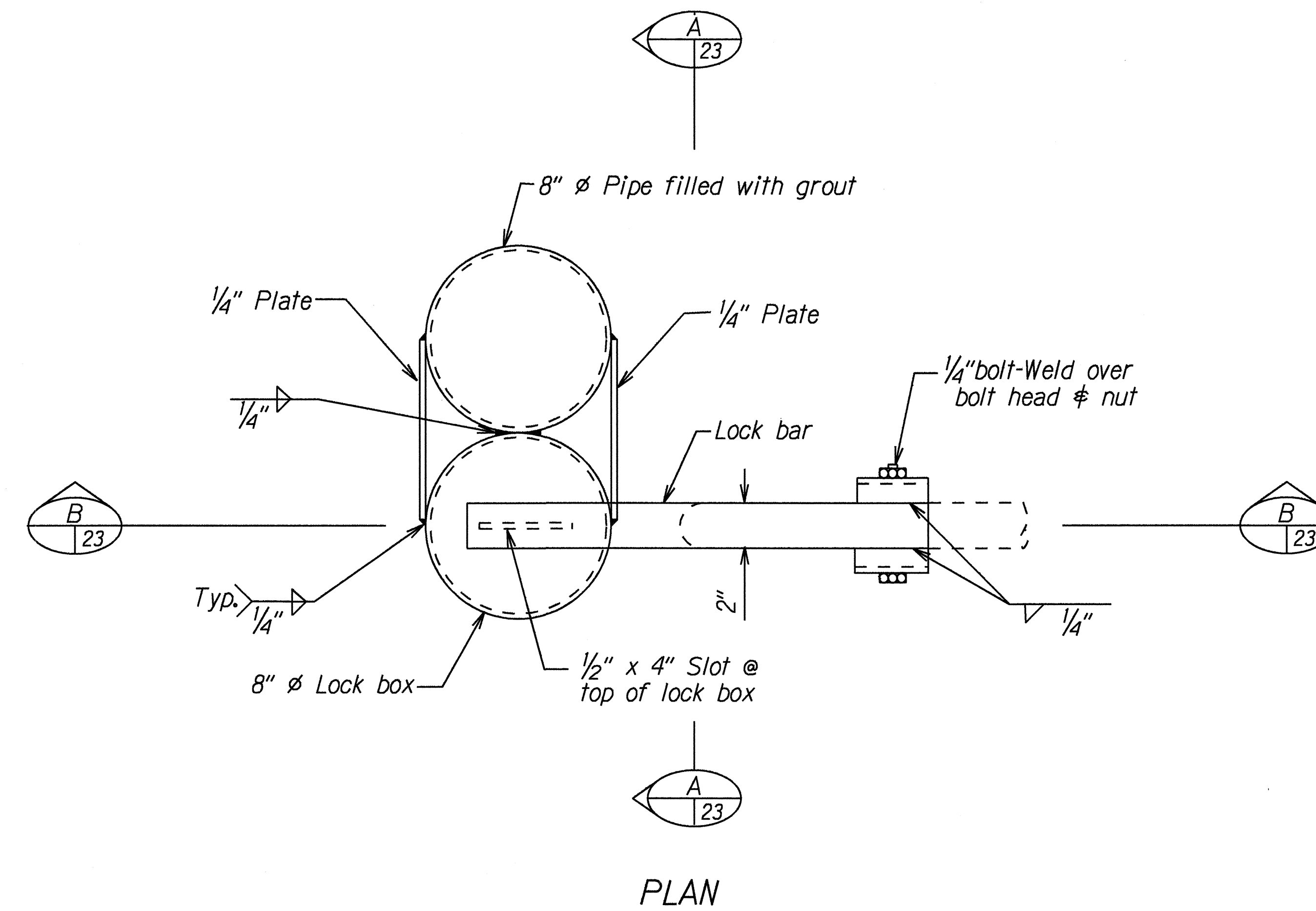
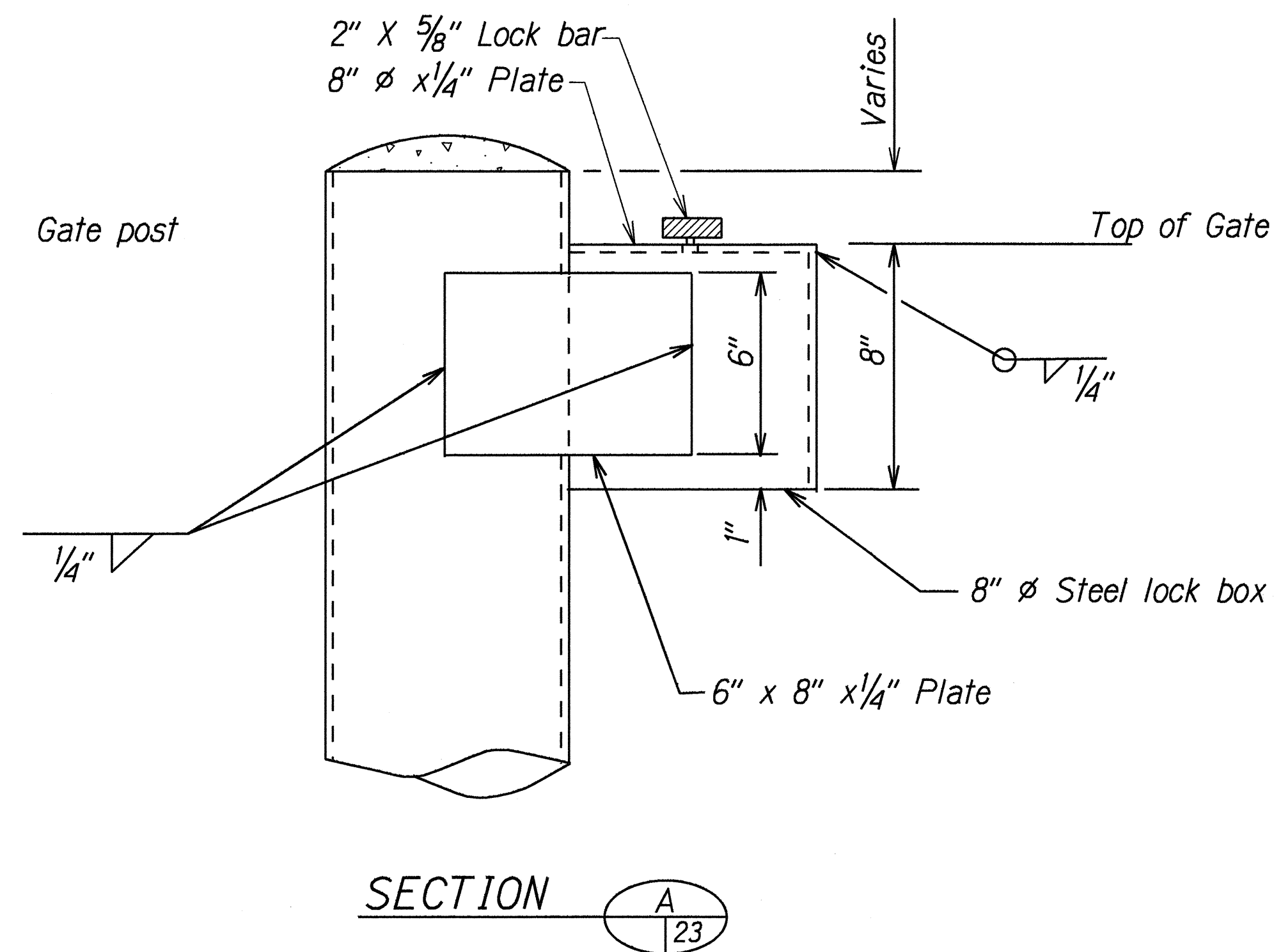
Project No. 56A-02-95

Scale: As Shown Date: Jan, 1995

SHEET No. 1 OF 2 SHEETS

| | |
|-------------------|------|
| SURVEY PLOTTED BY | DATE |
| DRAWN BY | |
| DESIGNED BY | |
| CHECKED BY | |
| NOTE BOOK | |
| RE-1 Slew | |
| RE-2 Slew | |
| RE-3 Slew | |
| RE-4 Slew | |
| RE-5 Slew | |
| RE-6 Slew | |
| RE-7 Slew | |
| RE-8 Slew | |
| RE-9 Slew | |
| RE-10 Slew | |
| RE-11 Slew | |
| RE-12 Slew | |
| RE-13 Slew | |
| RE-14 Slew | |
| RE-15 Slew | |
| RE-16 Slew | |
| RE-17 Slew | |
| RE-18 Slew | |
| RE-19 Slew | |
| RE-20 Slew | |
| RE-21 Slew | |
| RE-22 Slew | |
| RE-23 Slew | |
| RE-24 Slew | |
| RE-25 Slew | |
| RE-26 Slew | |
| RE-27 Slew | |
| RE-28 Slew | |
| RE-29 Slew | |
| RE-30 Slew | |
| RE-31 Slew | |
| RE-32 Slew | |
| RE-33 Slew | |
| RE-34 Slew | |
| RE-35 Slew | |
| RE-36 Slew | |
| RE-37 Slew | |
| RE-38 Slew | |
| RE-39 Slew | |
| RE-40 Slew | |
| RE-41 Slew | |
| RE-42 Slew | |
| RE-43 Slew | |
| RE-44 Slew | |
| RE-45 Slew | |
| RE-46 Slew | |
| RE-47 Slew | |
| RE-48 Slew | |
| RE-49 Slew | |
| RE-50 Slew | |
| RE-51 Slew | |
| RE-52 Slew | |
| RE-53 Slew | |
| RE-54 Slew | |
| RE-55 Slew | |
| RE-56 Slew | |
| RE-57 Slew | |
| RE-58 Slew | |
| RE-59 Slew | |
| RE-60 Slew | |
| RE-61 Slew | |
| RE-62 Slew | |
| RE-63 Slew | |
| RE-64 Slew | |
| RE-65 Slew | |
| RE-66 Slew | |
| RE-67 Slew | |
| RE-68 Slew | |
| RE-69 Slew | |
| RE-70 Slew | |
| RE-71 Slew | |
| RE-72 Slew | |
| RE-73 Slew | |
| RE-74 Slew | |
| RE-75 Slew | |
| RE-76 Slew | |
| RE-77 Slew | |
| RE-78 Slew | |
| RE-79 Slew | |
| RE-80 Slew | |
| RE-81 Slew | |
| RE-82 Slew | |
| RE-83 Slew | |
| RE-84 Slew | |
| RE-85 Slew | |
| RE-86 Slew | |
| RE-87 Slew | |
| RE-88 Slew | |
| RE-89 Slew | |
| RE-90 Slew | |
| RE-91 Slew | |
| RE-92 Slew | |
| RE-93 Slew | |
| RE-94 Slew | |
| RE-95 Slew | |
| RE-96 Slew | |
| RE-97 Slew | |
| RE-98 Slew | |
| RE-99 Slew | |
| RE-100 Slew | |

| FED. ROAD DIST. NO. | STATE | PROJ. NO. | FISCAL YEAR | SHEET NO. | TOTAL SHEETS |
|---------------------|-------|-----------|-------------|-----------|--------------|
| HAWAII | HAW. | 56A-02-95 | 1995 | 24 | 38 |



LOCK BOX AND LOCK BAR DETAILS

Scale: 3"=1'-0"

A
22/23

| | |
|--|-----------------|
| STATE OF HAWAII DEPARTMENT OF TRANSPORTATION HIGHWAYS DIVISION | |
| GATE DETAILS | |
| TEMPORARY KAPAA BYPASS ROAD | |
| Project No. 56A-02-95 | |
| Scale: As Shown | Date: Jan, 1995 |
| SHEET No. 2 OF 2 SHEETS | |