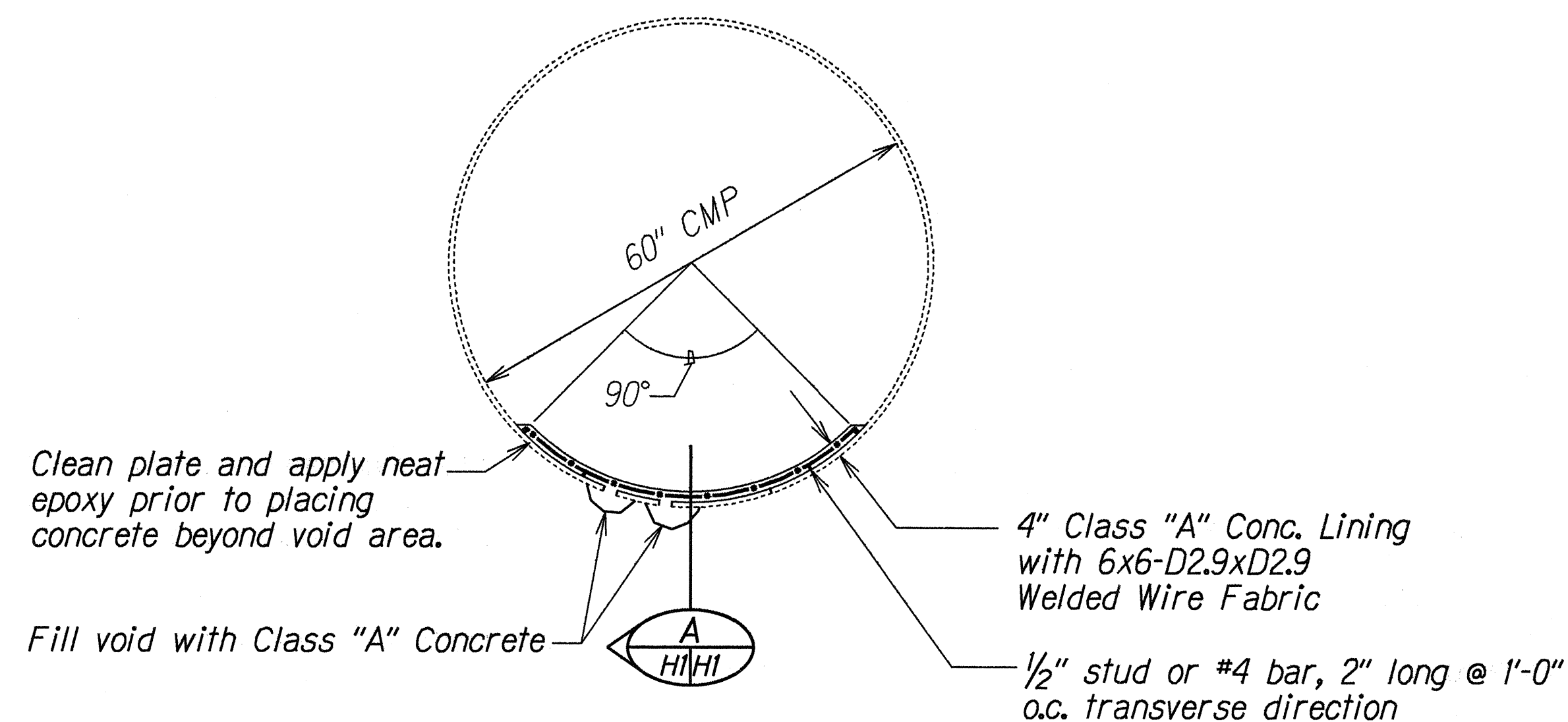
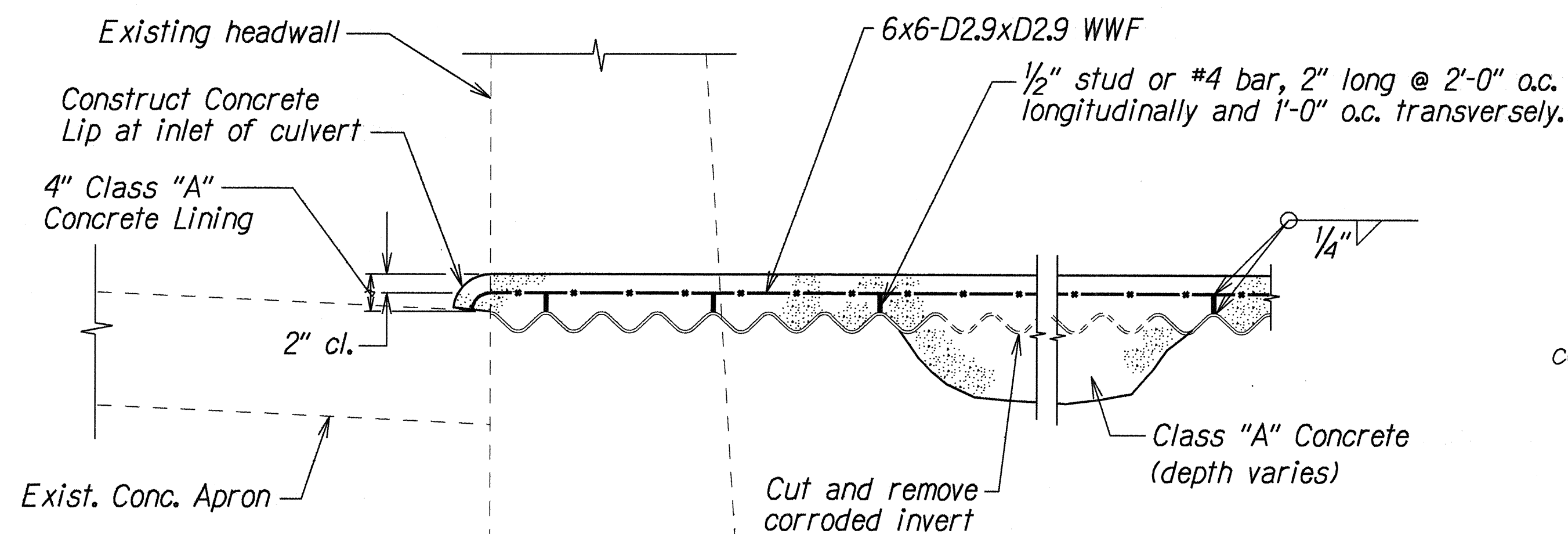


FED. ROAD DIST. NO.	STATE	PROJ. NO.	FISCAL YEAR	SHEET NO.	TOTAL SHEETS
HAWAII	HAW.	56D-01-95M	1995	2	2



SECTION OF 60" CMP  
Scale: 3/4"=1'-0"

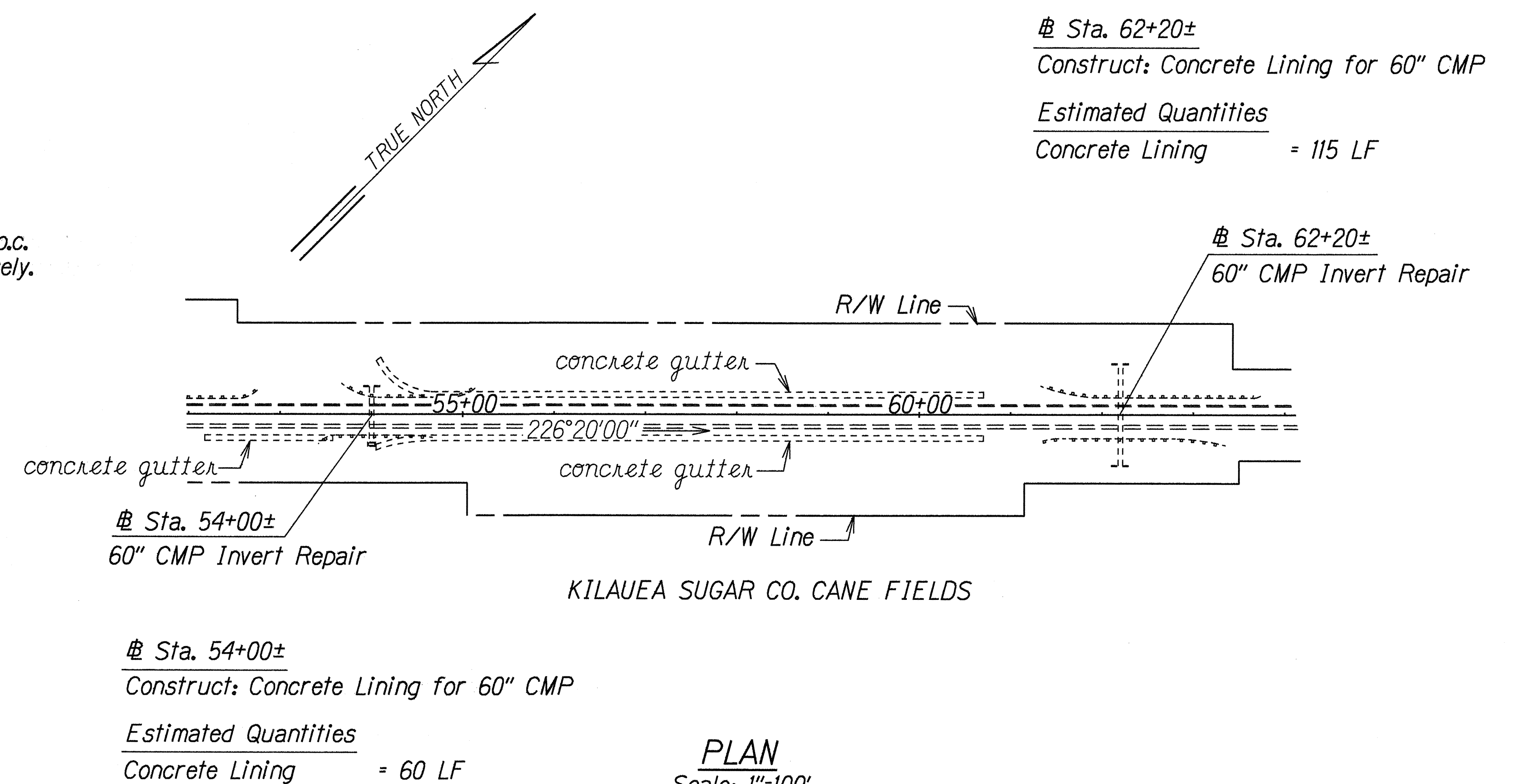


SECTION A  
Scale: 1"=1'-0"

TYPICAL DETAILS OF 60" CORRUGATED METAL PIPE INVERT REPAIR

GENERAL NOTES:

1. The culvert surface to be in contact with the concrete shall be clean and dry to the satisfaction of the engineer. Badly corroded sections shall be cut and removed. Epoxy shall be neatly applied to the clean metal surface prior to placing concrete.
2. The welded wire fabric steel reinforcement shall be placed two inches above the crest of corrugations by welding to studs. The studs shall be welded to the structural plate culvert at two feet on centers longitudinally and 1'-0" transversely. If lapping of the welded wire fabric is necessary, it shall be lapped a minimum of six inches.
3. The welded wire fabric, studs and epoxy shall not be paid for separately but shall be considered incidental to concrete.
4. The concrete culvert lining shall be scored 3/4-inch deep transversely along the crest of corrugations, 20 feet on-center.



DATE	Mar. 1995
SURVEY PLANNED BY	
DRAWN BY	A. Muma
DESIGNED BY	C. Matsuda
QUANTITIES BY	
CHECKED BY	

STATE OF HAWAII  
DEPARTMENT OF TRANSPORTATION  
HIGHWAYS DIVISION

DRAINAGE PLAN & DETAILS  
  
KUHIO HIGHWAY  
Drainage Repairs  
PROJ. NO. 56D-01-95M  
Scale: As Shown Date: Mar, 1995  
SHEET No. HI OF 1 SHEETS