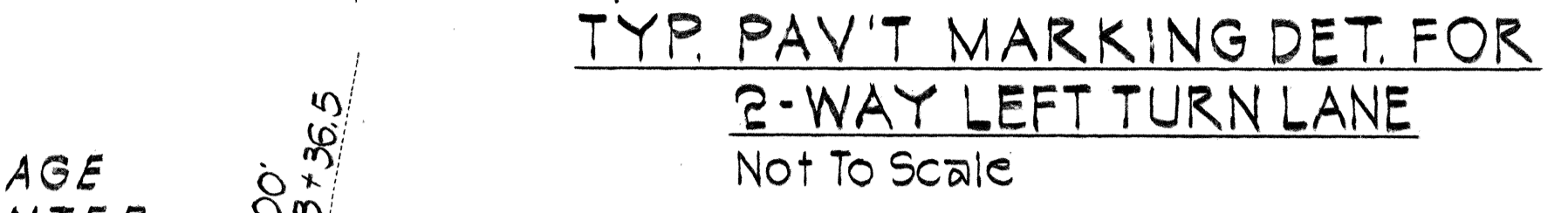
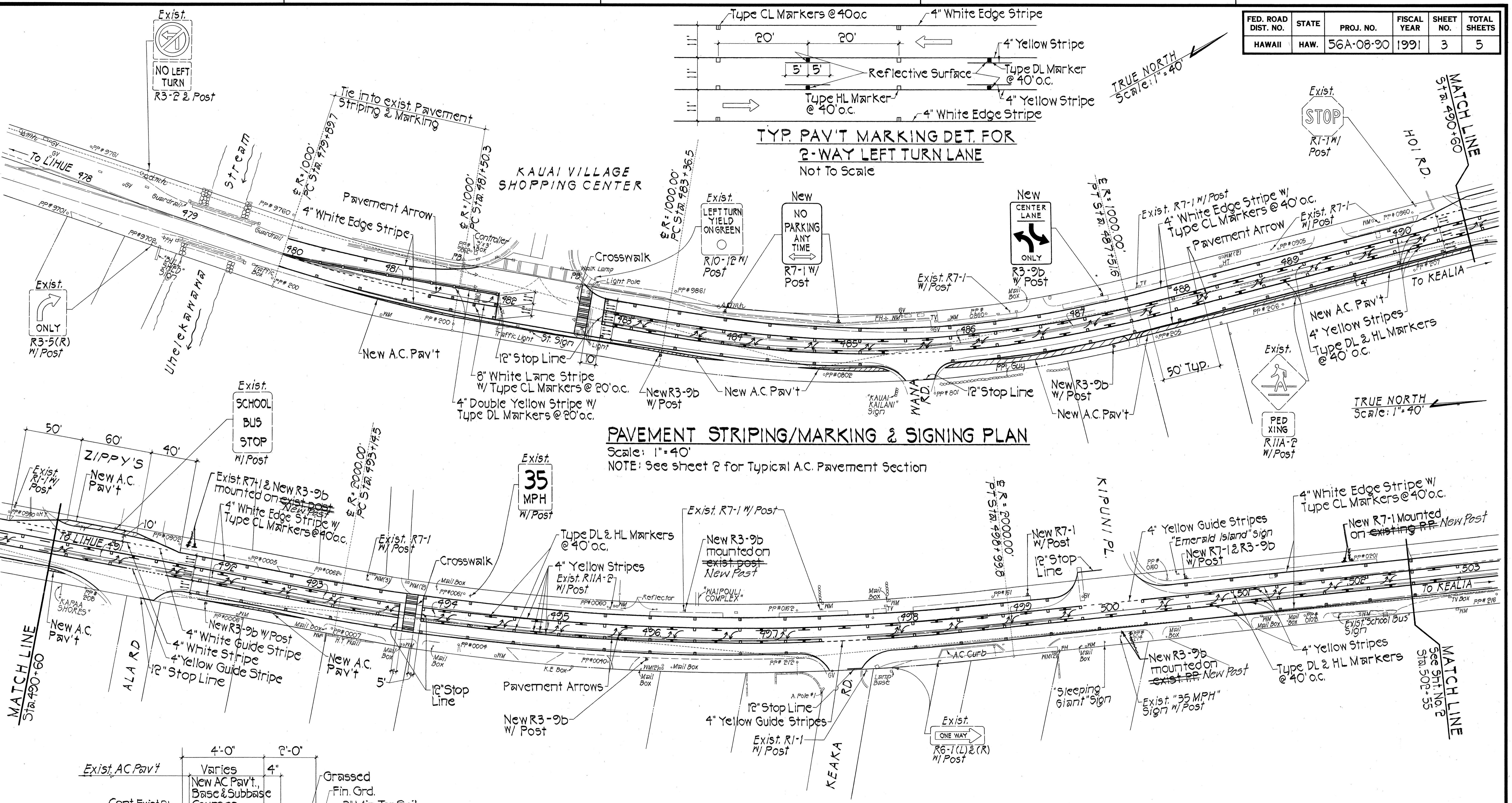
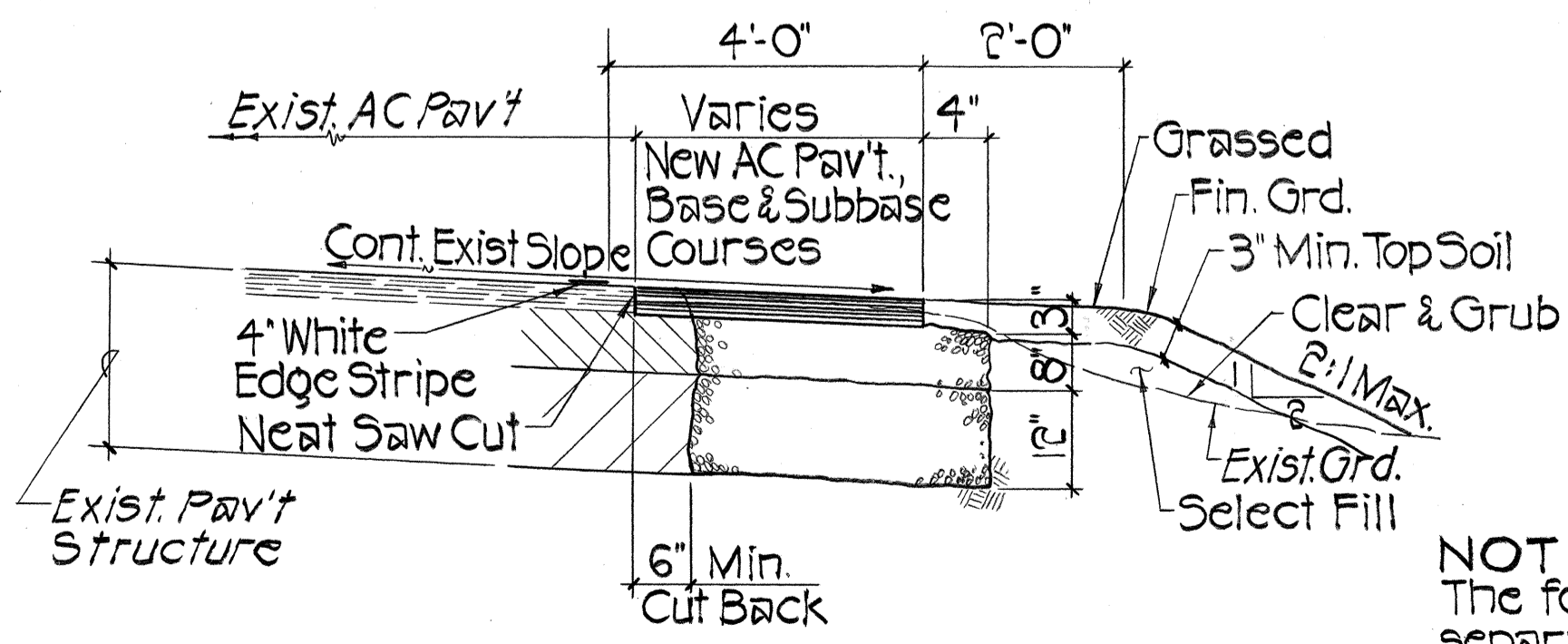


FED. ROAD DIST. NO.	STATE	PROJ. NO.	FISCAL YEAR	SHEET NO.	TOTAL SHEETS
HAWAII	HAW.	56A-08-90	1991	3	5



PAVEMENT STRIPING/MARKING & SIGNING PLAN
 Scale: 1" = 40'
 NOTE: See sheet 2 for Typical A.C. Pavement Section



TYPICAL A.C. PAVEMENT SECTION
 Not to Scale

PAVEMENT STRIPING/MARKING & SIGNING PLAN
 Scale: 1" = 40'

NOTE:
 The following shall not be measured separately for payment but shall be considered incidental to various items in the proposal: saw cut; select fill; top soil; and grassing.

NOTES:
 1. Remove unwanted pavement stripes and markers. Removal work shall not be measured separately for payment but shall be considered incidental to various items of work.
 2. All existing signs to remain unless otherwise noted.



THIS WORK WAS PREPARED BY ME OR UNDER MY SUPERVISION,
 Harold I. Yoshizaki
 REGISTERED PROFESSIONAL ENGINEER
 No. 2091-C
 HAWAII, U.S.A.
 1125 12th Avenue
 Honolulu, Hawaii 96816

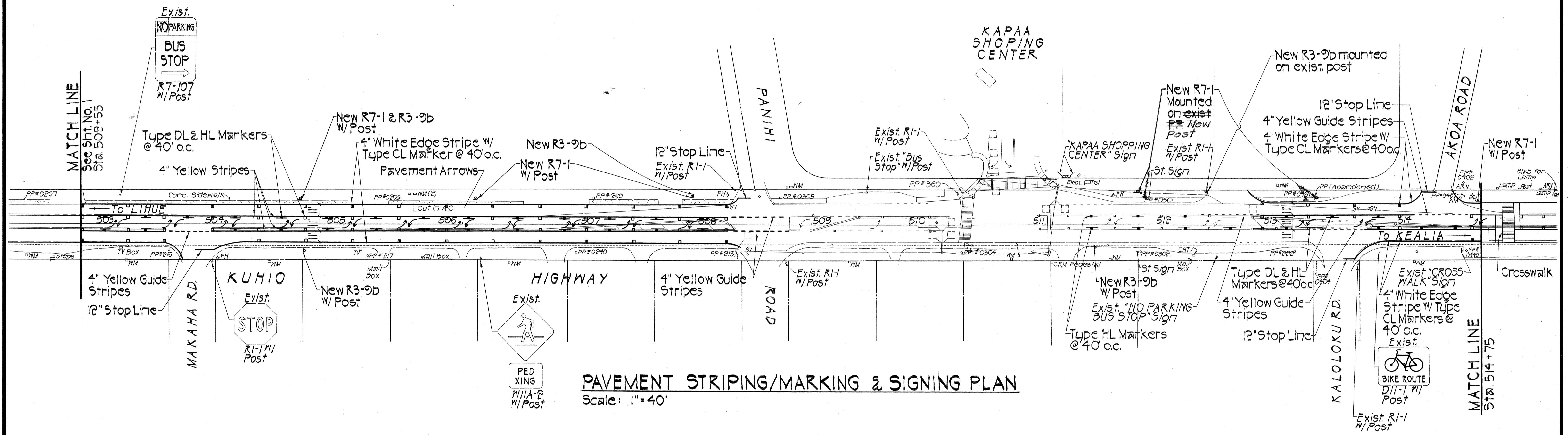
STATE OF HAWAII
 DEPARTMENT OF TRANSPORTATION
 HIGHWAYS DIVISION
PAVEMENT STRIPING/MARKING & SIGNING PLAN
 KUHIO HIGHWAY IMPROVEMENTS
 UHELEKAWAWA BRIDGE TO MOIKEHA BRIDGE
 PROJECT NO. 56A-08-90
 SCALE: AS NOTED DATE: Oct. 1990
 SHEET NO. 1 OF 3 SHEETS

ORIGINAL PLAN
 DRAWN BY
 TRACED BY
 DESIGNED BY
 CHECKED BY
 DATE

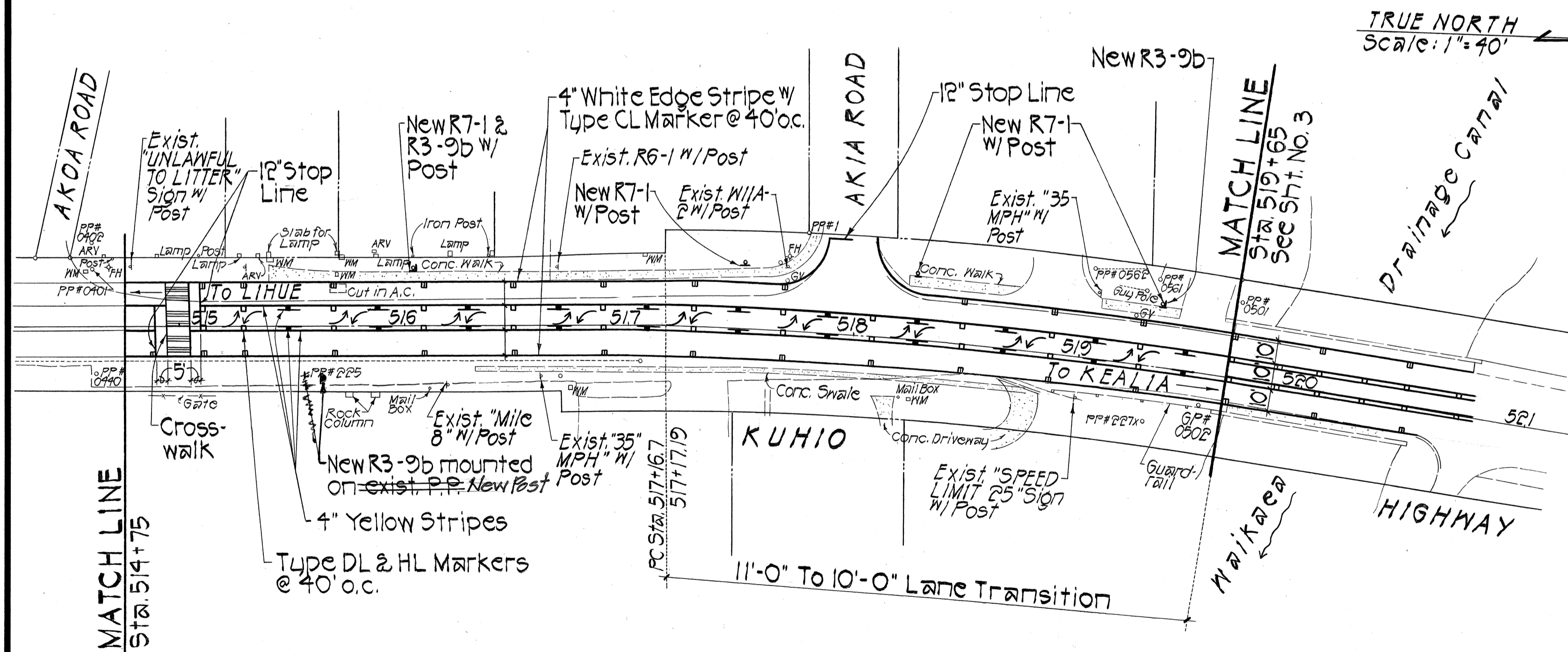
107688

TRUE NORTH
Scale: 1"=40'

FED. ROAD DIST. NO.	STATE	PROJ. NO.	FISCAL YEAR	SHEET NO.	TOTAL SHEETS
HAWAII	HAW.	56A-08-90	1991	4	5



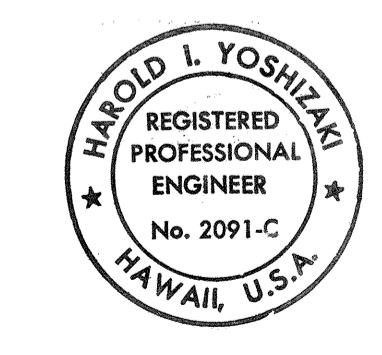
PAVEMENT STRIPING/MARKING & SIGNING PLAN
Scale: 1"=40'



PAVEMENT STRIPING/MARKING & SIGNING PLAN
Scale: 1"=40'

GENERAL NOTES

- All construction work shall be done in accordance with these plans, all applicable sections of the Standard Specifications for Road and Bridge Construction, dated 1985 as amended, of the State Highways Division, Dept. of Transportation and the project's Special Provisions, unless otherwise specified.
- The Contractor shall provide, install and maintain all necessary signs, lights, flares, temporary concrete guardrails, barricades, markers, cones and other protective facilities and shall take all necessary precautions for the protection and for the convenience and safety of public traffic. All such protective facilities and precautions to be taken shall conform with the "Rules and Regulations Governing the Use of Traffic Control Devices at Work Sites on or Adjacent to Public Streets and Highways" adopted by the Highway Safety Coordinator and the U.S. Federal Highway Administration's "Manual on Uniform Traffic Control Devices for Streets and Highways, Part VI - Traffic Controls for Highway Construction and Maintenance Operations" dated 1978 & Revision No 4 dated March 1986.
- Full compensation for all additional materials and labor, not specifically shown or called for which are necessary to complete the construction of the project, shall be considered incidental to the various contract items in the proposal and no additional compensation will be allowed therefor.
- The underground pipes, cables or ductlines known to exist by the Engineer from his search of records are indicated on the Plans. The Contractor shall verify the location and depth of the facilities and exercise proper care in excavating in the area.
- All lanes shall be open to traffic during the morning peak hours from 6:30 a.m. to 8:00 a.m. and during afternoon peak hours from 3:30 p.m. to 6:00 p.m. and during off-work hours.
- All exposed areas shall be sodded or planted immediately after the grading work has been completed.
- The Contractor shall remove all silt and debris resulting from his work and deposited in drainage facilities, roadways and other areas. The costs incurred for any necessary remedial action by the Engineer shall be payable by the Contractor.
- The Contractor, at his own expense, shall keep the project area and surrounding area from dust nuisance. The work shall be in conformance with the Air Pollution Control Standards and Regulations of the State Department of Health.
- The Contractor is reminded of the requirements of Subsection 107.13 Public Convenience and Safety, regarding opening lanes to traffic and the assessment of liquidated damages for non-compliance, as specified under Subsection 108.08 of the Special Provisions.



THIS WORK WAS PREPARED BY ME OR UNDER MY SUPERVISION
 Harold I. Yoshizaki
 SHIMADZUKURO, ENGR & YOSHIKAWA, INC.
 1126 12th Avenue
 Honolulu, Hawaii 96816

STATE OF HAWAII
 DEPARTMENT OF TRANSPORTATION
 HIGHWAYS DIVISION

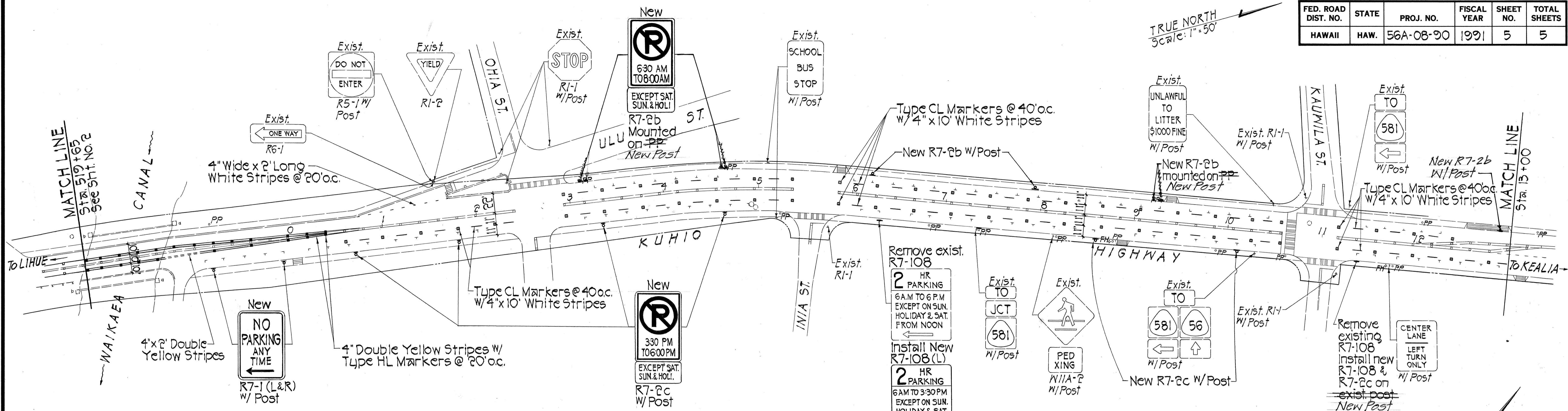
PAVEMENT STRIPING/MARKING & SIGNING PLAN

KUHIO HIGHWAY IMPROVEMENTS
 UHELEKAWAWA BRIDGE TO MOIKEHA BRIDGE
 PROJECT NO. 56A-08-90

SCALE: AS NOTED DATE: Oct. 1990
 SHEET NO. 4 OF 3 SHEETS

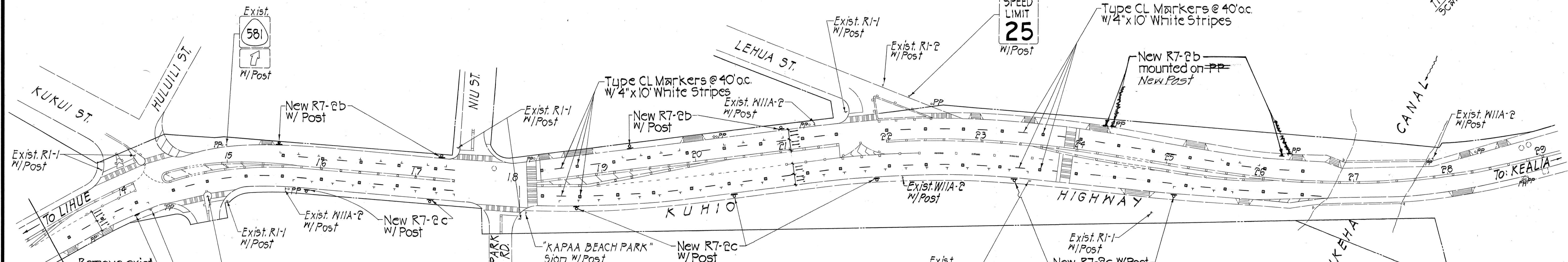
DATE	
SURVEY PLOTTED BY	
DRAWN BY	
DESIGNED BY	
CHECKED BY	
NO.	

FED. ROAD DIST. NO.	STATE	PROJ. NO.	FISCAL YEAR	SHEET NO.	TOTAL SHEETS
HAWAII	HAW.	56A-08-90	1991	5	5



PAVEMENT STRIPING/MARKING & SIGNING PLAN

Scale: 1" = 50'



PAVEMENT STRIPING/MARKING & SIGNING PLAN

Scale: 1" = 40'

LEGEND

- 4" White Edge Stripe W/ Type CL Raised Pav't Markers at 40'oc. (Tape, Type II or Thermoplastic Extrusion).
- 4" White Stripe W/ Type CL Raised Pav't Markers at 40'oc. (Tape, Type I or Thermoplastic Extrusion).
- 4" White or Yellow Guide Stripe (Thermoplastic Extrusion).
- 4" Double Yellow Solid Stripe W/ Type DL or HL Pav't Markers at 20'oc. (Tape, Type II or Thermoplastic Extrusion).
- 4" Yellow Solid & 10' Long Stripe W/ Type DL or HL Markers spaced at 20'oc. (Tape, Type I or Thermoplastic Extrusion).
- 6" White Lane Stripe W/ Type CL Markers at 20'oc. (Tape, Type I or Thermoplastic Extrusion).
- 12" Wide Stop Line (Thermoplastic Extrusion).
- Crosswalk (Thermoplastic Extrusion).
- Pavement Arrow (Tape, Type I or Thermoplastic Extrusion).



THIS WORK WAS PREPARED BY ME OR UNDER MY SUPERVISION.
Harold I. Yoshizaki
 SHIMABUKURO, ENDO & YOSHIZAKI, INC.
 1125 12th Avenue
 Honolulu, Hawaii 96816

STATE OF HAWAII
 DEPARTMENT OF TRANSPORTATION
 HIGHWAYS DIVISION
PAVEMENT STRIPING/MARKING & SIGNING PLAN
 KUHIO HIGHWAY IMPROVEMENTS
 UHELEKAWAWA BRIDGE TO MOIKEHA BRIDGE
 PROJECT NO. 56A-08-90
 SCALE: AS NOTED DATE: Oct. 1990
 SHEET No. 3 OF 3 SHEETS