

ORIGINAL PLAN	SURVEY PLOTTED BY	DATE
NOTE BOOK	DRAWN BY	
No.	DESIGNED BY	
	QUANTITIES BY	
	CHECKED BY	

LEGEND

- 12" RYG STANDARD TRAFFIC SIGNAL HEAD
- ↗ STANDARD TRAFFIC AND PEDESTRIAN SIGNAL HEADS MOUNTED ON TYPE I SIGNAL STANDARD, HEIGHT = 10'
- 12" RYG 4-SECTION DUAL INDICATION TRAFFIC SIGNAL HEAD
- TRAFFIC SIGNAL HEADS MOUNTED ON TYPE II SIGNAL STANDARD, ARM SPREAD SHOWN 25' AND DISTANCE BETWEEN SIGNAL HEADS SHOWN IS 12'
- ☒ TYPE "A" PULLBOX
- TYPE "B" PULLBOX
- M TYPE "B" PULLBOX WITH MODIFIED COVER
- LOOP DETECTOR, SERIES-PARALLEL CONNECTED
- LOOP DETECTOR, SERIES CONNECTED
- w WATERLINE (EXISTING)
- s SEWERLINE
- aw ABANDONED WATERLINE
- tp TELEPHONE POLE
- ep ELECTRIC POLE
- F.H. FIRE HYDRANT
- L.P. LIGHT POLE
- tv TELEVISION CABLES

CONSTRUCTION NOTES

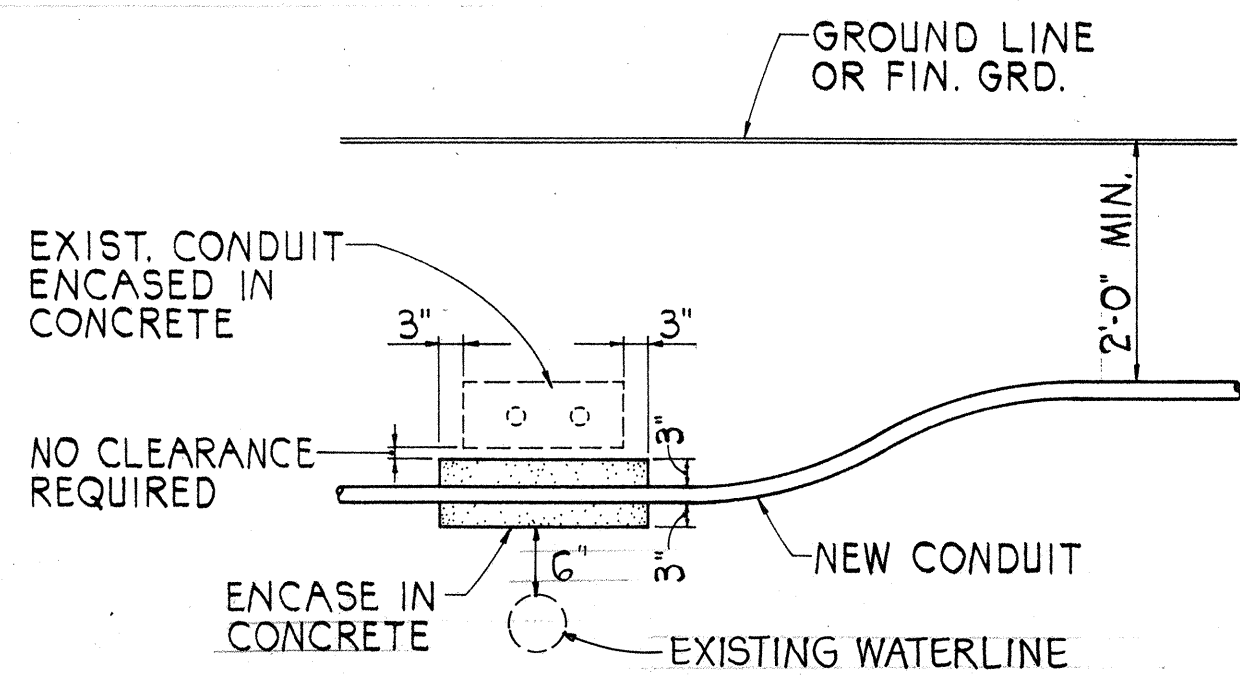
- LOCATIONS OF EXISTING UNDERGROUND STRUCTURES AND UTILITIES SUCH AS PIPELINES, CONDUITS, CABLES, ETC., SHOWN ON PLANS ARE APPROXIMATE ONLY. IT IS NOT THE INTENT OF THESE PLANS TO SHOW THE EXACT LOCATION OF ALL UNDERGROUND UTILITIES AND STRUCTURES. IT IS THE RESPONSIBILITY OF THE CONTRACTOR TO VERIFY THE LOCATIONS OF ALL EXISTING UTILITIES WITH THE RESPECTIVE OWNERS. EXISTING UTILITIES DAMAGED BY THE CONTRACTOR SHALL BE REPAIRED BY THE CONTRACTOR AT HIS OWN COST.
- THE LOCATIONS OF THE TRAFFIC SIGNAL STANDARDS, TRAFFIC SIGNAL STANDARDS WITH MAST-ARM, PEDESTRIAN PUSH BUTTONS, TRAFFIC CONTROLLER CABINETS, PULLBOXES, CONDUITS AND LOOP-DETECTORS SHALL BE STAKED OUT IN THE FIELD BY THE CONTRACTOR AND APPROVAL OF THE LOCATIONS SHALL BE OBTAINED FROM THE ENGINEER PRIOR TO CONSTRUCTION AND INSTALLATION.
- ALL TRAFFIC SIGNAL WORK SHALL CONFORM TO THE REQUIREMENTS OF THE "MANUAL ON UNIFORM TRAFFIC CONTROL DEVICES FOR STREETS AND HIGHWAYS", FEDERAL HIGHWAY ADMINISTRATION (1984) AND AMENDMENTS.
- LOCATIONS OF PAVEMENT STRIPING, MARKERS, AND MARKINGS (PAVEMENT ARROWS, STOP LINES, CROSSWALK, ETC.) SHOWN ON THE PLANS SHALL BE VERIFIED WITH THE ENGINEER PRIOR TO THE INSTALLATION OF THE TRAFFIC SIGNAL SYSTEM.
- MAINTENANCE OF TRAFFIC THROUGH THE CONSTRUCTION AREA SHALL BE IN ACCORDANCE WITH PART VI OF THE "MANUAL ON UNIFORM TRAFFIC CONTROL DEVICES FOR STREETS AND HIGHWAYS", FEDERAL HIGHWAY ADMINISTRATION (1984) AND AS SPECIFIED IN THE SPECIAL PROVISIONS. THE CONTRACTOR SHALL FURNISH AND MAINTAIN ADEQUATE BARRICADES, BLINKERS, CONSTRUCTION SIGNS, ETC., FOR THE SAFETY OF THE MOTORING PUBLIC.
- REMOVAL OF EXISTING SIGNS SHALL ALSO INCLUDE THE REMOVAL OF POSTS AND FOUNDATIONS UNLESS OTHERWISE NOTED. ALL SIGN MATERIALS REMOVED BY THE CONTRACTOR SHALL BECOME THE PROPERTY OF THE CONTRACTOR. COSTS FOR REMOVAL AND TEMPORARY INSTALLATION OF SIGNS, POSTS, AND FOUNDATIONS SHALL BE CONSIDERED INCIDENTAL TO OTHER ITEMS OF WORK.

TRAFFIC SIGNAL NOTES

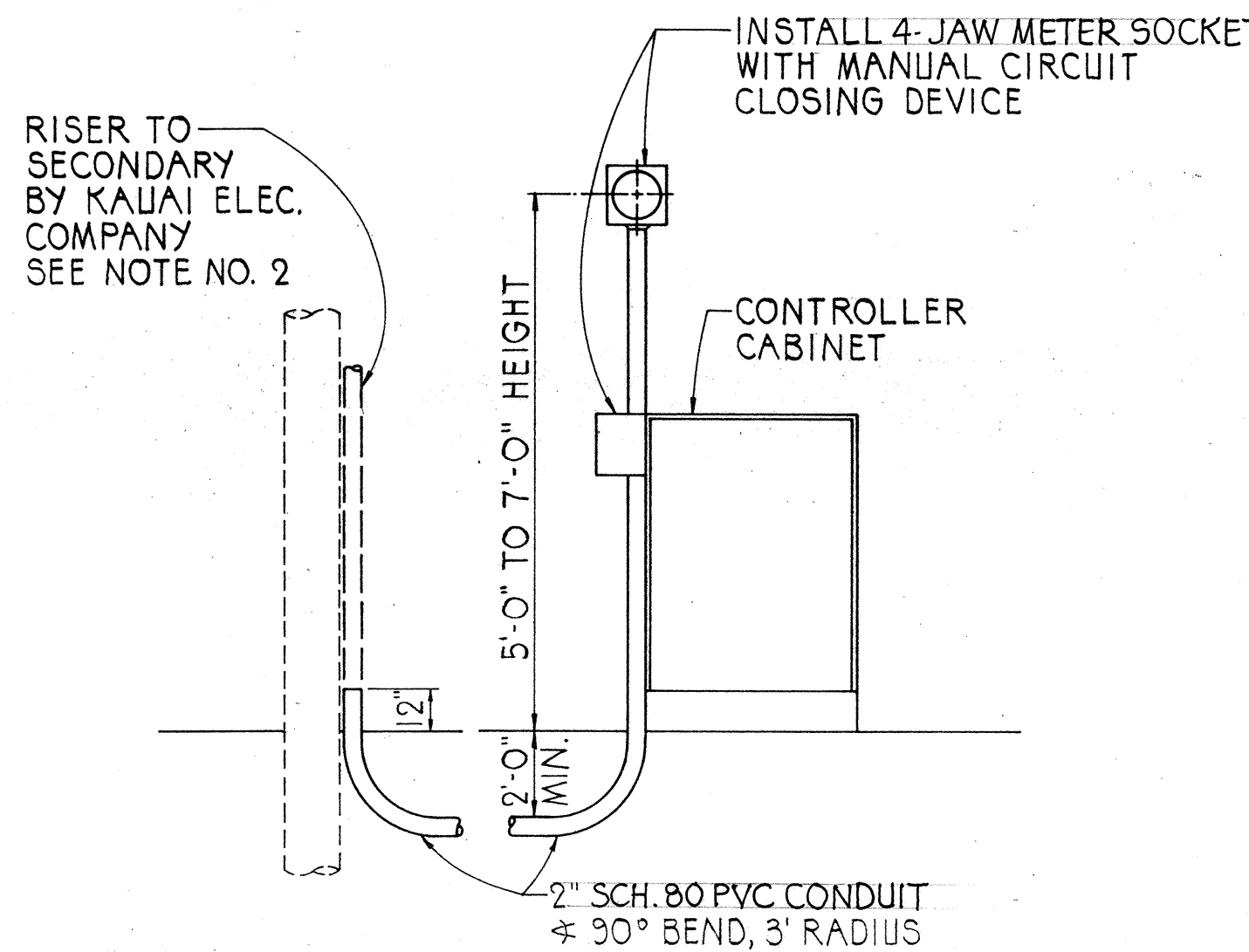
- ALL TRAFFIC SIGNAL CONTROLLER EQUIPMENT SHALL BE COMPLETELY WIRED IN THE CABINET AND SHALL CONTROL THE TRAFFIC SIGNALS AS CALLED FOR IN THE PLANS.
- SIGNAL INDICATIONS DURING CLEARANCE INTERVAL:
 - IF A SIGNAL IS G OR 6- AND WILL REMAIN G OR 6- DURING THE NEXT PHASE, IT SHALL BE G OR 6- DURING THE CLEARANCE INTERVAL.
 - IF A SIGNAL IS G OR 6- AND WILL BECOME R OR EXTINGUISHED DURING THE NEXT PHASE, IT SHALL BE Y OR 4- DURING THE CLEARANCE INTERVAL.
 - IF A SIGNAL IS R AND WILL REMAIN R OR BECOMES G DURING THE NEXT PHASE, IT SHALL REMAIN R DURING THE CLEARANCE INTERVAL.
- THE CONTROLLER FURNISHED SHALL BE A 4-8 PHASE CONTROLLER. THE CONTROLLER SHALL BE MODULAR BY PHASE; KEYBOARD ENTRY WILL NOT BE ACCEPTABLE. A COORDINATION UNIT IS NOT REQUIRED FOR THIS PROJECT. HOWEVER, THE CABINET SHALL BE WIRED FOR FUTURE INSTALLATION OF A COORDINATION UNIT OF THE SAME MANUFACTURER AS THE CONTROLLER UNIT. AN EXTERNAL TIMER SHALL BE WIRED IN THE CABINET FOR USE WITH MAX TWO TIMING INTERVAL.
- THE LOOP AMPLIFIER UNITS FURNISHED FOR THIS PROJECT SHALL BE CAPABLE OF OPERATING THE LOOP DETECTOR CONFIGURATIONS SHOWN ON THE PLANS.
- MINIMUM CONTROLLER CABINET SIZE SHALL BE 59" HIGH, 38" WIDE AND 24" DEEP.
- CONTRACTOR SHALL FURNISH A 50-AMPERE CIRCUIT BREAKER.
- A SOLID #8 BARE COPPER WIRE SHALL BE PULLED WITH THE TRAFFIC CONTROL CABLE FOR EQUIPMENT GROUND. COST SHALL BE INCIDENTAL TO THE INSTALLATION OF THE CONTROL CABLE.

NOTE: PROVIDE CONCRETE JACKET AT ALL WATERLINE CROSSINGS WITH 6" CLEARANCE BETWEEN CONCRETE JACKET AND EXISTING WATERLINE.

FED. ROAD DIST. NO.	STATE	FED. AID PROJ. NO.	FISCAL YEAR	SHEET NO.	TOTAL SHEETS
HAWAII	HAW.	56A-01-85	1986	4	25



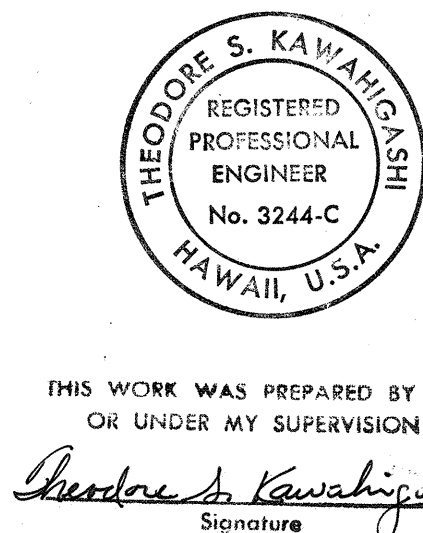
CONDUIT BY-PASS DETAIL
NOT TO SCALE



NOTES:

- KAUAI ELECTRIC CO. WILL FURNISH AND INSTALL CABLE BETWEEN SECONDARY AND METER SOCKET.
- CONTRACTOR SHALL MAKE ALL ELECTRICAL CONNECTIONS TO CONTROLLER, PROVIDE BREAKER AND GROUND, AND FIRST 10', SCHEDULE 80 PVC OF UNDERGROUND RISER.
- CONTRACTOR SHALL PROVIDE KAUAI ELECTRIC CO. ONE WEEK ADVANCE NOTICE FOR ANY WORK BY KAUAI ELECTRIC COMPANY.

ELECTRICAL SERVICE DETAIL
NOT TO SCALE



STATE OF HAWAII
DEPARTMENT OF TRANSPORTATION
HIGHWAYS DIVISION

TRAFFIC SIGNAL DETAILS

KUHIO HWY., EHA STREET & WILCOX HOSP. INTERSECTION IMPROVEMENTS
PROJECT NO. 56A-01-85

Scale: As Noted Date: _____

SHEET NO. OF SHEETS