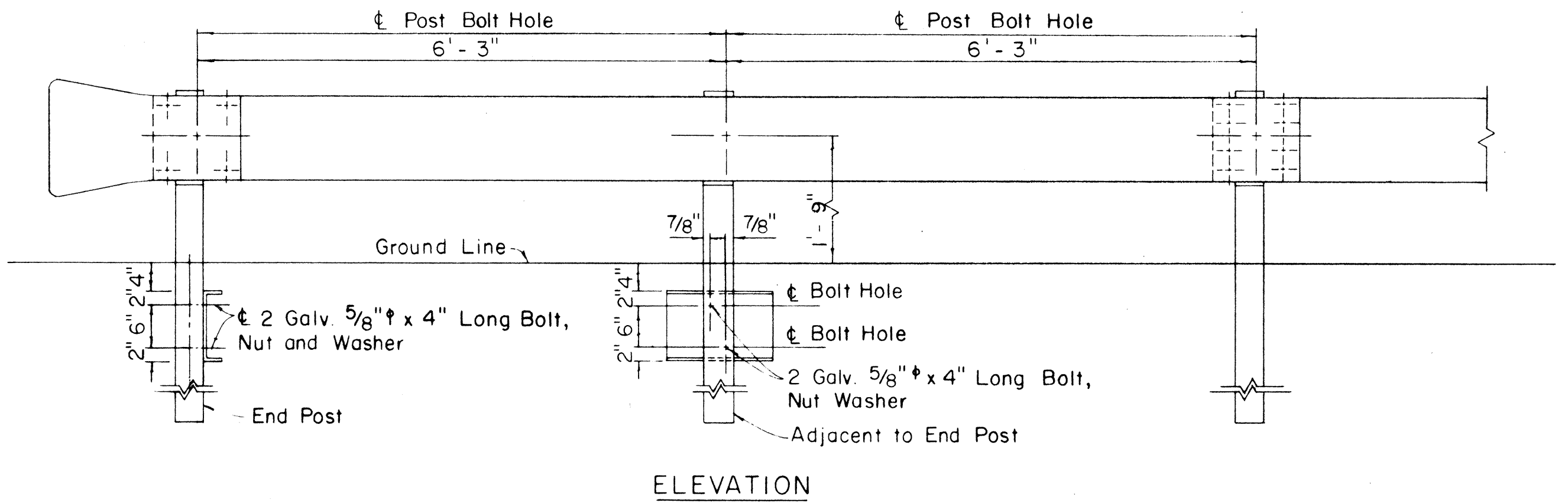
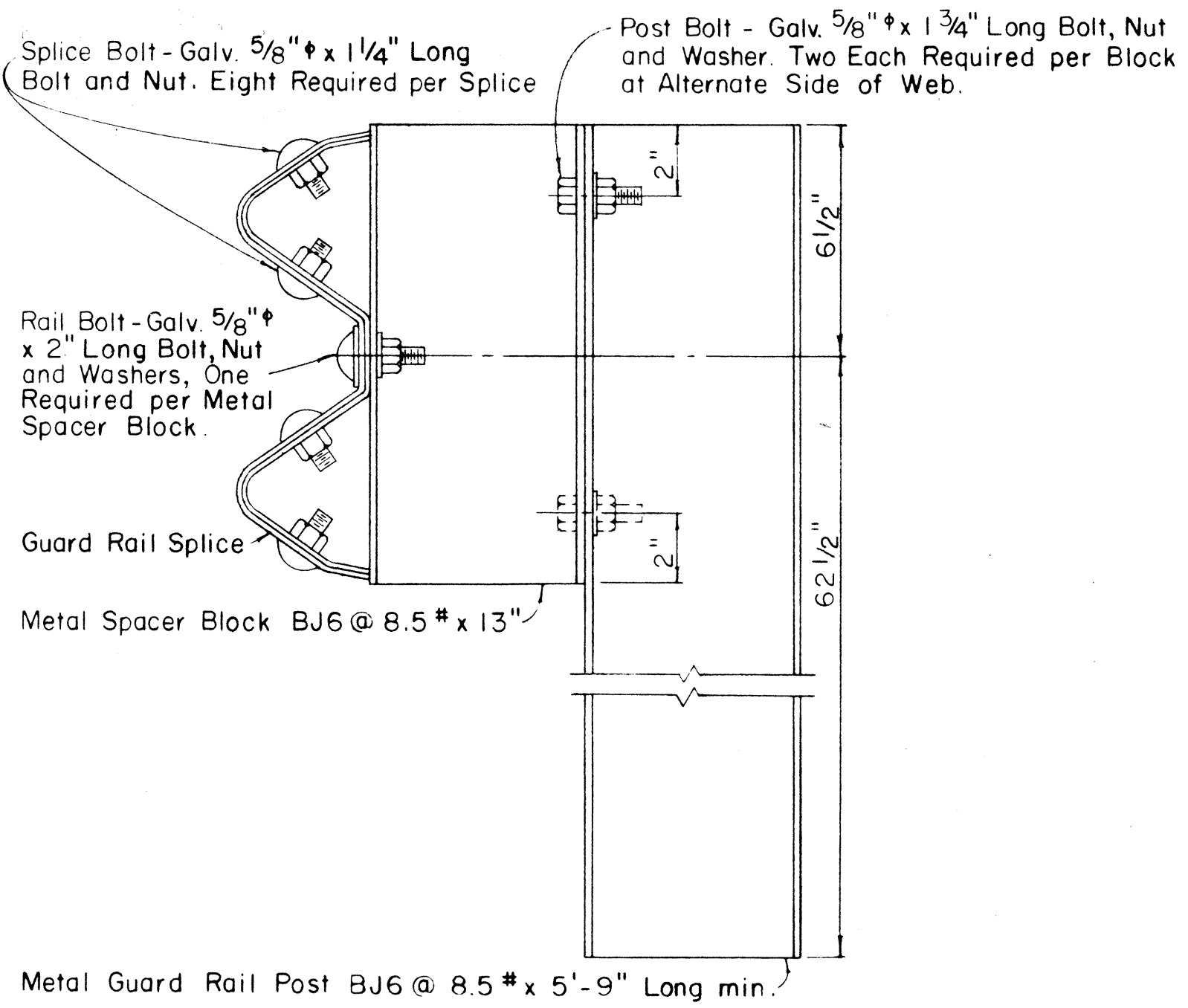
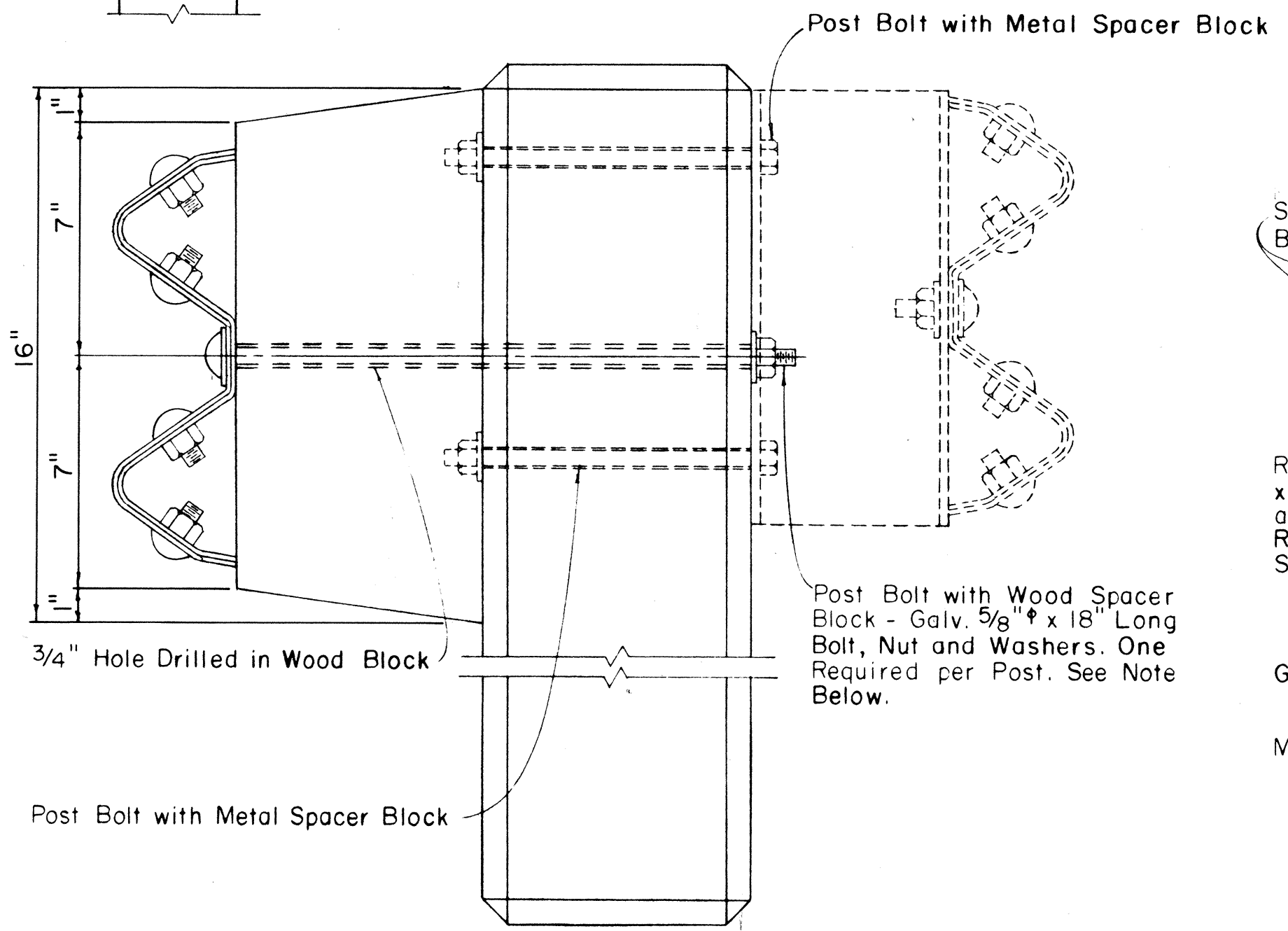
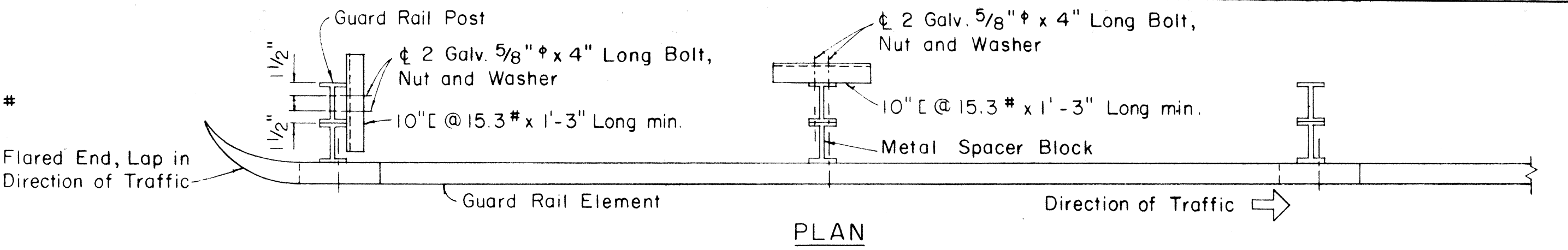
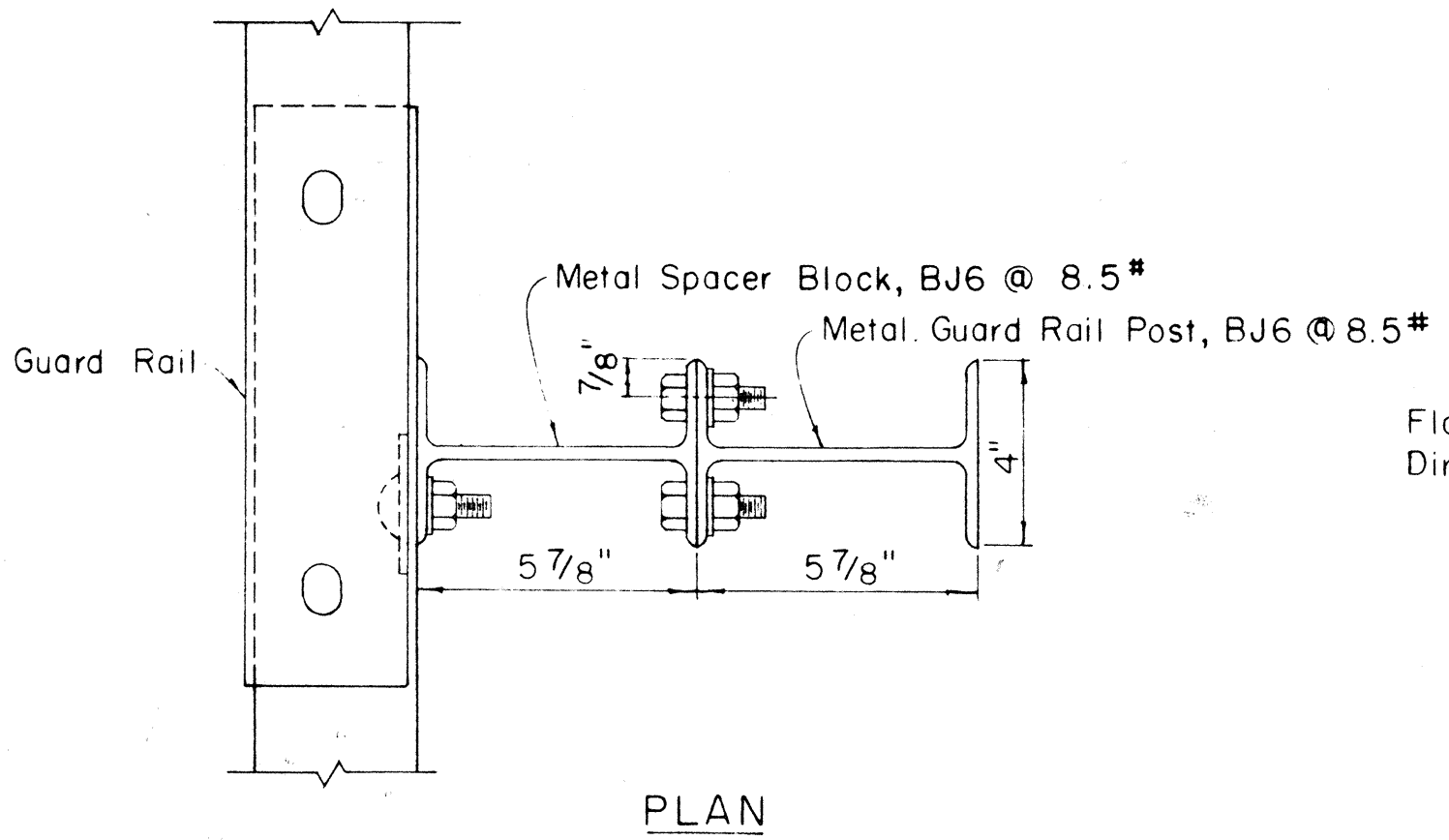
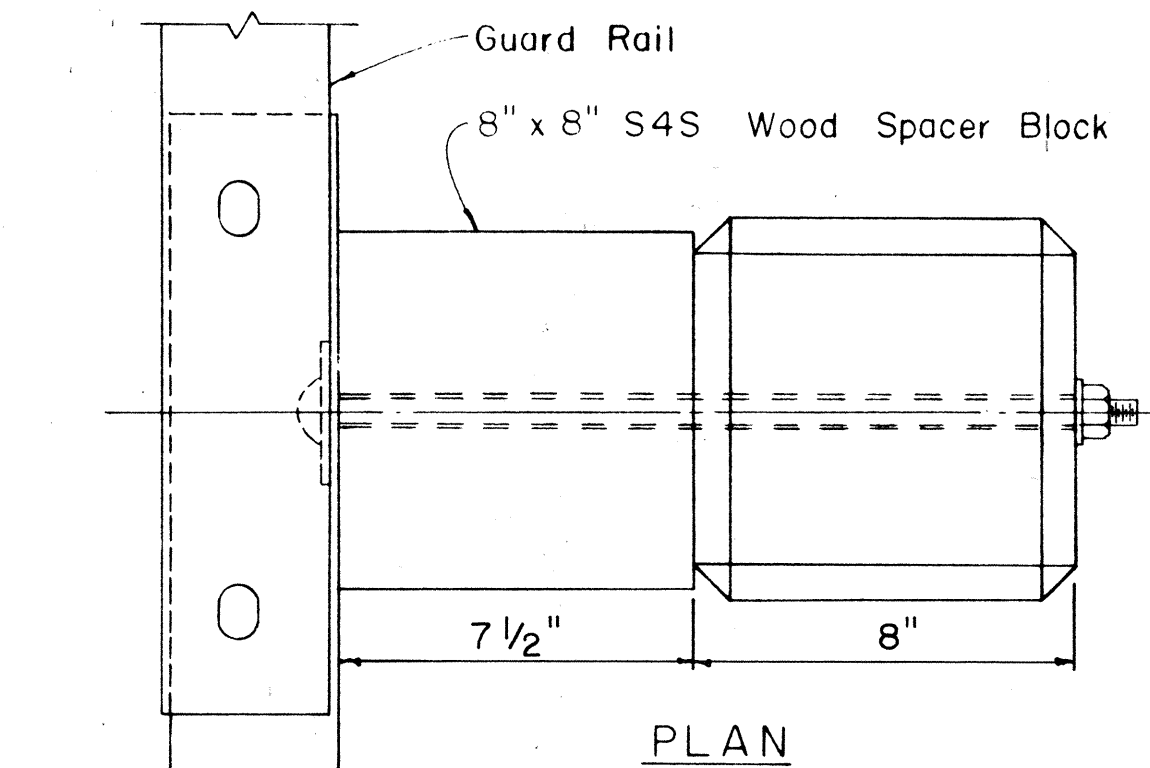
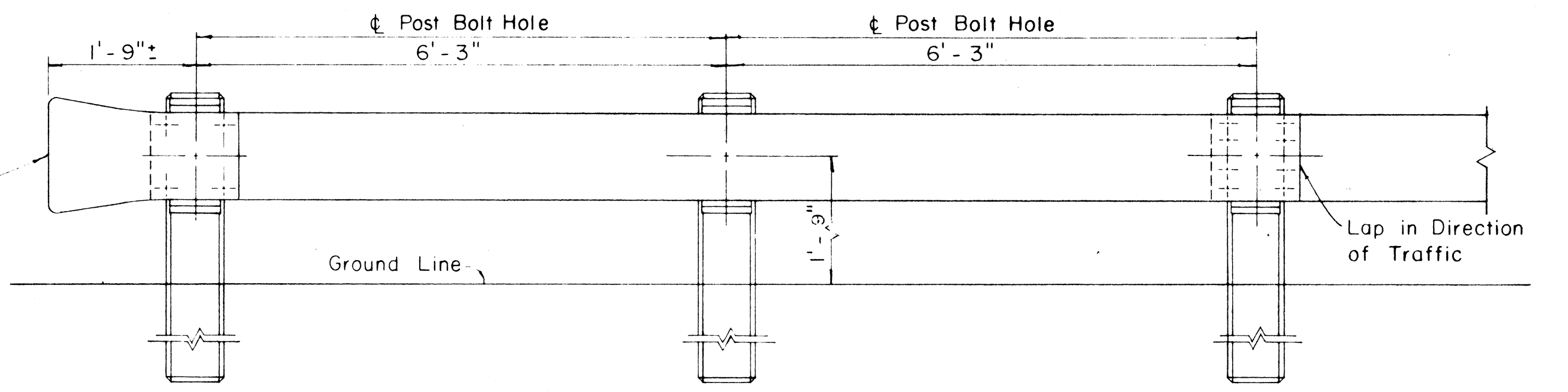
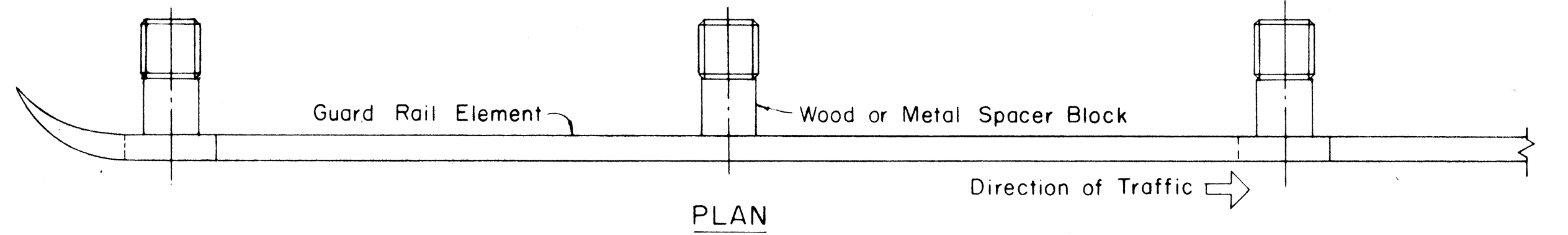


FED. ROAD DIST. NO.	STATE	FED. AID PROJ. NO.	FISCAL YEAR	SHEET NO.	TOTAL SHEETS
HAWAII	HAW.	F-056-1(13)	1968	7	10



METAL GUARD RAIL ON METAL POST WITH METAL SPACER BLOCK

Scale: 3/4" = 1' - 0"



METAL GUARD RAIL ON CONCRETE POST WITH WOOD OR METAL SPACER BLOCK

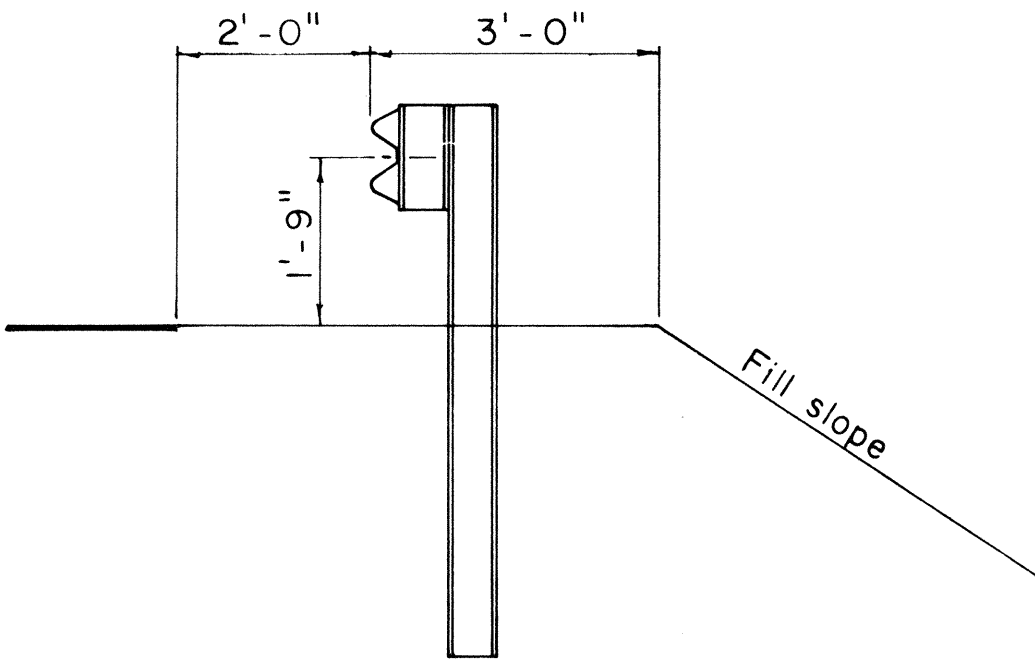
Scale: 3/4" = 1' - 0"

SINGLE METAL GUARD RAIL ON PRECAST CONCRETE POST WITH WOOD OR METAL SPACER BLOCK

Scale: 3" = 1' - 0"

SINGLE METAL GUARD RAIL ON METAL POST WITH METAL SPACER BLOCK

Scale: 3" = 1' - 0"



TYPICAL GUARD RAIL DETAIL

Scale: 1/2" = 1' - 0"

REVISED: October 27, 1967
REVISED: August 10, 1967

STATE OF HAWAII
DEPARTMENT OF TRANSPORTATION
HIGHWAYS DIVISION

STANDARD DETAILS

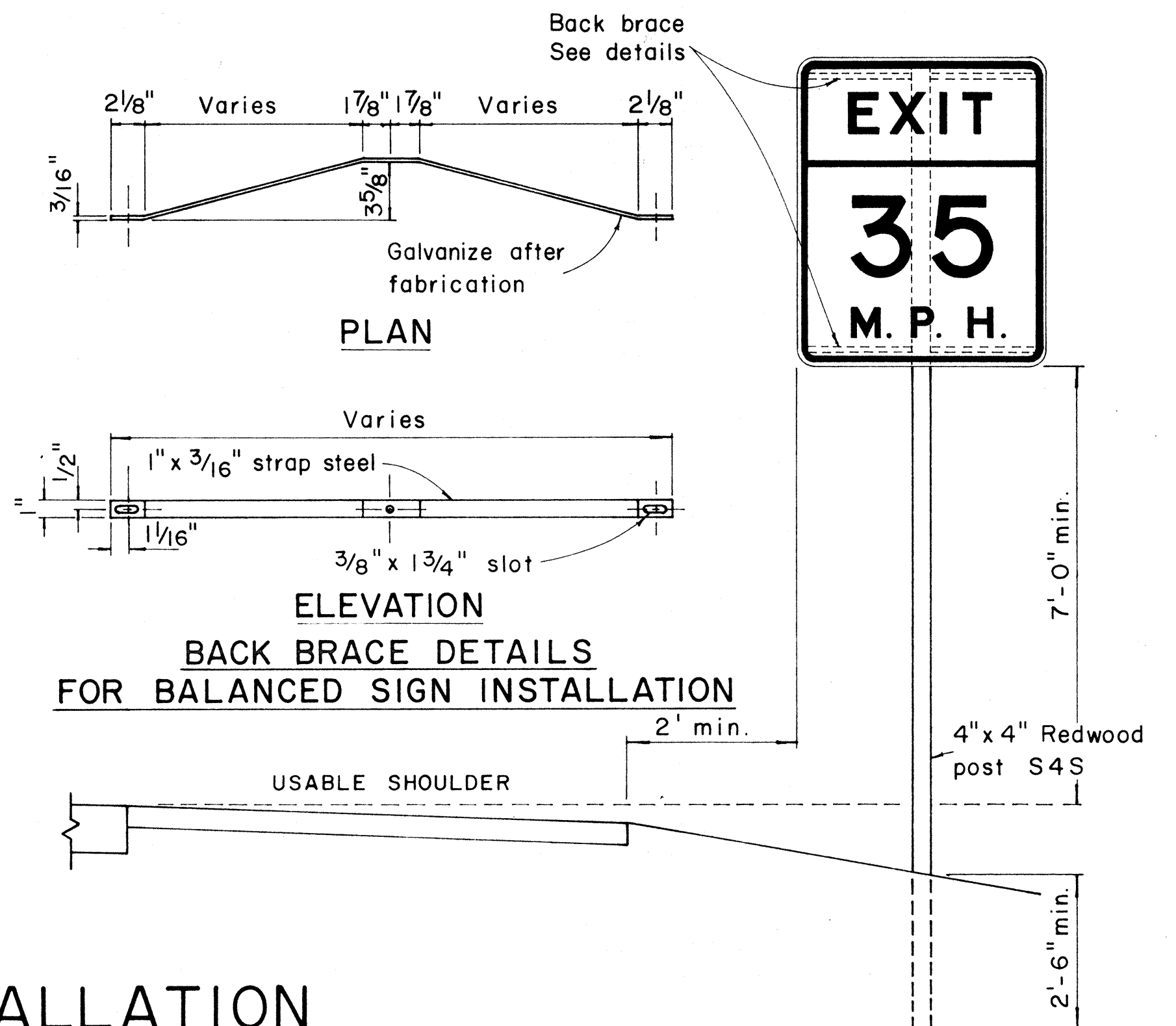
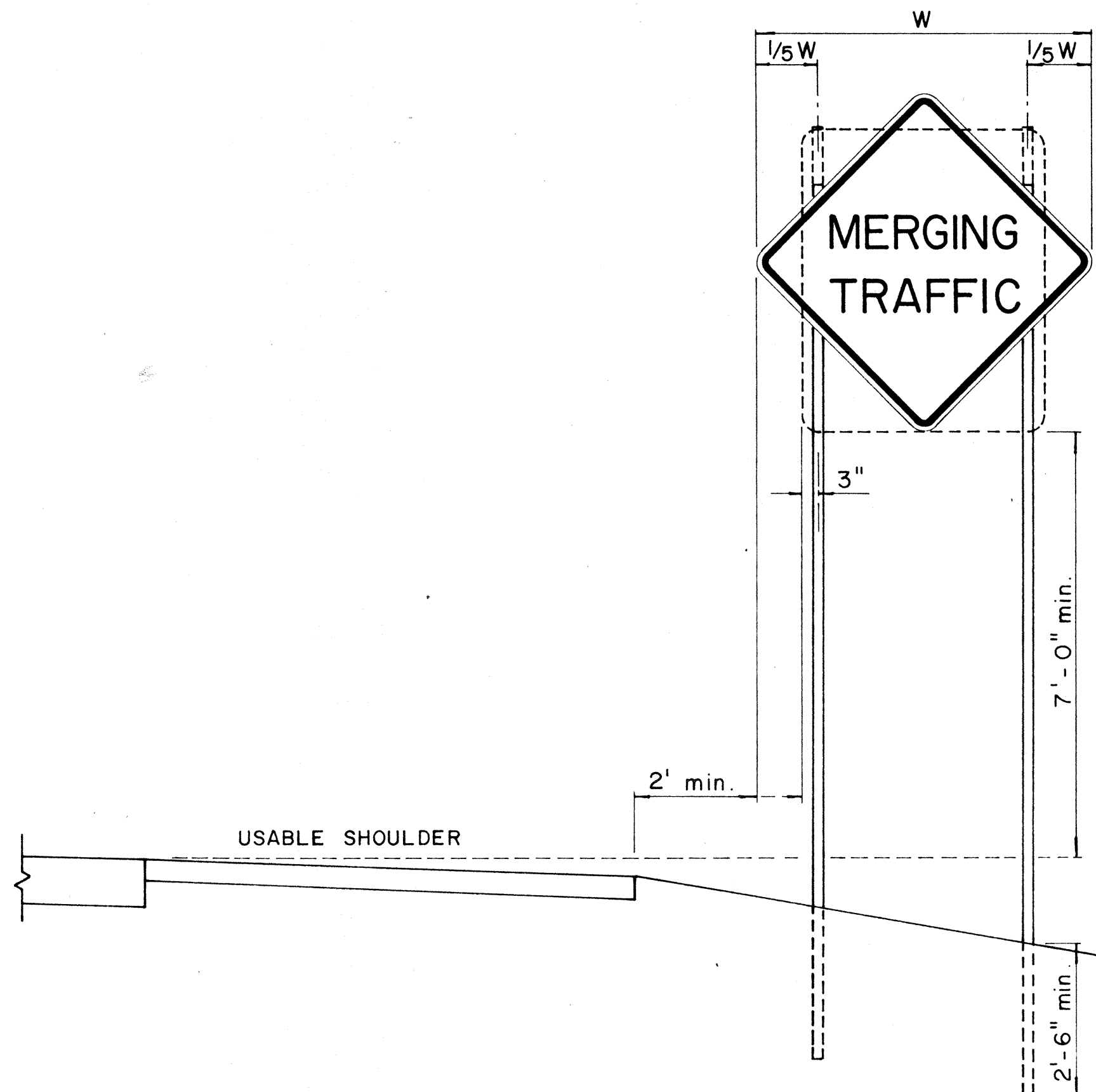
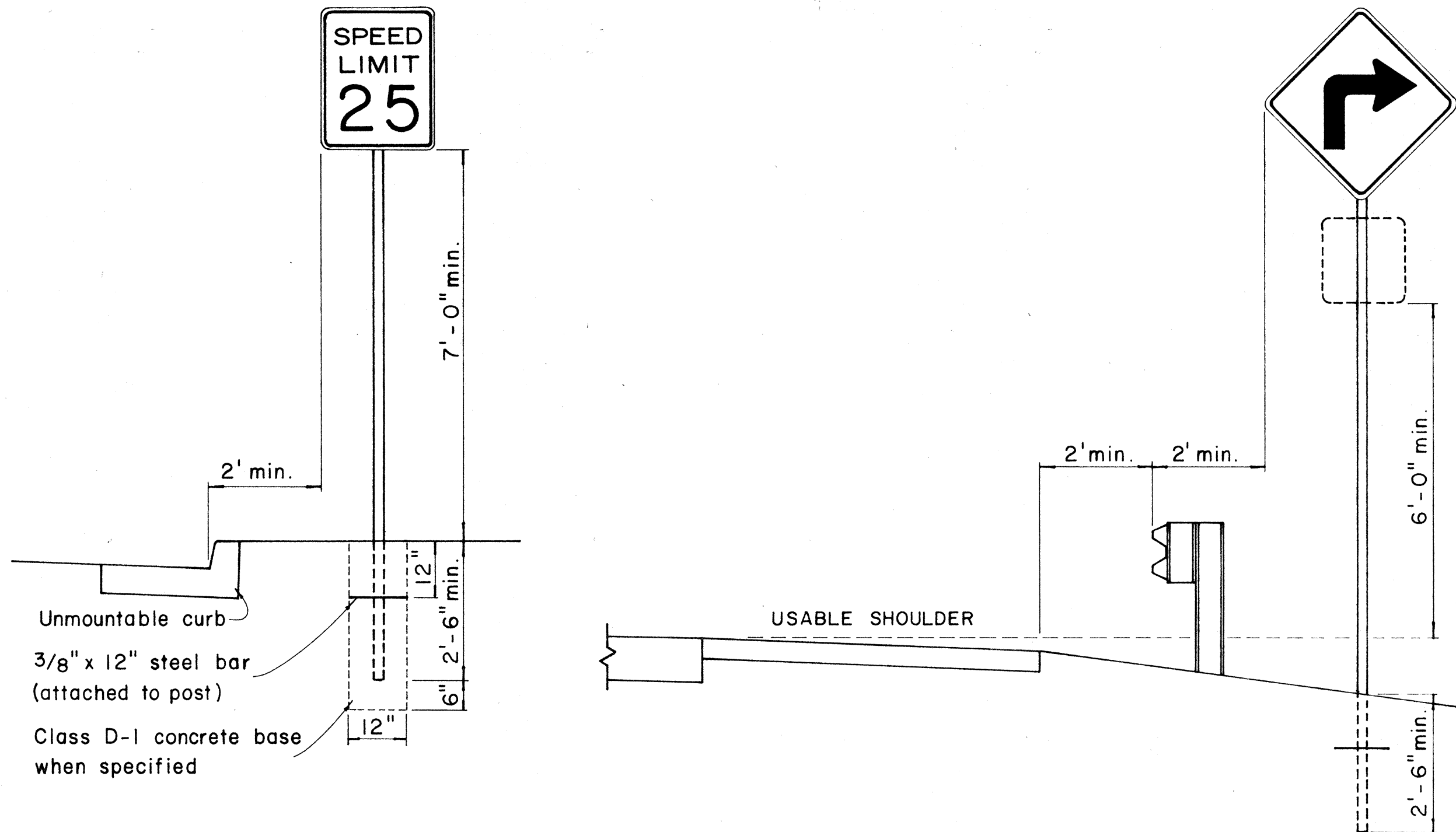
METAL GUARD RAIL

Scale as noted

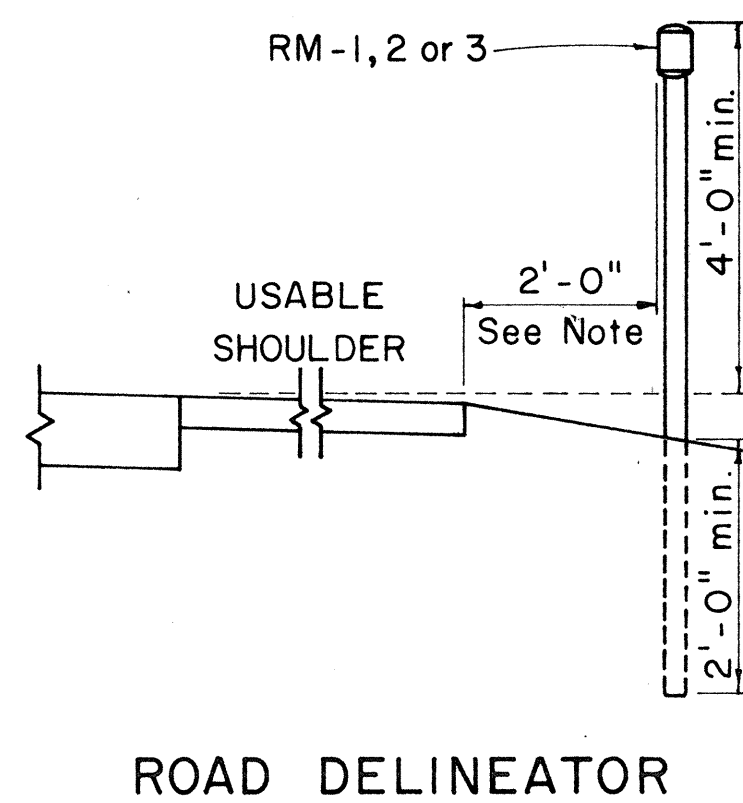
SHEET No. 2 OF 5 SHEETS

DATE	_____
SURVEY PLOTTED BY	_____
PLAN	_____
DRAWN BY	_____
DESIGNED BY	_____
NOTES BOOK	_____
CHECKED BY	_____
NO.	_____

FED. ROAD DIST. NO.	STATE	FED. AID PROJ. NO.	FISCAL YEAR	SHEET NO.	TOTAL SHEETS
HAWAII	HAW.	F-056-1(13)	1968	8	10

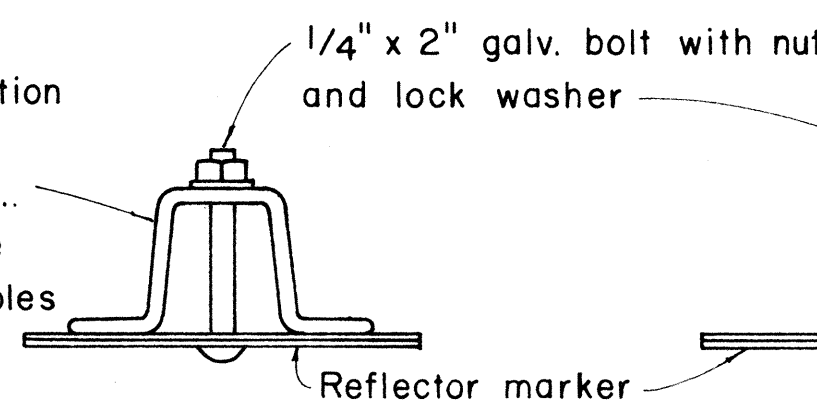


HEIGHT AND LATERAL LOCATION OF SIGNS - TYPICAL INSTALLATION



Galv. flanged channel
1/8" x 3/16" rolled section
post with a minimum
weight of 2 lbs. per ft.
Upper 2 ft. shall have
a single row of 3/8" holes
centered in the web at
1" o.c.

TYPICAL SECTION OF ROAD DELINEATOR



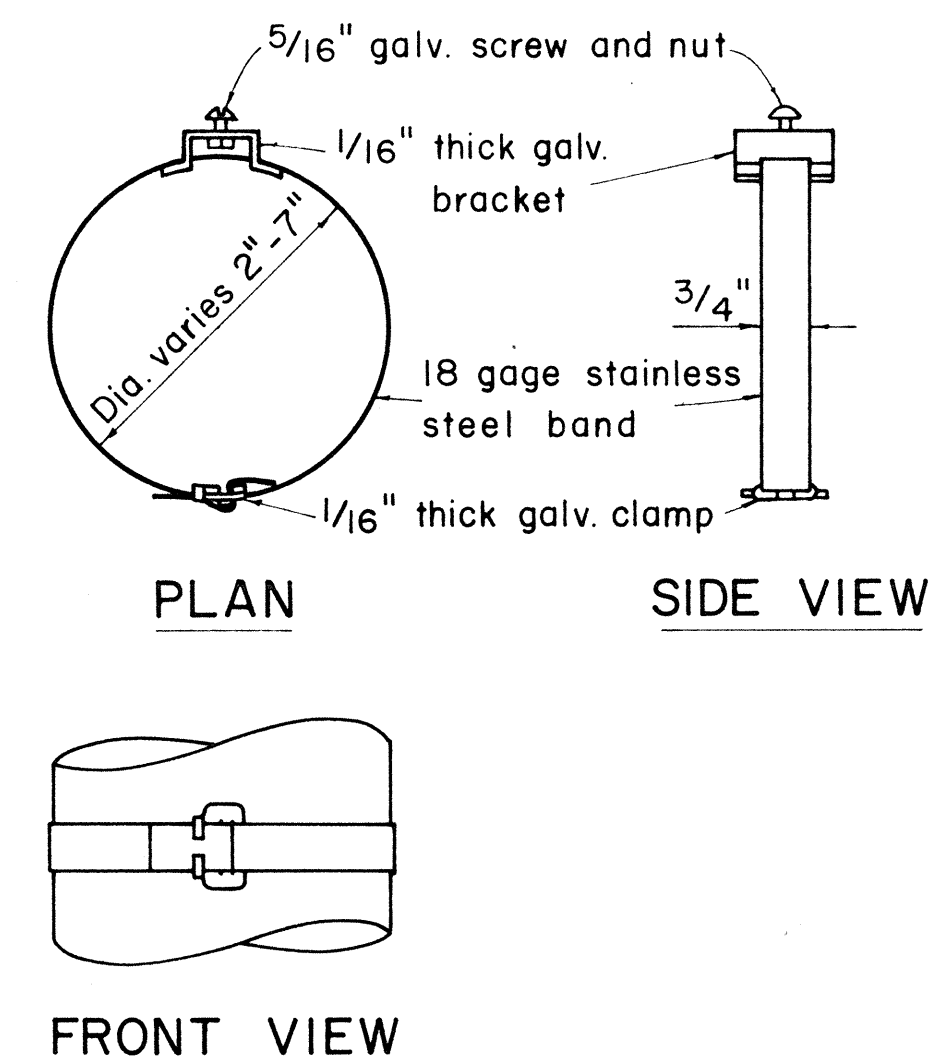
Galv. 1 1/2" x 1 1/2" square
tube post with a minimum
weight of 1.7 lbs. per ft.

1/4" x 1/2" galv.
bolt with nut
and lock washer

1'-5" x 6" x 0.063" anodized
aluminum plate with 3/8"
holes drilled as shown

Galvanized post
Finished grade

TYPICAL DETAIL
HORIZONTAL REFLECTOR MARKER
RM-3H

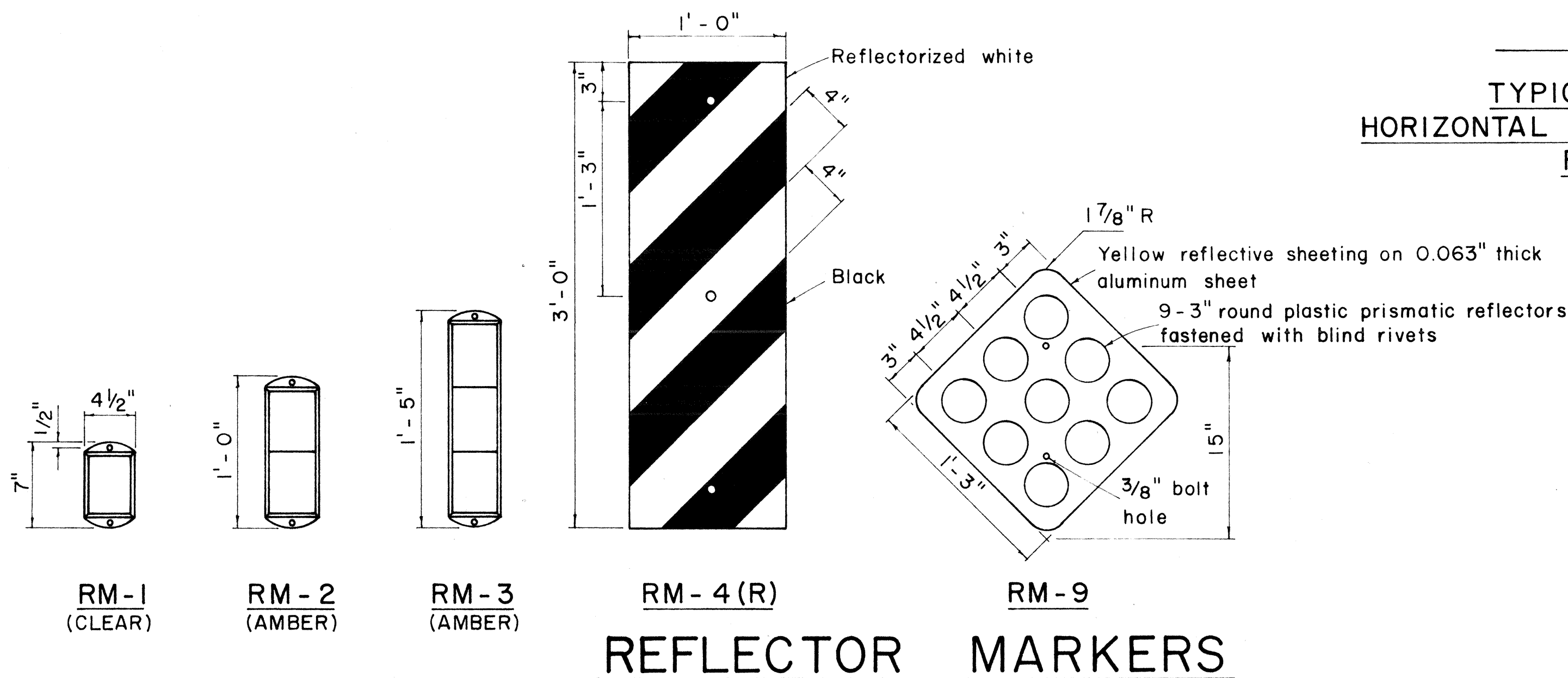


TYPICAL BAND BRACKET FOR
MOUNTING TRAFFIC SIGNS

GENERAL NOTES:

- Sign posts shall be 2" galv. standard pipe or 2" x 2" galv. sq. tube post.
- Signs 48" and wider or larger than 10 sq. ft. in area shall be mounted on two 2" galv. standard pipe or two 2" x 2" galv. sq. tube post or 4" x 4" redwood post S4S.
- Signs shall be attached to post with 5/16" galv. bolts with nuts and 7/8" x 0.06 stainless steel washers with neoprene rubber gasket.
- Sign posts shall extend 3 1/2" above sign where required for City and County street name signs.
- Reflector markers RM-1, 2, 3 shall be glass sphere reflector markers with 4" x 5" reflector units (as shown) or plastic prismatic reflector markers with 3" diameter reflector units.
- Clearance markers (RM-3, RM-4) shall be installed with the edge of the marker in line with the inner edge of the obstruction.
- (R) or (L) indicates right or left and shall be as shown on the plans.

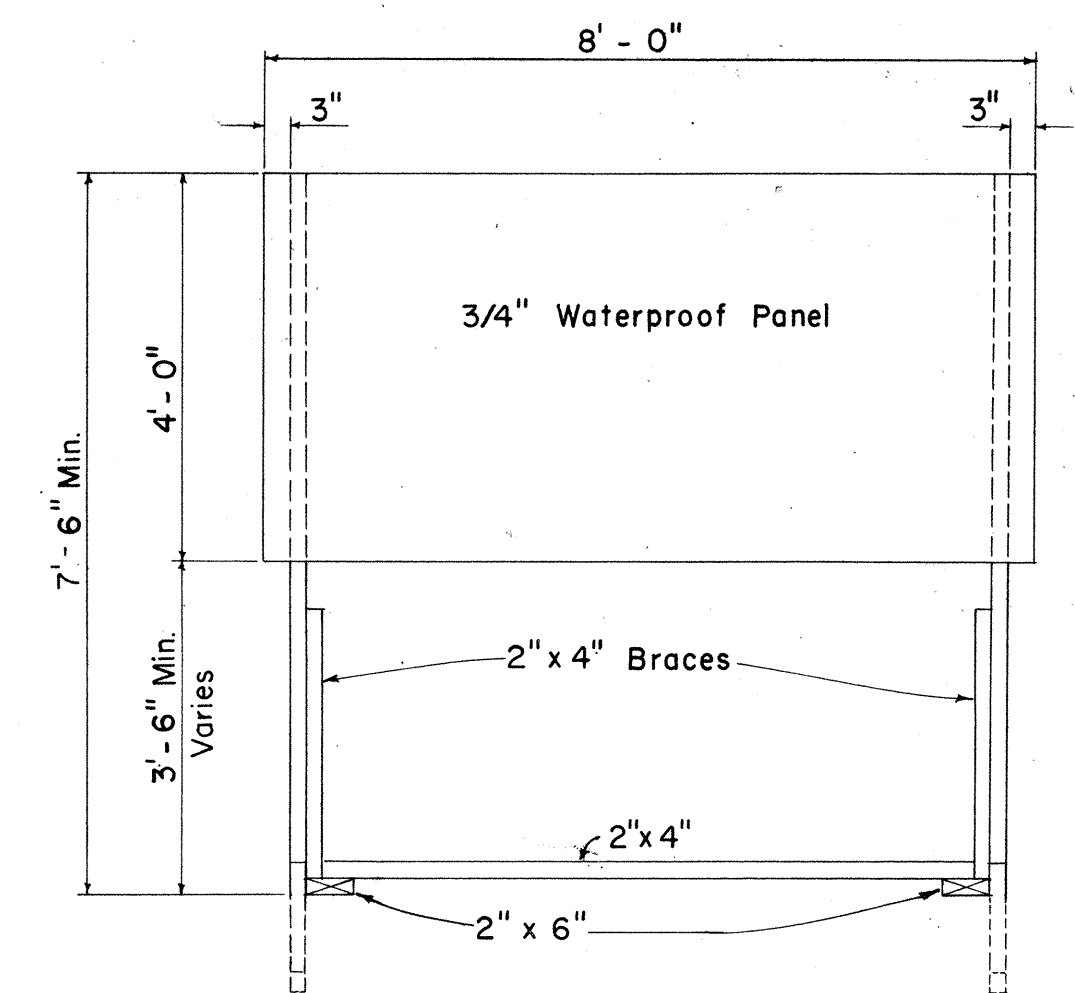
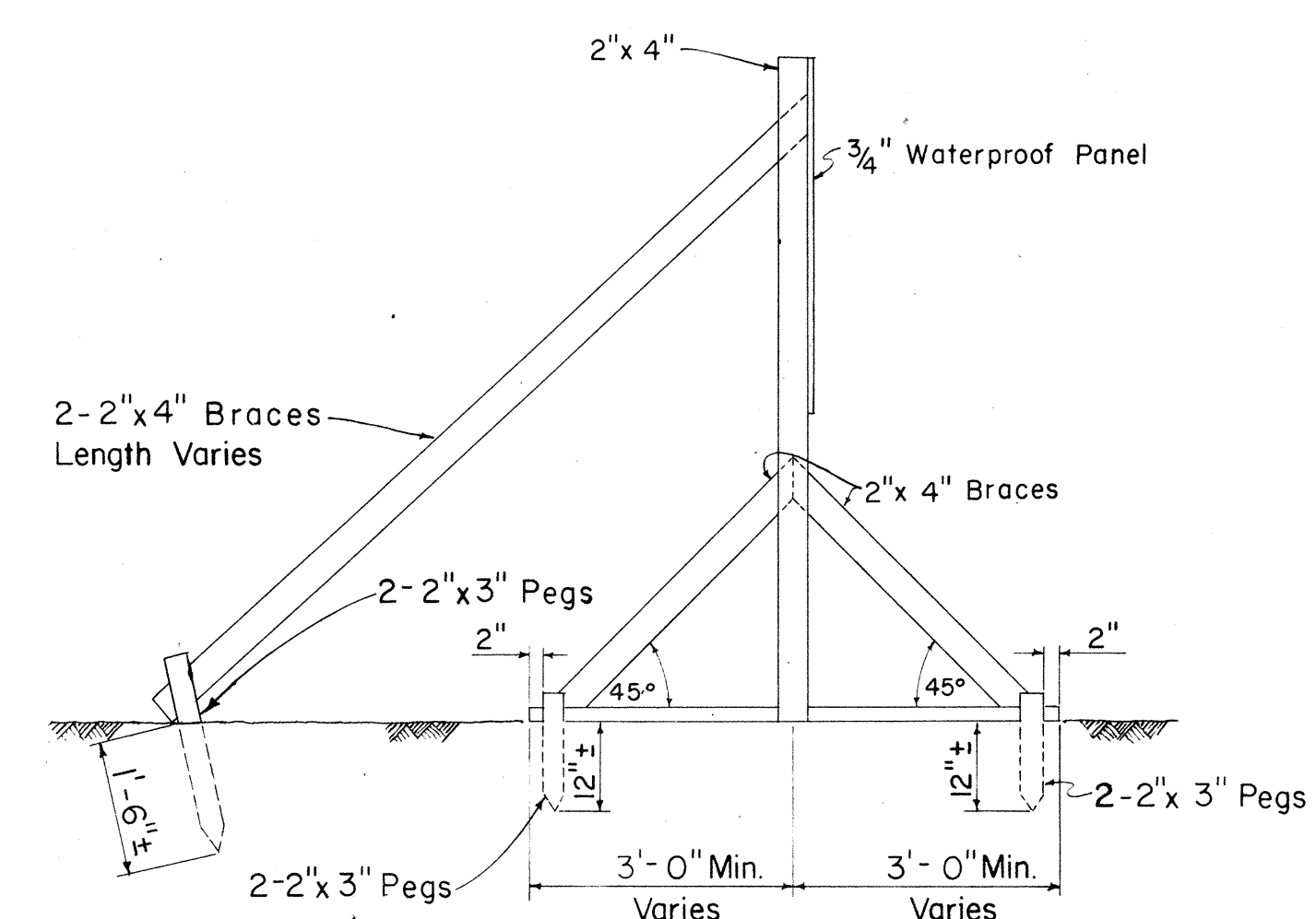
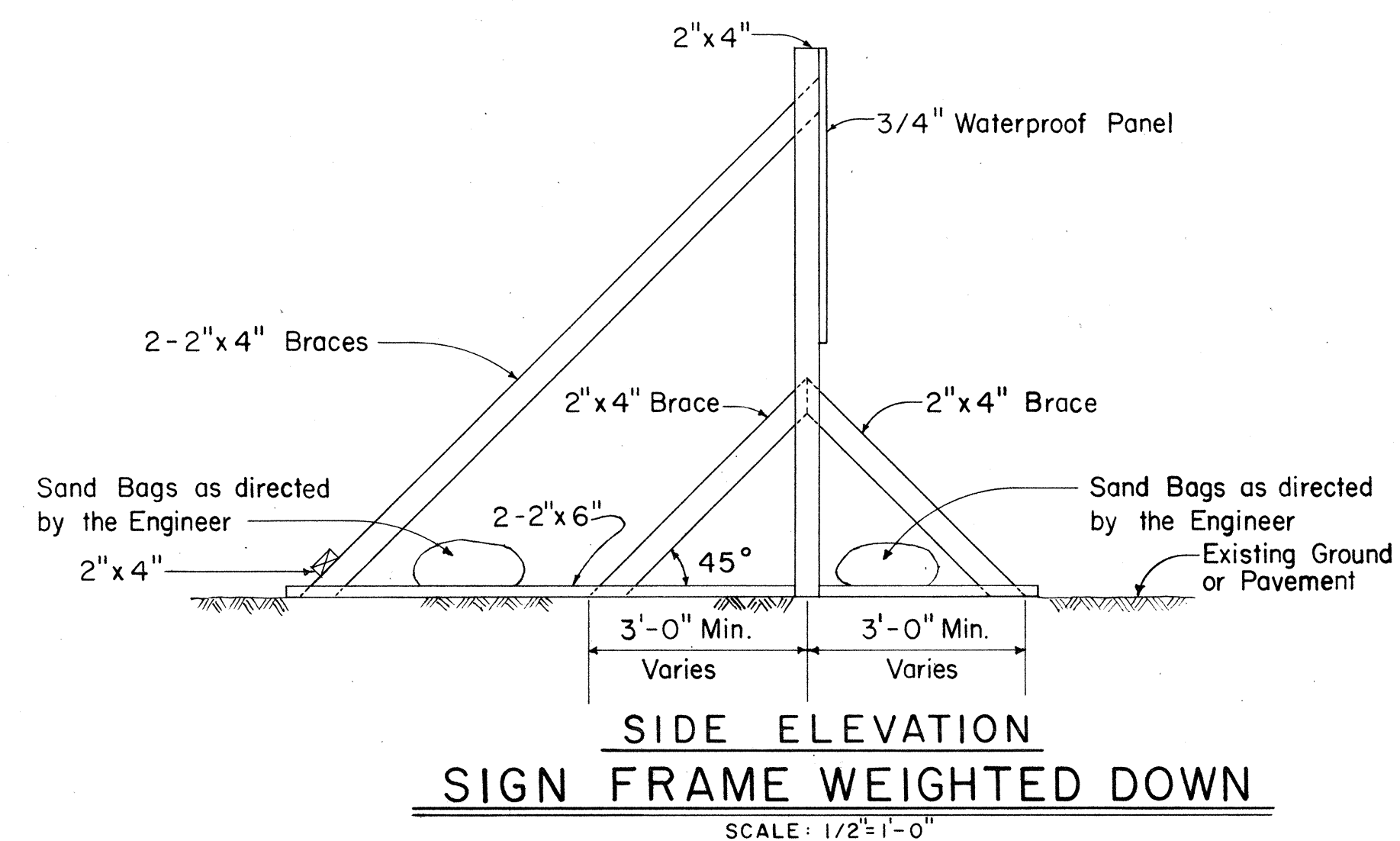
ORIGINAL PLAN	DATE
DESIGNED BY	
NOTED BY	
CHECKED BY	
DATE	



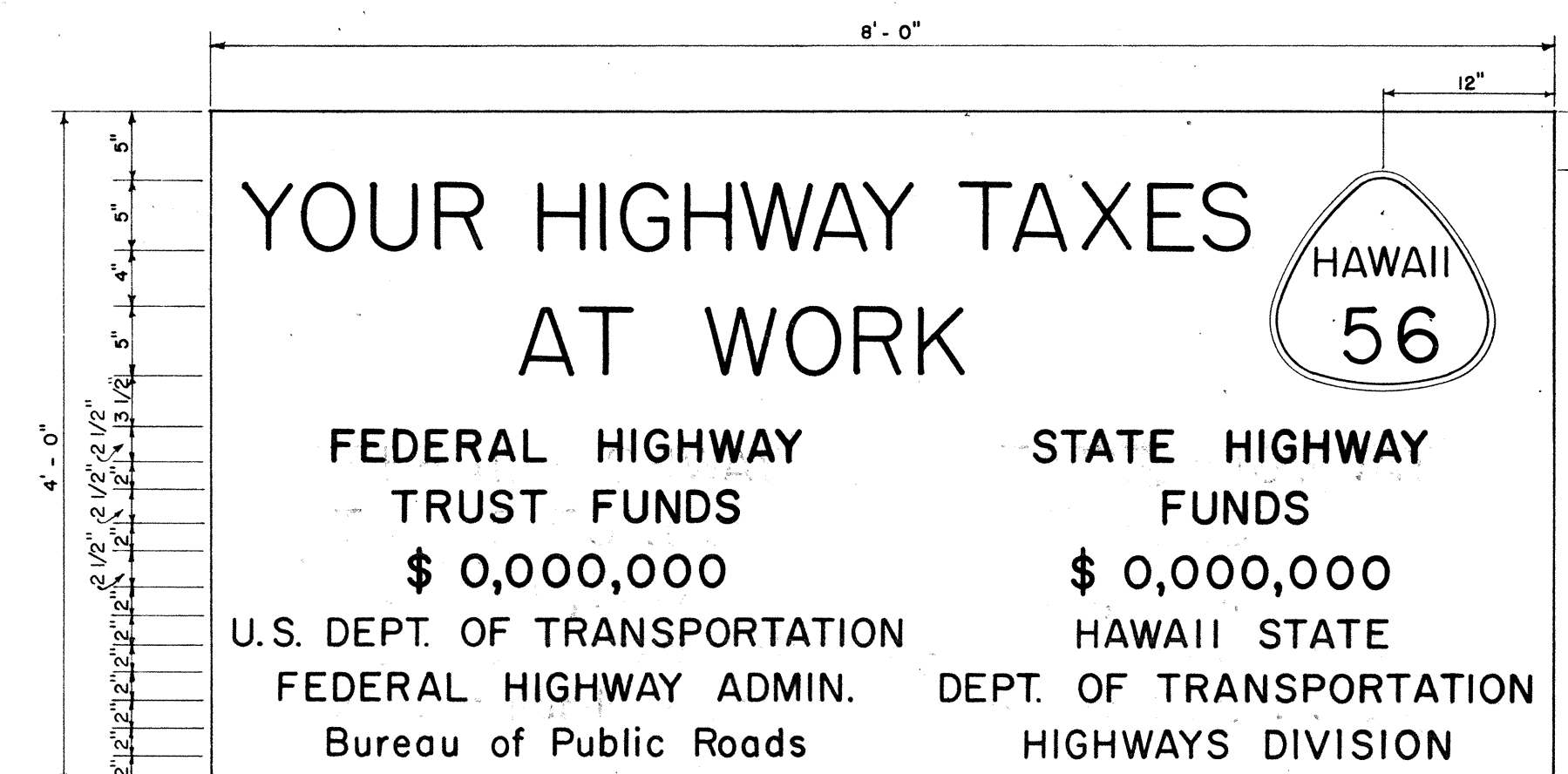
REFLECTOR MARKERS

STATE OF HAWAII DEPARTMENT OF TRANSPORTATION HIGHWAYS DIVISION	
STANDARD DETAILS	
MISCELLANEOUS SIGN DETAILS	
Not to scale	March, 1968
SHEET No. 3 OF 5 SHEETS	

FED. ROAD DIST. NO.	STATE	FED. AID PROJ. NO.	FISCAL YEAR	SHEET NO.	TOTAL SHEETS
HAWAII	HAW.	F-056-1(13)	1968	9	10



SIDE ELEVATION
FRONT ELEVATION
SIGN FRAME ANCHORED IN GROUND
 Scale: $\frac{1}{2}" = 1' - 0"$



SIGN PANEL
Scale: 1" = 1' - 0"

PRIMARY AND SECONDARY SYSTEMS
CONSTRUCTION IDENTIFICATION SIGN

Scale: As Shown

- CONSTRUCTION IDENTIFICATION SIGN NOTES

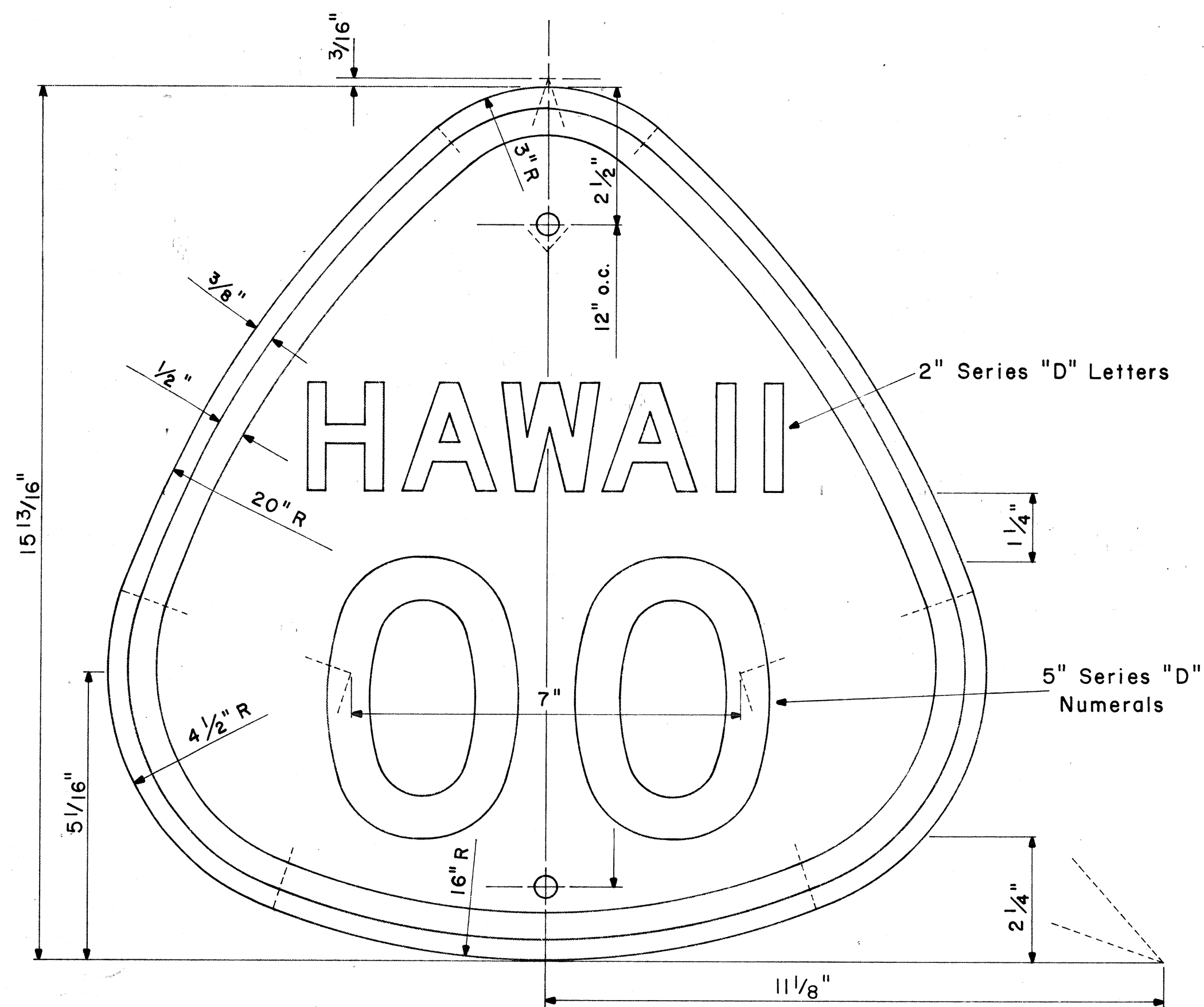
1. The Contractor shall construct, install and maintain the Construction Identification Signs, at the locations shown on the plans and as ordered by the Engineer.
2. All costs incurred in the construction, installation and maintenance of the Construction Identification Signs, will not be paid for separately, but shall be considered as included in the unit price paid for the various items in the proposal.
3. The Construction Identification Signs shall be removed at the completion of the project and are to become the Contractor's Property.
4. The exact figures for the various funds involved will be furnished to the Contractor for the incorporation in the Construction Identification Signs.
5. The legend shall be black on white background unless otherwise specified.
6. Refer to Sheet No. IO for details on the exact shape and size of the State route marker to be shown on these Construction Identification Signs.
7. All letters shall be of size and design shown and shall conform with "Standard Alphabets for Highway Signs", Bureau of Public Roads, 1952. Use Series "C" letters unless otherwise noted.

STATE OF HAWAII
DEPARTMENT OF TRANSPORTATION
STANDARD DETAILS
PRIMARY AND SECONDARY SYSTEMS
CONSTRUCTION IDENTIFICATION SIGNS

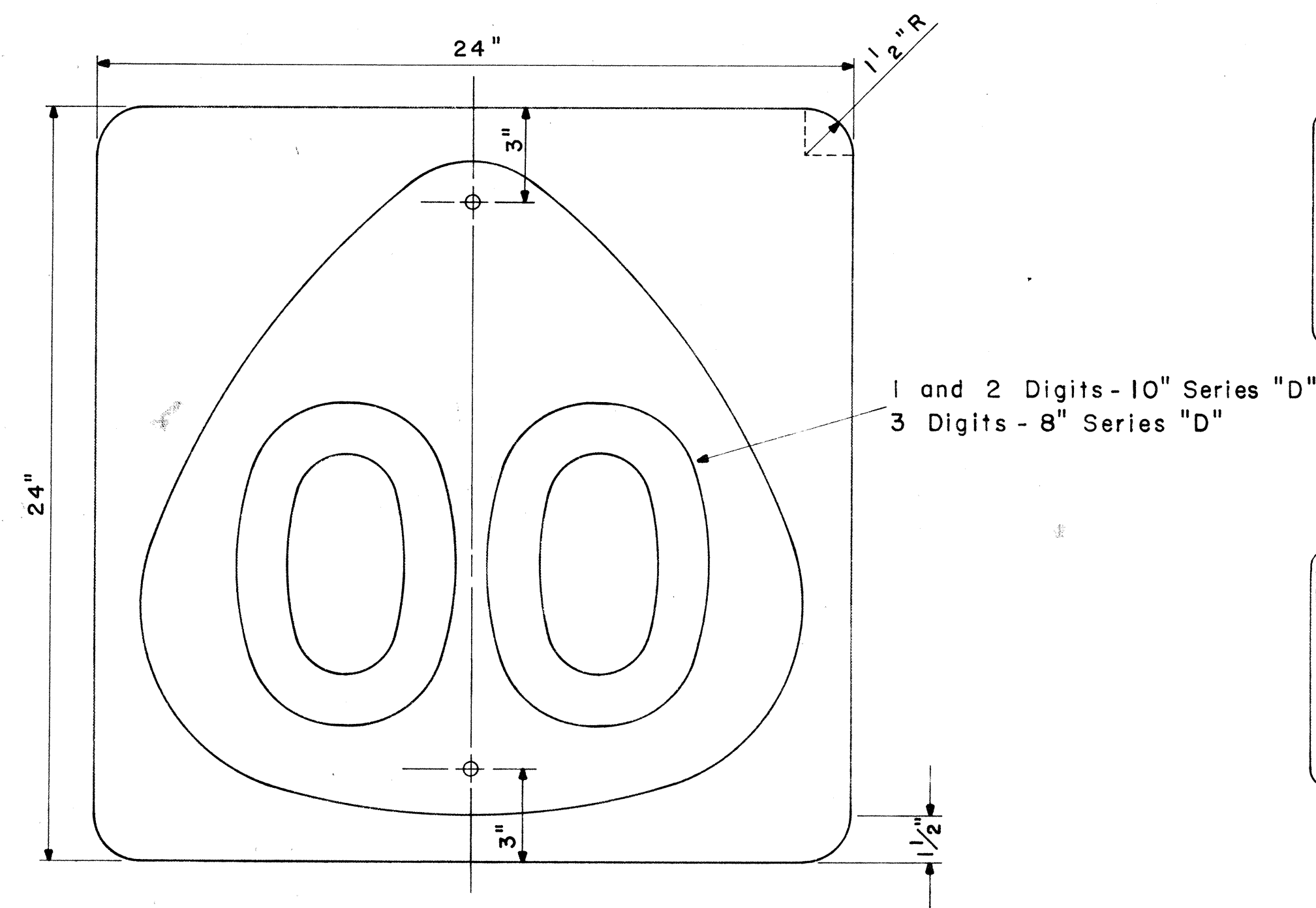
SHEET No. 4 OF 5 SHEETS

ORIGINAL PLAN	SURVEY PLOTTED BY..... DATE..... DRAWN BY..... DESIGNED BY..... QUANTITIES BY..... CHECKED BY.....
NOTE BOOK	
No.	

FED. ROAD DIST. NO.	STATE	FED. AID PROJ. NO.	FISCAL YEAR	SHEET NO.	TOTAL SHEETS
HAWAII	HAW.	F-056-1(13)	1968	10	10

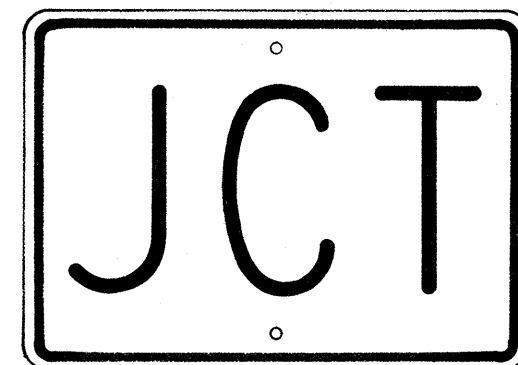


STATE ROUTE MARKER
M1-3(OO)
Scale: 1/2" = 1"

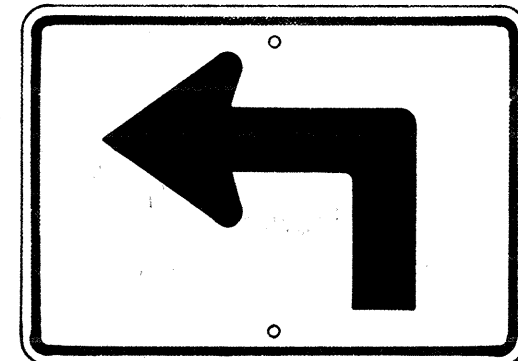


STATE ROUTE MARKER
M1-4(OO)
Scale: 1/4" = 1"

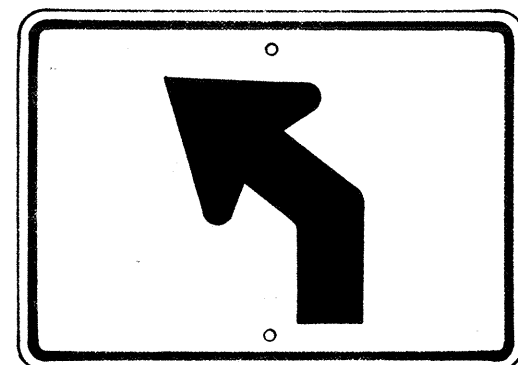
NOTE:
Multiply all dimensions of State Route Marker M1-3 by 1.3 for the dimensions of the shield for M1-4.



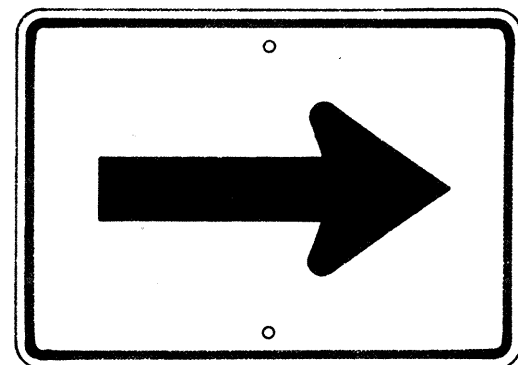
M 2-1
21" x 15"



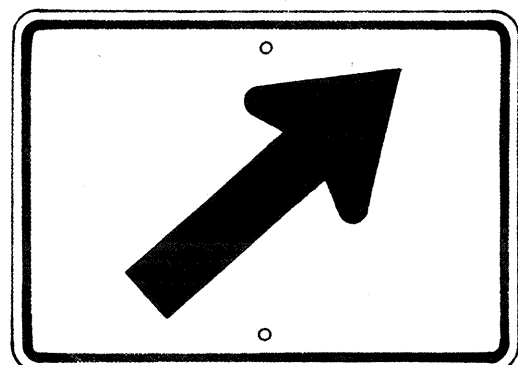
M 3-1-L
* M 3-1-R
21" x 15"



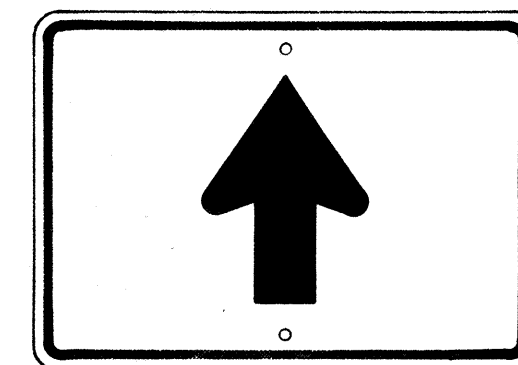
M 3-2-L
* M 3-2-R
21" x 15"



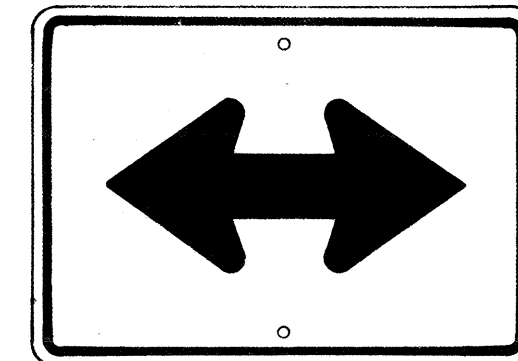
M 4-1
21" x 15"



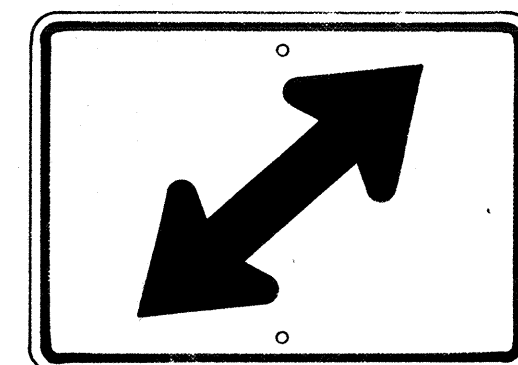
M 4-2-R
* M 4-2-L
21" x 15"



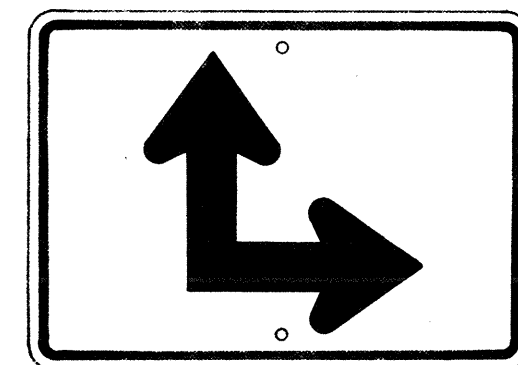
M 4-3
21" x 15"



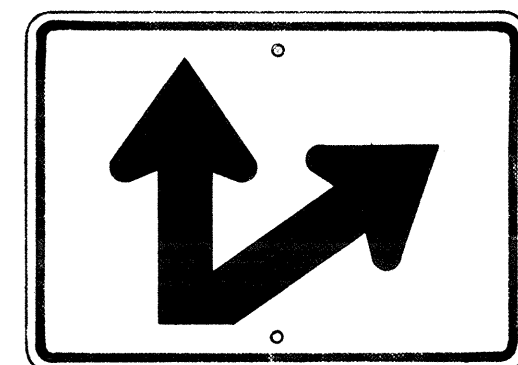
M 4-4
21" x 15"



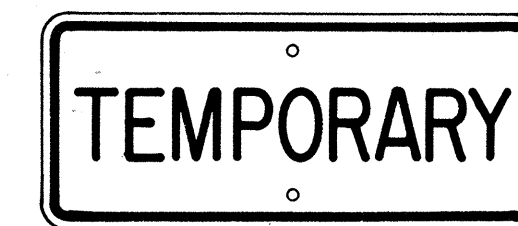
M 4-5-R
* M 4-5-L
21" x 15"



M 4-6-R
* M 4-6-L
21" x 15"



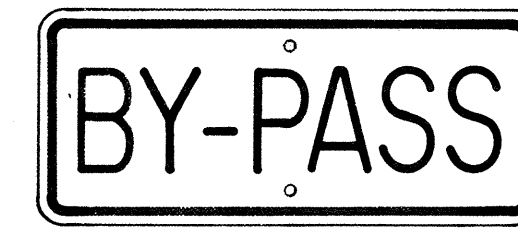
M 4-7-R
* M 4-7-L
21" x 15"



M 5-1
21" x 9"



M 5-2
21" x 9"



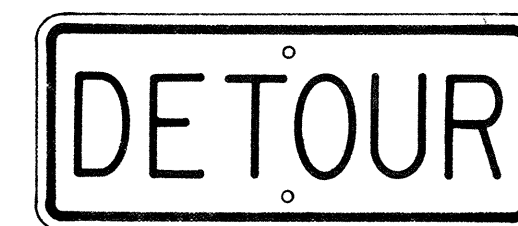
M 5-3
21" x 9"



M 5-4
21" x 9"



M 5-5
21" x 9"



M 5-6
21" x 9"



M 6-1-N
21" x 9"
(See Note 6)



M 7-1
18" x 12"

GENERAL NOTES

- The shape, color, dimensions, symbols, wording, lettering and reflectorizing of all signs shall be in accordance with the "Manual on Uniform Traffic Control Devices for Streets and Highways," dated June 1961 and the BPR manual "Standard Highway Signs," dated September 1961, unless otherwise specified.
- All letters and figures shall conform to the manual "Standard Alphabets for Highway Signs," Dept. of Commerce, Bureau of Public Roads, 1952.
- All markers shall be reflectorized unless otherwise specified.
- All markers shall have 3/8" bolt holes drilled at appropriate locations unless otherwise specified.
- All markers shall have a black legend on a white background unless otherwise specified.
- Sign message of Cardinal Direction Marker (M6-1) shall be denoted by the following suffixes:
M6-1-N : NORTH
M6-1-E : EAST
M6-1-S : SOUTH
M6-1-W : WEST
- Auxiliary markers denoted with the suffix "I" (M4-1-I) shall have a white legend on a blue background.
- Cardinal Direction Marker (M6-1) with suffix I (3) shall have a white legend on a blue background and shall be 30" x 15" in size.
- For M1-3 and M1-4 signs, number in () indicates route number and shall be as shown on the plan.

AUXILIARY MARKERS

Scale: 1/8" = 1"

* NOTE:
Signs shall be similar but opposite in direction.

STATE OF HAWAII
DEPARTMENT OF TRANSPORTATION
HIGHWAYS DIVISION
STANDARD DETAILS
STATE ROUTE MARKERS
AND
AUXILIARY MARKERS
Scale: As Noted
SHEET NO. 5 OF 5 SHEETS

ORIGINAL PLAN	DATE
DESIGNED BY	
NOTED BY	
CHECKED BY	
NO.	