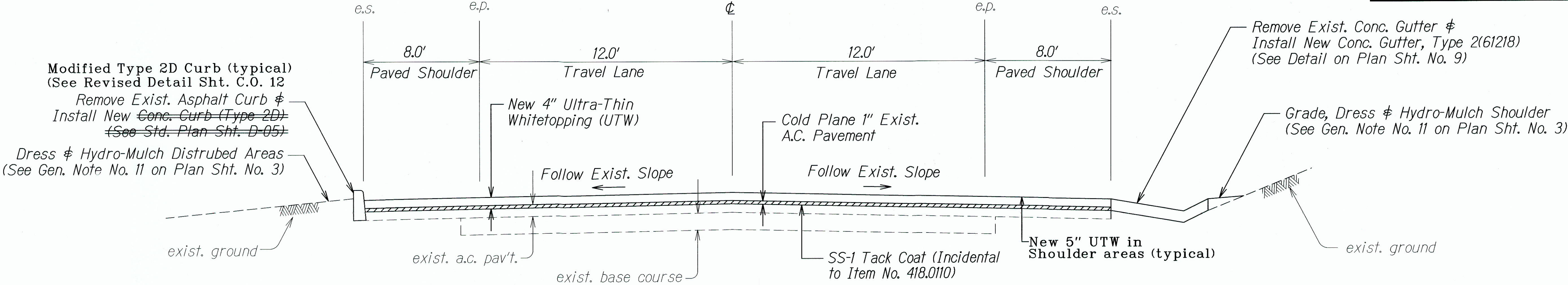
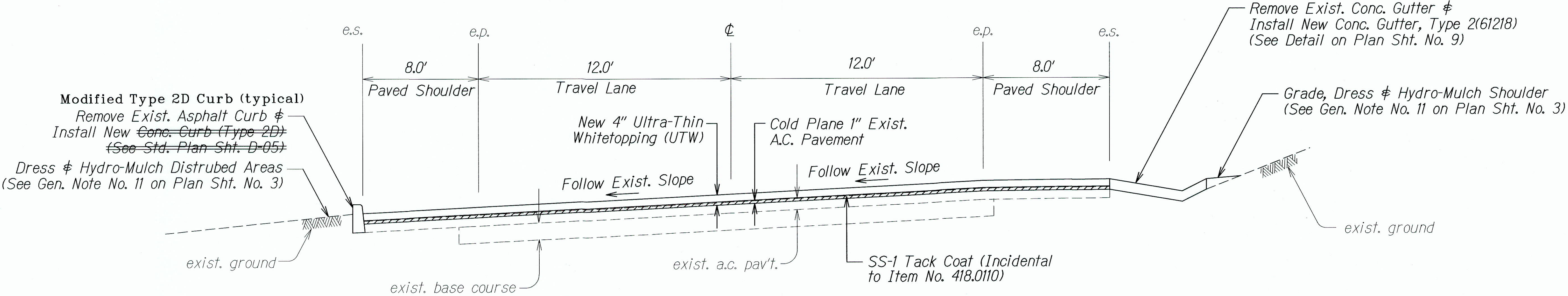


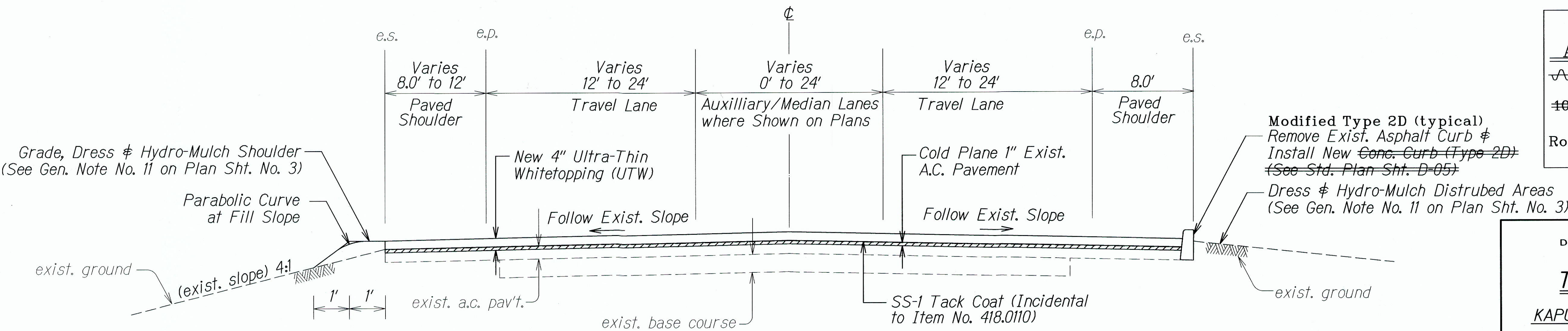
FED. ROAD DIST. NO.	STATE	FED-AID PROJ. NO.	FISCAL YEAR	SHEET NO.	TOTAL SHEETS
HAWAII	HAW.	NH-051-1(011)	2011	6	25



TYPICAL TANGENT SECTION



TYPICAL SUPERELEVATED SECTION



TYPICAL ROADWAY SECTION @ STA 67+50 to @ STA. 72+20

LEGEND FOR AS-BUILT POSTINGS	
	Squiggly line for as-built deletion
	Double line for as-built deletion
Roadway	Text for as-built posting

STATE OF HAWAII
DEPARTMENT OF TRANSPORTATION
HIGHWAYS DIVISION

TYPICAL SECTIONS
KAPULE HIGHWAY RESURFACING
Ahukini Road to Kuhio Highway
Fed-Aid Proj. No. NH-051-1(011)
Not to Scale
Date: April 2011

ORIGINAL PLAN	DATE
NOTED BY	04/11
DESIGNED BY	
CHECKED BY	

Modified Type 2D Curb (typical)
 Remove Exist. Asphalt Curb &
 Install New Conc. Curb (Type 2D)
 (See Std. Plan Sht. D-05)
 Dress & Hydro-Mulch Disturbed Areas
 (See Gen. Note No. 11 on Plan Sht. No. 3)

8.0' Paved Shoulder
 12.0' Travel Lane
 12.0' Travel Lane
 8.0' Paved Shoulder

Remove Exist. Concrete Gutter &
 Install New Conc. Gutter, Type 2(61218)
 (See Detail on Plan Sht. No. 9)


Grade, Dress & Hydro-Mulch Shoulder
 (See Gen. Note No. 11 on Plan Sht. No. 3)

New 4" Ultra-Thin Whitetopping (UTW)
 Cold Plane (Varies: 1" to 4")
 Exist. A.C. Pavement
 SS-1 Tack Coat (Incidental to Item No. 418.0110)

Follow Exist. Slope
 Follow Exist. Slope

exist. ground
 exist. a.c. pav't.
 exist. base course
 exist. ground

[illegible]

<h2 style="text-align: center;"><u>LEGEND FOR</u></h2> <h2 style="text-align: center;"><u>AS-BUILT POSTINGS</u></h2>	
	Squiggly line for as-built deletion
100.00	Double line for as-built deletion
Roadway	Text for as-built posting

Not to Scale Date: April 2011

SHEET No. 2 OF 4 SHEETS

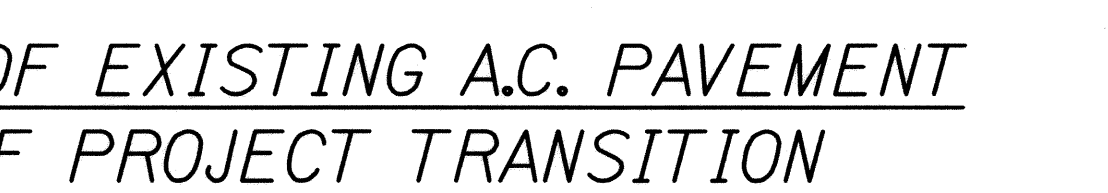
150' Transition
 Limits of AC Pav't. Recurfacing



Not to Scale



UTW Pav't.


$$\# Sta. 100+60 \neq \# Sta. 112+00)$$


Scale





ale

4.0" (UTW) Resurfacing

4.0" Ultra-Thin Whitetopping (UTW)

4.0" Ultra-Thin Whitetopping (UTW)

top of exist. pavement

Cold Plane 4" Exist. Asphalt Conc. Pav't. & Construct 4" Ultra-Thin Whitetopping (UTW) (To Match Exist. Elev.)

top of exist. bridge deck

SS-1 Tack Coat (Incidental to Item No. 418.0110)

Cold Plane 1.0" Exist. A.C. Pav't. as Shown in Hatched Area

Cold Plane Exist. A.C. Pav't. as Shown in Hatched Area

Thickened Edge at Bridge Approach (See Detail on Plan Sht. No. 12)

200' Transition

Sta. 100+60/± Sta.

top of exist. a.c. pav't.

Saw Cut

8" Hot Mix Glassphalt Base Course

TYPICAL RECONSTRUCTION

Not to Scale

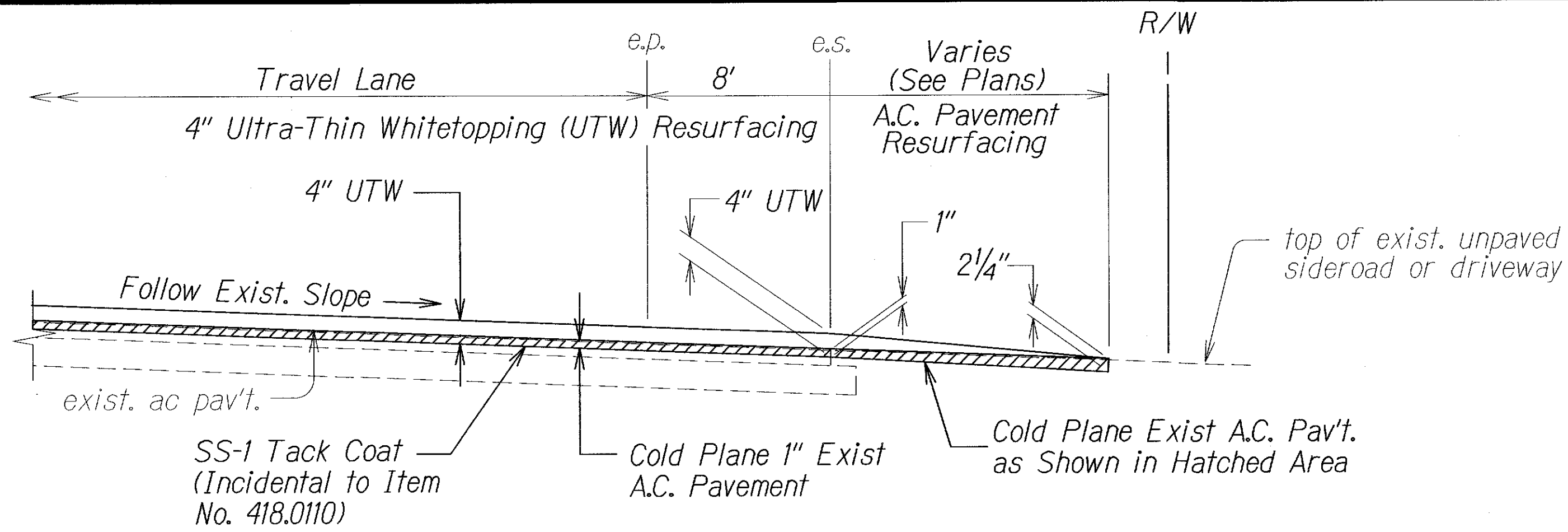
TYPICAL SECTIONS

KARULE HIGHWAY RESURFACING

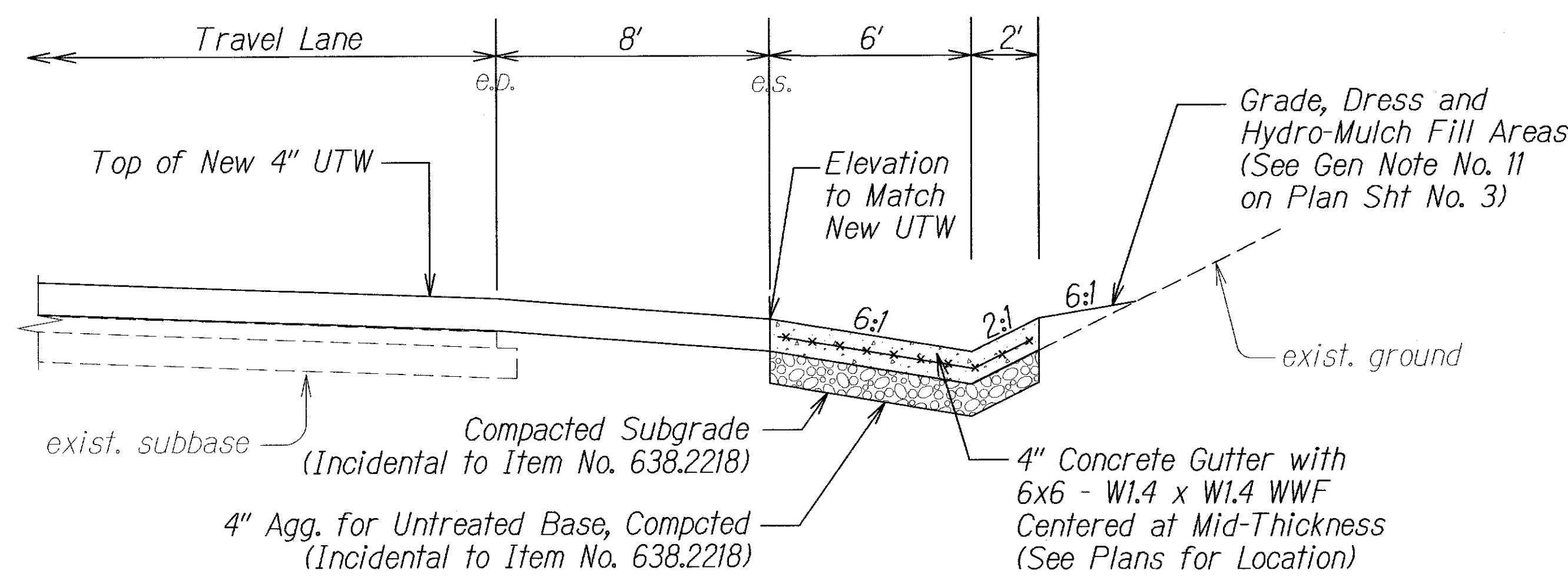
KAPULE HIGHWAY RESURFACING
Ahukini Road to Kuhio Highway
Fed-Aid Proj. No. NH-051-K(011)

SHEET No. 3 OF 4 SHEETS

FED. ROAD DIST. NO.	STATE	FED-AID PROJ. NO.	FISCAL YEAR	SHEET NO.	TOTAL SHEETS
HAWAII	HAW.	NH-051-K(011)	2011	9	25

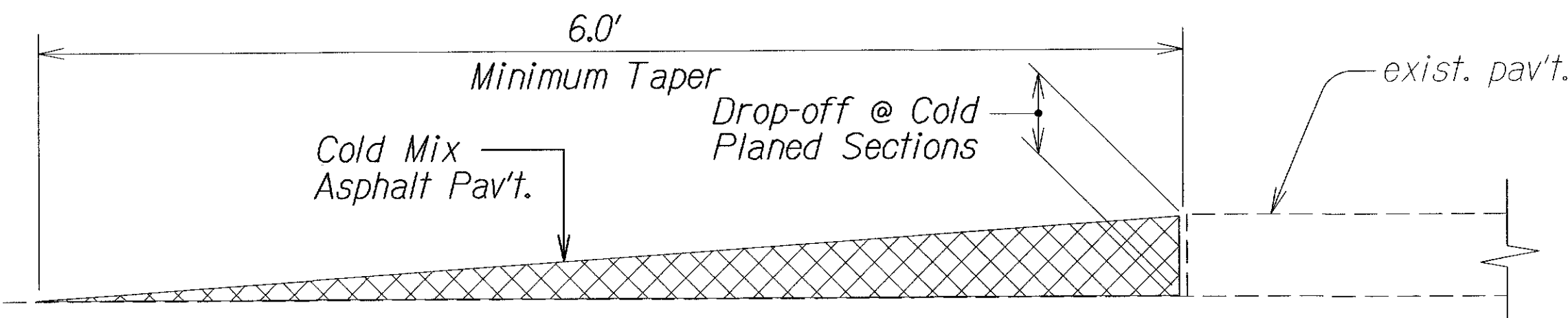


RESURFACING AT PAVED SIDEROADS & DRIVEWAYS
Not to Scale



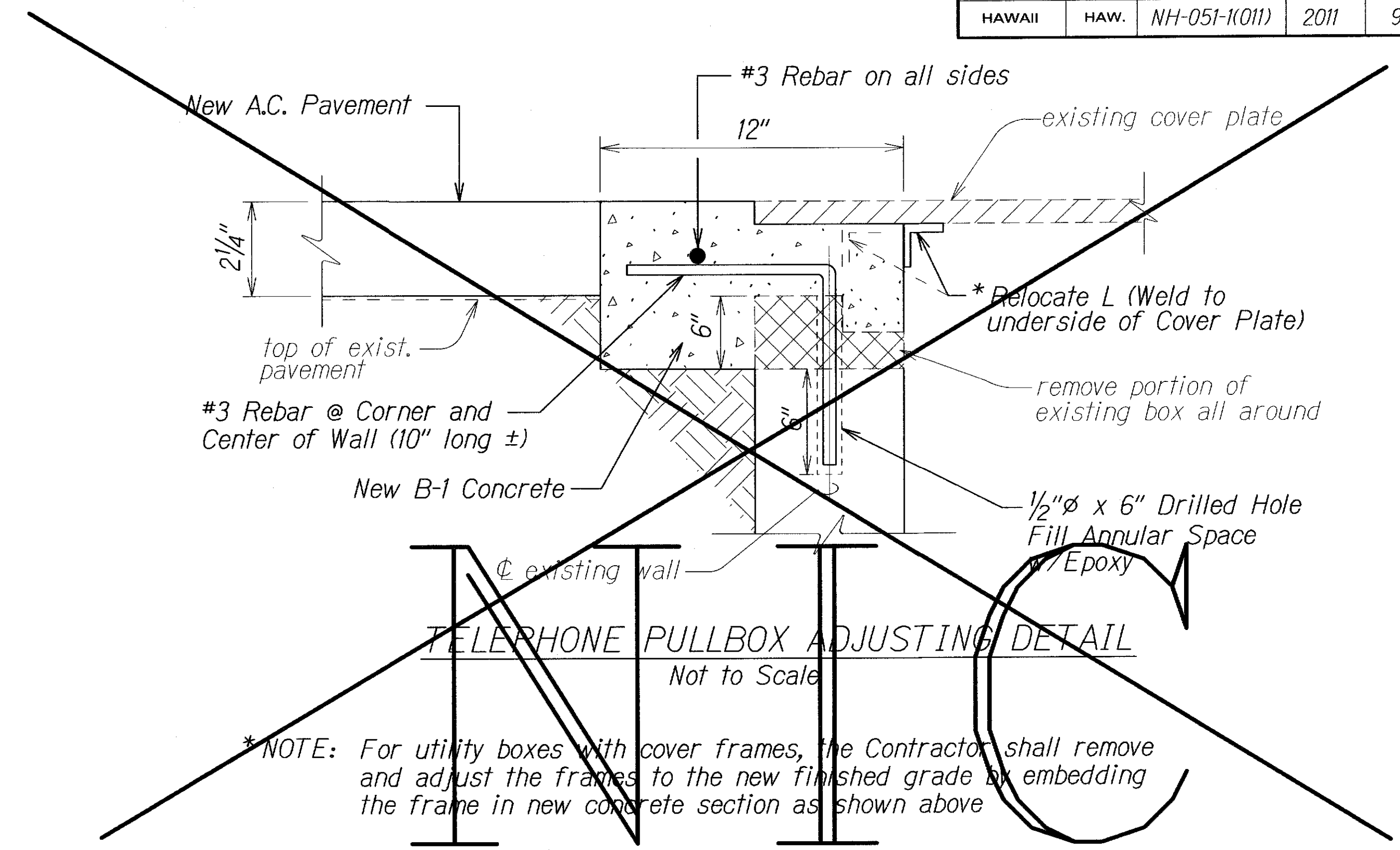
TYPICAL GUTTER SECTION
Not to Scale

- Notes:
1. Removal and disposal of existing concrete gutter; grading, dressing and hydro-mulch seeding of fill areas and wire mesh reinforcement of concrete gutter shall be considered incidental to Item No. 638.2218 - Gutter Type 2(61218) and will not be paid separately.
 2. Gutter longitudinal grade shall be uniform throughout its length. Specified tolerance shall be no greater than 3/16" from established grade line. Submit calculated gutter invert elevations at 10' spacing including begin and end of gutter invert, to Engineer for acceptance prior to concrete placement.

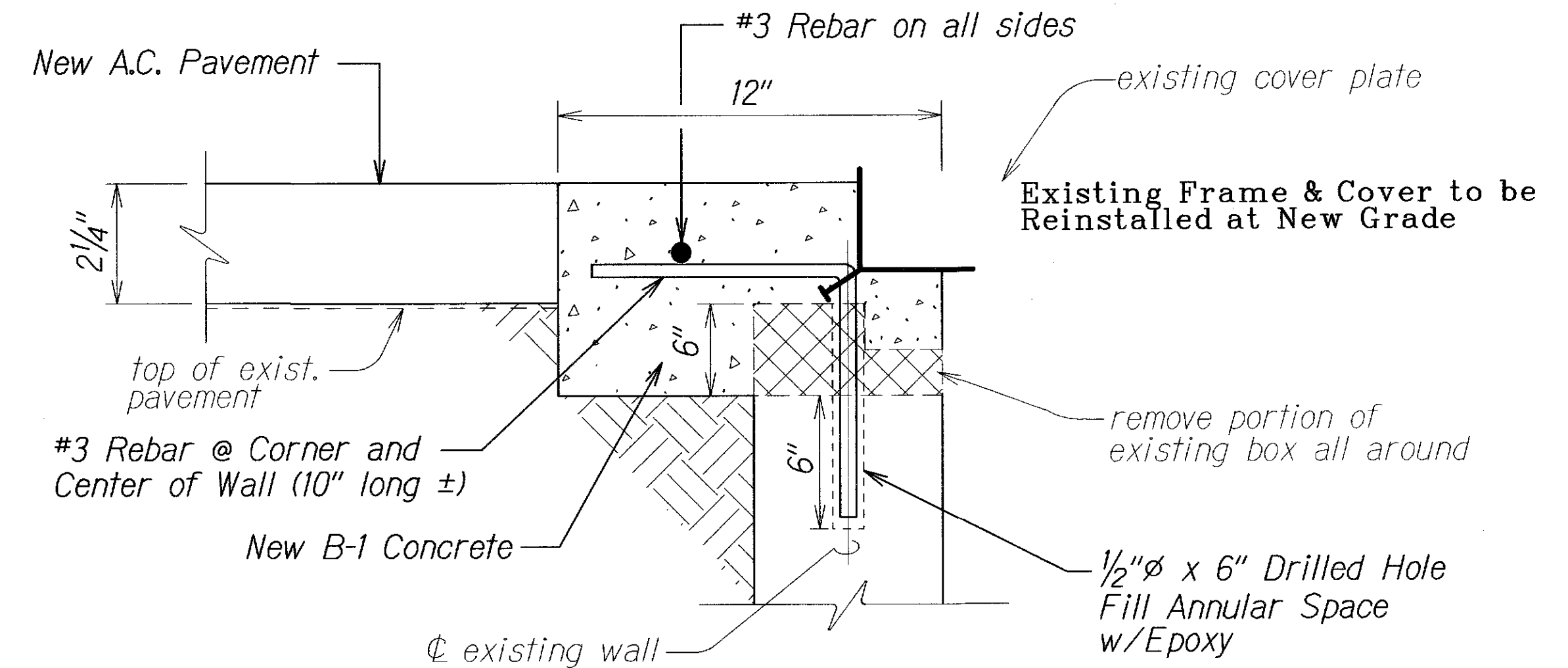


TEMPORARY TRANSITION AT
COLD PLANED AREAS
Not to Scale

Note: Contractor shall construct temporary pavement taper to prevent sharp pavement drop-offs at all cold planed sections. Prior to final Asphalt Pavement placement, temporary pavement taper shall be removed.



*NOTE: For utility boxes with cover frames, the Contractor shall remove and adjust the frames to the new finished grade by embedding the frame in new concrete section as shown above



GRATED DRAIN INLET ADJUSTING DETAIL
Not to Scale

*NOTE: For utility boxes with cover frames, the Contractor shall remove and adjust the frames to the new finished grade by embedding the frame in new concrete section as shown above

LEGEND FOR AS-BUILT POSTINGS	
	Squiggly line for as-built deletion
	Double line for as-built deletion
Roadway	Text for as-built posting

STATE OF HAWAII
DEPARTMENT OF TRANSPORTATION
HIGHWAYS DIVISION

TYPICAL SECTIONS
KAPULE HIGHWAY RESURFACING
Ahukini Road to Kuhio Highway
Fed-Aid Proj. No. NH-051-K(011)
Not to Scale
Date: April 2011

SHEET No. 4 OF 4 SHEETS