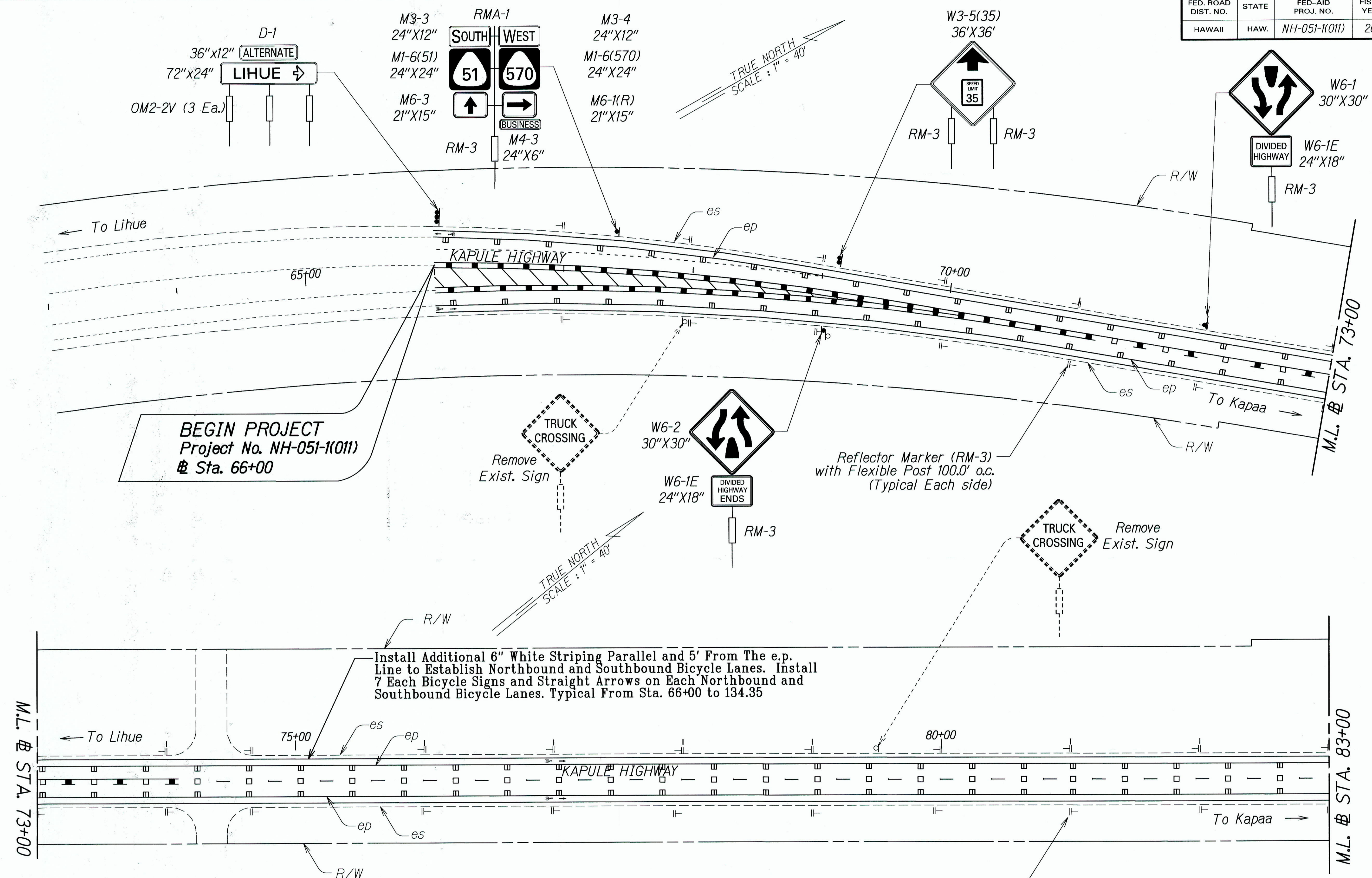


FED. ROAD DIST. NO.	STATE	FED-AID PROJ. NO.	FISCAL YEAR	SHEET NO.	TOTAL SHEETS
HAWAII	HAW.	NH-051-1(011)	2011	20	25



Notes:

1. All Raised Pavement Markers @ edge of pavement shall be 20.0' o.c.
2. All Raised Pavement Markers @ centerline of pavement, channelizing island, deceleration/acceleration lane and transverse median markings shall be 10.0' o.c.
3. Install one (1) row of Type D Raised Pavement Markers on both outside edges of double yellow lines (centerline & transverse median). Refer to Legend and Notes on Plan Sheet No. 19.

LEGEND FOR AS-BUILT POSTINGS	
	Squiggly line for as-built deletion
	Double line for as-built deletion
Roadway	Text for as-built posting

Reflector Marker (RM-3) with Flexible Post 100.0' o.c. (Typical Each side)

STATE OF HAWAII
DEPARTMENT OF TRANSPORTATION
HIGHWAYS DIVISION

PAVEMENT MARKING
TRAFFIC SIGNING PLAN

KAPULE HIGHWAY RESURFACING
Ahukini Road to Kuhio Highway
Fed-Aid Proj. No. NH-051-1(011)

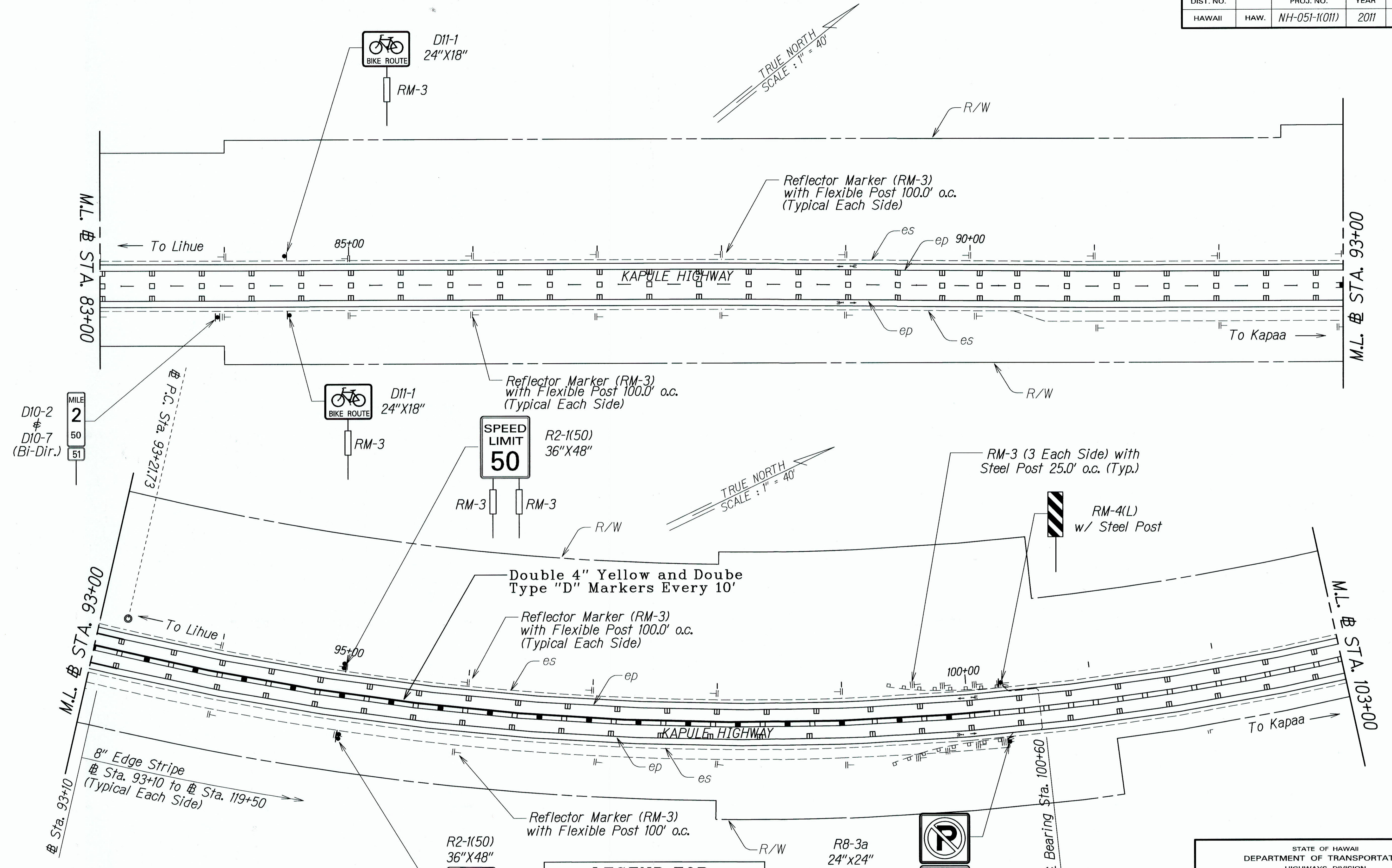
Scale: 1" = 40' Date: April 2011

SHEET No. T2 OF 6 SHEETS

"AS-BUILT"

SURVEY PLOTTED BY	DATE
DESIGNED BY	
NOTED BY	
QUANTITIES BY	
CHECKED BY	

FED. ROAD DIST. NO.	STATE	FED-AID PROJ. NO.	FISCAL YEAR	SHEET NO.	TOTAL SHEETS
HAWAII	HAW.	NH-051-1(011)	2011	21	25



- Notes:
1. All Raised Pavement Markers @ edge of pavement shall be 20.0' o.c.
 2. All Raised Pavement Markers @ centerline of pavement, channelizing island, deceleration/acceleration lane and transverse median markings shall be 10.0' o.c.
 3. Install one (1) row of Type D Raised Pavement Markers on both outside edges of double yellow lines (centerline & transverse median). Refer to Legend and Notes on Plan Sheet No. 19.

LEGEND FOR AS-BUILT POSTINGS	
	Squiggly line for as-built deletion
	Double line for as-built deletion
Roadway	Text for as-built posting

ORIGINAL PLAN	DATE
DESIGNED BY	04/11
TRACED BY	
DESIGNED BY	
QUANTITIES BY	
CHECKED BY	

STATE OF HAWAII
DEPARTMENT OF TRANSPORTATION
HIGHWAYS DIVISION

PAVEMENT MARKING
TRAFFIC SIGNING PLAN

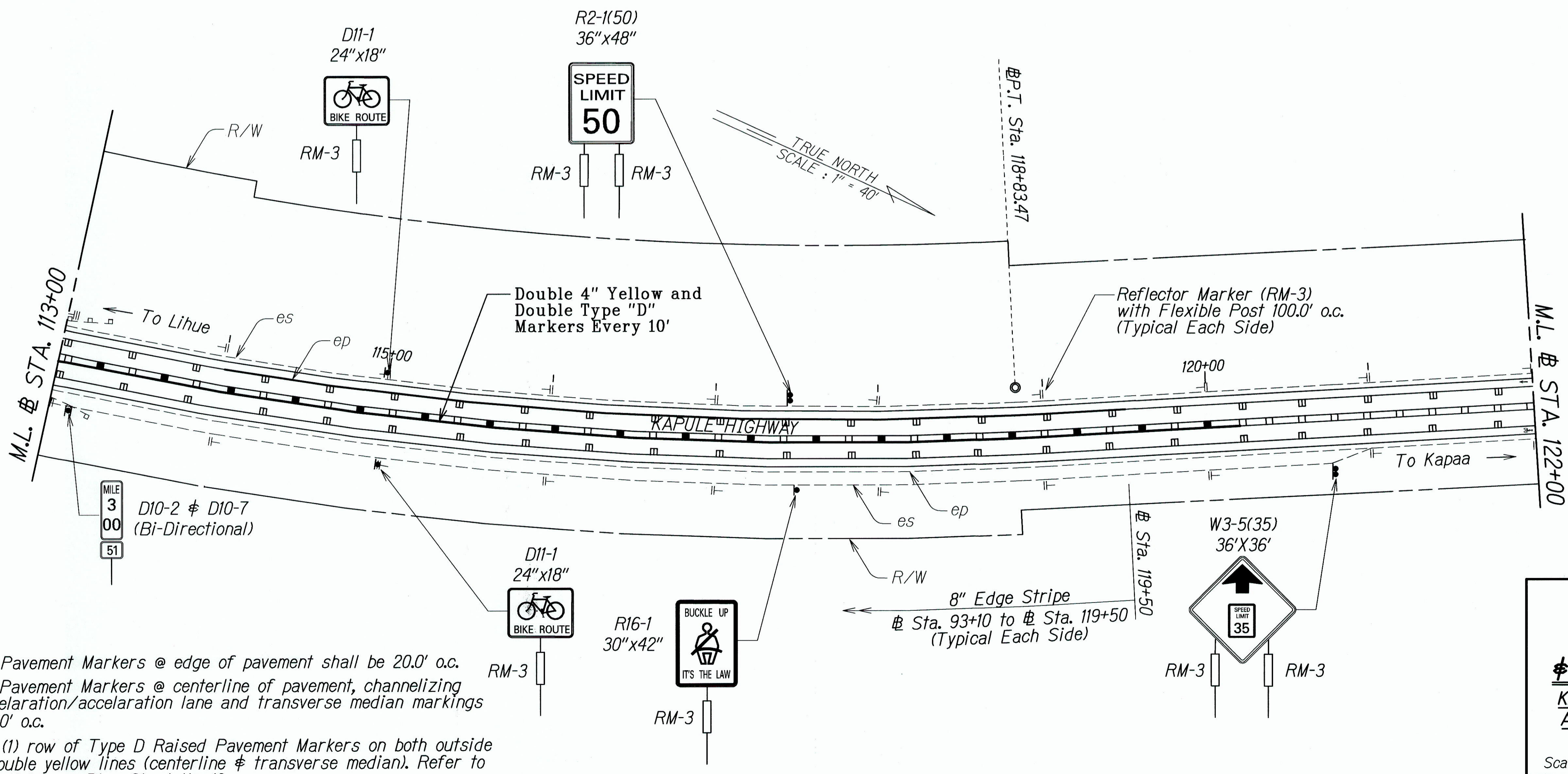
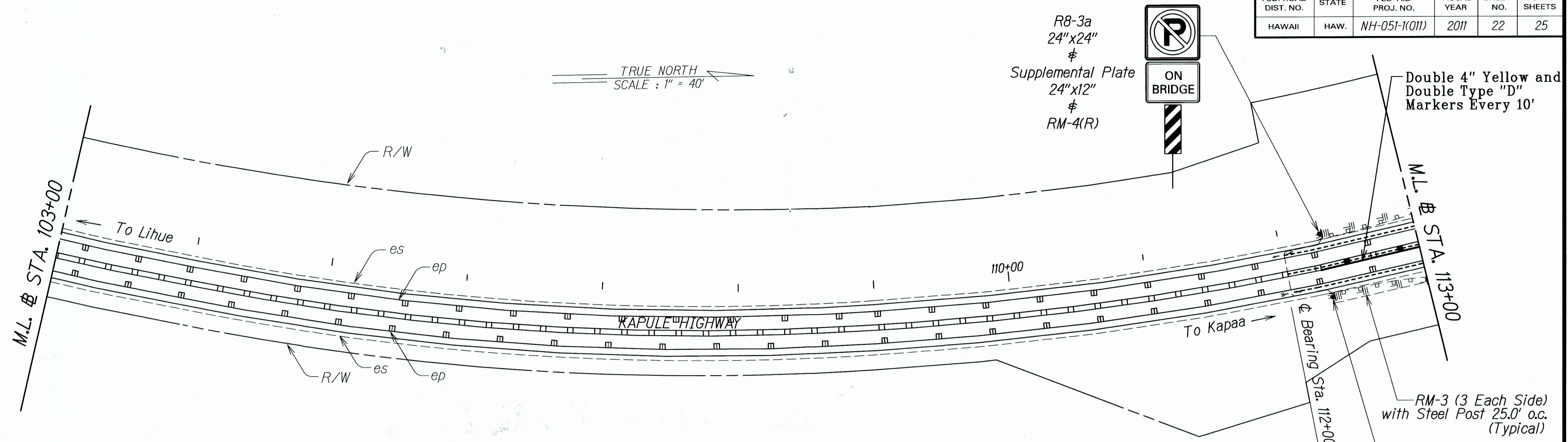
KAPULE HIGHWAY RESURFACING
Ahukini Road to Kuhio Highway
Fed-Aid Proj. No. NH-051-1(011)

Scale: 1" = 40' Date: April 2011

SHEET No. T3 OF 6 SHEETS

"AS-BUILT"

FED. ROAD DIST. NO.	STATE	FED-AID PROJ. NO.	FISCAL YEAR	SHEET NO.	TOTAL SHEETS
HAWAII	HAW.	NH-051-1(011)	2011	22	25



LEGEND FOR AS-BUILT POSTINGS	
	Squiggly line for as-built deletion
	Double line for as-built deletion
	Text for as-built posting

STATE OF HAWAII
DEPARTMENT OF TRANSPORTATION
HIGHWAYS DIVISION

PAVEMENT MARKING
TRAFFIC SIGNING PLAN

KAPULE HIGHWAY RESURFACING
Ahukini Road to Kuhio Highway
Fed-Aid Proj. No. NH-051-1(011)

Scale: 1" = 40' Date: April 2011

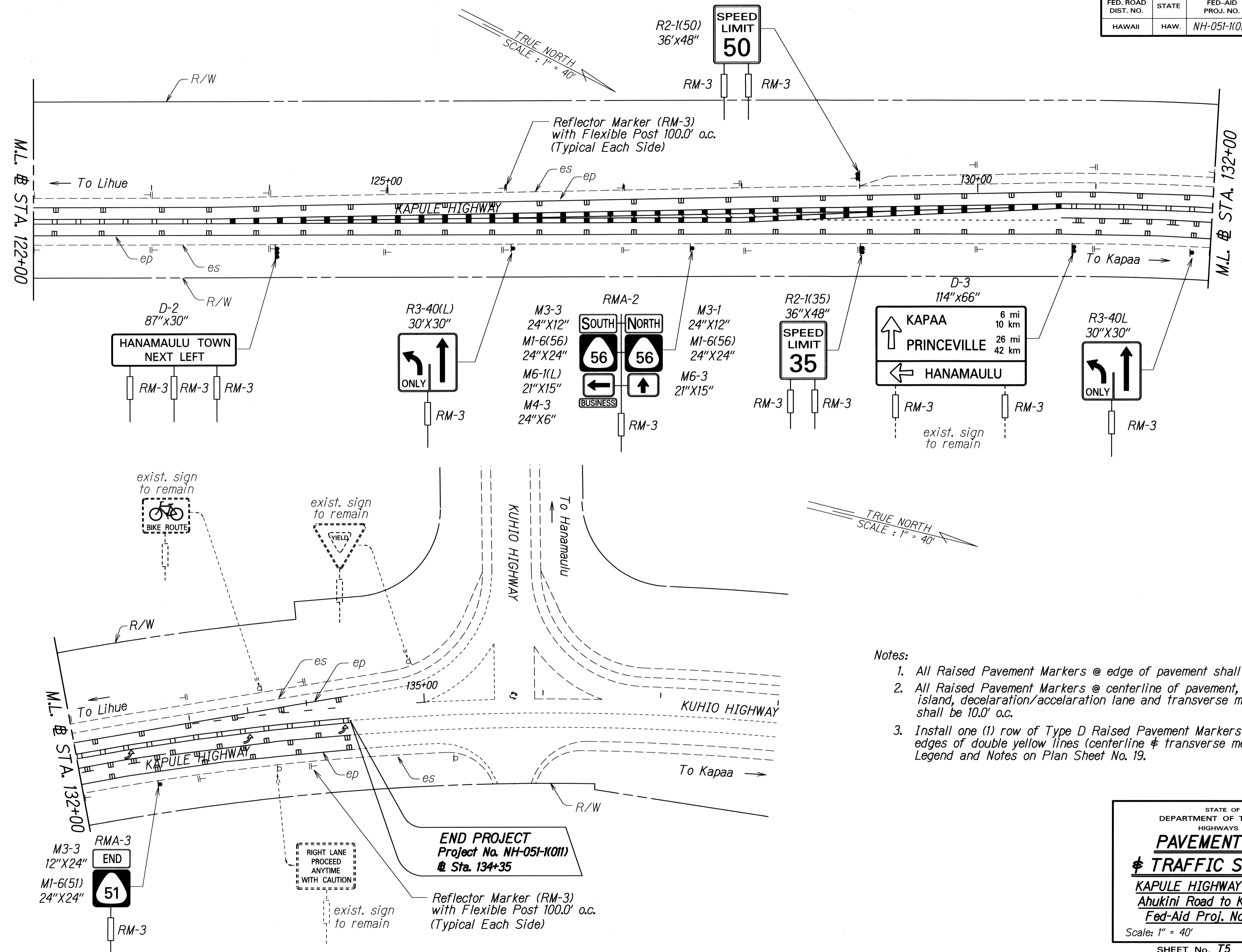
Notes:

- All Raised Pavement Markers @ edge of pavement shall be 20.0' o.c.
- All Raised Pavement Markers @ centerline of pavement, channelizing island, deceleration/acceleration lane and transverse median markings shall be 10.0' o.c.
- Install one (1) row of Type D Raised Pavement Markers on both outside edges of double yellow lines (centerline & transverse median). Refer to Legend and Notes on Plan Sheet No. 19.

DATE	11/7/11
SURVEY PLOTTED BY	
DRAWN BY	
DESIGNED BY	
QUANTITIES BY	
CHECKED BY	
ORIGINAL PLAN	
NOTE BOOK	
REVISIONS	

"AS-BUILT"

FED. ROAD DIST. NO.	STATE	FED-AID PROJ. NO.	FISCAL YEAR	SHEET NO.	TOTAL SHEETS
HAWAII	HAW.	NH-051-(K011)	2011	23	25



- Notes:
1. All Raised Pavement Markers @ edge of pavement shall be 20.0' o.c.
 2. All Raised Pavement Markers @ centerline of pavement, channelizing island, deceleration/acceleration lane and transverse median markings shall be 10.0' o.c.
 3. Install one (1) row of Type D Raised Pavement Markers on both outside edges of double yellow lines (centerline & transverse median). Refer to Legend and Notes on Plan Sheet No. 19.

SURVEY PLOTTED BY	DATE
DRAWN BY	
TRACED BY	
NOTED BY	
DESIGNED BY	
CHECKED BY	

STATE OF HAWAII
DEPARTMENT OF TRANSPORTATION
HIGHWAYS DIVISION

PAVEMENT MARKING
TRAFFIC SIGNING PLAN

KAPULE HIGHWAY RESURFACING
Ahukini Road to Kuhio Highway
Fed-Aid Proj. No. NH-051-(K011)

Scale: 1" = 40' Date: April 2011