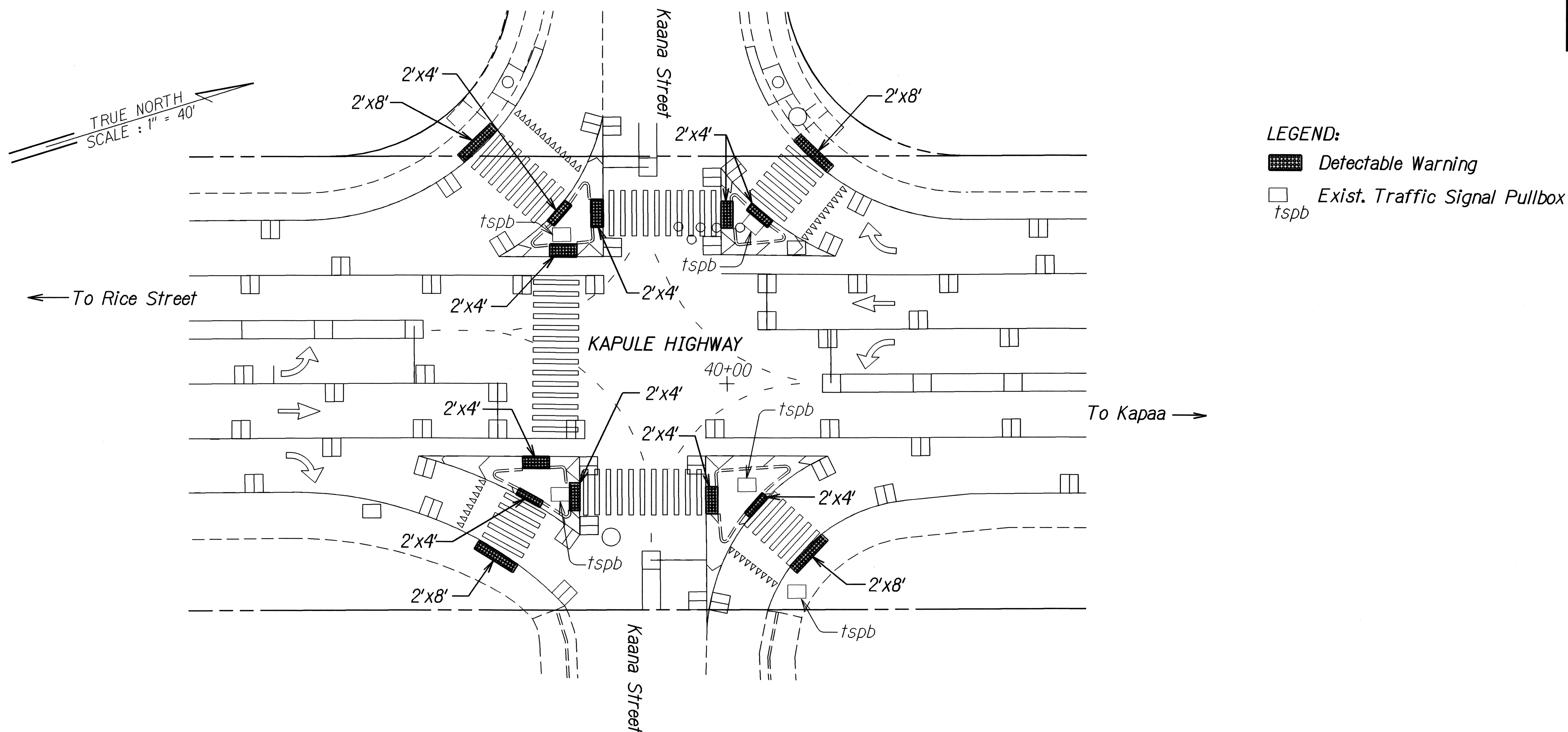


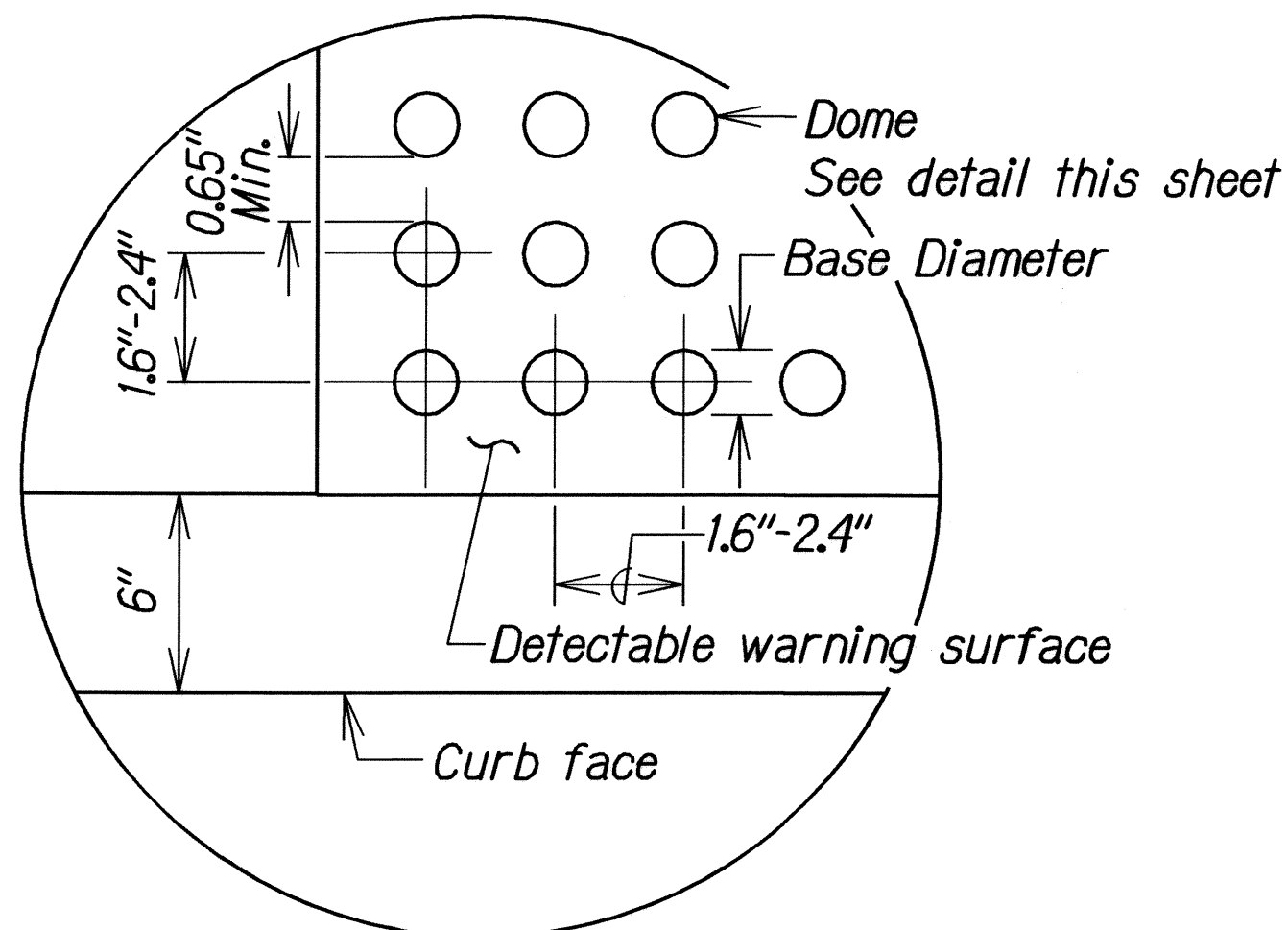
FED. ROAD DIST. NO.	STATE	PROJ. NO.	FISCAL YEAR	SHEET NO.	TOTAL SHEETS
HAWAII	HAW.	51B-01-08M	2008	27	33



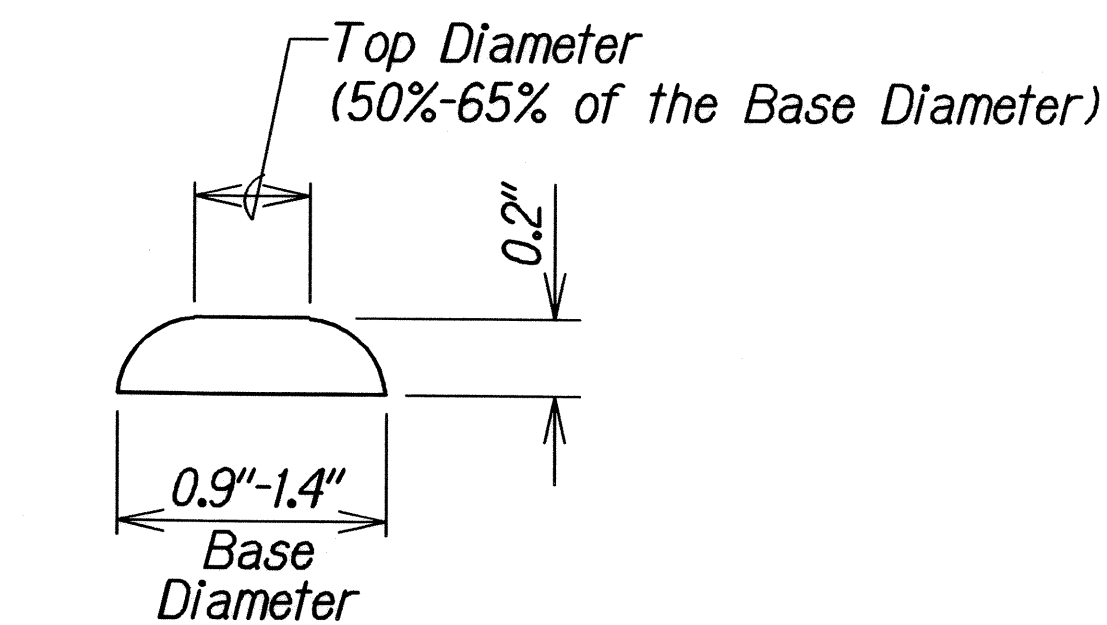
**DETECTABLE WARNING PLAN**  
Not to Scale

**NOTES:**

1. Detectable warnings shall be 24 inches in the direction of travel and extend the full width of the curb ramp or flush surface (does not include flares).
2. Truncated domes shall have a diameter of 0.9 to 1.4 inch at the bottom, a diameter of 50%-65% of the base diameter at the top, a height of 0.2 inch and a center-to-center spacing of 1.6 to 2.4 inches measured along one side of a square arrangement.
3. Domes shall be aligned on a square grid in the predominant direction of travel to permit wheels to roll between the domes.
4. There shall be a minimum of 70 percent contrast in light reflectance between the detectable warning and an adjoining surface, or the detectable warning shall be "safety yellow".
5. The material used to provide visual contrast shall be an integral part of the detectable warning surface.
6. The detectable warning shall be located so that the edge nearest the curb line or other potential hazard is 6 to 8 inches from the curb line.



**ENLARGEMENT**



**DOMES SECTION**

**DETECTABLE WARNING DETAIL**  
Not to Scale

STATE OF HAWAII

DEPARTMENT OF TRANSPORTATION

HIGHWAYS DIVISION

**DETECTABLE WARNING**

**PLAN AND DETAILS**

KAPULE HIGHWAY RESURFACING

Rice Street to Ahukini Road

Project No. 51B-01-08M

Not to Scale

Date: May 2008

SHEET No. 1 OF 1

SHEETS

ORIGINAL PLAN	SURVEY PLOTTED BY	DATE
NOTE BOOK	DESIGNED BY	1/08
CHECKED BY	QUANTITIES BY	