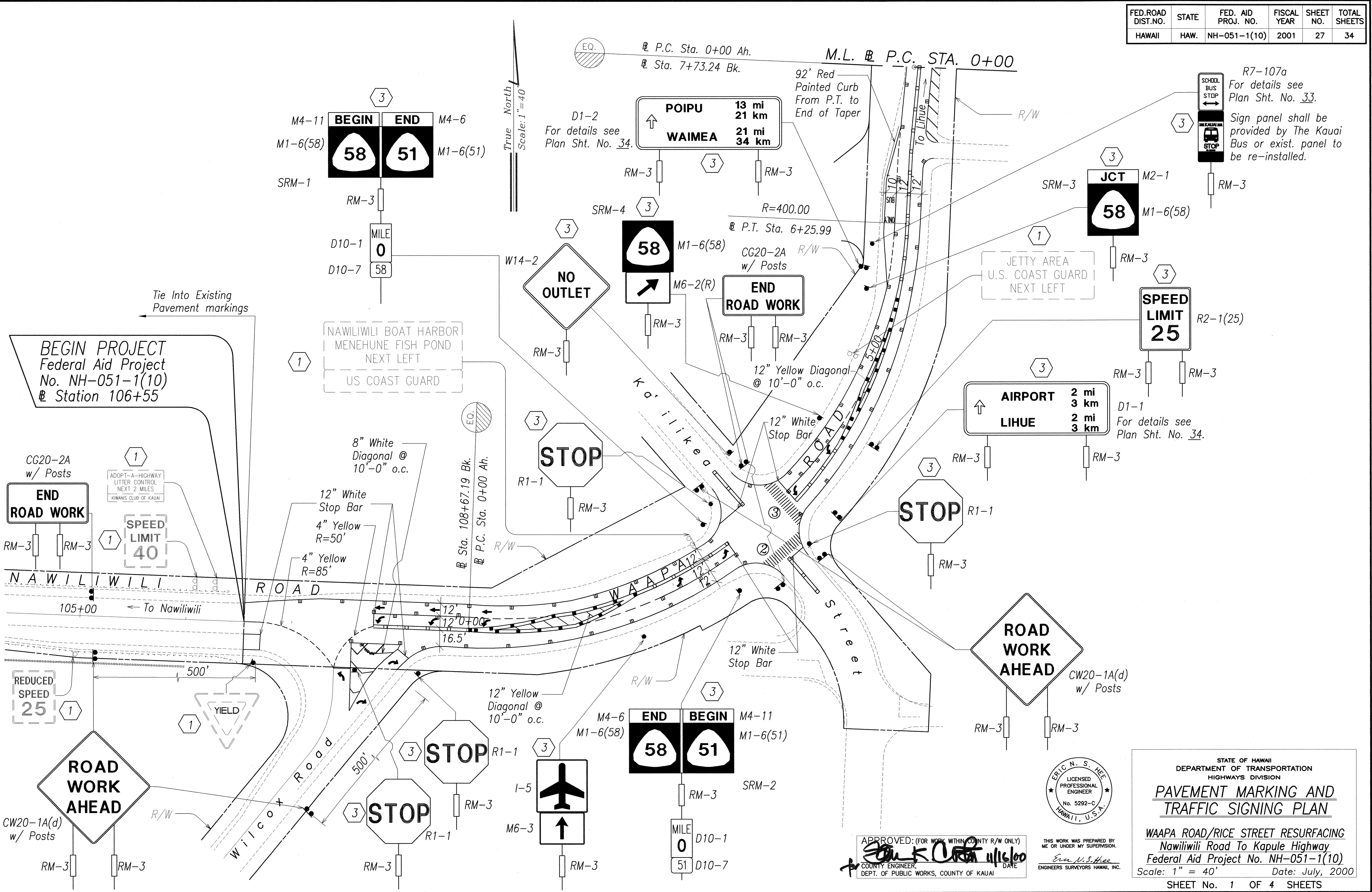
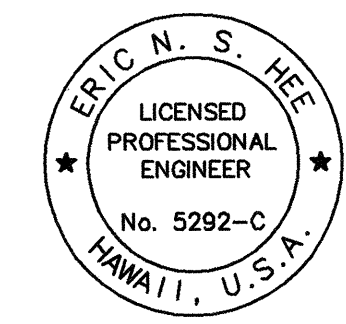


| FED. ROAD DIST. NO. | STATE | FED. AID PROJ. NO. | FISCAL YEAR | SHEET NO. | TOTAL SHEETS |
|---------------------|-------|--------------------|-------------|-----------|--------------|
| HAWAII              | HAW.  | NH-051-1(10)       | 2001        | 27        | 34           |



DATE: \_\_\_\_\_  
 SURVEY PLOTTED BY: \_\_\_\_\_  
 DRAWN BY: \_\_\_\_\_  
 TRACED BY: \_\_\_\_\_  
 CHECKED BY: \_\_\_\_\_  
 ORIGINAL PLAN No. \_\_\_\_\_  
 NOTE BOOK No. \_\_\_\_\_  
 HRS:skp01  
 No. \_\_\_\_\_



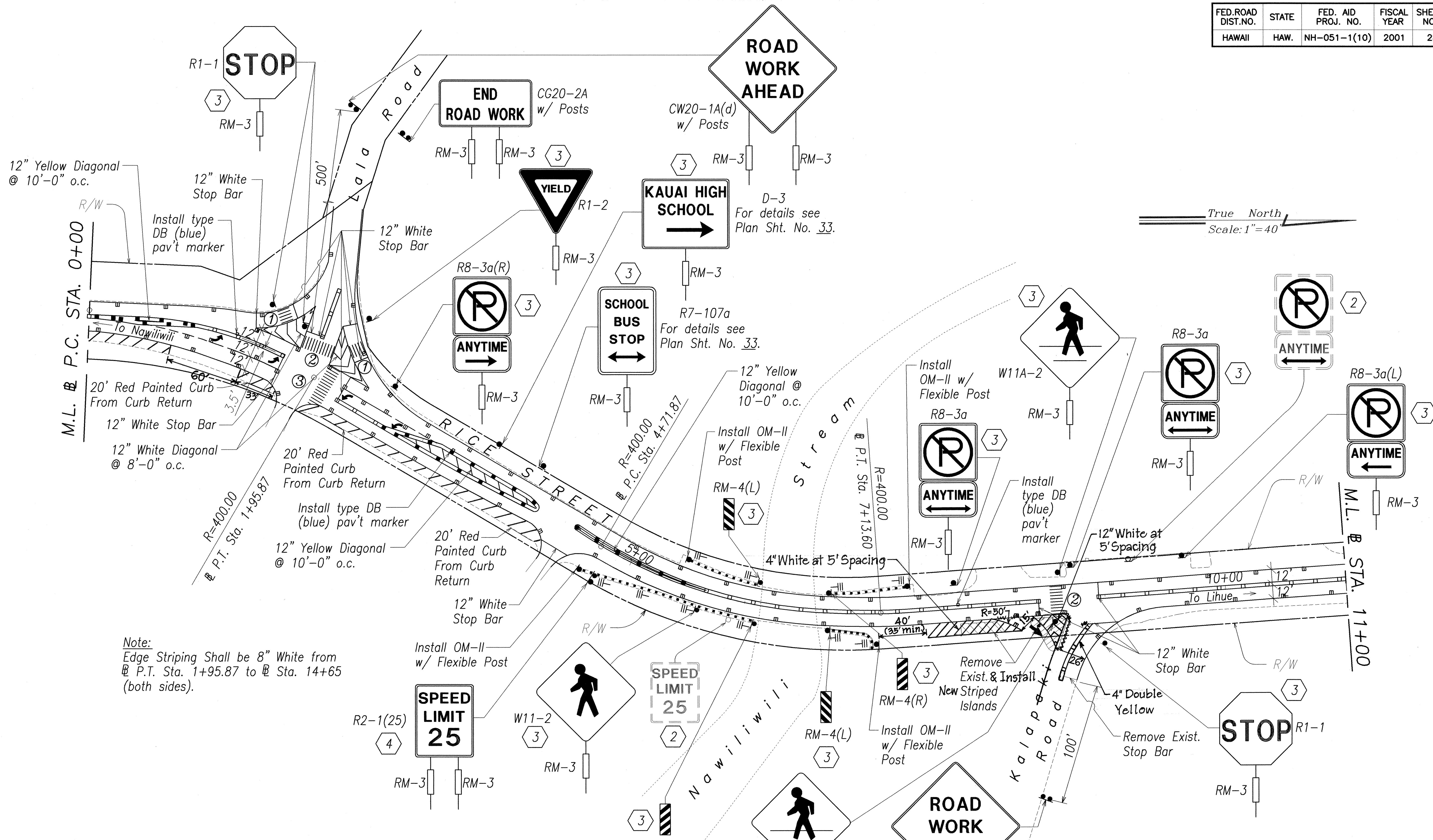
APPROVED: (FOR WORK WITHIN COUNTY R/W ONLY)  
 Eric N. S. Hee  
 COUNTY ENGINEER, DEPT. OF PUBLIC WORKS, COUNTY OF KAUAI  
 DATE: \_\_\_\_\_

THIS WORK WAS PREPARED BY ME OR UNDER MY SUPERVISION.  
 Eric N. S. Hee  
 ENGINEERS SURVEYORS HAWAII, INC.

STATE OF HAWAII  
 DEPARTMENT OF TRANSPORTATION  
 HIGHWAYS DIVISION  
**PAVEMENT MARKING AND TRAFFIC SIGNING PLAN**  
 WAAPA ROAD/RICE STREET RESURFACING  
 Nawiliwili Road To Kapule Highway  
 Federal Aid Project No. NH-051-1(10)  
 Scale: 1" = 40' Date: July, 2000  
 SHEET No. 1 OF 4 SHEETS

"AS-BUILT"

| FED. ROAD DIST. NO. | STATE | FED. AID PROJ. NO. | FISCAL YEAR | SHEET NO. | TOTAL SHEETS |
|---------------------|-------|--------------------|-------------|-----------|--------------|
| HAWAII              | HAW.  | NH-051-1(10)       | 2001        | 28        | 34           |

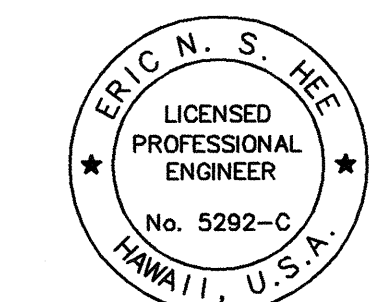


Note:  
Edge Striping Shall be 8" White from P.T. Sta. 1+95.87 to Sta. 14+65 (both sides).

True North  
Scale: 1" = 40'

|               |                   |      |
|---------------|-------------------|------|
| ORIGINAL PLAN | SURVEY PLOTTED BY | DATE |
| NOTE BOOK     | DRAWN BY          |      |
| REVISIONS     | DESIGNED BY       |      |
|               | QUANTITIES BY     |      |
|               | CHECKED BY        |      |

APPROVED: (FOR WORK WITHIN COUNTY R/W ONLY)  
  
 COUNTY ENGINEER, DEPT. OF PUBLIC WORKS, COUNTY OF KAUAI  
 DATE: 11/16/00

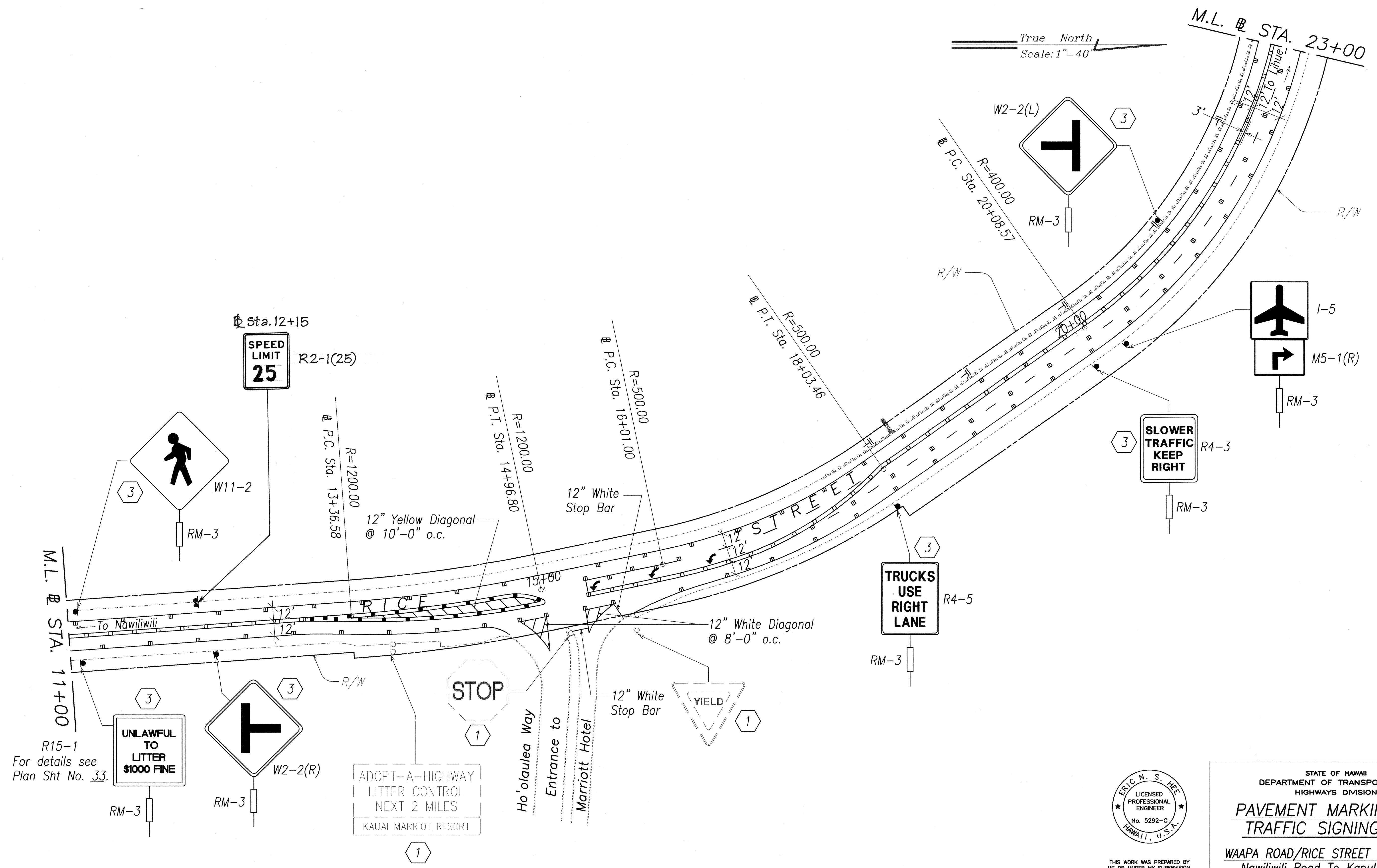


THIS WORK WAS PREPARED BY ME OR UNDER MY SUPERVISION.  
  
 ENGINEERS SURVEYORS HAWAII, INC.

STATE OF HAWAII  
 DEPARTMENT OF TRANSPORTATION  
 HIGHWAYS DIVISION  
**PAVEMENT MARKING AND TRAFFIC SIGNING PLAN**  
 WAAPA ROAD/RICE STREET RESURFACING  
 Nawiliwili Road To Kapule Highway  
 Federal Aid Project No. NH-051-1(10)  
 Scale: 1" = 40' Date: July, 2000  
 SHEET No. 2 OF 4 SHEETS

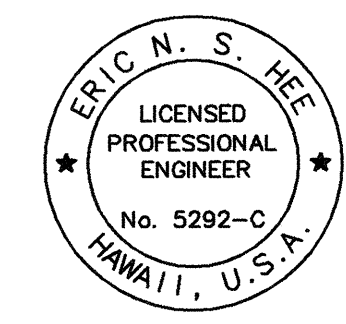
"AS-BUILT"

| FED. ROAD DIST. NO. | STATE | FED. AID PROJ. NO. | FISCAL YEAR | SHEET NO. | TOTAL SHEETS |
|---------------------|-------|--------------------|-------------|-----------|--------------|
| HAWAII              | HAW.  | NH-051-1(10)       | 2001        | 29        | 34           |



|                   |       |
|-------------------|-------|
| DATE              | _____ |
| SURVEY PLOTTED BY | _____ |
| DRAWN BY          | _____ |
| TRACED BY         | _____ |
| DESIGNED BY       | _____ |
| CHECKED BY        | _____ |
| ORIGINAL PLAN     | _____ |
| NOTE BOOK         | _____ |
| NO.               | _____ |

R15-1  
For details see  
Plan Sht No. 33.

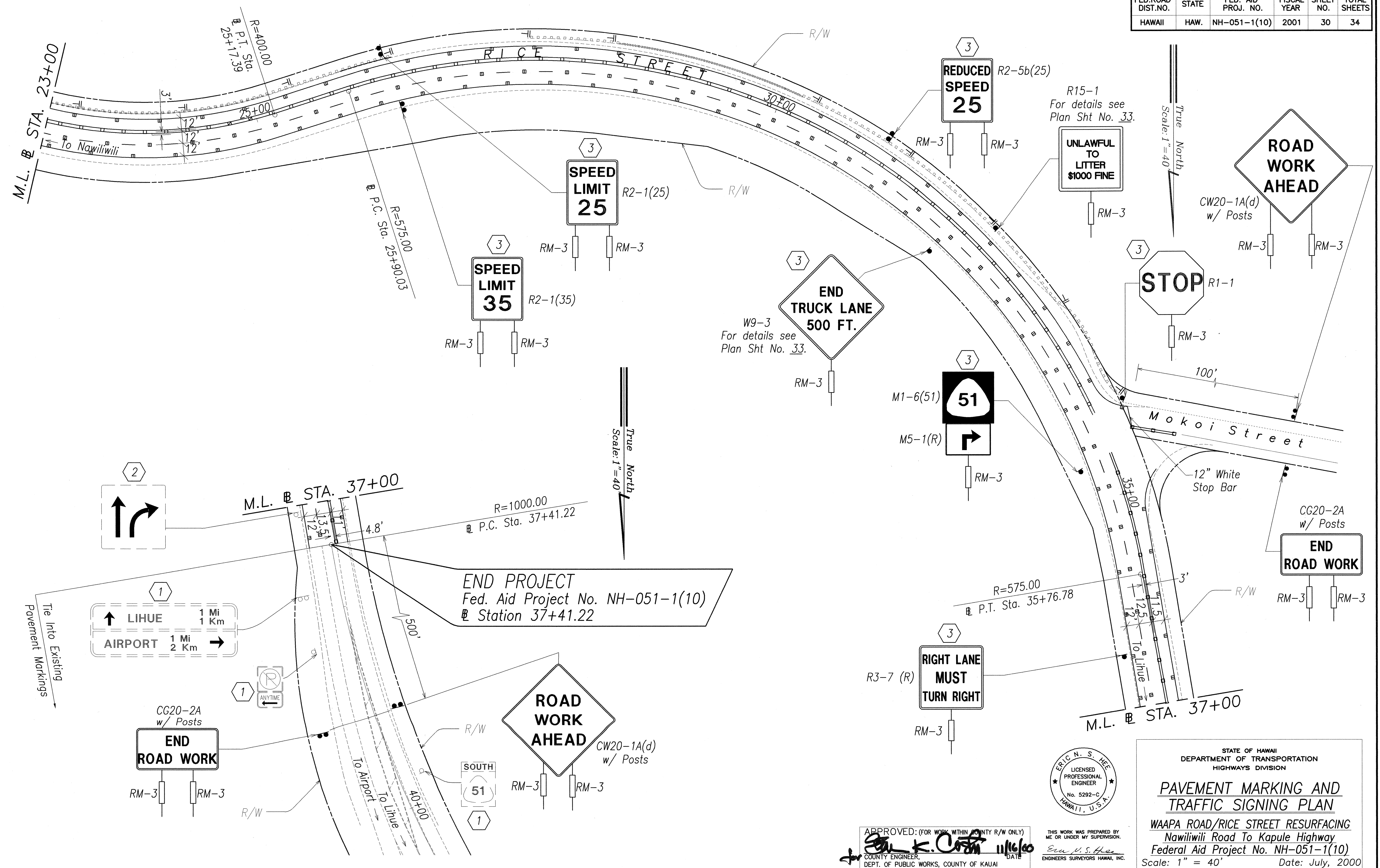


THIS WORK WAS PREPARED BY  
ME OR UNDER MY SUPERVISION.  
*Eric N. S. Hee*  
ENGINEERS SURVEYORS HAWAII, INC.

STATE OF HAWAII  
DEPARTMENT OF TRANSPORTATION  
HIGHWAYS DIVISION  
**PAVEMENT MARKING AND  
TRAFFIC SIGNING PLAN**  
WAAPA ROAD/RICE STREET RESURFACING  
Nawiliwili Road To Kapule Highway  
Federal Aid Project No. NH-051-1(10)  
Scale: 1" = 40' Date: July, 2000

"AS-BUILT"

| FED. ROAD DIST. NO. | STATE | FED. AID PROJ. NO. | FISCAL YEAR | SHEET NO. | TOTAL SHEETS |
|---------------------|-------|--------------------|-------------|-----------|--------------|
| HAWAII              | HAW.  | NH-051-1(10)       | 2001        | 30        | 34           |



|                   |      |
|-------------------|------|
| SURVEY PLOTTED BY | DATE |
| DRAWN BY          |      |
| DESIGNED BY       |      |
| QUANTITIES BY     |      |
| CHECKED BY        |      |
| ORIGINAL PLAN     |      |
| NOTE BOOK         |      |
| hms4004           |      |
| No. 159           |      |

APPROVED: (FOR WORK WITHIN COUNTY R/W ONLY)  
*[Signature]*  
 COUNTY ENGINEER, DEPT. OF PUBLIC WORKS, COUNTY OF KAUAI

ERIC N. S. HEE  
 LICENSED PROFESSIONAL ENGINEER  
 No. 5292-C  
 HAWAII, U.S.A.

THIS WORK WAS PREPARED BY ME OR UNDER MY SUPERVISION.  
*[Signature]*  
 ENGINEERS SURVEYORS HAWAII, INC.

STATE OF HAWAII  
 DEPARTMENT OF TRANSPORTATION  
 HIGHWAYS DIVISION

**PAVEMENT MARKING AND TRAFFIC SIGNING PLAN**

WAAPA ROAD/RICE STREET RESURFACING  
 Nawiliwili Road To Kapule Highway  
 Federal Aid Project No. NH-051-1(10)  
 Scale: 1" = 40' Date: July, 2000

SHEET No. 4 OF 4 SHEETS