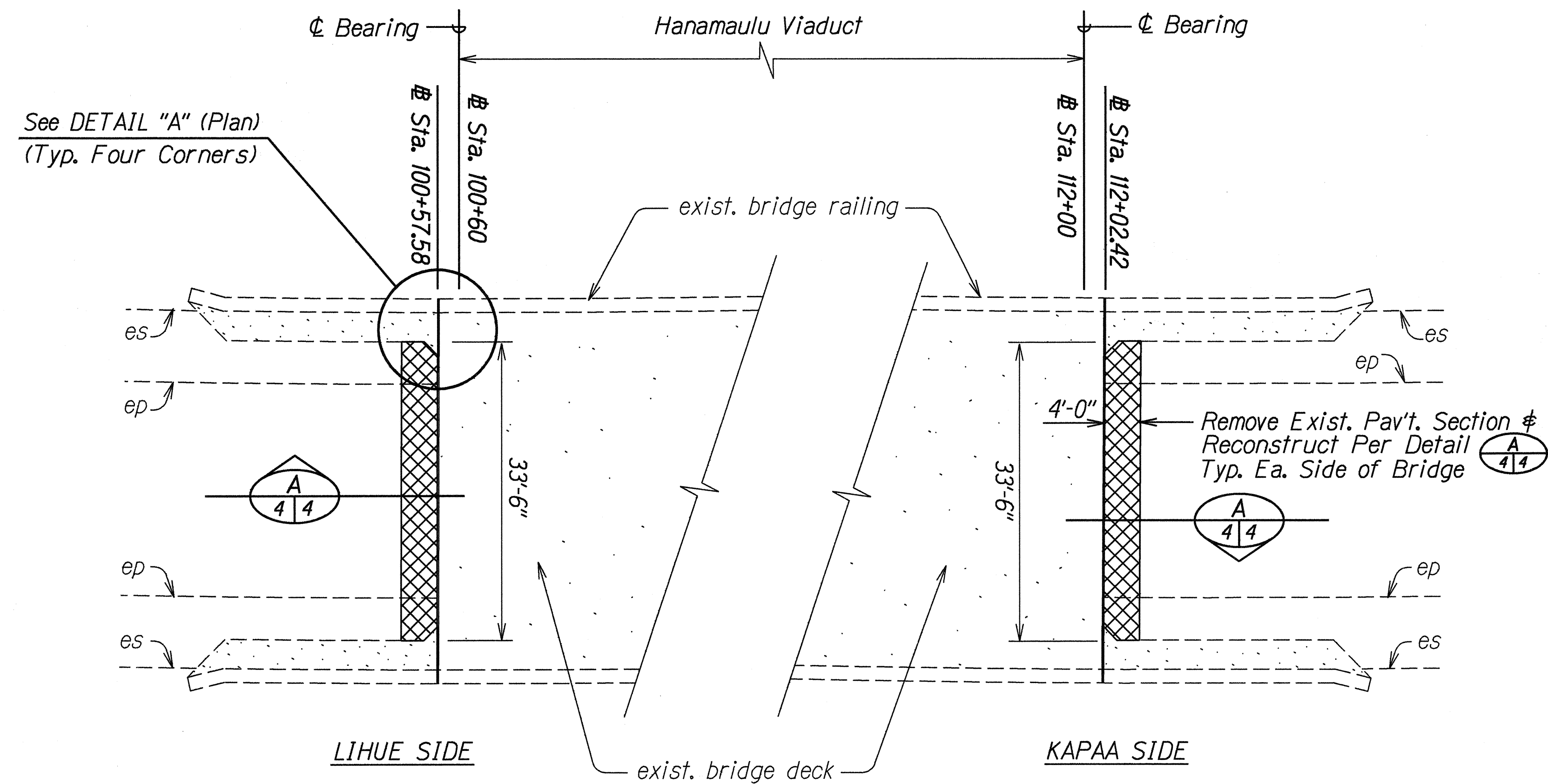
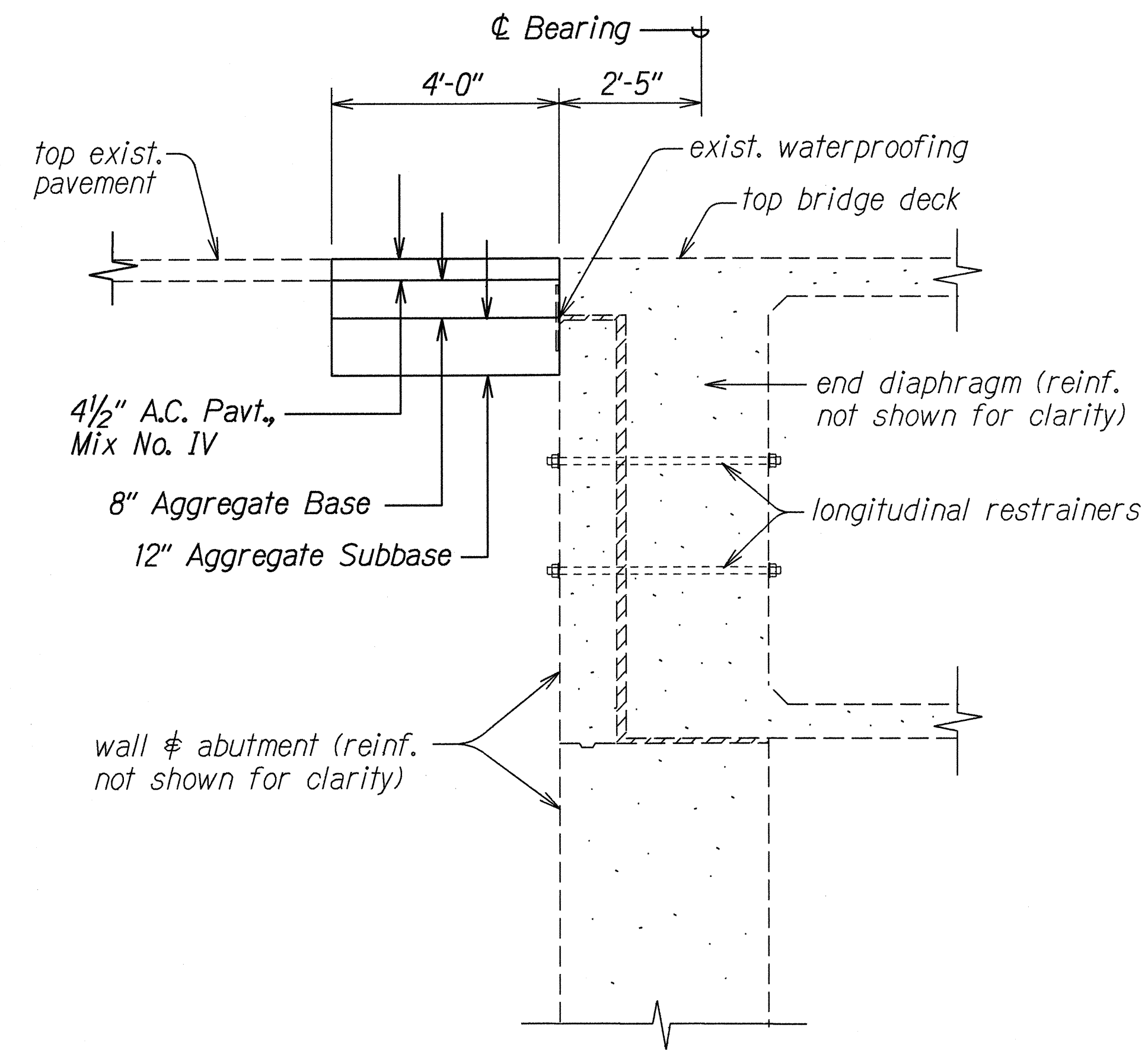


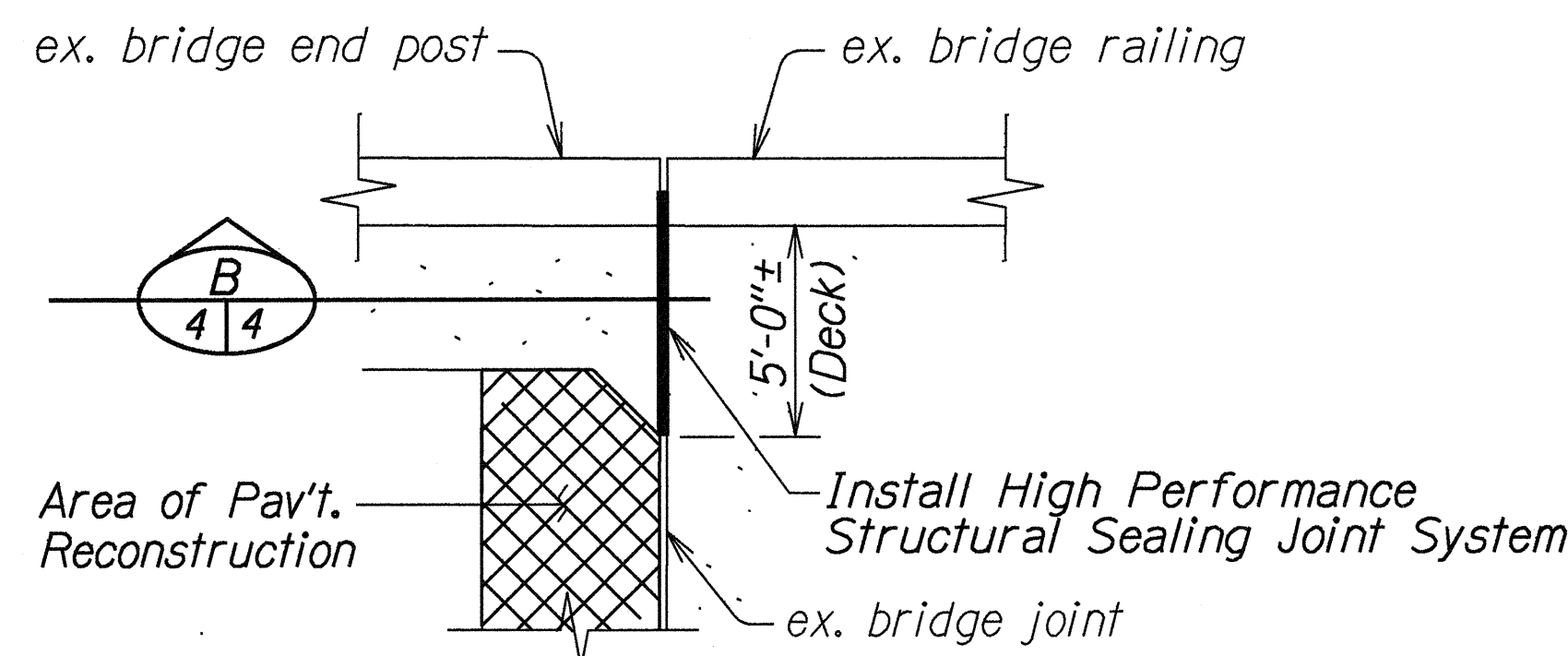
FED. ROAD DIST. NO.	STATE	PROJ. NO.	FISCAL YEAR	SHEET NO.	TOTAL SHEETS
HAWAII	HAW.	51B-01-00M	2000	4	23



PLAN
PAVEMENT RECONSTRUCTION
AT HANAMAULU VIADUCT APPROACHES
Scale: 1" = 10'-0"

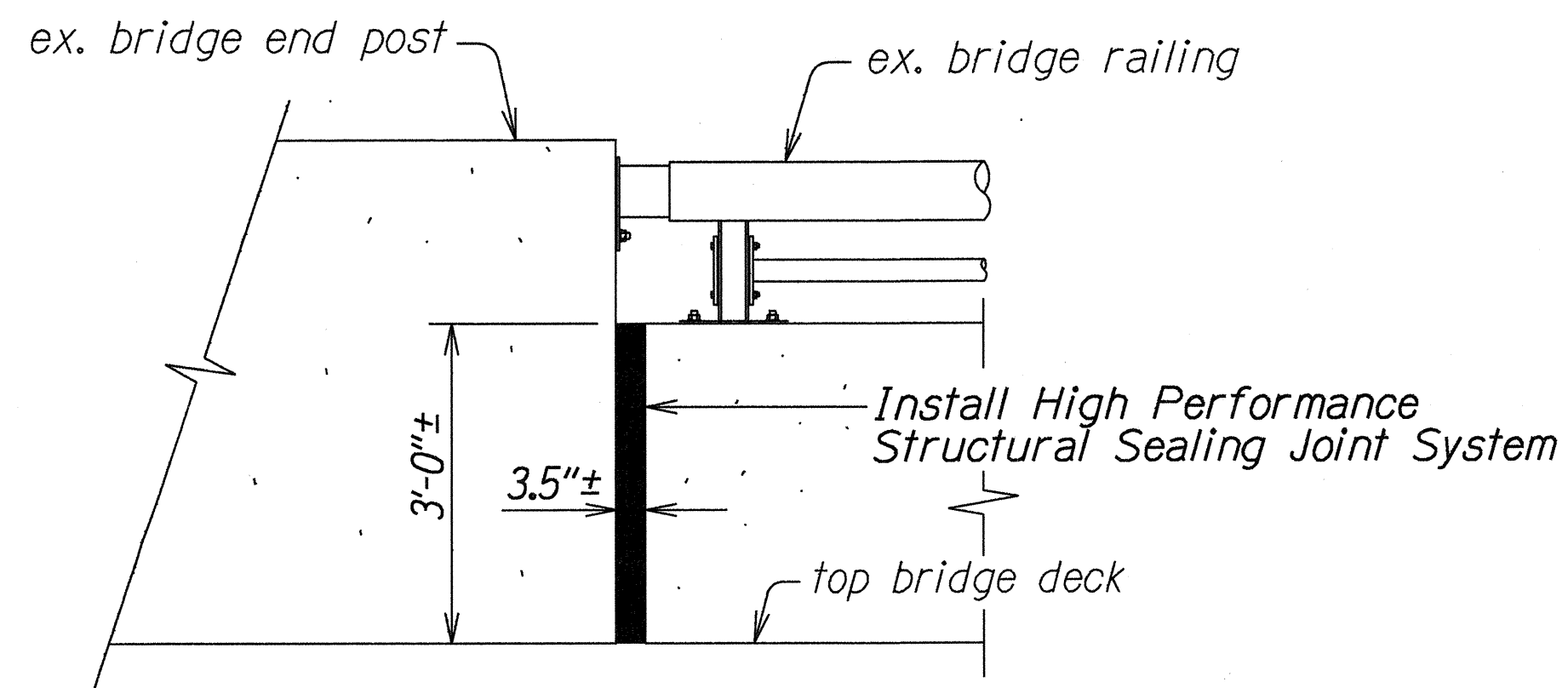


SECTION
Scale: 1" = 2' A 4/4



DETAIL "A" (PLAN)
Scale: 1/4" = 1'-0"

- NOTES:
1. Joint sealing material shall be Neoprene Profile (synthetic rubber), designed and manufactured by Jeene Technology and marketed through Harris Specialty Chemicals, Inc. of Jacksonville, Florida (Tel. No. 904-996-6000), and distributed by Watson Bowman Acme of Buffalo, New York (Tel. No. 716-691-7566).
 2. Expansion joint system shall be installed in strict accordance with the manufacturer's recommendations or instructions.
 3. Existing joint shall be cleaned as specified by the joint manufacturer prior to installation of joint sealing system.



SECTION
Not to Scale B 4/4

STATE OF HAWAII
DEPARTMENT OF TRANSPORTATION
HIGHWAYS DIVISION

PAVEMENT RECONSTRUCTION
JOINT SEALING DETAILS
KAPULE HIGHWAY, MISC. IMPROVEMENTS
Vicinity of Ahukini Road to Kuhio Highway
Project No. 51B-01-00M
Scale: As Shown Date: December, 1999
SHEET No. 1 OF 2 SHEETS

ORIGINAL PLAN	SURVEY PLOTTED BY	DATE
PLAN	DRAWN BY H. AGO	12-15-99
NOTE BOOK	CHECKED BY B. AGO	
4/20/00	QUANTITIES BY	
4/20/00	CHECKED BY	