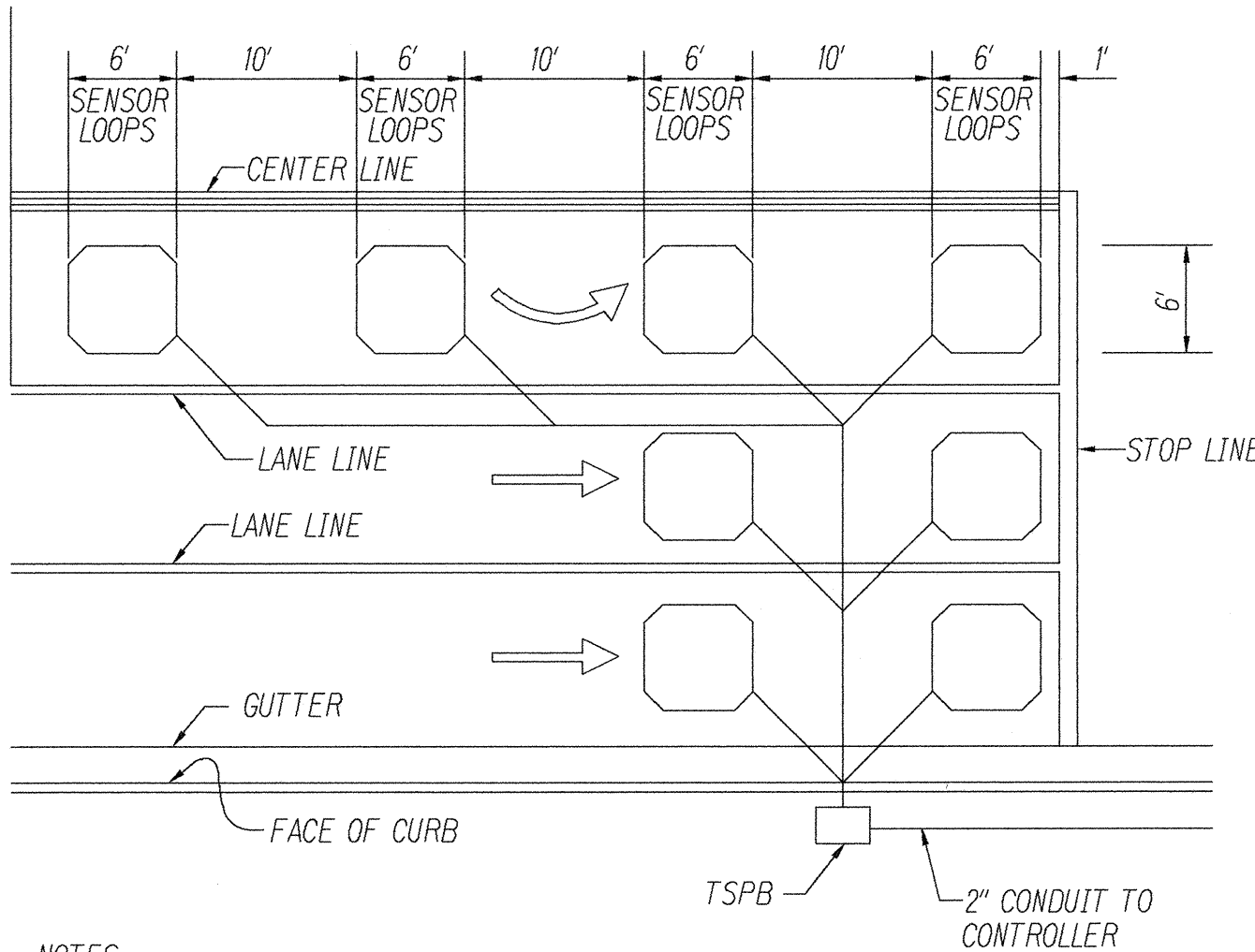


FED. ROAD DIST. NO.	STATE	FED. AID PROJ. NO.	FISCAL YEAR	SHEET NO.	TOTAL SHEETS
HAWAII	HAW.	STP-051-K(20)	2000	23	27

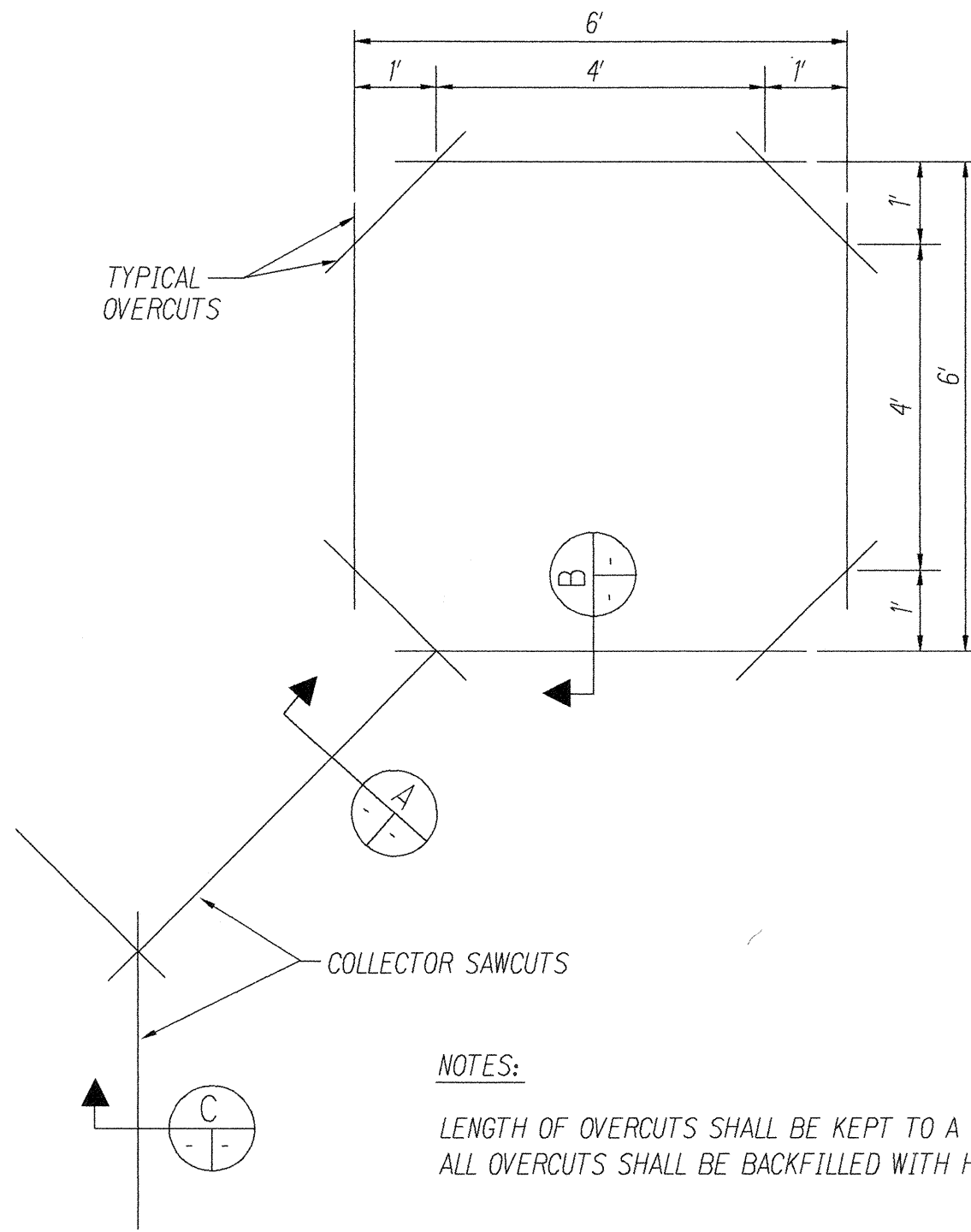


NOTES:

1. CENTER SENSOR LOOPS IN LANES.
2. COLLECTOR CABLES SHALL BE TWISTED 2 TURNS PER FOOT.
3. NUMBER OF LOOPS AND LOCATIONS VARY. SEE PROJECT PLANS.
4. NUMBER AND LOCATIONS OF COLLECTOR SAWCUTS MAY BE VARIED IN THE FIELD TO SUIT.

TYPICAL SENSOR LOOP LAYOUT

NOT TO SCALE

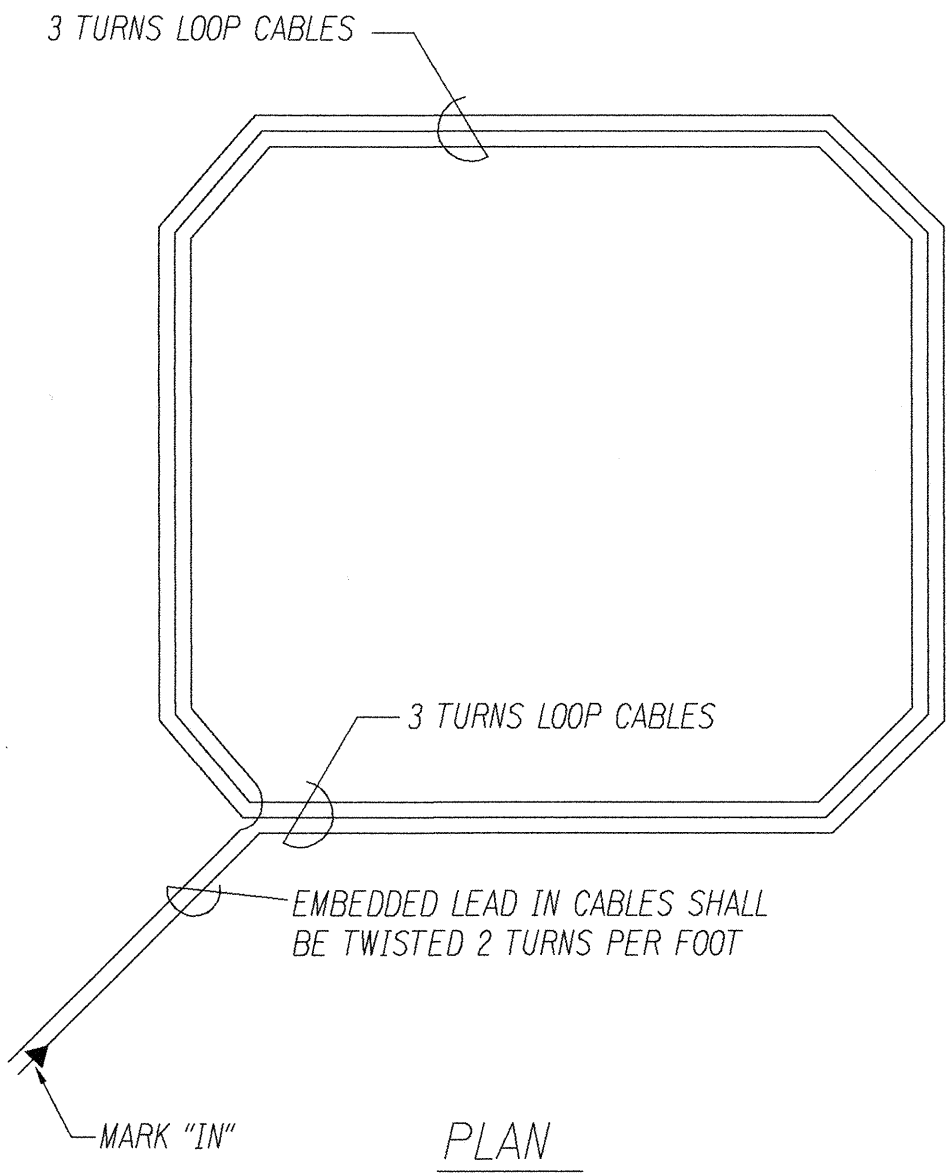


NOTES:

1. LENGTH OF OVERCUTS SHALL BE KEPT TO A MINIMUM.
2. ALL OVERCUTS SHALL BE BACKFILLED WITH HOT TAR.

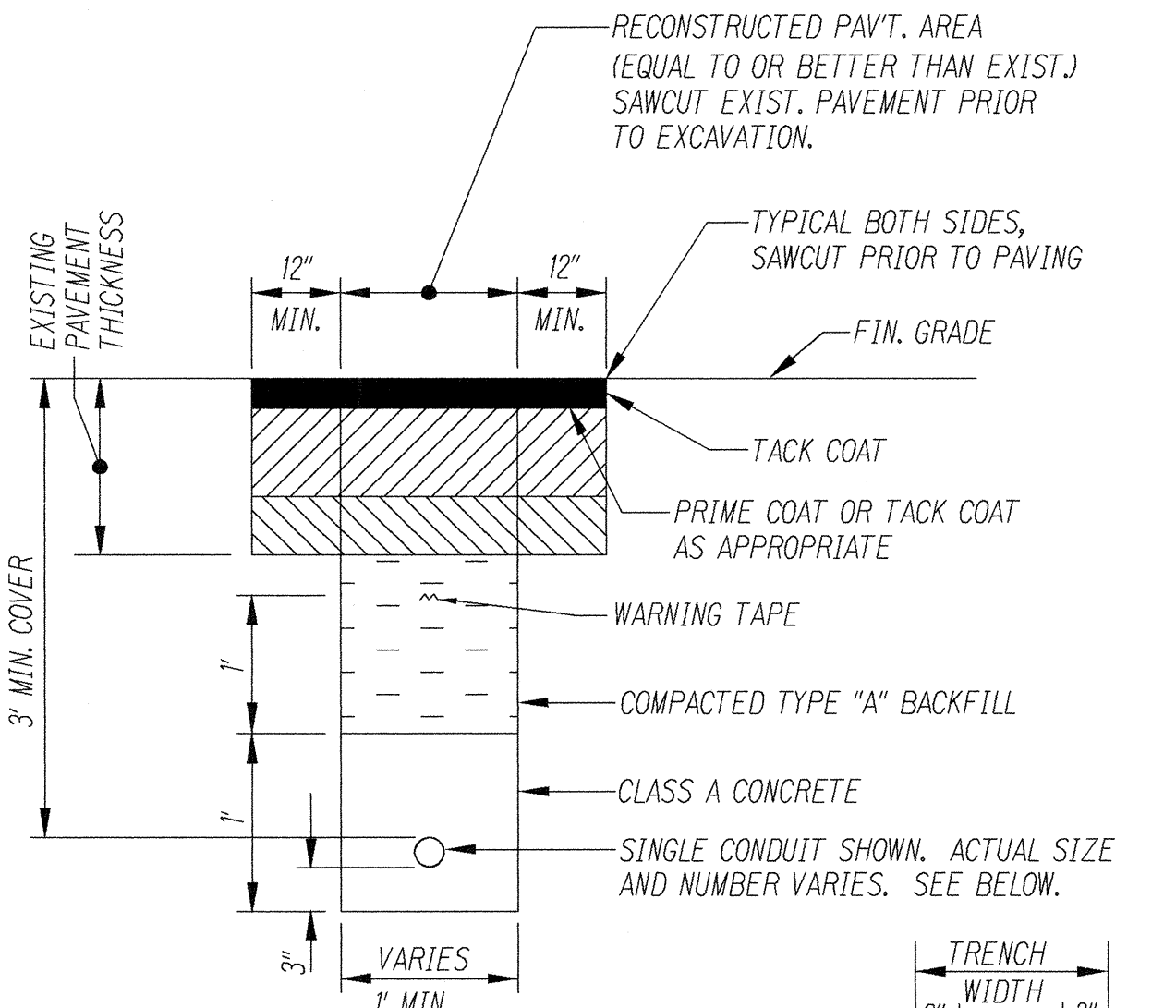
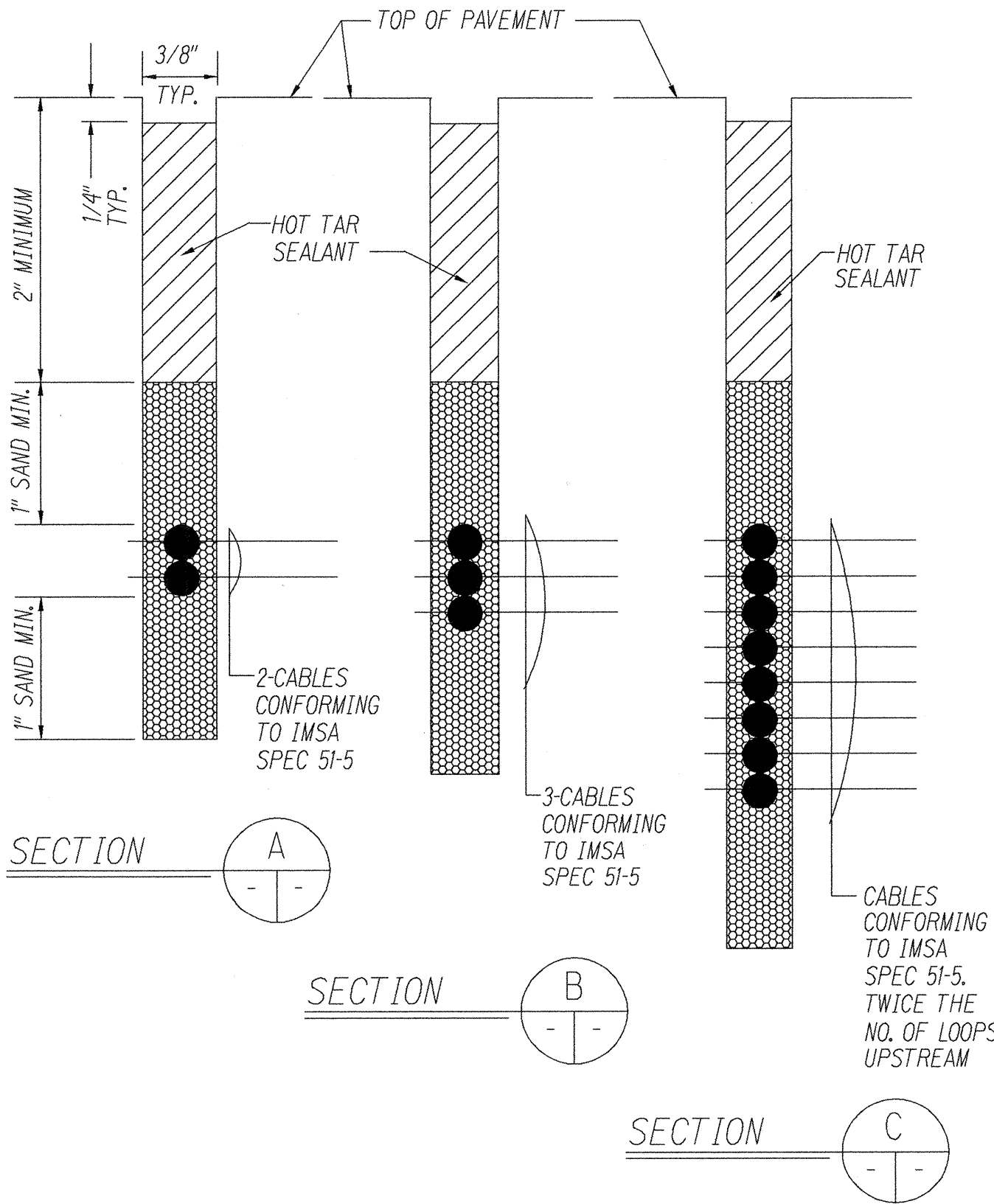
TYPICAL SENSOR LOOP SAWCUT DETAIL

NOT TO SCALE



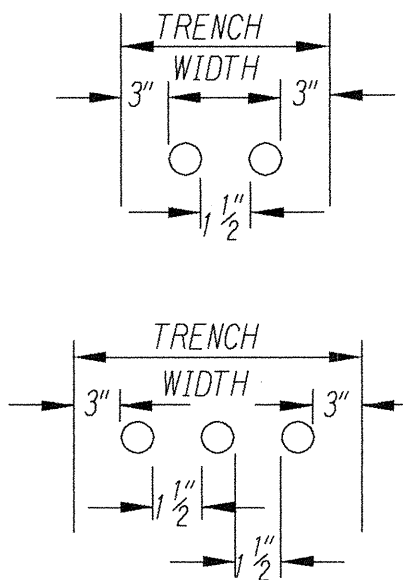
TYPICAL SENSOR LOOP WIRING DIAGRAM

NOT TO SCALE



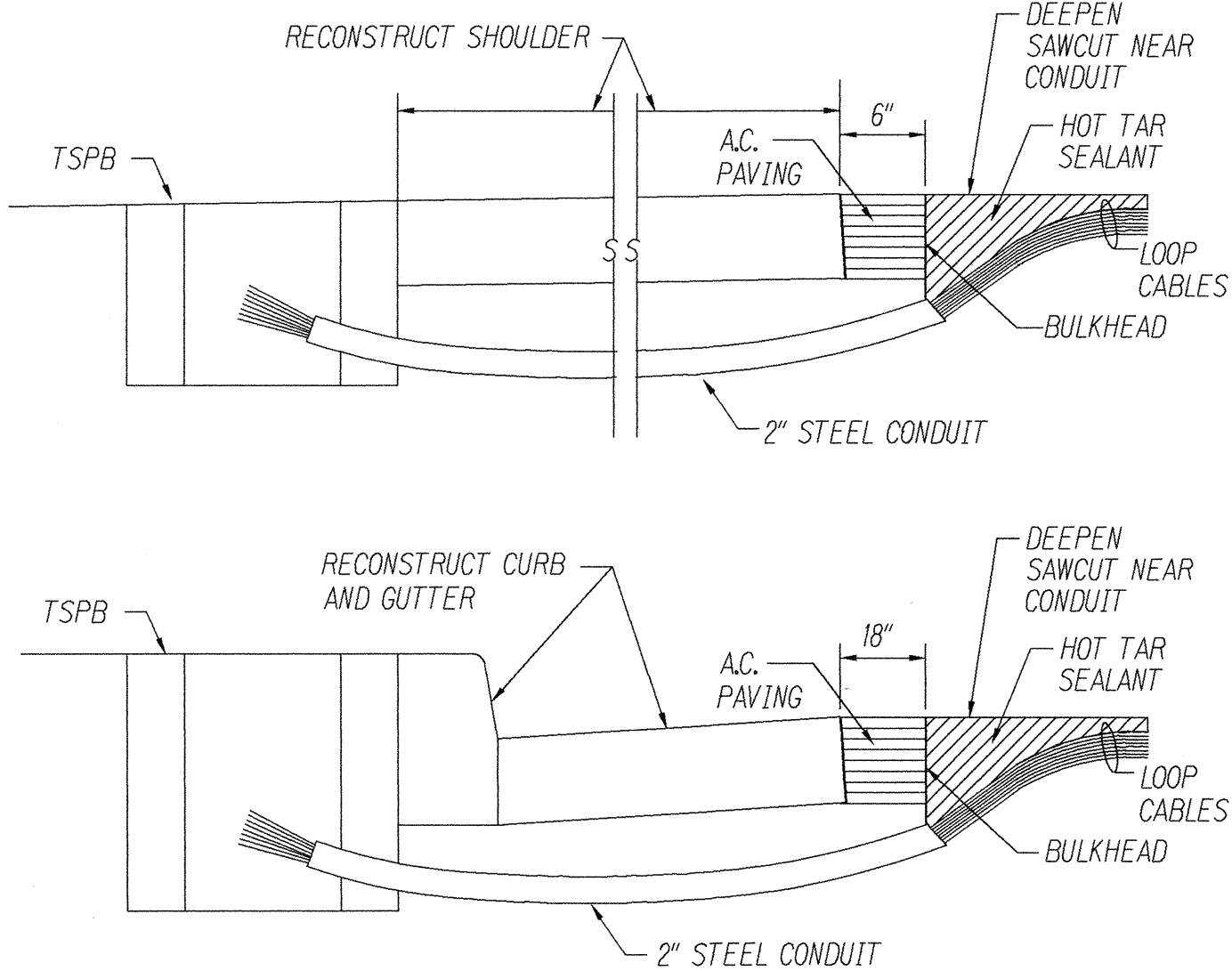
NOTES:

1. DETAIL FOR MULTIPLE CONDUIT TRENCHES SHALL BE SIMILAR. PROVIDE 1 1/2" MIN. CLEAR SPACING BETWEEN CONDUITS.



TYPICAL TRENCH DETAIL

NOT TO SCALE

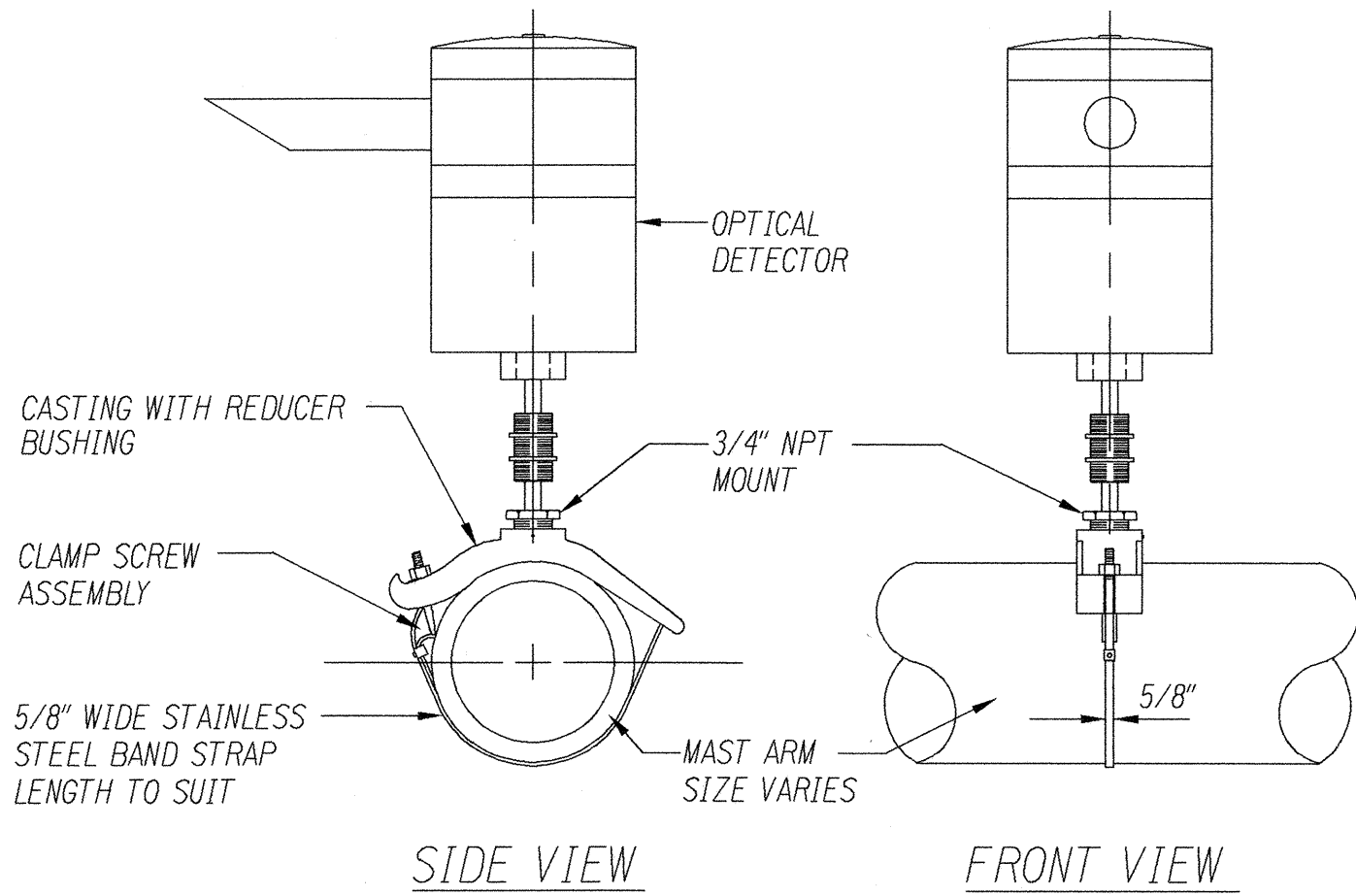


NOTES ON CONSTRUCTION AT END OF SAWCUT

1. SEAL ROADWAY END OF CONDUIT AFTER INSTALLATION OF CONDUCTORS.
2. INSTALL BULKHEAD ACROSS CONDUIT TRENCH.
3. PLACE HOT TAR IN SAWCUT.
4. BACKFILL OVER CONDUIT WITH NEW AC.
5. RECONSTRUCT CURB AND GUTTER AS REQUIRED.

DETAIL OF SENSOR LOOP INSTALLATION AT EDGE OF ROADWAY

NOT TO SCALE



NOTES:

1. OPTICAL DETECTOR SHALL BE "OPTICOM M711 OPTICAL DETECTOR", OR APPROVED EQUAL, UNLESS NOTED OTHERWISE IN THE SPECIAL PROVISIONS.
2. SUPPORT SADDLE ASSEMBLY SHALL BE "ASTRO MINI-BRAC, AB-0132-29", OR APPROVED EQUAL, UNLESS NOTED OTHERWISE IN THE SPECIAL PROVISIONS.

OPTICAL DETECTOR FOR

MAST ARM MOUNTING

NOT TO SCALE

STATE OF HAWAII

DEPARTMENT OF TRANSPORTATION

HIGHWAYS DIVISION

MISCELLANEOUS DETAILS

KAPULE HIGHWAY,  
INTERSECTION IMPROVEMENTS  
AT AHUKINI ROAD

Federal Aid Project No. STP-051-K(20)

Scale: NoneDate: July, 1999

SHEET No. 1 OF 1 SHEETS

SURVEY PLOTTED BY	DATE
DRAWN BY	DATE
DESIGNED BY	DATE
QUANTITIES BY	DATE
CHECKED BY	DATE
ORIGINAL PLAN	
NOTE BOOK	
N.	