

NOTES:

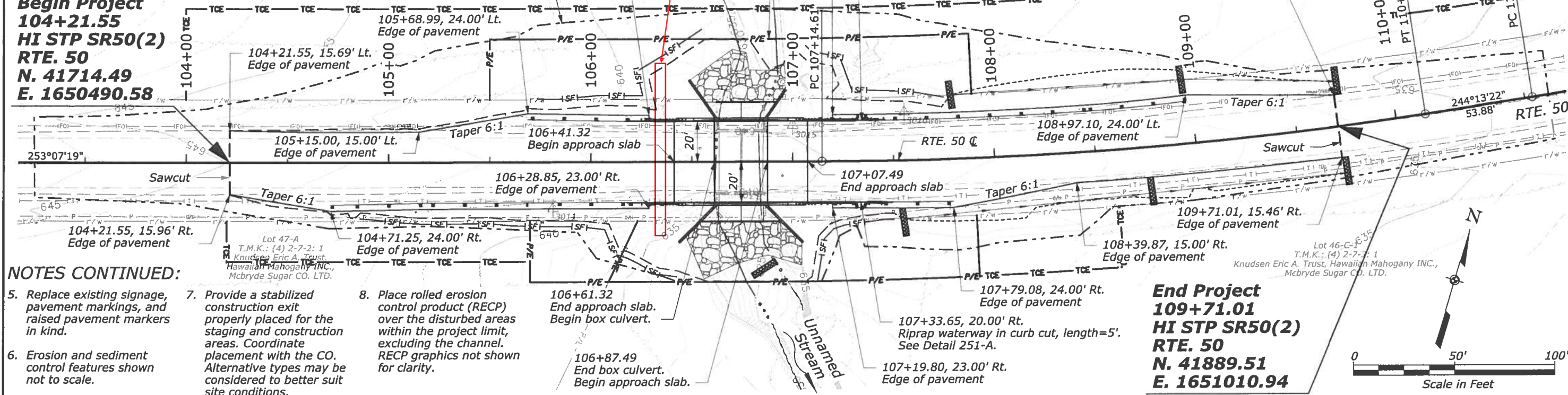
1. See S Series for bridge plan, profile and details.
2. See G Series for riprap limit and sizes.
3. See T Series for Guardrail Plan.
4. See Roadway Bypass Plan and Profile sheets for Mauka utility information.

Begin Project
104+21.55
HI STP SR50(2)
RTE. 50
N. 41714.49
E. 1650490.58

Curve = C01
 PI = 108+64.89
 $\Delta = 8^{\circ}35'40''$ (LT)
 R = 2000.00'
 T = 150.28'
 L = 300.00'

Lot 397
 T.M.K.: (4) 2-7-1: 4
 Green Energy Team LLC, Hawaiian Mahogany INC.,
 McBryde Sugar CO. LTD.

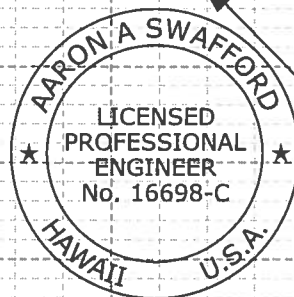
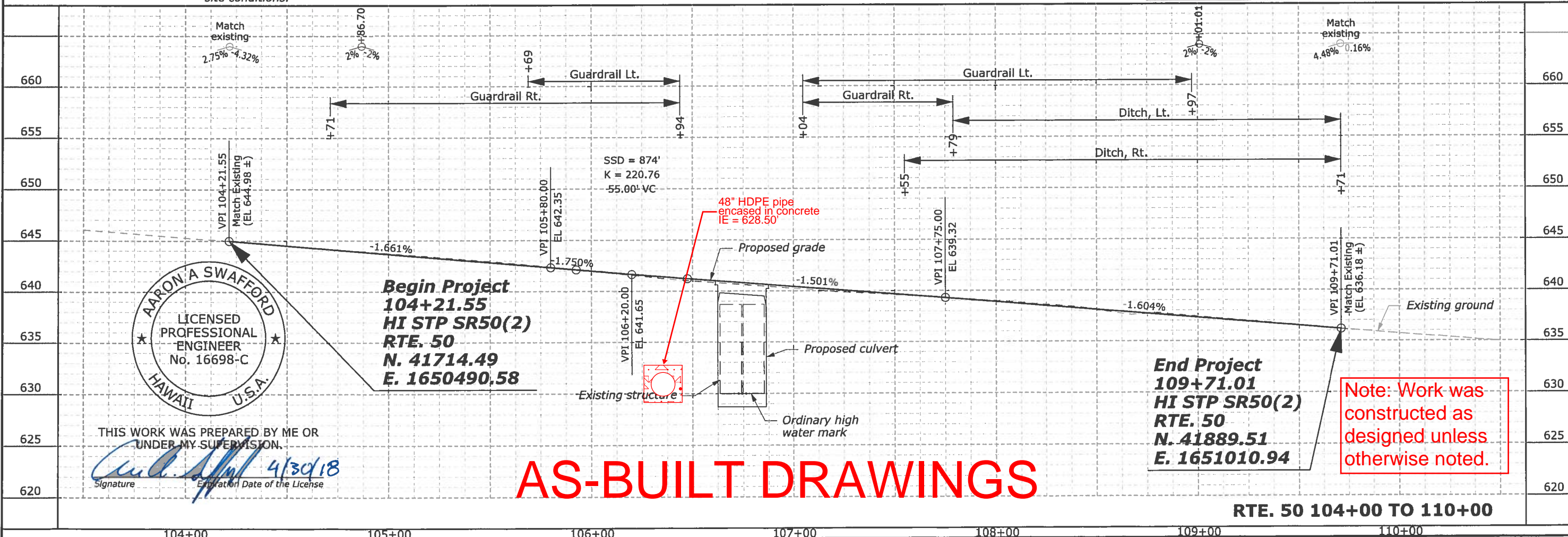
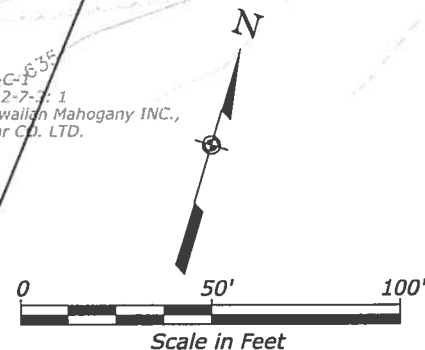
STATE	PROJECT	SHEET NO.
HI	HI STP SR50(2)	C1



NOTES CONTINUED:

5. Replace existing signage, pavement markings, and raised pavement markers in kind.
6. Erosion and sediment control features shown not to scale.
7. Provide a stabilized construction exit properly placed for the staging and construction areas. Coordinate placement with the CO. Alternative types may be considered to better suit site conditions.
8. Place rolled erosion control product (RECP) over the disturbed areas within the project limit, excluding the channel. RECP graphics not shown for clarity.

End Project
109+71.01
HI STP SR50(2)
RTE. 50
N. 41889.51
E. 1651010.94



THIS WORK WAS PREPARED BY ME OR
 UNDER MY SUPERVISION.

Signature: *[Signature]* 4/30/18
 Expiration Date of the License

AS-BUILT DRAWINGS

RTE. 50 104+00 TO 110+00