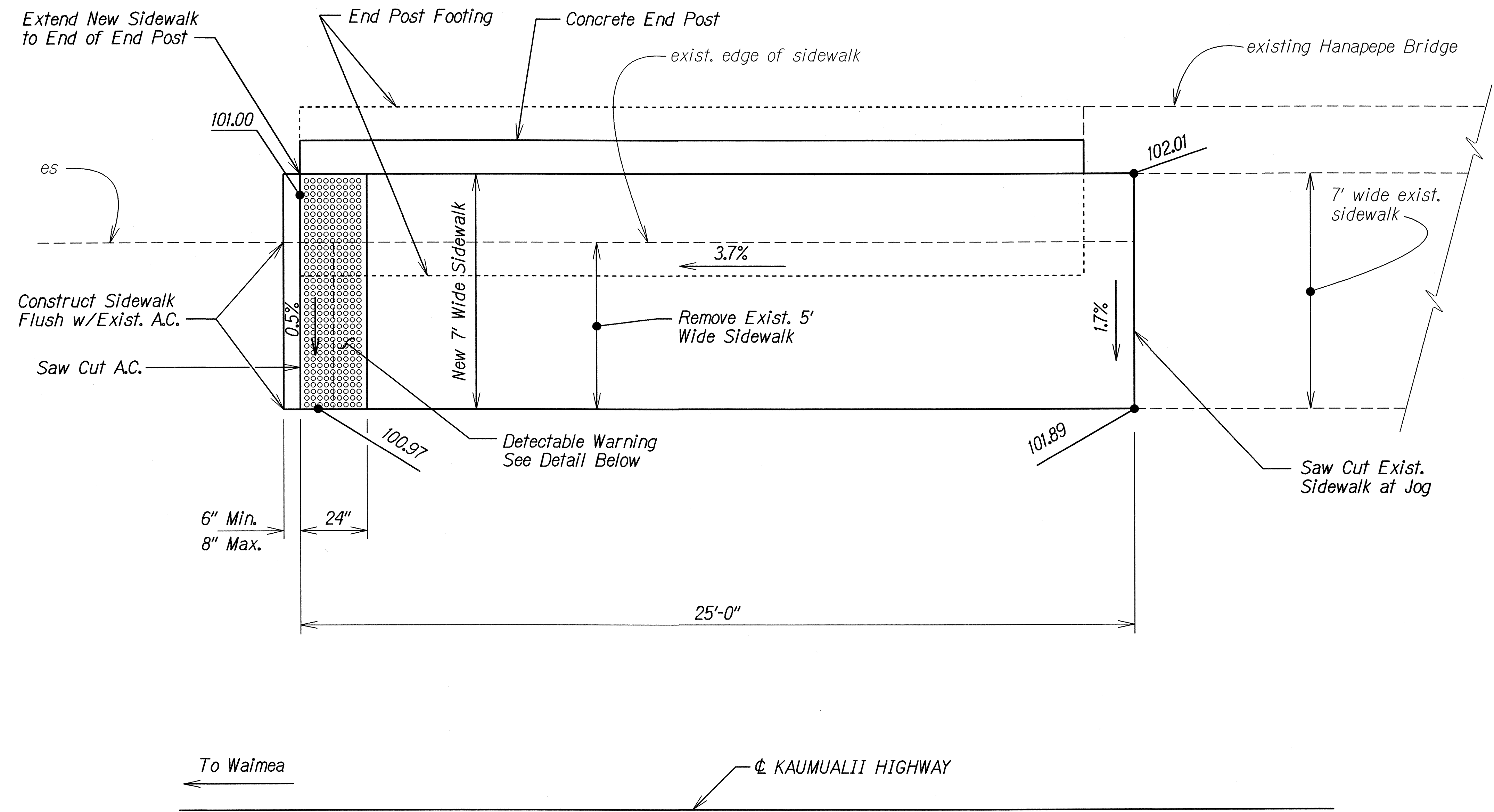
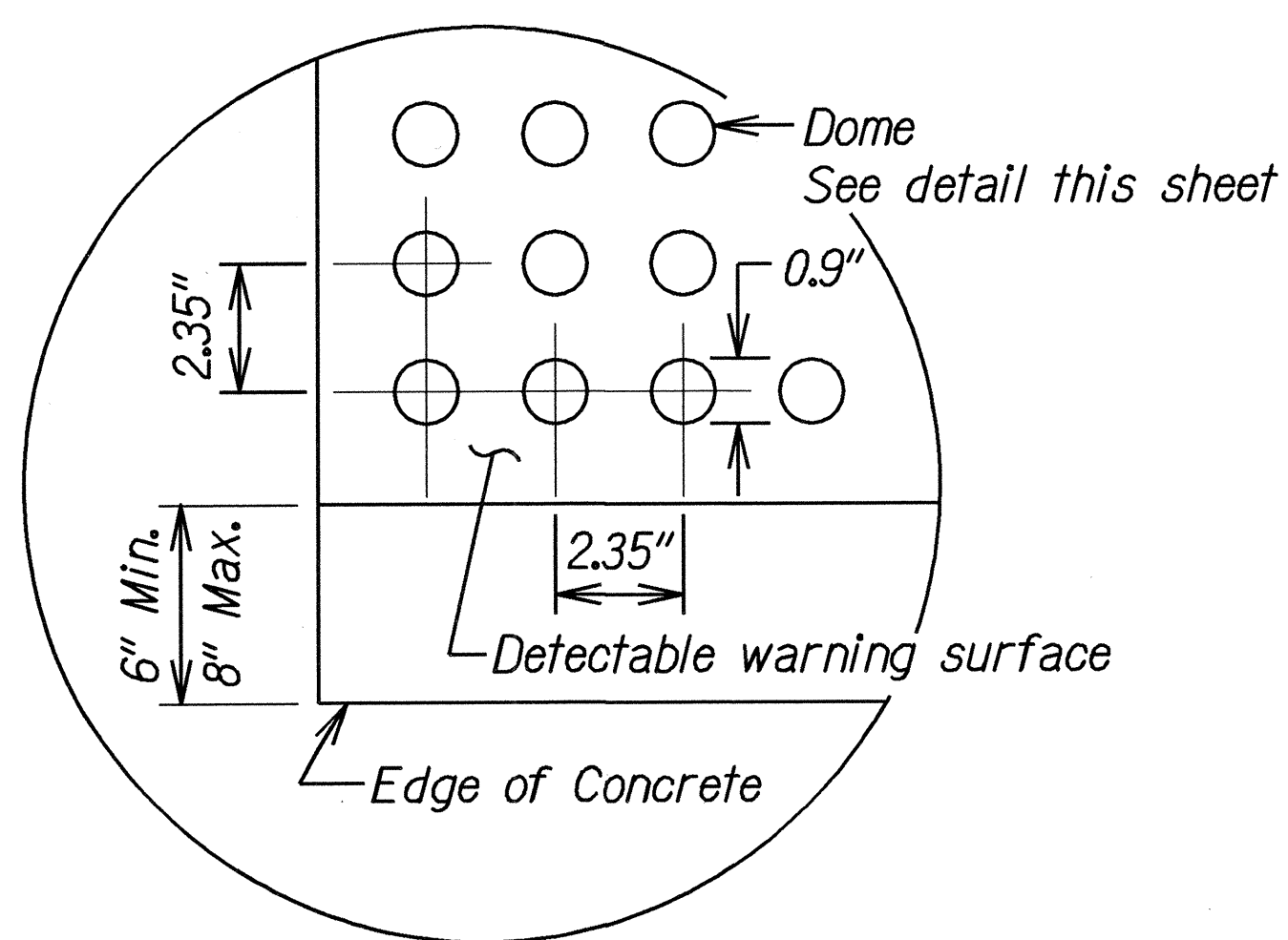


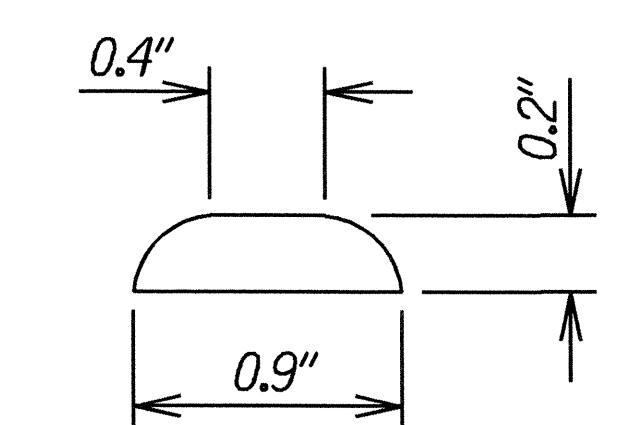
FED. ROAD DIST. NO.	STATE	FED. AID PROJ. NO.	FISCAL YEAR	SHEET NO.	TOTAL SHEETS
HAWAII	HAW.	STP-050-1(27)	2005	18	27



SIDEWALK PLAN
Scale: 1" = 2'



ENLARGEMENT



DOMES SECTION

DETECTABLE WARNING DETAIL

Not to Scale

DETECTABLE WARNING NOTES:

1. Truncated domes shall have a diameter of 0.9 inch at the bottom, a diameter of 0.4 inch at the top, a height of 0.2 inch and a center-to-center spacing of 2.35 inches measured along one side of a square arrangement.
2. Domes shall be aligned on a square grid in the predominant direction of travel to permit wheels to roll between the domes.
3. There shall be a minimum of 70 percent contrast in light reflectance between the detectable warning and an adjoining surface, or the detectable warning shall be "safety yellow".
4. The material used to provide visual contrast shall be an integral part of the detectable warning surface.
5. Installation of Detectable warning shall be considered incidental to sidewalk repair.

ORIGINAL PLAN	DATE
SURVEY PLOTTED BY	6/04
DRAWN BY	
TRACED BY	
CHECKED BY	
NOTED BY	
QUANTITIES BY	
CHECKED BY	

STATE OF HAWAII
DEPARTMENT OF TRANSPORTATION
HIGHWAYS DIVISION

SIDEWALK REPAIR DETAIL
KAUMUALII HIGHWAY
Guardrail and Shoulder Improvements
at Hanapepe Bridge
Federal Aid Project No. STP-050-1(27)
Scale: As Noted Date: Nov. 2004

SHEET No. 1 OF 1 SHEETS