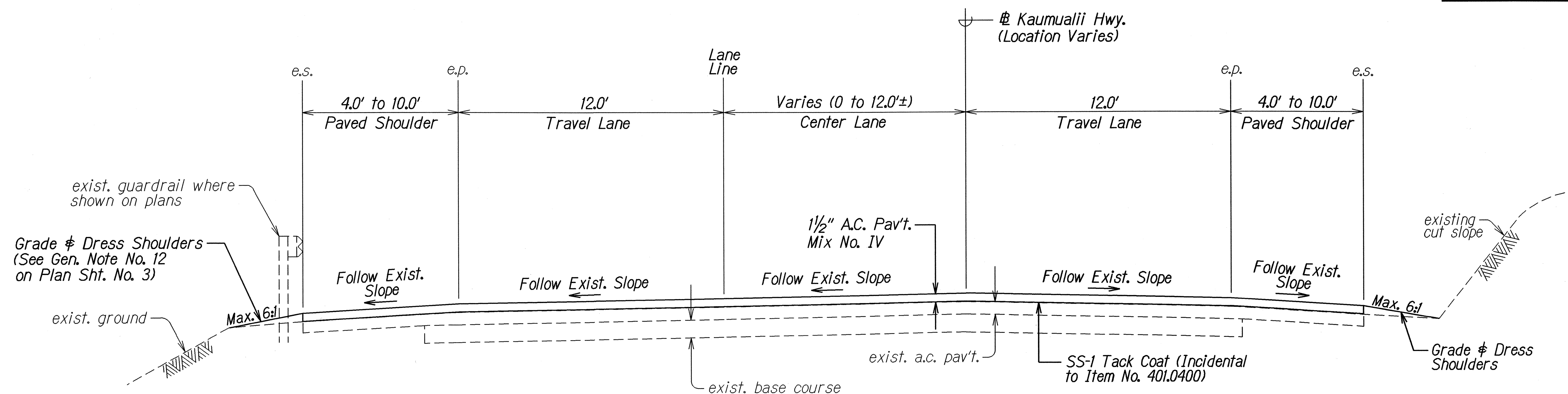
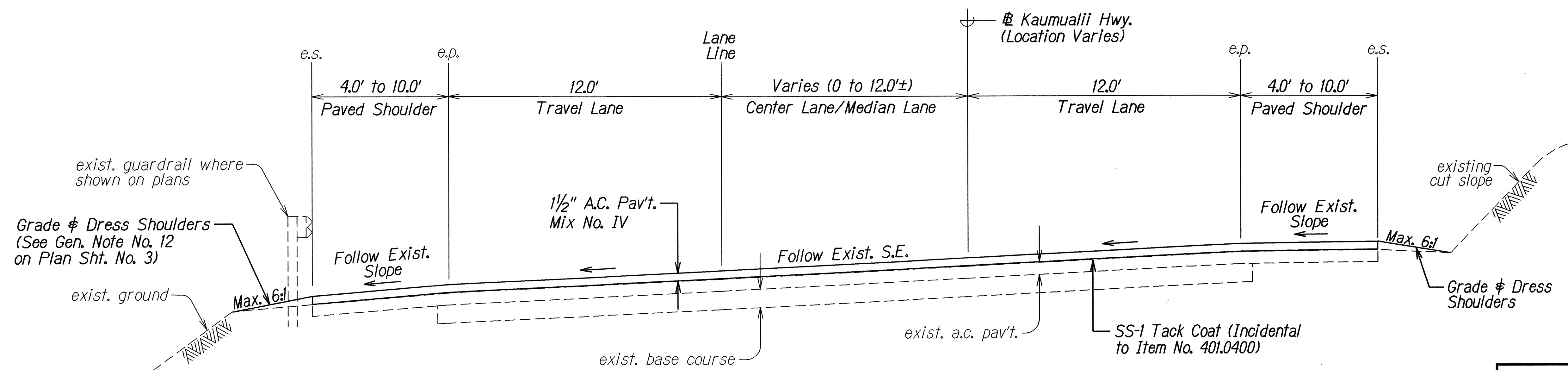


| FED. ROAD DIST. NO. | STATE | PROJ. NO. | FISCAL YEAR | SHEET NO. | TOTAL SHEETS |
|---------------------|-------|-------------|-------------|-----------|--------------|
| HAWAII | HAW. | 50DE-01-05M | 2005 | 6 | 39 |



TYPICAL TANGENT SECTION (RESURFACING, NO COLD PLANING)

Scale: $\frac{3}{8}" = 1'-0"$



TYPICAL SUPERELEVATED SECTION (RESURFACING, NO COLD PLANING)

Scale: $\frac{3}{8}" = 1'-0"$

| | | |
|-------------------|------|------|
| ORIGINAL PLAN | DATE | 9/04 |
| SURVEY PLOTTED BY | | |
| DRAWN BY | | |
| NOTED BY | | |
| CHECKED BY | | |

STATE OF HAWAII
DEPARTMENT OF TRANSPORTATION
HIGHWAYS DIVISION

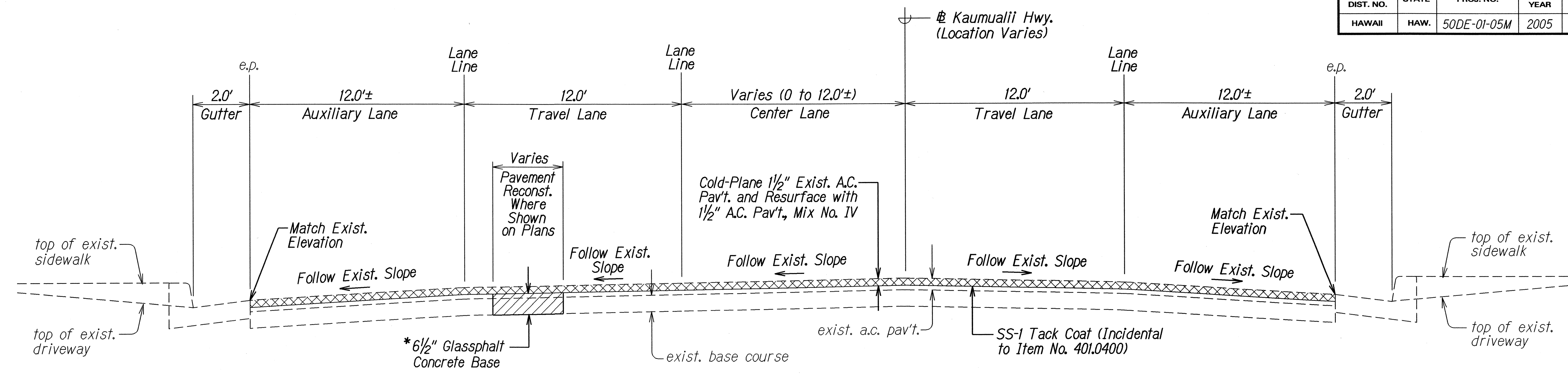
TYPICAL SECTIONS

KAUMUALII HIGHWAY RESURFACING
Lihue Mill Bridge to Puhi Road
Project No. 50DE-01-05M

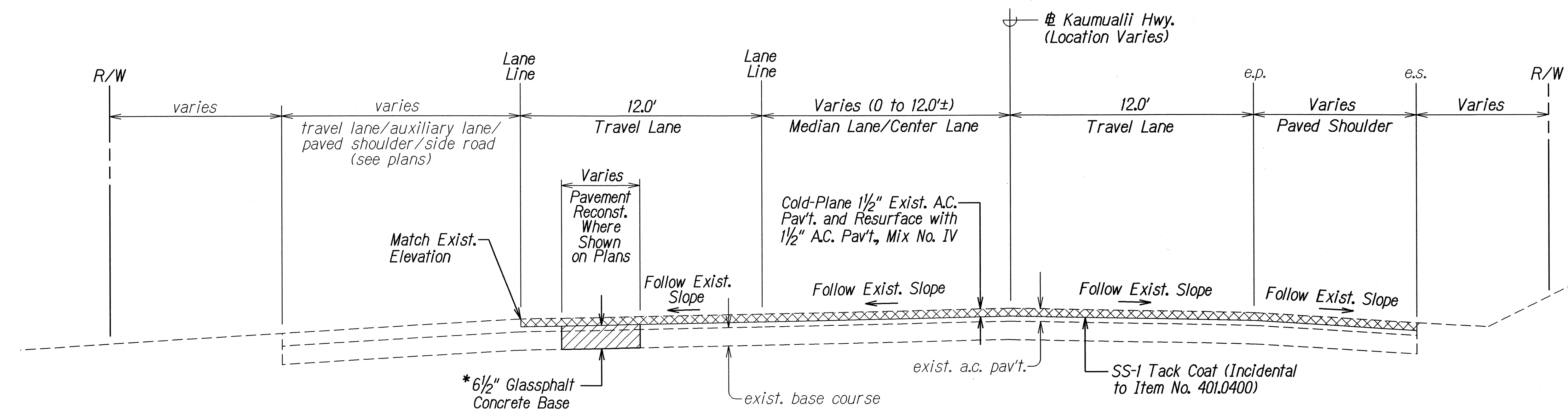
Scale: As Shown Date: January 2005

SHEET No. 1 OF 6 SHEETS

| FED. ROAD DIST. NO. | STATE | PROJ. NO. | FISCAL YEAR | SHEET NO. | TOTAL SHEETS |
|---------------------|-------|-------------|-------------|-----------|--------------|
| HAWAII | HAW. | 50DE-01-05M | 2005 | 7 | 39 |



**** TYPICAL SECTION FROM # STA. 94+75 TO # STA. 98+80**
Not to Scale



TYPICAL SECTION FROM # STA. 34+50 TO # STA. 52+10
Not to Scale

NOTES:

- * 1. Prior to cold-planing, the Contractor shall reconstruct weakened pavement areas (where shown on the plans) with 8 inches of plant mix glassphalt concrete base below the existing pavement grade.
- ** 2. See Plan Sht. #9 for Resurfacing at Puhi Road and Kauai Community College Driveway.

| | |
|-------------------|------|
| ORIGINAL PLAN | DATE |
| SURVEY PLOTTED BY | 9/04 |
| DRAWN BY | |
| TRACED BY | |
| DESIGNED BY | |
| CHECKED BY | |

STATE OF HAWAII
DEPARTMENT OF TRANSPORTATION
HIGHWAYS DIVISION

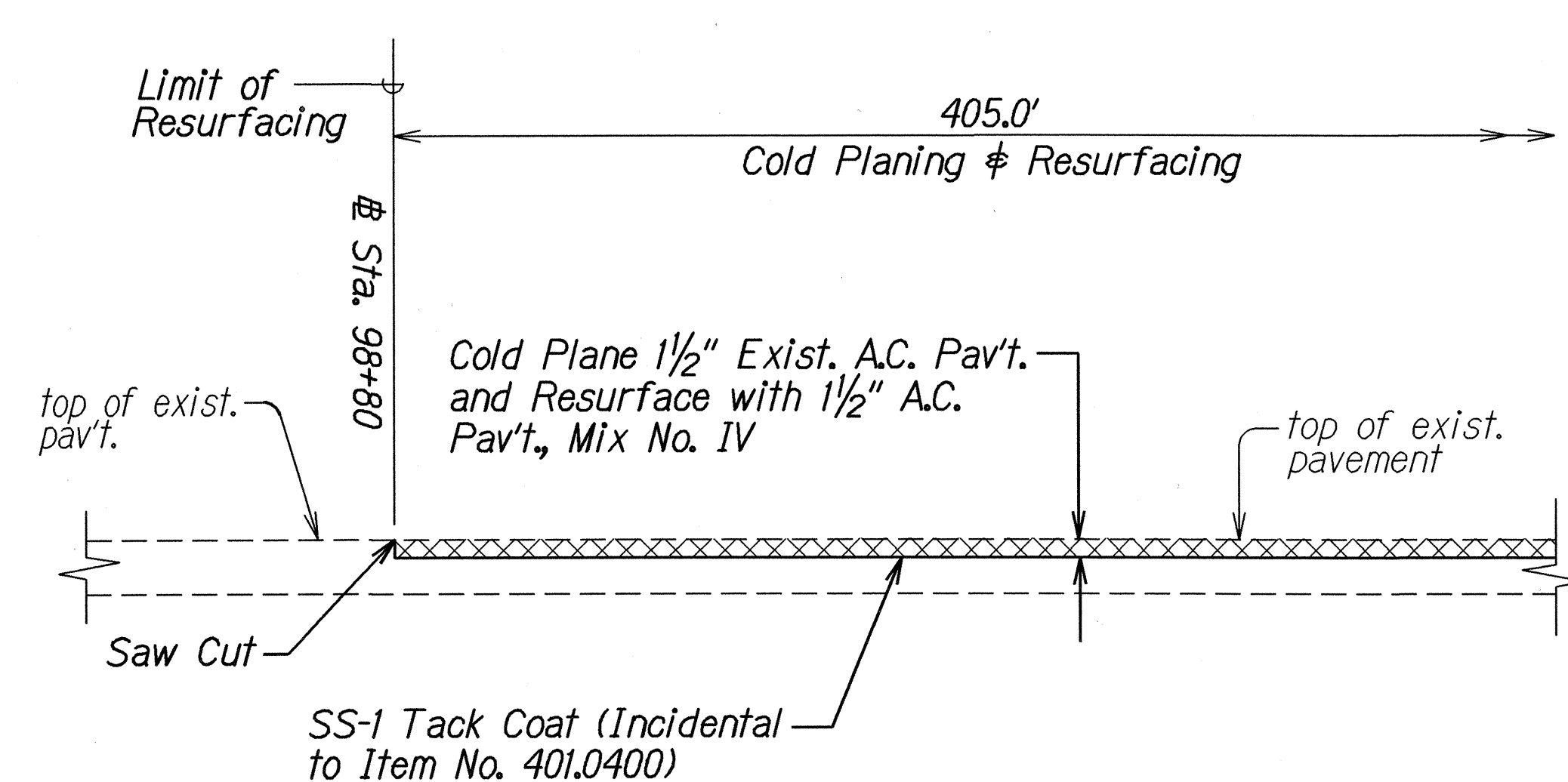
TYPICAL SECTIONS

KAUMUALII HIGHWAY RESURFACING
Lihue Mill Bridge to Puhi Road
Project No. 50DE-01-05M

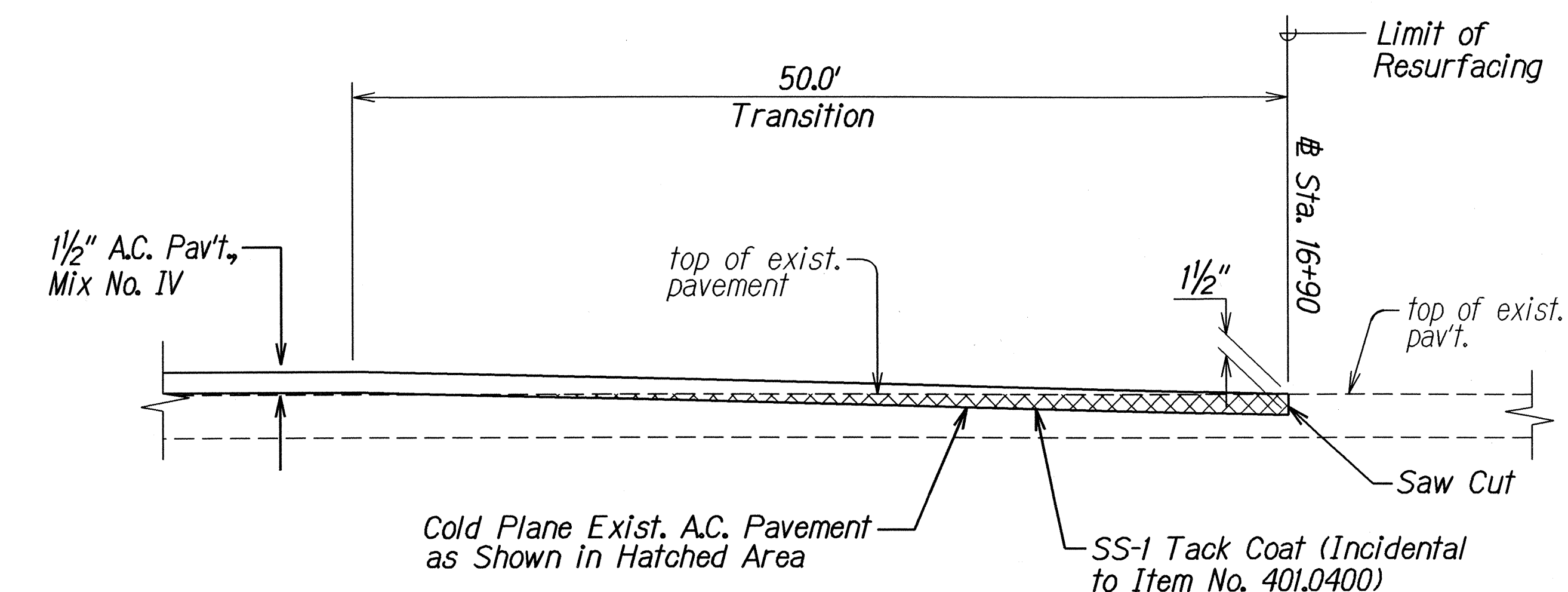
Scale: As Shown Date: January 2005

SHEET No. 2 OF 6 SHEETS

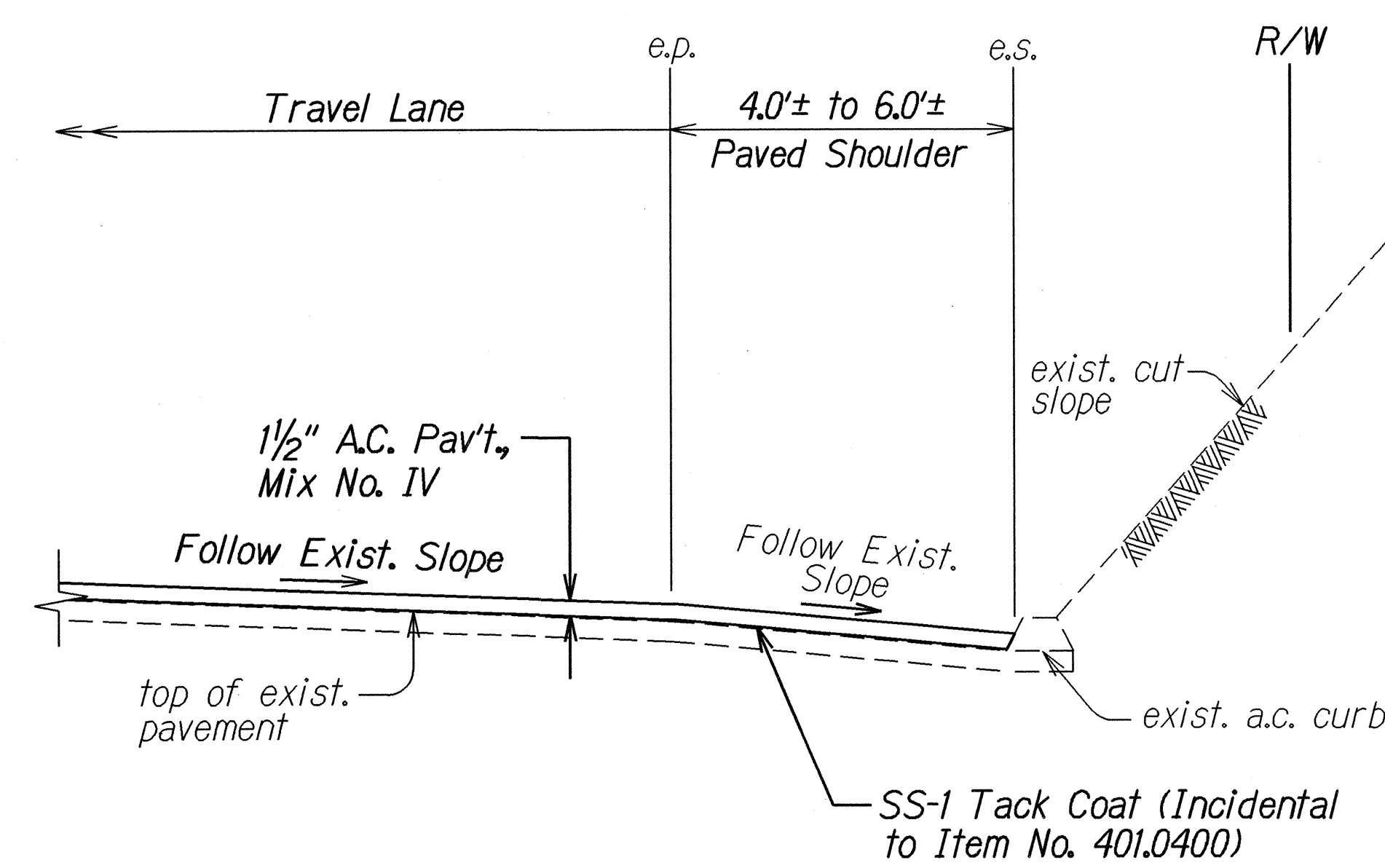
| FED. ROAD DIST. NO. | STATE | PROJ. NO. | FISCAL YEAR | SHEET NO. | TOTAL SHEETS |
|---------------------|-------|-------------|-------------|-----------|--------------|
| HAWAII | HAW. | 50DE-01-05M | 2005 | 8 | 39 |



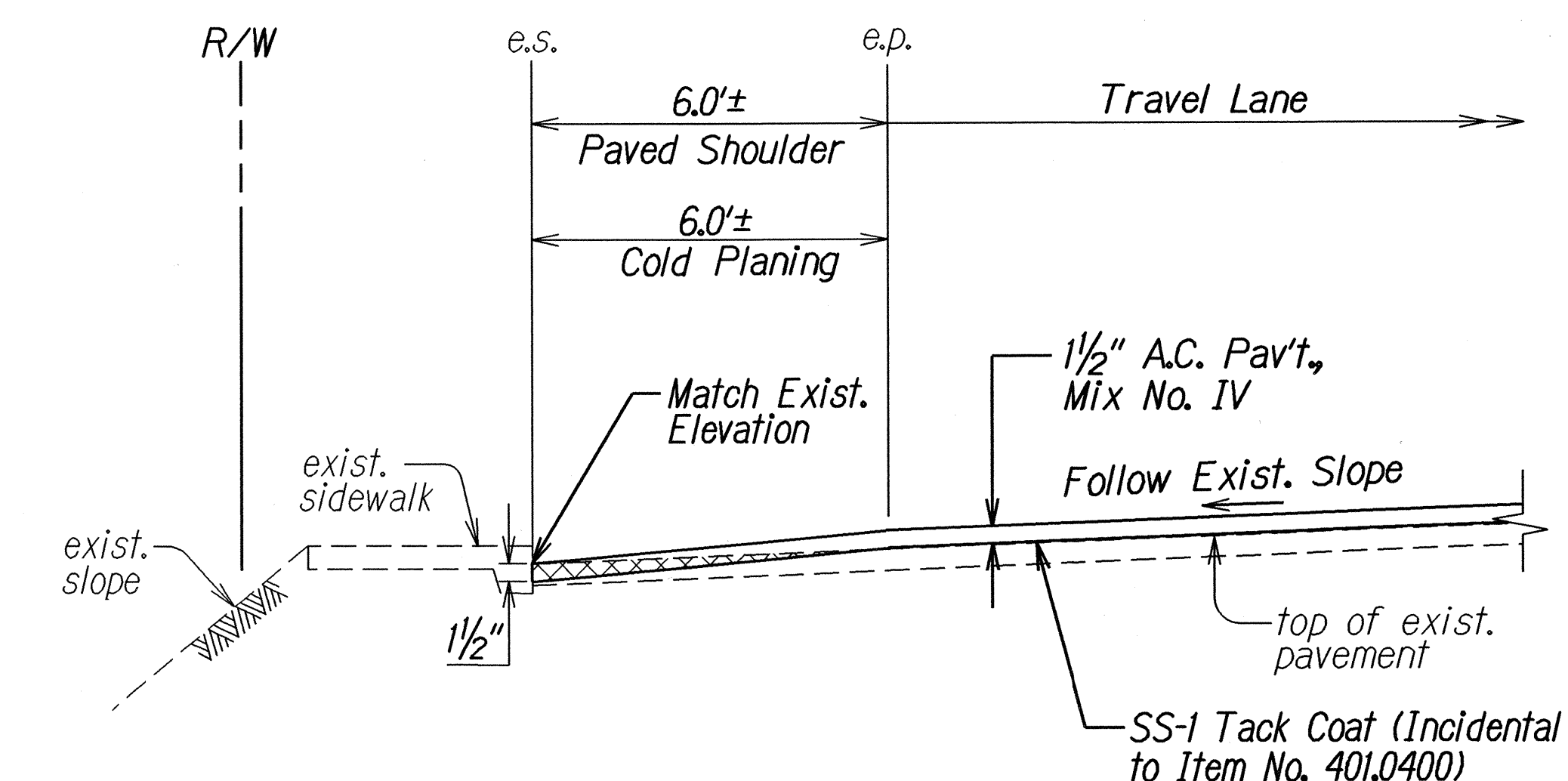
**COLD PLANED TRANSITION TO EXISTING A.C. PAVEMENT
AT BEGINNING OF PROJECT**
Not to Scale



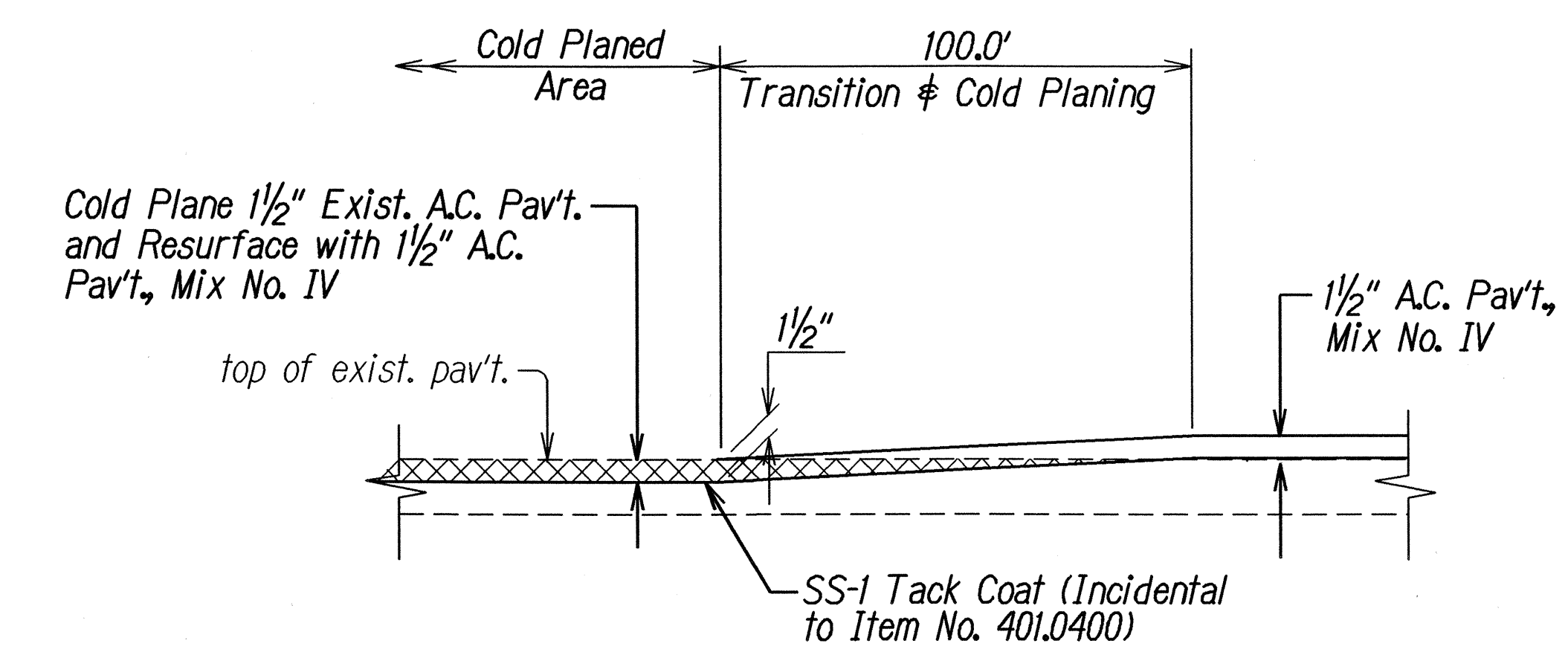
**COLD PLANED TRANSITION TO EXISTING A.C. PAVEMENT
AT END OF PROJECT**
Not to Scale



SECTION AT EXISTING A.C. CURB LOCATIONS
Sta. 21+00± to # Sta. 30+00± o/s Rt.
Not to Scale



SECTION AT EXISTING SIDEWALK LOCATIONS
Sta. 16+90± to # Sta. 25+00± o/s Lt.



TRANSITION TO COLD-PLANED AREAS
Not to Scale

| | |
|-------------------|------|
| SURVEY PLOTTED BY | DATE |
| DRAWN BY | 9/02 |
| TRACED BY | |
| NOTED BY | |
| CHECKED BY | |

STATE OF HAWAII
DEPARTMENT OF TRANSPORTATION
HIGHWAYS DIVISION

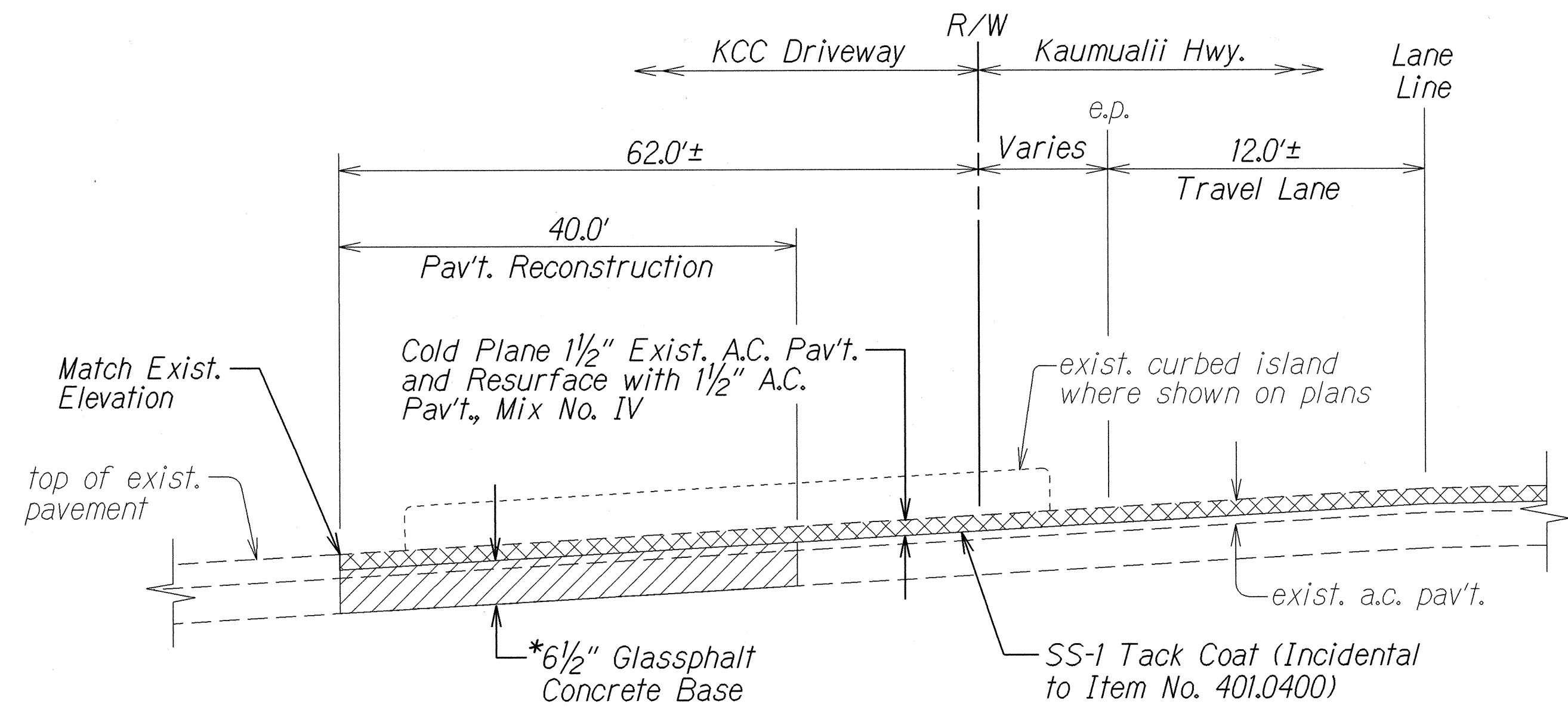
TYPICAL SECTIONS

KAUMUALII HIGHWAY RESURFACING
Lihue Mill Bridge to Puhi Road
Project No. 50DE-01-05M

Scale: As Shown Date: January 2005

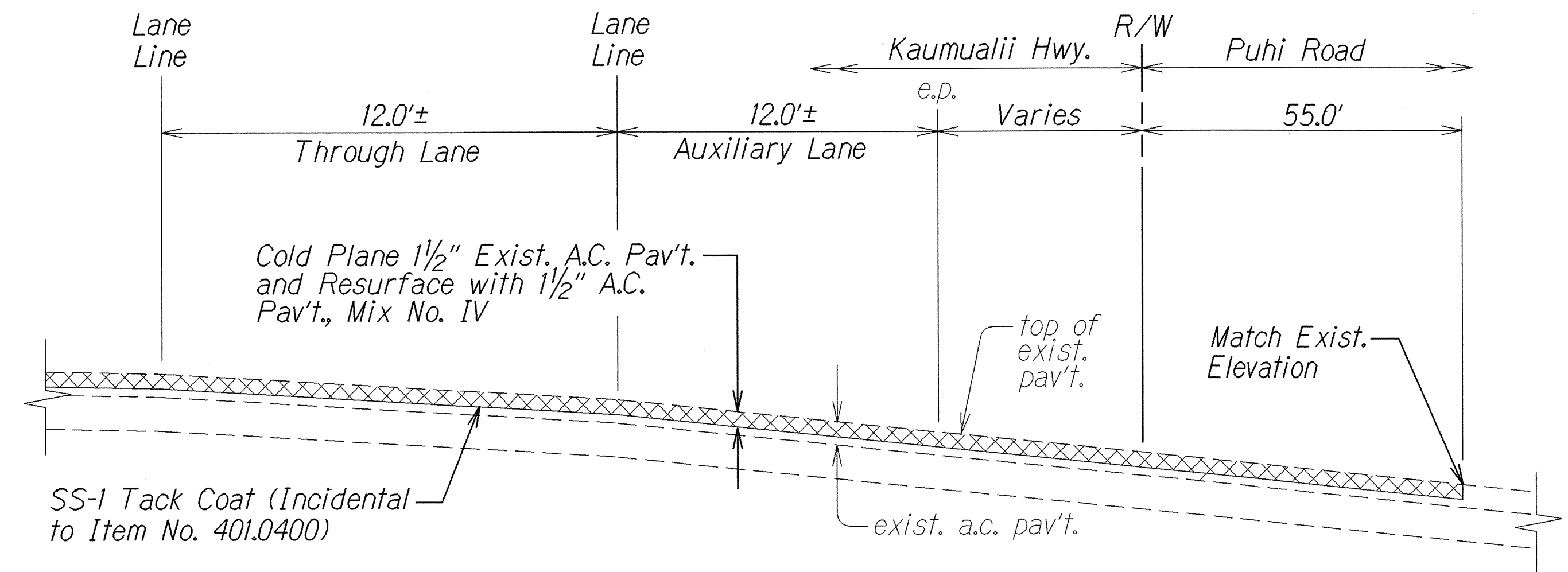
SHEET No. 3 OF 6 SHEETS

| FED. ROAD DIST. NO. | STATE | PROJ. NO. | FISCAL YEAR | SHEET NO. | TOTAL SHEETS |
|---------------------|-------|-------------|-------------|-----------|--------------|
| HAWAII | HAW. | 50DE-01-05M | 2005 | 9 | 39 |



RESURFACING AT KAUAI COMMUNITY COLLEGE PAVED DRIVEWAY

Not to Scale

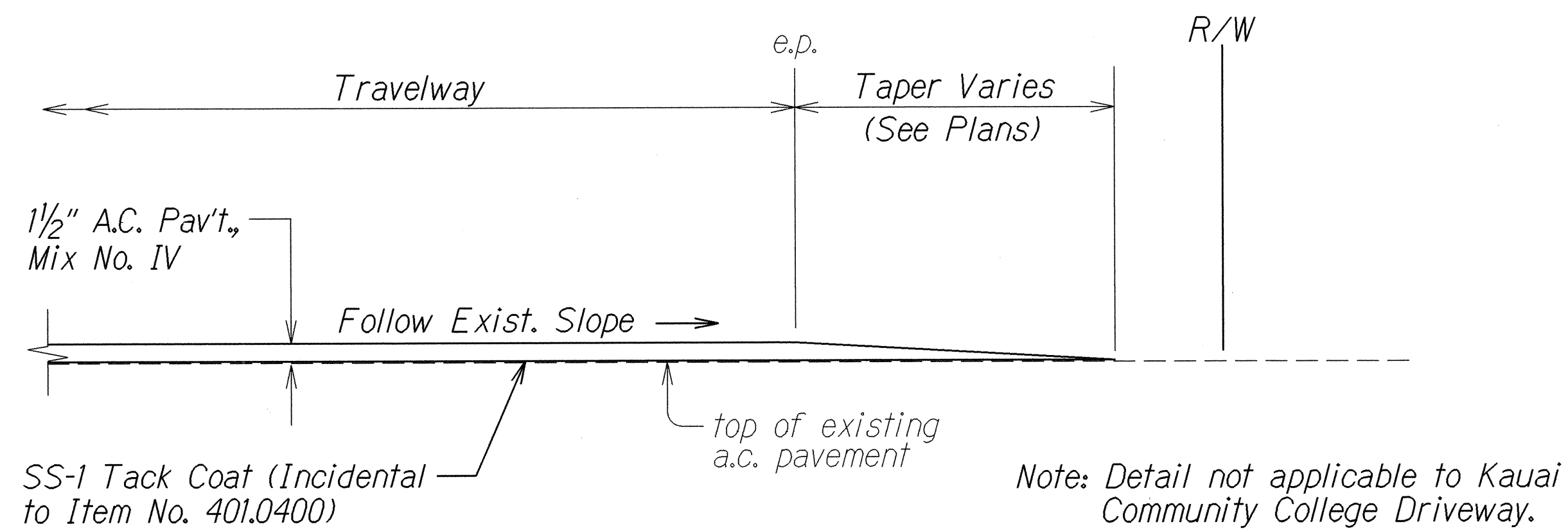


RESURFACING AT PUHI ROAD

Not to Scale

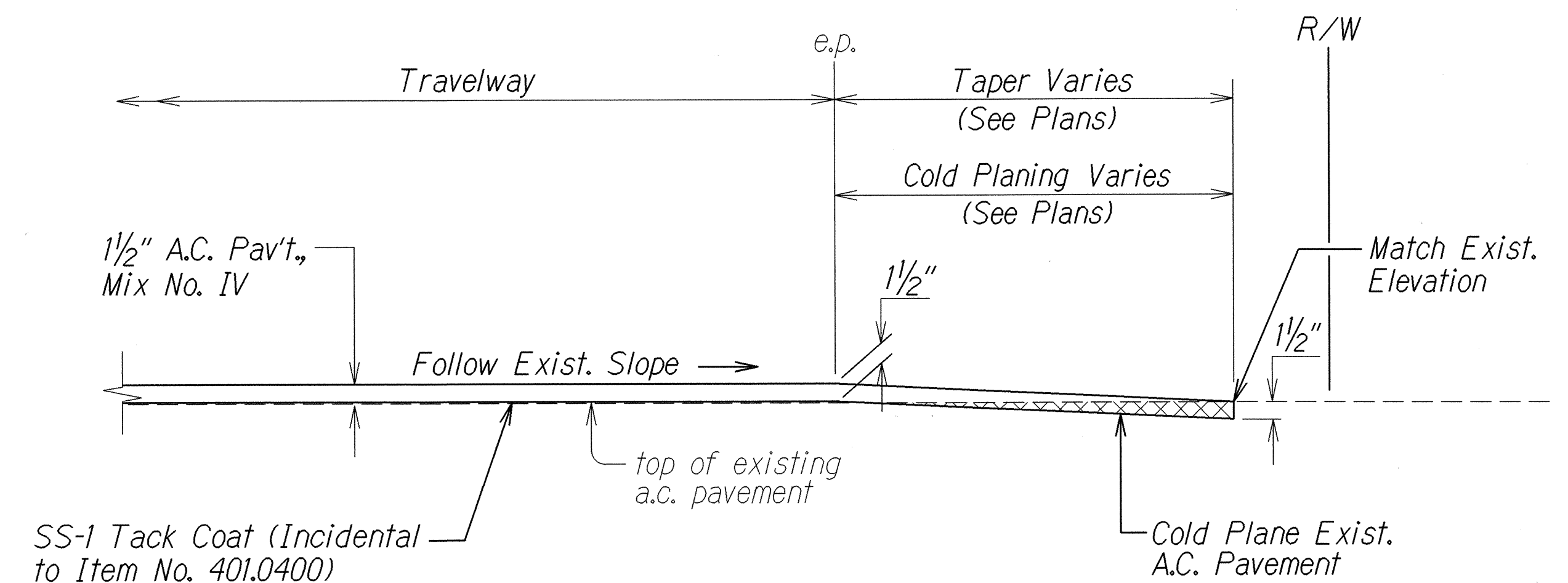
NOTE:

* Prior to cold planing, the Contractor shall reconstruct the weakened pavement areas with 8" thick plant mix glassphalt concrete base below the existing pavement grade.



RESURFACING AT PAVED DRIVEWAYS

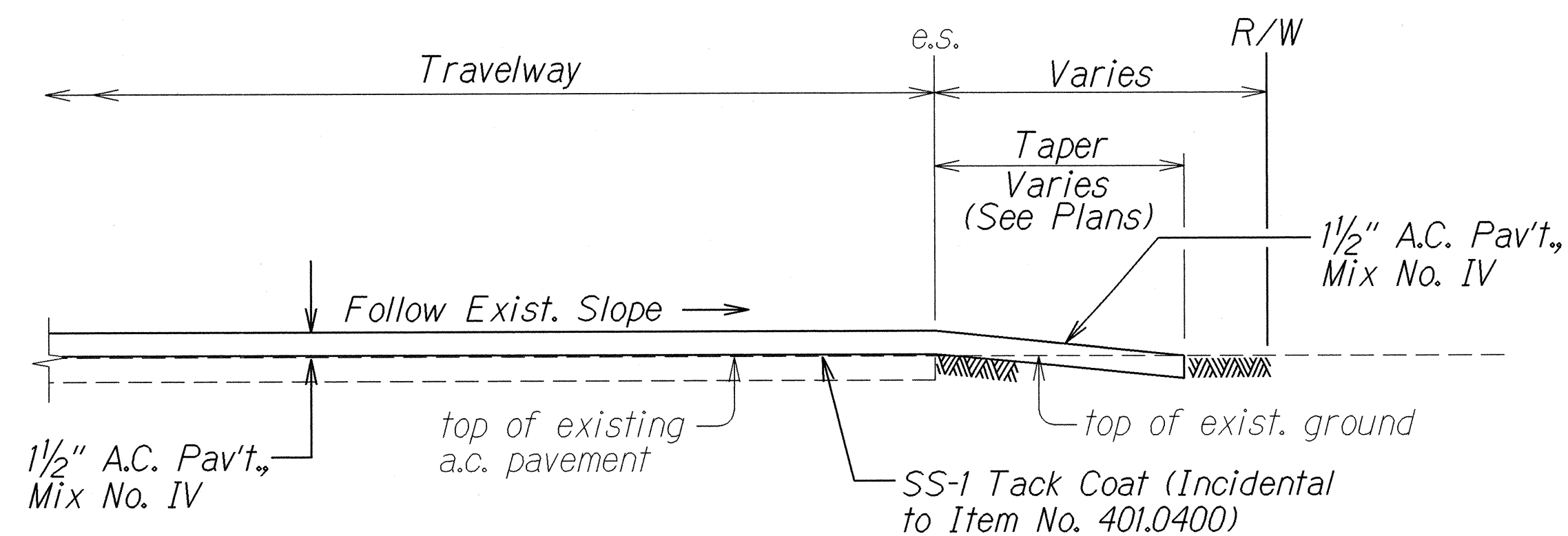
Not to Scale



RESURFACING AT PAVED SIDEROADS

Not to Scale

Note: Detail not applicable to Puhi Road, Nuhou Street, Kalepa Street and Nawiliwili Road.



RESURFACING AT UNPAVED SIDEROADS OR UNPAVED DRIVEWAYS

Not to Scale

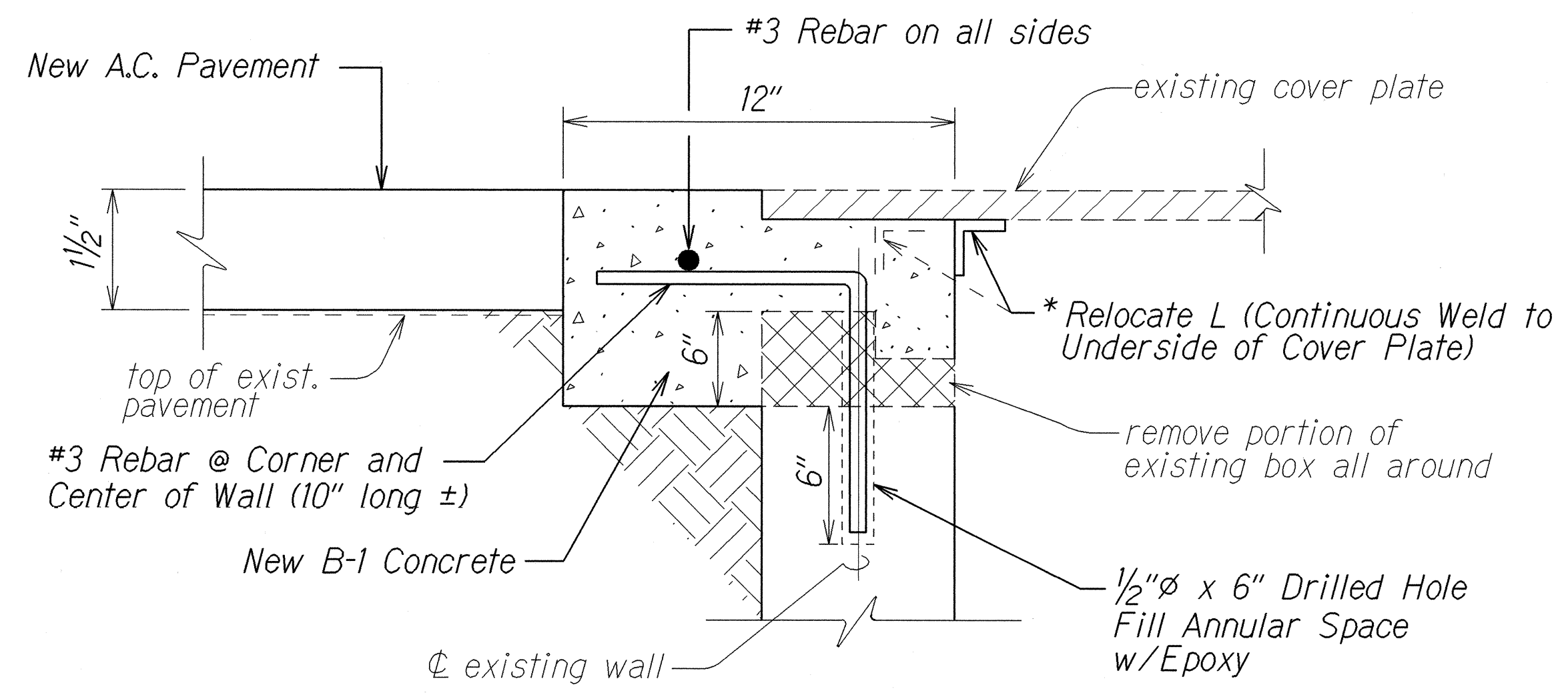
APPROVED: (For Work Within County Right-of-Way)

Maui Kudo
County Engineer

1/20/05
Date

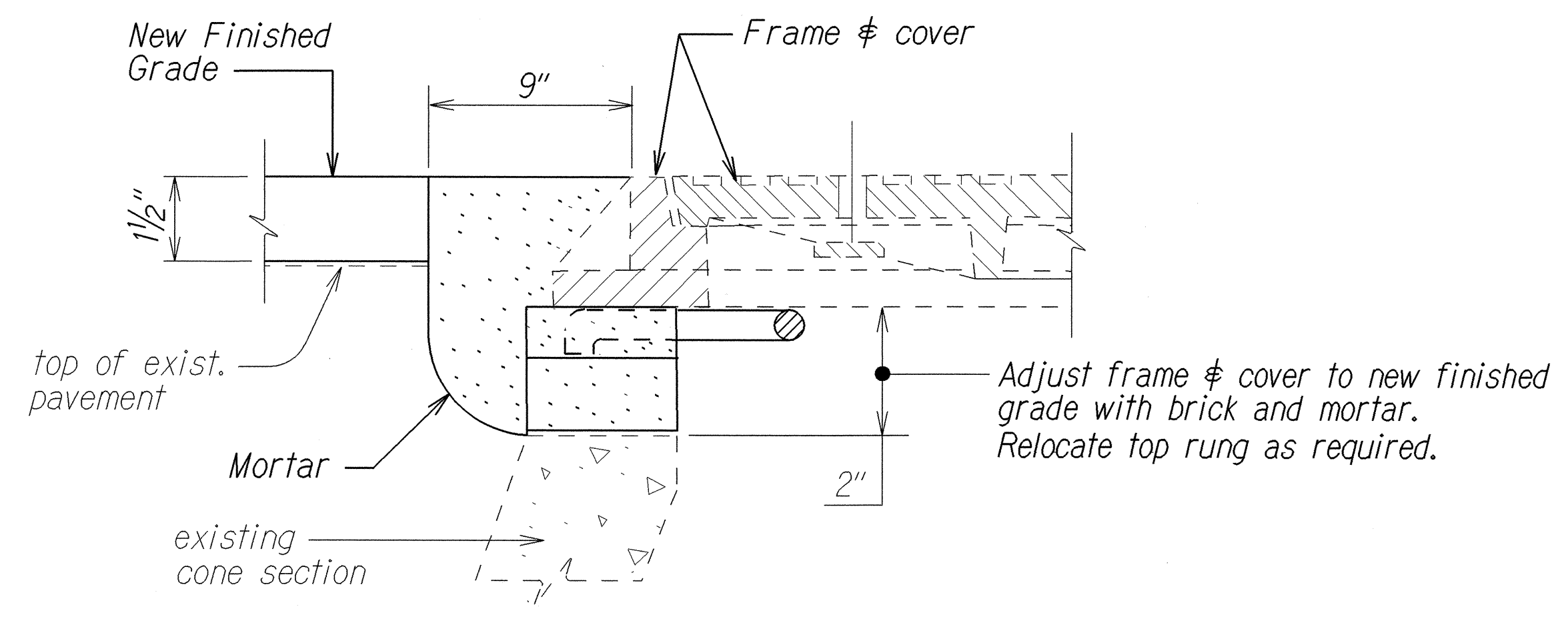
| |
|--|
| STATE OF HAWAII DEPARTMENT OF TRANSPORTATION HIGHWAYS DIVISION |
| TYPICAL SECTIONS |
| KAUMUALII HIGHWAY RESURFACING Lihue Mill Bridge to Puhi Road Project No. 50DE-01-05M |
| Scale: As Shown Date: January 2005 |
| SHEET No. 4 OF 6 SHEETS |

| FED. ROAD DIST. NO. | STATE | PROJ. NO. | FISCAL YEAR | SHEET NO. | TOTAL SHEETS |
|---------------------|-------|-------------|-------------|-----------|--------------|
| HAWAII | HAW. | 50DE-01-05M | 2005 | 11 | 39 |



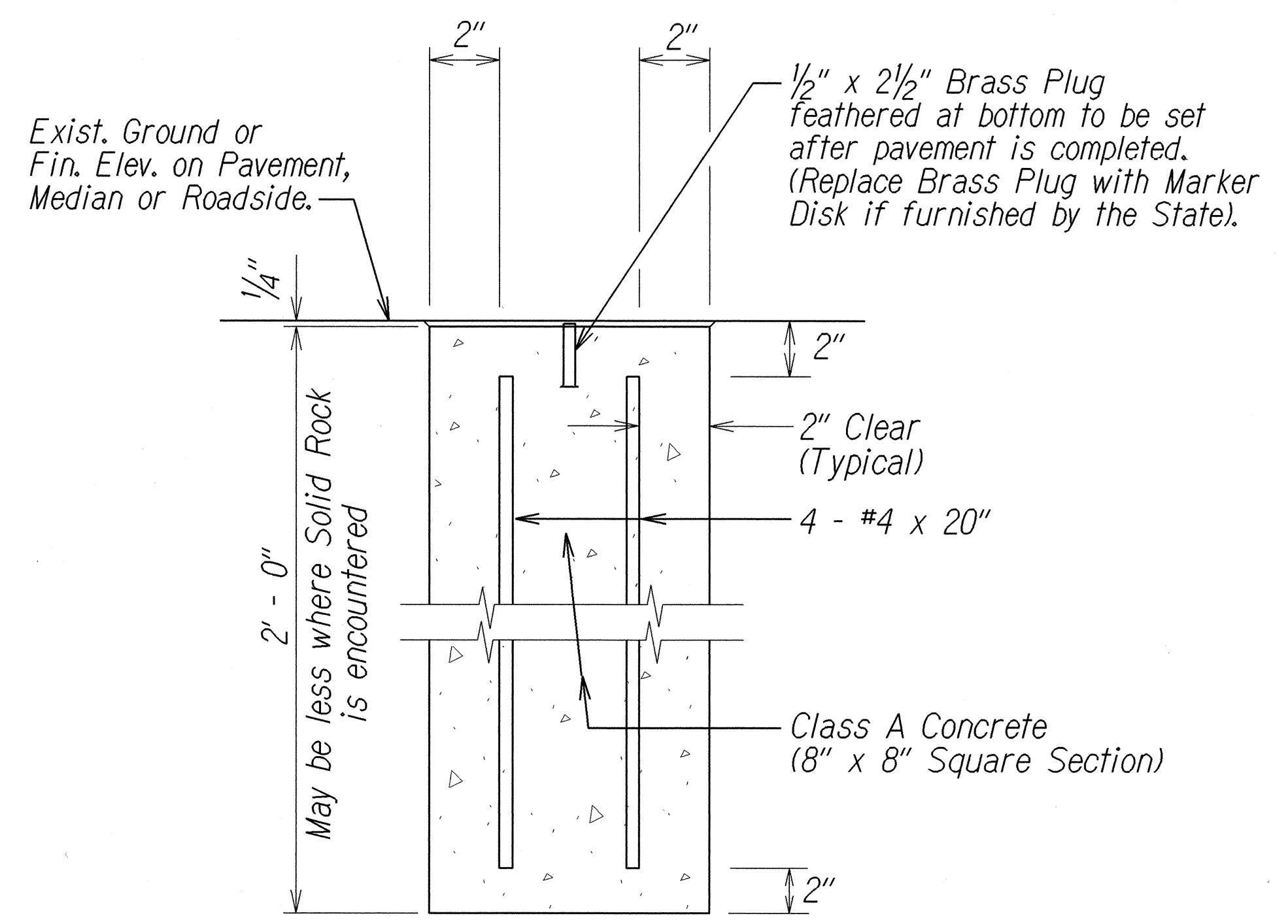
UTILITY BOX ADJUSTMENT DETAIL
Not to Scale

* NOTE: For utility boxes with cover frames, the Contractor shall remove and adjust the frames to the new finished grade by embedding the frame in new concrete section as shown above

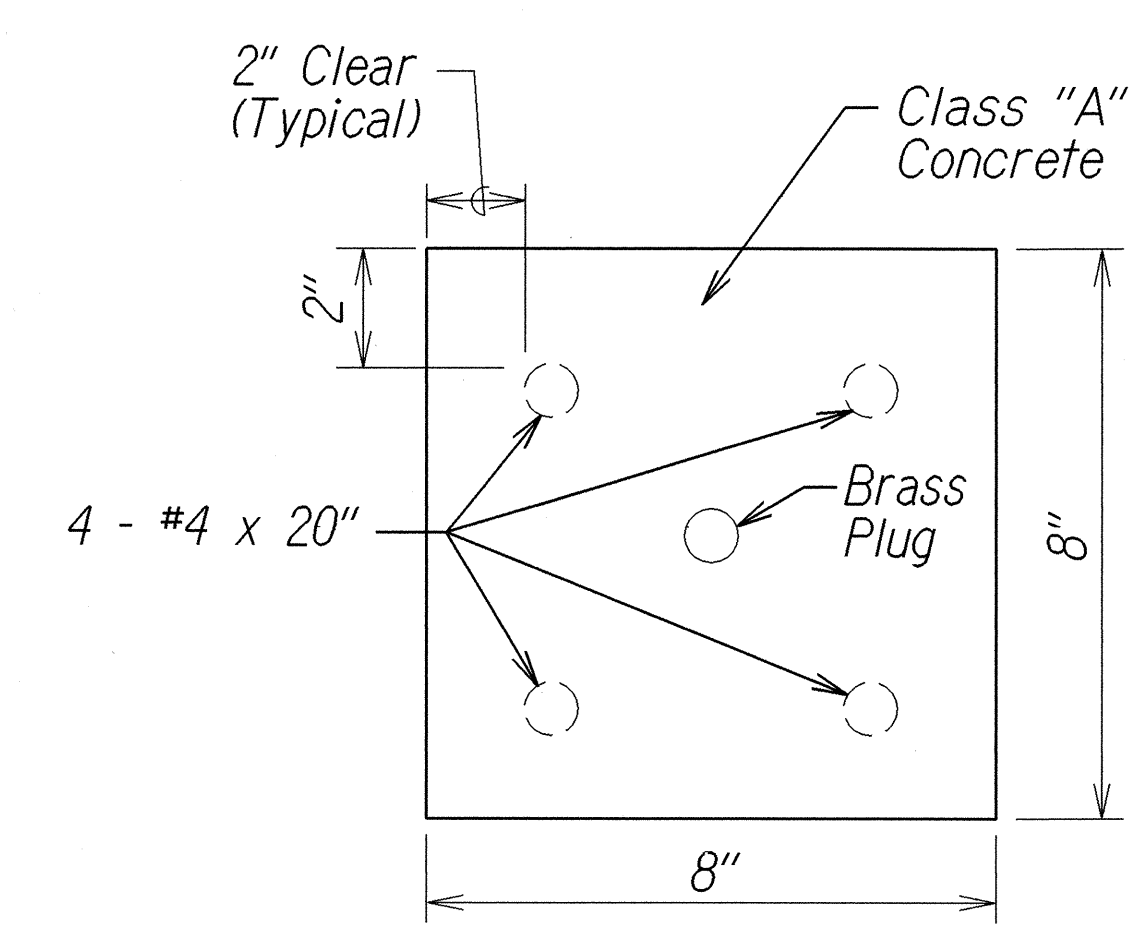


TYPICAL MANHOLE FRAME & COVER ADJUSTMENT
(SEWER, STORM DRAIN & UTILITY MANHOLES)
Not to Scale

NOTE: As an option, the Contractor may use an Adjus-to-Grade four-section extension ring with Safe-Tite seal, as manufactured by the National Utility Products Co. (NUPCO), or approved equal.



DETAIL FOR CENTERLINE & REFERENCE SURVEY MONUMENT
Not to Scale



PLAN VIEW

APPROVED: (For Work Within County Right-of-Way)
Prallan K. O. 1/22/05
County Engineer Date

STATE OF HAWAII
DEPARTMENT OF TRANSPORTATION
HIGHWAYS DIVISION

TYPICAL SECTIONS
KAUMUALII HIGHWAY RESURFACING
Lihue Mill Bridge to Puhi Road
Project No. 50DE-01-05M
Scale: As Shown Date: January 2005
SHEET No. 6 OF 6 SHEETS

| | | |
|---------------|-------------------|------|
| ORIGINAL PLAN | SURVEY PLOTTED BY | DATE |
| NOTE BOOK | DESIGNED BY | |
| | QUANTITIES BY | |
| | CHECKED BY | |