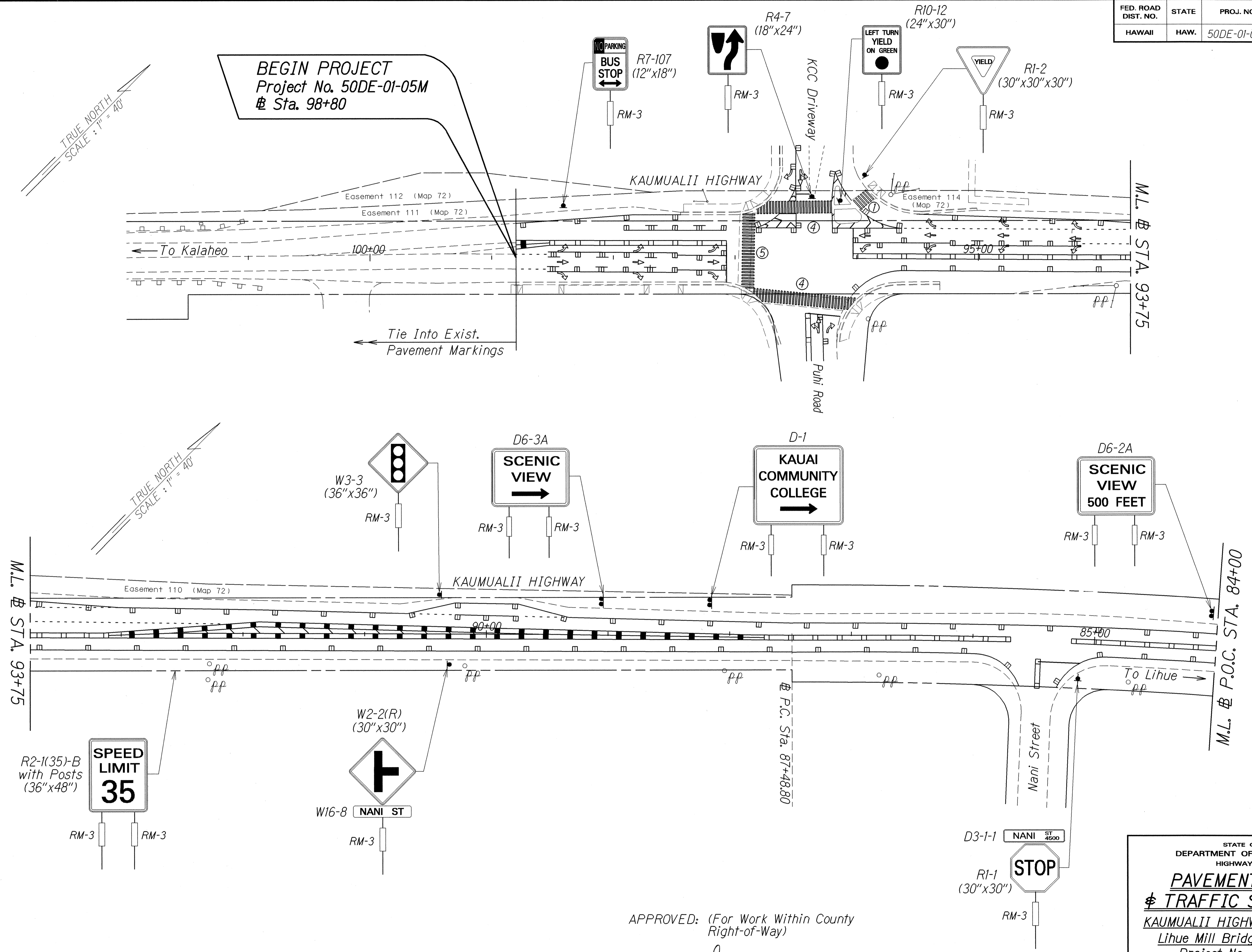


FED. ROAD DIST. NO.	STATE	PROJ. NO.	FISCAL YEAR	SHEET NO.	TOTAL SHEETS
HAWAII	HAW.	50DE-01-05M	2005	18	39



SURVEY PLOTTED BY	DATE
DRAWN BY	2/2/04
DESIGNED BY	
QUANTITIES BY	
CHECKED BY	
ORIGINAL PLAN	
NOTE BOOK	
REVISION	
DATE	

APPROVED: (For Work Within County Right-of-Way)  
*Mama Kudo*  
 County Engineer      1/20/05  
 Date

STATE OF HAWAII  
 DEPARTMENT OF TRANSPORTATION  
 HIGHWAYS DIVISION

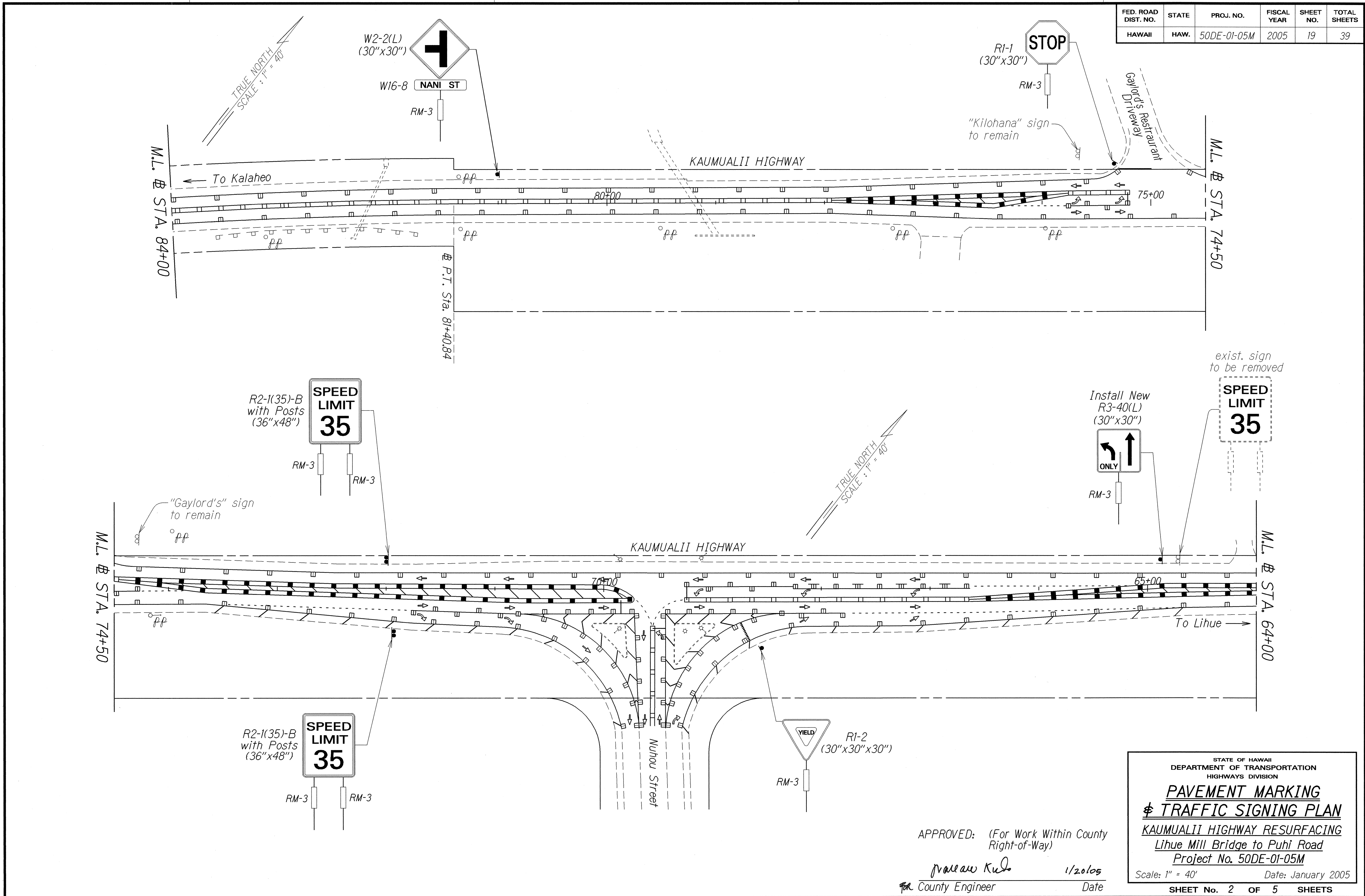
**PAVEMENT MARKING  
 & TRAFFIC SIGNING PLAN**

**KAUMUALII HIGHWAY RESURFACING**  
 Lihue Mill Bridge to Puhii Road  
 Project No. 50DE-01-05M

Scale: 1" = 40'      Date: January 2005

SHEET No. 1 OF 5 SHEETS

FED. ROAD DIST. NO.	STATE	PROJ. NO.	FISCAL YEAR	SHEET NO.	TOTAL SHEETS
HAWAII	HAW.	50DE-01-05M	2005	19	39



ORIGINAL PLAN	DATE
SURVEY PLOTTED BY	2/2005
DRAWN BY	
DESIGNED BY	
QUANTITIES BY	
CHECKED BY	

APPROVED: (For Work Within County Right-of-Way)  
*Praveen Kud*  
 County Engineer  
 1/20/05  
 Date

STATE OF HAWAII  
 DEPARTMENT OF TRANSPORTATION  
 HIGHWAYS DIVISION

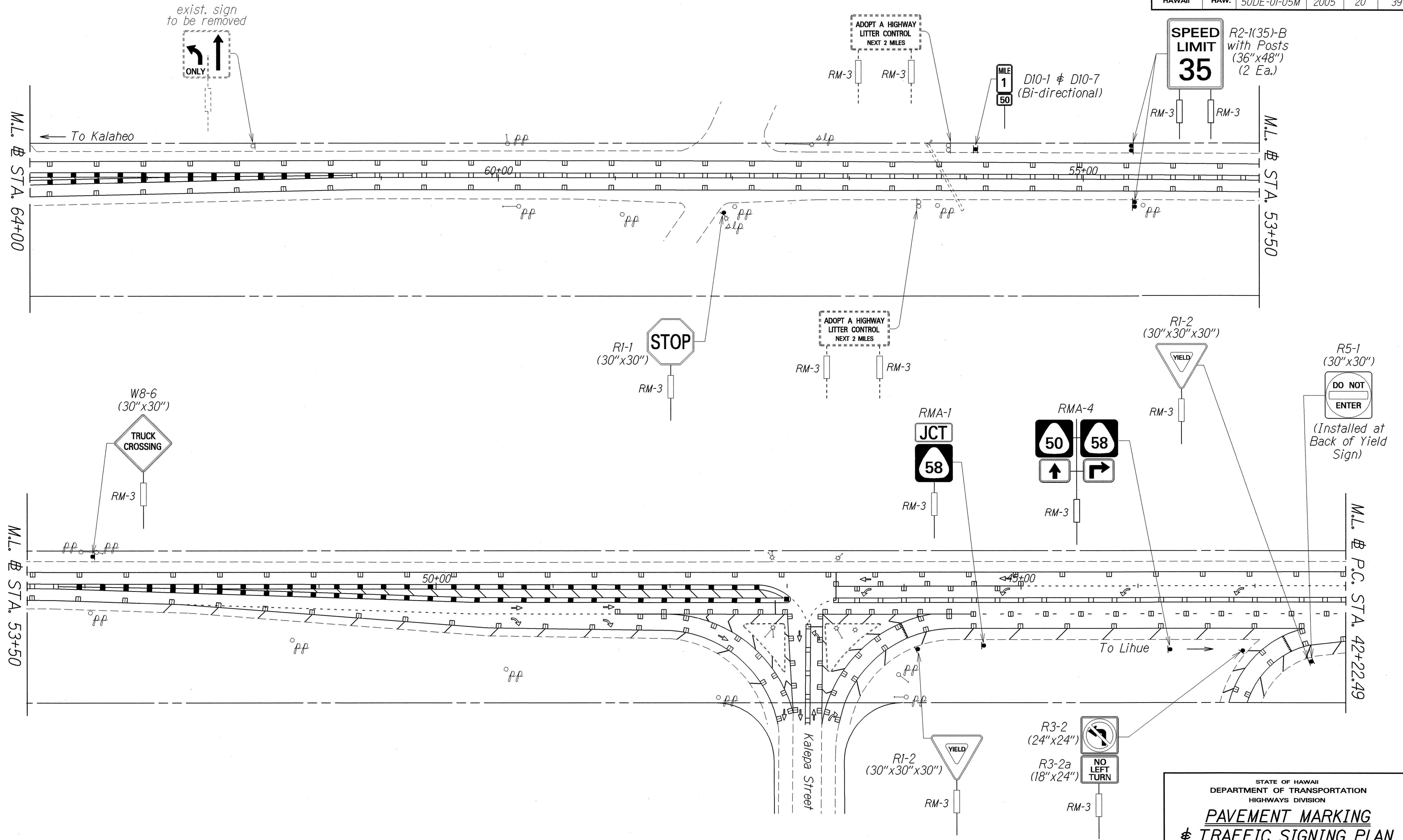
**PAVEMENT MARKING & TRAFFIC SIGNING PLAN**

**KAUMUALII HIGHWAY RESURFACING**  
 Lihue Mill Bridge to Puhi Road  
 Project No. 50DE-01-05M

Scale: 1" = 40' Date: January 2005

SHEET No. 2 OF 5 SHEETS

FED. ROAD DIST. NO.	STATE	PROJ. NO.	FISCAL YEAR	SHEET NO.	TOTAL SHEETS
HAWAII	HAW.	50DE-01-05M	2005	20	39



SURVEY PLOTTED BY	DATE
DESIGNED BY	
TRACED BY	
DESIGNED BY	
QUANTITIES BY	
CHECKED BY	

APPROVED: (For Work Within County Right-of-Way Only)  
*Paula Kueh* 1/20/05  
 County Engineer Date

STATE OF HAWAII  
 DEPARTMENT OF TRANSPORTATION  
 HIGHWAYS DIVISION

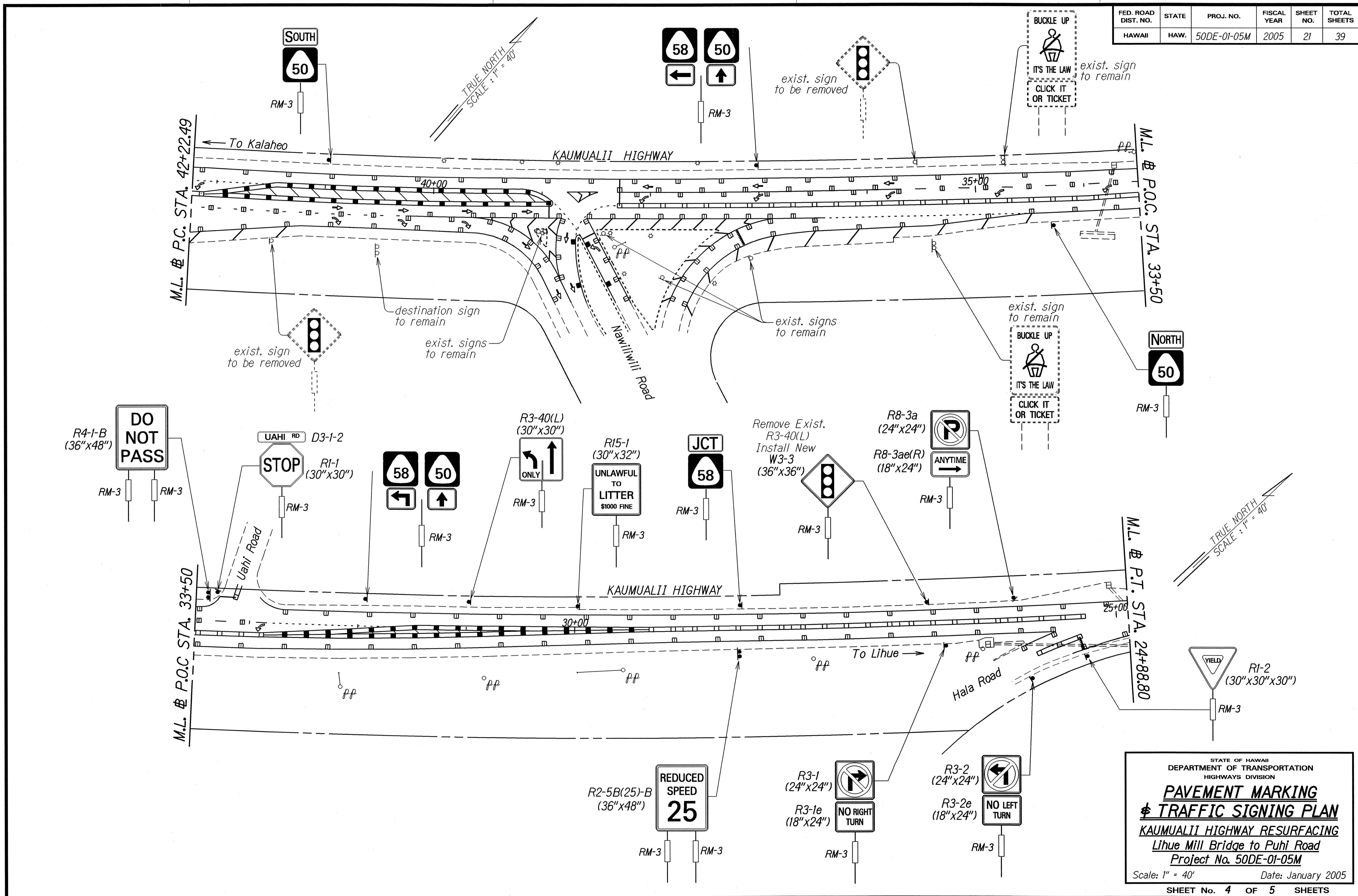
**PAVEMENT MARKING  
 & TRAFFIC SIGNING PLAN**

KAUMUALII HIGHWAY RESURFACING  
 Lihue Mill Bridge to Puhi Road  
 Project No. 50DE-01-05M

Scale: 1" = 40' Date: January 2005

SHEET No. 3 OF 5 SHEETS

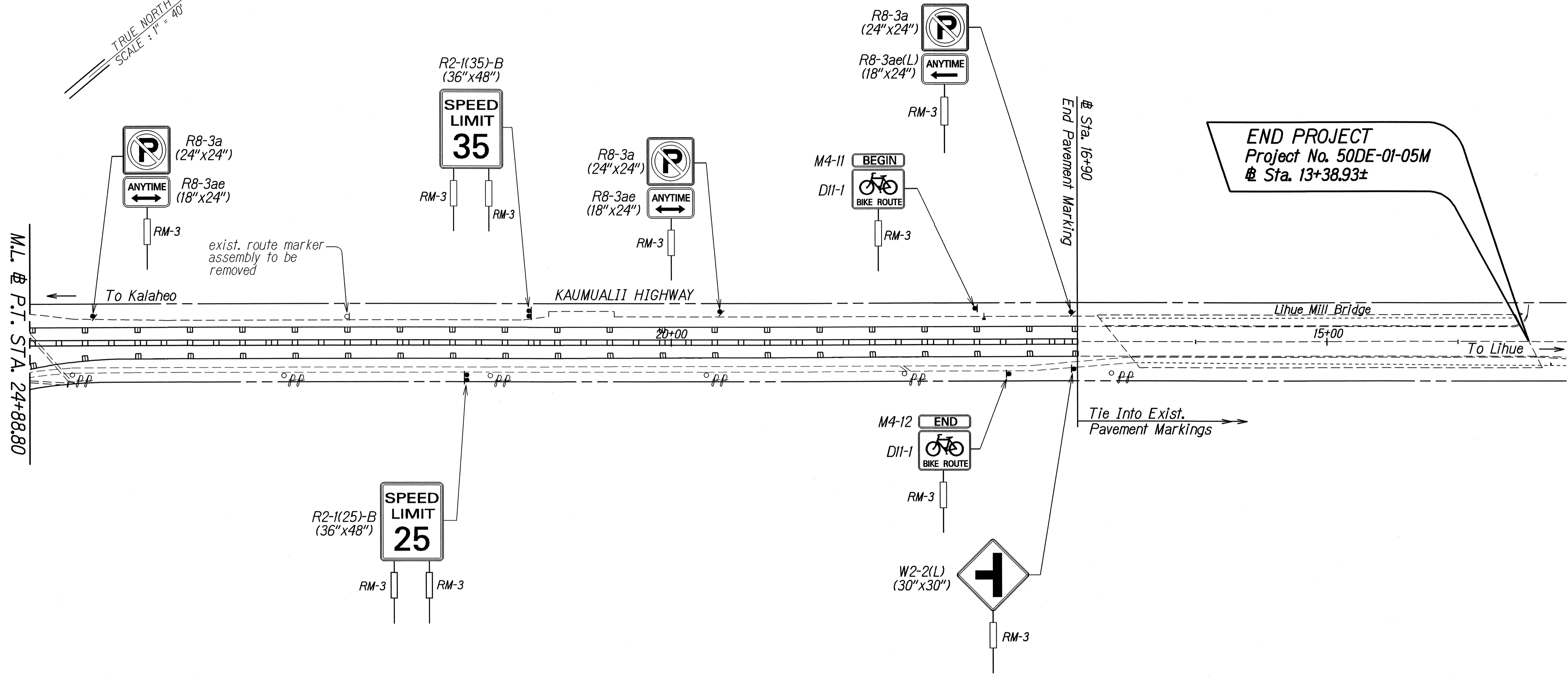
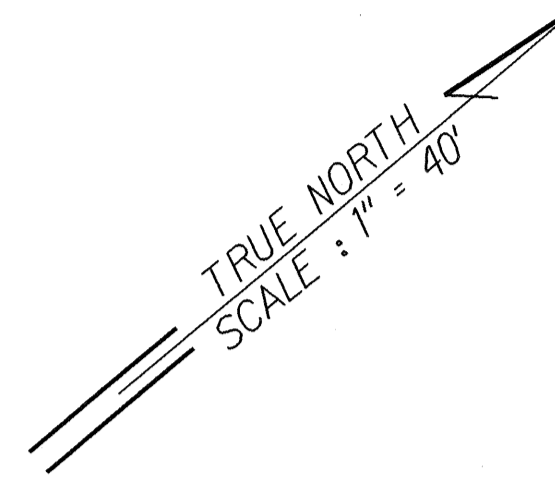
FED. ROAD DIST. NO.	STATE	PROJ. NO.	FISCAL YEAR	SHEET NO.	TOTAL SHEETS
HAWAII	HAW.	50DE-01-05M	2005	21	39



SURVEY PLOTTED BY: \_\_\_\_\_ DATE: 9/02  
 DRAWN BY: \_\_\_\_\_  
 TRACED BY: \_\_\_\_\_  
 NOTE BOOK: \_\_\_\_\_  
 CHECKED BY: \_\_\_\_\_  
 ORIGINAL PLAN: \_\_\_\_\_

STATE OF HAWAII  
 DEPARTMENT OF TRANSPORTATION  
 HIGHWAYS DIVISION  
**PAVEMENT MARKING**  
**& TRAFFIC SIGNING PLAN**  
**KAUMUALII HIGHWAY RESURFACING**  
 Lihue Mill Bridge to Puhi Road  
 Project No. 50DE-01-05M  
 Scale: 1" = 40' Date: January 2005  
 SHEET No. 4 OF 5 SHEETS

FED. ROAD DIST. NO.	STATE	PROJ. NO.	FISCAL YEAR	SHEET NO.	TOTAL SHEETS
HAWAII	HAW.	50DE-01-05M	2005	22	39



ORIGINAL SURVEY PLOTTED BY \_\_\_\_\_ DATE 9/04  
 PLAN DRAWN BY \_\_\_\_\_  
 NOTE BOOK \_\_\_\_\_  
 CHECKED BY \_\_\_\_\_  
 DATE \_\_\_\_\_

STATE OF HAWAII  
 DEPARTMENT OF TRANSPORTATION  
 HIGHWAYS DIVISION  
**PAVEMENT MARKING**  
**& TRAFFIC SIGNING PLAN**  
**KAUMUALII HIGHWAY RESURFACING**  
**Lihue Mill Bridge to Puhi Road**  
**Project No. 50DE-01-05M**  
 Scale: 1" = 40' Date: January 2005  
 SHEET No. 5 OF 5 SHEETS