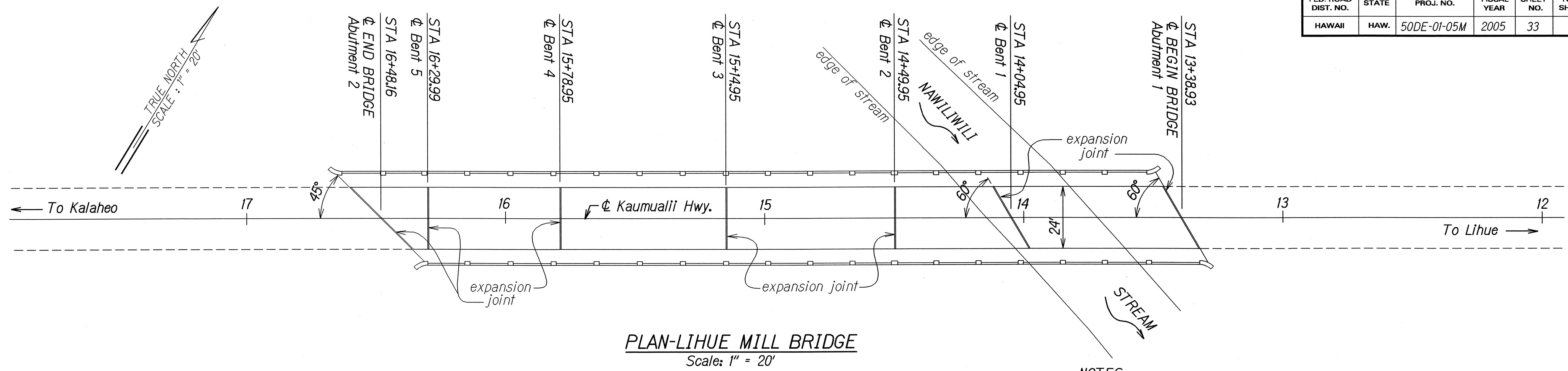
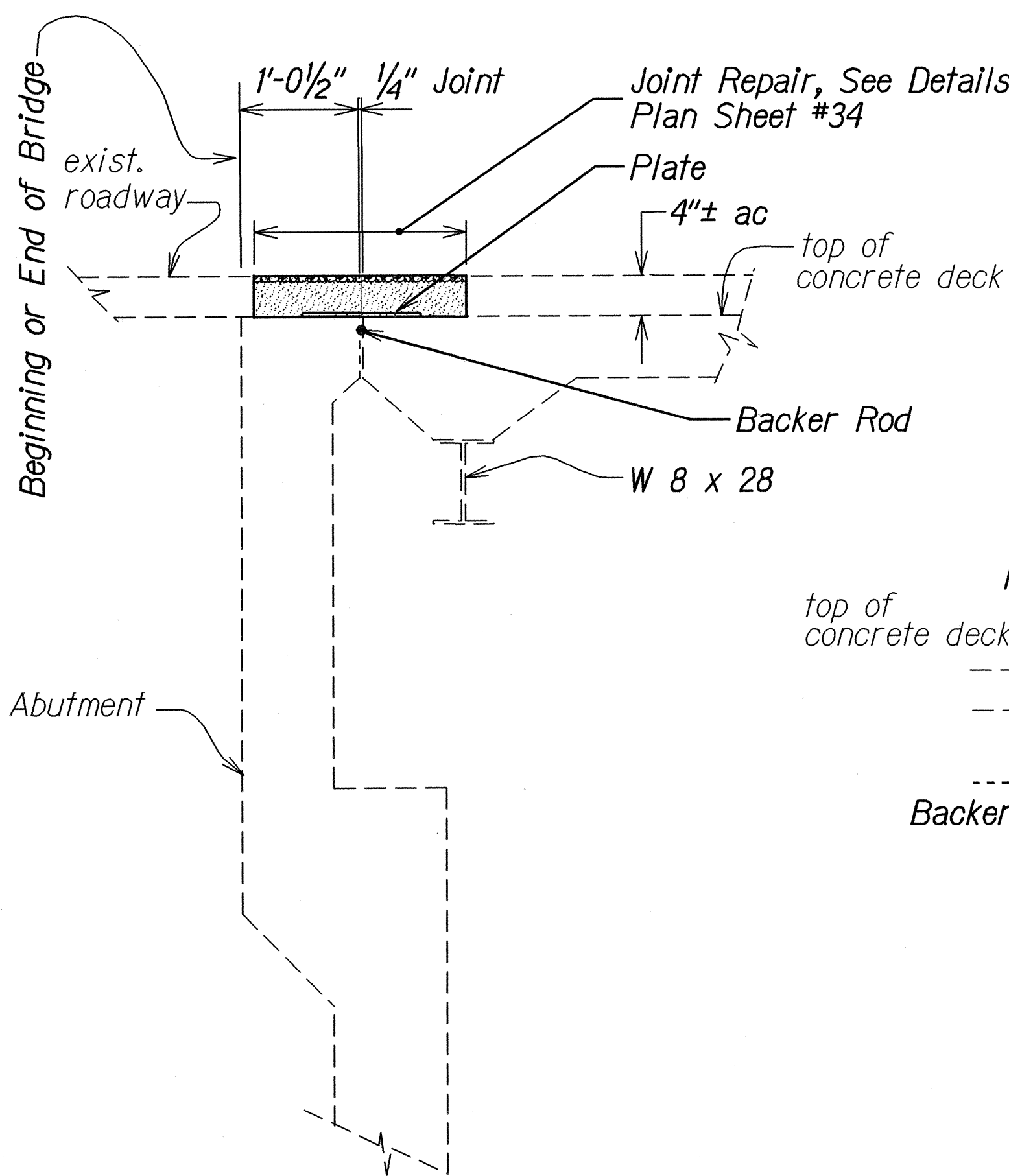


FED. ROAD DIST. NO.	STATE	PROJ. NO.	FISCAL YEAR	SHEET NO.	TOTAL SHEETS
HAWAII	HAW.	50DE-01-05M	2005	33	39

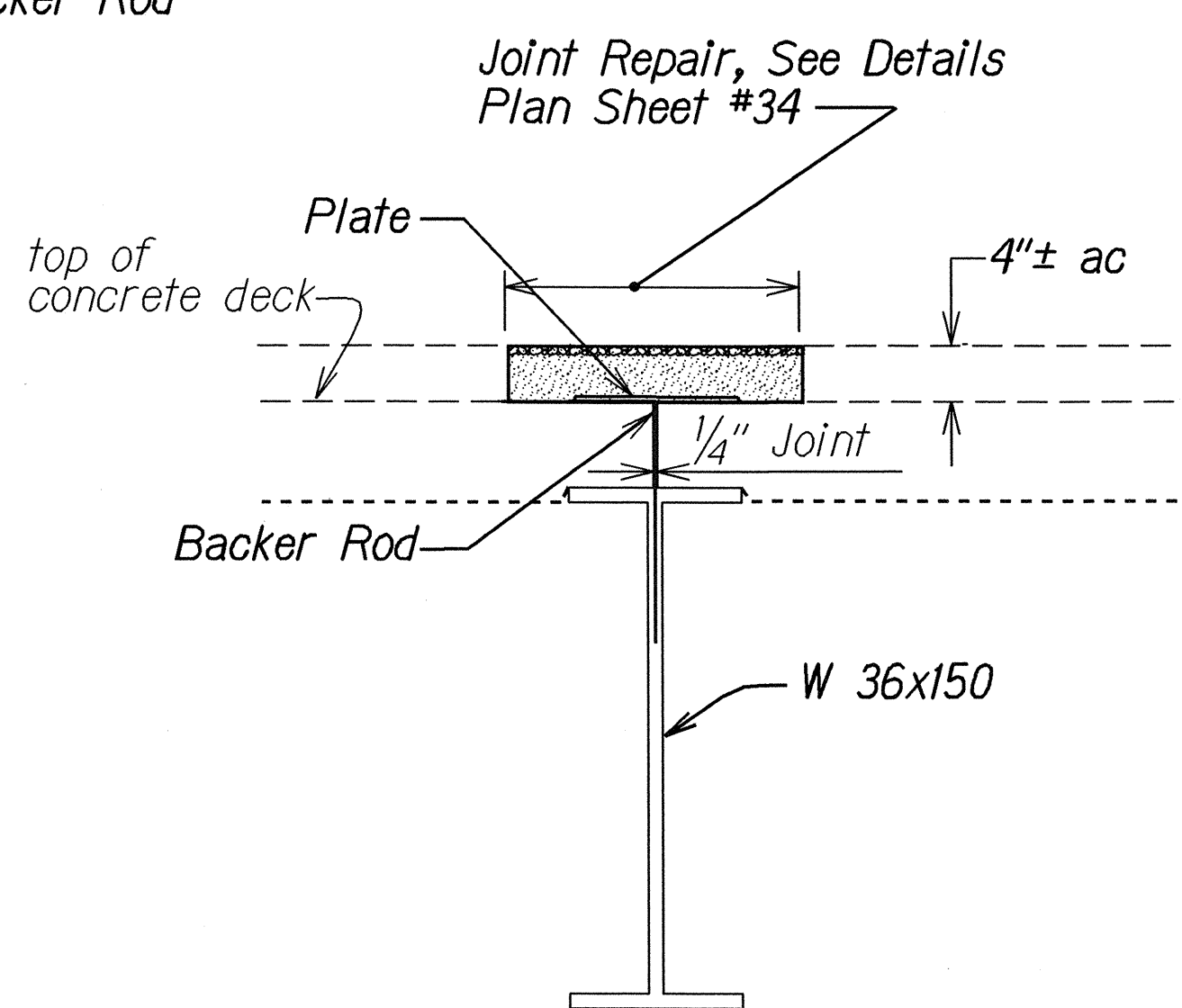


- NOTES:**
- Dimensions based on record drawings. Contractor shall verify existing field conditions prior to bidding.
 - LANE CLOSURES:** All lane closures shall be at night. During nightlane closures, one lane shall remain open to traffic at all times. The Engineer will allow the Contractor to night work only as follows:

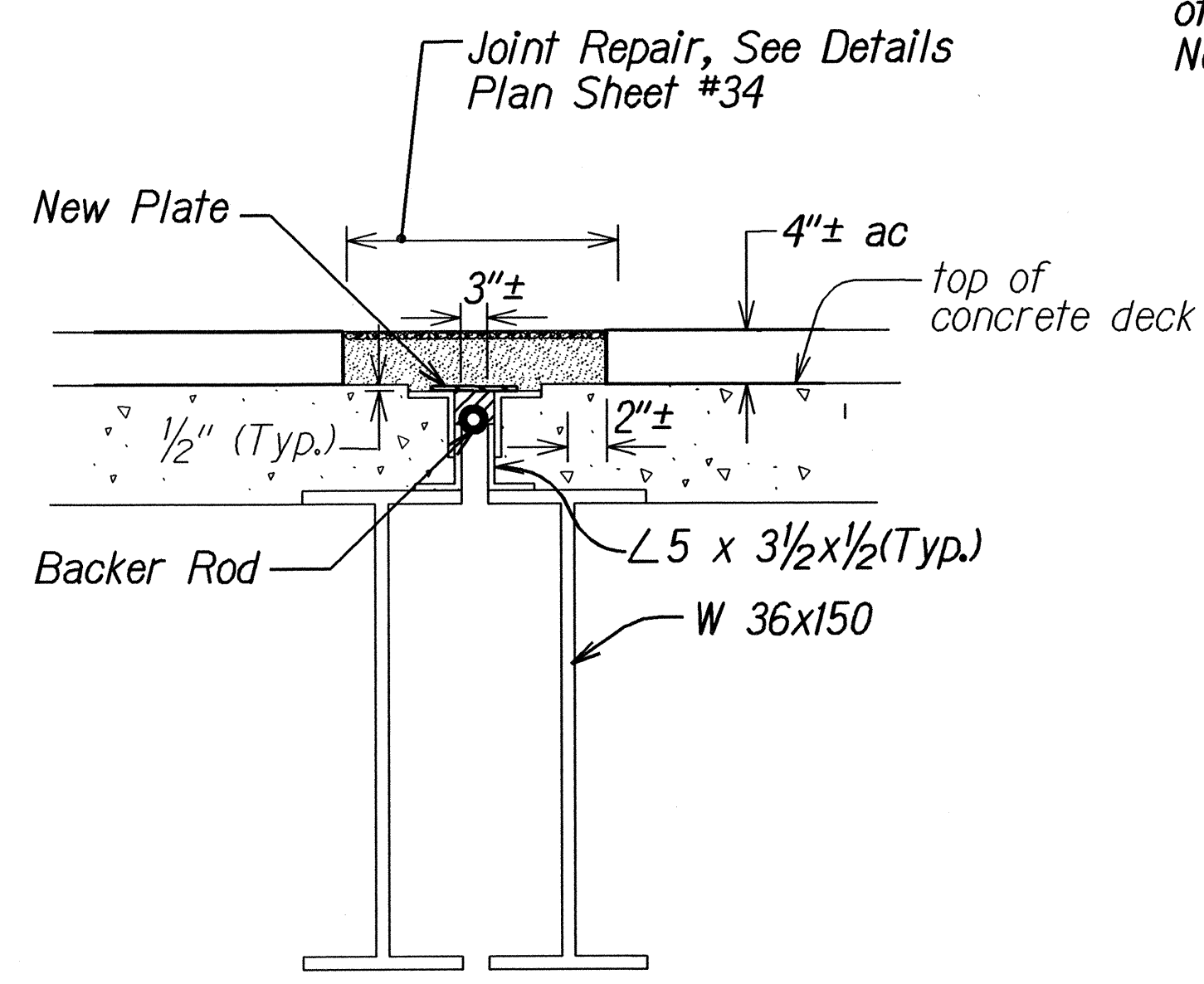
Sunday 10:00 P.M. - 12:00 Midnight
Monday thru Thursday 12:00 Midnight - 6:00 A.M.
 10:00 P.M. - 12:00 Midnight
Friday (Morning) 12:00 Midnight - 6:00 A.M.
 - See Specifications, Section 104 - Scope of Work for details.
 - Remove and dispose of existing bridge joints. Removal and disposal of existing bridge joints shall be considered incidental to contract Item No. 677.0100 - Joint Seals, Lihue Mill Bridge.



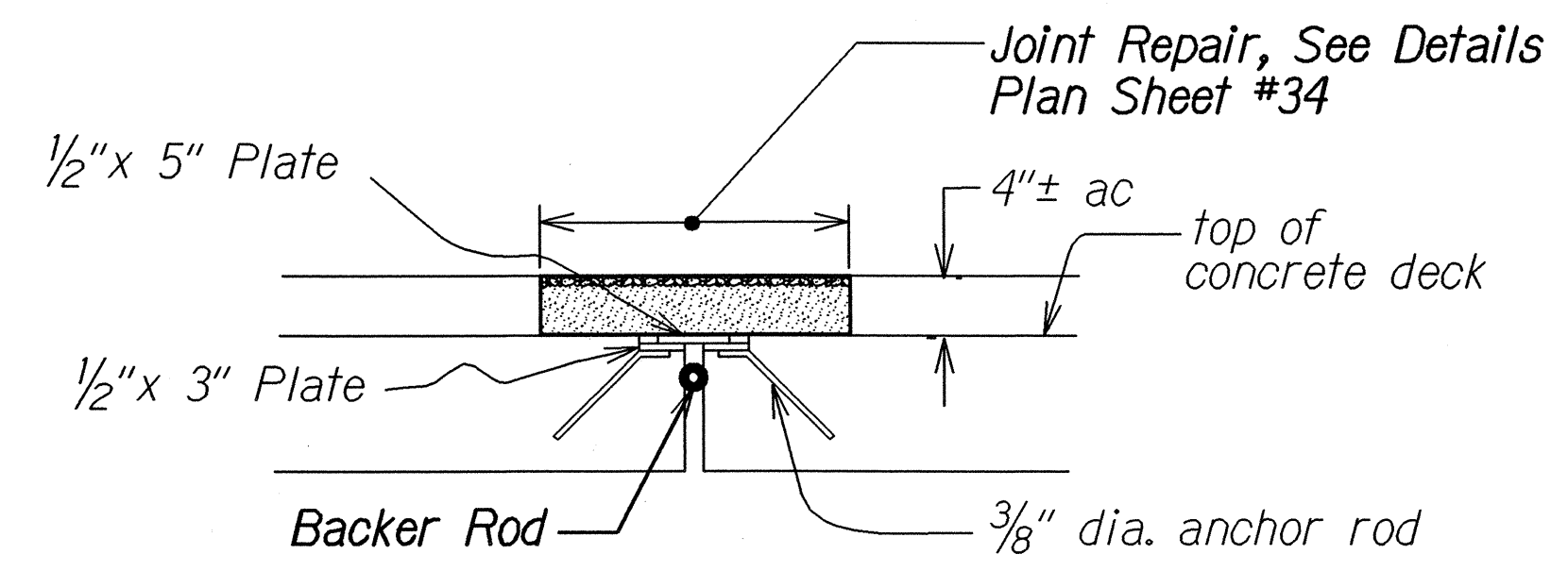
**TYPICAL JOINT DETAIL
AT ABUTMENTS 1 & 2**
Scale: 1"=1'



**TYPICAL JOINT DETAIL
AT BENTS 2 & 3**
Scale: 1"=1'



**JOINT REPAIR DETAIL
AT BENT 3**
Scale: 1"=1'



**TYPICAL JOINT DETAIL
AT BENTS 1 & 5**
Scale: 1"=1'

ORIGINAL PLAN	DATE	1/2/04
SURVEY PLOTTED BY		
DRAWN BY		
CHECKED BY		
NOTED BY		
QUANTITIES BY		
CHECKED BY		

STATE OF HAWAII
DEPARTMENT OF TRANSPORTATION
HIGHWAYS DIVISION

LIHUE MILL BRIDGE

BRIDGE JOINT REPAIR

KAUMUALII HIGHWAY RESURFACING

Lihue Mill Bridge to Puhi Road

Project No. 50DE-01-05M

Scale: As Shown Date: January 2005

SHEET No. 1 OF 1 SHEETS