

FED. ROAD DIST. NO.	STATE	FED. AID PROJ. NO.	FISCAL YEAR	SHEET NO.	TOTAL SHEETS
HAWAII	HAW.	STP-050-1(25)	2003	21	30

# GENERAL NOTES

- All hardware, posts and fasteners shall be hot-dip zinc coated galvanized after fabrication. No punching, drilling or cutting will be permitted after galvanizing.
- Where conditions require, special post lengths in increments of 6 inches may be specified.
- All fasteners, posts, and rail elements (i.e. FBB03, PWE01, RWM02a, etc.) shall conform to the latest edition and amendments of "A Guide to Standardized Highway Barrier Rail Hardware," a report prepared and approved by the AASHTO-AGC-ARTBA Joint Cooperative Committee, Subcommittee On New Highway Materials, Task Force 13 Report. Dimensions of fastners, posts and rail elements have been converted from metric units into their present form.
- The Recycled Plastic Block or Offset Block shall be approved by the State.
- All new guardrail systems (system consists of total length of guardrail including both end treatments) shall include the Additional Paved Area.
- After the guardrail posts are installed in the paved area, the Contractor shall fill/seal around each guardrail post and all cracks in the paved area caused during the guardrail post installation. If required by the inspector/engineer, the Contractor shall tamper the paved area around the guardrail post prior to filling/sealing. All costs associated with this work shall not be paid for separately, but shall be considered incidental to the various guardrail items.
- New A.C. pavement at guardrails shall extend 6' longitudinally beyond terminal ends unless noted otherwise on plans.
- Reflector Markers (RM-5) mounted on guardrails shall be spaced every 25 feet. RM-5's shall not be installed on Terminal Sections. Furnishing and installing of each RM-5 shall be considered incidental to the adjacent guardrail system.

GUARDRAIL TYPE	DIMENSION	
	H	A *
Strong Post w/W Beam	1'-9 <sup>5</sup> / <sub>8</sub> "	1'-6"
Rubrail	2'-0"	1'-6"
Modified Thrie Beam	2'-0"	2'-0"

\* Unless noted otherwise on plans.

STATE OF HAWAII

DEPARTMENT OF TRANSPORTATION

HIGHWAYS DIVISION

GUARDRAIL DETAILS & NOTES

KAUMUALII HIGHWAY

Guardrail and Shoulder Improvements

Hanapepe to Mana

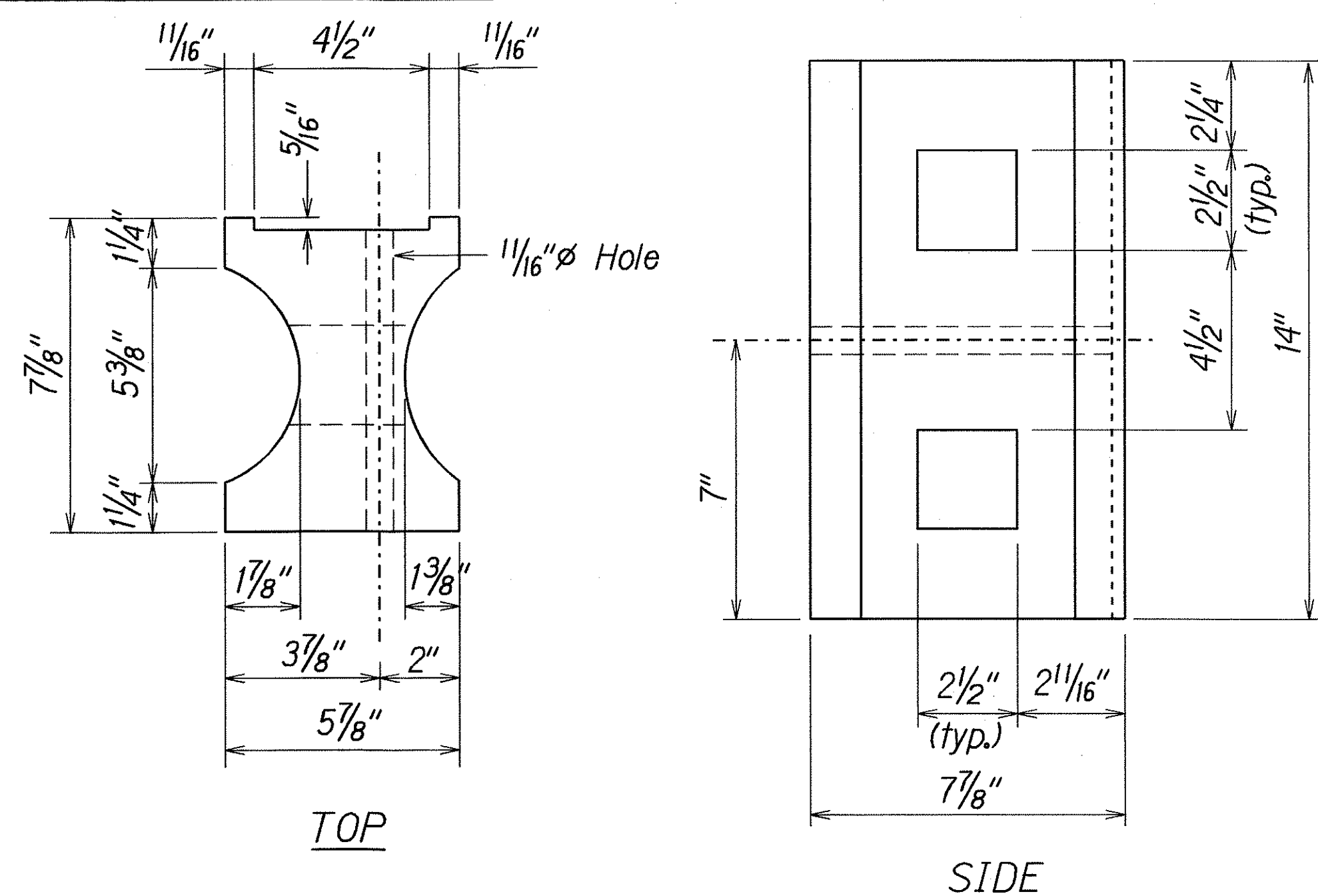
Fed. Aid Project No. STP-050-1(25)

Scale: NTS

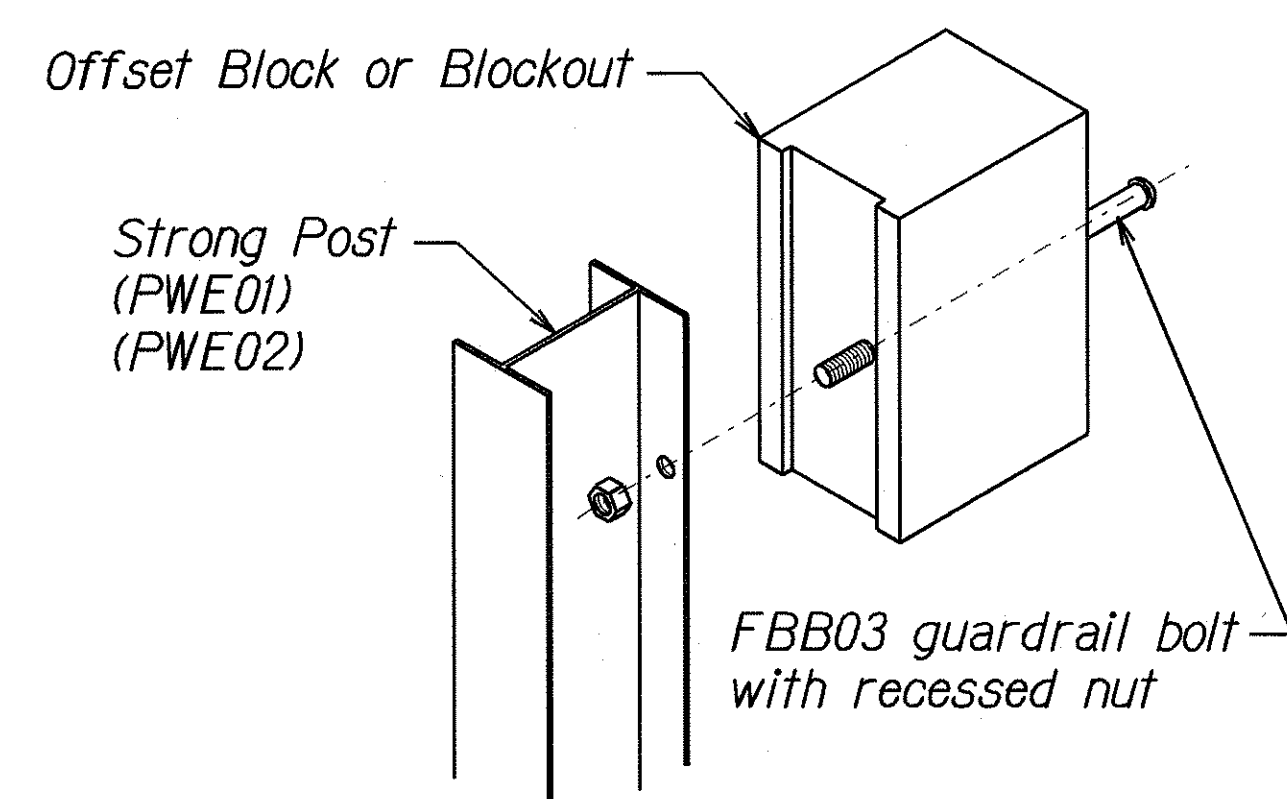
Date: July 2002

SHEET No. 1 OF 1

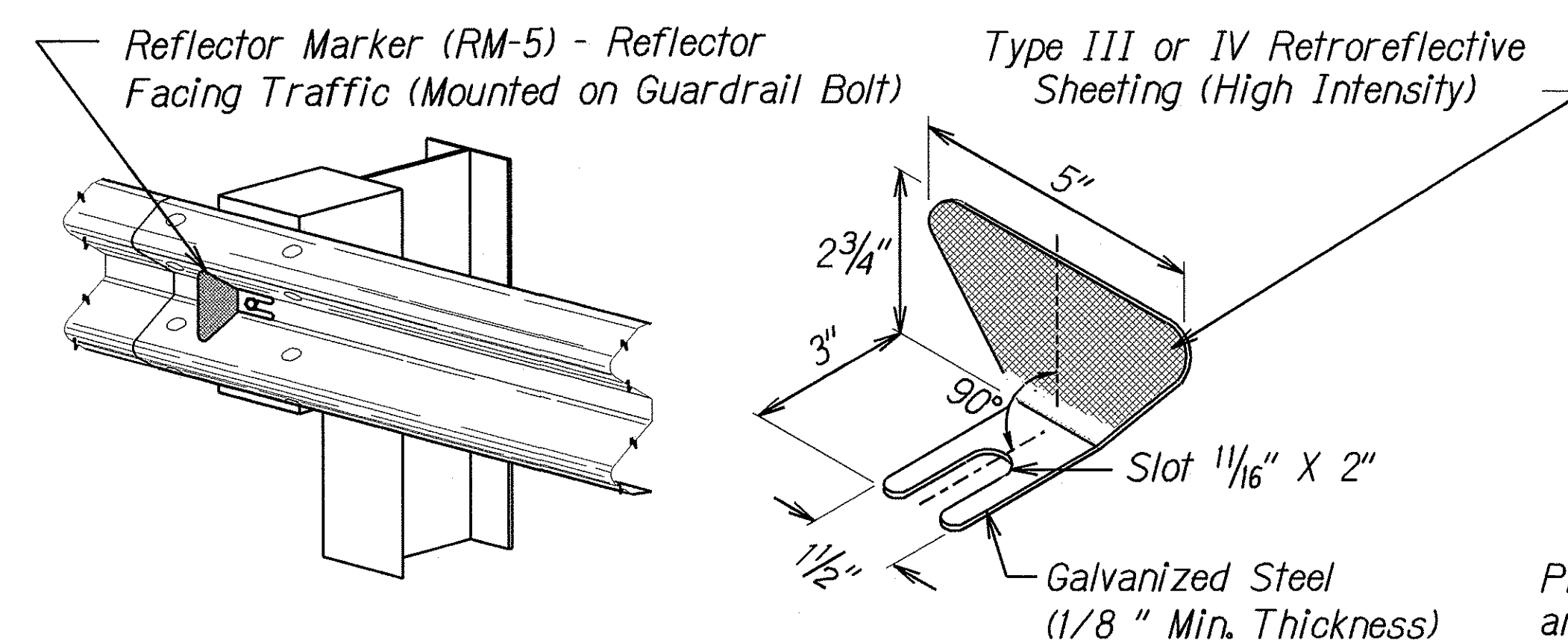
SHEETS



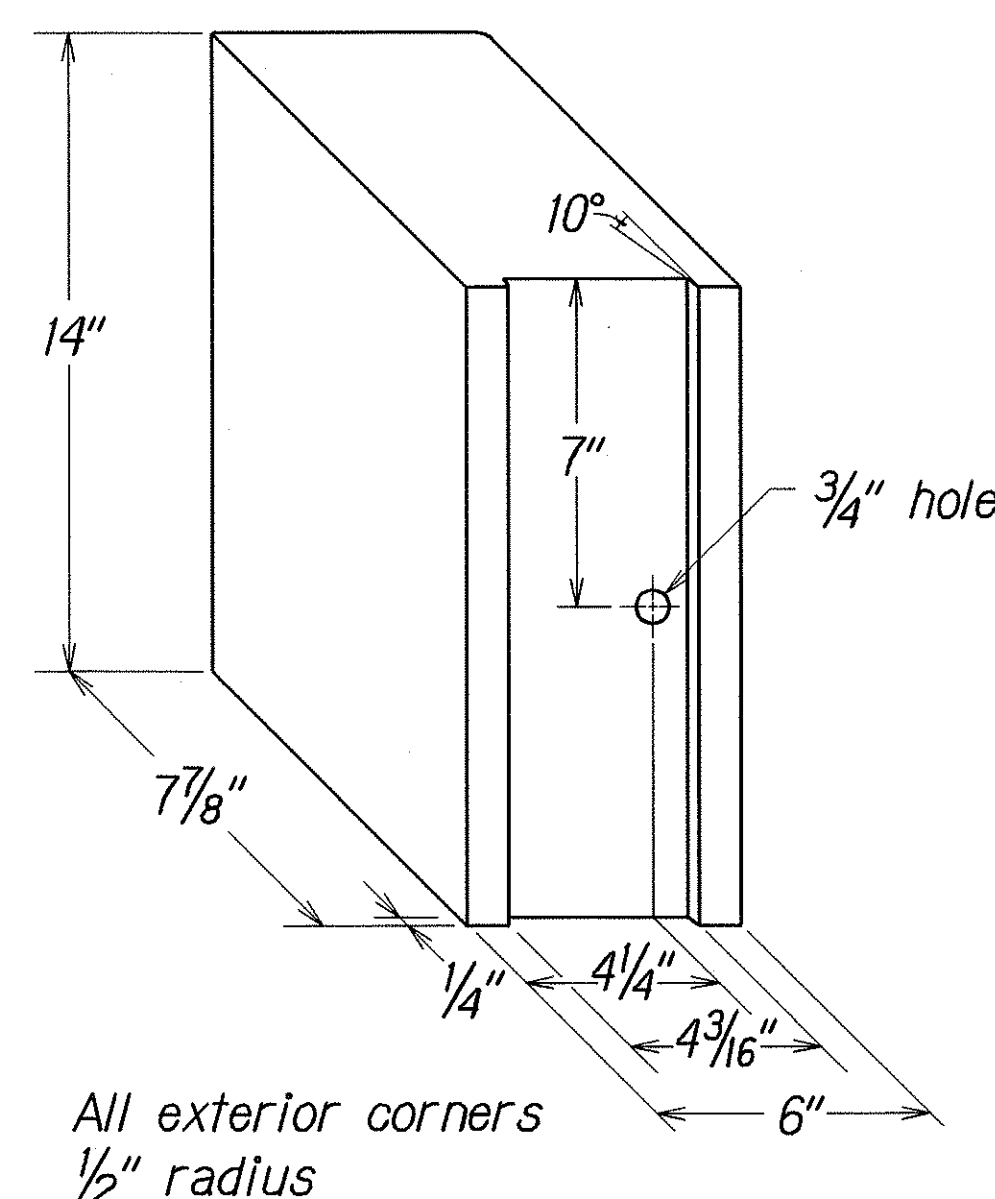
RECYCLED PLASTIC BLOCKOUT (TYPE I)



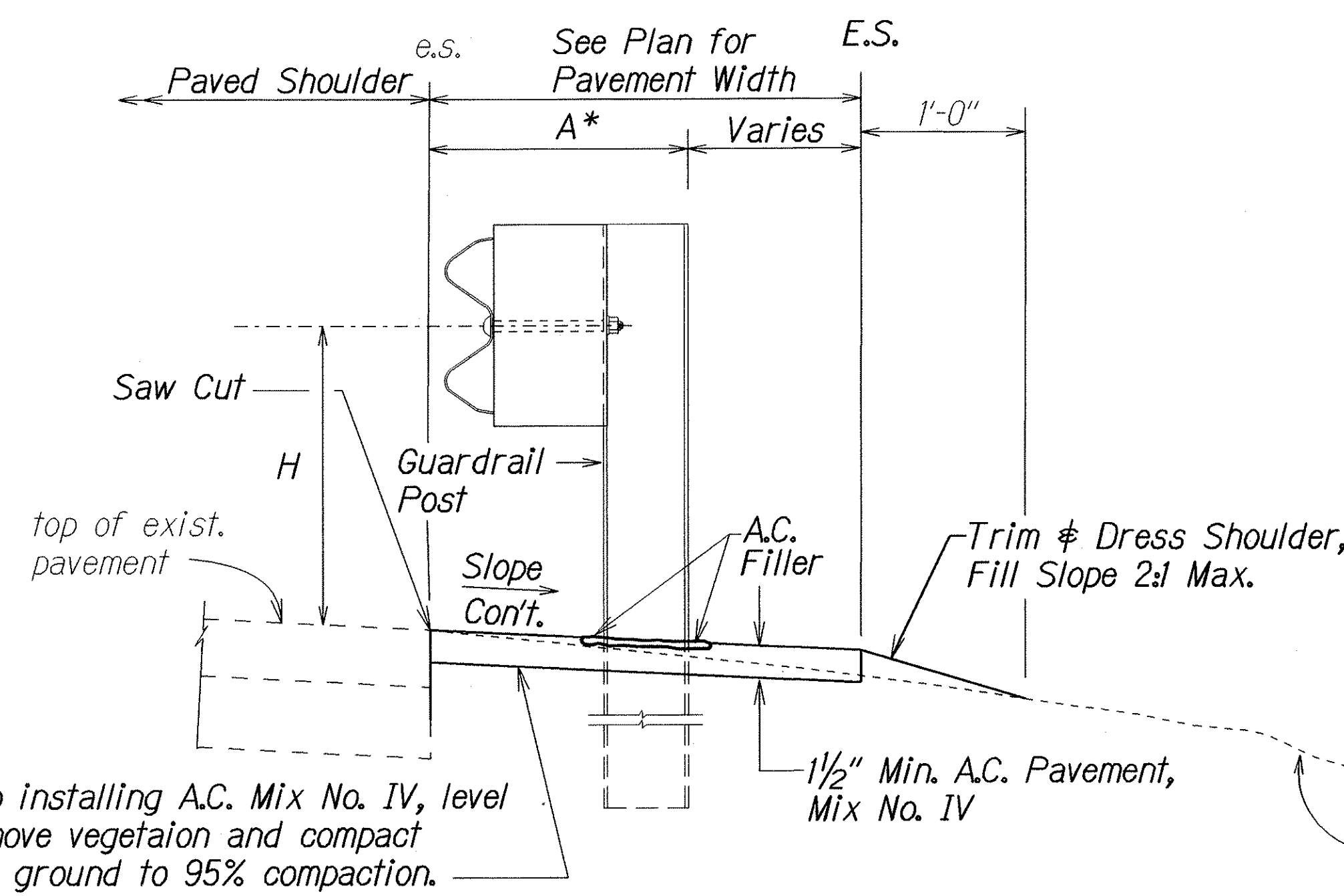
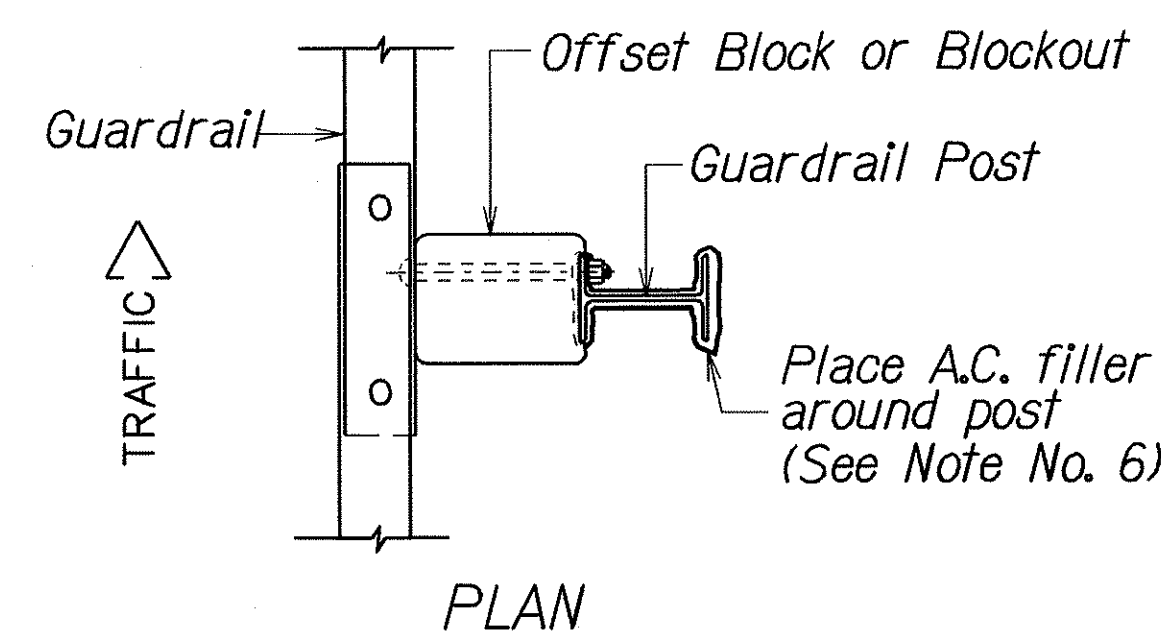
STEEL POST AND BLOCK DETAIL



REFLECTOR MARKER (RM-5) DETAIL AND TYPICAL INSTALLATION



RECYCLED POLYETHYLENE  
OFFSET BLOCK (TYPE II)



TYPICAL GUARDRAIL INSTALLATION

DATE	July 2002
SURVEY PLOTTED BY	
DRAWN BY	J. K.
TRACED BY	J. K.
DESIGNED BY	J. K.
CHECKED BY	J. K.
ORIGINAL PLAN	
NOTE BOOK	
FILE	
STANDARD	