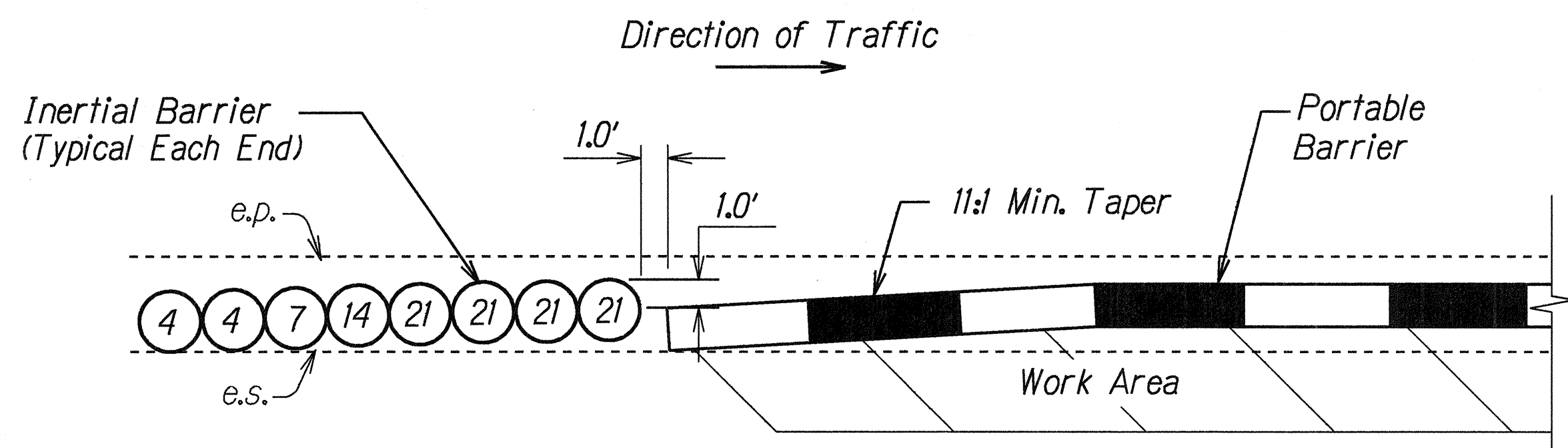


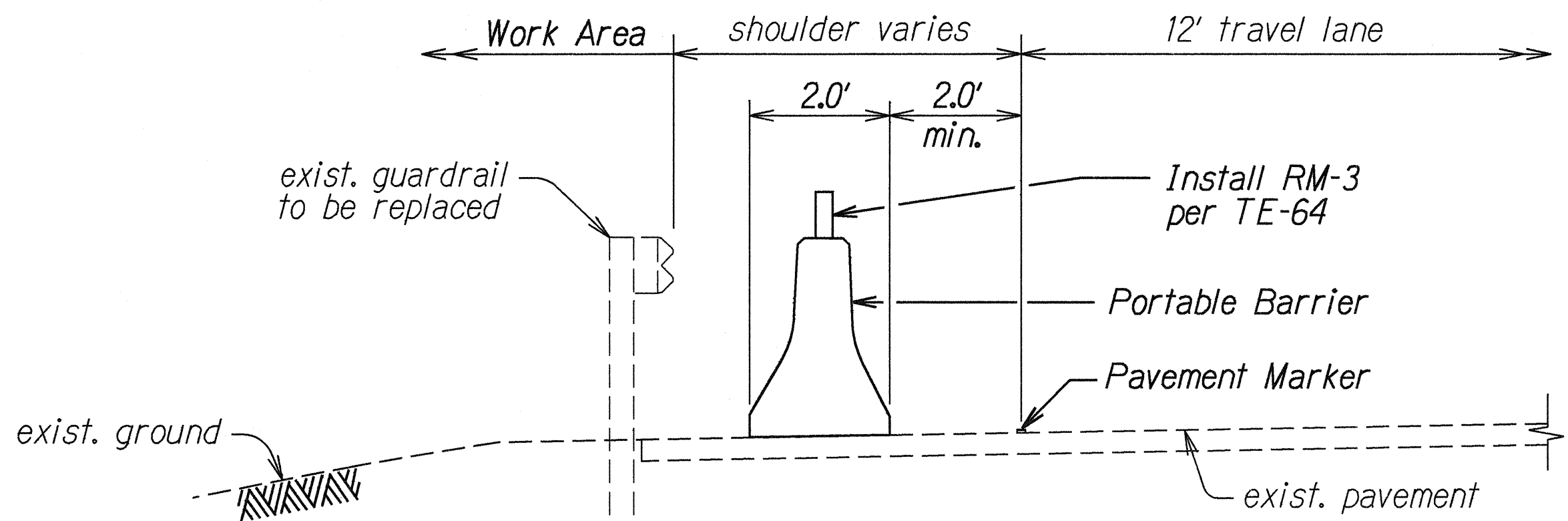
FED. ROAD DIST. NO.	STATE	PROJ. NO.	FISCAL YEAR	SHEET NO.	TOTAL SHEETS
HAWAII	HAW.	50C-01-00M	2000	10	24



NOTE: The numbers inside the circle indicate weight of sand in 100 lb unit. Installation shall conform to Manufacturer's recommendations.

TYPICAL DETAIL
8-MODULE INERTIAL BARRIER
Not To Scale

- NOTES:
1. Installation of portable physical barriers shall conform to Manufacturer's recommendations.
 2. Physical barriers shall be required whenever guardrails have been removed and will not be reinstalled at the end of the work day. See General Note No. 21 on Plan Sht. No. 3.
 3. Physical barriers shall be either portable concrete barriers or portable water-filled barriers. Installation of portable water-filled barriers shall conform to Manufacturer's recommendations as dictated by design speed and field conditions.
 4. Providing, transporting, placing, maintaining, relocating and removing physical barriers shall be considered incidental to the various items of work. See Section 645, TRAFFIC CONTROL DEVICES of the Special Provisions.
 5. Ends of portable barriers shall be protected with Inertial Barriers as shown hereon. Furnishing, installing and maintaining inertial barriers shall be considered incidental to the various contract items.
 6. Furnishing, installing and maintaining reflector markers (RM-3) over the portable barriers shall be considered incidental to the various contract items.



TYPICAL DETAIL
PORTABLE BARRIER
Not To Scale

ORIGINAL PLAN	SURVEY PLOTTED BY	DATE
NOTED FOR	DRAWN BY E. Reyes	4-7-00
DESIGNED BY E. Reyes		
QUANTITIES BY		
CHECKED BY		

STATE OF HAWAII
DEPARTMENT OF TRANSPORTATION
HIGHWAYS DIVISION

PORTABLE PHYSICAL BARRIER

KAUMUALII HIGHWAY RESURFACING

Vicinity of Wahiawa Bridge

to Laulea Street

Project No. 50C-01-00M

Scale: As Shown

Date: April, 2000

SHEET No. 1 OF 1 SHEETS