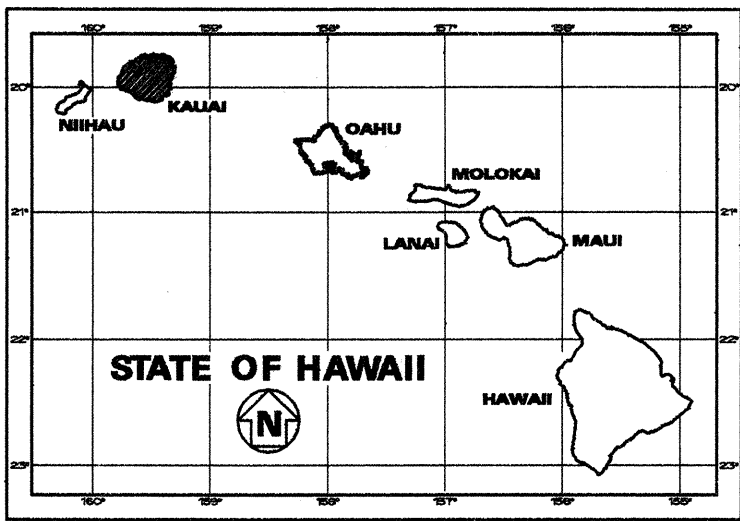


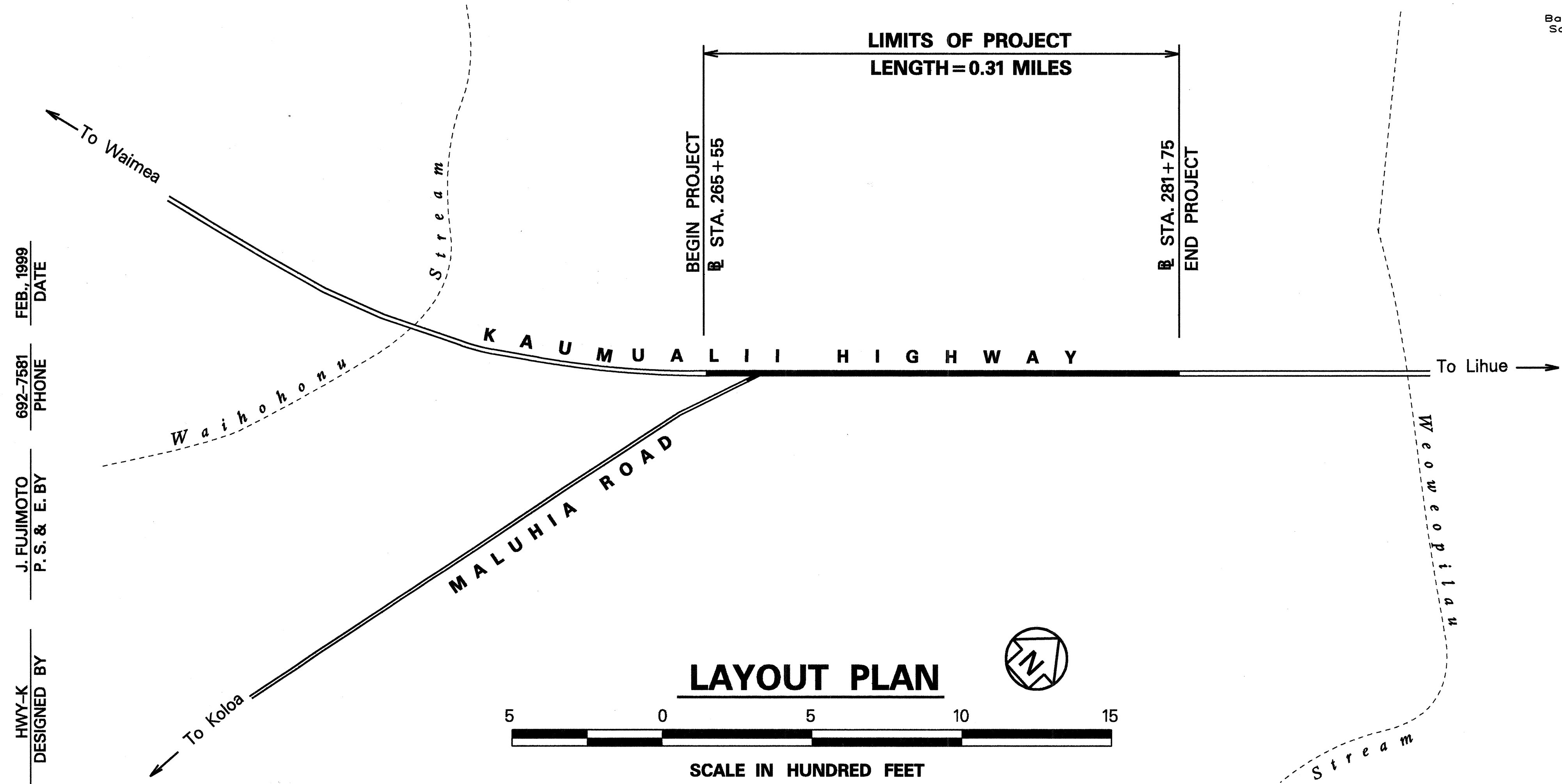
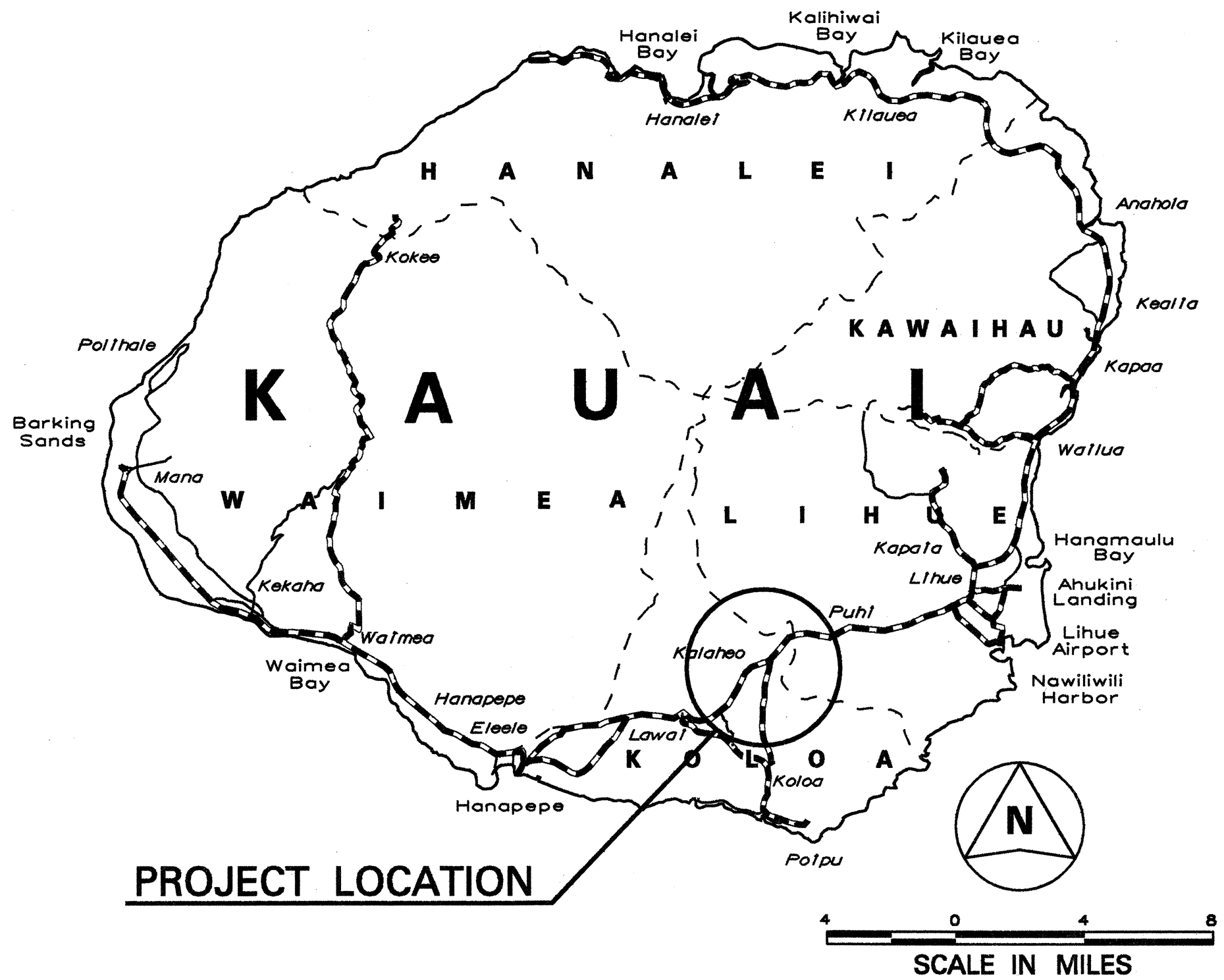
INDEX TO DRAWINGS	
SHEET NO.	DESCRIPTION
1	TITLE SHEET
2	STANDARD PLANS SUMMARY
3	GENERAL NOTES & LEGEND
4 - 5	TYPICAL SECTIONS
6 - 7	ROADWAY PLAN
8	GEOMETRICS AND ROAD GRADES
9 - 10	MISCELLANEOUS DETAILS
11 - 12	DRAINAGE DETAILS
13 - 18	PAVEMENT MARKING AND SIGNING PLANS
19 - 21	CROSS SECTIONS

DIST. NO.	STATE	PROJ. NO.	FISCAL YEAR	SHEET NO.	TOTAL SHEETS
HAWAII	HAW.	50D-01-98	1999	1	21



STATE OF HAWAII  
DEPARTMENT OF TRANSPORTATION  
HIGHWAYS DIVISION  
HONOLULU, HAWAII  
"AS-BUILT"  
PLANS FOR  
**KAUMUALII HIGHWAY**  
**ACCELERATION LANE AT MALUHIA ROAD**  
**PROJECT NO. 50D-01-98**

DISTRICT OF KOLOA  
ISLAND OF KAUAI



— — — — — FEDERAL AID PROJECTS PREVIOUSLY CONSTRUCTED  
OR UNDER CONSTRUCTION

MILE POST 6.43 TO MILE POST 6.74

CHANGES MADE DURING CONSTRUCTION HAVE BEEN  
INCORPORATED ON THESE PLANS EXCEPT CHANGES  
IN THE ORIGINAL THEORETICAL QUANTITIES. FOR  
ACTUAL QUANTITIES, REFER TO PROJECT LEDGER  
AND/OR COMPUTATION BOOK.

*Resident Engineer* 12/11/03  
DATE

DEPARTMENT OF TRANSPORTATION  
STATE OF HAWAII  
APPROVED: *Dir. of Transportation* 4/27/98  
DATE  
DIR. OF TRANSPORTATION