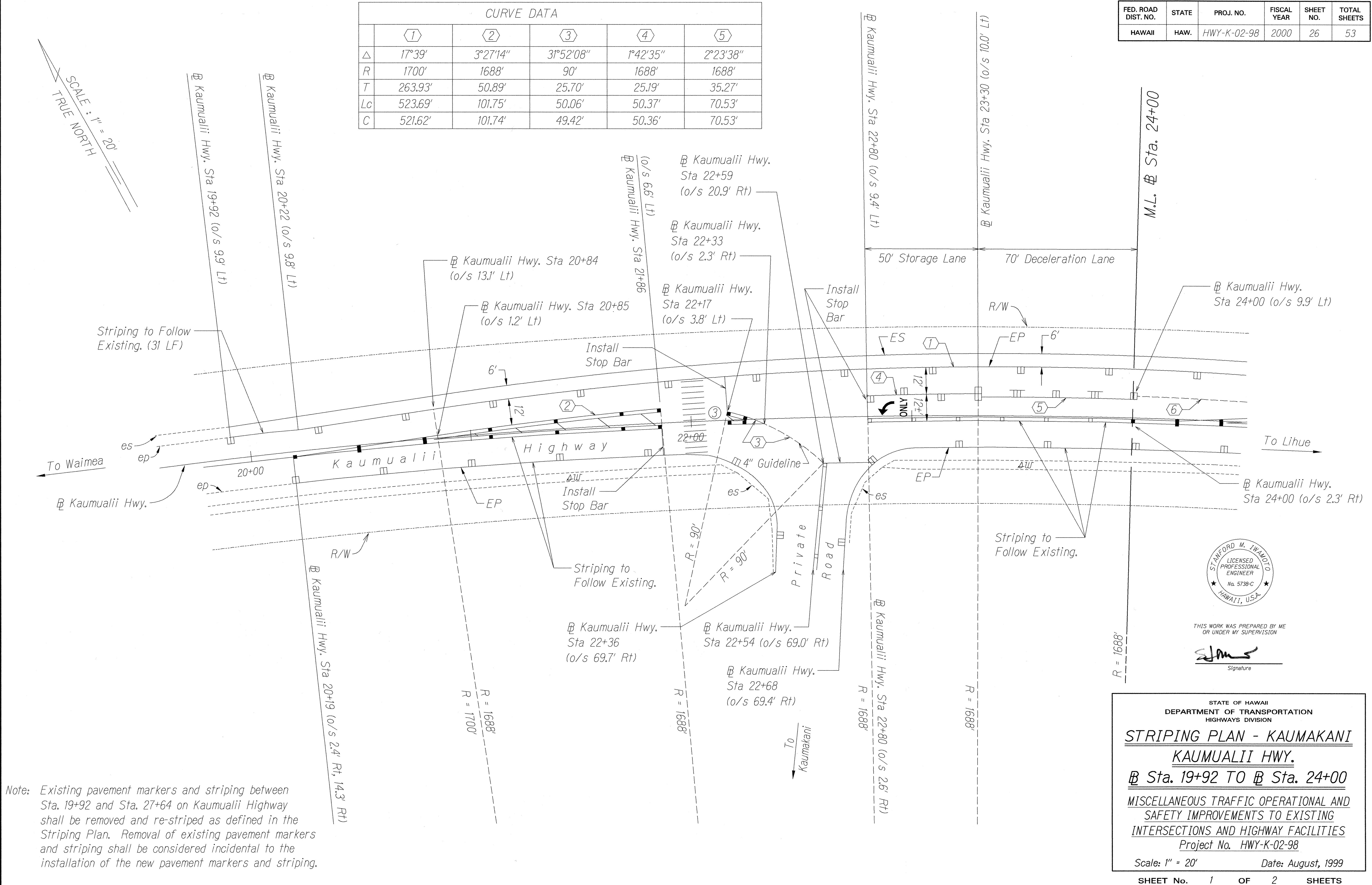
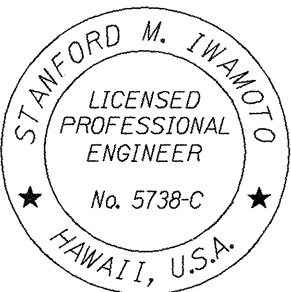
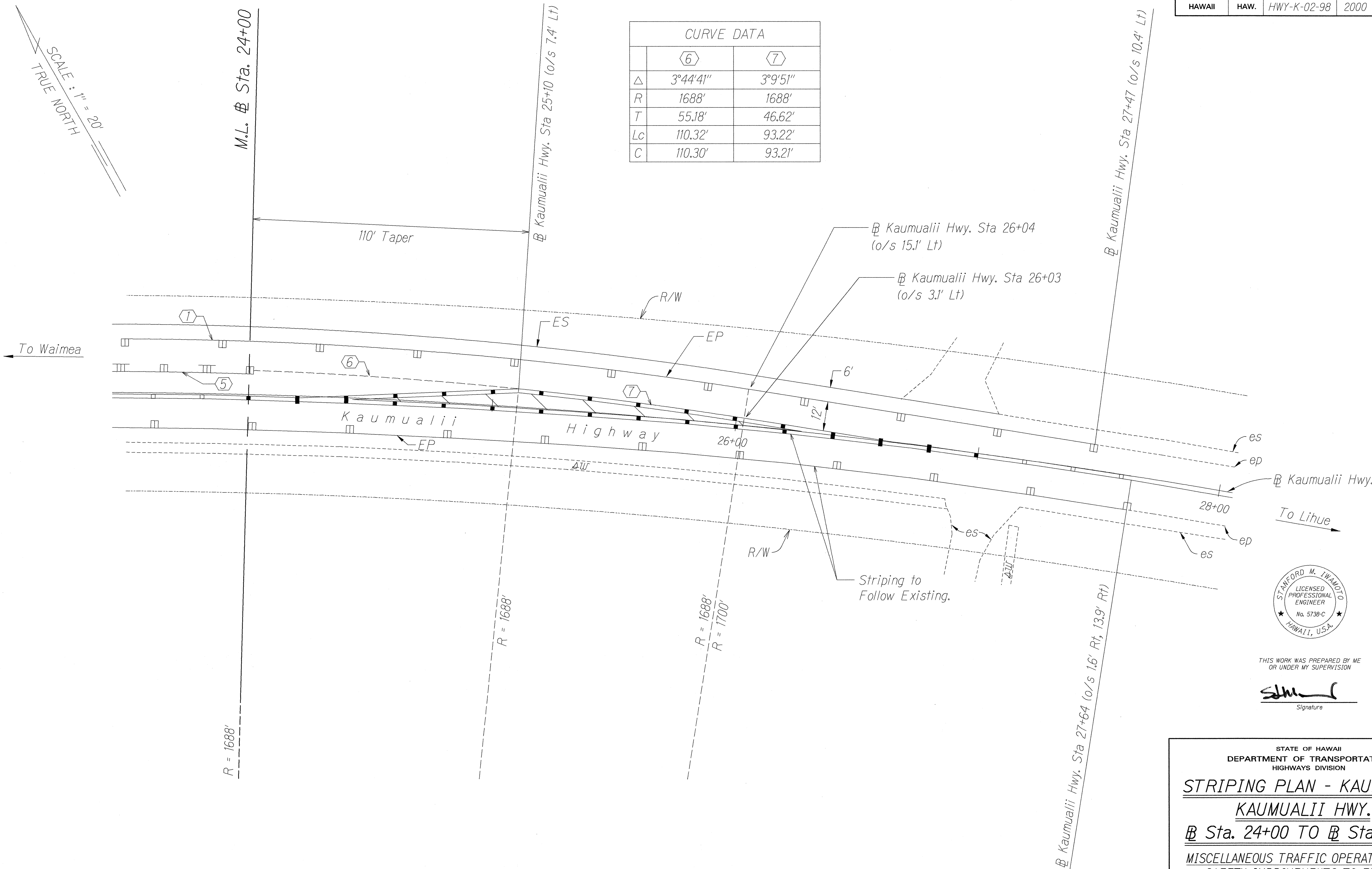


FED. ROAD DIST. NO.	STATE	PROJ. NO.	FISCAL YEAR	SHEET NO.	TOTAL SHEETS
HAWAII	HAW.	HWY-K-02-98	2000	26	53



FED. ROAD DIST. NO.	STATE	PROJ. NO.	FISCAL YEAR	SHEET NO.	TOTAL SHEETS
HAWAII	HAW.	HWY-K-02-98	2000	27	53

CURVE DATA		
	6	7
Δ	3°44'41"	3°9'51"
R	1688'	1688'
T	55.18'	46.62'
Lc	110.32'	93.22'
C	110.30'	93.21'



THIS WORK WAS PREPARED BY ME
OR UNDER MY SUPERVISION

[Signature]
Signature

STATE OF HAWAII
DEPARTMENT OF TRANSPORTATION
HIGHWAYS DIVISION

STRIPING PLAN - KAUMAKANI
KAUMUALII HWY.
Sta. 24+00 TO Sta. 27+64

MISCELLANEOUS TRAFFIC OPERATIONAL AND
SAFETY IMPROVEMENTS TO EXISTING
INTERSECTIONS AND HIGHWAY FACILITIES
Project No. HWY-K-02-98

Scale: 1" = 20' Date: August, 1999

SHEET No. 2 OF 2 SHEETS

ORIGINAL PLAN	SURVEY PLOTTED BY	DATE
NOTE BOOK	DRAWN BY	DATE
N.	DESIGNED BY	DATE
	QUANTITIES BY	DATE
	CHECKED BY	DATE