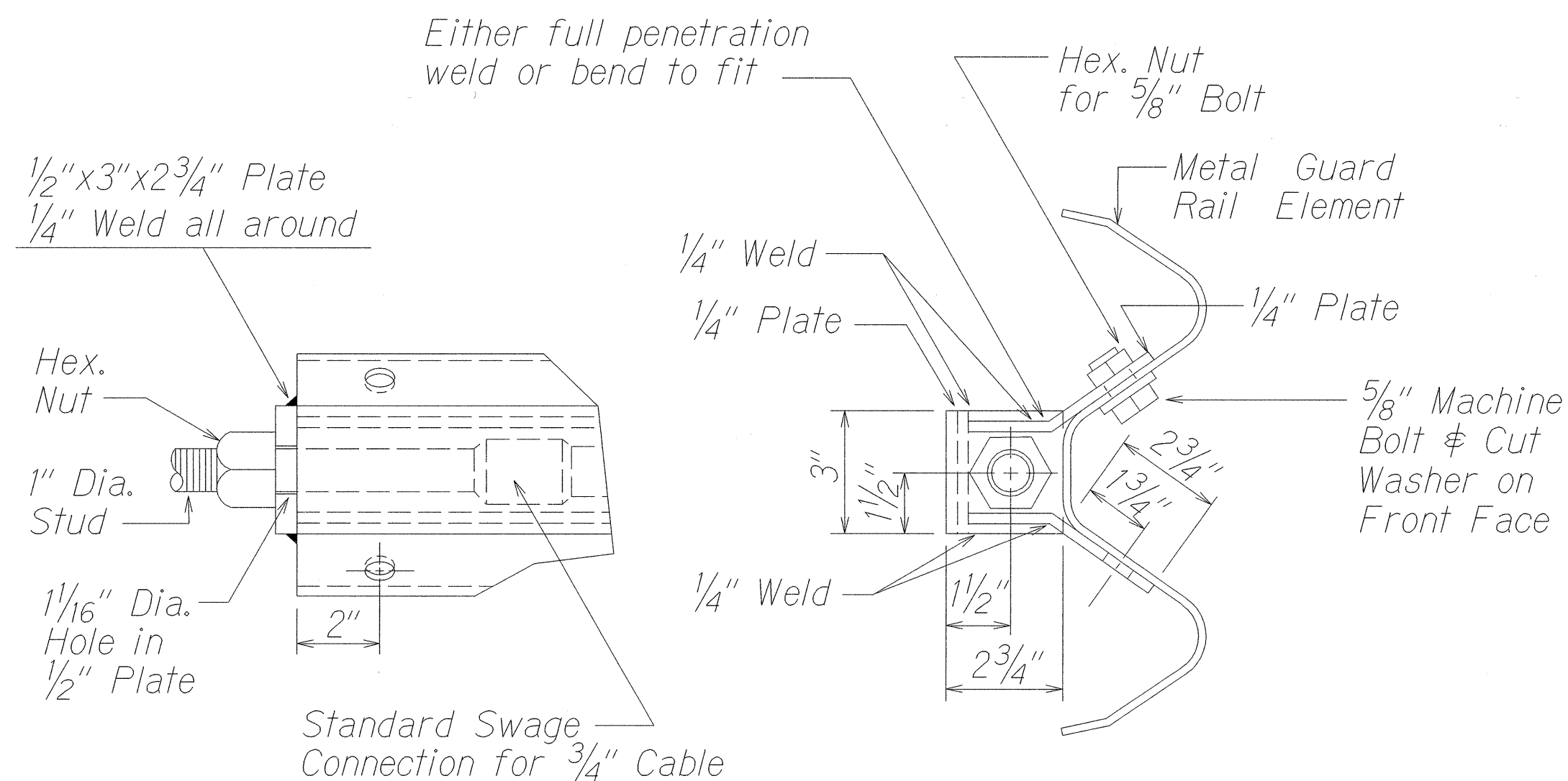
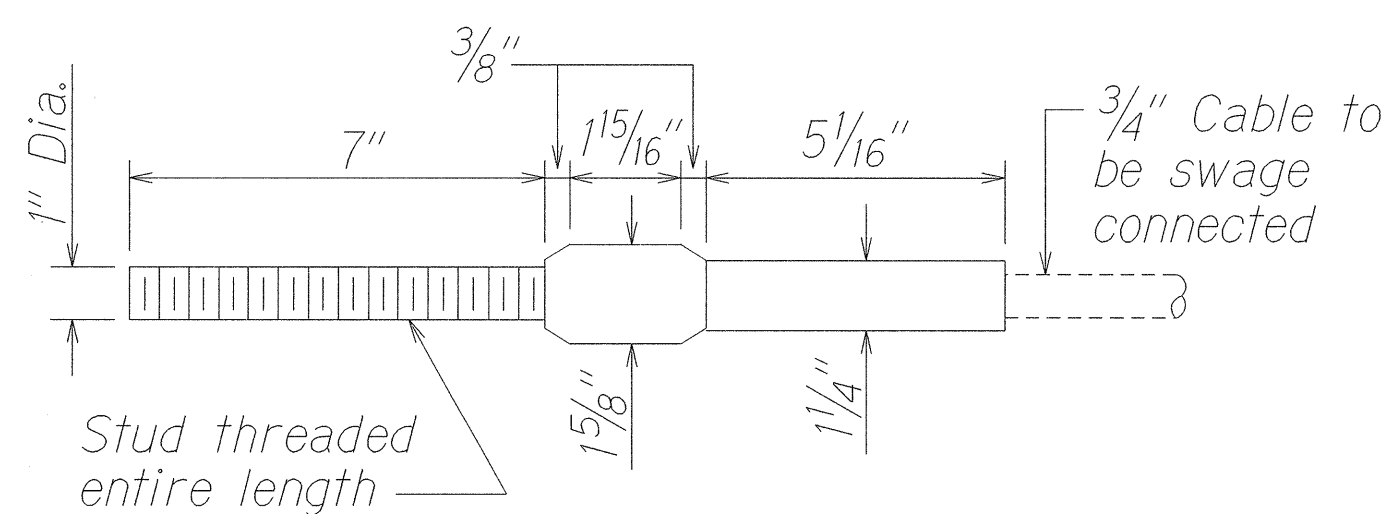


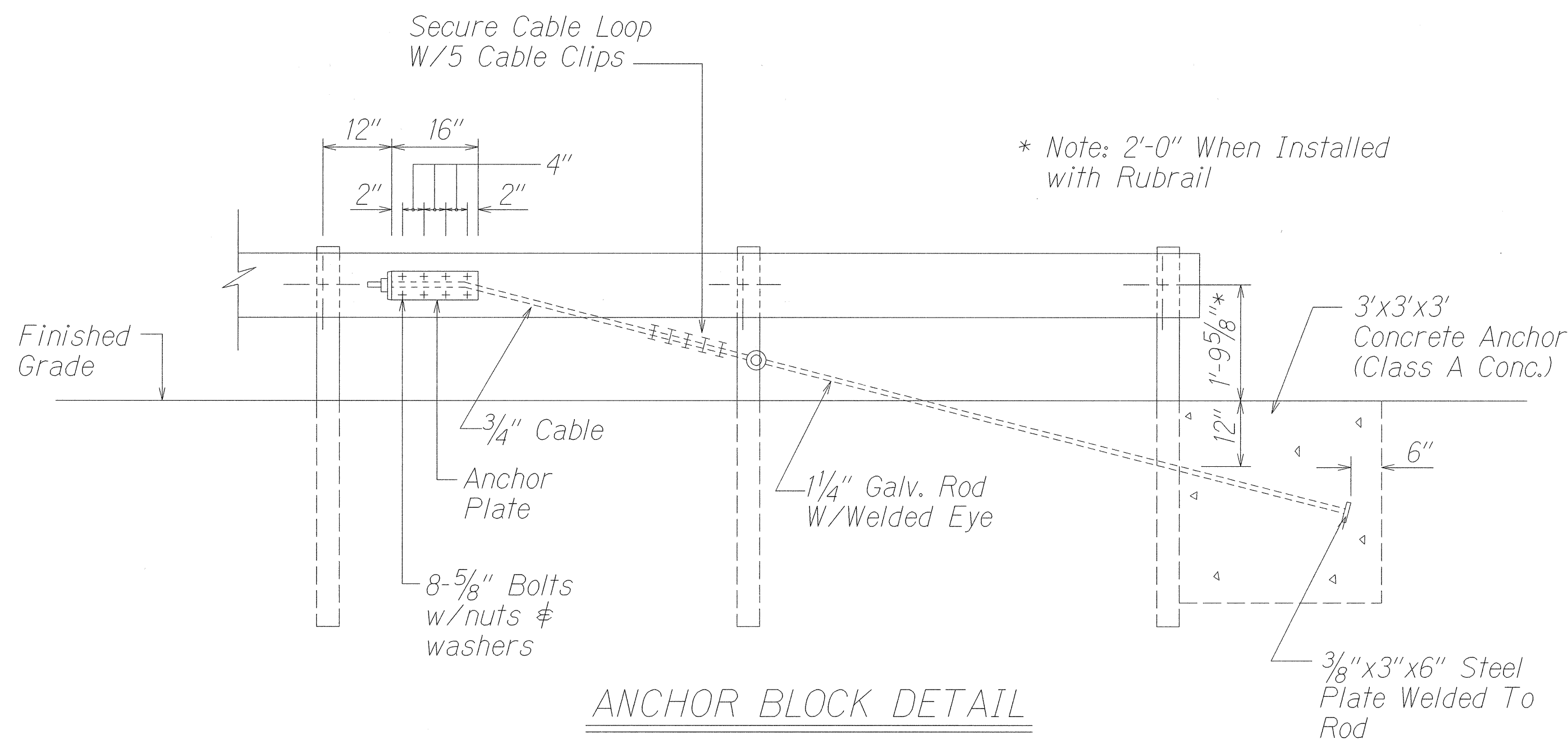
FED. ROAD DIST. NO.	STATE	PROJ. NO.	FISCAL YEAR	SHEET NO.	TOTAL SHEETS
HAWAII	HAW.	50CD-02-00M	2001	17	33



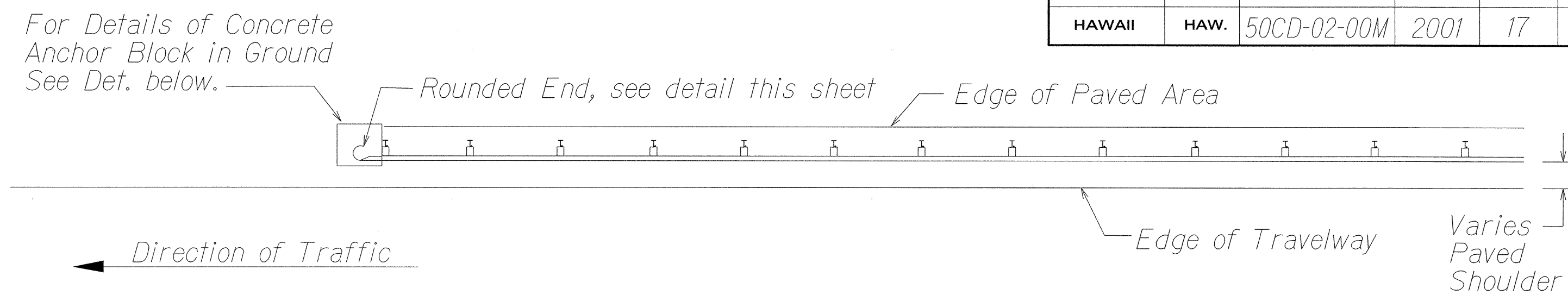
ANCHOR PLATE DETAILS



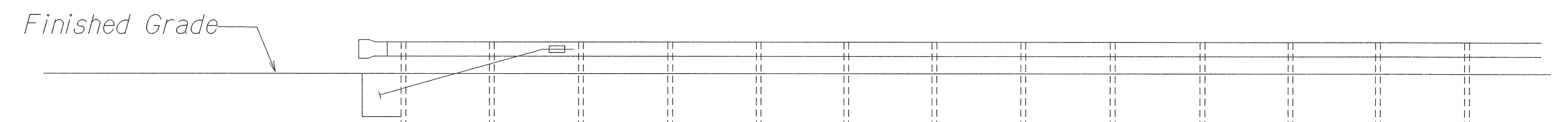
STANDARD SWAGED FITTING AND STUD



ANCHOR BLOCK DETAIL



PLAN

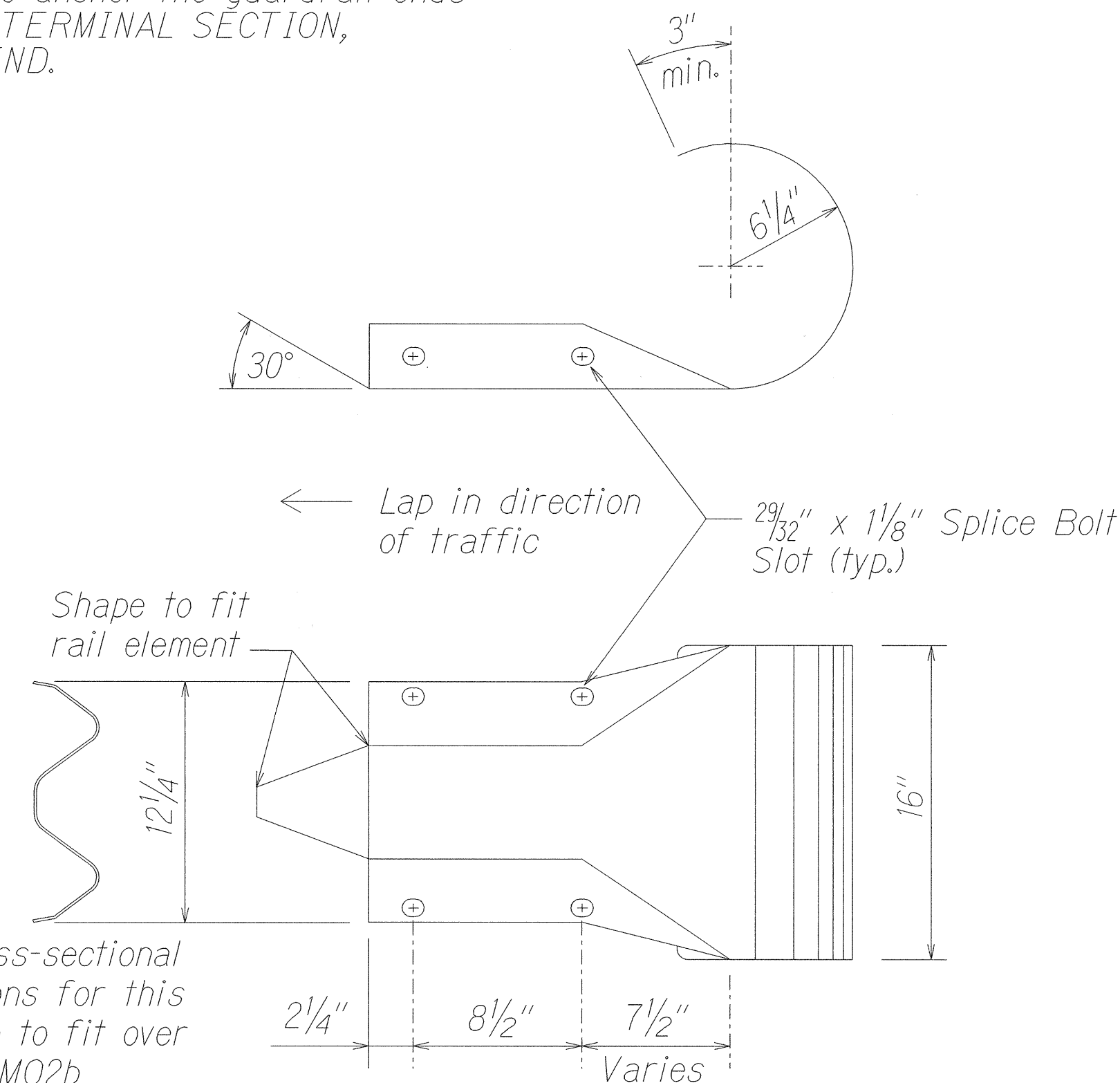


ELEVATION

MODIFIED TYPE "G" FLARE END TERMINAL

NOTES:

1. During construction, the Contractor shall layout the proposed Type "G" Modified End Terminal and receive approval from the Construction Engineer prior to installation.
2. Strong Post, Offset Block or Blockout, and W-Beam shall be paid under Item No. 606.3110 - GUARDRAIL, SINGLE WITH STRONG POST.
3. Concrete anchor block, excavation, anchor rod, rounded end and miscellaneous appurtenances necessary to anchor the guardrail ends shall be paid under Item No. 606.7130 - TERMINAL SECTION, MODIFIED TYPE "G" WITH ROUNDED END.



W-BEAM END SECTION (ROUNDED RWE03a)

DESIGNATOR	BASE METAL THICKNESS
RWE03a	12 Gauge

STATE OF HAWAII
DEPARTMENT OF TRANSPORTATION
HIGHWAYS DIVISION

GUARDRAIL DETAILS

KAUMUALII HIGHWAY RESURFACING
Vicinity of Omao Road to Koloa Road
Project No. 50CD-02-00M

Scale: Not to Scale Date: August, 2000

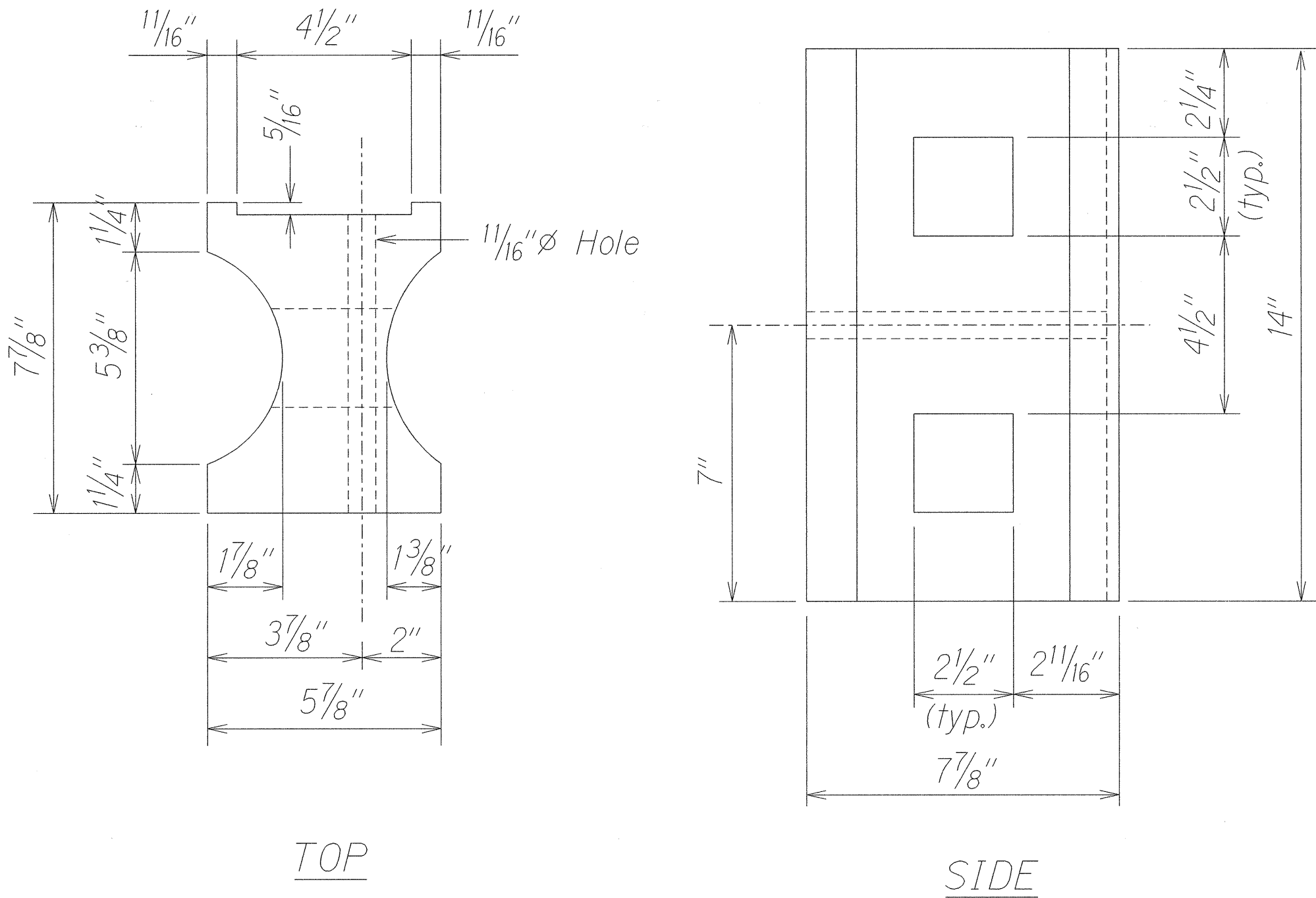
SHEET No. 1 OF 2 SHEETS

ORIGINAL PLAN	DATE
NOTE BOOK	DESIGNED BY
QUANTITIES BY	CHECKED BY
NO.	

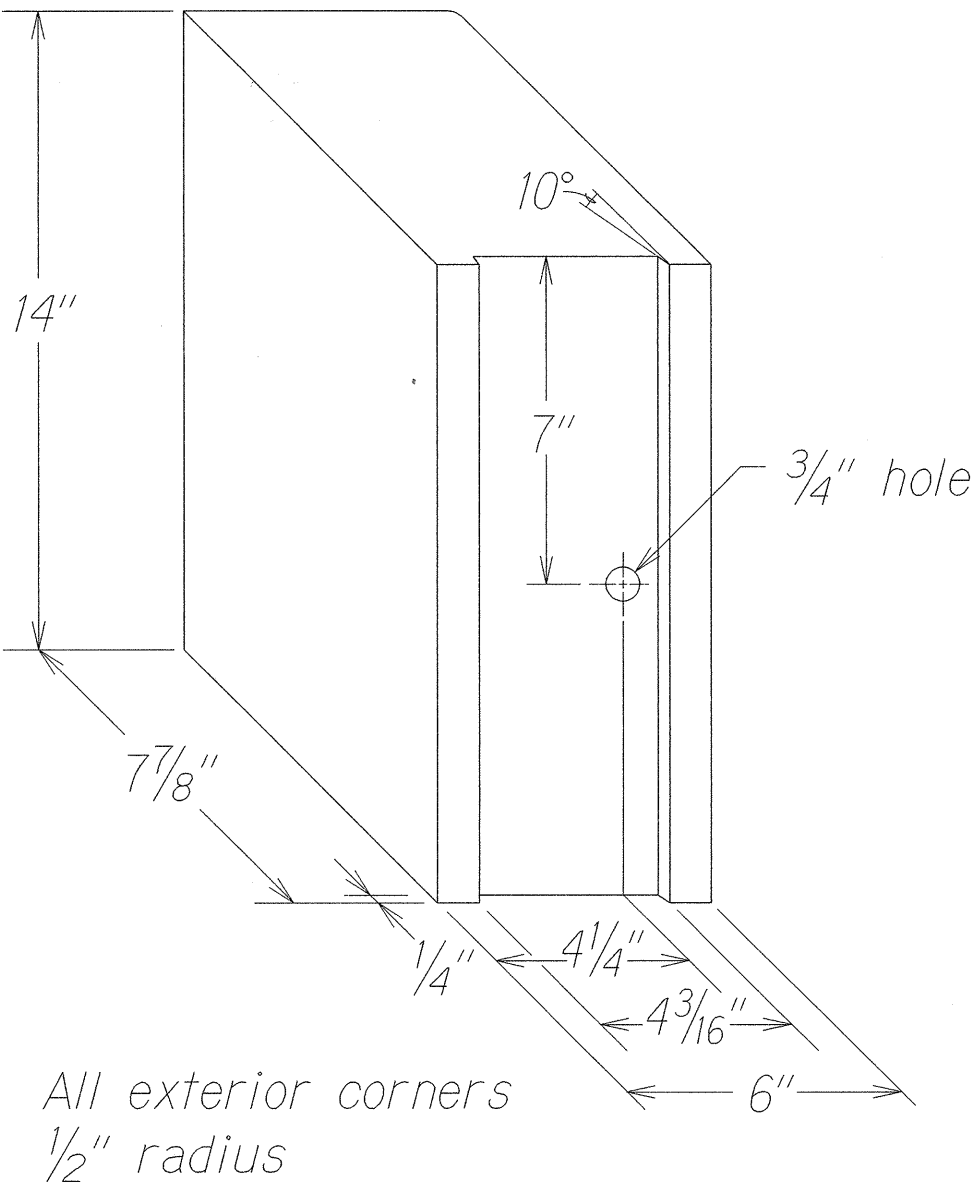
FED. ROAD DIST. NO.	STATE	PROJ. NO.	FISCAL YEAR	SHEET NO.	TOTAL SHEETS
HAWAII	HAW.	50CD-02-00M	2001	18	33

GENERAL NOTES

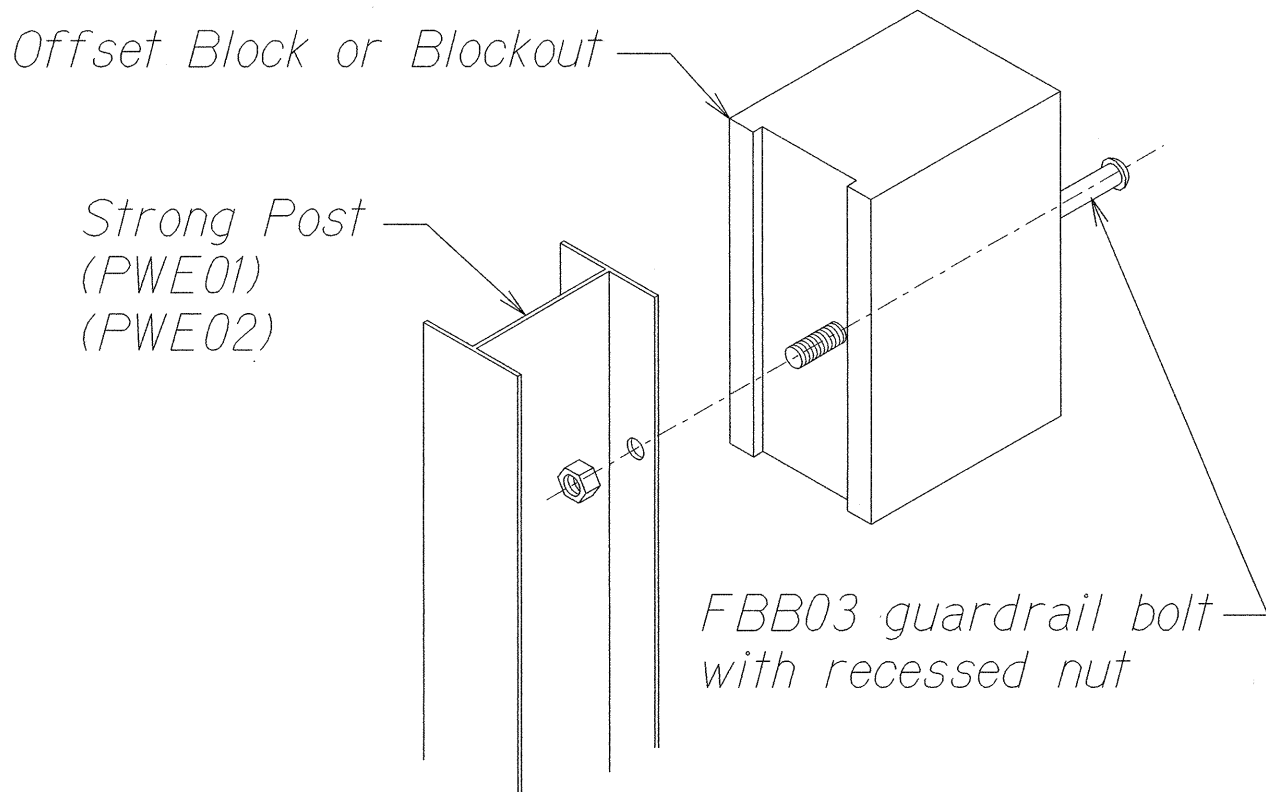
- All hardware, posts and fasteners shall be hot-dip zinc coated galvanized after fabrication. No punching, drilling or cutting will be permitted after galvanizing.
- Where conditions require, special post lengths in increments of 6 inches may be specified.
- All fasteners, posts, and rail elements (i.e. FBB03, PWE01, RWM02b, etc.) shall conform to the latest edition and amendments of "A Guide to Standardized Highway Barrier Rail Hardware," a report prepared and approved by the AASHTO-AGC-ARTBA Joint Cooperative Committee, Subcommittee On New Highway Materials, Task Force 13 Report. Dimensions of fasteners, posts and rail elements have been converted from metric units into their present form.
- The Recycled Plastic Block or Offset Block shall be approved by the State.
- After the guardrail posts are installed in the paved area, the Contractor shall place A.C. filler around the guardrail post and seal all cracks in the paved area that was caused during the guardrail post installation. If required by the inspector/engineer, the Contractor shall tamper the paved area around the guardrail post prior to placing A.C. filler. The cost for this work shall not be paid for separately, but shall be considered incidental to the various guardrail items.
- When standards for the fill slope area cannot be met, a site specific, engineer approved design may be used.
- Prior to installing Aggregate Base Course and A.C. Pavement, Mix No. IV, level and remove vegetation and compact existing ground to 95% compaction. New A.C. pavement at guardrails shall extend 6' longitudinally beyond terminal ends, unless otherwise noted.
- Reflector Markers (RM-5) mounted on guardrails shall be spaced every 50'-0". RM-5's shall not be installed on the FLEAT-350 Terminal Sections.



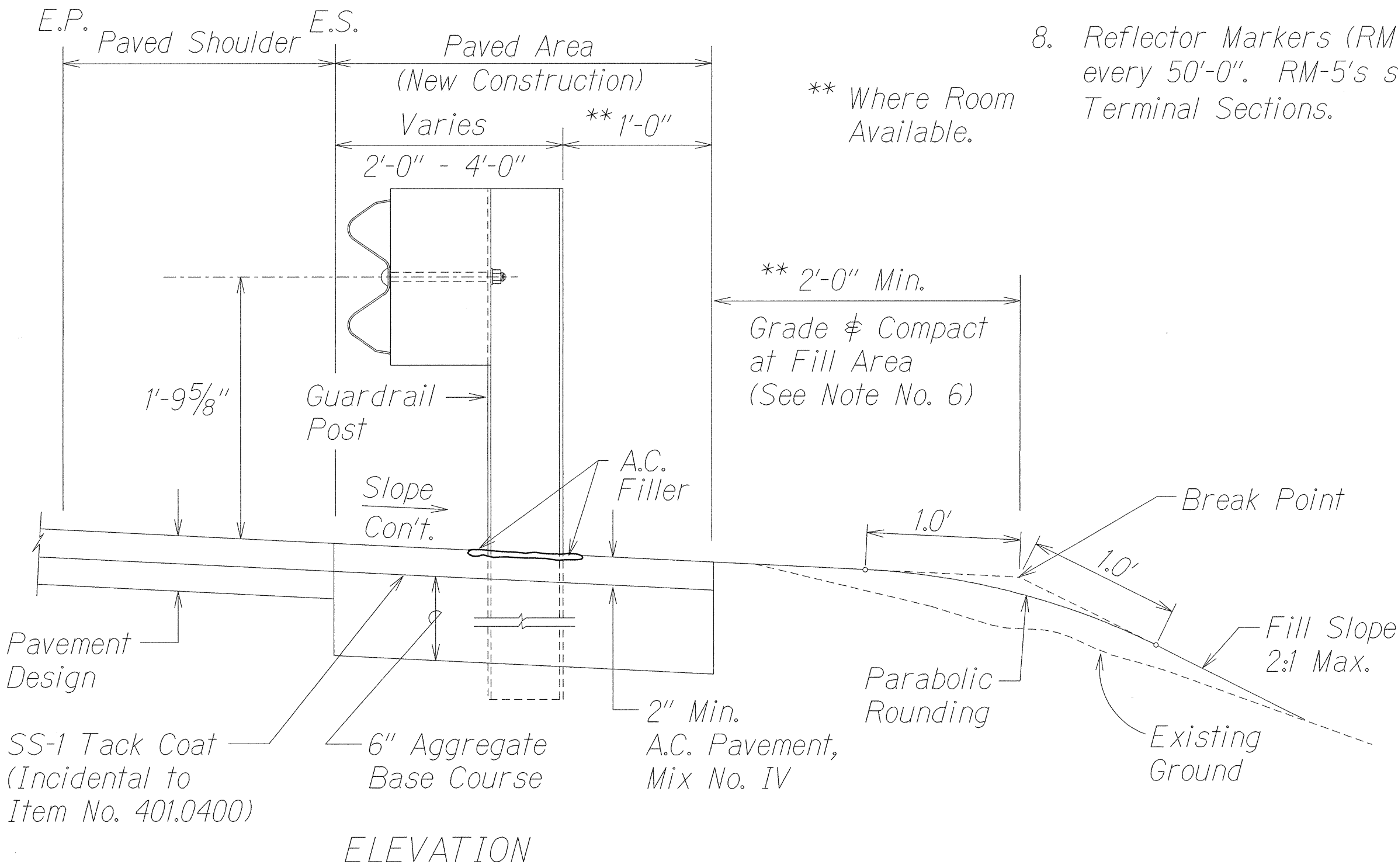
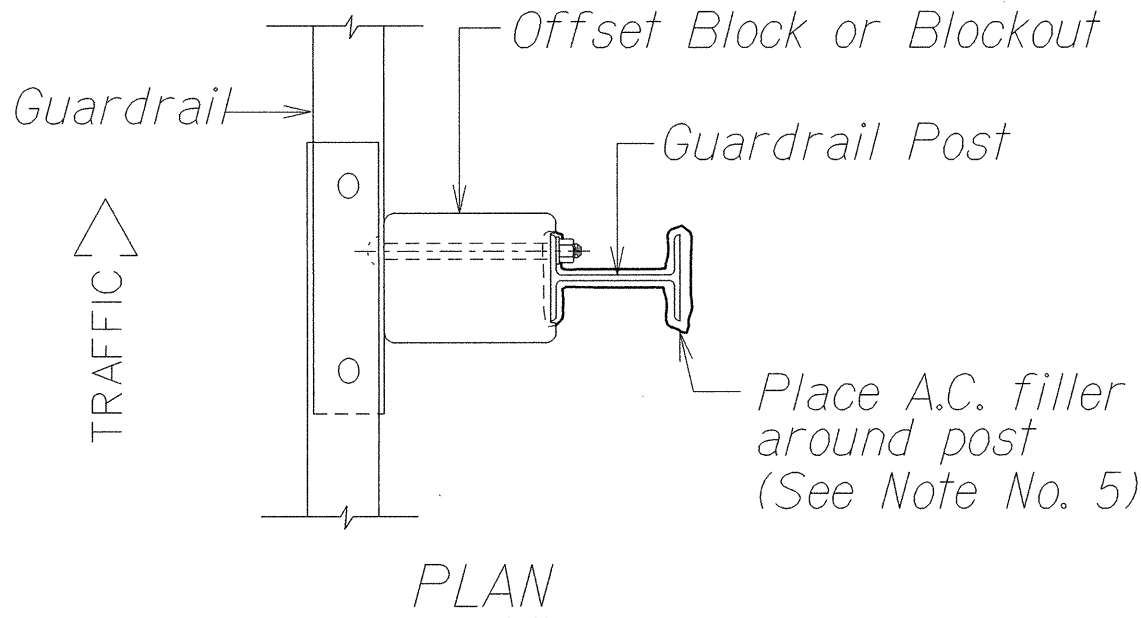
TOP
SIDE
RECYCLED PLASTIC BLOCKOUT (TYPE I)



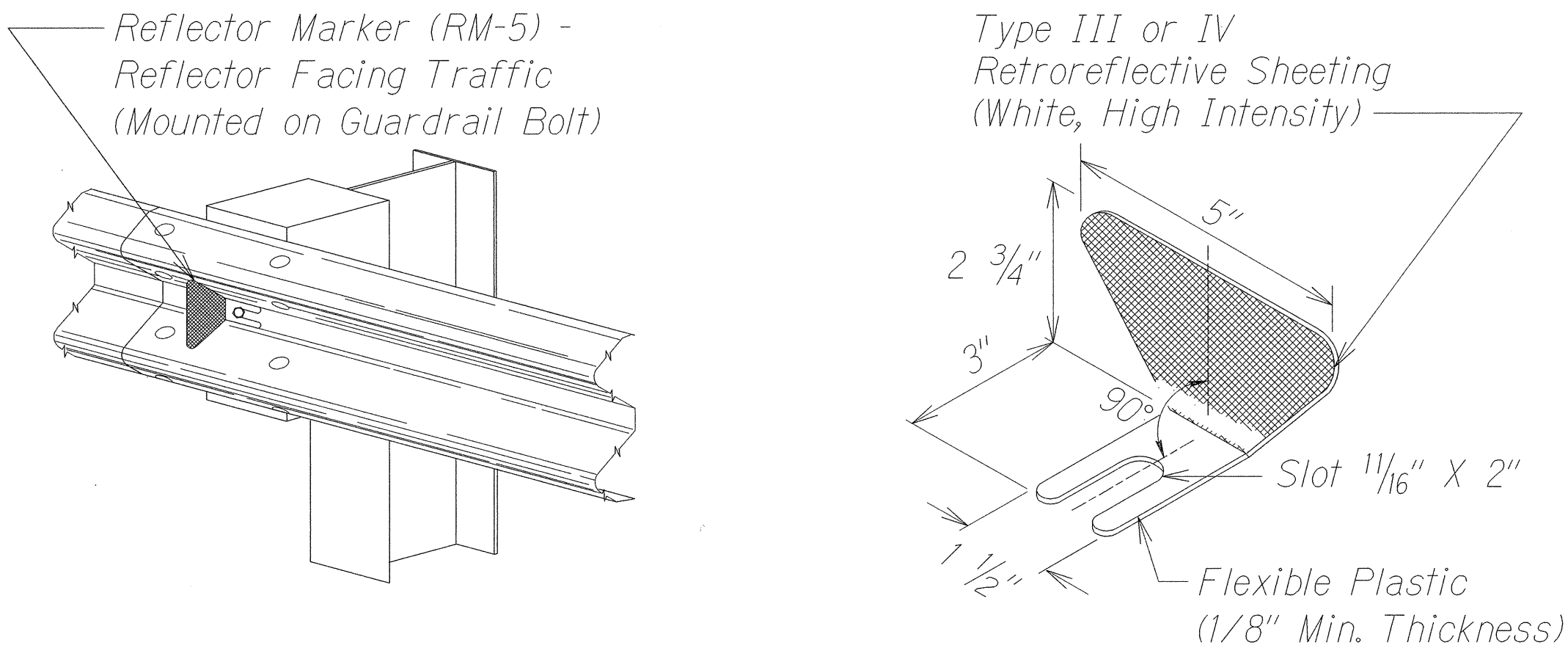
RECYCLED POLYETHYLENE
OFFSET BLOCK (TYPE II)



Exploded View
(Rail, washer and reflector not shown)
STEEL POST AND BLOCK DETAIL



ELEVATION
TYPICAL GUARDRAIL INSTALLATION



REFLECTOR MARKER (RM-5) DETAIL AND TYPICAL INSTALLATION

DATE	_____
DESIGNED BY	_____
CHECKED BY	_____
QUANTITIES BY	_____
NOTED BY	_____
ORIGINAL PLAN	_____

STATE OF HAWAII
DEPARTMENT OF TRANSPORTATION
HIGHWAYS DIVISION

GUARDRAIL DETAILS & NOTES

KAUMUALII HIGHWAY RESURFACING
Vicinity of Omao Road to Koloa Road
Project No. 50CD-02-00M

Scale: Not to Scale Date: August, 2000

SHEET No. 2 OF 2 SHEETS