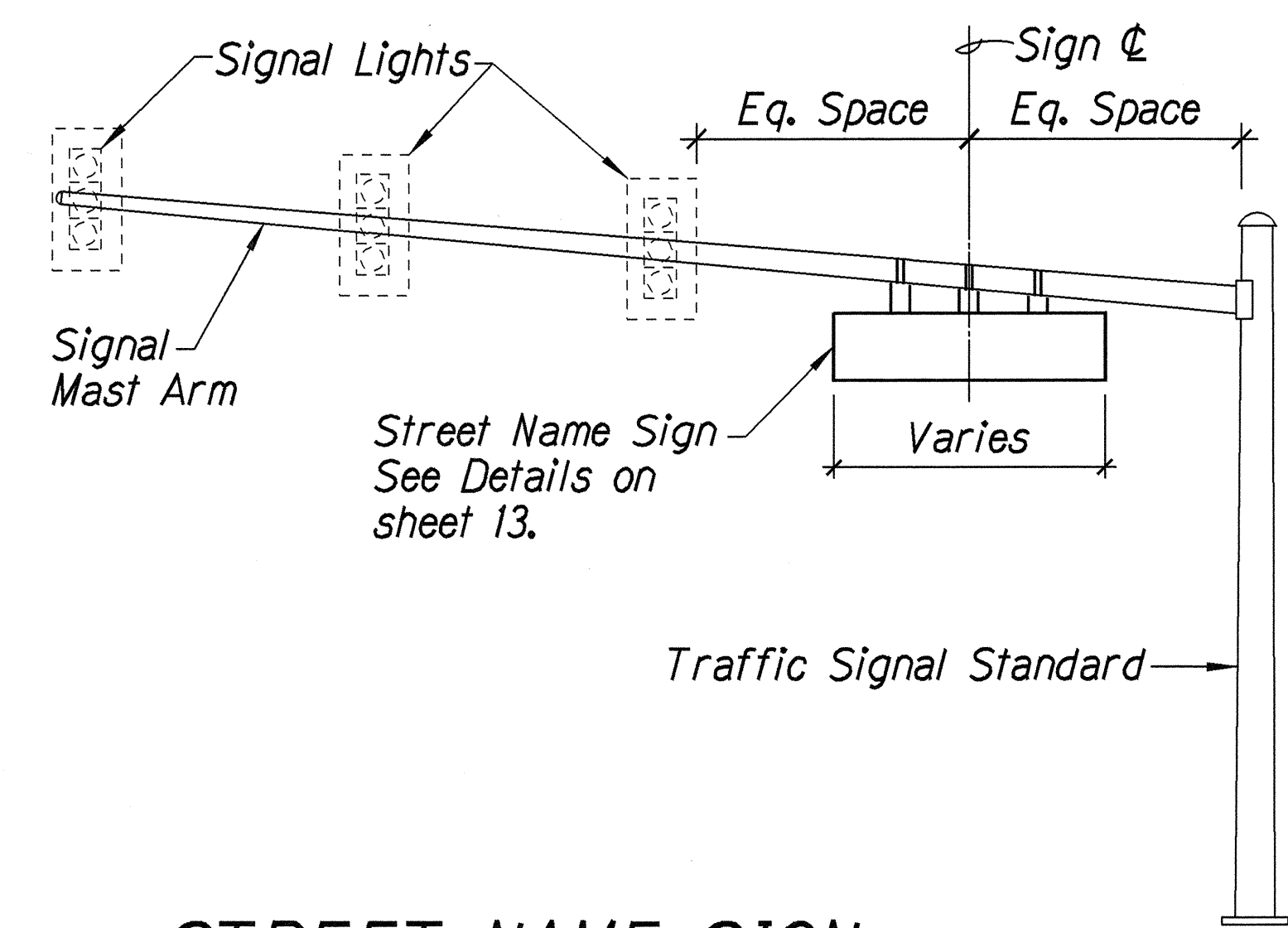


FED. ROAD DIST. NO.	STATE	FED. AID PROJ. NO.	FISCAL YEAR	SHEET NO.	TOTAL SHEETS
HAWAII	HAW.	STP-050-1(20)	2000	14	28

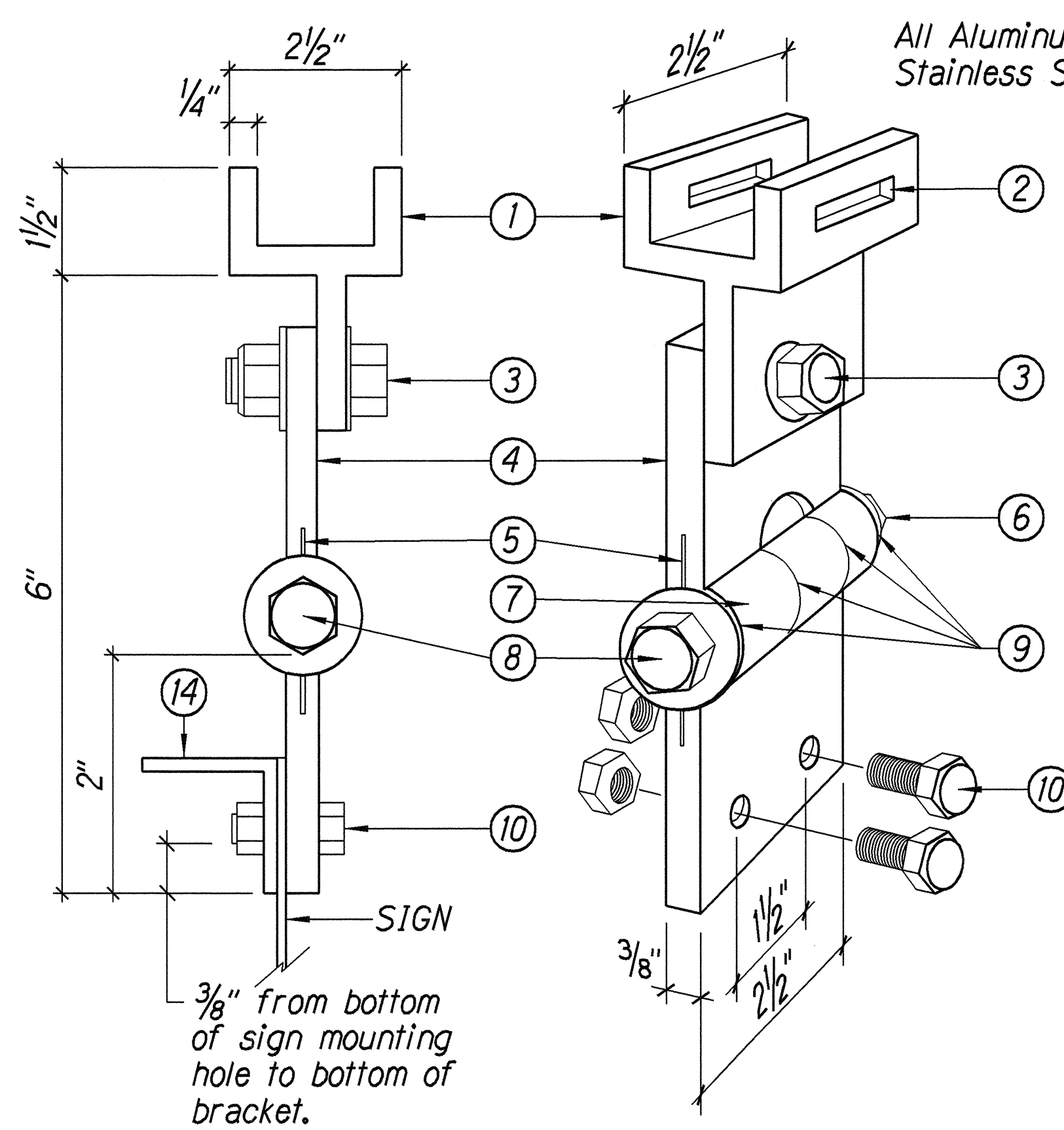


**STREET NAME SIGN MOUNTING ON MAST ARM** 1  
Not to Scale 14

**MATERIAL CALLOUT**

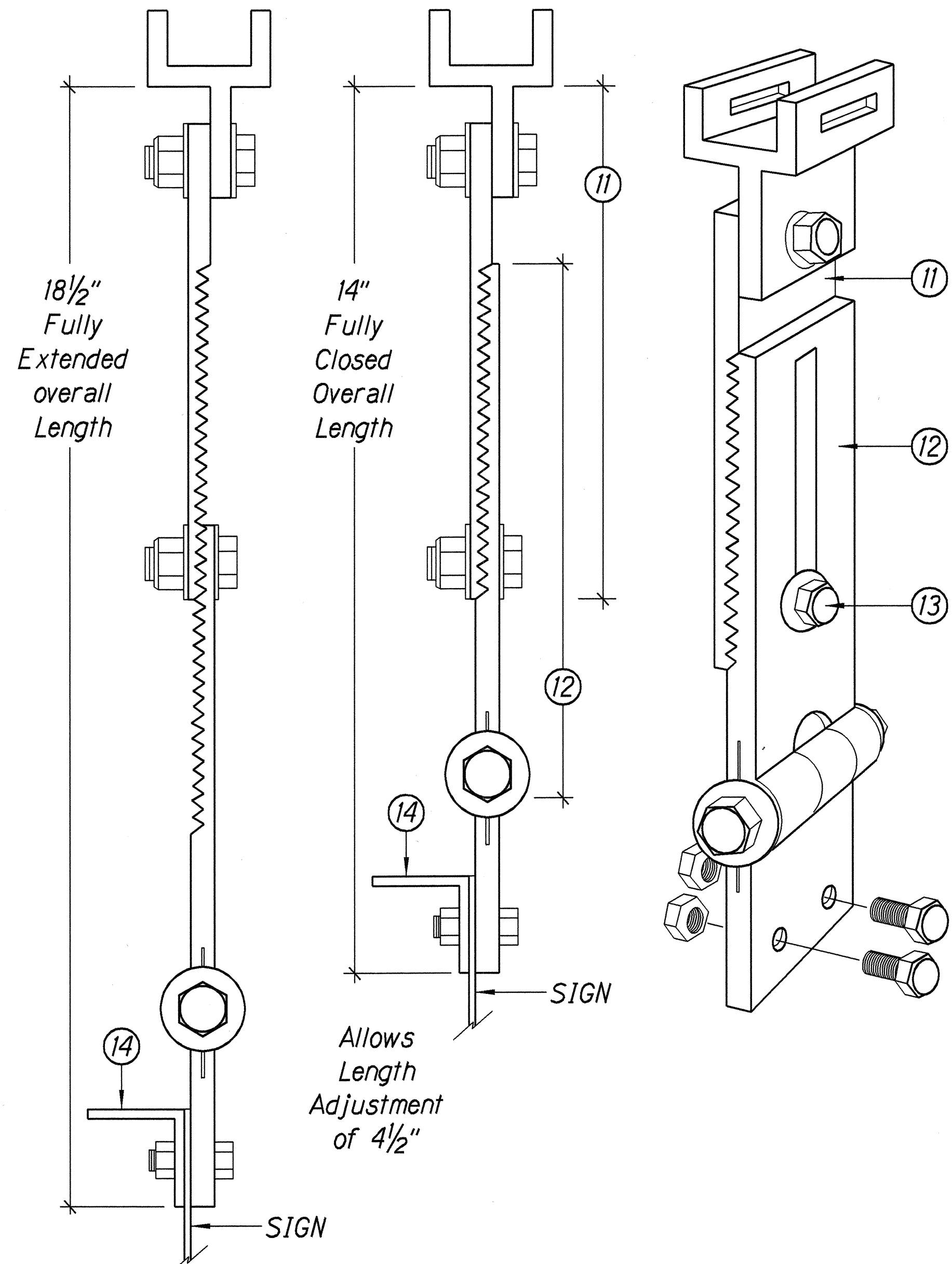
- ① Pivotal Upper Bracket
- ② 1 5/8" x 1/4" Slot for double strapping to electrolier mast arm. (M2G-34S(HD) .030" x 3/4" Heavy Duty Stainless Steel Strap with M2G-34B(HD) Buckle recommended.
- ③ 1/2" - 13 x 1 1/2" Stainless Steel Hex Head Bolt with Stainless Steel Hex Lock Nut and 1/16" Stainless Steel Washer (both sides). Allows upper bracket to pivot and align with electrolier mast arm.
- ④ 6" Overall drop with Fixed Length Sign Bracket
- ⑤ Stainless Steel Dampener Spring (Removable)
- ⑥ Stainless Steel Hex Lock Nut with 1/16" Stainless Steel Washer
- ⑦ 1" O.D. Axle Housing
- ⑧ 1/2" - 13 x 4" Stainless Steel Hex Head Bolt with 1/16" Stainless Steel Washer.
- ⑨ Oilite Bushing
- ⑩ Sign Mounting Sets, consisting of two each 5/16" - 18 x 1" Stainless Steel Hex Head Bolt with Stainless Steel Hex Lock Nut. Two holes on 1/2" centers provide positive lock sign mounting to bracket.
- ⑪ 8 1/4" overall length Upper Adjustable Sign Bracket section
- ⑫ 9" overall length Lower Adjustable Sign Bracket section, including Axle Housing (8" overall length to top of Axle Housing).
- ⑬ 1/2" - 13 x 1 1/2" Stainless Steel Hex Bolt with Stainless Steel Hex Lock Nut and 1/16" Stainless Steel Washers (both sides). Loosen lock nut, adjust bracket teeth to level sign.
- ⑭ 1 1/4" x 1 1/4" x 1/8" Aluminum Angle

Note: Dimensions may vary slightly.



**FIXED LENGTH NON-ADJUSTABLE SWING SIGN BRACKET** 2  
Not to Scale 14

All Aluminum 6061T6 Alloy and Stainless Steel Components.



**ADJUSTABLE LENGTH SWING SIGN BRACKET** 3  
Not to Scale 14

ORIGINAL PLAN	SURVEY PLOTTED BY	DATE
	DRAWN BY	
	TRACED BY	
	NOTE BOOK	
CHECKED BY	QUANTITIES BY	

THIS WORK WAS PREPARED BY ME OR UNDER MY SUPERVISION

*Howard K. Endo*

SHIMABUKURO, ENDO & YOSHIKAZAKI, INC.

1126 12th Avenue

Honolulu, Hawaii 96816

STATE OF HAWAII

DEPARTMENT OF TRANSPORTATION

HIGHWAYS DIVISION

**MAST ARM SIGN MOUNTING DETAIL**

*Kaunualii Highway Traffic Signal Modernization at Various Locations*

*Federal-Aid Project No. STP-050-1(20)*

Scale: As Shown Date: Apr., 2000

SHEET No. 1 OF 1 SHEETS