

FED. ROAD DIST. NO.	STATE	PROJ. NO.	FISCAL YEAR	SHEET NO.	TOTAL SHEETS
HAWAII	HAW.	50D-01-00M	2001	12	23

- GENERAL NOTES
- All hardware, posts and fasteners shall be hot-dip zinc coated galvanized after fabrication. No punching, drilling or cutting will be permitted after galvanizing.
 - Where conditions require, special post lengths in increments of 6 inches may be specified.
 - All fasteners, posts, and rail elements (i.e. FBB03, PWE01, RWM02b, etc.) shall conform to the latest edition and amendments of "A Guide to Standardized Highway Barrier Rail Hardware," a report prepared and approved by the AASHTO-AGC-ARTBA Joint Cooperative Committee, Subcommittee On New Highway Materials, Task Force 13 Report. Dimensions of fasteners, posts and rail elements have been converted from metric units into their present form.
 - The Recycled Plastic Block or Offset Block shall be approved by the State.
 - After the guardrail posts are installed in the paved area, the the Contractor shall place A.C. filler around the guardrail post and seal all cracks in the paved area that was caused during the guardrail post installation. If required by the inspector/engineer, the Contractor shall tamper the paved area around the guardrail post prior to placing A.C. filler. The cost for this work shall not be paid for separately, but shall be considered incidental to the various guardrail items.
 - When standards for the fill slope area cannot be met, a site specific, engineer approved design may be used.
 - Prior to installing Aggregate Base Course and A.C. Pavement, Mix No. IV, level and remove vegetation and compact existing ground to 95% compaction. New A.C. pavement at guardrails shall extend 6' longitudinally beyond terminal ends.
 - Reflector Markers (RM-5) mounted on guardrails shall be spaced every 50'-0". RM-5's shall not be installed on the FLEAT-350 Terminal Sections.

GUARDRAIL TYPE	DIMENSION
	H
Strong Post w/ W-Beam	1'-9 ⁵ / ₈ "
Rubrail	2'-0"
Modified Thrie Beam	2'-0"

* Unless Noted Otherwise on Plans.

** Where Room Available.

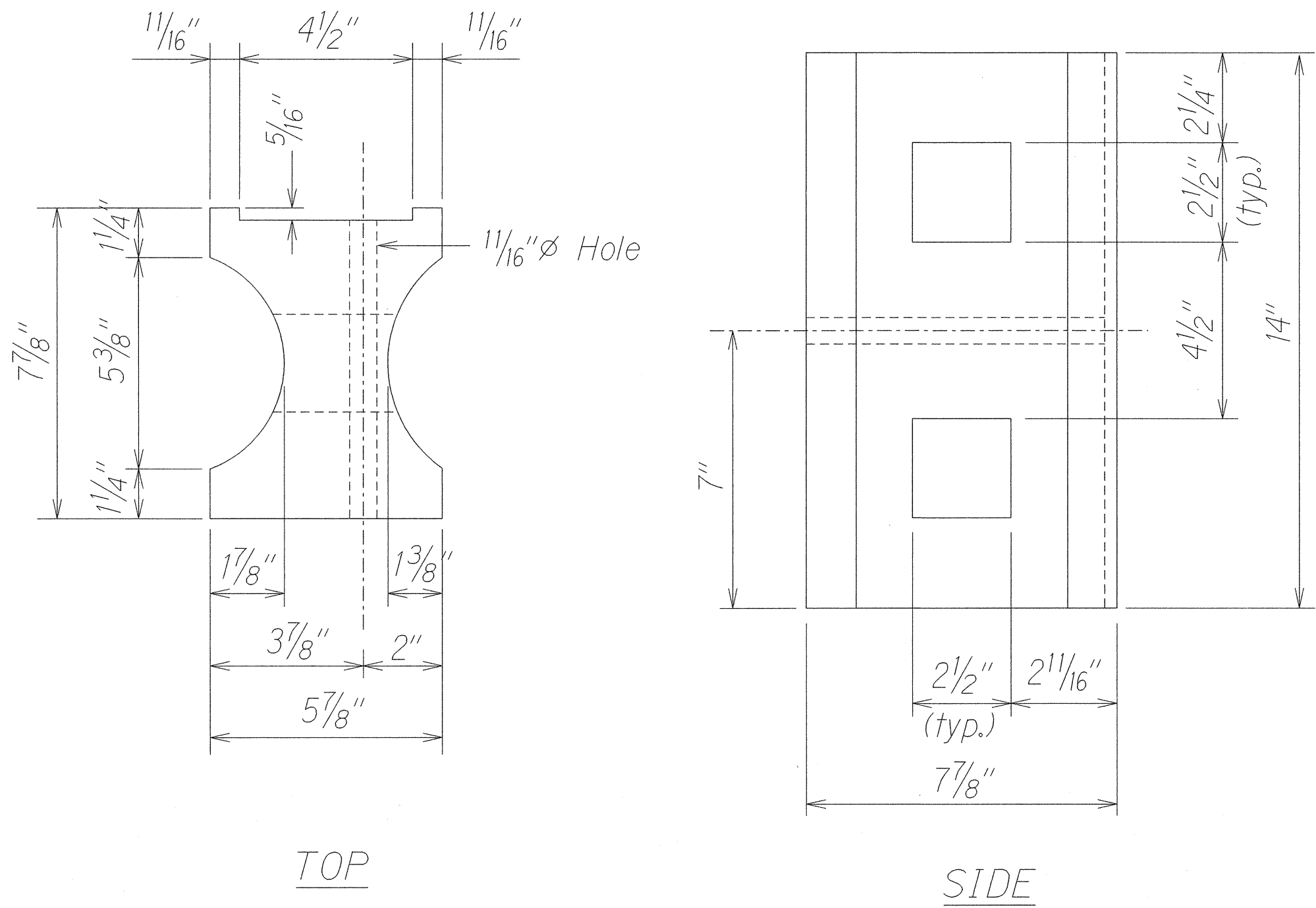
STATE OF HAWAII
DEPARTMENT OF TRANSPORTATION
HIGHWAYS DIVISION

GUARDRAIL DETAILS & NOTES

ROUTE 50,
KAUMUALII HIGHWAY RESURFACING
Vicinity of Maluhia Road to Omao Road
Project No. 50D-01-00M

Scale: Not to Scale Date: August, 2000

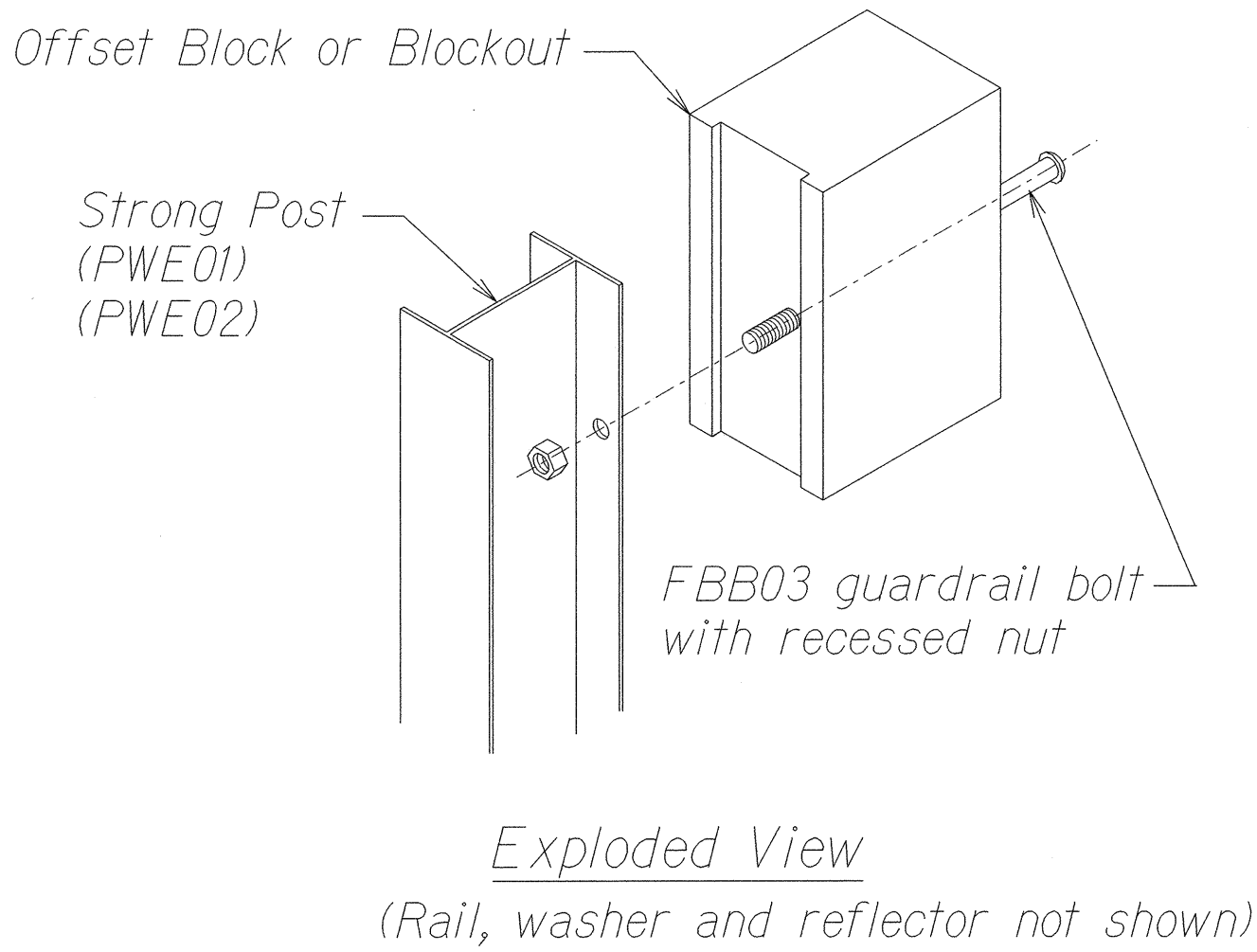
SHEET No. 1 OF 1 SHEETS



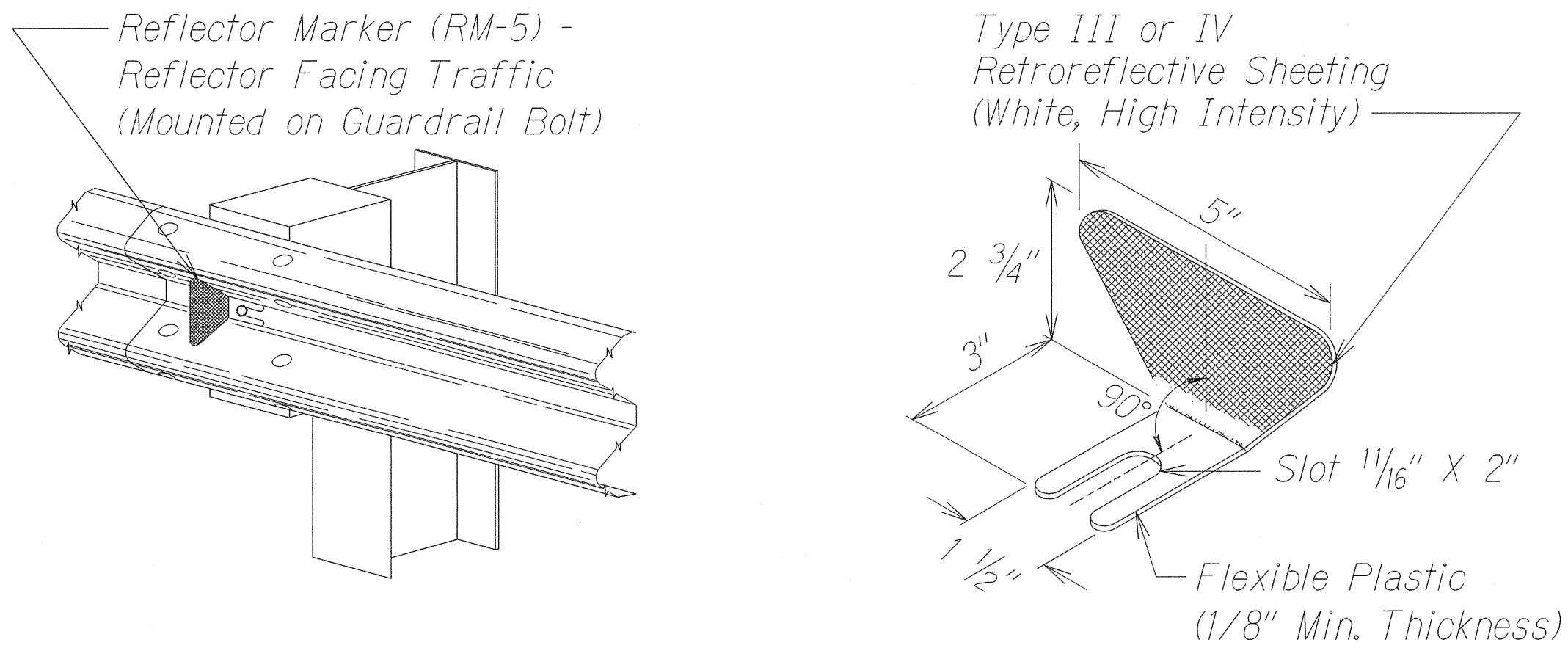
TOP

SIDE

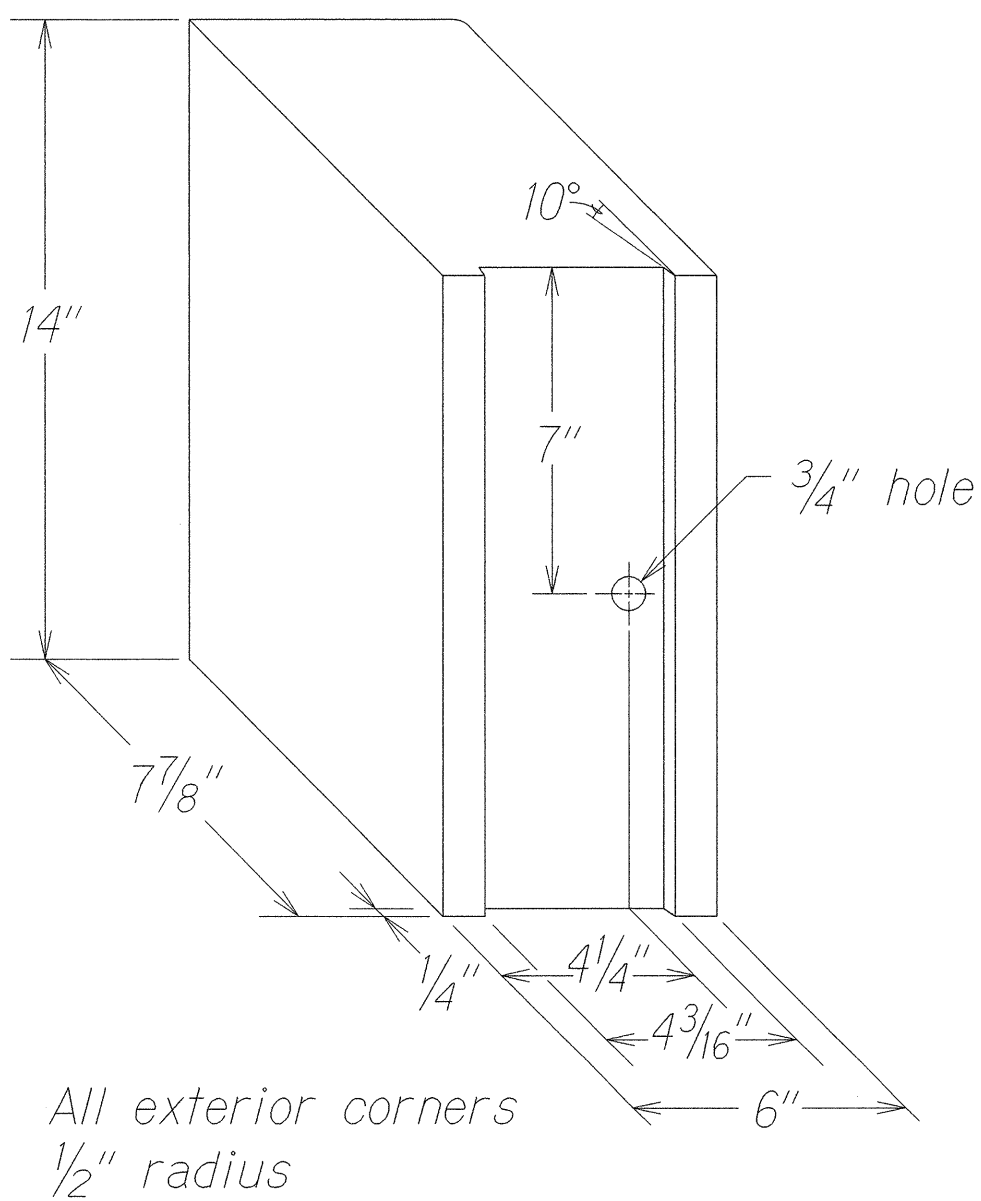
RECYCLED PLASTIC BLOCKOUT (TYPE I)



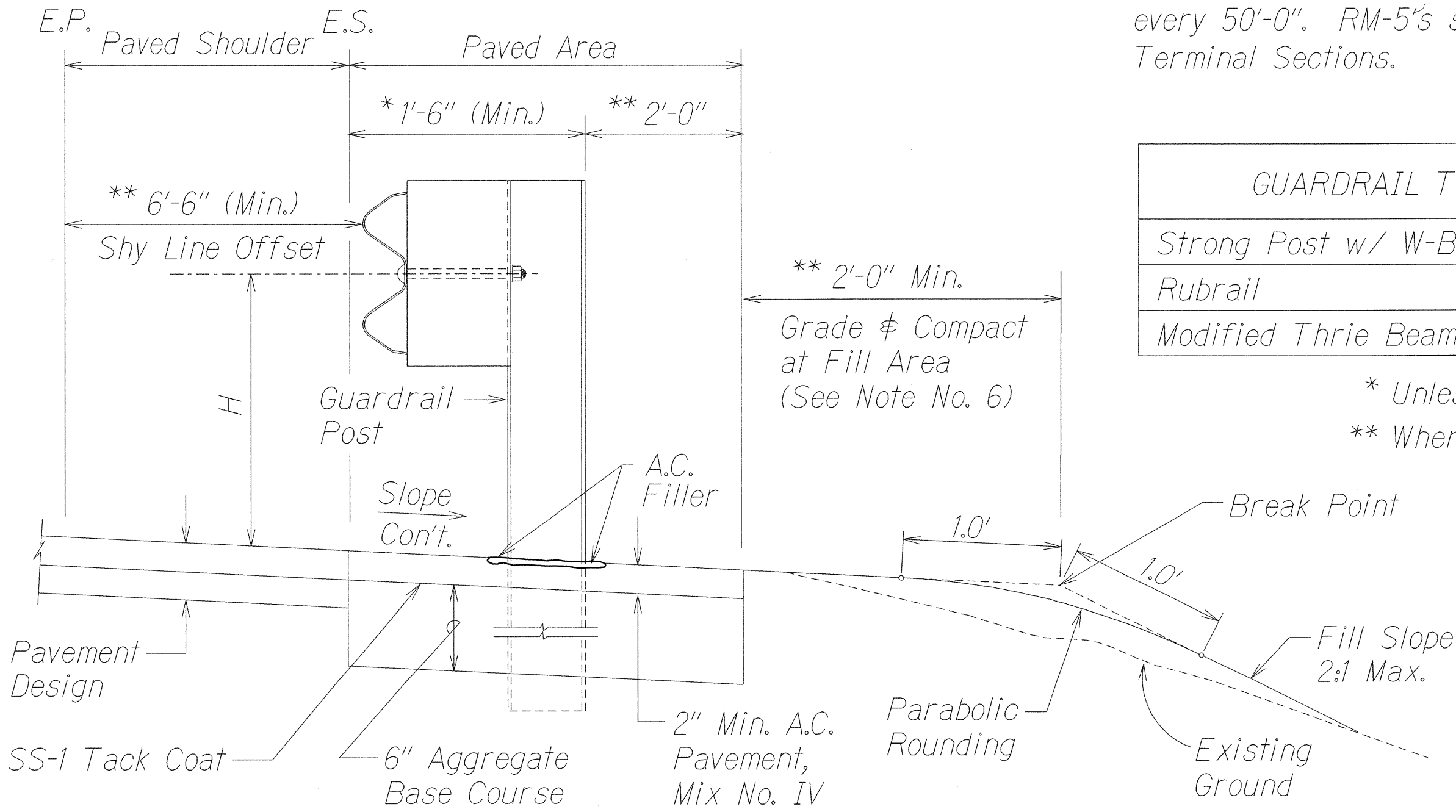
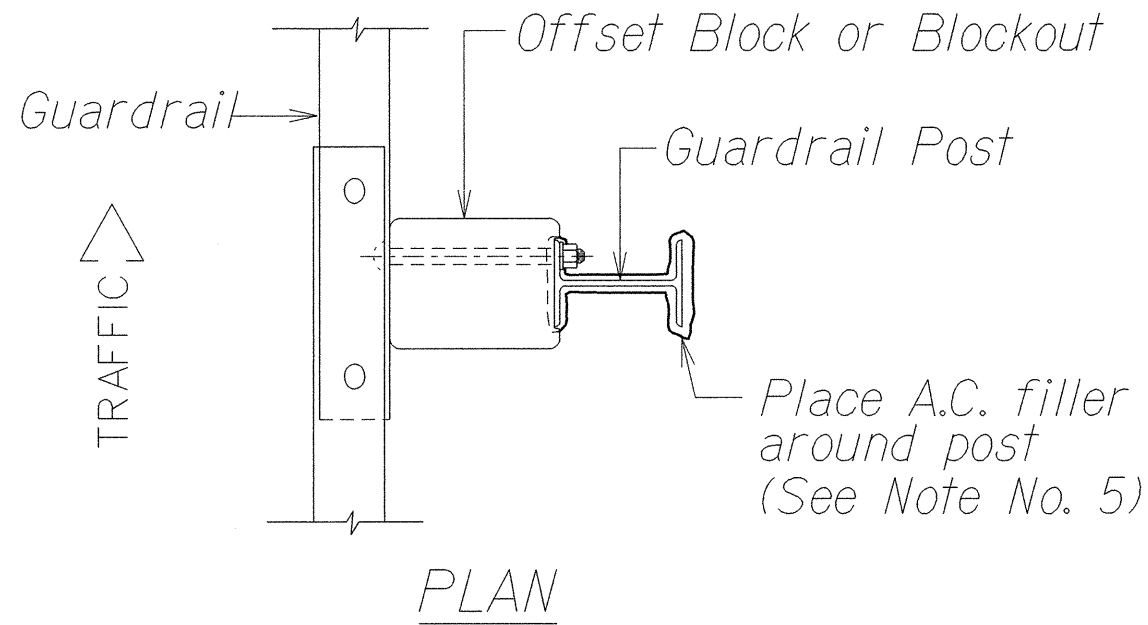
STEEL POST AND BLOCK DETAIL



REFLECTOR MARKER (RM-5) DETAIL AND TYPICAL INSTALLATION



RECYCLED POLYETHYLENE
OFFSET BLOCK (TYPE II)



ELEVATION

TYPICAL GUARDRAIL INSTALLATION

SURVEY PLOTTED BY	DATE
DESIGNED BY	
TRACED BY	
DESIGNED BY	
QUANTITIES BY	
CHECKED BY	
ORIGINAL PLAN	
NOTE BOOK	
N.	

jkmukts09.dgn