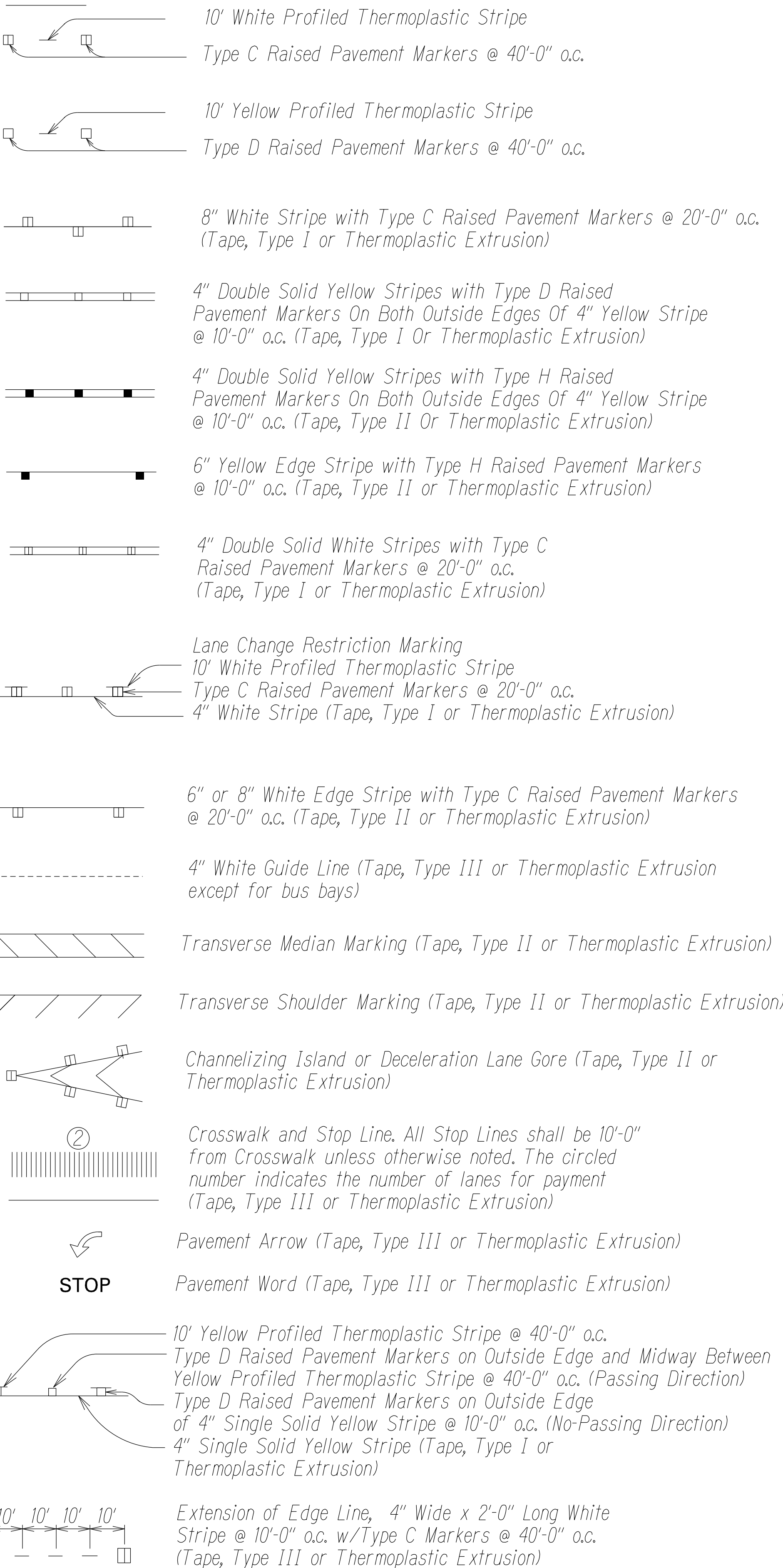
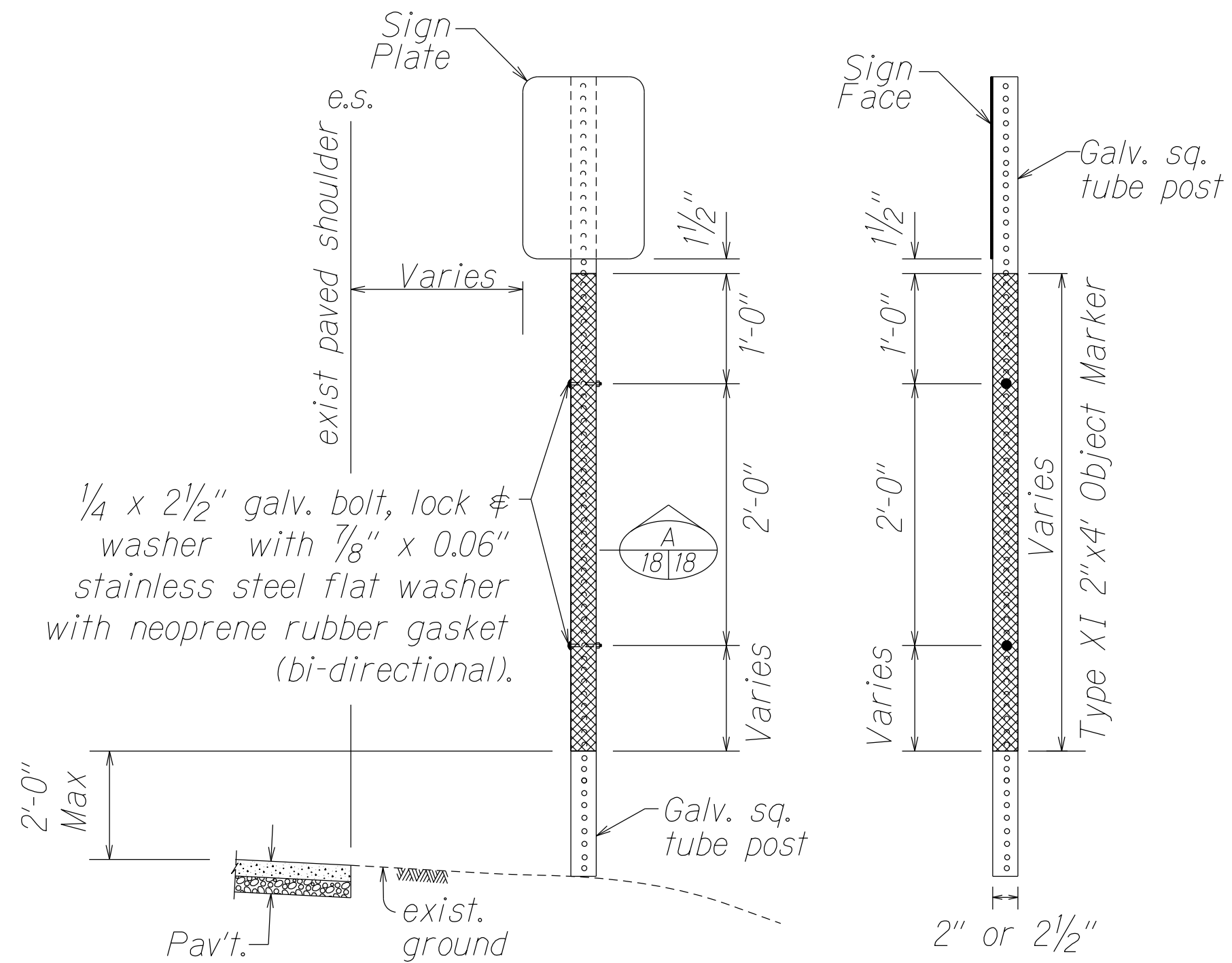


LEGEND



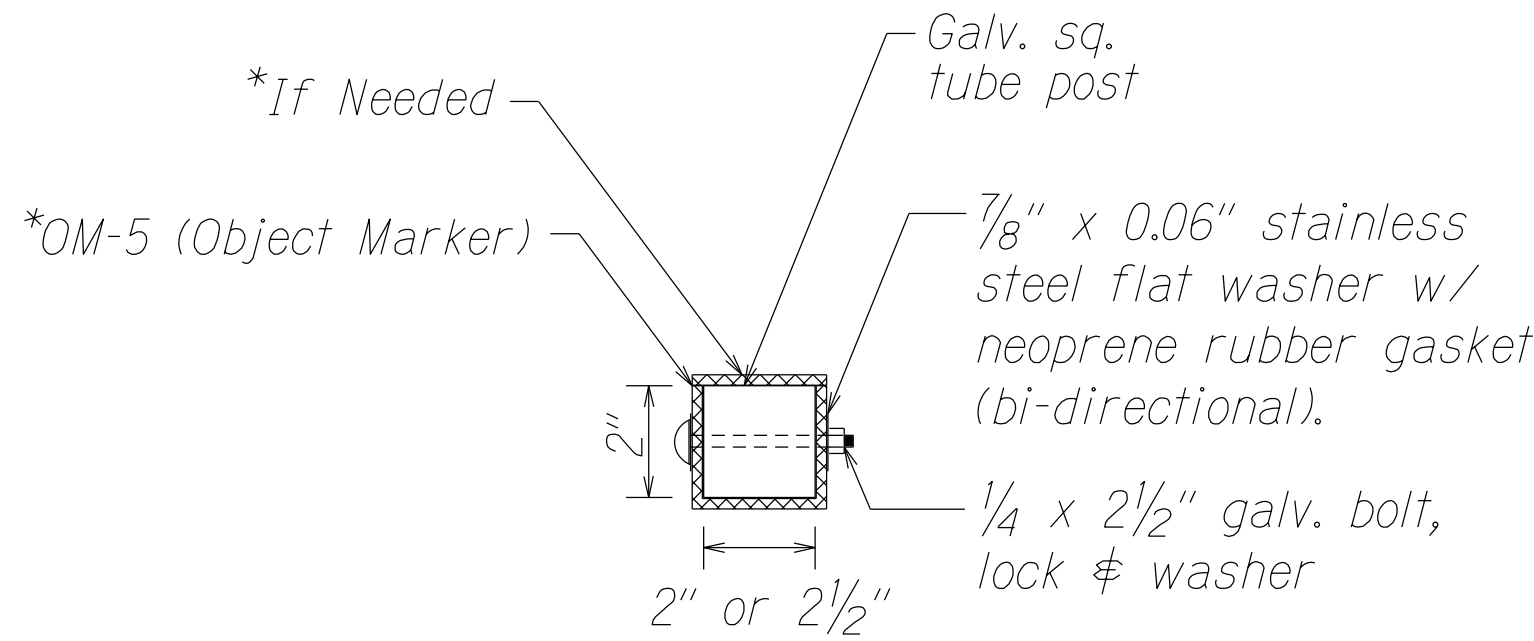
NOTES

- Layout of pavement markings and striping shall be done by the Contractor and approved by the Engineer prior to any installation work.
- Existing pavement markings not incorporated in the final traffic pattern shall be removed as directed by the Engineer. Costs shall be incidental to the various pavement marking items.
- Raised pavement markers shall not be installed within crosswalks.
- Final locations of all signs shall be approved by the Engineer prior to any installation work.
- Existing signs not shown on these plans shall remain as posted unless otherwise directed by the Engineer. Removal and disposal of existing signs and/or posts as designated on these plans shall be incidental to the various signing items.
- Final locations of all stop lines shall be approved by the Engineer prior to installation.
- All pavement striping shall be as noted on the legend or plans.
- Pavement marking (Tape or Thermoplastic Extrusion) over existing and new pavement shall be applied with an approved primer as recommended by the manufacturer and as approved by the Engineer. The primer shall be allowed to dry to the tacky stage prior to tape application.
- The Contractor shall erect at the beginning of the project and at the end of the project advance construction warning signs as indicated on the plans or as directed by the Engineer. The signs shall be kept in place for the duration of the project and shall be maintained by the Contractor. These signs shall be placed in addition to the required traffic controlsigns called for in Section 645 - Work Zone Traffic Control. The advance construction warning signs shall be new and become the property of the Contractor.
- Existing signs that are to be replaced shall not be removed until new signs are installed as replacements, or the messages are no longer necessary.
- Backing for all new regulatory and warning signs shall not be spliced.
- All sign panels shall conform to Section 630 of Special Provisions and the latest editions and amendments of the following FHWA publications:
  - "Manual on Uniform Traffic Control Devices for Streets and Highways" (MUTCD)
  - "Standard Highway Signs"
  - "Standard Alphabets for Highway Signs"
- State Route Marker Symbols, borders, messages, arrows, symbols and shields shall conform to details as shown on the plans and as specified in the MUTCD.
- All new and relocated signs and markers installed on pipe posts, light standard or expressway sign post are to be mounted with band brackets and steel braces.
- Removal and disposal of existing signs and posts shall be considered incidental to various contract items.
- Object markers (OM-5) shall be installed on all existing and proposed regulatory and warning sign posts within the project limits.
- If a strip of retroreflective material is used on the sign support, it shall be atleast 2 inches in width, it shall be placed for the full length of the support from the sign to within 2 feet above the edge of roadway, and its color shall match the background color of the sign, except that the color of the strip for the "YIELD" and "DO NOT ENTER" signs shall be red.
- Object marker shall be Vis-Z-Shield, manufactured by "Zumar" or approved equal.
- Background of object marker shall be retroreflectorized with Type XI retroreflective sheeting.

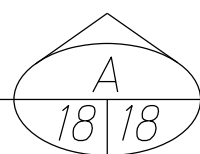


FRONT VIEW

SIDE VIEW



SECTION

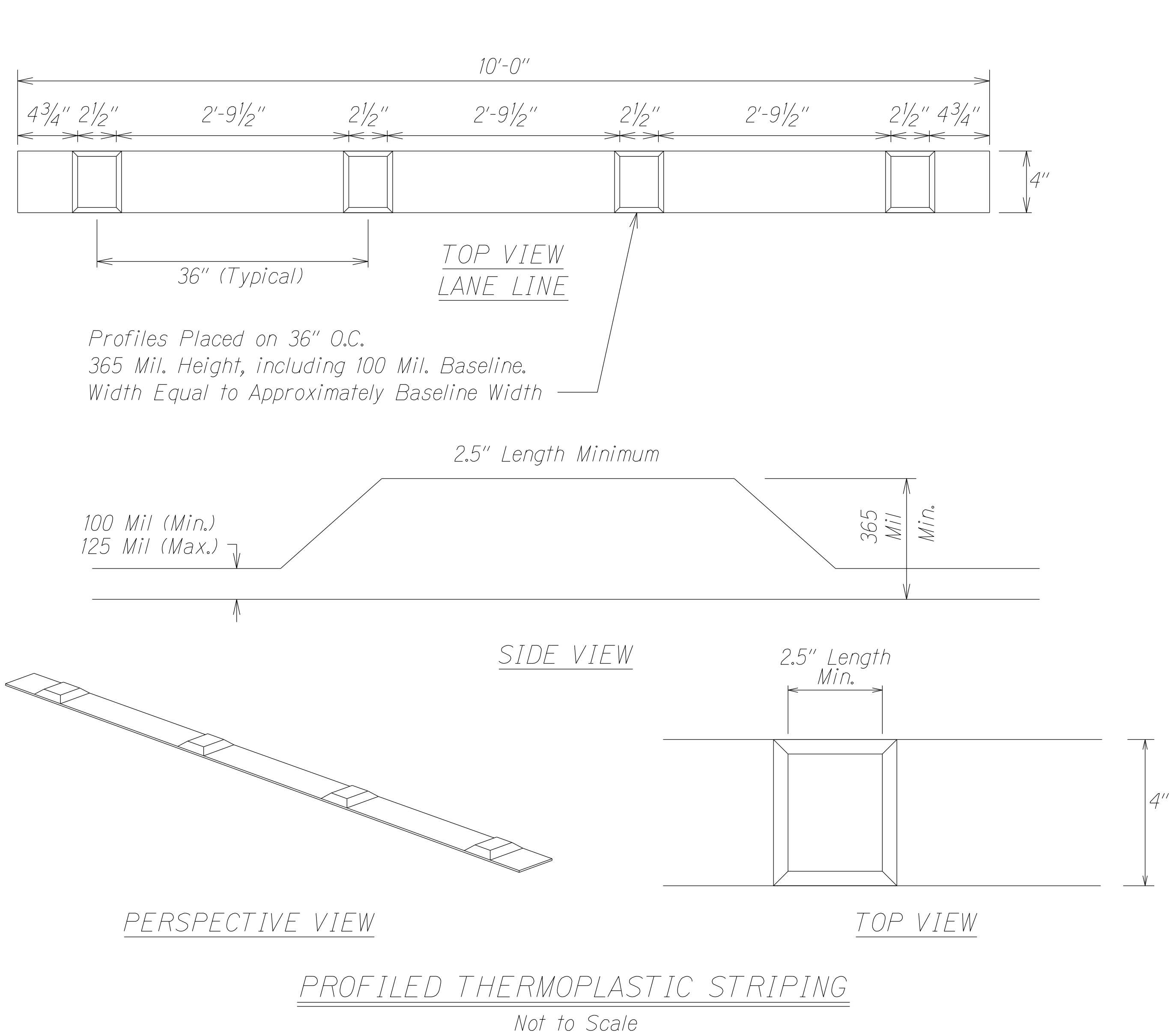


\*NOTE: OM-5 shall face all directions of traffic

OBJECT MARKER (OM-5) DETAIL @ TRAFFIC SIGN POST  
Not to Scale

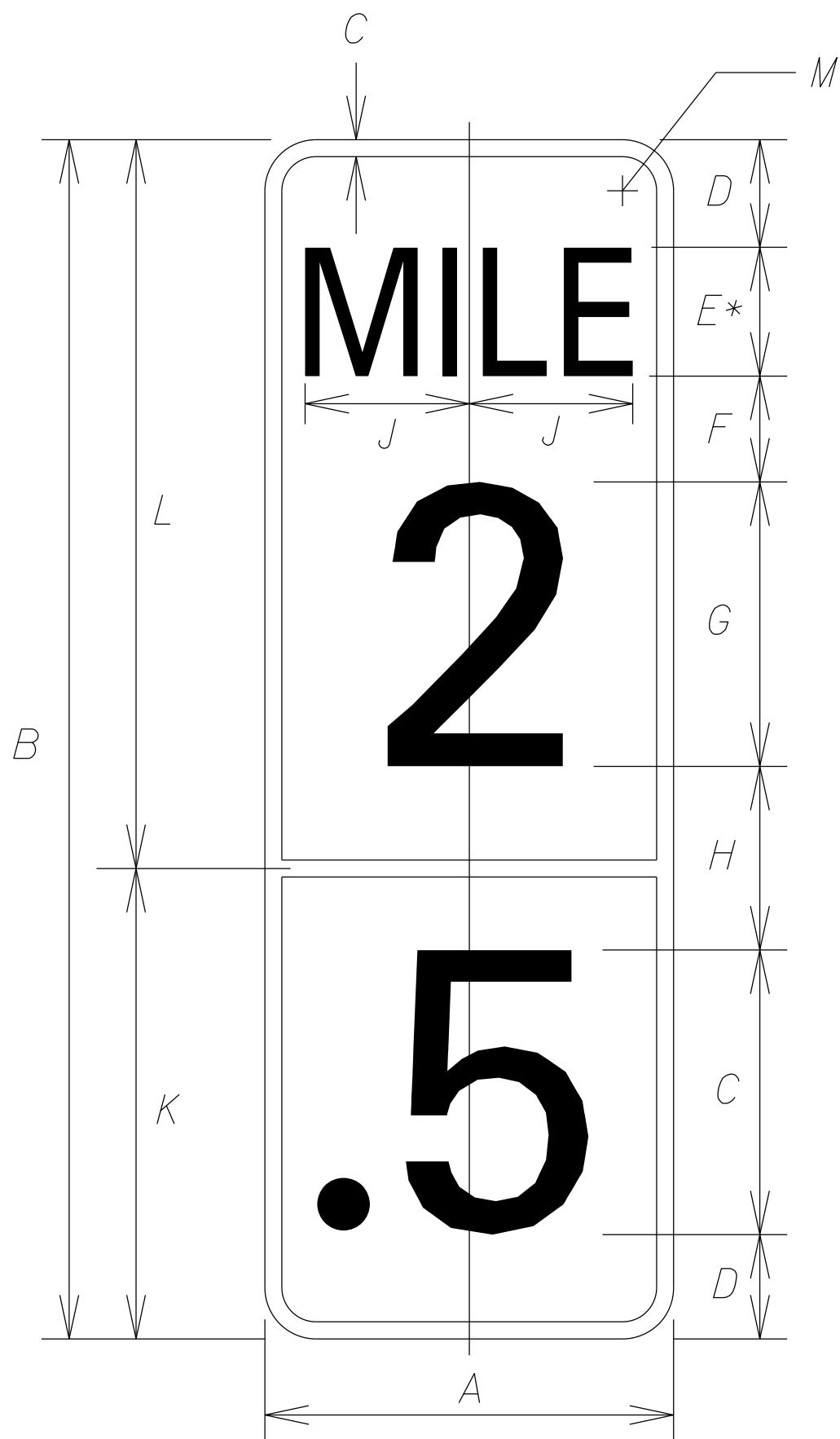
STATE OF HAWAII DEPARTMENT OF TRANSPORTATION HIGHWAYS DIVISION	
PAVEMENT MARKING LEGEND, DETAILS, NOTES & SUMMARY	
KAUMUALII HIGHWAY Intersection Improvements at Kauai Nursery Project No. 50D-01-20	
Date: March 2021	
SHEET No. 1	OF 2 SHEETS

FED. ROAD DIST. NO.	STATE	FED. AID PROJ. NO.	FISCAL YEAR	SHEET NO.	TOTAL SHEETS
HAWAII	HAW.	50D-01-20	2022	13	18



NOTES:

1. The thermoplastic material shall be a alkyd-based compound formulated for profiled pavement marking. See specs subsection 629.03 for additional requirements
2. Install white profiled thermoplastic stripes as lane line.
3. Install yellow profiled thermoplastic stripes for centerline passing zone.
4. In areas with centerline milled rumble strips, install standard yellow thermoplastic stripes without raised profiles



*\*NOTE  
Series 2000 Standard Alphabets.  
Optically Locate Numerals about  
Centerline.*

LEGEND (IN.)					
A	B	C	D	E	F
12	36	0.5	3	4B	3
G	H	J	K	L	M
10D	3	3.922	14.5	21.5	1.5

D10-1A MILEPOST SIGN  
Not to Scale

ORIGINAL PLAN	SURVEY PLOTTED BY	DATE
NOTE BOOK	DRAWN BY	
DESIGNED BY		
QUANTITIES BY		
CHECKED BY		
BY		

STATE OF HAWAII  
DEPARTMENT OF TRANSPORTATION  
HIGHWAYS DIVISION

PAVEMENT MARKING LEGEND,  
DETAILS, NOTES & SUMMARY

KAUMUALII HIGHWAY  
Intersection Improvements at Kauai Nursery  
Project No. 50D-01-20  
Date: August 2021

SHEET No. 2 OF 2 SHEETS