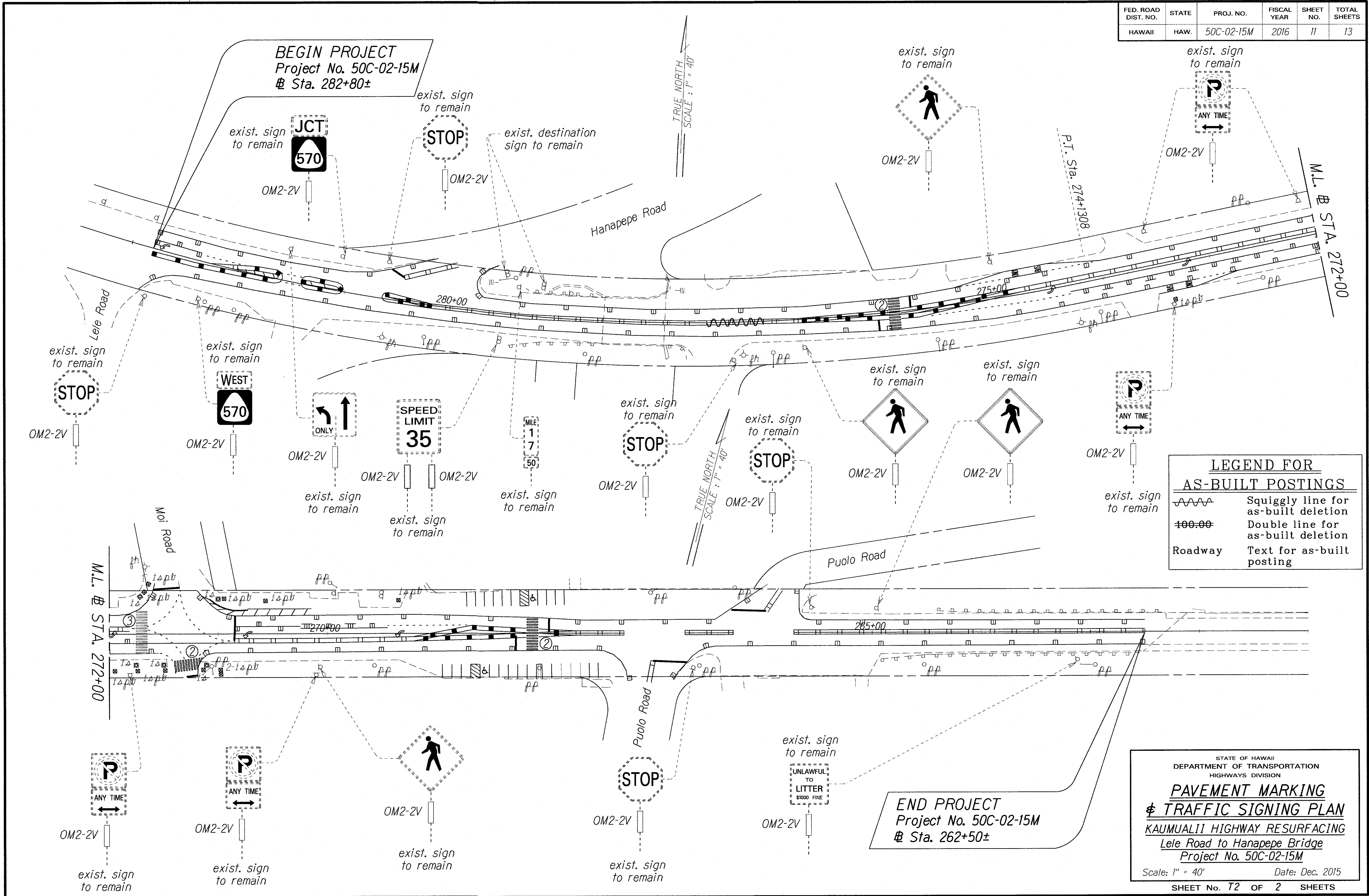


FED. ROAD DIST. NO.	STATE	PROJ. NO.	FISCAL YEAR	SHEET NO.	TOTAL SHEETS
HAWAII	HAW.	50C-02-15M	2016	11	13



LEGEND FOR AS-BUILT POSTINGS

	Squiggly line for as-built deletion
	Double line for as-built deletion
Roadway	Text for as-built posting

ORIGINAL PLAN	DATE
SURVEY PLOTTED BY	
DRAWN BY	
NOTED BY	
CHECKED BY	
DATE	

END PROJECT
Project No. 50C-02-15M
Sta. 262+50±

STATE OF HAWAII
DEPARTMENT OF TRANSPORTATION
HIGHWAYS DIVISION

**PAVEMENT MARKING
& TRAFFIC SIGNING PLAN**

KAUMUALII HIGHWAY RESURFACING
Lele Road to Hanapepe Bridge
Project No. 50C-02-15M

Scale: 1" = 40' Date: Dec. 2015

SHEET No. T2 OF 2 SHEETS

"AS-BUILT"