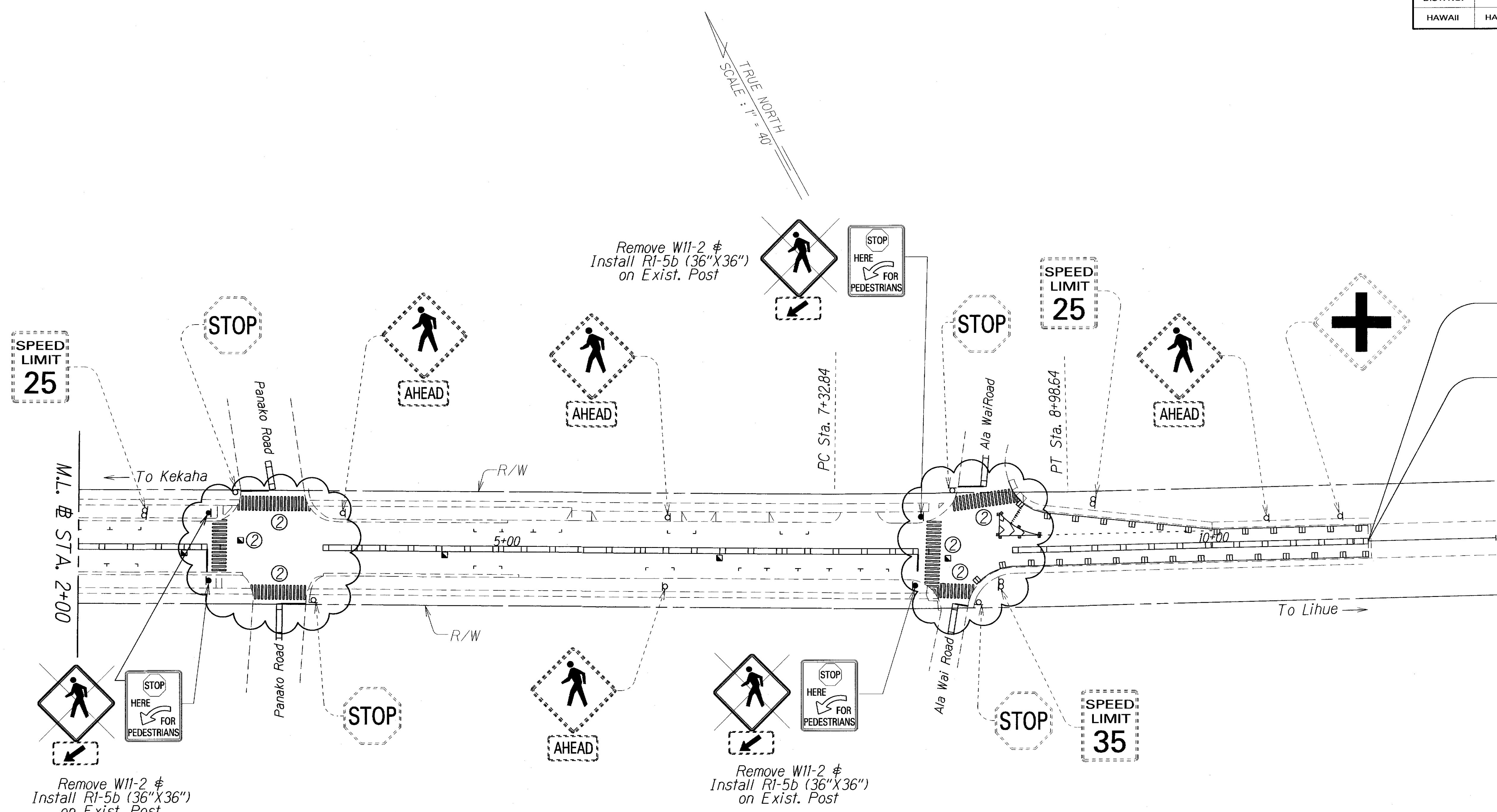


FED. ROAD DIST. NO.	STATE	PROJ. NO.	FISCAL YEAR	SHEET NO.	TOTAL SHEETS
HAWAII	HAW.	50B-01-15M	2016	13	14



SPEED LIMIT 25

STOP

AHEAD

AHEAD

STOP

SPEED LIMIT 25

AHEAD

+

END PROJECT
Project No. 50B-01-15M
@ Sta. 10+9.98±

Remove W11-2 ϕ
Install R1-5b (36"X36")
on Exist. Post

Remove W11-2 ϕ
Install R1-5b (36"X36")
on Exist. Post

Remove W11-2 ϕ
Install R1-5b (36"X36")
on Exist. Post

ORIGINAL PLAN	DATE
SURVEY PLOTTED BY	
DRAWN BY	
TRACED BY	
NOTED BY	
QUANTITIES BY	
CHECKED BY	

LEGEND FOR AS-BUILT POSTINGS	
	Squiggly line for as-built deletion
	Double line for as-built deletion
Roadway	Text for as-built posting

STATE OF HAWAII
DEPARTMENT OF TRANSPORTATION
HIGHWAYS DIVISION

PAVEMENT MARKING
 ϕ TRAFFIC SIGNING PLAN

KAUMUALII HIGHWAY RESURFACING
Waimea Canyon Drive to Waimea River Bridge
Project No. 50B-01-15M

Scale: 1" = 40' Date: Oct. 2014

SHEET No. T3 OF 4 SHEETS

"AS-BUILT"