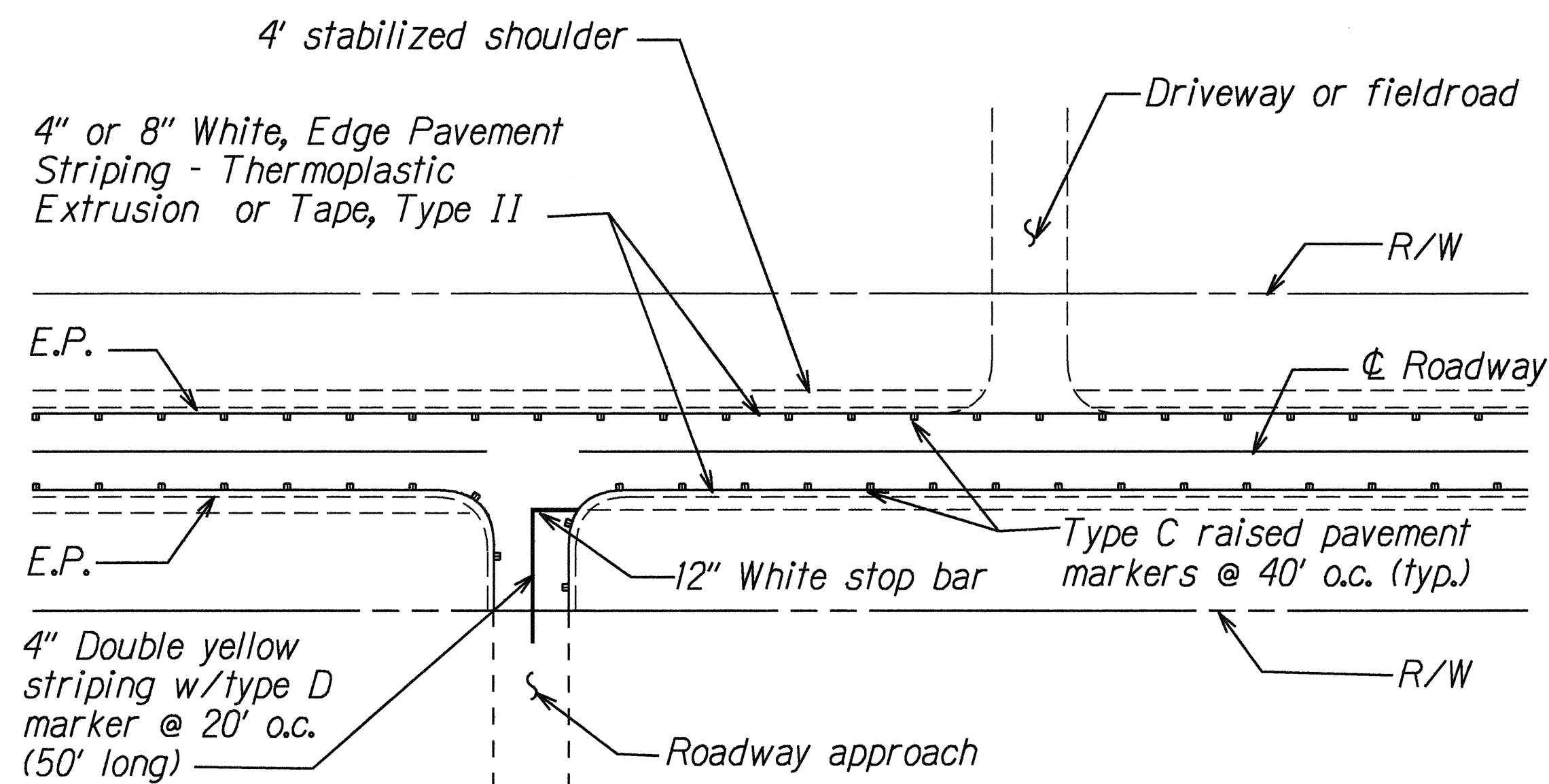
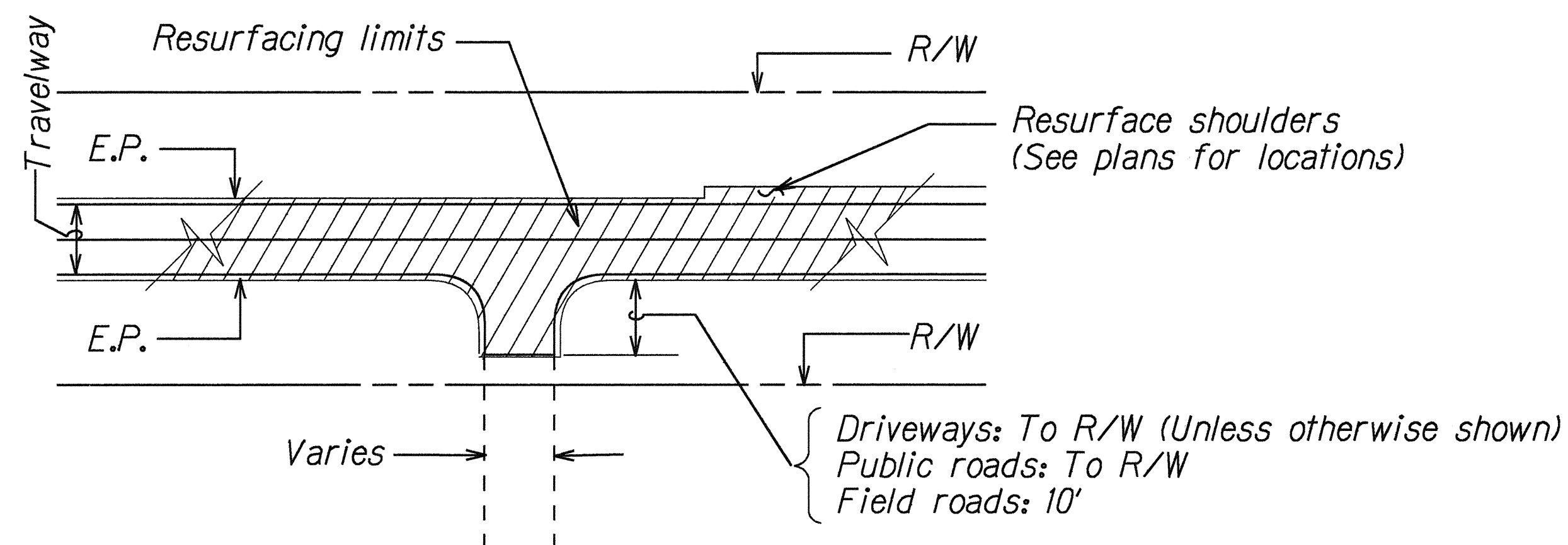


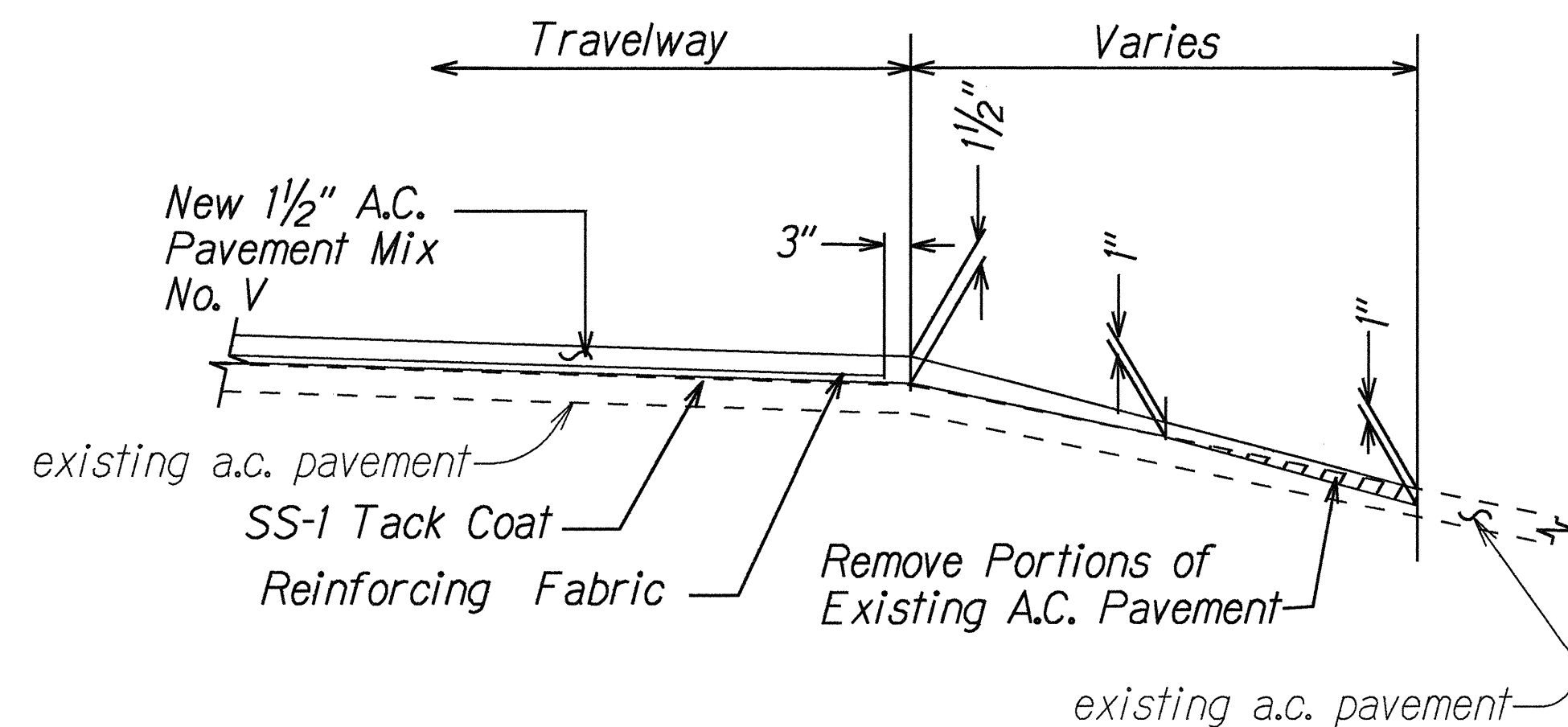
FED. ROAD DIST. NO.	STATE	FED. AID PROJ. NO.	FISCAL YEAR	SHEET NO.	TOTAL SHEETS
HAWAII	HAW.	STP-050-1(15)	1995	5	36



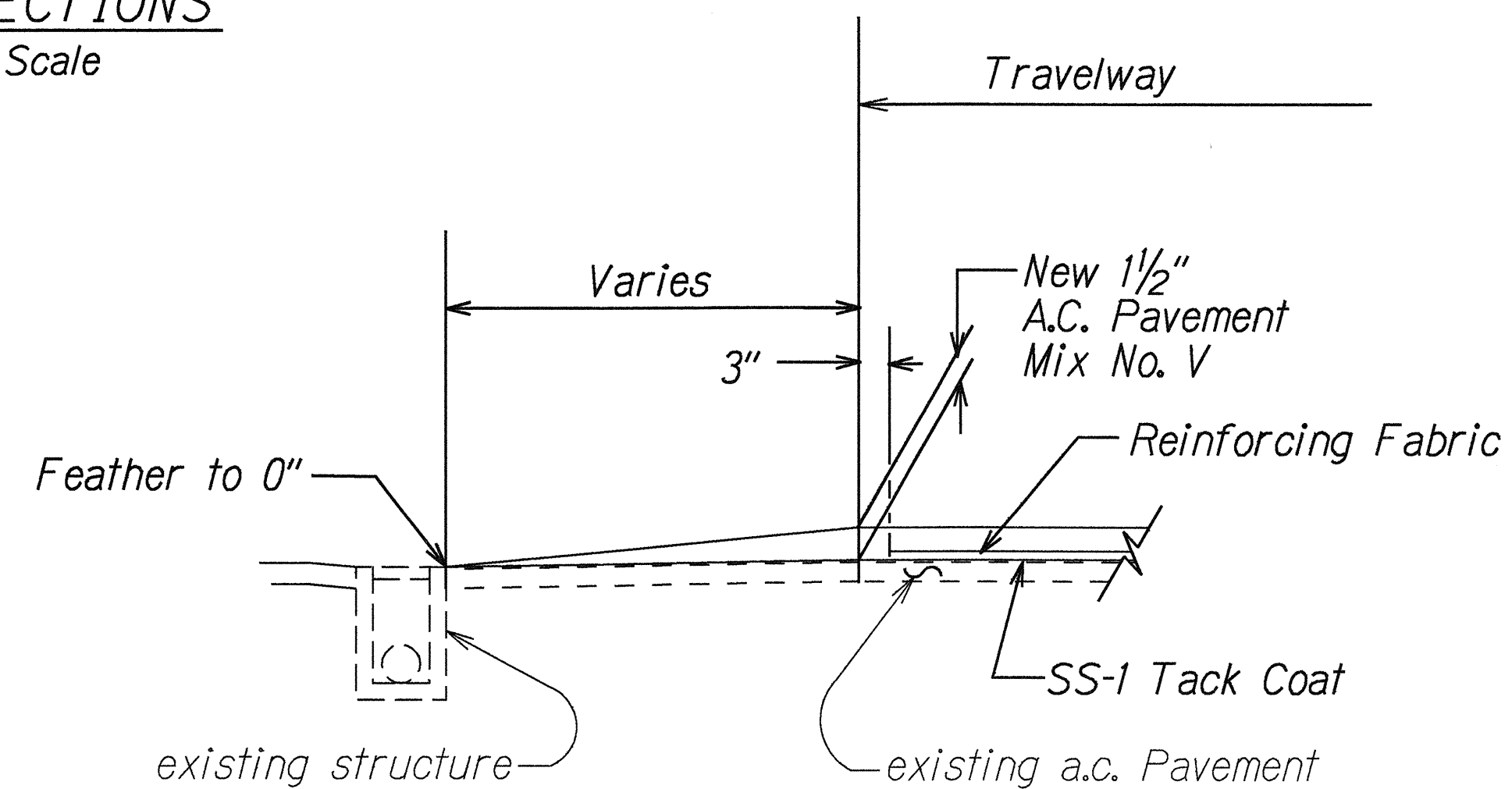
PLAN
TYPICAL EDGE LINE WITH
RAISED PAVEMENT MARKERS
Not To Scale



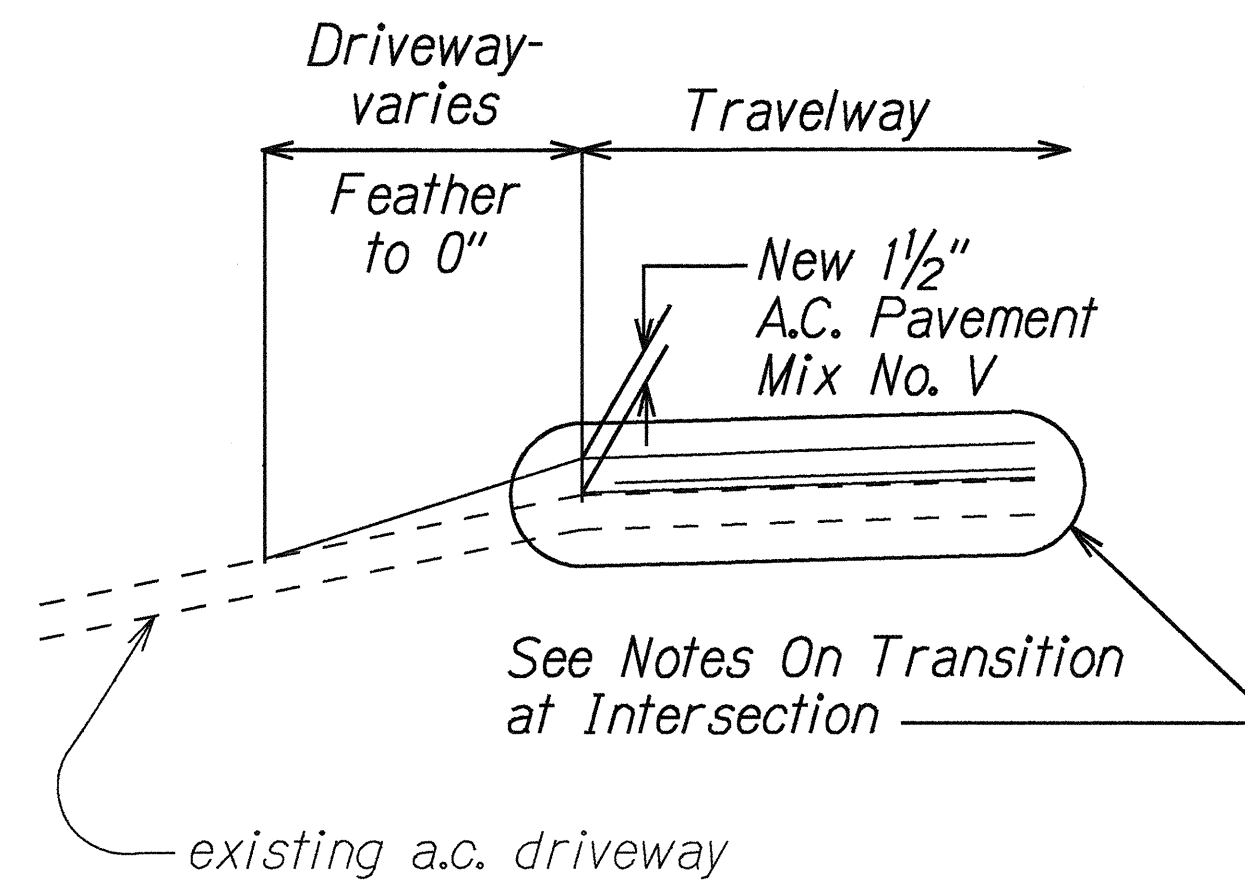
PLAN
TYPICAL RESURFACING LIMITS
Not To Scale



TYPICAL PAVEMENT TRANSITION
AT INTERSECTIONS
Not To Scale



TYPICAL TRANSITION
AT STRUCTURES
Not To Scale



TYPICAL PAVEMENT TRANSITION
AT DRIVEWAYS
Not To Scale

ORIGINAL PLAN	SURVEY PLOTTED BY	DATE
NOTE BOOK	DRAWN BY	
ddi grace	TRACED BY	
N. d. m. k. s. d.	QUANTITIES BY	
	CHECKED BY	

STATE OF HAWAII
DEPARTMENT OF TRANSPORTATION
HIGHWAYS DIVISION

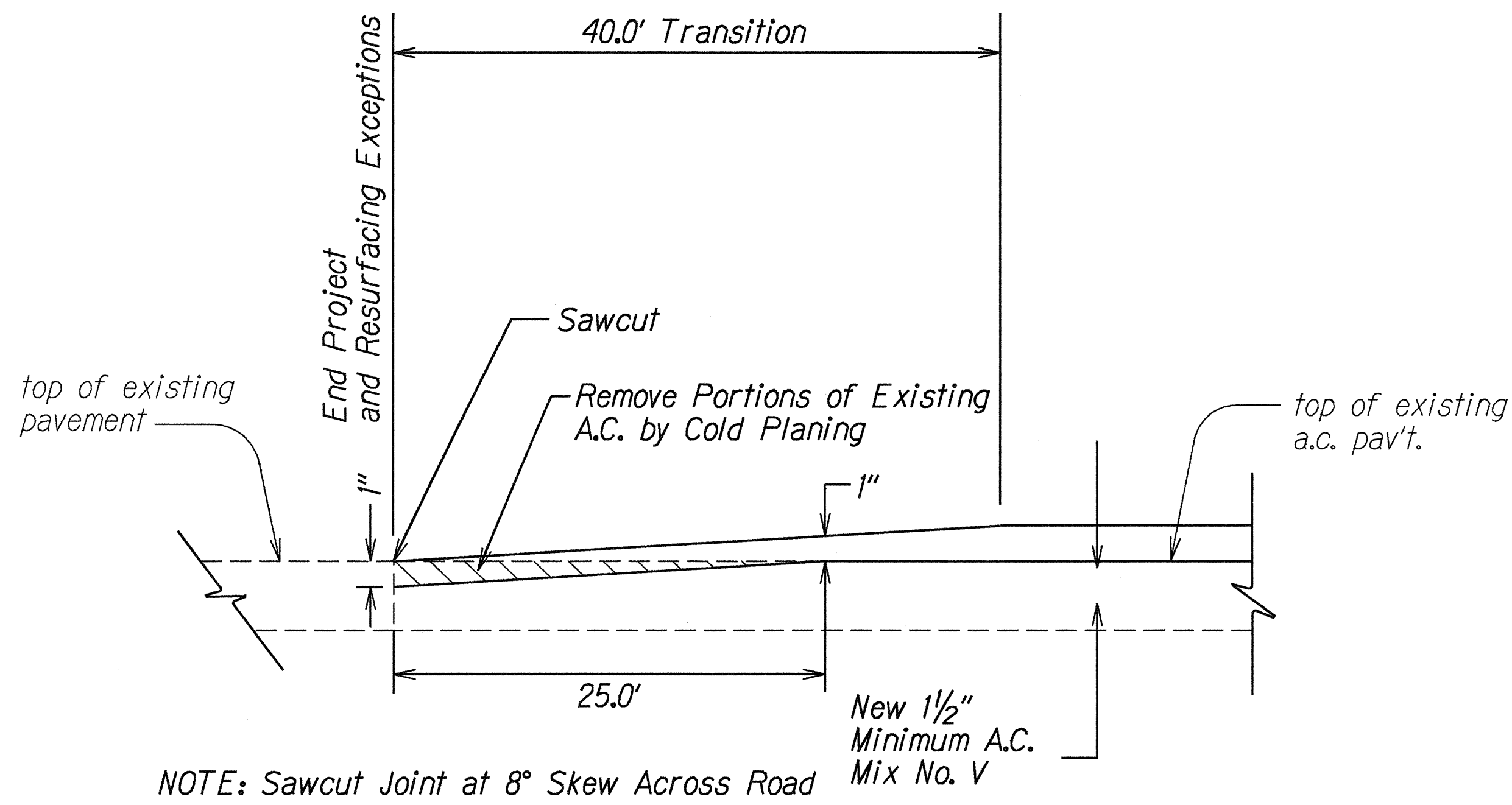
TYPICAL PLANS
SECTIONS & DETAILS

KAUMUALII HIGHWAY RESURFACING
KUKUI GROVE TO HULEIA BRIDGE
Fed Aid Proj. No. STP-050-1(15)

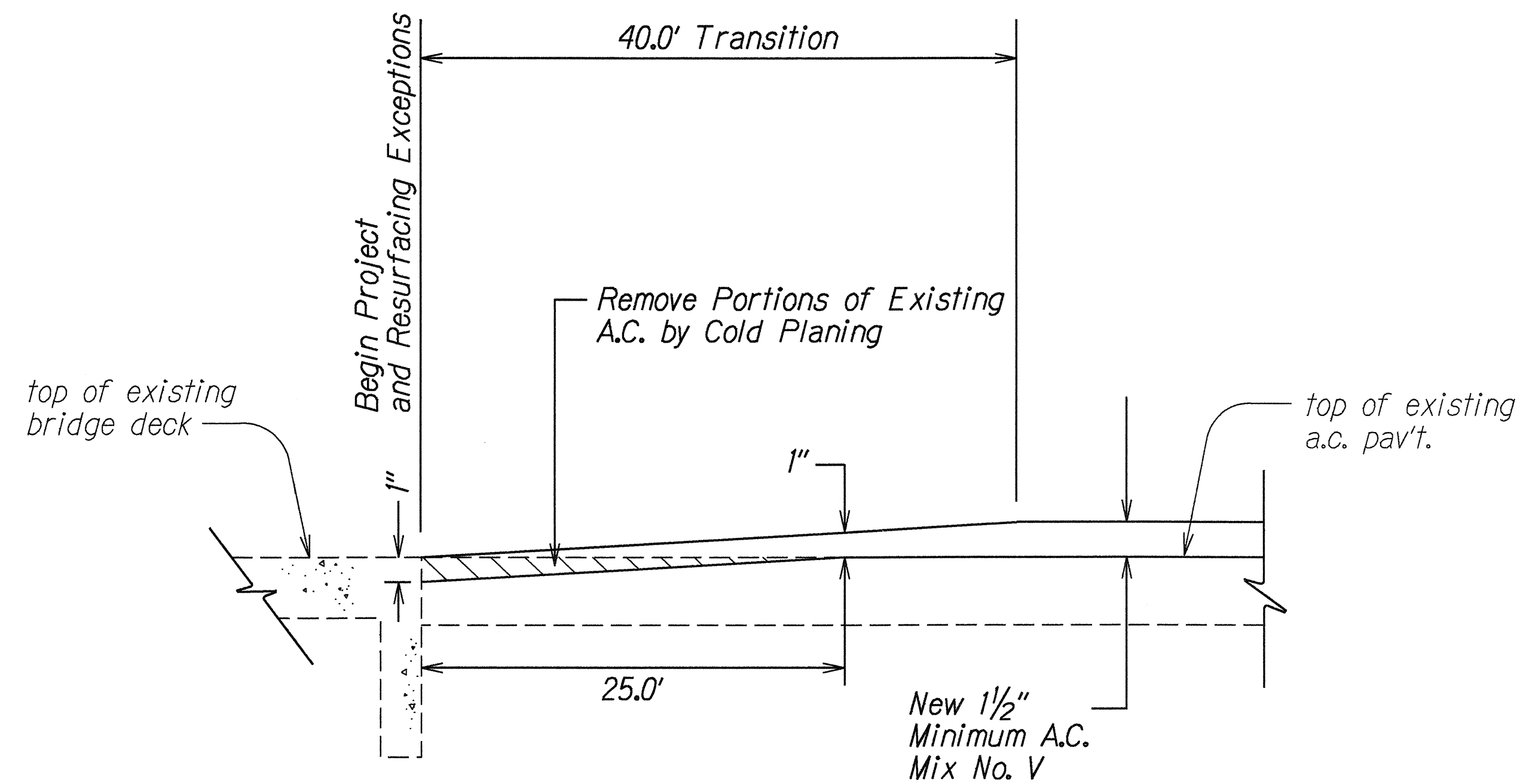
Scale: As Shown Date: Apr, 1995

SHEET No. 1 OF 4 SHEETS

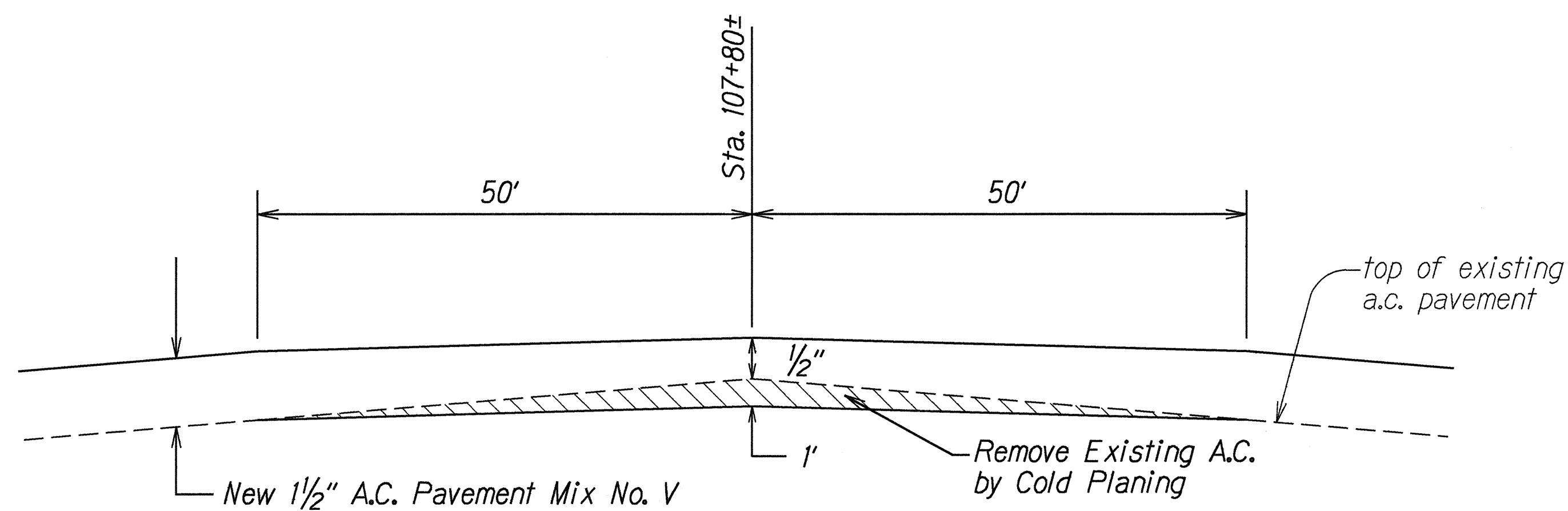
FED. ROAD DIST. NO.	STATE	FED. AID PROJ. NO.	FISCAL YEAR	SHEET NO.	TOTAL SHEETS
HAWAII	HAW.	STP-050-1(15)	1995	6	36



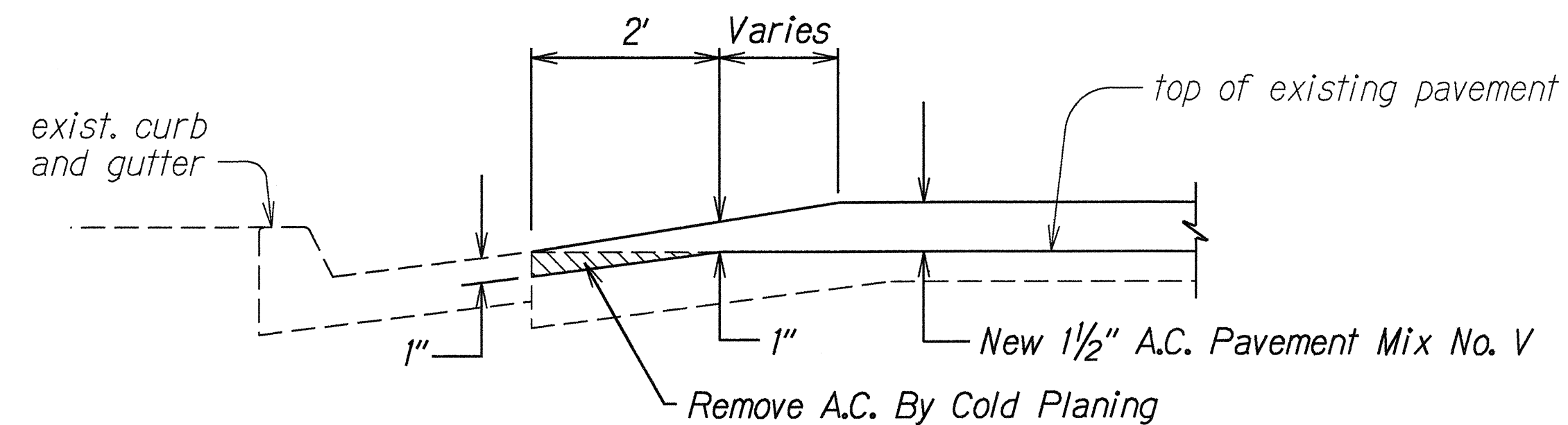
TYPICAL SECTION AT TRANSITION
Not to Scale



TYPICAL SECTION AT BRIDGE
Not to Scale



PROFILE GRADE ADJUSTMENT
STA. 107+80
Not To Scale



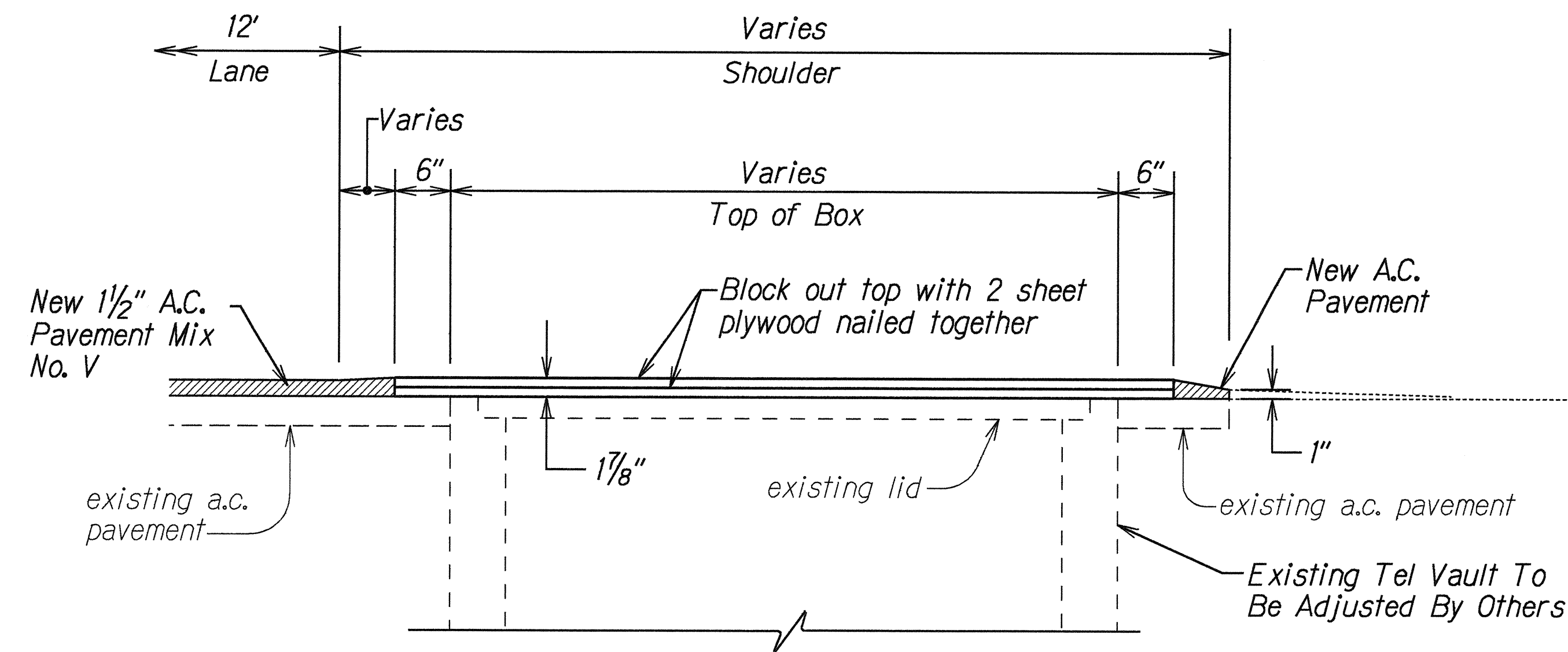
RESURFACING AT CURB AND GUTTER
WITH TAPER ENDING AT EDGE OF GUTTER
Not To Scale

NOTE:
See Plans for locations of Loop Detectors at Puhi Road Intersection. Contractor shall verify depth of Loop Detector Cables in Cold Planing areas and adjust depth if necessary. Contractor shall be responsible for reinstalling new Loop Detectors if existing cable is cut. Cables shall not be spliced.

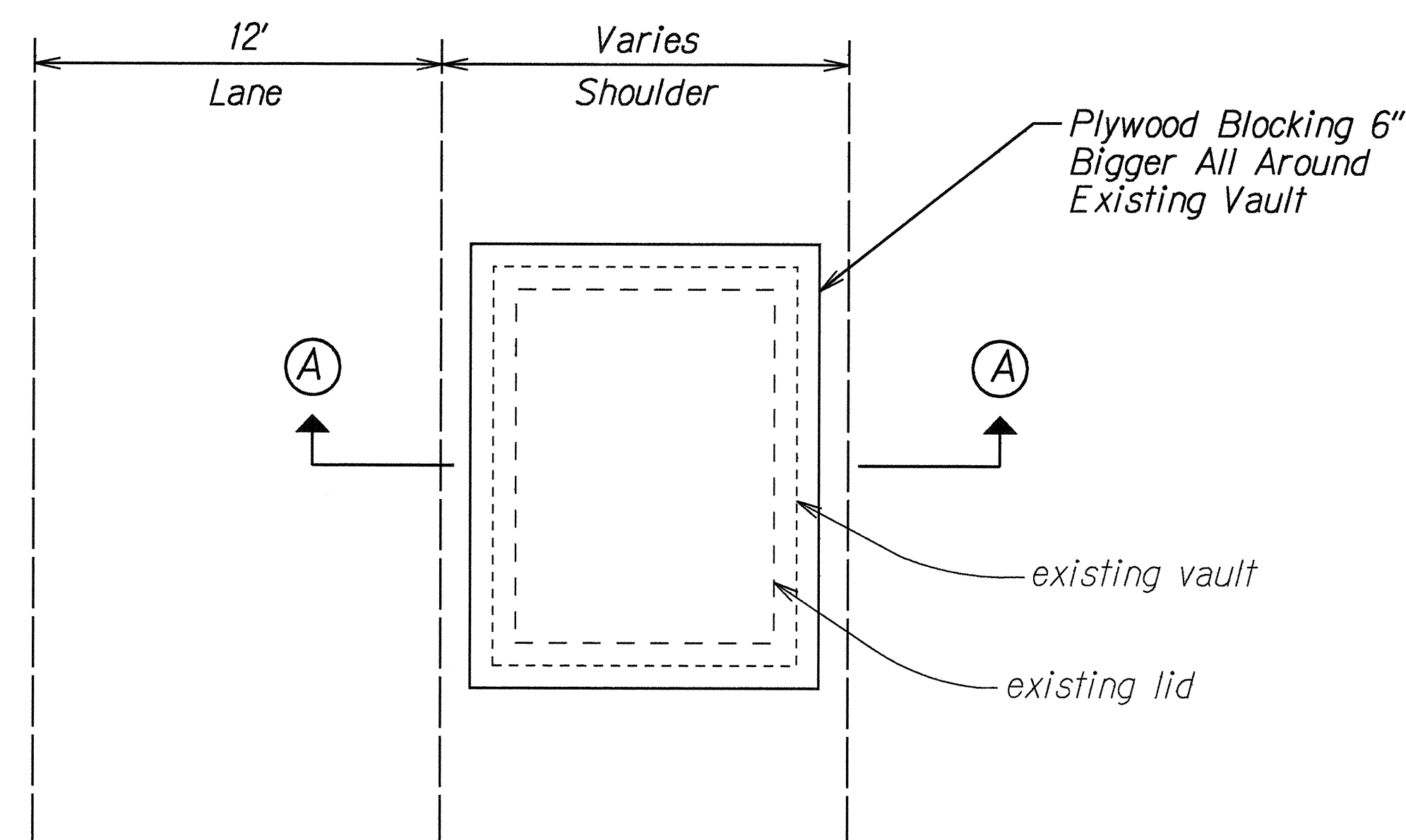
STATE OF HAWAII
DEPARTMENT OF TRANSPORTATION
HIGHWAYS DIVISION
TYPICAL PLANS
SECTIONS & DETAILS
KAUMUALII HIGHWAY RESURFACING
KUKUI GROVE TO HULEIA BRIDGE
Fed. Aid Proj. No. STP-050-1(15)
Scale: As Shown Date: Mar, 1995
SHEET No. 2 OF 4 SHEETS

ORIGINAL PLAN	SURVEY PLOTTED BY	DATE
NOTE BOOK	DRAWN BY	5/19/95
del. gress	DESIGNED BY	
No. 4/mk/1993	CHECKED BY	

FED. ROAD DIST. NO.	STATE	FED. AID PROJ. NO.	FISCAL YEAR	SHEET NO.	TOTAL SHEETS
HAWAII	HAW.	STP-050-1(15)	1995	7	36



SECTION A-A
Scale: 1" = 1'



PLAN
Not To Scale

BLOCK OUT DETAIL
Not To Scale

ORIGINAL PLAN	SURVEY PLOTTED BY	DATE
NOTE BOOK	DRAWN BY	5/19/95
ddl gree	DESIGNED BY	
N4/mk/5/95	CHECKED BY	

STATE OF HAWAII
DEPARTMENT OF TRANSPORTATION
HIGHWAYS DIVISION

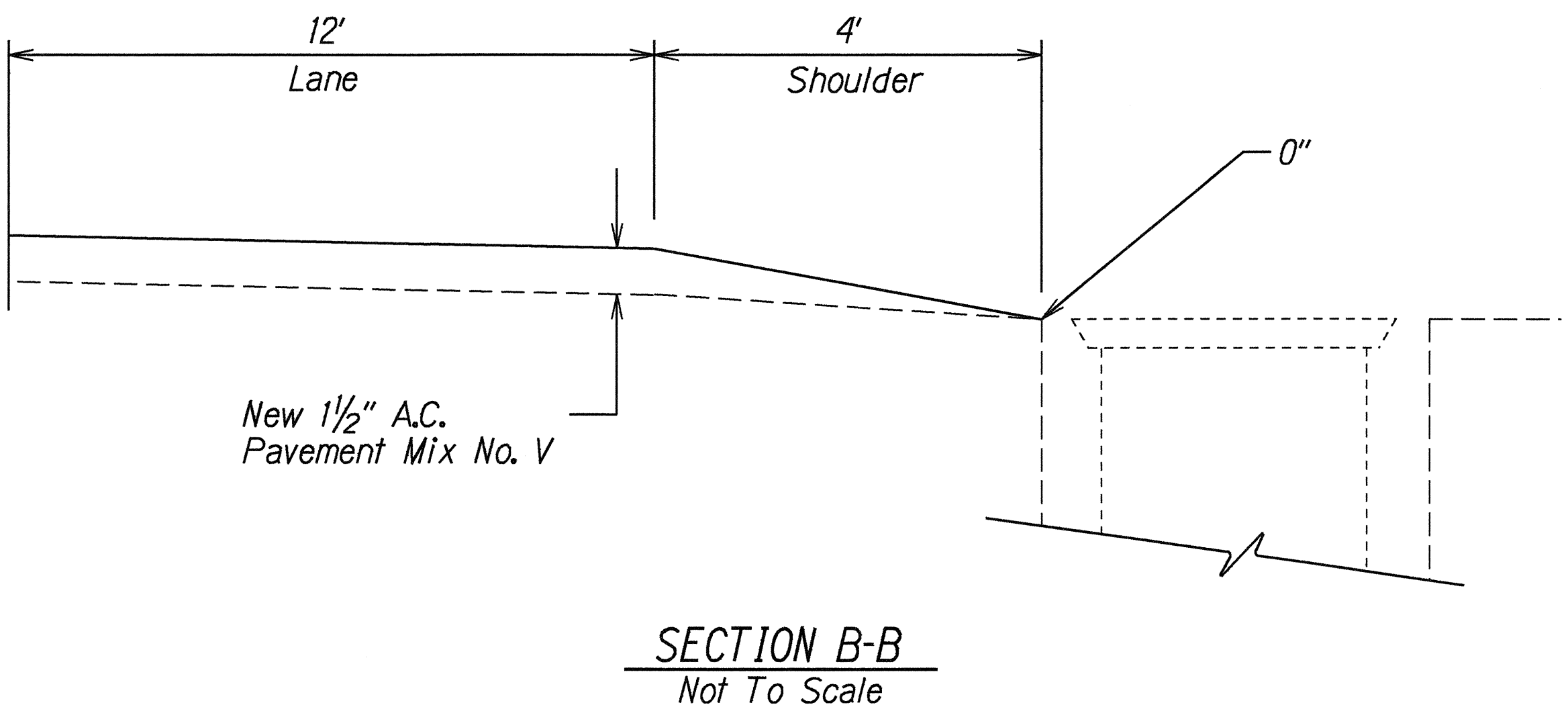
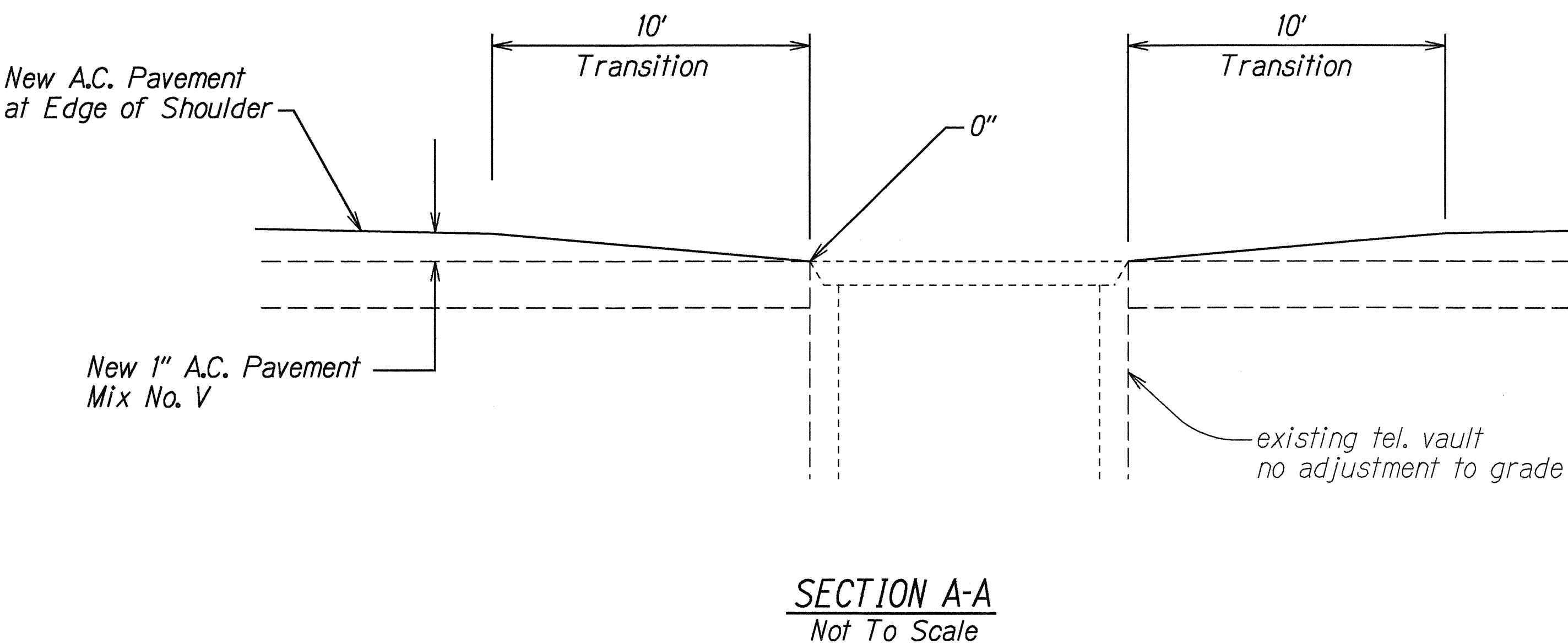
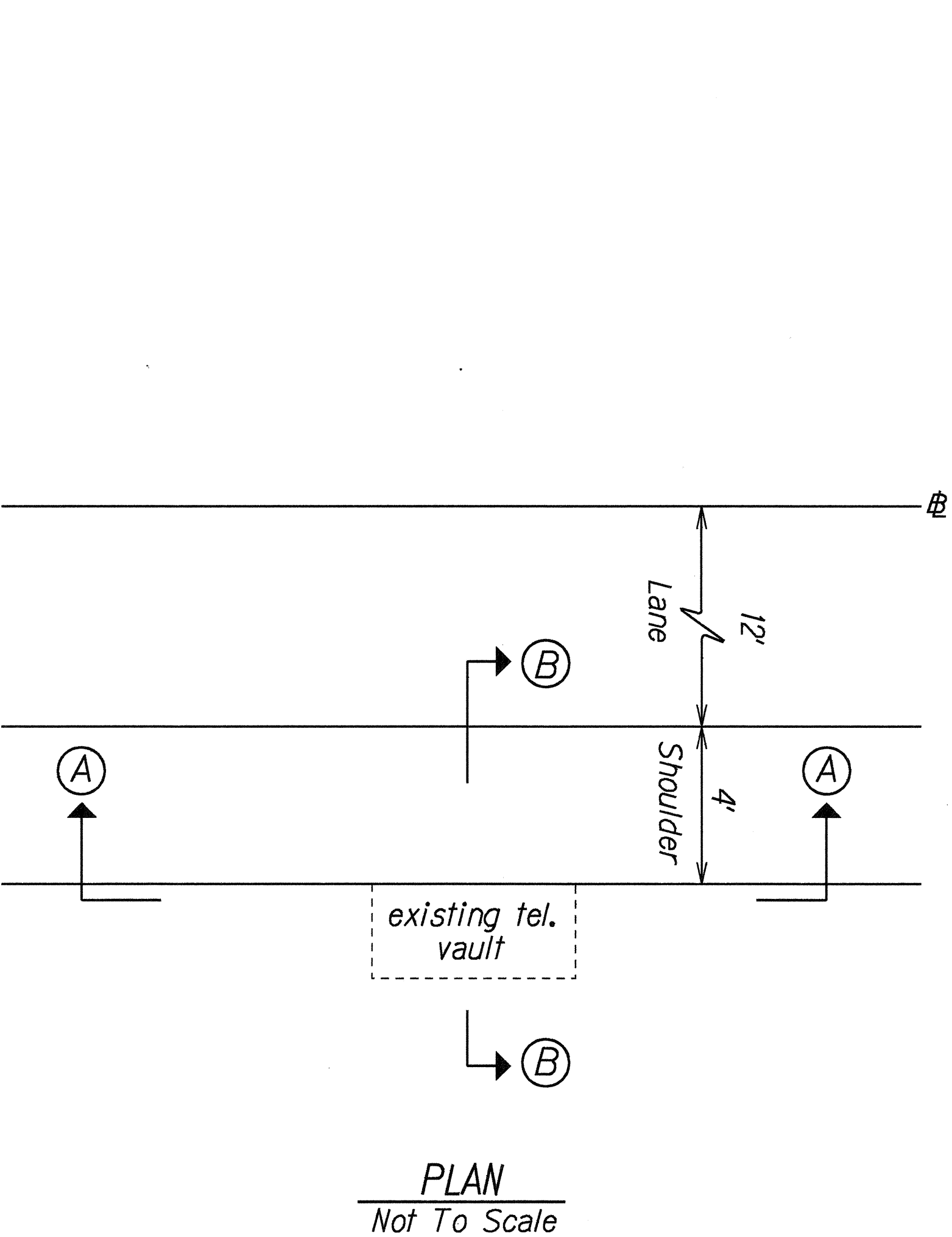
TYPICAL PLANS
SECTIONS & DETAILS

KAUMUALII HIGHWAY RESURFACING
KUKUI GROVE TO HULEIA BRIDGE
Fed. Aid Proj. No. STP-050-1(15)

Scale: As Shown Date: Apr, 1995

SHEET No. 3 OF 4 SHEETS

FED. ROAD DIST. NO.	STATE	FED. AID PROJ. NO.	FISCAL YEAR	SHEET NO.	TOTAL SHEETS
HAWAII	HAW.	STP-050-1(15)	1995	8	36



TAPER A.C. DETAIL AT EXISTING VAULTS
Not To Scale

ORIGINAL PLAN	SURVEY PLOTTED BY	DATE
NOTED	DRAWN BY	5/19/95
DESIGNED BY	CHECKED BY	
ddt gage		
N4/mkts07		

STATE OF HAWAII
DEPARTMENT OF TRANSPORTATION
HIGHWAYS DIVISION

TYPICAL PLANS
SECTIONS & DETAILS
KAUMUALII HIGHWAY RESURFACING
KUKUI GROVE TO HULEIA BRIDGE
Fed. Aid Proj. No. STP-050-1(15)
Scale: As Shown Date: Apr, 1995

SHEET No. 4 OF 4 SHEETS