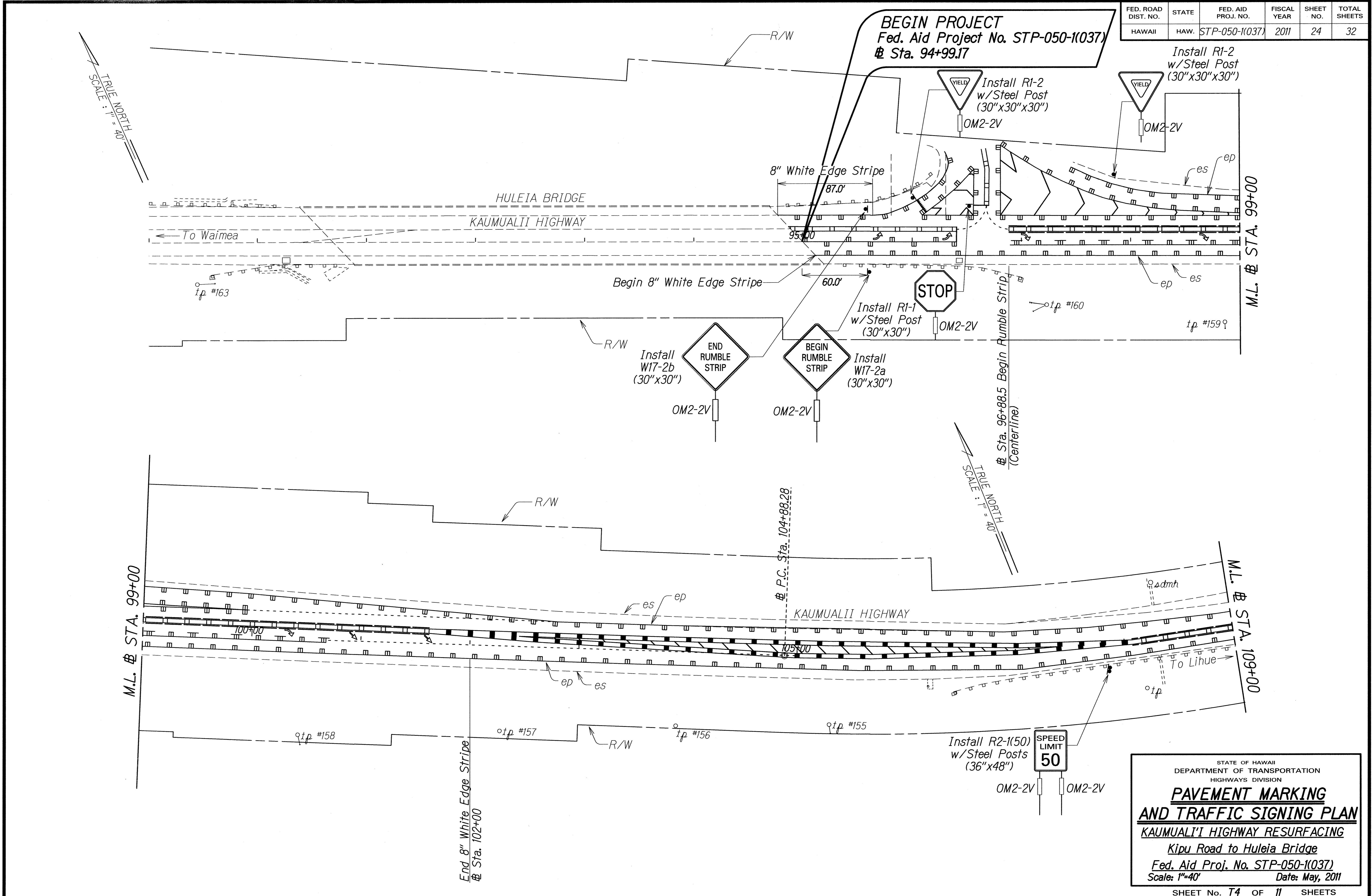


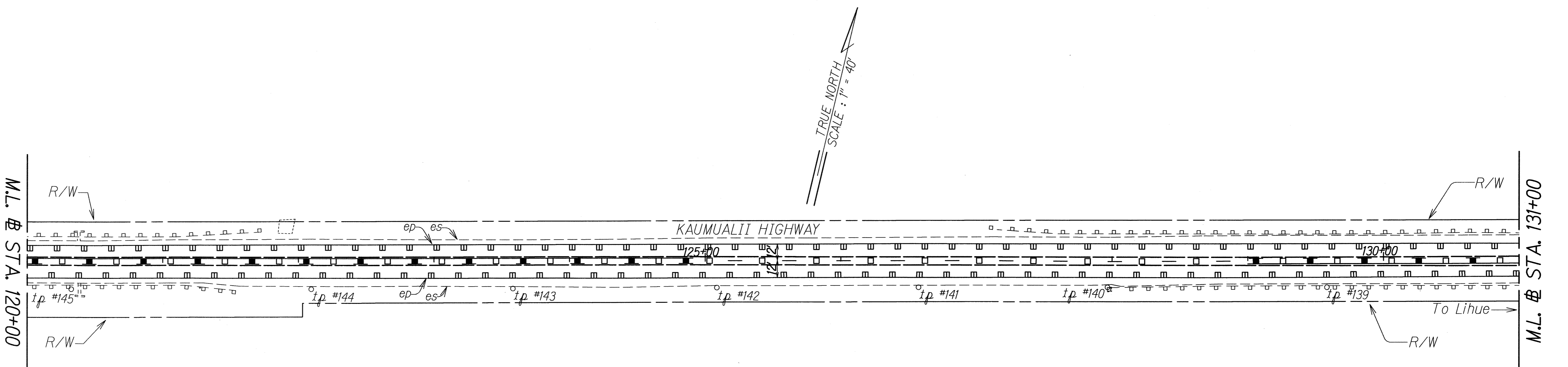
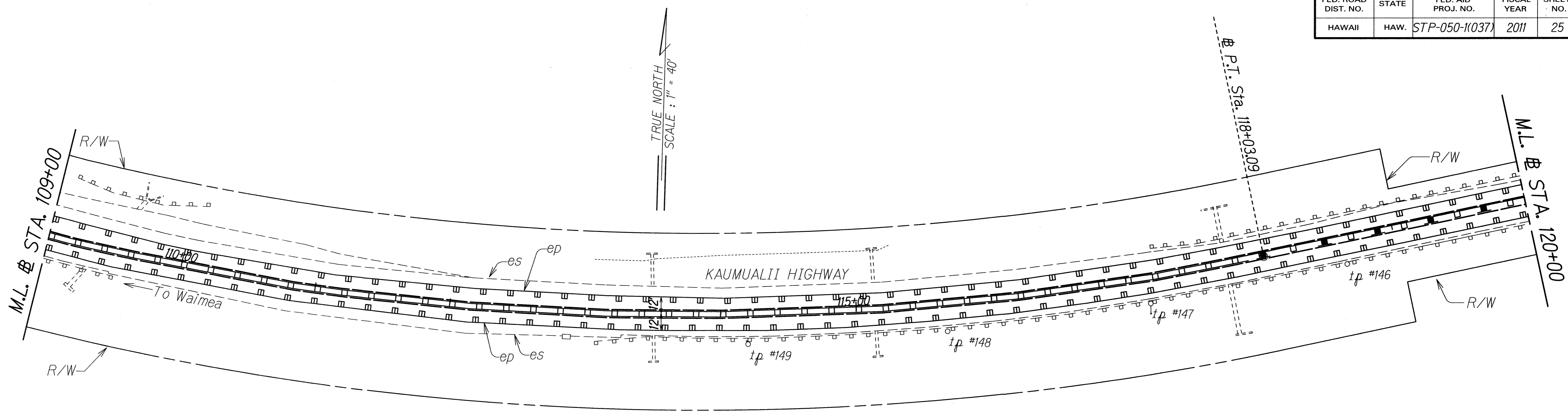
FED. ROAD DIST. NO.	STATE	FED. AID PROJ. NO.	FISCAL YEAR	SHEET NO.	TOTAL SHEETS
HAWAII	HAW.	STP-050-1(037)	2011	24	32



ORIGINAL PLAN	DATE
SURVEY PLOTTED BY	
DRAWN BY	
DESIGNED BY	
QUANTITIES BY	
CHECKED BY	

STATE OF HAWAII
DEPARTMENT OF TRANSPORTATION
HIGHWAYS DIVISION
**PAVEMENT MARKING
AND TRAFFIC SIGNING PLAN**
KAUMUALII HIGHWAY RESURFACING
Kipu Road to Huleia Bridge
Fed. Aid Proj. No. STP-050-1(037)
Scale: 1"=40' Date: May, 2011

FED. ROAD DIST. NO.	STATE	FED. AID PROJ. NO.	FISCAL YEAR	SHEET NO.	TOTAL SHEETS
HAWAII	HAW.	STP-050-1(037)	2011	25	32



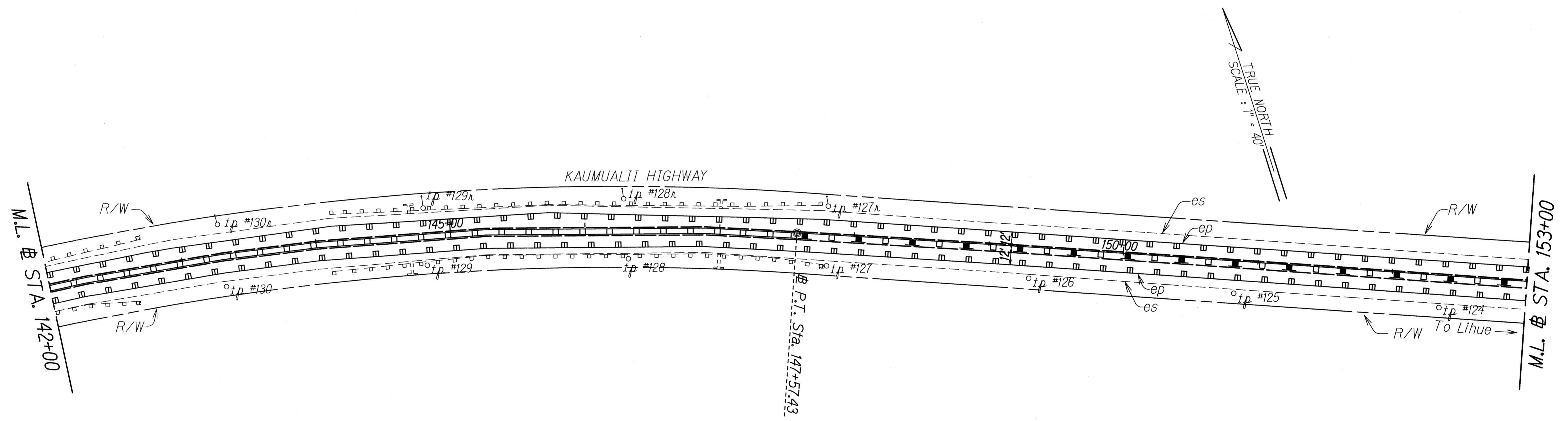
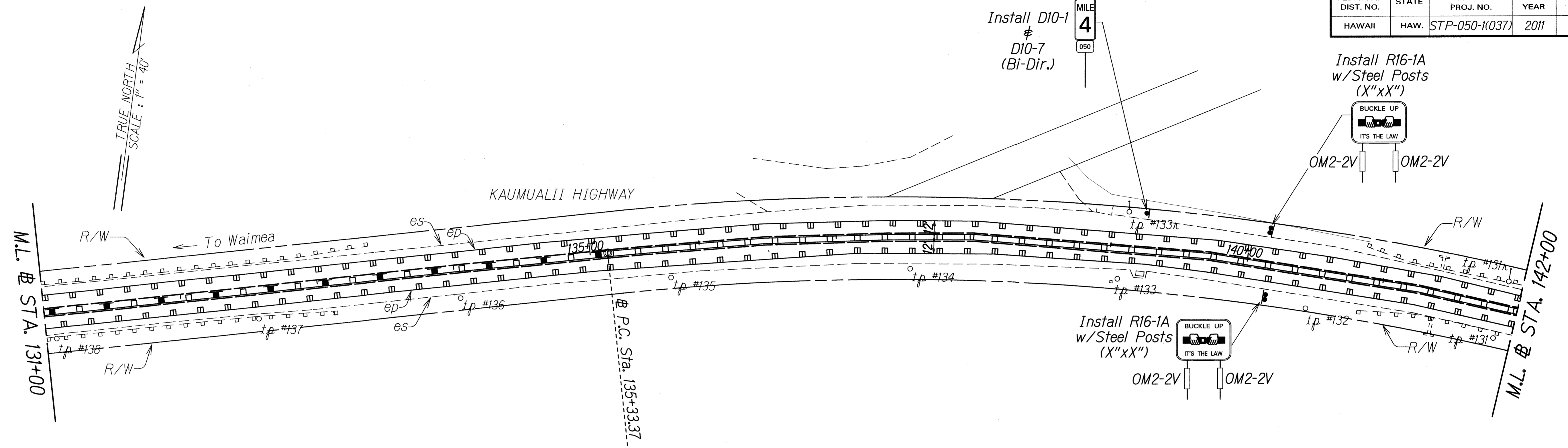
ORIGINAL PLAN	SURVEY PLOTTED BY	DATE
NOTE BOOK	DRAWN BY	
DESIGNED BY	DESIGNED BY	
QUANTITIES BY	QUANTITIES BY	
CHECKED BY	CHECKED BY	

STATE OF HAWAII
DEPARTMENT OF TRANSPORTATION
HIGHWAYS DIVISION

**PAVEMENT MARKING
AND TRAFFIC SIGNING PLAN**

KAUMUALII HIGHWAY RESURFACING
Kipu Road to Huleia Bridge
Fed. Aid Proj. No. STP-050-1(037)
Scale: 1" = 40' Date: May, 2011

FED. ROAD DIST. NO.	STATE	FED. AID PROJ. NO.	FISCAL YEAR	SHEET NO.	TOTAL SHEETS
HAWAII	HAW.	STP-050-1(037)	2011	26	32



DATE	_____
SURVEY PLOTTED BY	_____
DRAWN BY	_____
DESIGNED BY	_____
QUANTITIES BY	_____
CHECKED BY	_____
ORIGINAL PLAN	_____
NOTE BOOK	_____
NO.	_____
DATE	_____

STATE OF HAWAII
DEPARTMENT OF TRANSPORTATION
HIGHWAYS DIVISION

**PAVEMENT MARKING
AND TRAFFIC SIGNING PLAN**

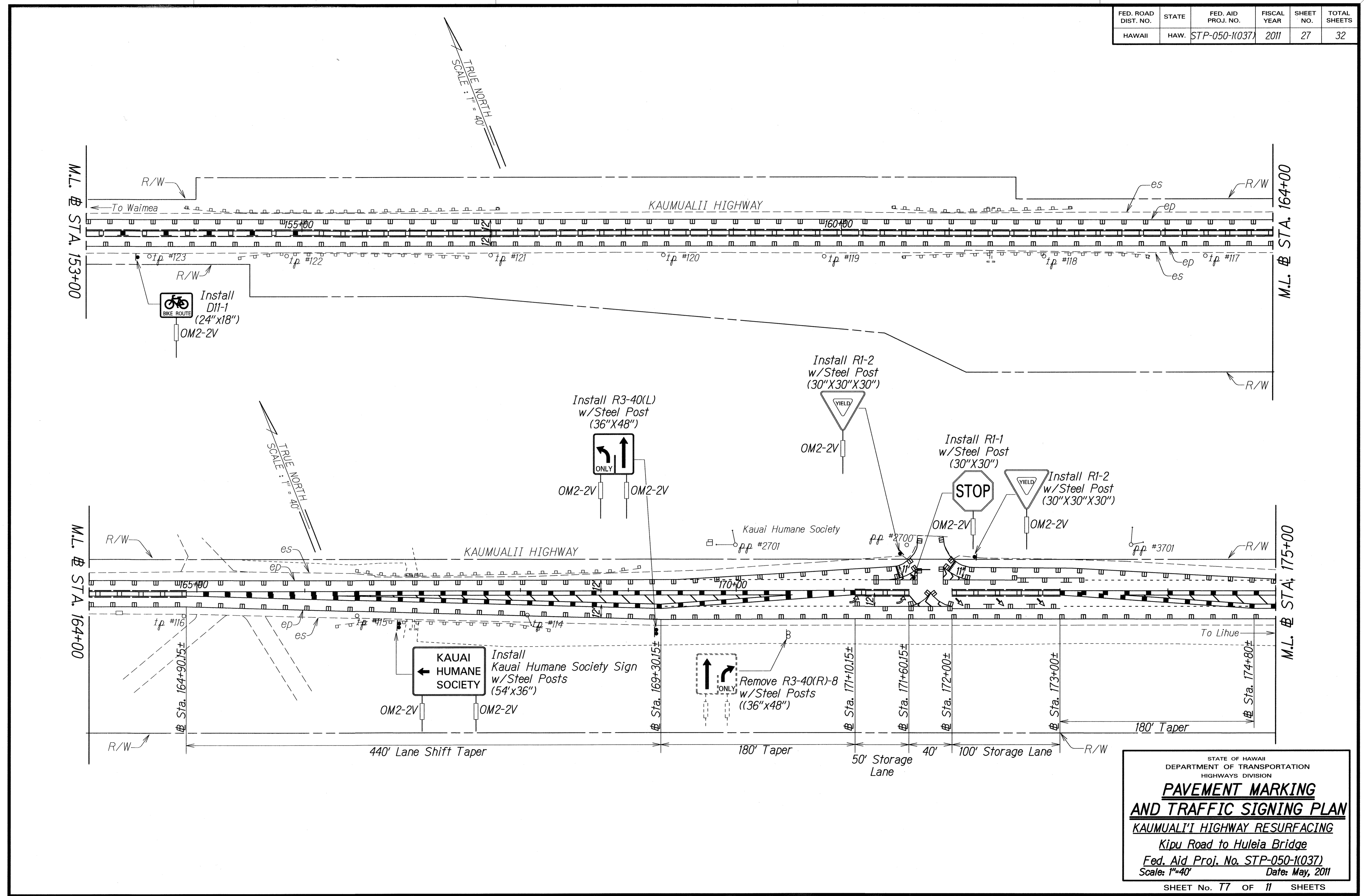
KAUMUALII HIGHWAY RESURFACING

Kipu Road to Huleia Bridge

Fed. Aid Proj. No. STP-050-1(037)

Scale: 1" = 40' Date: May, 2011

FED. ROAD DIST. NO.	STATE	FED. AID PROJ. NO.	FISCAL YEAR	SHEET NO.	TOTAL SHEETS
HAWAII	HAW.	STP-050-1037	2011	27	32



ORIGINAL PLANS	DATE
DESIGNED BY	
TRACED BY	
NOTED BY	
QUANTITIES BY	
CHECKED BY	

STATE OF HAWAII
DEPARTMENT OF TRANSPORTATION
HIGHWAYS DIVISION

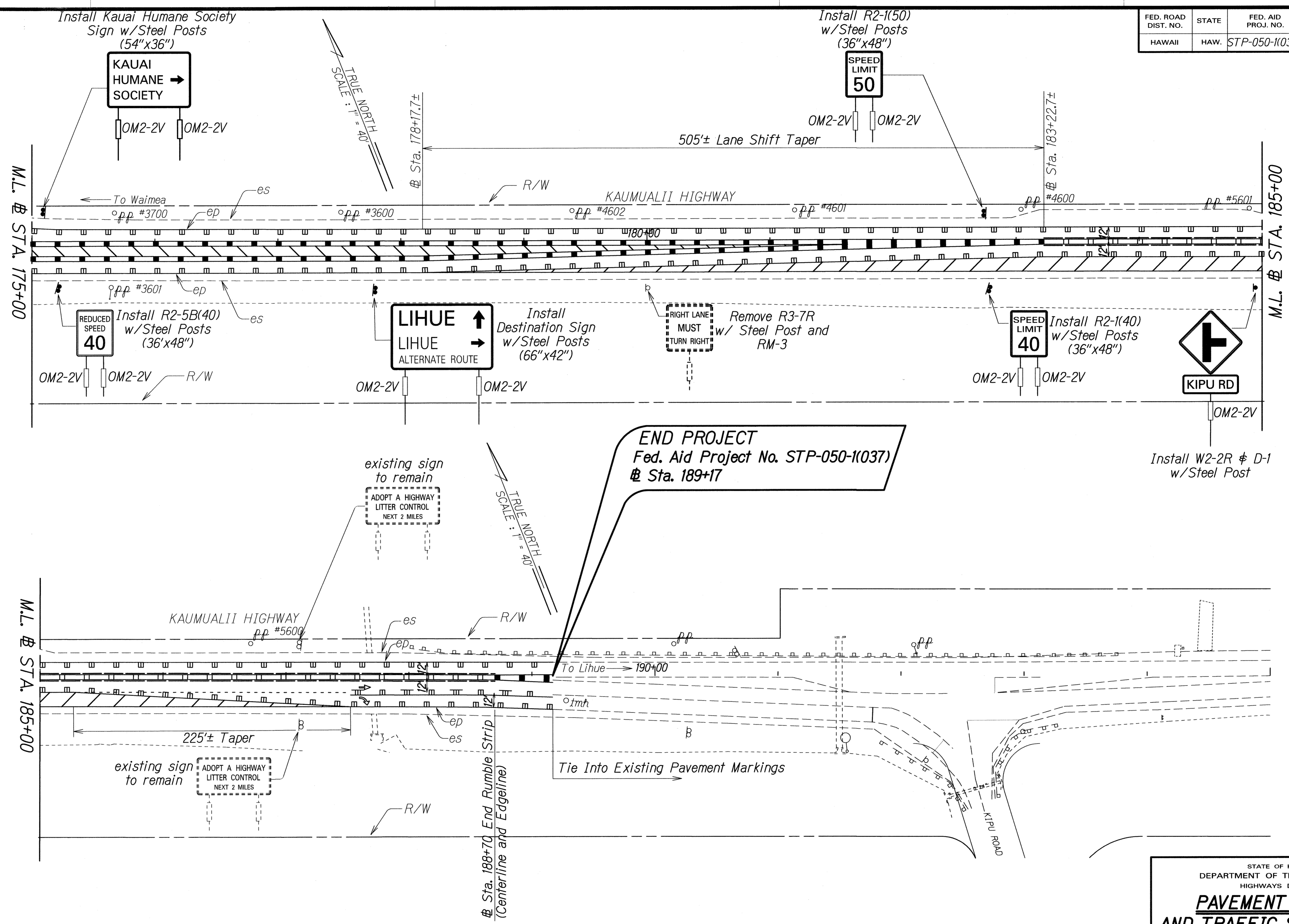
**PAVEMENT MARKING
AND TRAFFIC SIGNING PLAN**

KAUMUALI'I HIGHWAY RESURFACING

Kipu Road to Huleia Bridge

Fed. Aid Proj. No. STP-050-1037
Scale: 1"=40' Date: May, 2011

FED. ROAD DIST. NO.	STATE	FED. AID PROJ. NO.	FISCAL YEAR	SHEET NO.	TOTAL SHEETS
HAWAII	HAW.	STP-050-1(037)	2011	28	32



END PROJECT
 Fed. Aid Project No. STP-050-1(037)
 # Sta. 189+17

ORIGINAL PLAN	SURVEY PLOTTED BY	DATE
NOTE BOOK	DRAWN BY	
DESIGNED BY	QUANTITIES BY	
CHECKED BY		

STATE OF HAWAII
 DEPARTMENT OF TRANSPORTATION
 HIGHWAYS DIVISION

**PAVEMENT MARKING
 AND TRAFFIC SIGNING PLAN**

KAUMUALII HIGHWAY RESURFACING
 Kipu Road to Huleia Bridge
 Fed. Aid Proj. No. STP-050-1(037)
 Scale: 1"=40' Date: May, 2011