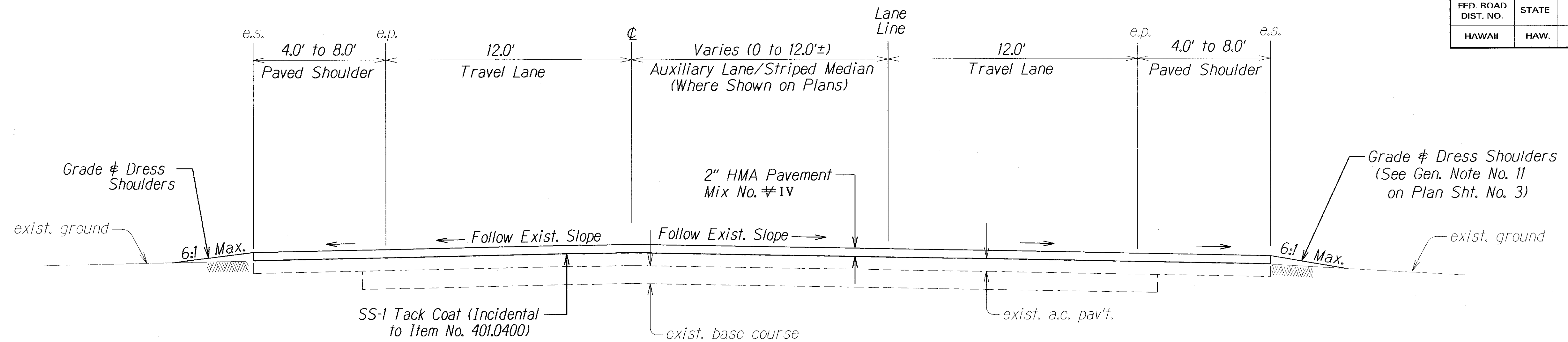
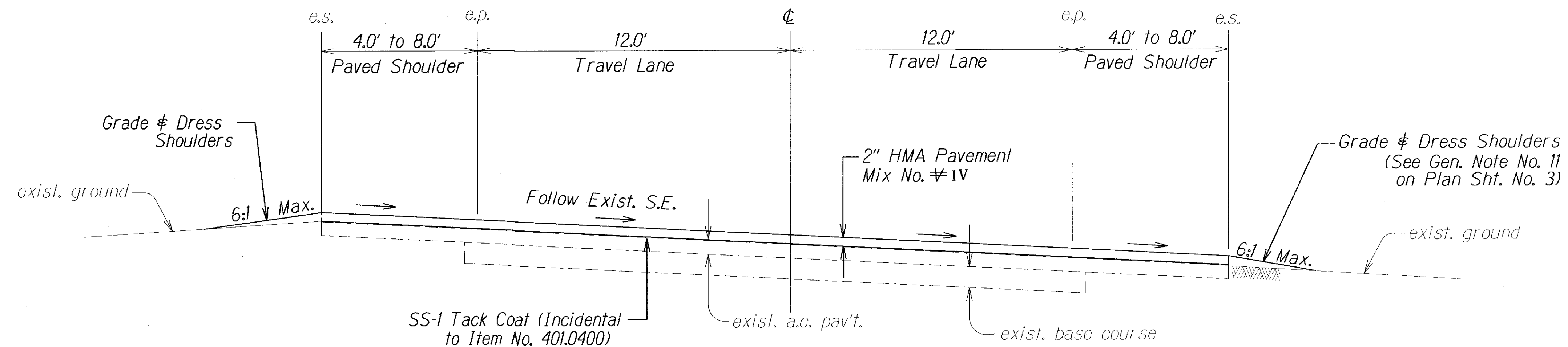


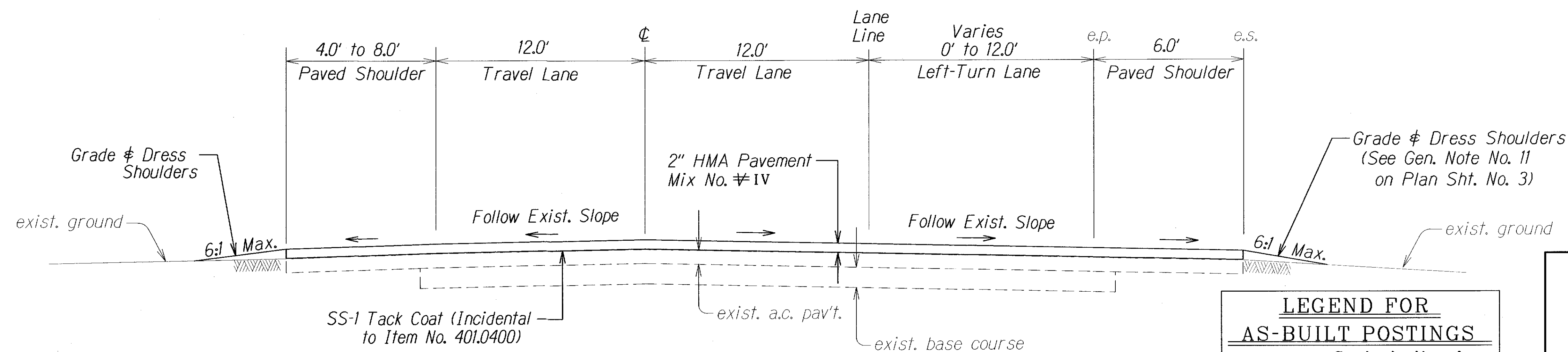
FED. ROAD DIST. NO.	STATE	PROJ. NO.	FISCAL YEAR	SHEET NO.	TOTAL SHEETS
HAWAII	HAW.	50D-01-11MR	2014	8	32



TYPICAL TANGENT SECTION (# STA. 94+99.17± to # STA. 185+27.38±)
Not to Scale



TYPICAL SECTION ON SUPERELEVATION
Not to Scale



TYPICAL SECTION (# STA. 185+27.38± to # STA. 189+17±)
Not to Scale

LEGEND FOR AS-BUILT POSTINGS	
	Squiggly line for as-built deletion
	Double line for as-built deletion
Roadway	Text for as-built posting

STATE OF HAWAII
DEPARTMENT OF TRANSPORTATION
HIGHWAYS DIVISION

TYPICAL SECTIONS

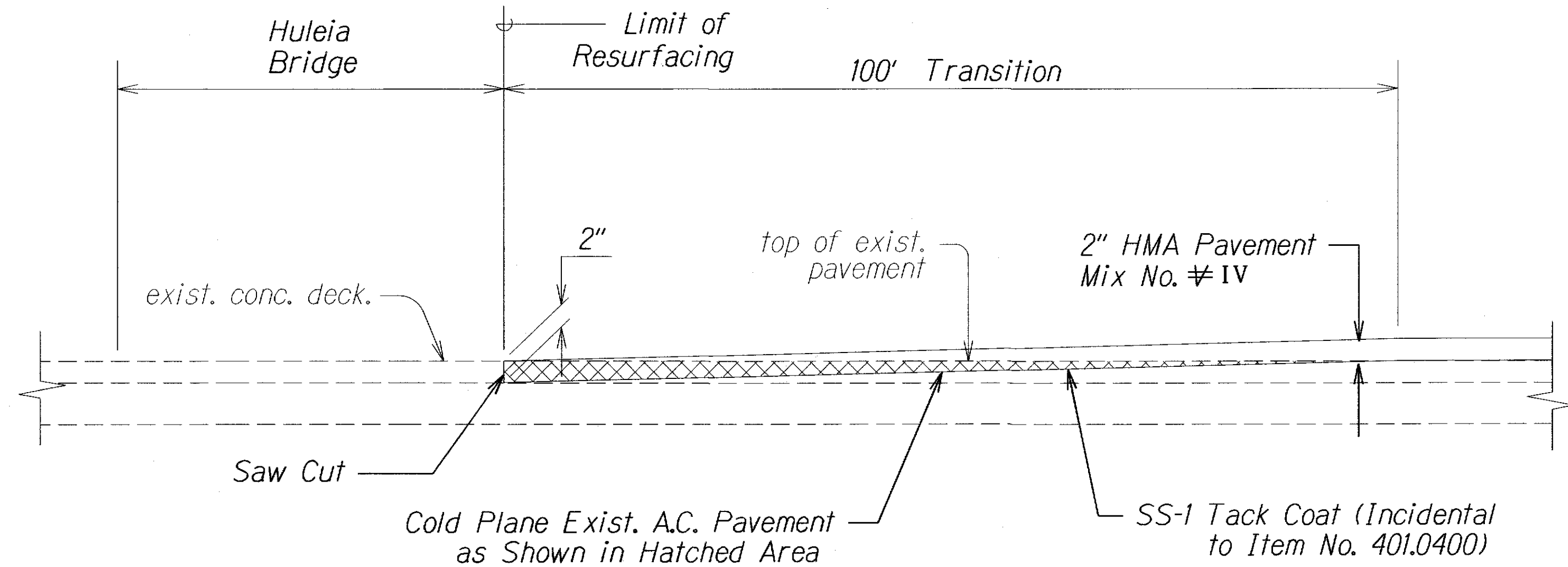
KAUMUALII HIGHWAY RESURFACING
Kipu Road to Huleia Bridge
Proj. No. 50D-01-11MR

Not to Scale Date: Oct. 2013

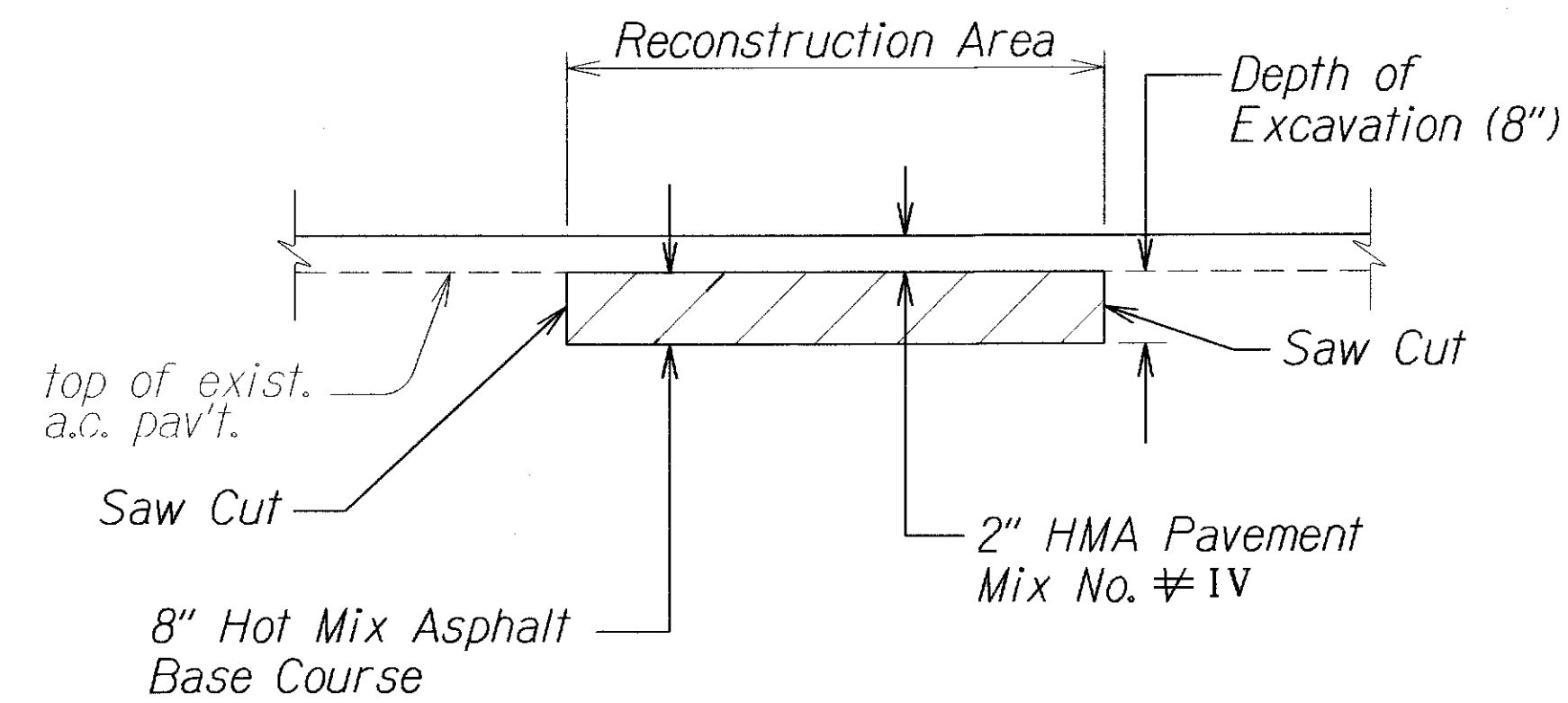
SHEET No. 1 OF 4 SHEETS

"AS-BUILT"

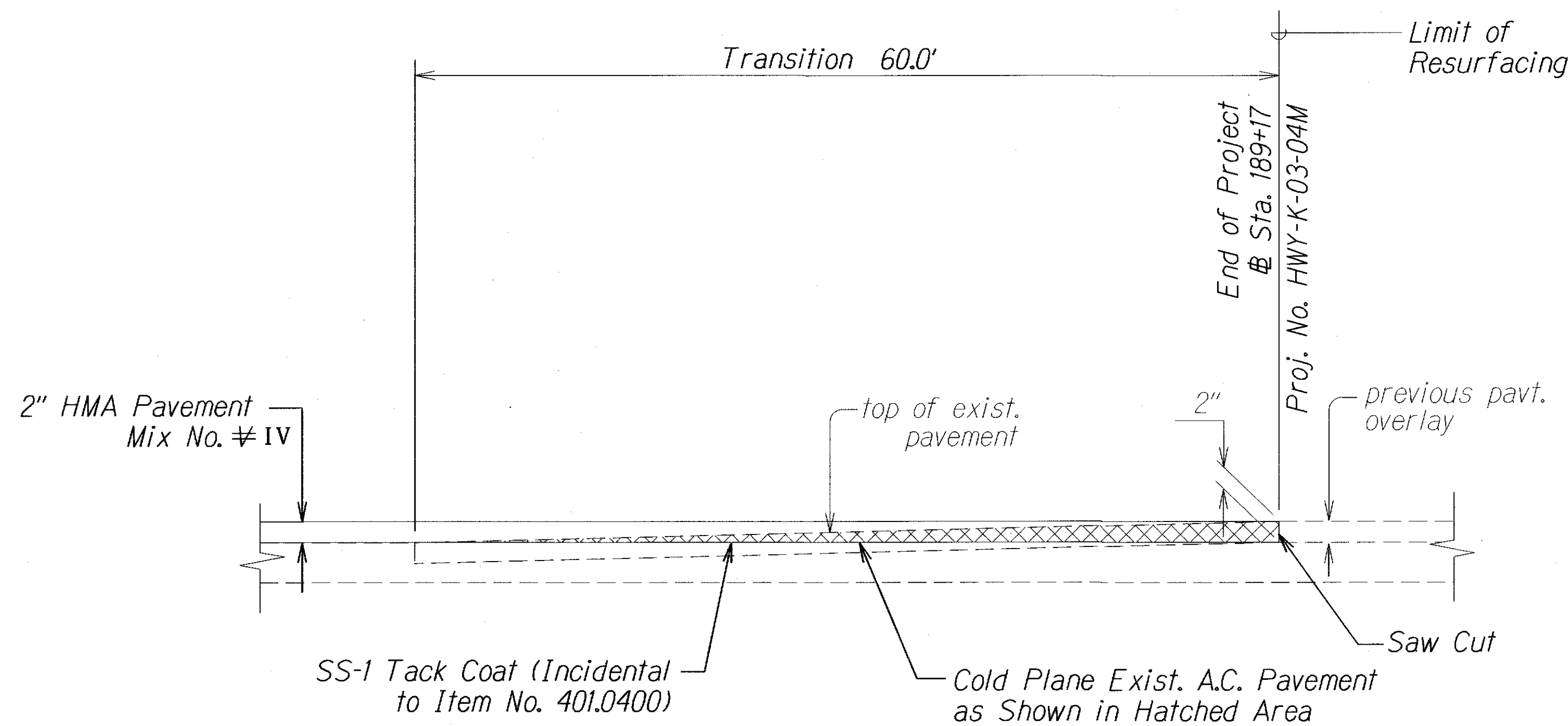
FED. ROAD DIST. NO.	STATE	PROJ. NO.	FISCAL YEAR	SHEET NO.	TOTAL SHEETS
HAWAII	HAW.	50D-01-11MR	2014	9	32



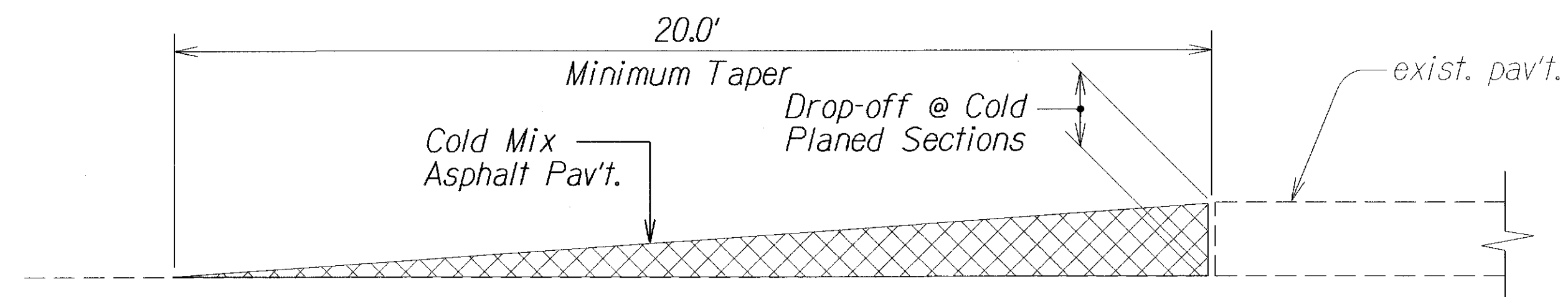
COLD PLANED TRANSITION TO EXIST'G A.C. PAVEMENT
AT BRIDGE APPROACH
Not to Scale



A.C. PAVEMENT RECONSTRUCTION DETAIL
Not to Scale



COLD PLANED TRANSITION TO EXIST'G A.C. PAVEMENT
AT END OF PROJECT
Not to Scale



TEMPORARY TRANSITION AT COLD PLANED AREAS
Not to Scale

Note: Contractor shall construct temporary pavement taper to prevent sharp pavement drop-offs at all cold planed sections. Prior to final Asphalt Pavement placement, temporary pavement taper shall be removed.

LEGEND FOR AS-BUILT POSTINGS	
	Squiggly line for as-built deletion
	Double line for as-built deletion
Roadway	Text for as-built posting

STATE OF HAWAII
DEPARTMENT OF TRANSPORTATION
HIGHWAYS DIVISION

TYPICAL SECTIONS

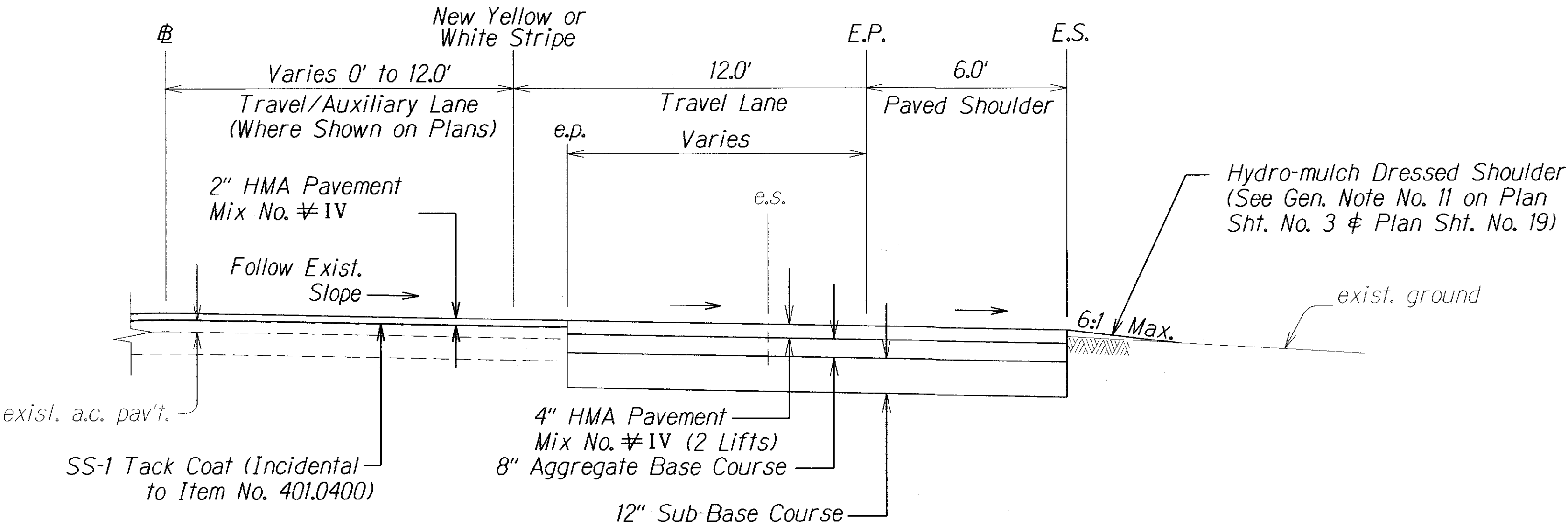
KAUMUALII HIGHWAY RESURFACING
Kipu Road to Huleia Bridge
Proj. No. 50D-01-11MR

Not to Scale Date: Oct. 2013

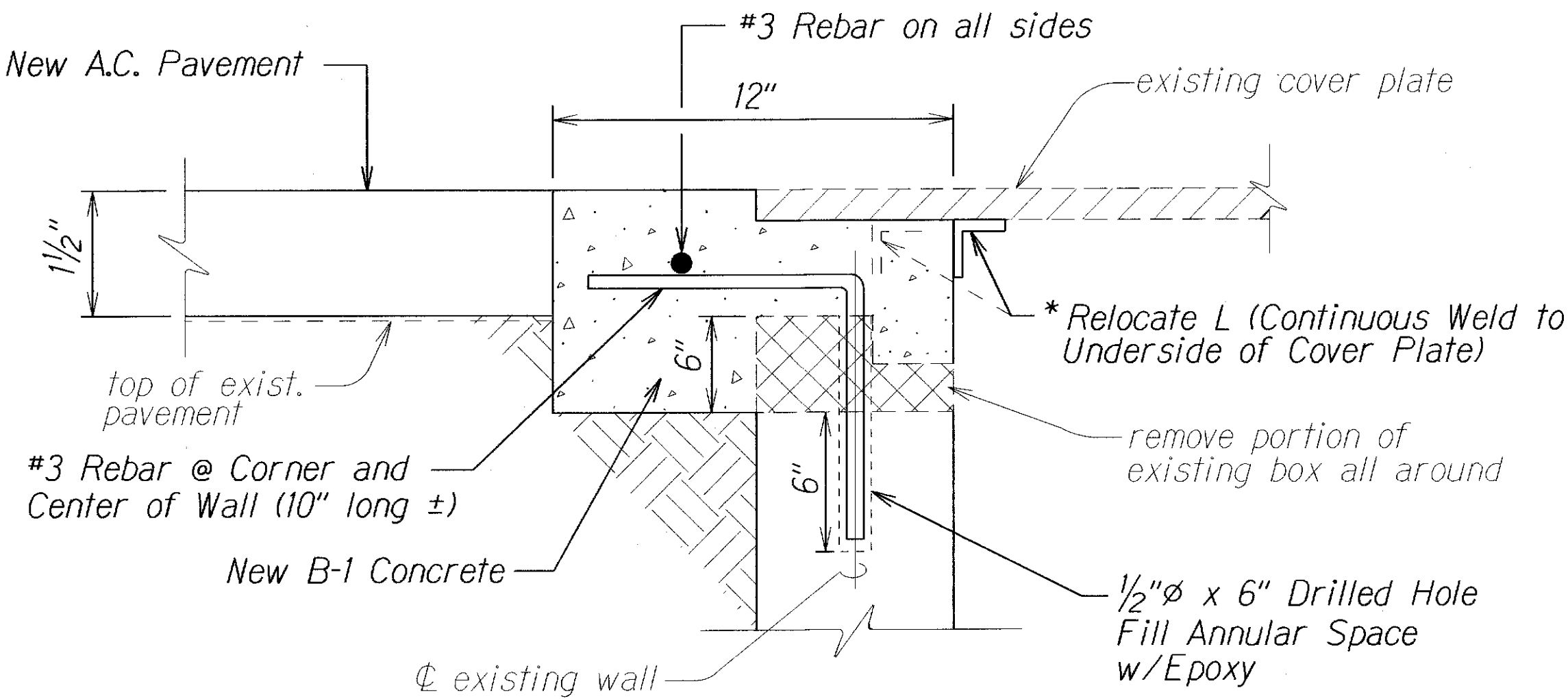
SHEET No. 2 OF 4 SHEETS

ORIGINAL PLAN	DATE
SURVEY PLOTTED BY	
DRAWN BY	
DESIGNED BY	
QUANTITIES BY	
CHECKED BY	
NOTE BOOK	
8/10/13/2013	

FED. ROAD DIST. NO.	STATE	PROJ. NO.	FISCAL YEAR	SHEET NO.	TOTAL SHEETS
HAWAII	HAW.	50D-01-11MR	2014	10	32

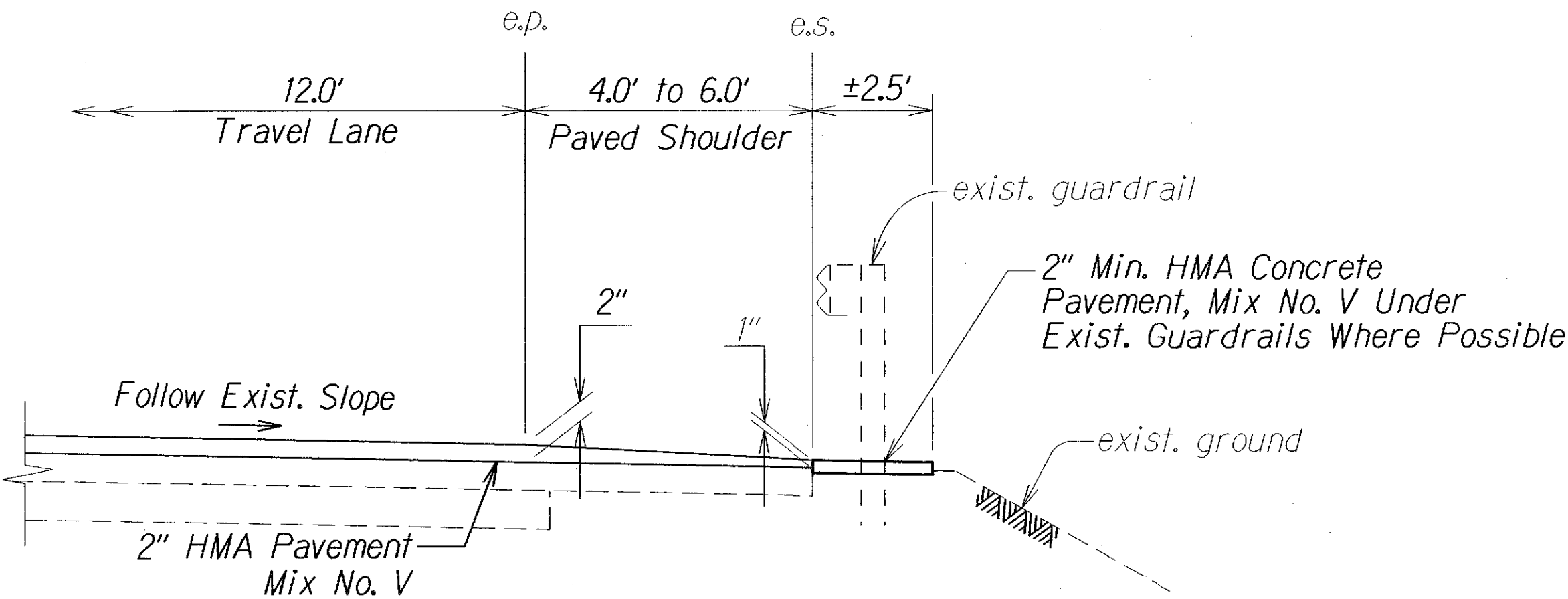


TYPICAL WIDENED ROADWAY SECTION
FROM STA. 164+90.14± TO STA. 171+22±
Not to Scale

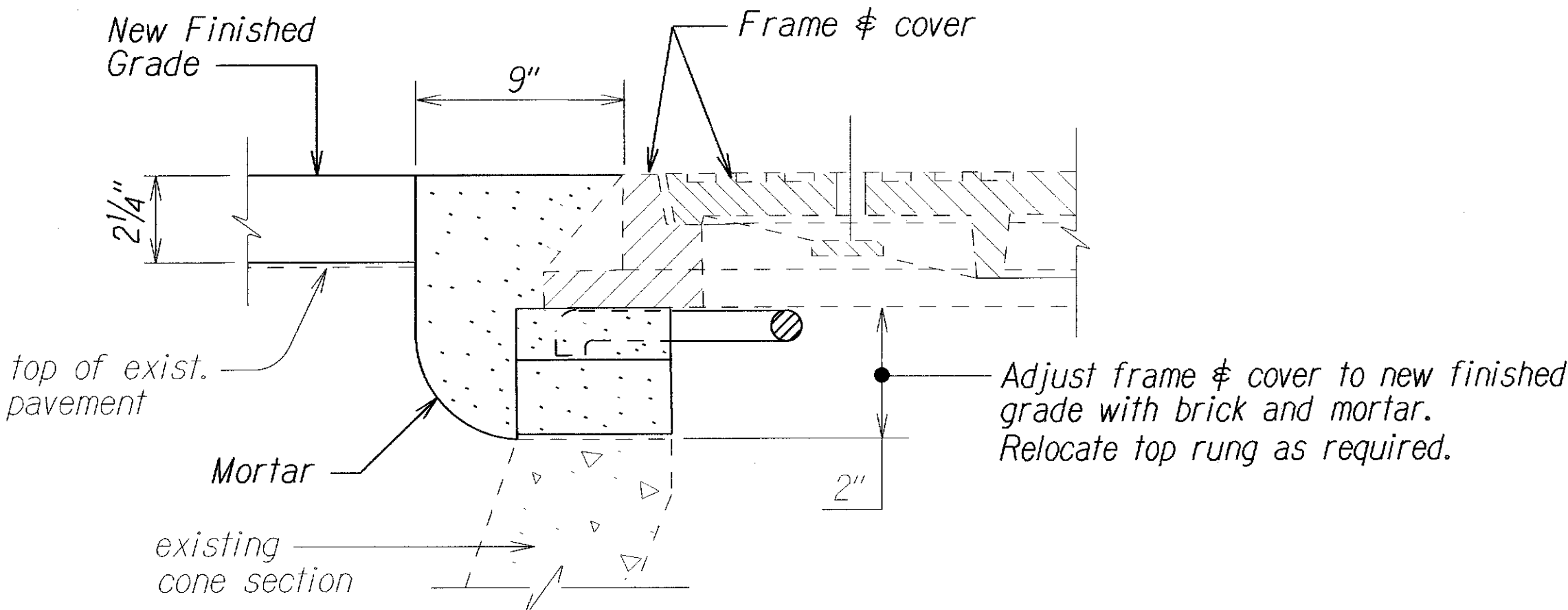


UTILITY BOX ADJUSTMENT DETAIL
Not to Scale

* NOTE: For utility boxes with cover frames, the Contractor shall remove and adjust the frames to the new finished grade by embedding the frame in new concrete section as shown above



RESURFACING AT GUARDRAIL LOCATIONS
Not to Scale



TYPICAL MANHOLE FRAME & COVER ADJUSTMENT
(SEWER, WATER, STORM DRAIN & UTILITY MANHOLES)
Not to Scale

NOTE: As an option, the Contractor may use an Adjus-to-Grade four-section extension ring with Safe-Tite seal, as manufactured by the National Utility Products Co. (NUPCO), or approved equal. Mortar shall be colored to match A.C. pavement.

LEGEND FOR AS-BUILT POSTINGS	
	Squiggly line for as-built deletion
	Double line for as-built deletion
Roadway	Text for as-built posting

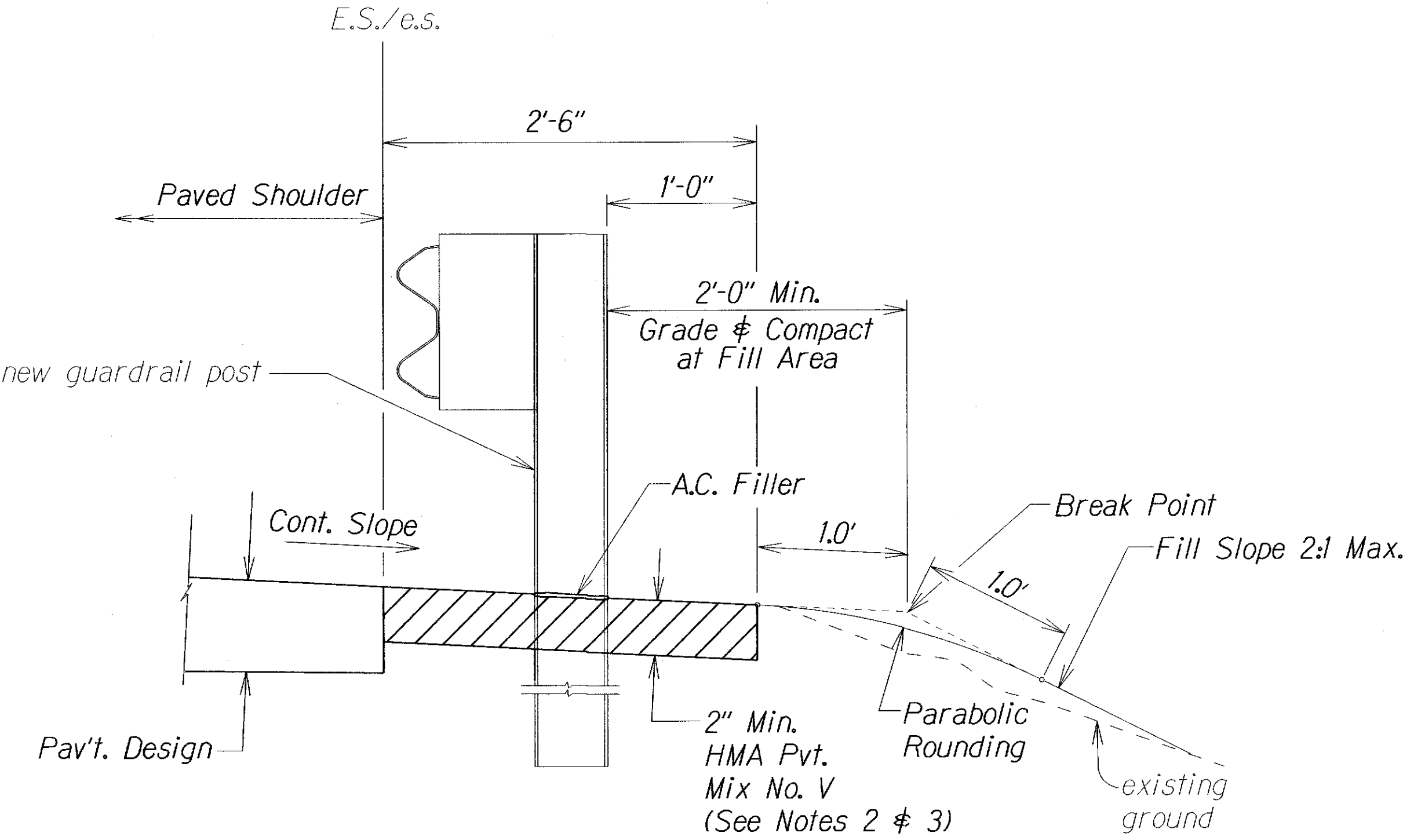
STATE OF HAWAII
DEPARTMENT OF TRANSPORTATION
HIGHWAYS DIVISION

TYPICAL SECTIONS
KAUMUALII HIGHWAY RESURFACING
Kipu Road to Huleia Bridge
Proj. No. 50D-01-11MR

Scale: Not to Scale Date: Oct. 2103
SHEET No. 3 OF 4 SHEETS

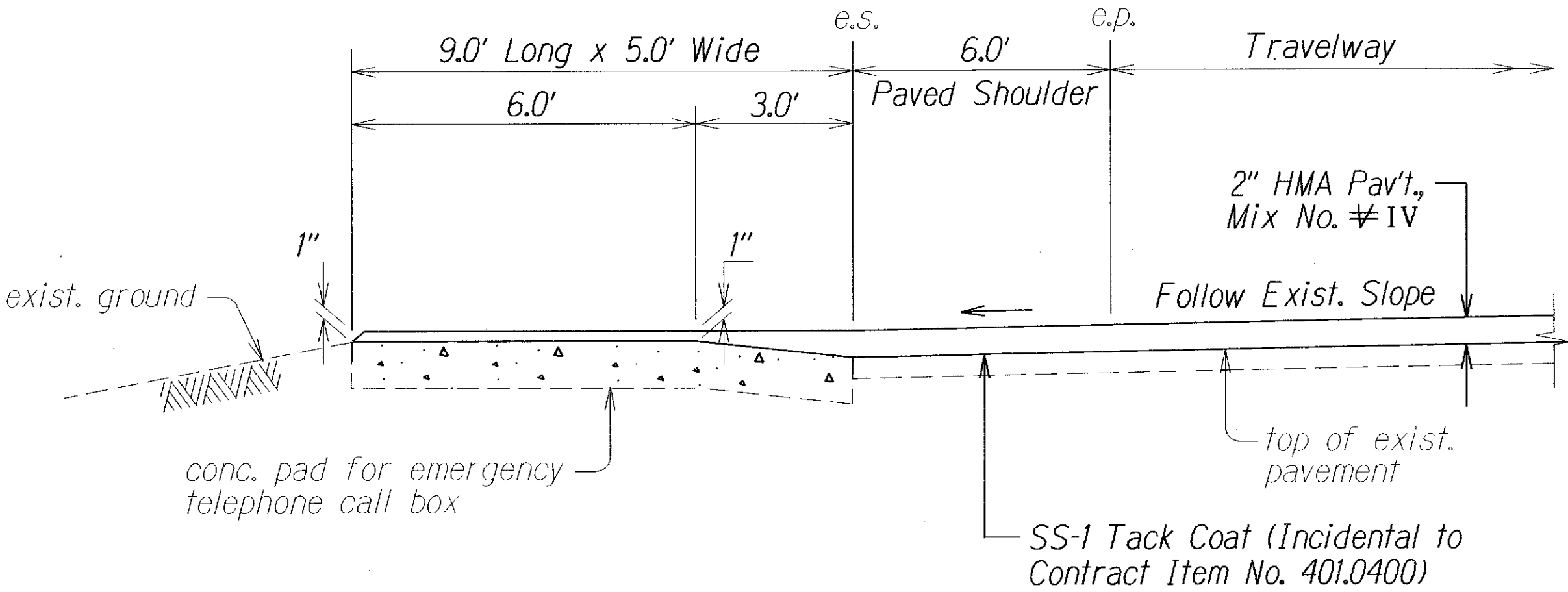
SURVEY PLOTTED BY	DATE
DRAWN BY	
TRACED BY	
QUANTITIES BY	
CHECKED BY	
ORIGINAL PLAN	
NOTE BOOK	
REVISIONS	
CHECKED BY	

FED. ROAD DIST. NO.	STATE	PROJ. NO.	FISCAL YEAR	SHEET NO.	TOTAL SHEETS
HAWAII	HAW.	50D-01-11MR	2014	11	32



- NOTES:
- Asphalt concrete pavement shall be constructed prior to installation of guardrail.
 - Dress and hydro-mulch fill/cut areas and shall be considered incidental to various contract items.

ELEVATION
TYPICAL ASPHALT PAVEMENT UNDER GUARDRAIL
±STA. 166+13 to ±STA. 167+84
 Not to Scale



RESURFACING AT EMERGENCY TELEPHONE BOX
 Not to Scale

ORIGINAL PLAN	SURVEY PLOTTED BY	DATE
NOTE BOOK	DRAWN BY	
KEBERNE	TRACED BY	
8/1/10/10/10	CHECKED BY	

LEGEND FOR AS-BUILT POSTINGS	
	Squiggly line for as-built deletion
	Double line for as-built deletion
Roadway	Text for as-built posting

STATE OF HAWAII DEPARTMENT OF TRANSPORTATION HIGHWAYS DIVISION	
<u>TYPICAL SECTIONS</u>	
<u>KAUMUALII HIGHWAY RESURFACING</u>	
<u>Kipu Road to Huleia Bridge</u>	
<u>Proj. No. 50D-01-11MR</u>	
Not to Scale	Date: Oct. 2013
SHEET No. 4 OF 4 SHEETS	