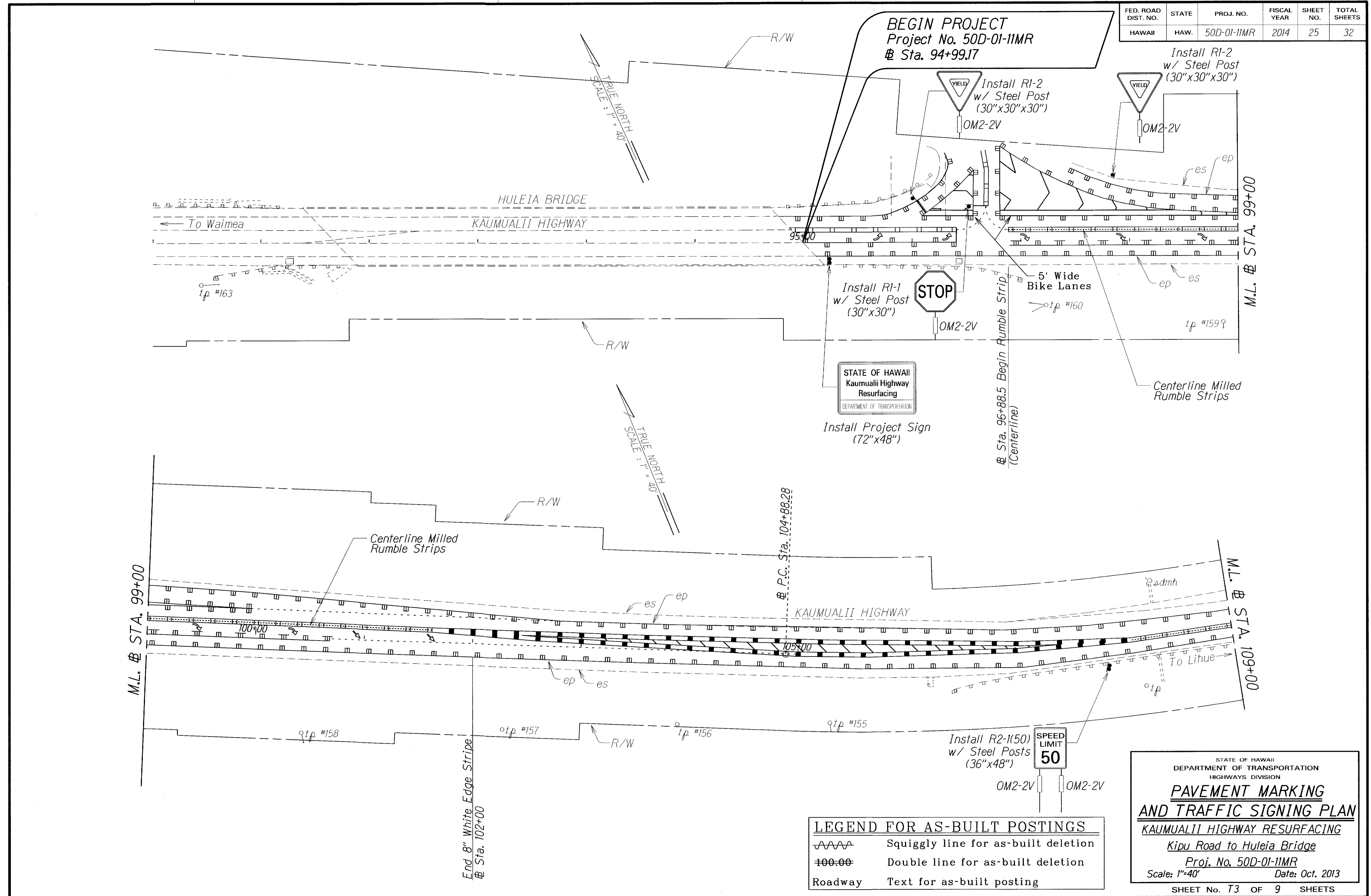


FED. ROAD DIST. NO.	STATE	PROJ. NO.	FISCAL YEAR	SHEET NO.	TOTAL SHEETS
HAWAII	HAW.	50D-01-11MR	2014	25	32



ORIGINAL PLAN	SURVEY PLOTTED BY	DATE
NOTE BOOK	DRAWN BY	
DESIGNED BY		
QUANTITIES BY		
CHECKED BY		

LEGEND FOR AS-BUILT POSTINGS	
	Squiggly line for as-built deletion
	Double line for as-built deletion
Roadway	Text for as-built posting

STATE OF HAWAII
DEPARTMENT OF TRANSPORTATION
HIGHWAYS DIVISION

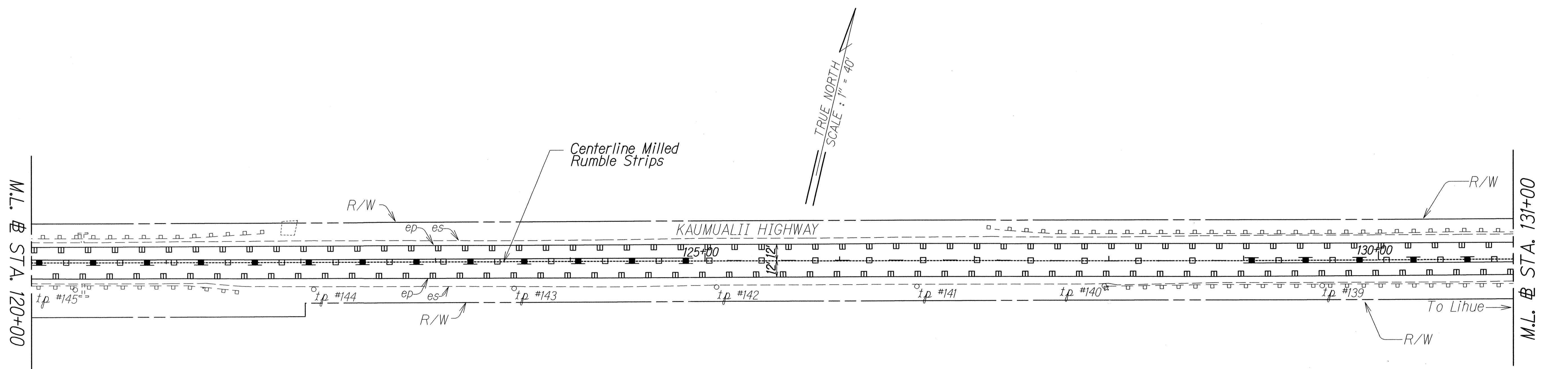
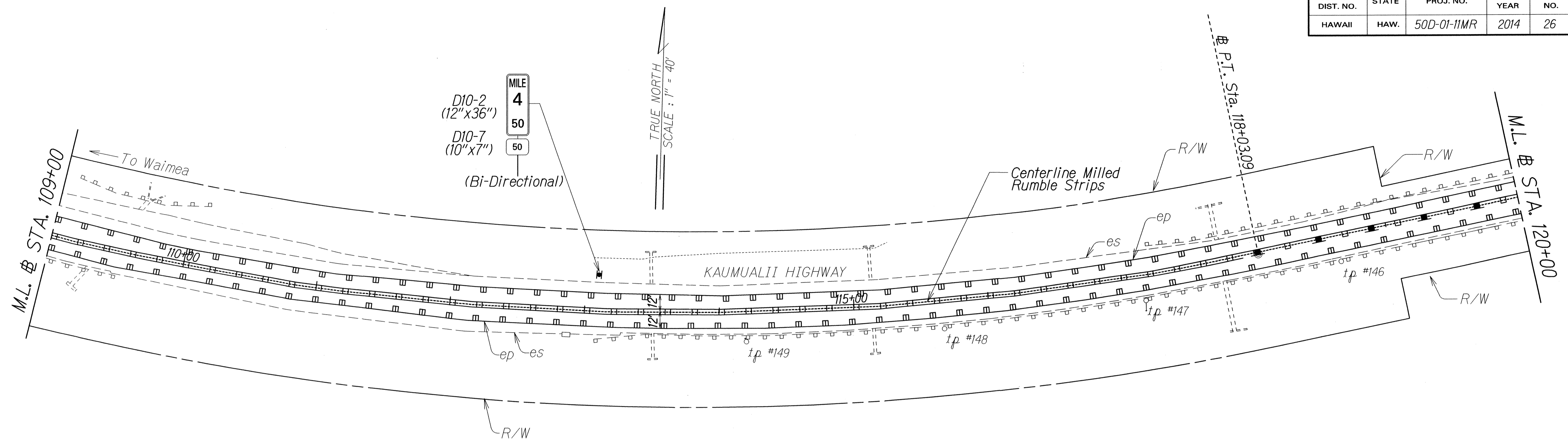
**PAVEMENT MARKING
AND TRAFFIC SIGNING PLAN**

KAUMUALII HIGHWAY RESURFACING
Kipu Road to Huleia Bridge
Proj. No. 50D-01-11MR
Scale: 1"=40' Date: Oct. 2013

SHEET No. T3 OF 9 SHEETS

"AS-BUILT"

FED. ROAD DIST. NO.	STATE	PROJ. NO.	FISCAL YEAR	SHEET NO.	TOTAL SHEETS
HAWAII	HAW.	50D-01-11MR	2014	26	32



DATE	
SURVEY PLOTTED BY	
DRAWN BY	
DESIGNED BY	
CHECKED BY	

STATE OF HAWAII
DEPARTMENT OF TRANSPORTATION
HIGHWAYS DIVISION

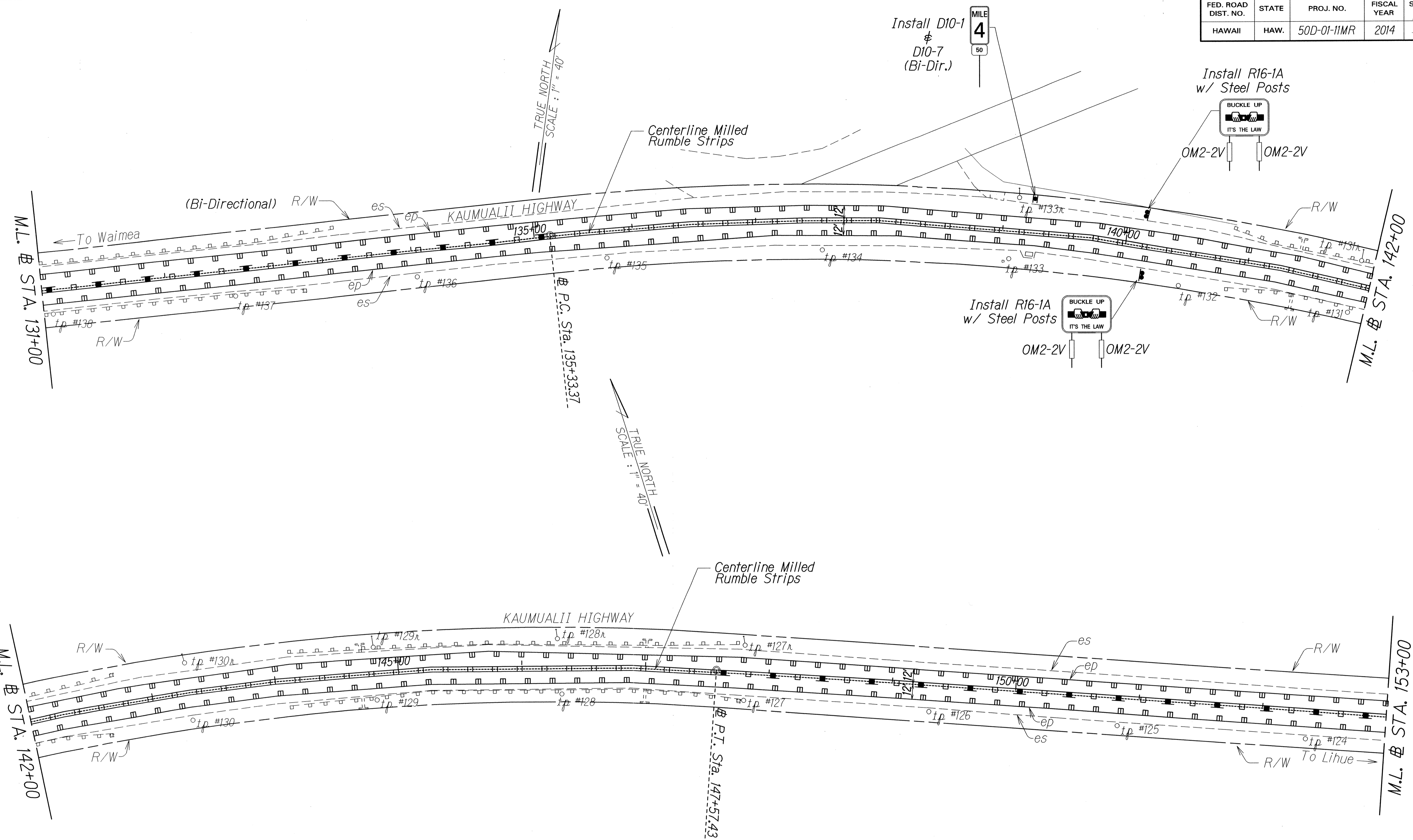
**PAVEMENT MARKING
AND TRAFFIC SIGNING PLAN**

KAUMUALII HIGHWAY RESURFACING
Kipu Road to Huleia Bridge

Proj. No. 50D-01-11MR
Scale: 1" = 40' Date: Oct. 2013

SHEET No. 74 OF 9 SHEETS

FED. ROAD DIST. NO.	STATE	PROJ. NO.	FISCAL YEAR	SHEET NO.	TOTAL SHEETS
HAWAII	HAW.	50D-01-11MR	2014	27	32



DATE	
SURVEY PLOTTED BY	
DRAWN BY	
DESIGNED BY	
CHECKED BY	
ORIGINAL PLAN	
NOTED	
DATE	
CHECKED BY	

STATE OF HAWAII
DEPARTMENT OF TRANSPORTATION
HIGHWAYS DIVISION

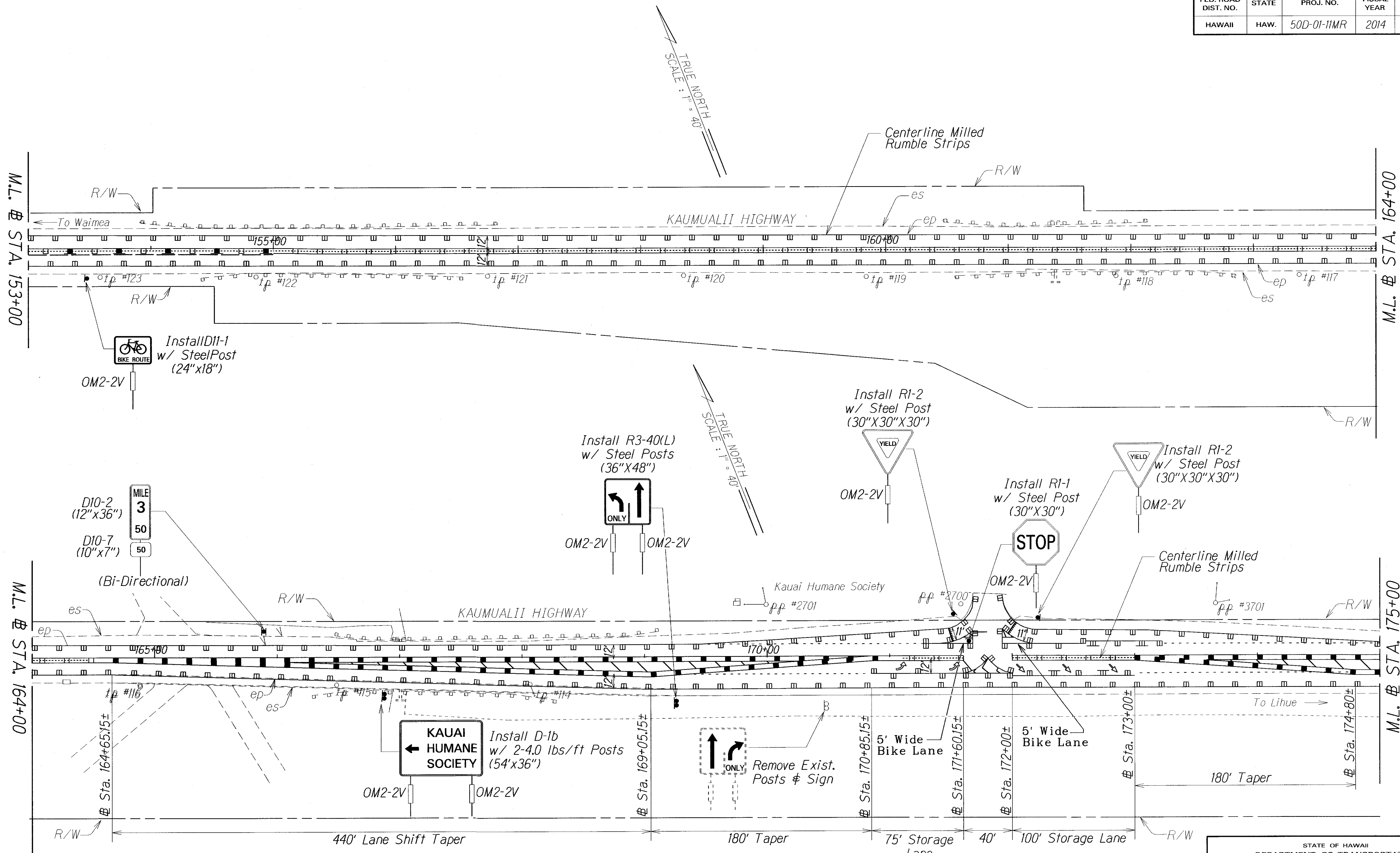
**PAVEMENT MARKING
AND TRAFFIC SIGNING PLAN**

KAUMUALII HIGHWAY RESURFACING
Kipu Road to Huleia Bridge

Proj. No. 50D-01-11MR
Scale: 1" = 40' Date: Oct. 2013

SHEET No. 75 OF 9 SHEETS

FED. ROAD DIST. NO.	STATE	PROJ. NO.	FISCAL YEAR	SHEET NO.	TOTAL SHEETS
HAWAII	HAW.	50D-01-11MR	2014	28	32



SURVEY PLOTTED BY	DATE
DRAWN BY	
TRACED BY	
QUANTITIES BY	
CHECKED BY	
ORIGINAL PLAN	
NOTE BOOK	
DATE	
BY	
NO.	

LEGEND FOR AS-BUILT POSTINGS	
	Squiggly line for as-built deletion
	Double line for as-built deletion
Roadway	Text for as-built posting

STATE OF HAWAII
DEPARTMENT OF TRANSPORTATION
HIGHWAYS DIVISION

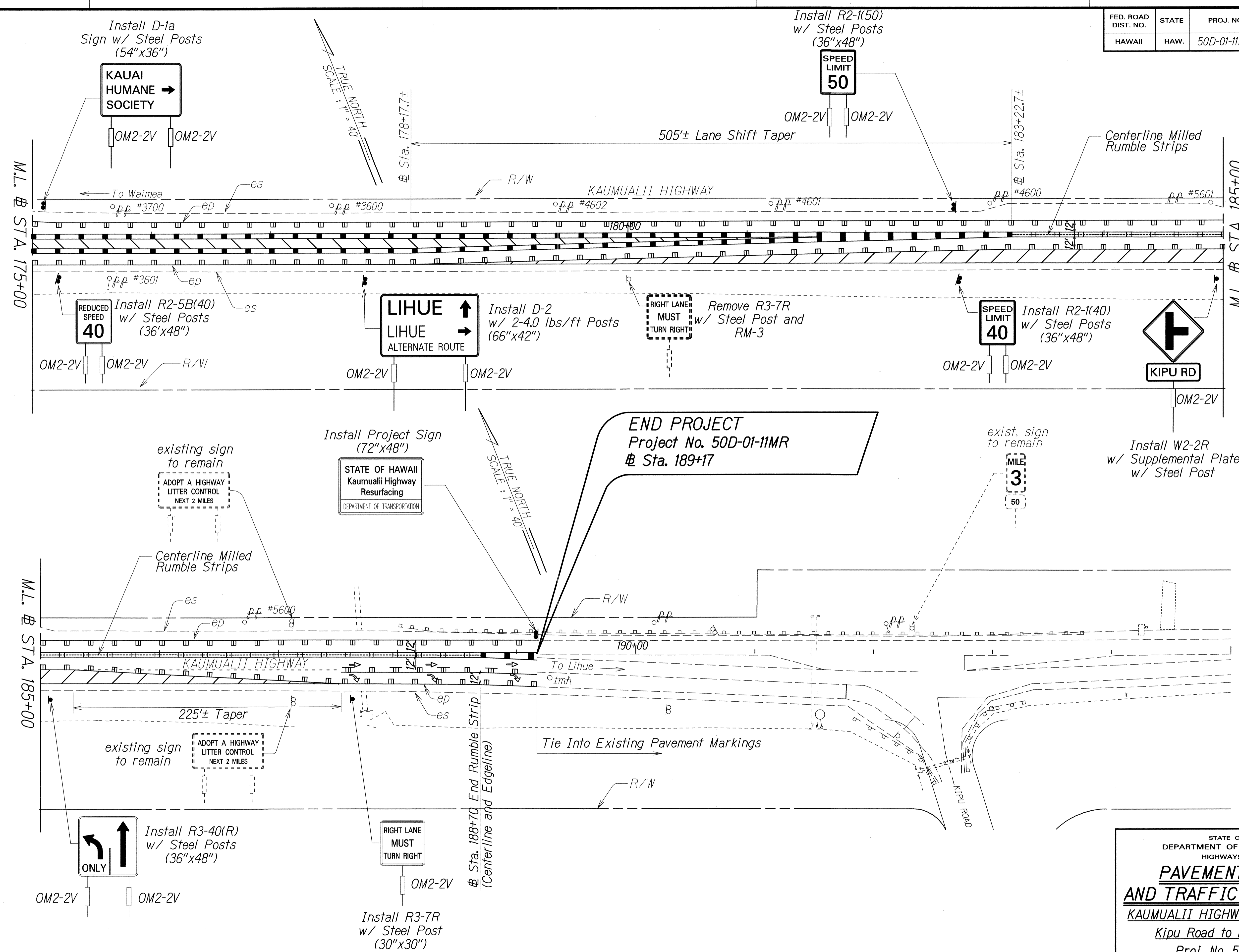
PAVEMENT MARKING AND TRAFFIC SIGNING PLAN

KAUMUALII HIGHWAY RESURFACING
Kipu Road to Huleia Bridge
Proj. No. 50D-01-11MR
Scale: 1"=40' Date: Oct. 2013

SHEET No. T6 OF 9 SHEETS

"AS-BUILT"

FED. ROAD DIST. NO.	STATE	PROJ. NO.	FISCAL YEAR	SHEET NO.	TOTAL SHEETS
HAWAII	HAW.	50D-01-11MR	2014	29	32



SURVEY PLOTTED BY: _____ DATE: _____
 DRAWN BY: _____
 NOTED BY: _____
 DESIGNED BY: _____
 CHECKED BY: _____

STATE OF HAWAII
 DEPARTMENT OF TRANSPORTATION
 HIGHWAYS DIVISION
**PAVEMENT MARKING
 AND TRAFFIC SIGNING PLAN**
 KAUMUALII HIGHWAY RESURFACING
 Kipu Road to Huleia Bridge
 Proj. No. 50D-01-11MR
 Scale: 1"=40' Date: Oct. 2013