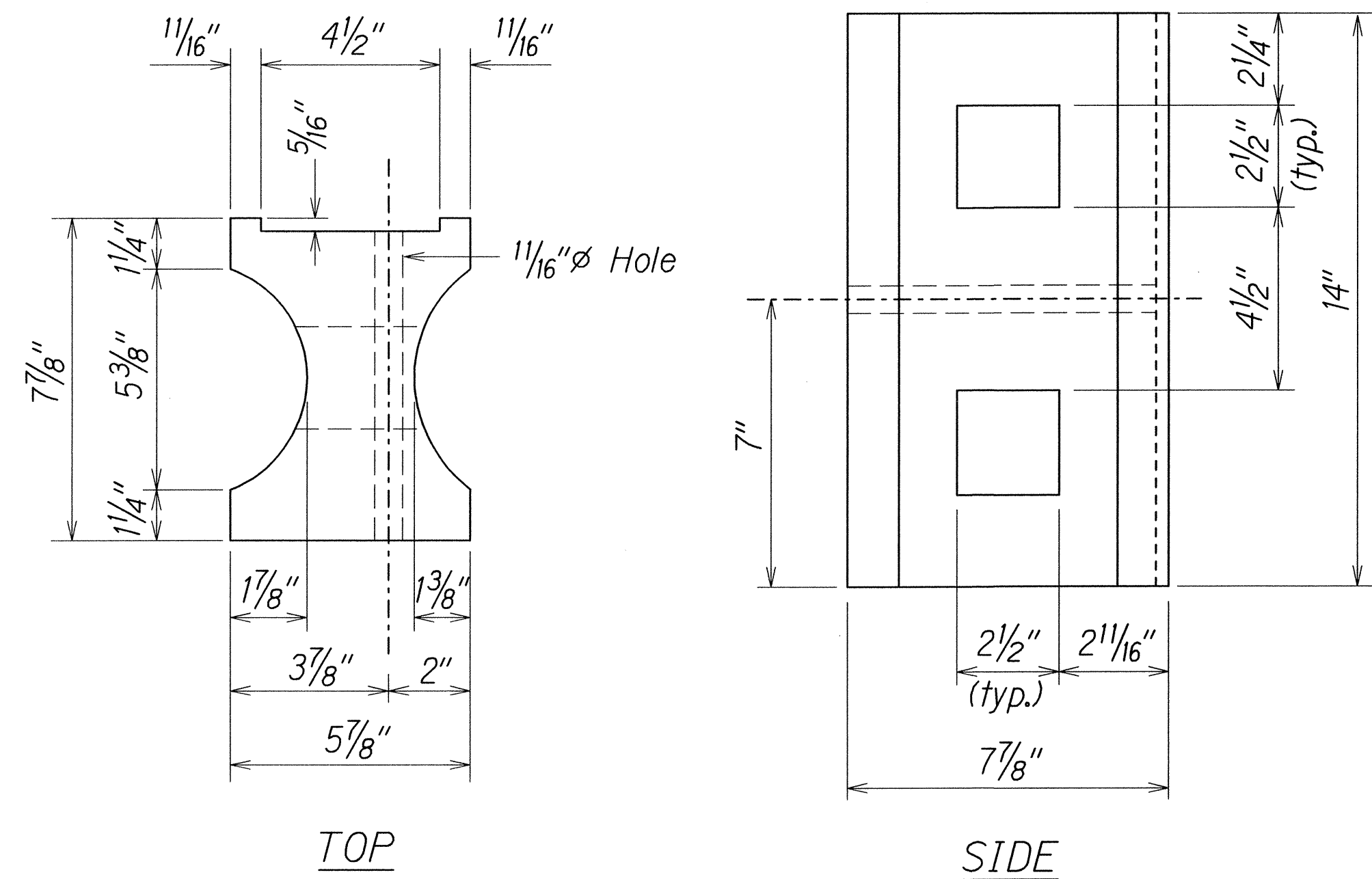
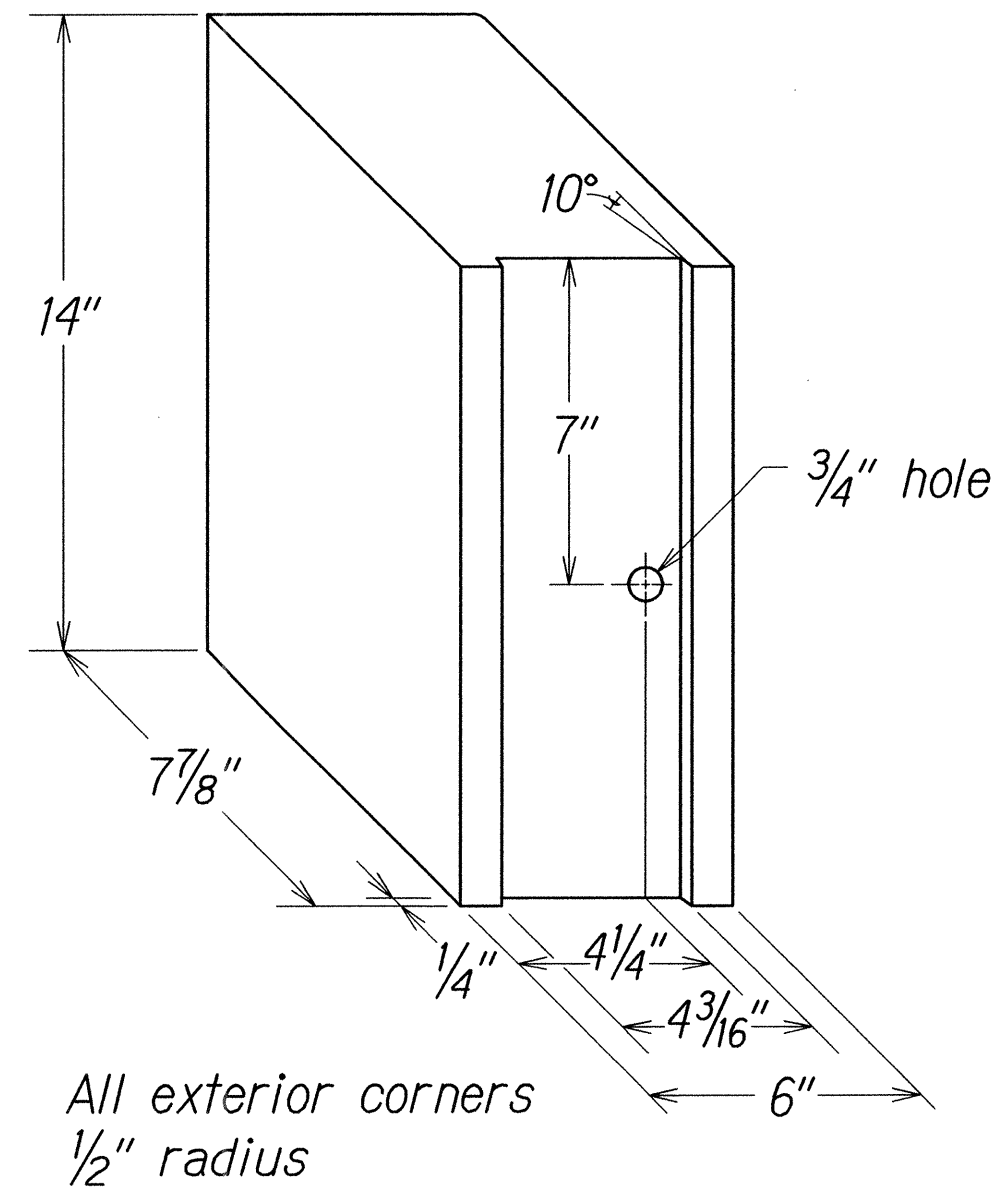


FED. ROAD DIST. NO.	STATE	PROJ. NO.	FISCAL YEAR	SHEET NO.	TOTAL SHEETS
HAWAII	HAW.	50D-01-11MR	2014	13	32



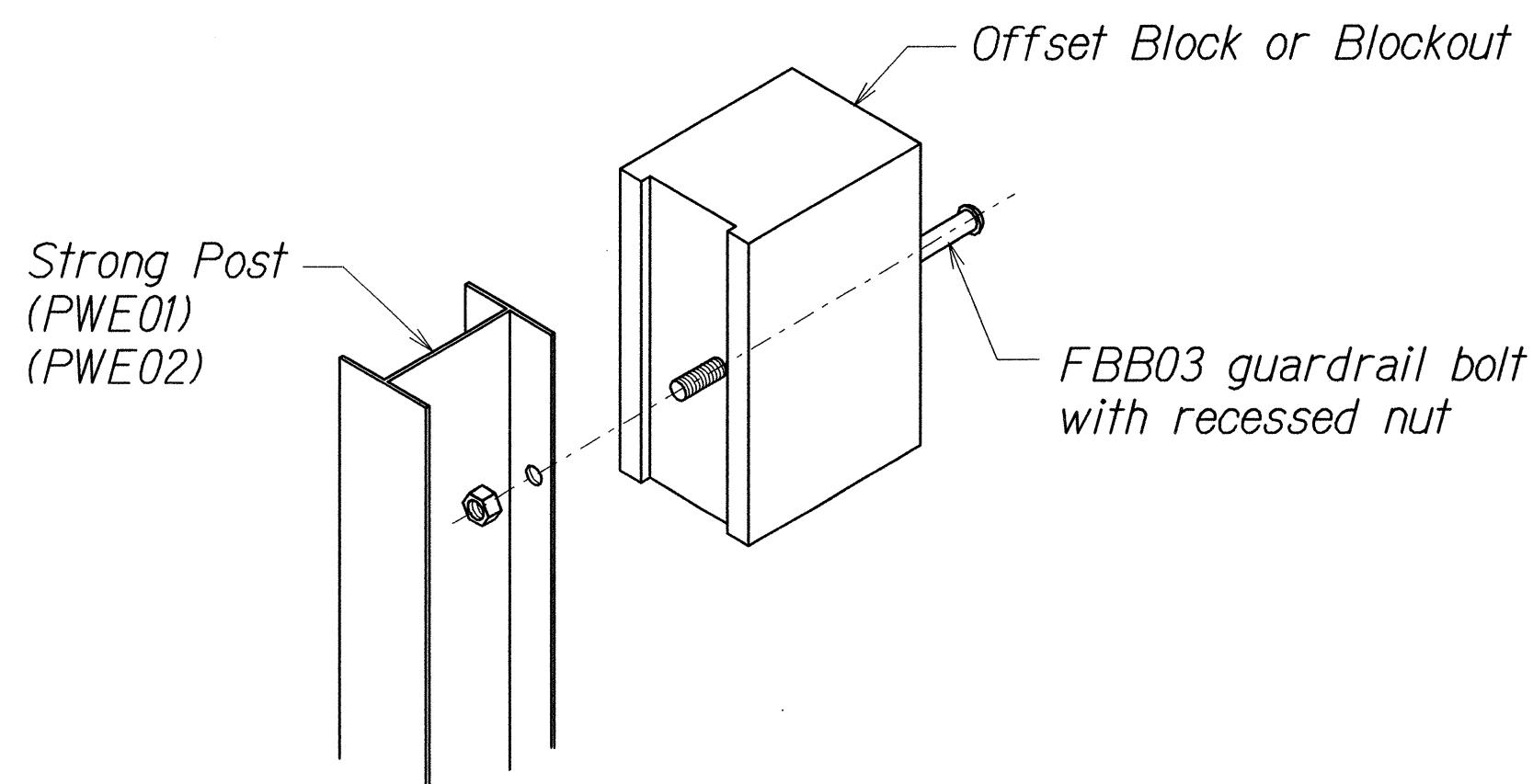
TOP
SIDE
RECYCLED PLASTIC BLOCKOUT (TYPE I)



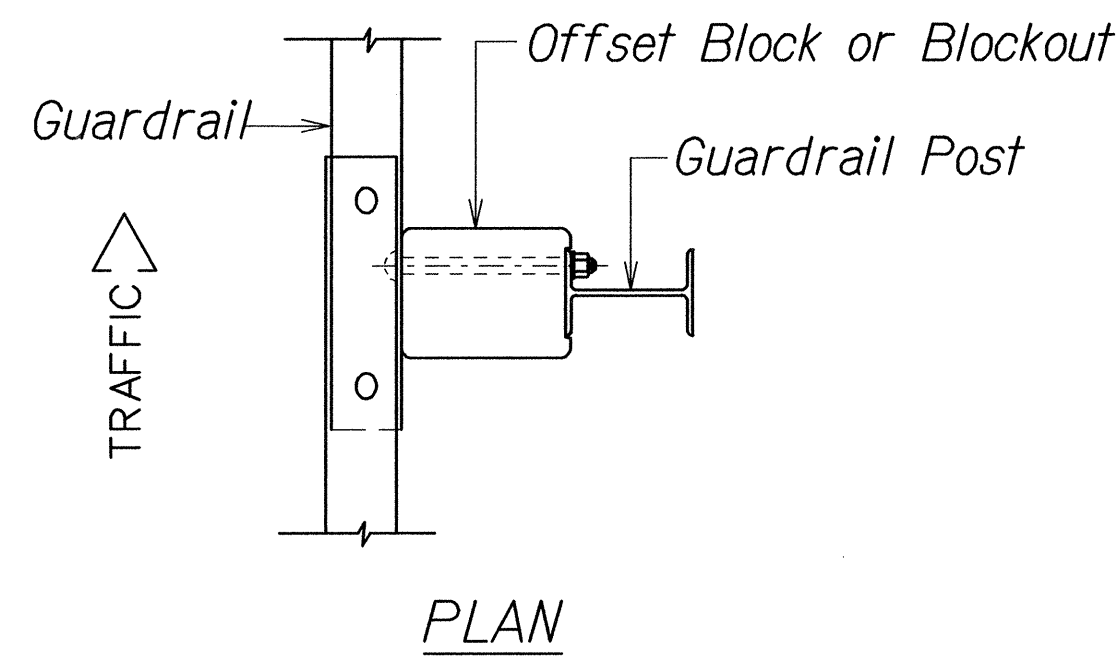
RECYCLED POLYETHYLENE
OFFSET BLOCK (TYPE II)

GENERAL NOTES

1. All hardware, posts and fasteners shall be hot-dip zinc coated galvanized after fabrication. No punching, drilling or cutting will be permitted after galvanizing.
2. Where conditions require, special post lengths in increments of 6 inches may be specified.
3. All fasteners, posts, and rail elements (i.e. FBB03, PWE01, RWM02b, etc.) shall conform to the latest edition and amendments of "A Guide to Standardized Highway Barrier Rail Hardware", a report prepared and approved by the AASHTO-AGC-ARTBA Joint Cooperative Committee, Subcommittee On New Highway Materials, Task Force 13 Report. Dimensions of fastners, posts and rail elements have been converted from metric units into their present form.
4. The Recycled Plastic Block or Offset Block shall be approved by the State.
5. Reflector Markers (RM-5) mounted on guardrails shall be spaced every 25 feet. RM-5's shall not be installed on Terminal Sections. Furnishing and installing of each RM-5 shall be considered incidental to the adjacent guardrail system. RM-5 shall be either galvanized steel or plastic.

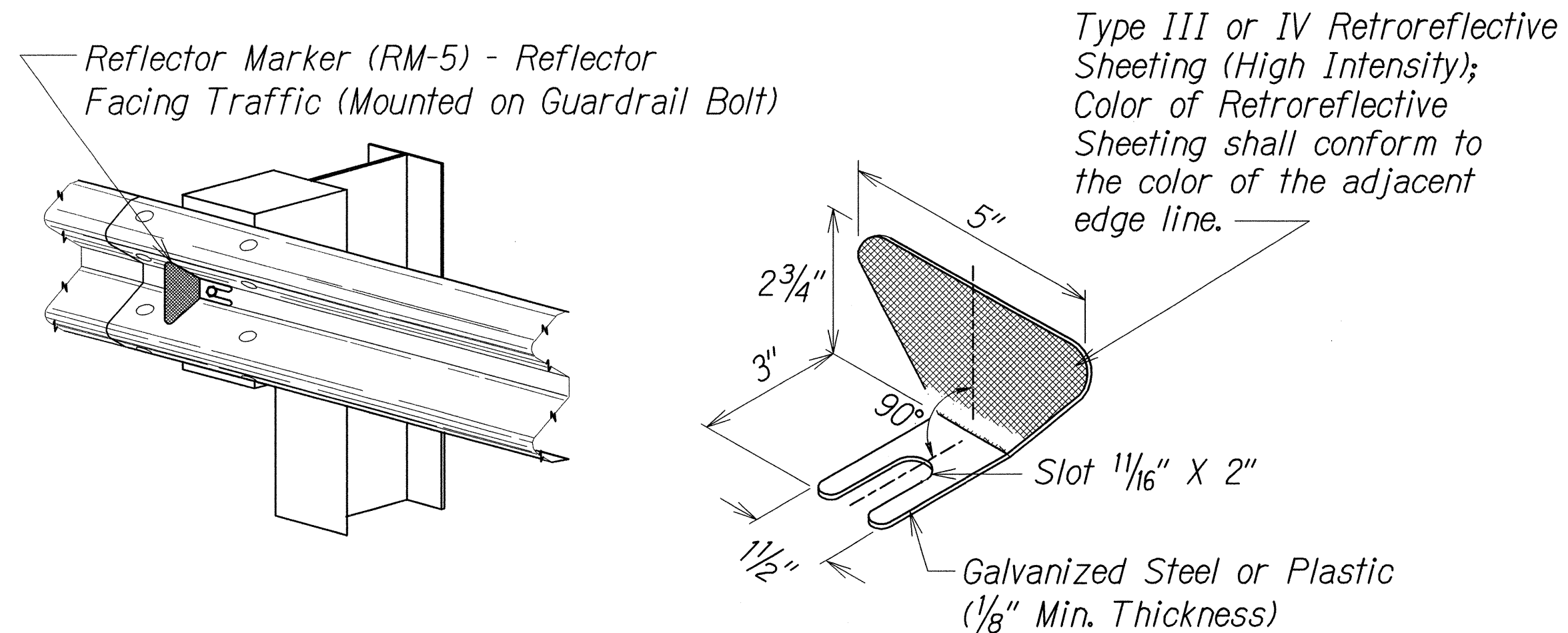


Exploded View
(Rail and washer not shown)
STEEL POST AND BLOCK DETAIL

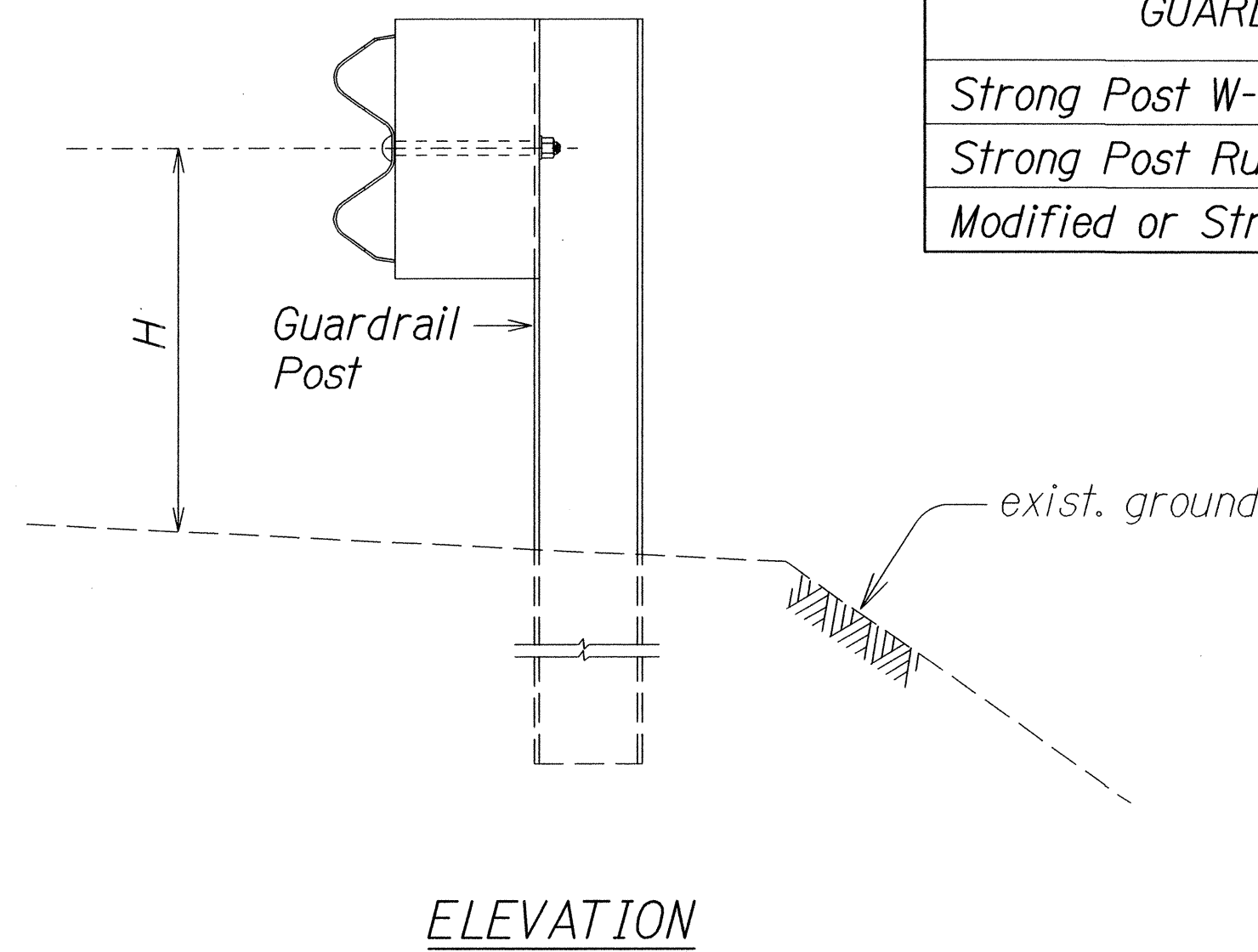


PLAN

GUARDRAIL TYPE	DIMENSION	
	H	A
Strong Post W-Beam	1'-9 5/8"	1'-6"
Strong Post Rubrail (W-Beam)	2'-0"	1'-6"
Modified or Strong Post Thrie Beam	2'-0"	2'-0"



REFLECTOR MARKER (RM-5) DETAIL AND TYPICAL INSTALLATION



ELEVATION

TYPICAL GUARDRAIL INSTALLATION

STATE OF HAWAII
DEPARTMENT OF TRANSPORTATION
HIGHWAYS DIVISION

GUARDRAIL DETAILS & NOTES

KAUMUALII HIGHWAY RESURFACING
Kipu Road to Huleia Bridge
Proj. No. 50D-01-11MR

Scale: Not to Scale Date: Oct. 2013
SHEET No. 1 OF 3 SHEETS

ORIGINAL PLAN	DATE
SURVEY PLOTTED BY	
DESIGNED BY	
TRACED BY	
NOTED BY	
QUANTITIES BY	
CHECKED BY	