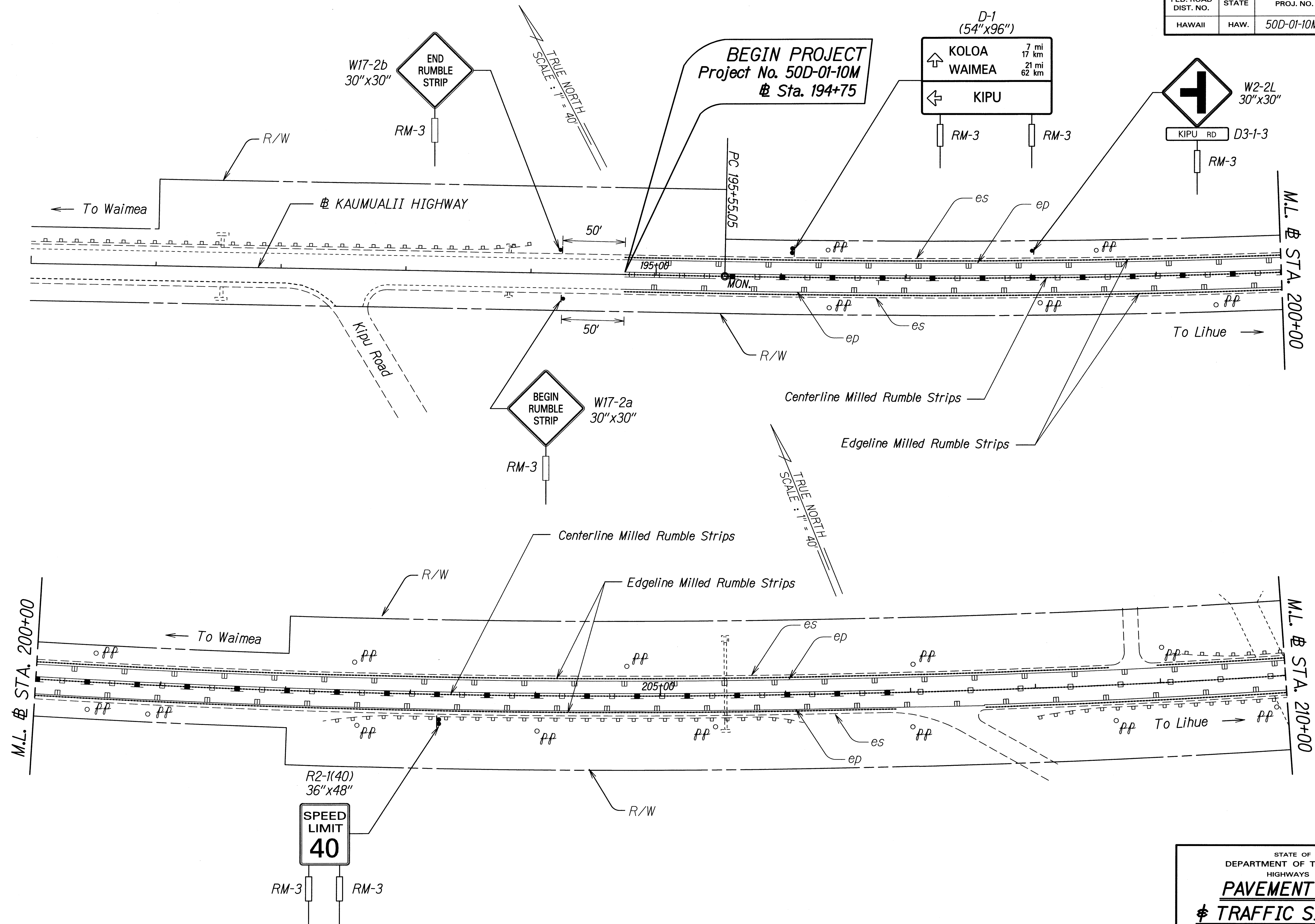


FED. ROAD DIST. NO.	STATE	PROJ. NO.	FISCAL YEAR	SHEET NO.	TOTAL SHEETS
HAWAII	HAW.	50D-01-10M	2010	16	19



ORIGINAL PLAN	DATE
SURVEY PLOTTED BY	3/2/03
TRACED BY	
DESIGNED BY	
QUANTITIES BY	
CHECKED BY	
N.	

STATE OF HAWAII
DEPARTMENT OF TRANSPORTATION
HIGHWAYS DIVISION

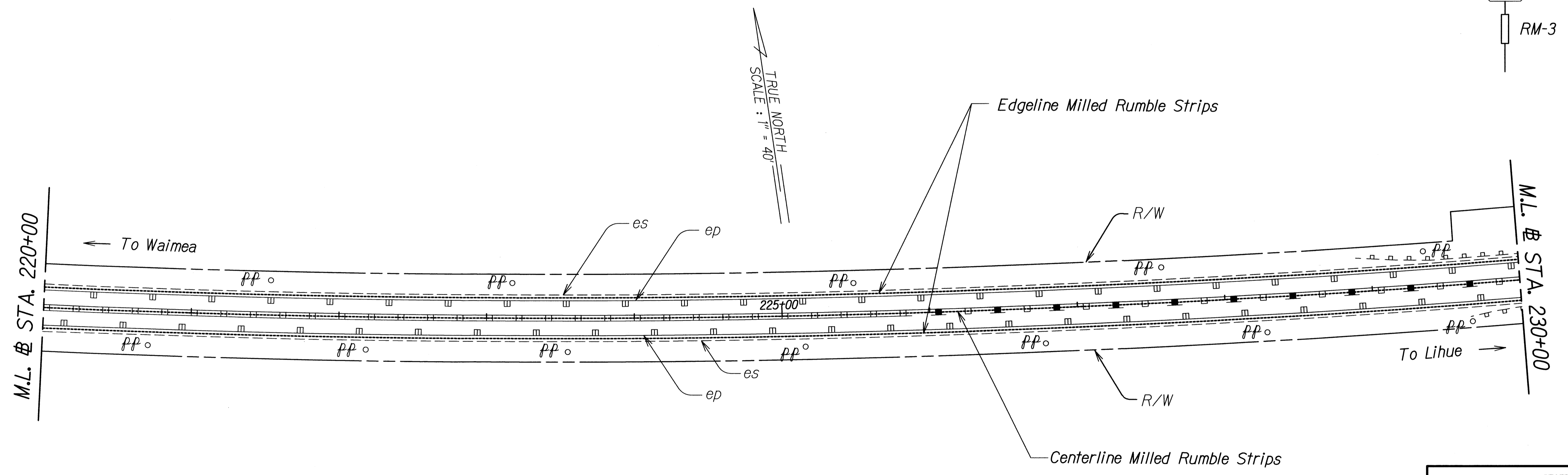
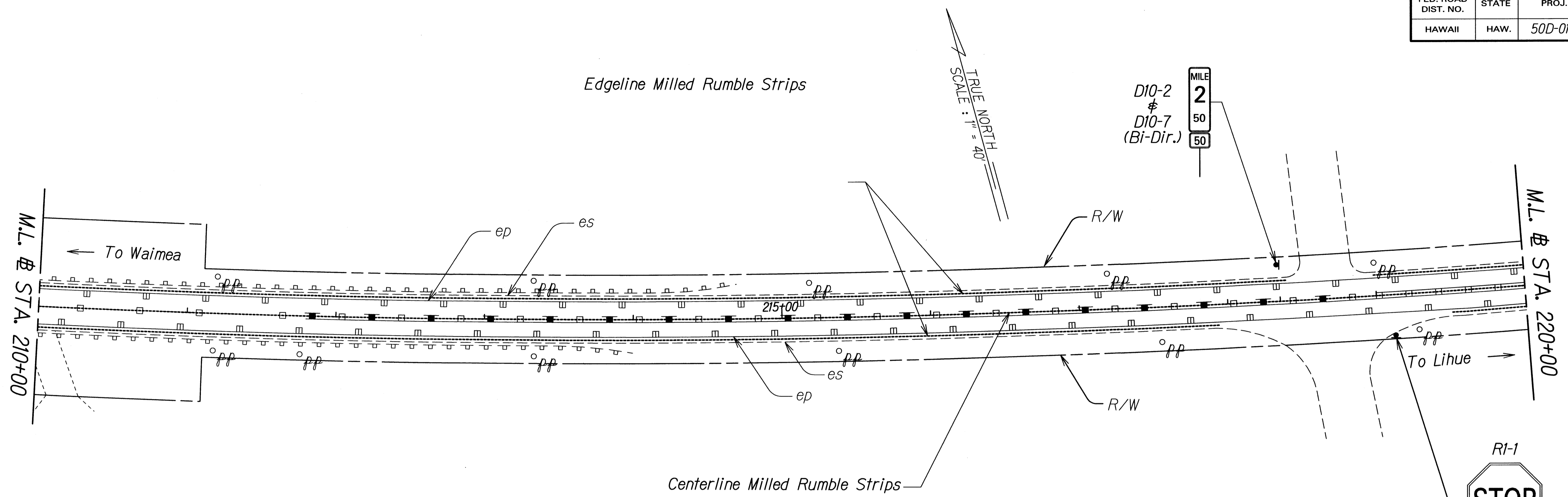
PAVEMENT MARKING
TRAFFIC SIGNING PLAN

KAUMUALII HIGHWAY RESURFACING
Vicinity of Kipu Road To Anonui Street
Project No. 50D-01-10M

Scale: 1" = 40' Date: Feb. 2010

SHEET No. 75 OF 8 SHEETS

FED. ROAD DIST. NO.	STATE	PROJ. NO.	FISCAL YEAR	SHEET NO.	TOTAL SHEETS
HAWAII	HAW.	50D-01-10M	2010	17	19



DATE	2/2/10
SURVEY PLOTTED BY	
DESIGNED BY	
QUANTITIES BY	
CHECKED BY	
ORIGINAL PLAN	
NOTE BOOK	
No.	

STATE OF HAWAII
DEPARTMENT OF TRANSPORTATION
HIGHWAYS DIVISION

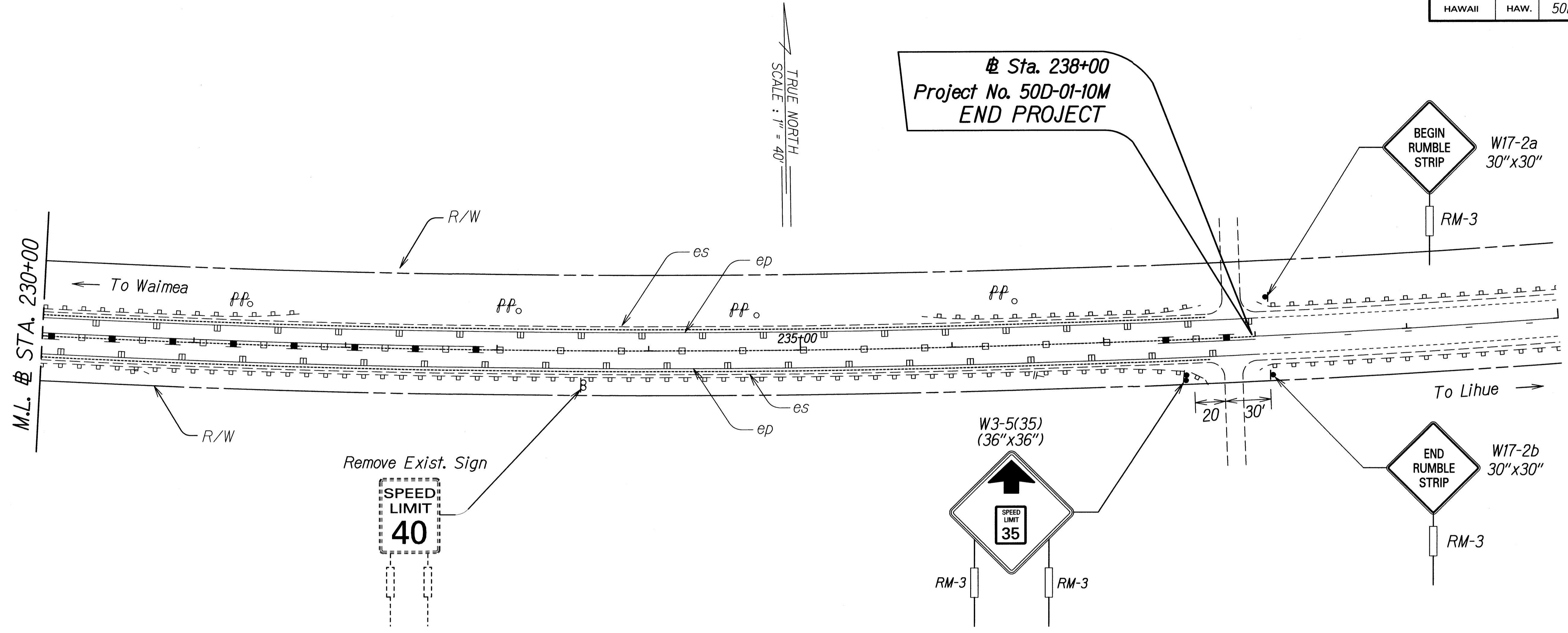
PAVEMENT MARKING
TRAFFIC SIGNING PLAN

KAUMUALII HIGHWAY RESURFACING
Vicinity of Kipu Road To Anonui Street
Project No. 50D-01-10M

Scale: 1" = 40' Date: Feb. 2010

SHEET No. T6 OF 8 SHEETS

FED. ROAD DIST. NO.	STATE	PROJ. NO.	FISCAL YEAR	SHEET NO.	TOTAL SHEETS
HAWAII	HAW.	50D-01-10M	2010	18	19



ORIGINAL PLAN	DATE
DESIGNED BY	3/7/09
TRACED BY	
DESIGNED BY	
QUANTITIES BY	
CHECKED BY	

STATE OF HAWAII
DEPARTMENT OF TRANSPORTATION
HIGHWAYS DIVISION

PAVEMENT MARKING
⊕ TRAFFIC SIGNING PLAN

KAUMUALII HIGHWAY RESURFACING
Vicinity of Kipu Road To Anonui Street
Project No. 50D-01-10M

Scale: 1" = 40' Date: Feb. 2010

SHEET No. 17 OF 8 SHEETS