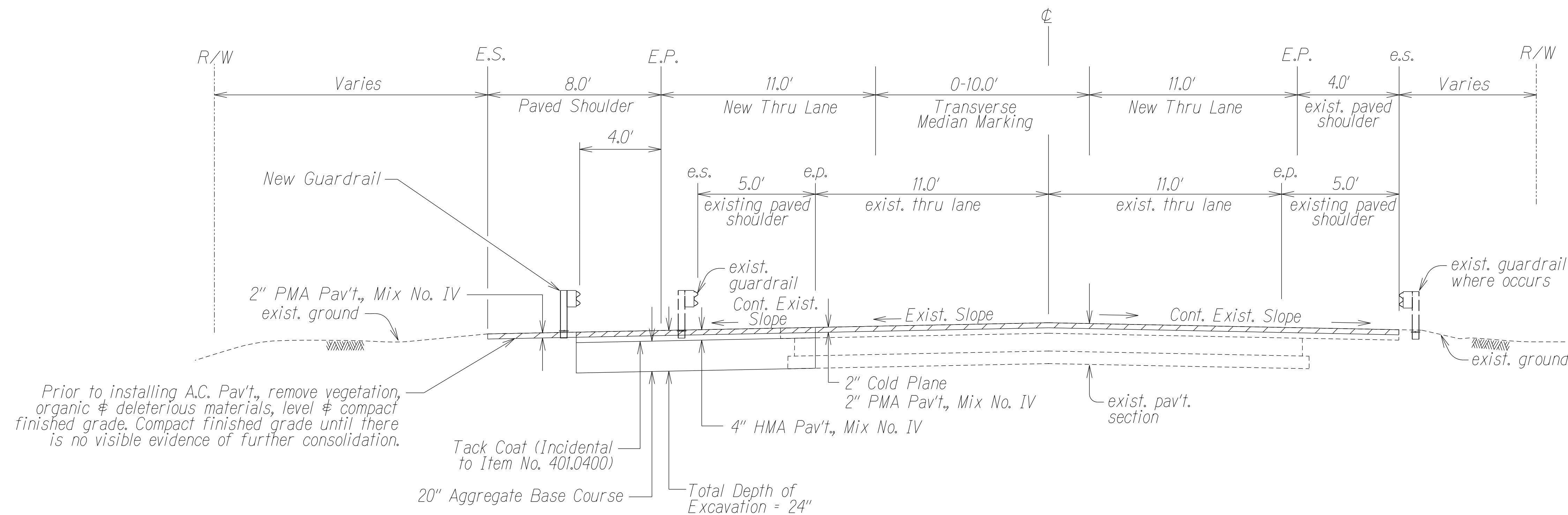
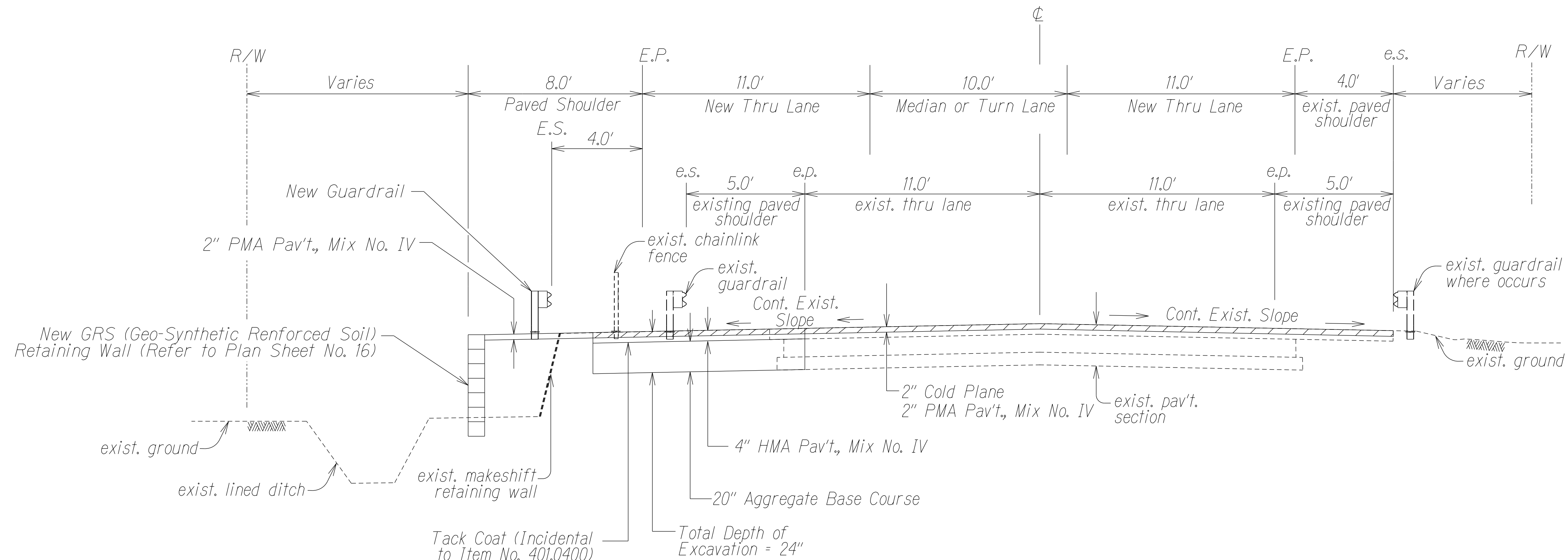


FED. ROAD DIST. NO.	STATE	PROJ. NO.	FISCAL YEAR	SHEET NO.	TOTAL SHEETS
HAWAII	HAW.	50C-01-18	2022	8	30



TYPICAL SECTION FROM \pm STA. 33+91.17 \pm TO \pm STA 36+70 \pm
Not to Scale



TYPICAL SECTION FROM \pm STA. 36+70 \pm TO \pm STA 38+38 \pm
Not to Scale

SURVEY PLOTTED BY	DATE
DRAWN BY	
DESIGNED BY	
QUANTITIES BY	
CHECKED BY	

ORIGINAL PLAN	NOTE BOOK
DATE	DATE
BY	BY
BY	BY
BY	BY

STATE OF HAWAII
DEPARTMENT OF TRANSPORTATION
HIGHWAYS DIVISION

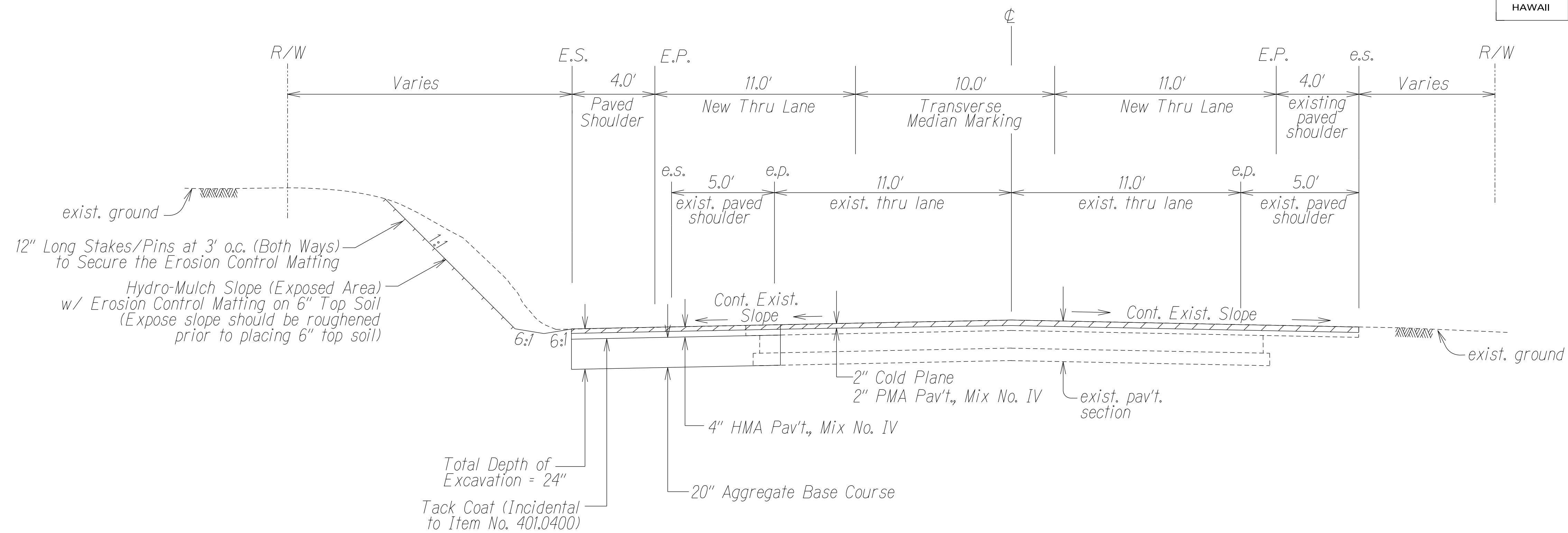
TYPICAL SECTIONS

KAUAI HIGWAY INTERSECTION IMPROVEMENTS
at Laoho Road and Kuli Road
Project No. 50C-01-18

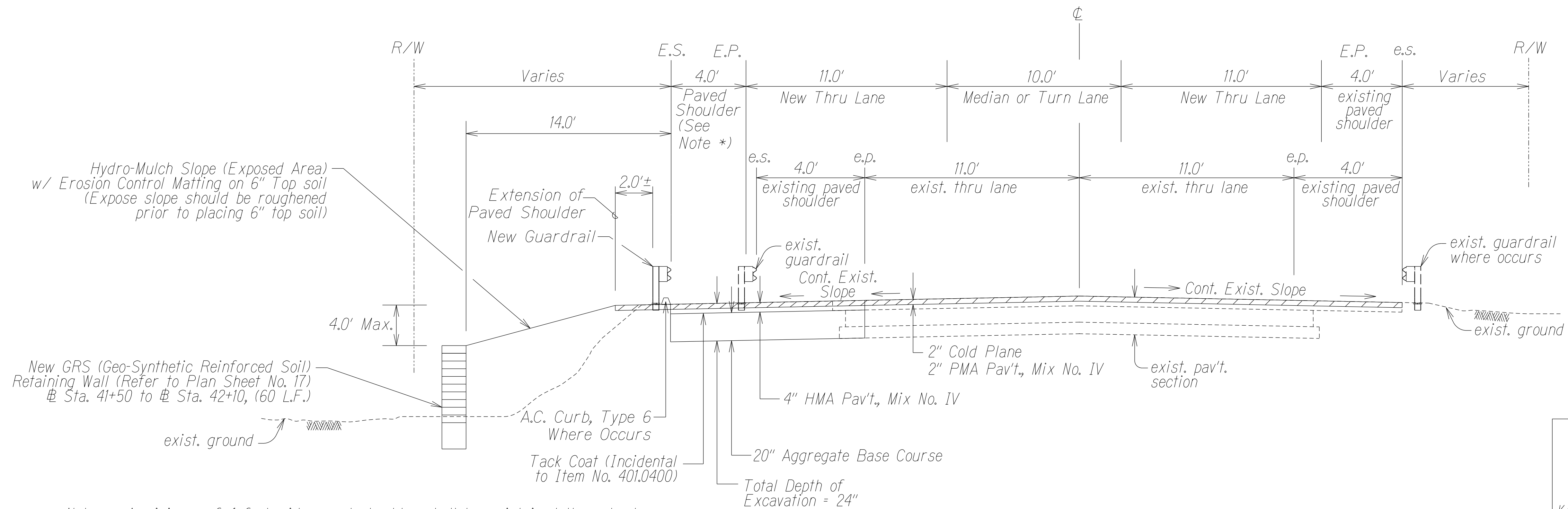
Not to Scale Date: January 2022

SHEET No. 1 OF 3 SHEETS

FED. ROAD DIST. NO.	STATE	PROJ. NO.	FISCAL YEAR	SHEET NO.	TOTAL SHEETS
HAWAII	HAW.	50C-01-18	2022	9	30



TYPICAL SECTION FROM STA. 38+38± TO STA. 40+50±
Not to Scale



TYPICAL SECTION FROM STA. 40+50± TO STA. 43+35±
Not to Scale

Note: * A minimum of 4 feet wide paved shoulder shall be maintained throughout the entire length of the project except at the inbound lane of double barrel box culvert, Sta. 41+24.91. Refer to Plan Sheet. No. 25 - Pavement Marking & Traffic Signing Plan for additional details.

SURVEY PLOTTED BY	DATE
DRAWN BY	
DESIGNED BY	
CHECKED BY	
NOTE BOOK	
QUANTITIES BY	
CHECKED BY	

STATE OF HAWAII
DEPARTMENT OF TRANSPORTATION
HIGHWAYS DIVISION

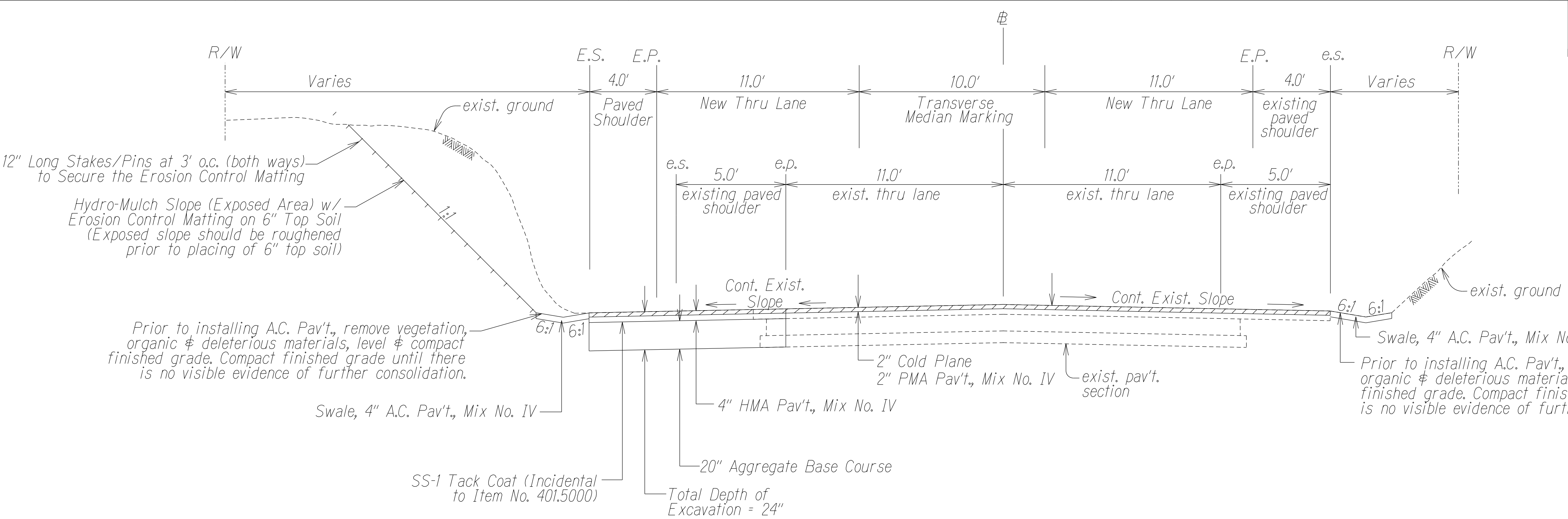
TYPICAL SECTIONS

KAUAI HIGHWAY INTERSECTION IMPROVEMENTS
at Laoh Road and Kuli Road
Project No. 50C-01-18

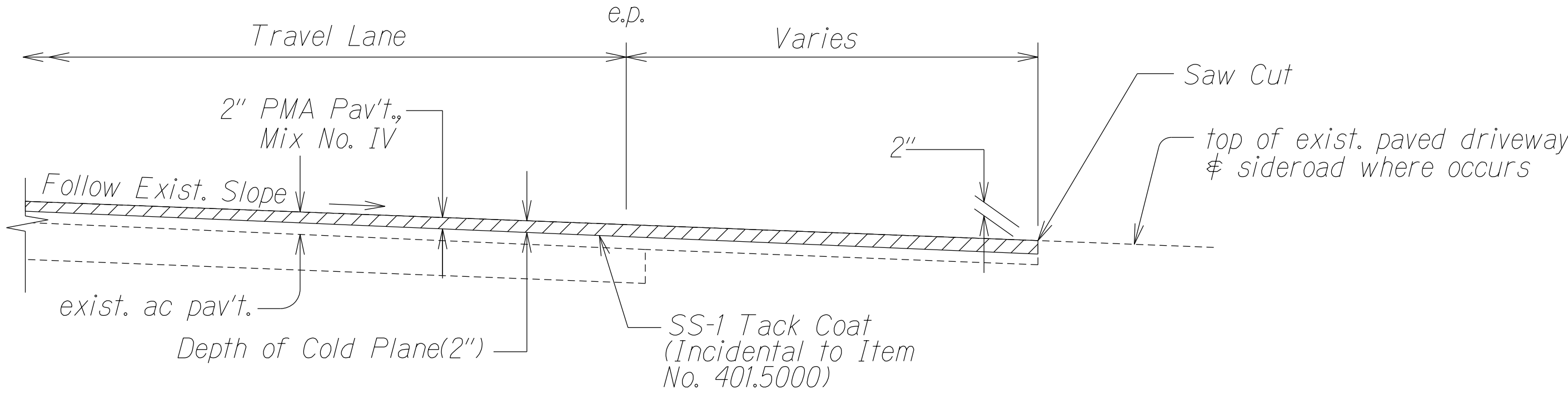
Not to ScaleDate: January 2022

SHEET No. 2 OF 3 SHEETS

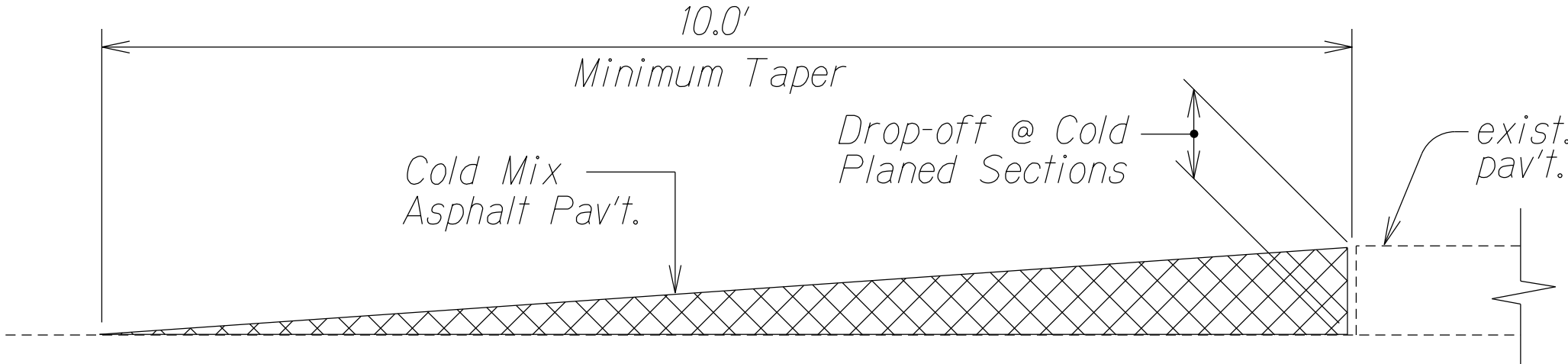
FED. ROAD DIST. NO.	STATE	PROJ. NO.	FISCAL YEAR	SHEET NO.	TOTAL SHEETS
HAWAII	HAW.	50C-01-18	2022	10	30



TYPICAL SECTION FROM STA. 43+35± TO STA. 45+31.63±
Not to Scale

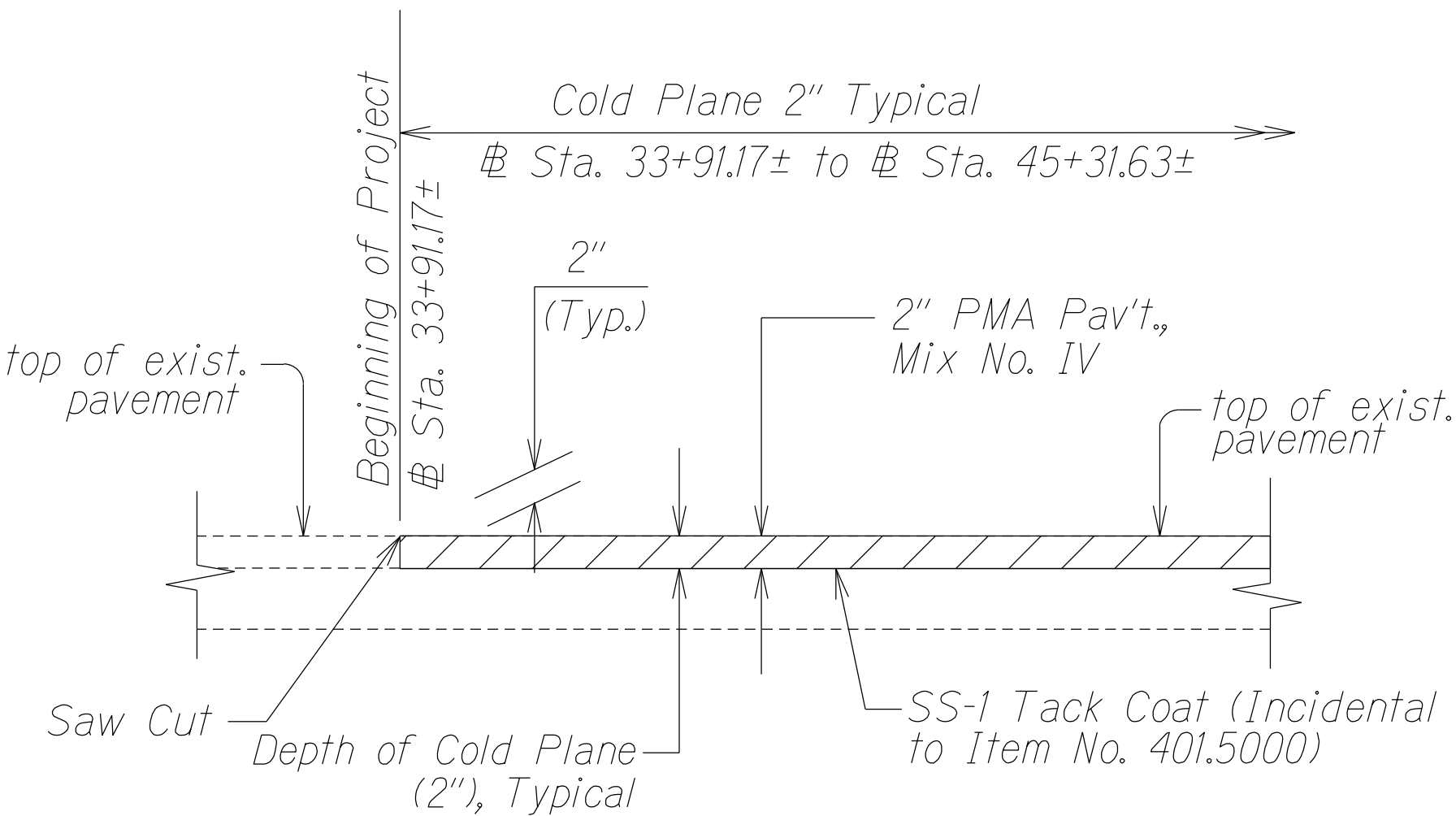


RESURFACING AT PAVED SIDEROADS/DRIVEWAYS
Not to Scale

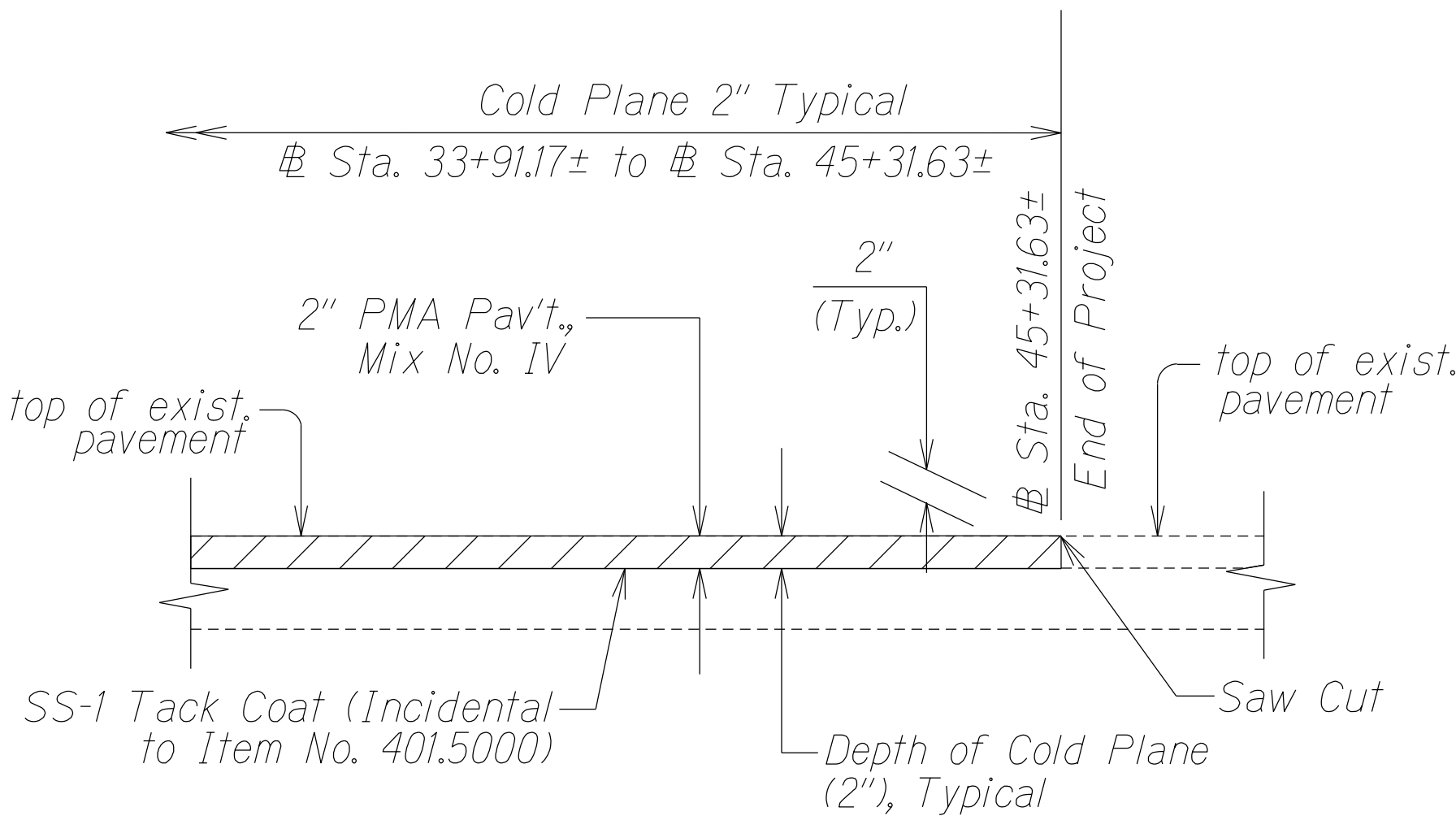


TEMPORARY TRANSITION AT
COLD PLANED AREAS
Not to Scale

Note:
Contractor shall construct temporary pavement taper to prevent sharp pavement drop-offs at all cold planed sections. Prior to final Hot Mix Asphalt Pavement, Mix No. V placement, temporary pavement taper shall be removed.



COLD PLANED TRANSITION TO EXISTING A.C. PAVEMENT AT THE BEGINNING AND END OF PROJECT
Not to Scale



STATE OF HAWAII
DEPARTMENT OF TRANSPORTATION
HIGHWAYS DIVISION

TYPICAL SECTIONS

KAUMUALII HIGHWAY INTERSECTION IMPROVEMENTS
at Laoho Road and Kuli Road
Project No. 50C-01-18

Not to Scale Date: January 2022

SHEET No. 3 OF 3 SHEETS