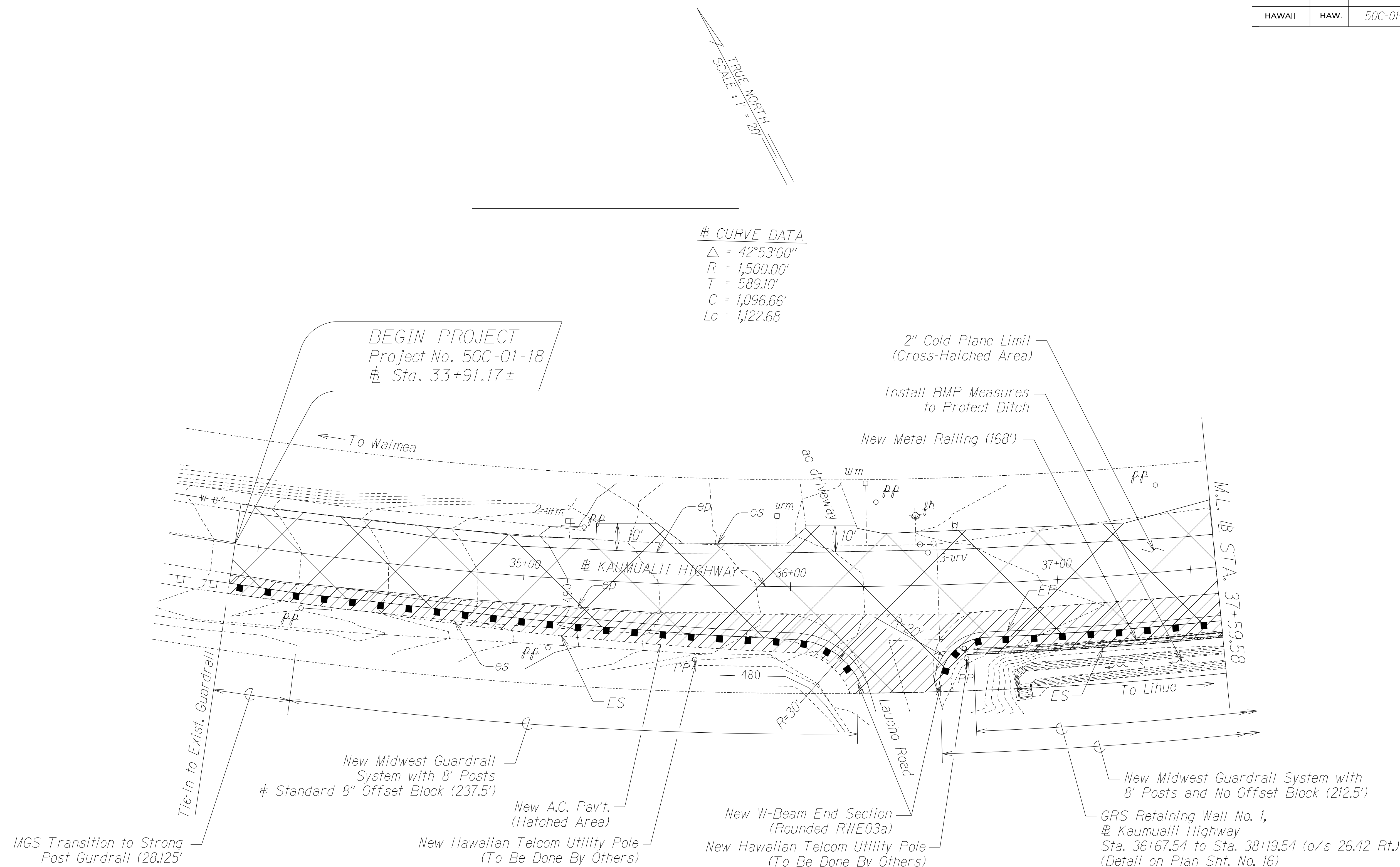


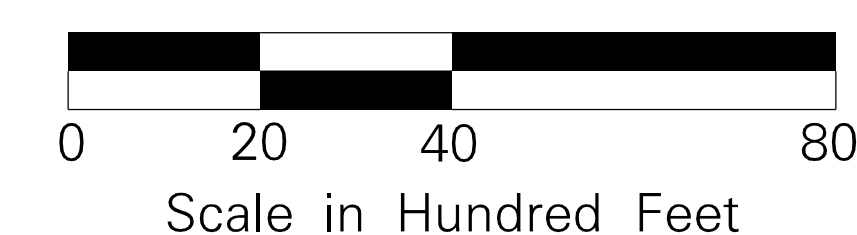
FED. ROAD DIST. NO.	STATE	PROJ. NO.	FISCAL YEAR	SHEET NO.	TOTAL SHEETS
HAWAII	HAW.	50C-01-18	2022	19	30



BMP Note:

1. *Sediment and Erosion Control BMP measures shown in the Contract Documents are minimum BMP's requirements and do not constitute an acceptable and/or complete Sediment Control Plan. The Contractor shall incorporate additional BMP's based upon their means and methods considering site conditions and construction sequence in accordance with the Contract Documents including applicable permit document requirements. Cost shall be included in Pay Item 209.0100 - Installation, Maintenance, Monitoring, and Removal of BMP.*

ORIGINAL PLAN	SURVEY PLOTTED BY _____	DATE _____
	DRAWN BY <i>X</i>	<i>X</i>
NOTE BOOK	TRACED BY _____	_____
<i>kel.pernis</i>	DESIGNED BY <i>X</i>	_____
<i>ckmapod.dgn</i>	QUANTITIES BY _____	_____
	CHECKED BY _____	_____
		No. _____



STATE OF HAWAII
DEPARTMENT OF TRANSPORTATION
HIGHWAYS DIVISION

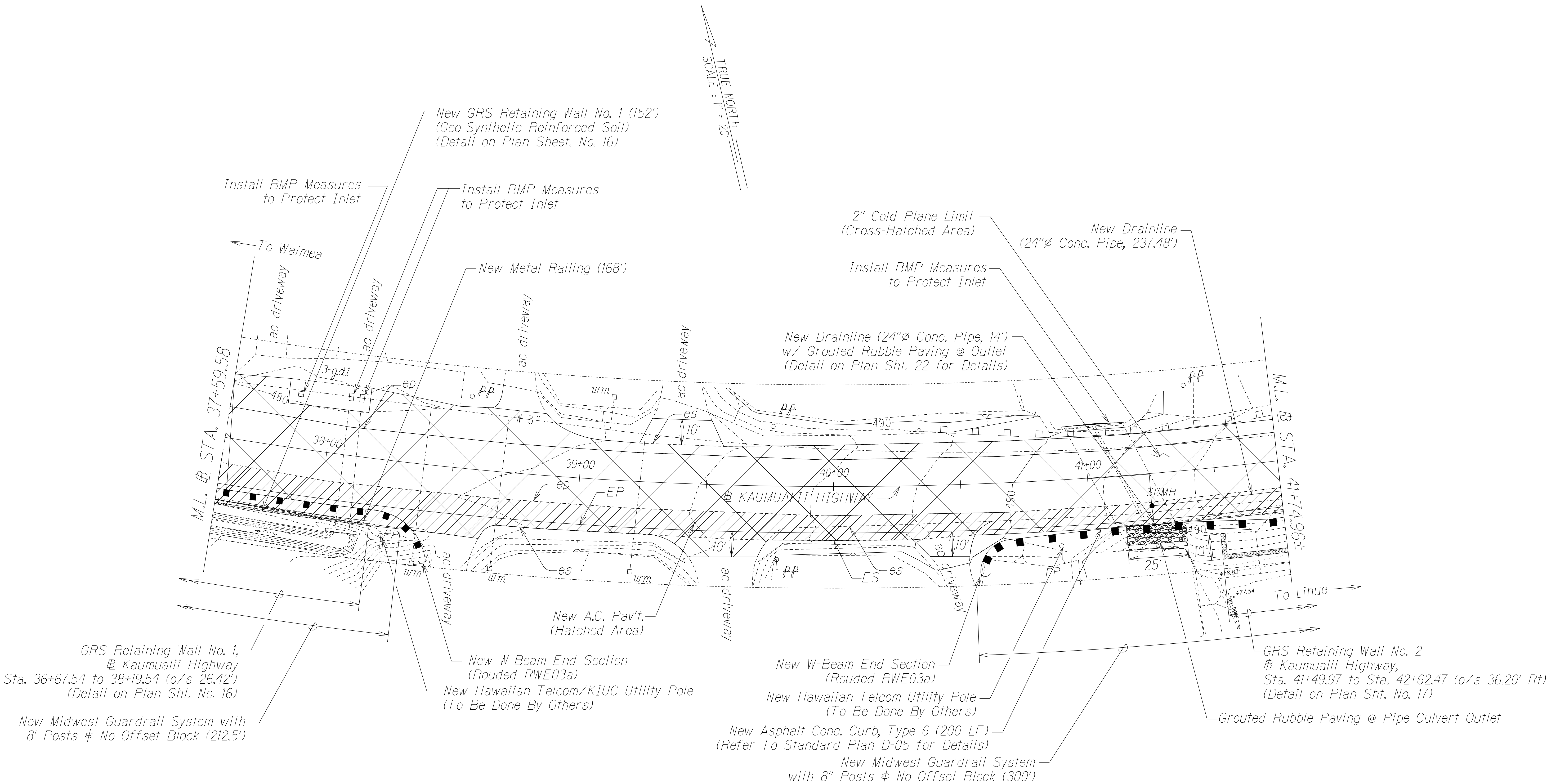
ROADWAY PLAN

KAUMUALII HIGHWAY INTERSECTION IMPROVEMENTS
at Laoho Road and Kuli Road
Project No. 50C-01-18

Scale: 1" = 20' Date: January 2022

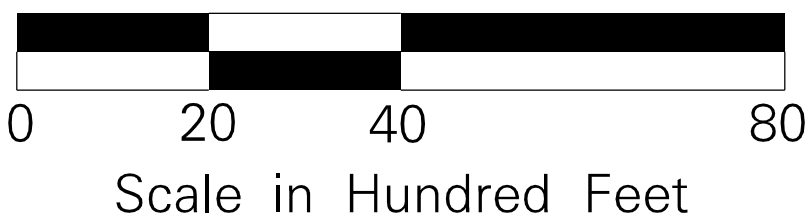
SHEET No. 1 OF 3 SHEETS

FED. ROAD DIST. NO.	STATE	PROJ. NO.	FISCAL YEAR	SHEET NO.	TOTAL SHEETS
HAWAII	HAW.	50C-01-18	2022	20	30



BMP Note:

1. Sediment and Erosion Control BMP measures shown in the Contract Documents are minimum BMP's requirements and do not constitute an acceptable and/or complete Sediment Control Plan. The Contractor shall incorporate additional BMP's based upon their means and methods considering site conditions and construction sequence in accordance with the Contract Documents including applicable permit document requirements. Cost shall be included in Pay Item 209.0100 - Installation, Maintenance, Monitoring, and Removal of BMP.



STATE OF HAWAII
DEPARTMENT OF TRANSPORTATION
HIGHWAYS DIVISION

ROADWAY PLAN

KAUMUALII HIGHWAY INTERSECTION IMPROVEMENTS
at Lauoho Road and Kuli Road
Project No. 50C-01-18

Scale: 1" = 20' Date: January 2022

SHEET No. 2 OF 3 SHEETS

FED. ROAD DIST. NO.	STATE	PROJ. NO.	FISCAL YEAR	SHEET NO.	TOTAL SHEETS
HAWAII	HAW.	50C-01-18	2022	21	30

BMP Note:

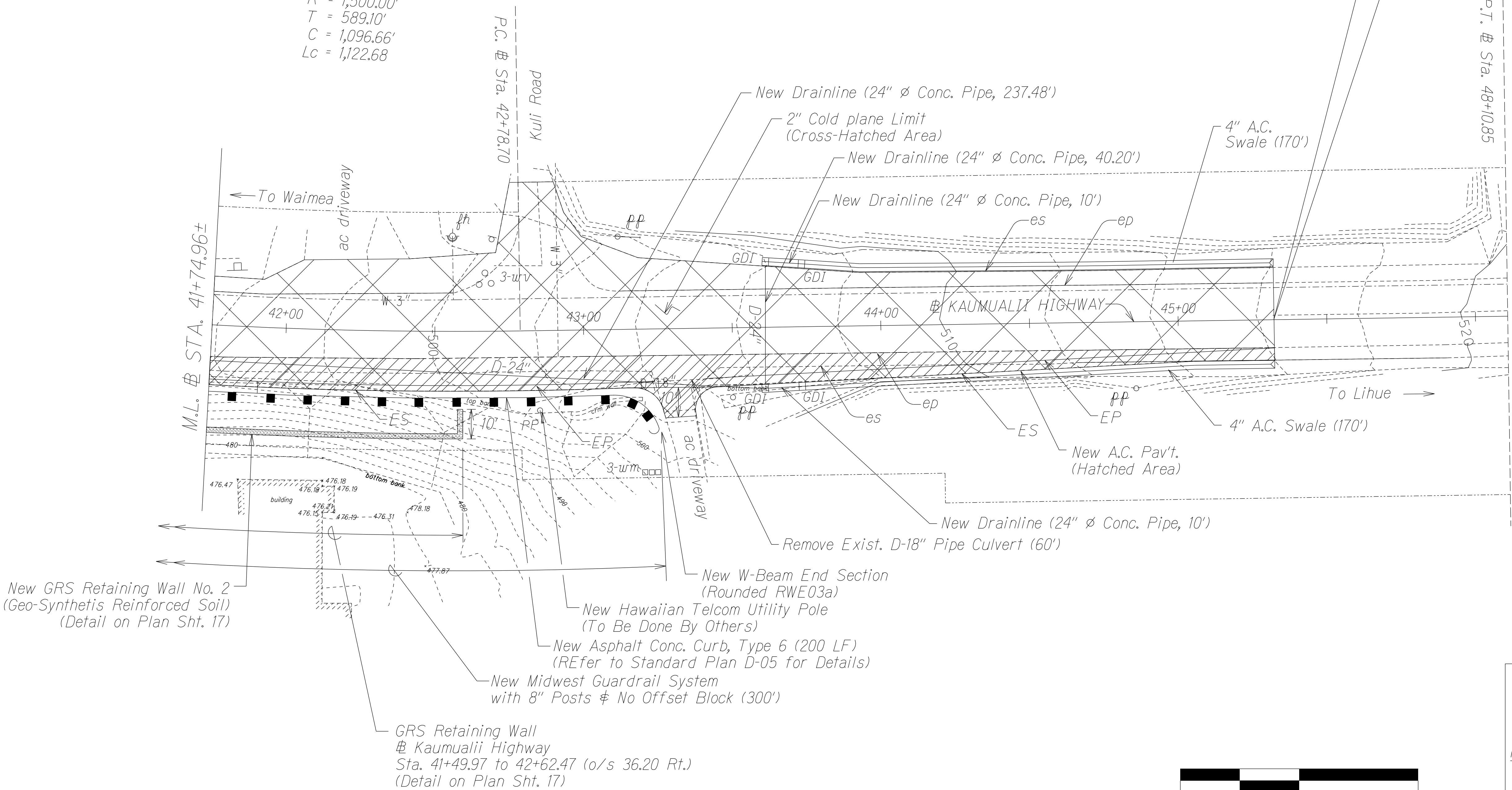
1. Sediment and Erosion Control BMP measures shown in the Contract Documents are minimum BMP's requirements and do not constitute an acceptable and/or complete Sediment Control Plan. The Contractor shall incorporate additional BMP's based upon their means and methods considering site conditions and construction sequence in accordance with the Contract Documents including applicable permit document requirements. Cost shall be included in Pay Item 209.0100 - Installation, Maintenance, Monitoring, and Removal of BMP.

TRUE NORTH
SCALE : 1" = 20'

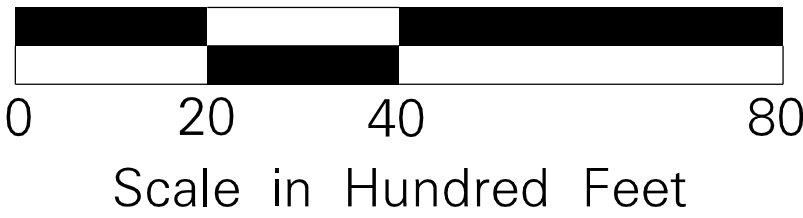
END PROJECT
Project No. 50C-01-18
Sta. 45+31.63±

± CURVE DATA

$\Delta = 42^\circ 53' 00''$
 $R = 1,500.00'$
 $T = 589.10'$
 $C = 1,096.66'$
 $L_c = 1,122.68'$



ORIGINAL PLAN	SURVEY PLOTTED BY	DATE
NOTES	DRAWN BY	X
BOOK	DESIGNED BY	
NO.	QUANTITIES BY	
	CHECKED BY	



STATE OF HAWAII
DEPARTMENT OF TRANSPORTATION
HIGHWAYS DIVISION

ROADWAY PLAN

KAUMUALII HIGHWAY INTERSECTION IMPROVEMENTS

Lauoho Road and Kuli Road

Project No. 50C-01-18

Scale: 1" = 20' Date: January 2022

SHEET No. 3 OF 3 SHEETS