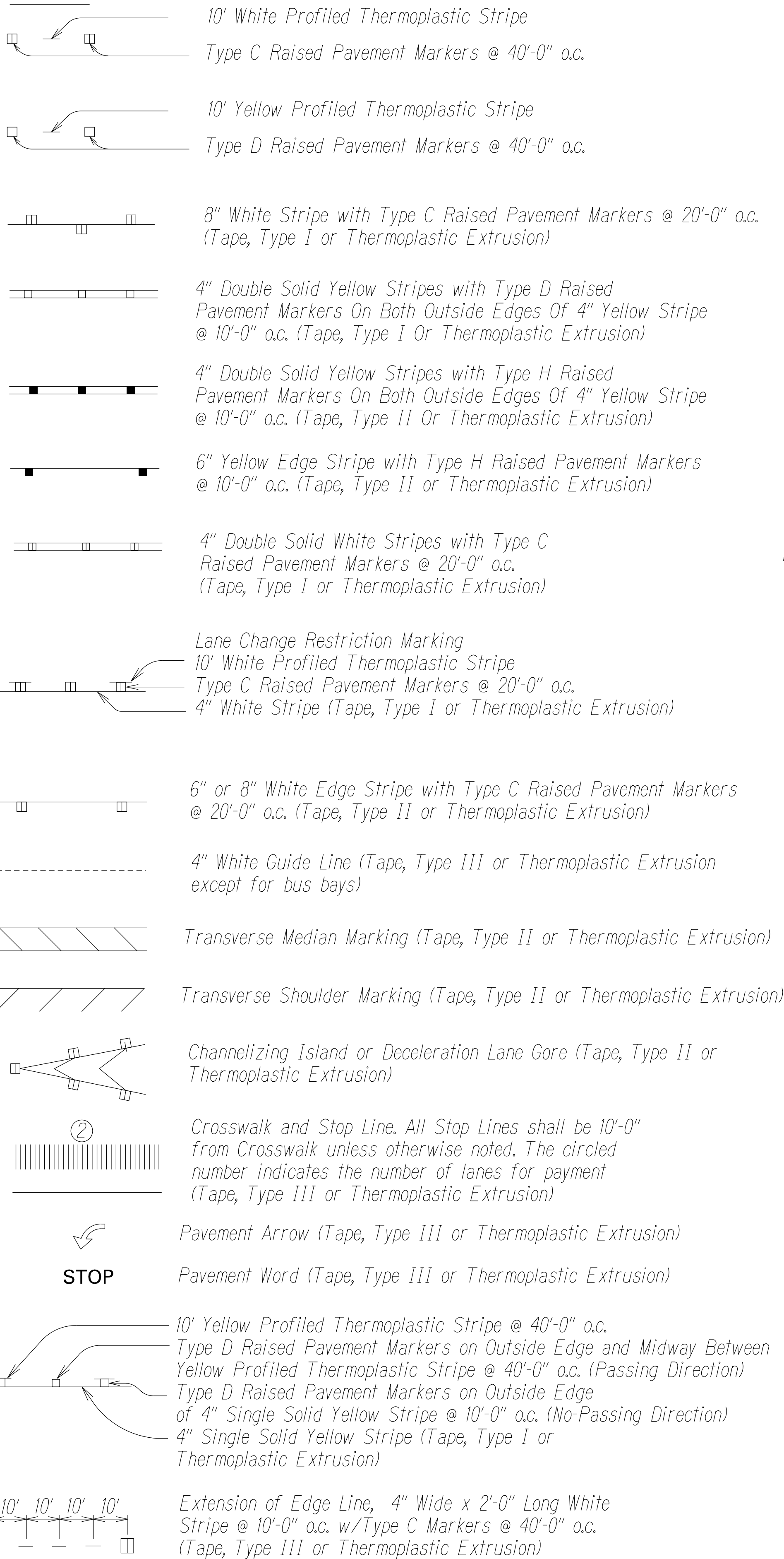
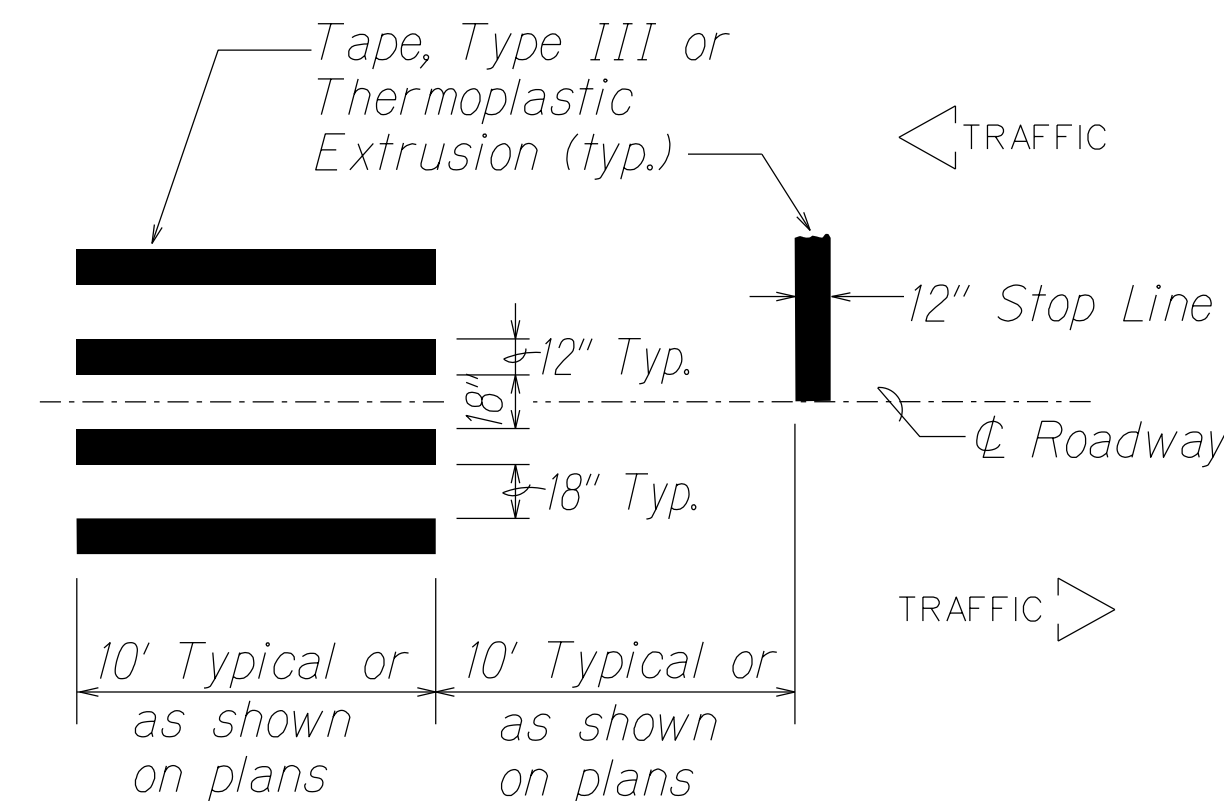


LEGEND



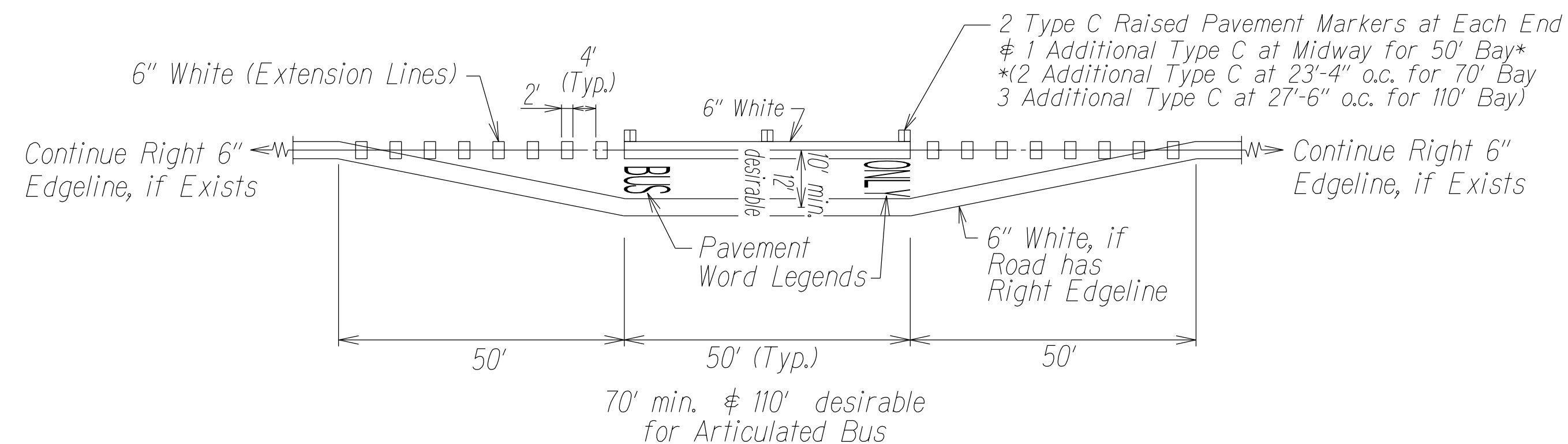
NOTES

- Layout of pavement markings and striping shall be done by the Contractor and approved by the Engineer prior to any installation work.
- Existing pavement markings not incorporated in the final traffic pattern shall be removed as directed by the Engineer. Costs shall be incidental to the various pavement marking items.
- Raised pavement markers shall not be installed within crosswalks.
- Final locations of all signs shall be approved by the Engineer prior to any installation work.
- Existing signs not shown on these plans shall remain as posted unless otherwise directed by the Engineer. Removal and disposal of existing signs and/or posts as designated on these plans shall be incidental to the various signing items.
- Final locations of all Stop Lines shall be approved by the Engineer prior to installation.
- All pavement striping shall be as noted on the legend or plans.
- All preformed pavement marking tapes over existing pavement shall be applied with an approved primer as recommended by the tape manufacturer and as approved by the Engineer. The primer shall be allowed to dry to the tacky stage prior to tape application.
- All pedestrian warning signs with supplemental sign shall be on a fluorescent yellow-green retroreflective background with a black legend or border.
- Object marker (OM-5) shall be Vis-Z-Shield manufactured by Zumar or approved equal.
- Background of objecr marker shall be retroreflectorized with Type XI Retroreflective sheeting.
- The color of the object marker (retroreflective sheeting) shall be red for "STOP" and "YIELD" signs, others shall be yellow retroreflective sheeting.

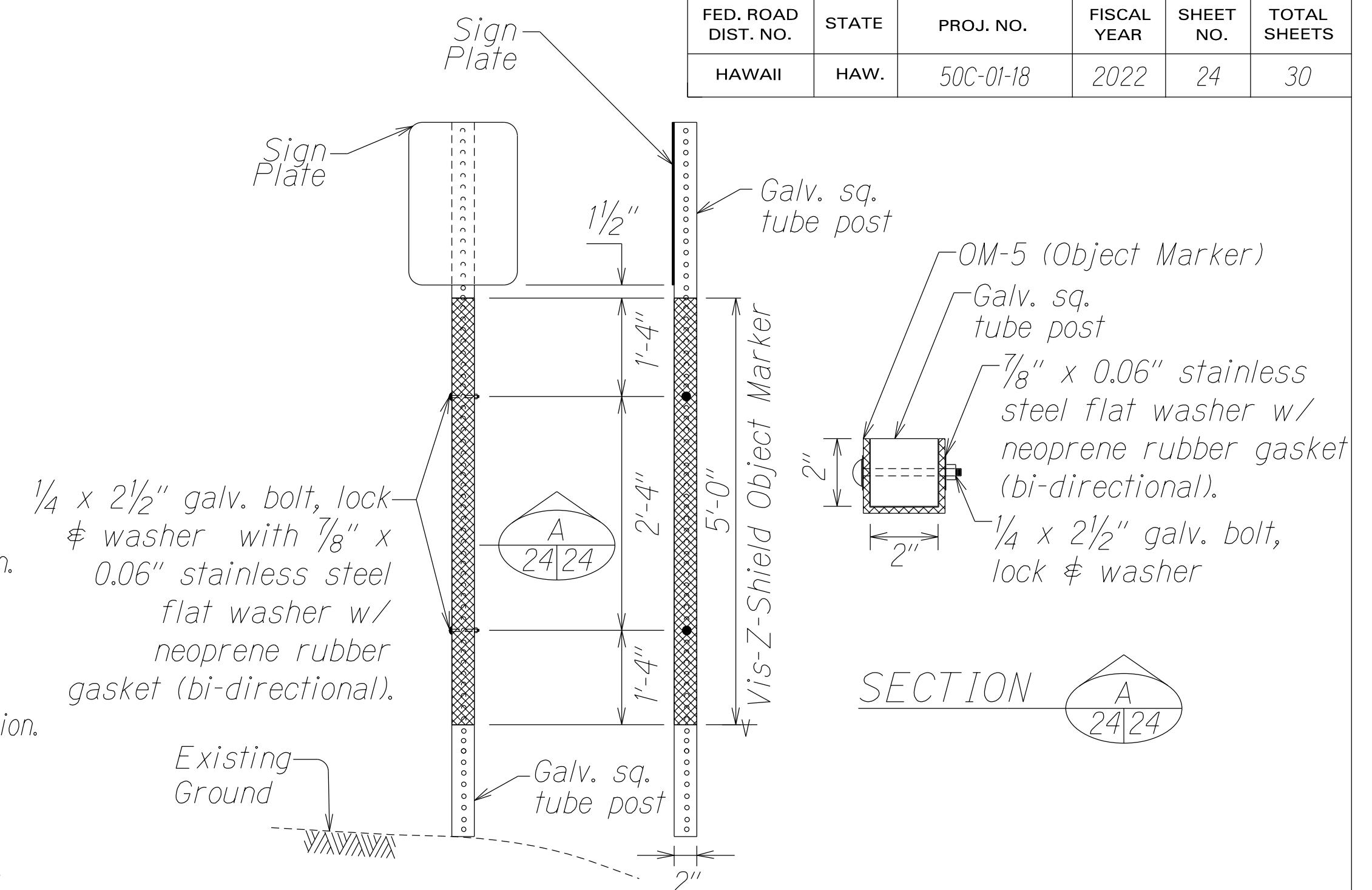


CROSSWALK STRIPING DETAIL

Not to Scale



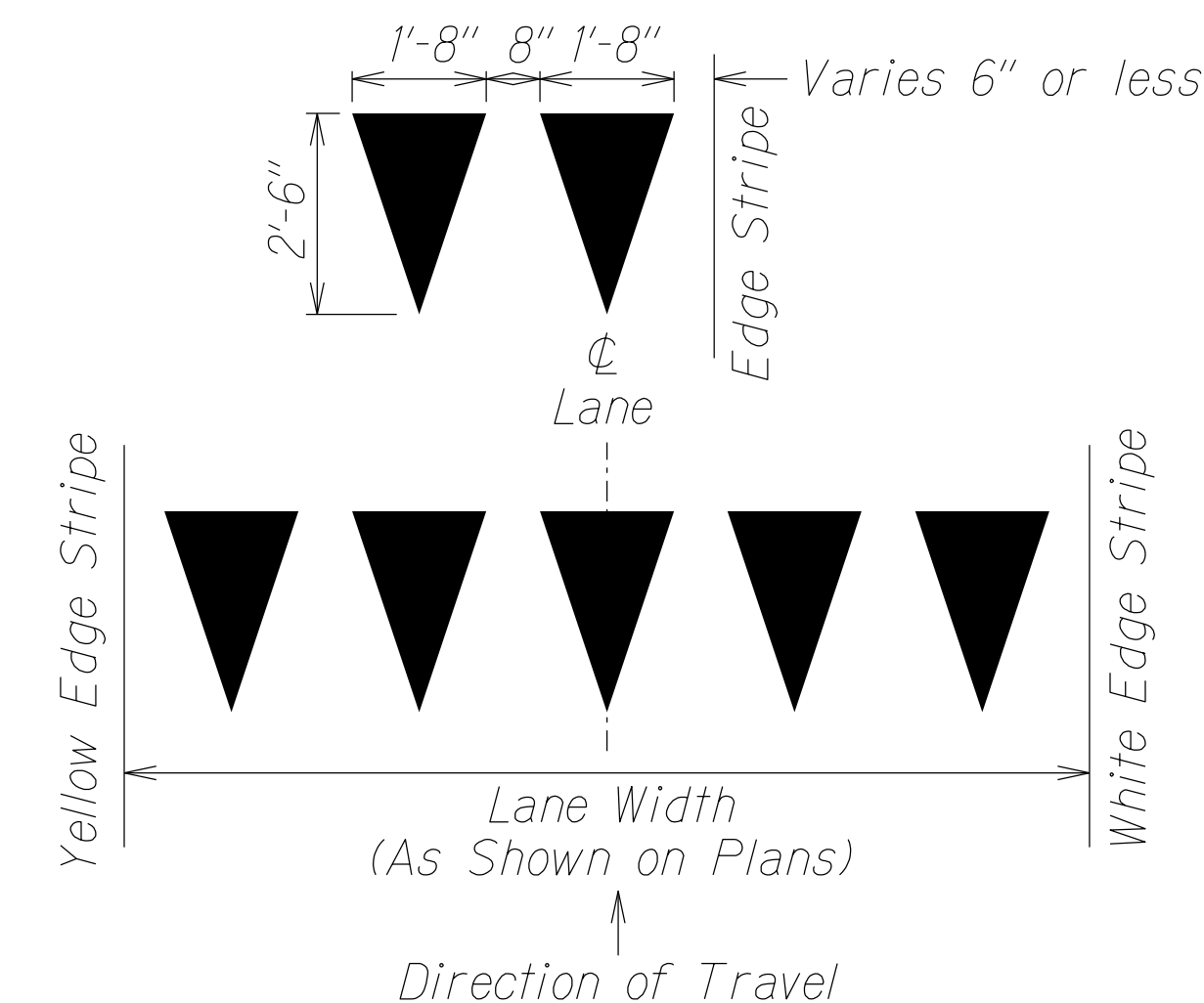
BUS BAY



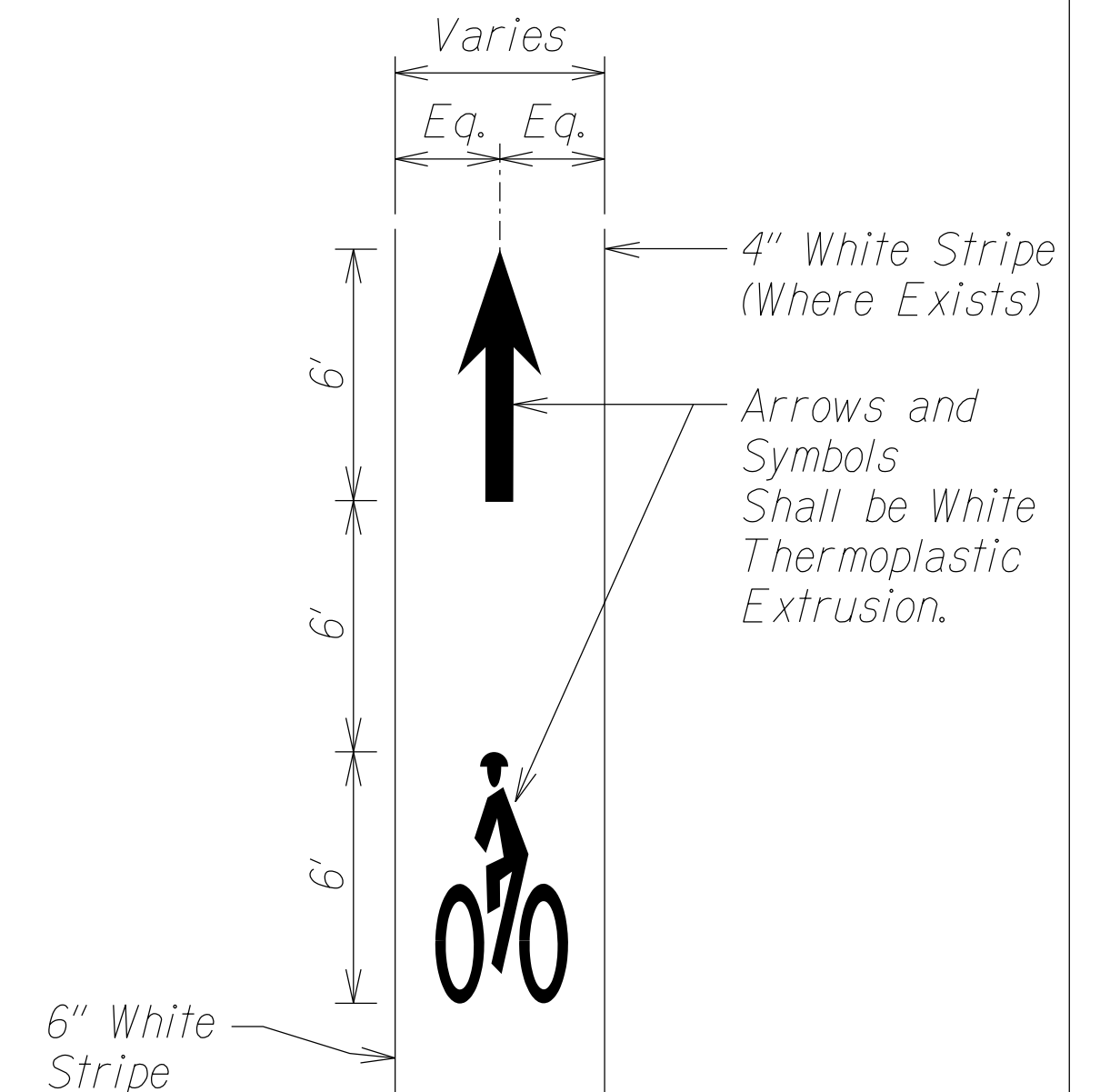
FRONT VIEW SIDE VIEW

OBJECT MARKER (OM-5) DETAIL @ TRAFFIC SIGN POST

Not to Scale



YIELD LINE



BIKE LANE PAVEMENT

MARKING DETAIL

Not to Scale

STATE OF HAWAII	
DEPARTMENT OF TRANSPORTATION	
HIGHWAYS DIVISION	
PAVEMENT MARKING LEGEND,	
DETAILS & NOTES	
KAUMUALII HIGHWAY INTERSECTION IMPROVEMENTS	
at Lauoho Road and Kuli Road	
Project No. 50C-01-18	
Scale: As Noted	Date: January 2022
SHEET No. T1 OF 3 SHEETS	