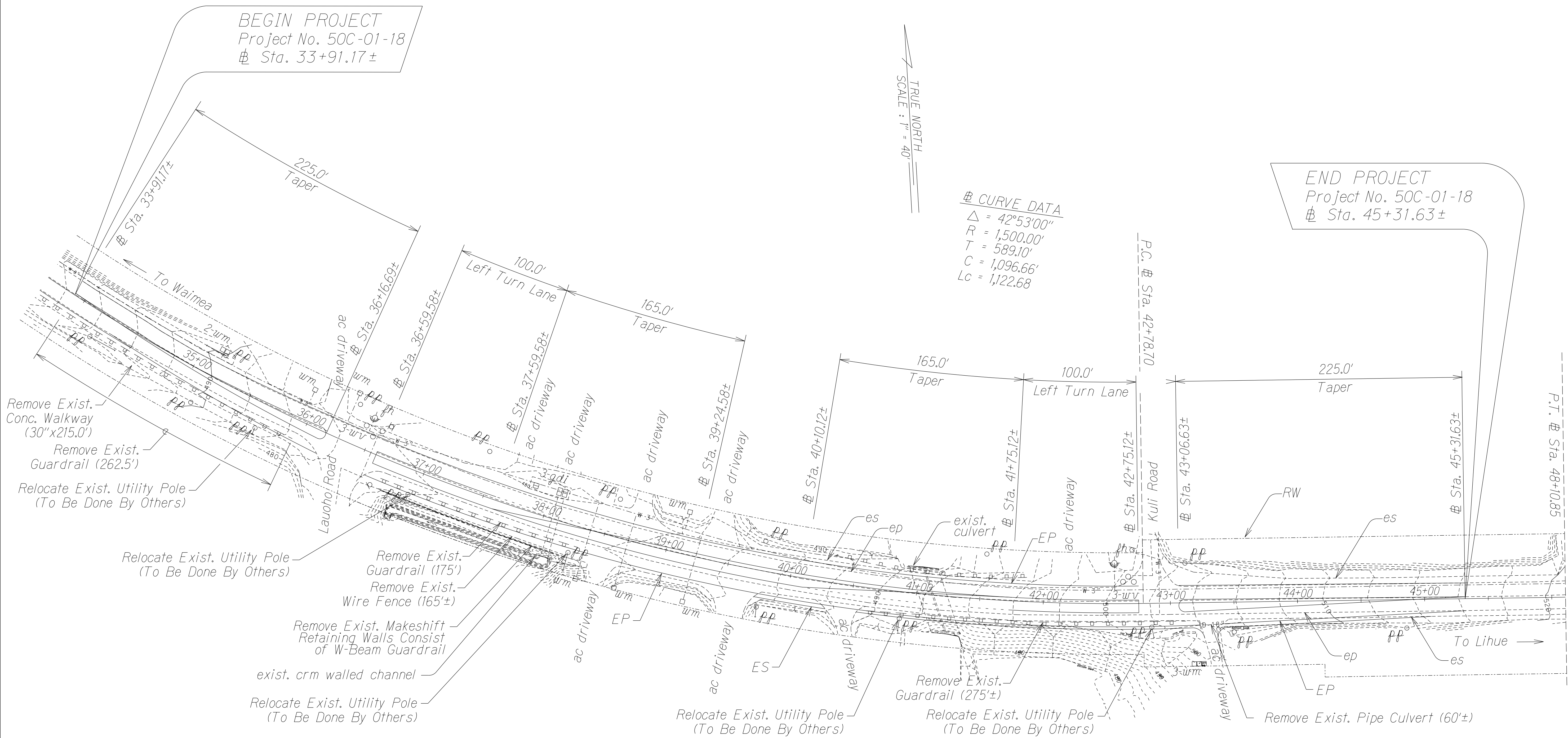


FED. ROAD DIST. NO.	STATE	PROJ. NO.	FISCAL YEAR	SHEET NO.	TOTAL SHEETS
HAWAII	HAW.	50C-01-18	2022	18	30



ORIGINAL PLAN	SURVEY PLOTTED BY	DATE
NOTE BOOK	DRAWN BY	
DESIGNED BY	CHECKED BY	
QUANTITIES BY		
CHECKED BY		

STATE OF HAWAII
DEPARTMENT OF TRANSPORTATION
HIGHWAYS DIVISION

**GENERAL ROADWAY
IMPROVEMENT LAYOUT**

KAUMUALII HIGHWAY INTERSECTION IMPROVEMENTS
at Lauloa Road and Kuli Road
Project No. 50C-01-18
Scale: 1" = 40' Date: January 2022

SHEET No. 1 OF 1 SHEETS