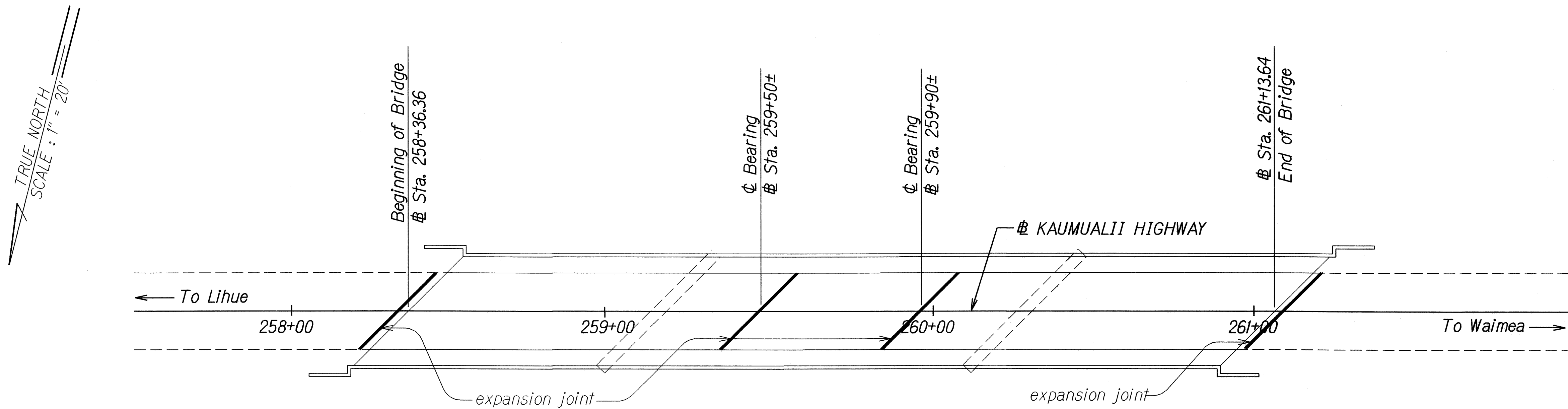
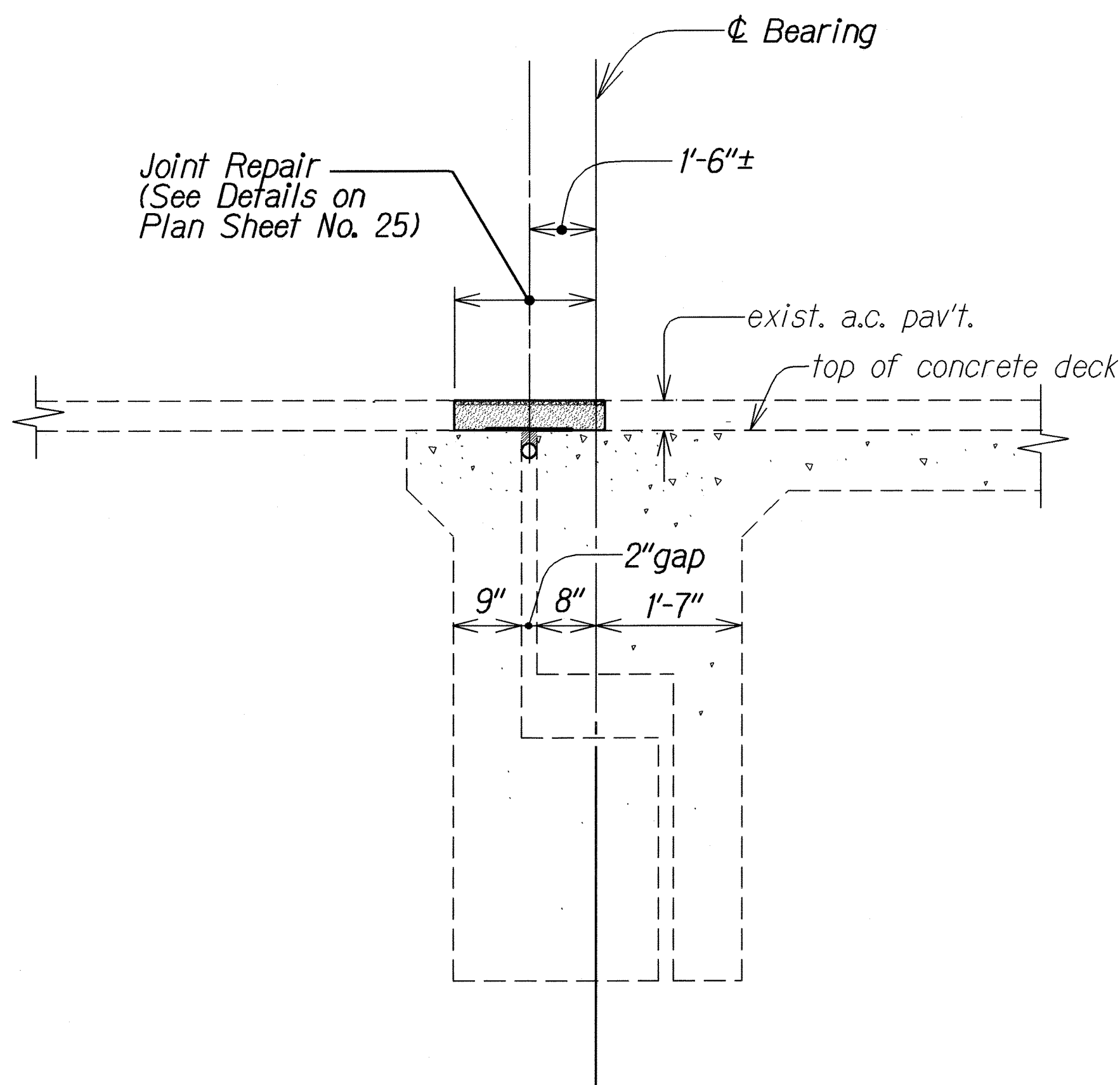


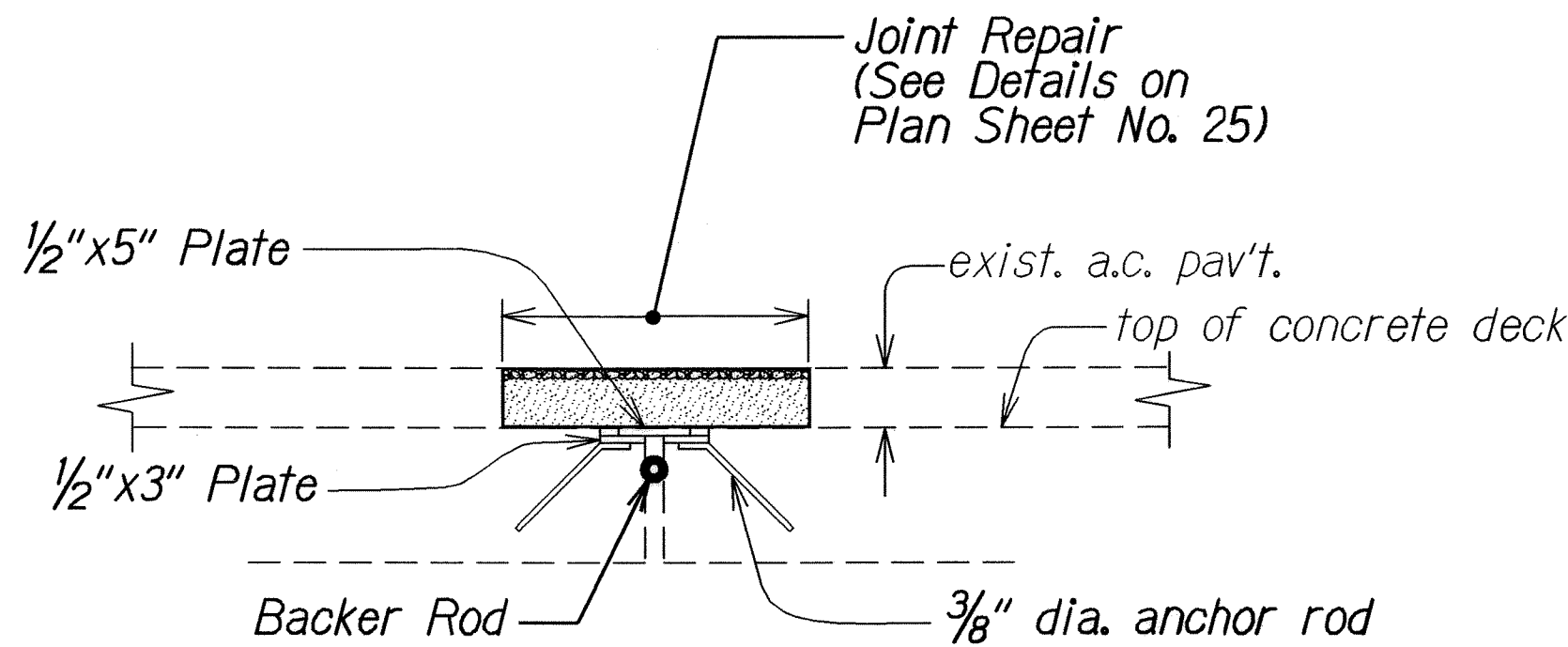
FED. ROAD DIST. NO.	STATE	PROJ. NO.	FISCAL YEAR	SHEET NO.	TOTAL SHEETS
HAWAII	HAW.	50C-03-07M	2009	24	25



PLAN - HANAPEPE BRIDGE
Scale: 1"=20'



TYPICAL JOINT DETAIL AT ABUTMENTS
Scale: 3/4"= 1'-0"



TYPICAL JOINT DETAIL AT INTERMEDIATE SPANS
Scale: 1" = 1'-0"

- NOTES:**
1. Dimensions based on record drawings. Contractor shall verify existing field conditions prior to bidding.
 2. **LANE CLOSURES:** One lane shall remain open to traffic at all times. One lane may be closed on the bridge between 8:30 AM and 3:30 PM.
 3. See Specifications, Section 104 - Scope of Work for details.
 4. Remove and dispose of existing bridge joints. Removal and disposal of existing bridge joints shall be considered incidental to contract Item No. 677.0100 - Joint Seals.

SURVEY PLOTTED BY	DATE
DRAWN BY	7/08
DESIGNED BY	
QUANTITIES BY	
CHECKED BY	

STATE OF HAWAII
DEPARTMENT OF TRANSPORTATION
HIGHWAYS DIVISION

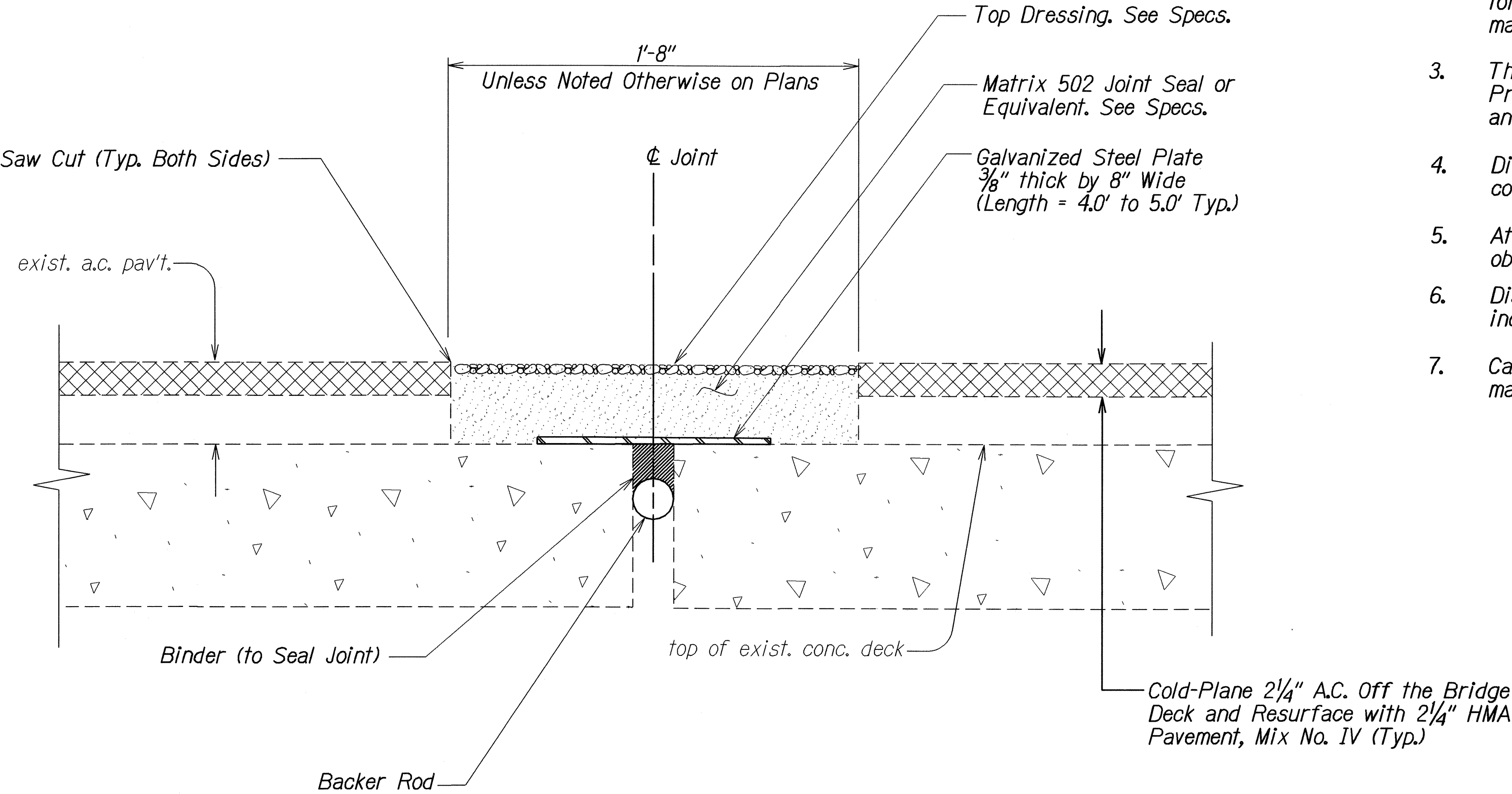
BRIDGE JOINT DETAILS

KAUMUALII HIGHWAY RESURFACING
Halewili Road to Hanapepe Bridge
Project No. 50C-03-07M

Scale: 1" = 40" Date: November 2008

SHEET No. 1 OF 2 SHEETS

FED. ROAD DIST. NO.	STATE	PROJ. NO.	FISCAL YEAR	SHEET NO.	TOTAL SHEETS
HAWAII	HAW.	50C-03-07M	2009	25	25



JOINT DETAIL
 Scale: 3"=1'

NOTES FOR BRIDGE JOINT REPAIRS:

1. The scope of work for this part of the project consists of replacing the existing joint seals of the expansion joints with new joint seals according to the plans and specifications.
2. The Contractor is reminded of the requirements of Subsection 105.16 - Subcontracts, which requires him to perform work amounting to not less than 30 percent of the total contract cost less deductible items. Non-compliance with this Subsection may be grounds for rejection of bid.
3. The Contractor's attention is directed to the following Sections of the Special Provisions: Subsection 107.06 - Contractor Duty Regarding Public Convenience; and Section 645 - Work Zone Traffic Control.
4. Dimensions based on record drawings. Contractor shall verify existing field conditions prior to bidding.
5. At the end of each day's work, the Contractor shall remove all equipment and other obstructions to permit free and safe passage of public traffic.
6. Disposal of material removed to accomplish joint repair shall be considered incidental to joint seal work.
7. Care shall be taken to ensure that no debris, petroleum products, deleterious materials or wastes be allowed to fall, flow, leach or otherwise enter the water.

ORIGINAL PLAN	SURVEY PLOTTED BY	DATE
NOTE BOOK	DRAWN BY	7/08
3/08/08/07	DESIGNED BY	
	QUANTITIES BY	
	CHECKED BY	

STATE OF HAWAII
DEPARTMENT OF TRANSPORTATION
HIGHWAYS DIVISION

BRIDGE JOINT DETAILS
KAUMUALII HIGHWAY RESURFACING
Halewili Road to Hanapepe Bridge
Project No. 50C-03-07M

Scale: 1" = 40"
Date: November 2008

SHEET No. 2 OF 2 SHEETS