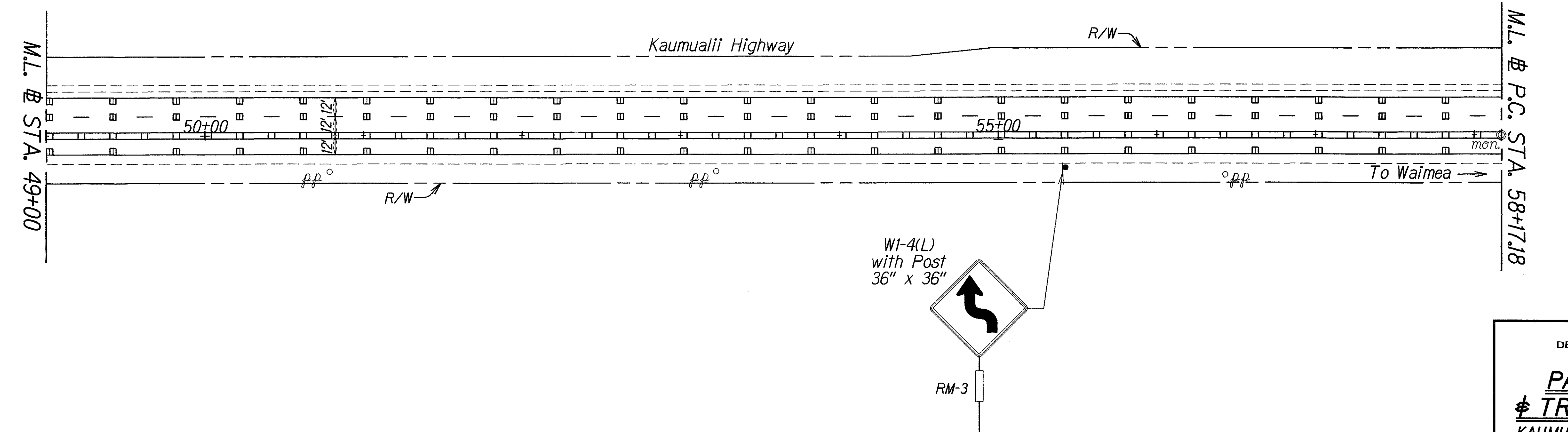
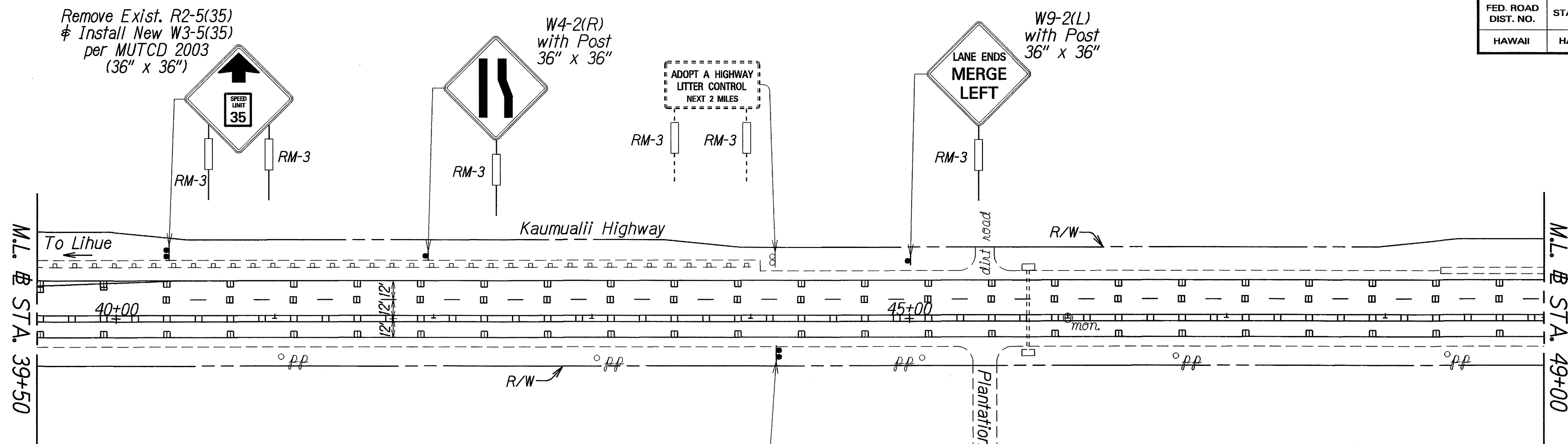




| FED. ROAD DIST. NO. | STATE | PROJ. NO.  | FISCAL YEAR | SHEET NO. | TOTAL SHEETS |
|---------------------|-------|------------|-------------|-----------|--------------|
| HAWAII              | HAW.  | 50C-01-07M | 2007        | 20        | 24           |



TRUE NORTH  
SCALE: 1" = 40'

TRUE NORTH  
SCALE: 1" = 40'

|               |               |
|---------------|---------------|
| ORIGINAL PLAN | DATE: 8/20/06 |
| NOTE BOOK     | DESIGNED BY   |
| QUANTITIES BY | CHECKED BY    |

STATE OF HAWAII  
DEPARTMENT OF TRANSPORTATION  
HIGHWAYS DIVISION

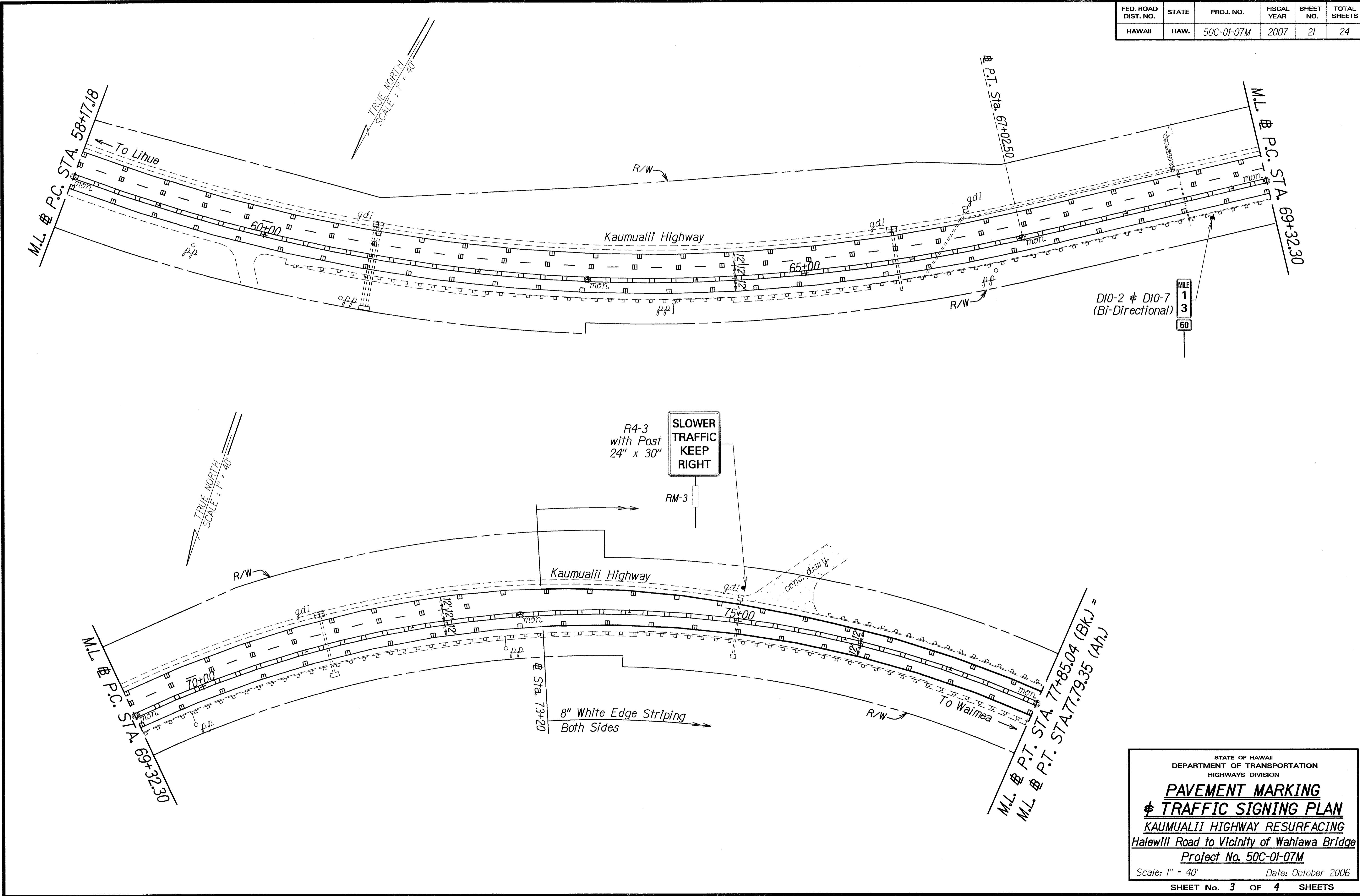
**PAVEMENT MARKING  
& TRAFFIC SIGNING PLAN**

**KAUMUALII HIGHWAY RESURFACING**  
Halewili Road to Vicinity of Wahiawa Bridge  
Project No. 50C-01-07M

Scale: 1" = 40'      Date: October 2006

SHEET No. 2 OF 4 SHEETS

| FED. ROAD DIST. NO. | STATE | PROJ. NO.  | FISCAL YEAR | SHEET NO. | TOTAL SHEETS |
|---------------------|-------|------------|-------------|-----------|--------------|
| HAWAII              | HAW.  | 50C-01-07M | 2007        | 21        | 24           |



|                   |      |
|-------------------|------|
| ORIGINAL PLAN     | DATE |
| SURVEY PLOTTED BY | 2/06 |
| DESIGNED BY       |      |
| QUANTITIES BY     |      |
| CHECKED BY        |      |

STATE OF HAWAII  
DEPARTMENT OF TRANSPORTATION  
HIGHWAYS DIVISION

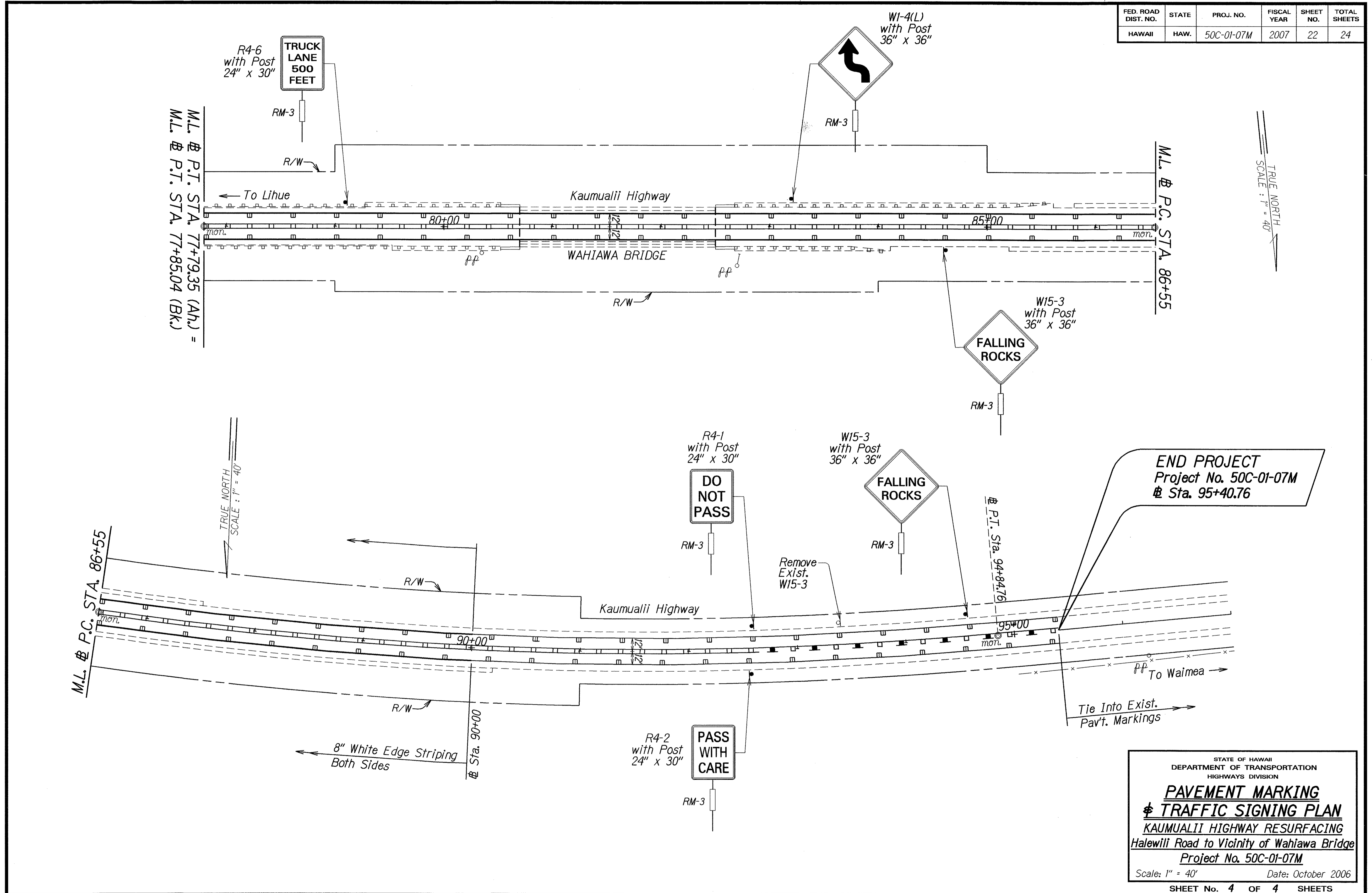
**PAVEMENT MARKING  
& TRAFFIC SIGNING PLAN**

**KAUMUALII HIGHWAY RESURFACING**  
Halewili Road to Vicinity of Wahiawa Bridge  
Project No. 50C-01-07M

Scale: 1" = 40'      Date: October 2006

SHEET No. 3 OF 4 SHEETS

| FED. ROAD DIST. NO. | STATE | PROJ. NO.  | FISCAL YEAR | SHEET NO. | TOTAL SHEETS |
|---------------------|-------|------------|-------------|-----------|--------------|
| HAWAII              | HAW.  | 50C-01-07M | 2007        | 22        | 24           |



|                   |      |
|-------------------|------|
| DATE              | 8/16 |
| SURVEY PLOTTED BY |      |
| DRAWN BY          |      |
| TRACED BY         |      |
| NOTED BY          |      |
| QUANTIFIED BY     |      |
| CHECKED BY        |      |

STATE OF HAWAII  
DEPARTMENT OF TRANSPORTATION  
HIGHWAYS DIVISION

**PAVEMENT MARKING  
& TRAFFIC SIGNING PLAN**

KAUMUALII HIGHWAY RESURFACING  
Halawili Road to Vicinity of Wahiawa Bridge  
Project No. 50C-01-07M

Scale: 1" = 40' Date: October 2006

SHEET No. 4 OF 4 SHEETS