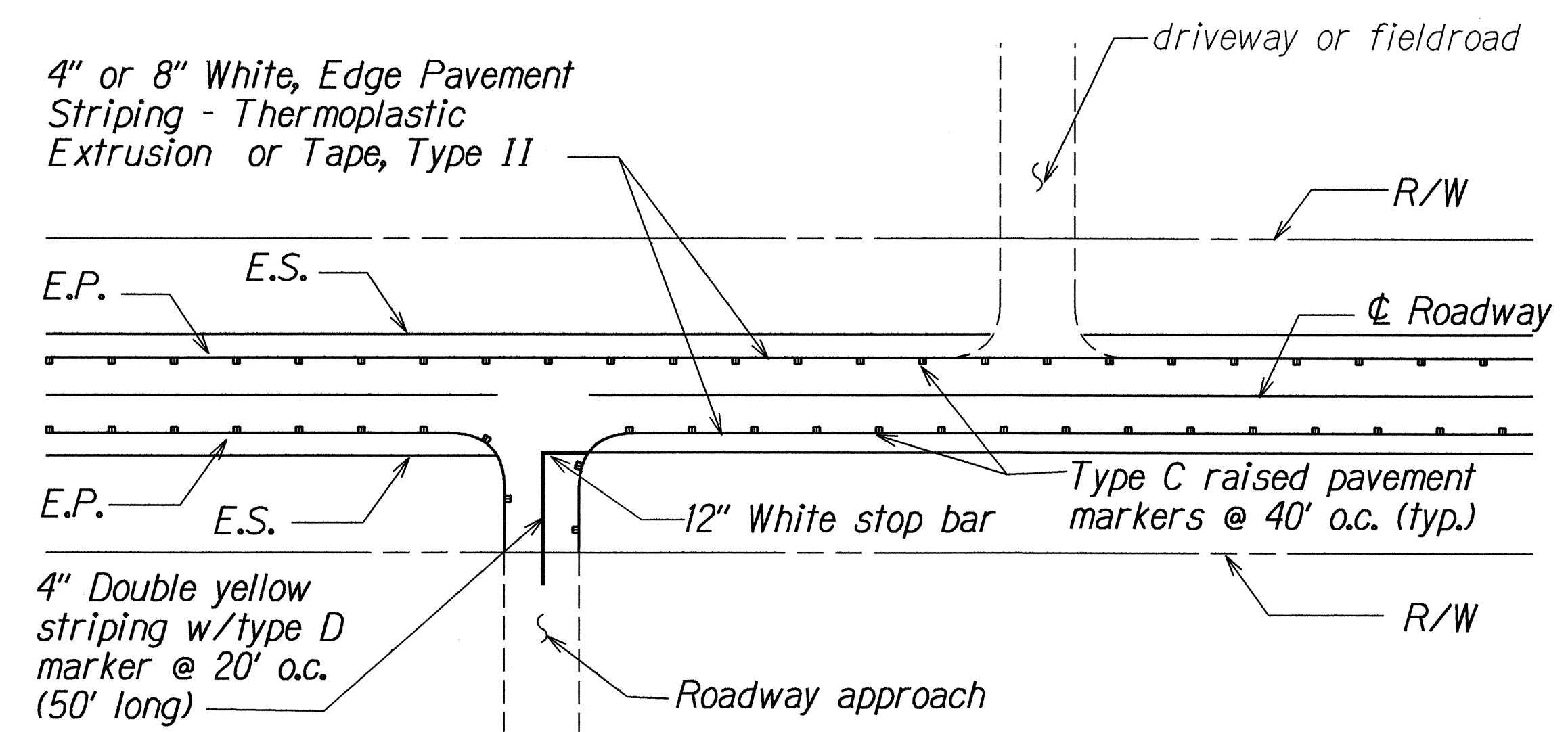
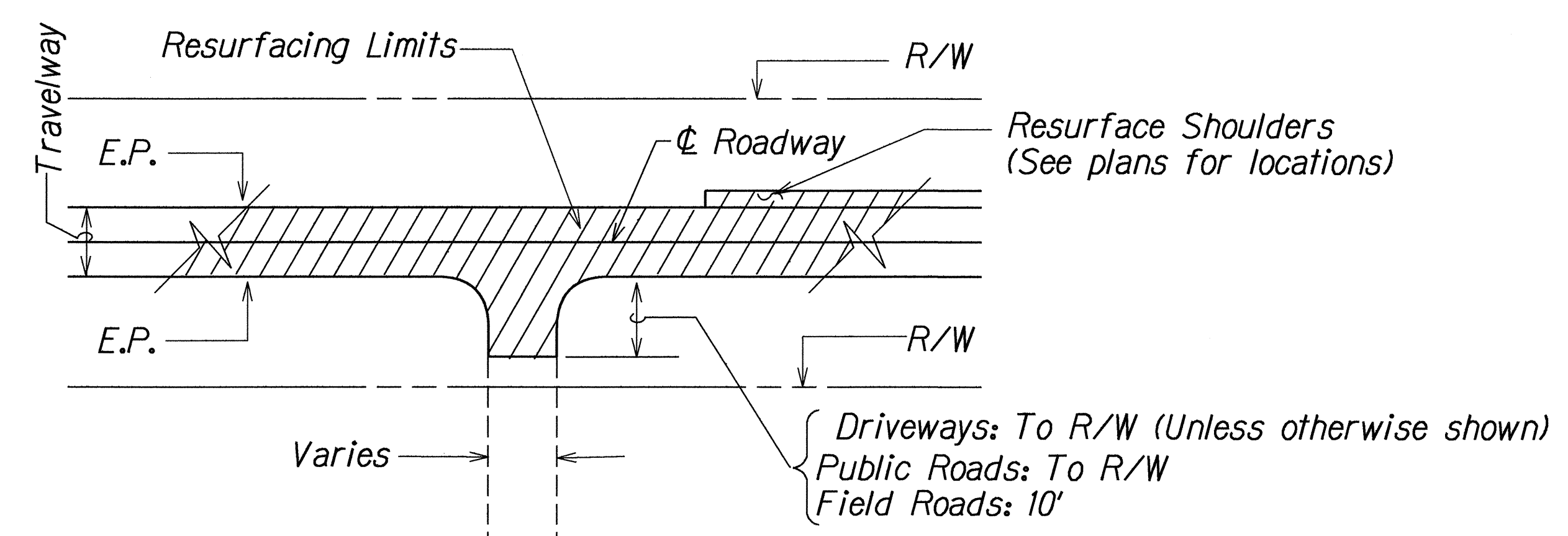


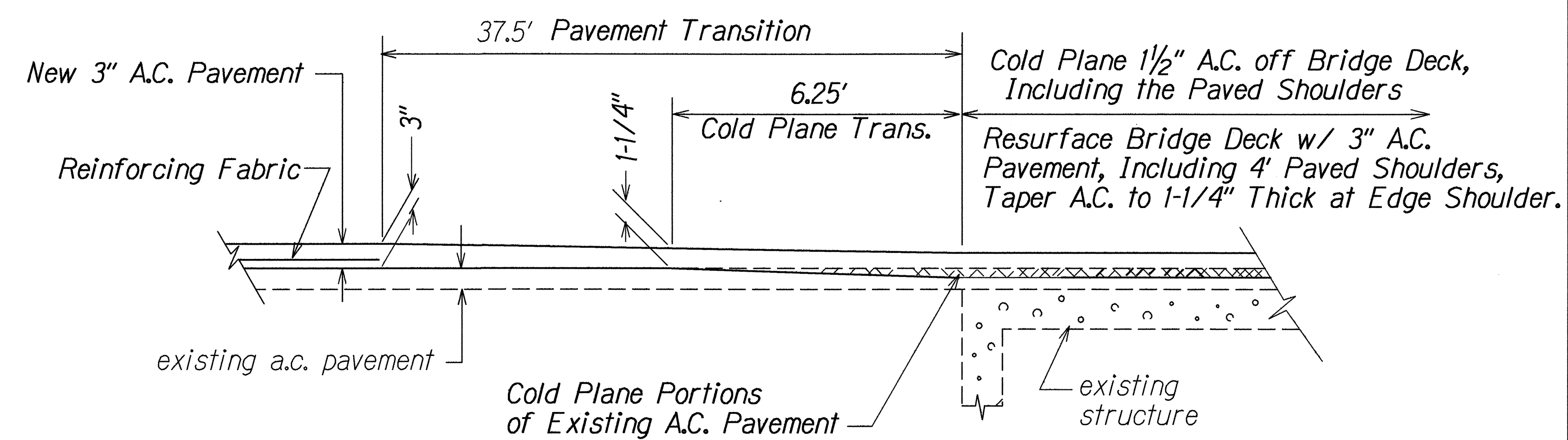
FED. ROAD DIST. NO.	STATE	FED. AID PROJ. NO.	FISCAL YEAR	SHEET NO.	TOTAL SHEETS
HAWAII	HAW.	STP-050-1(13)	1994	ADD.6	15



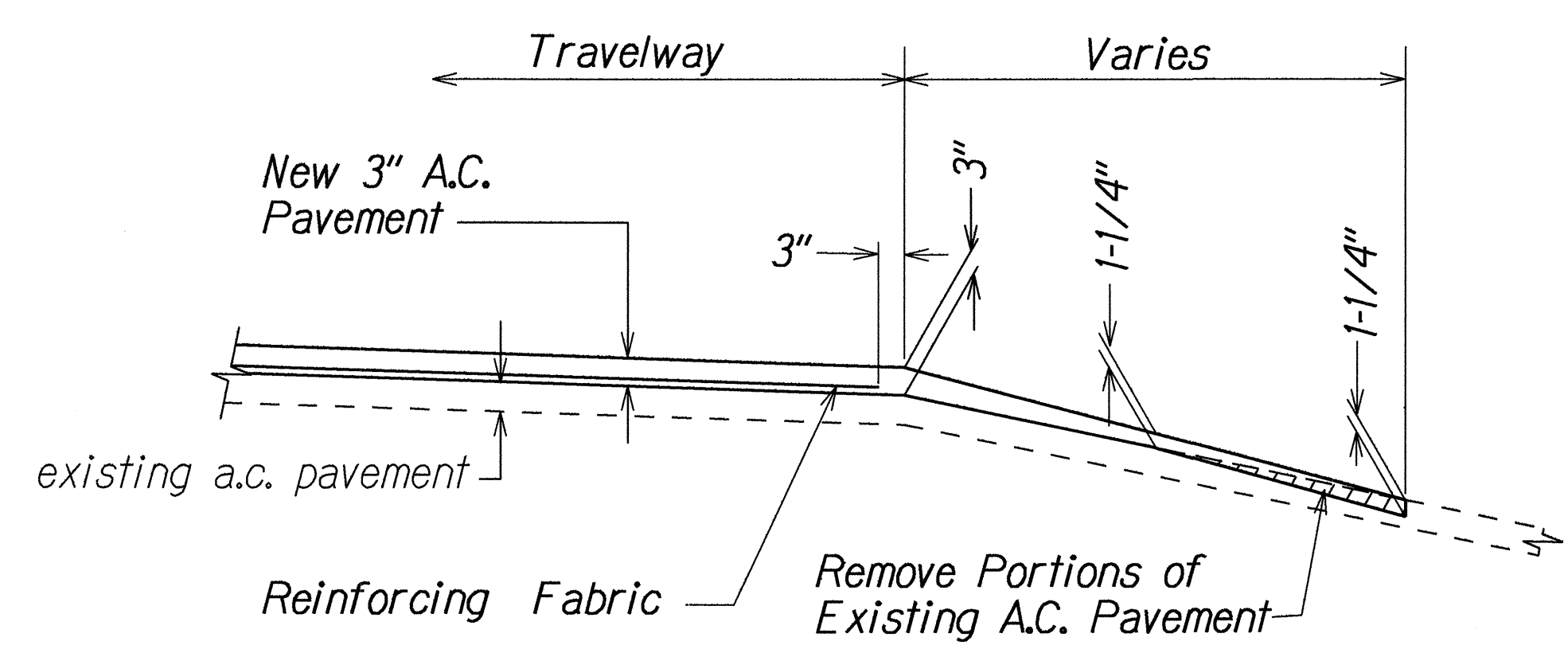
PLAN
TYPICAL EDGE LINE WITH
RAISED PAVEMENT MARKERS
Not To Scale



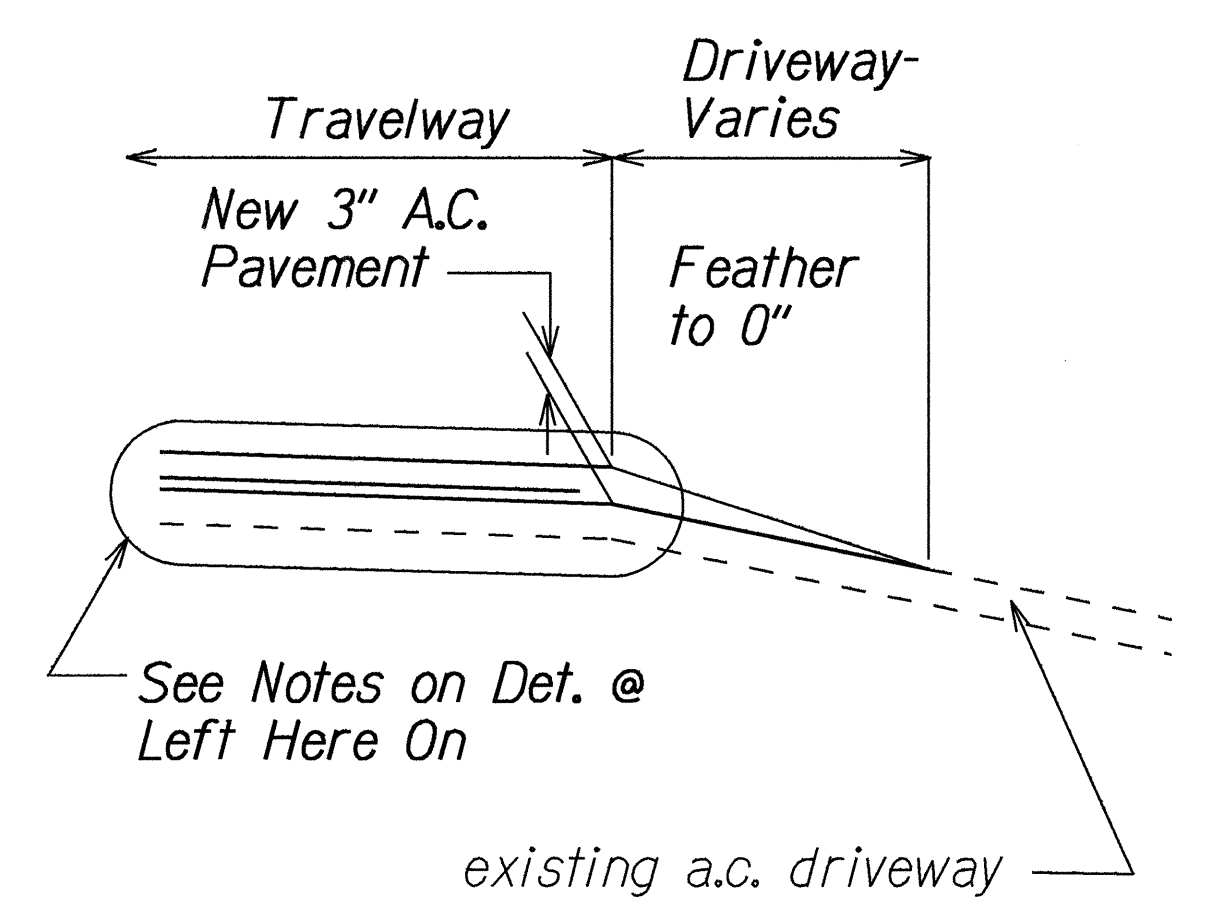
PLAN
TYPICAL RESURFACING LIMITS
Not To Scale



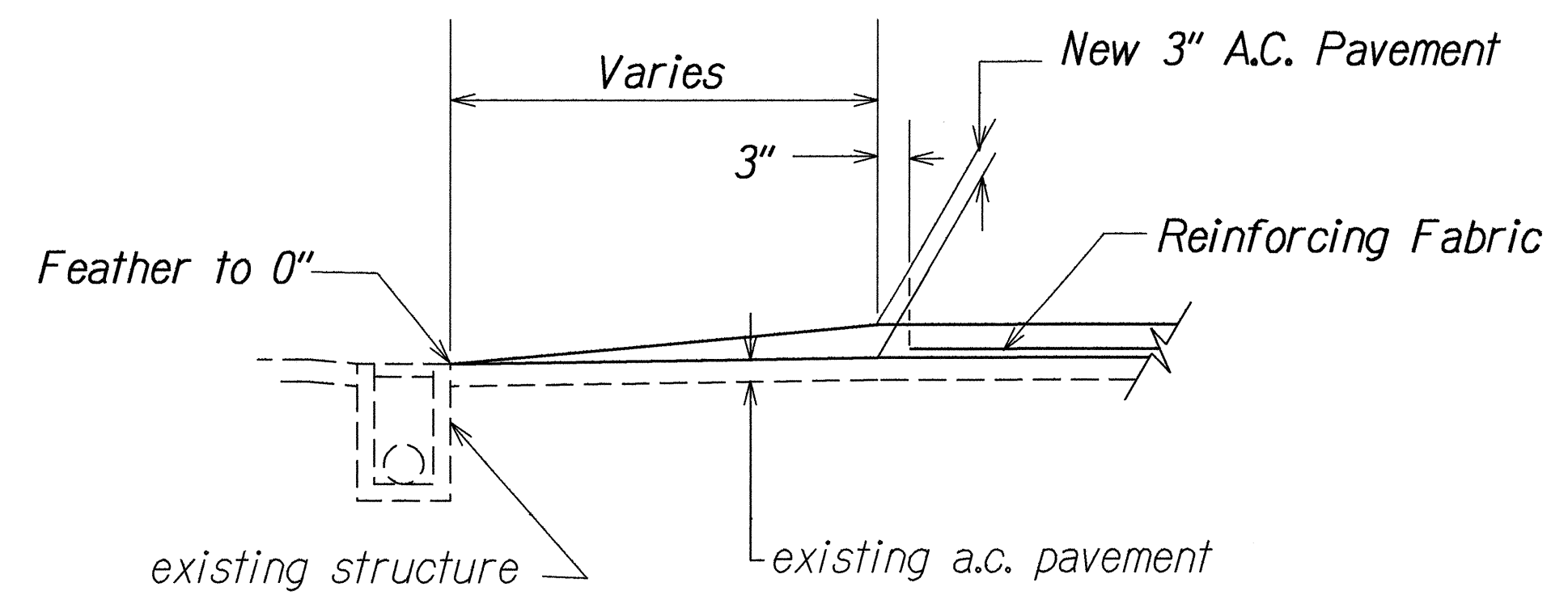
TYPICAL PAVEMENT TRANSITION
AT BRIDGES No. 3 & No. 4.
Not To Scale



TYPICAL PAVEMENT TRANSITION
AT INTERSECTIONS
Not To Scale



TYPICAL PAVEMENT TRANSITION
AT DRIVEWAYS
Not To Scale



TYPICAL TRANSITION
AT STRUCTURES
Not To Scale

6-2-94	Revised Typical Pavement Transitions
DATE	REVISION
STATE OF HAWAII DEPARTMENT OF TRANSPORTATION HIGHWAYS DIVISION TYPICAL PLANS SECTIONS & DETAILS KAUMUALII HIGHWAY RESURFACING Kekaha Landfill Road to Waimea Canyon Drive Federal-Aid Project No. STP-050-1(13) Scale: As Noted Date: September, 1993	
SHEET No. 1	OF 1 SHEETS