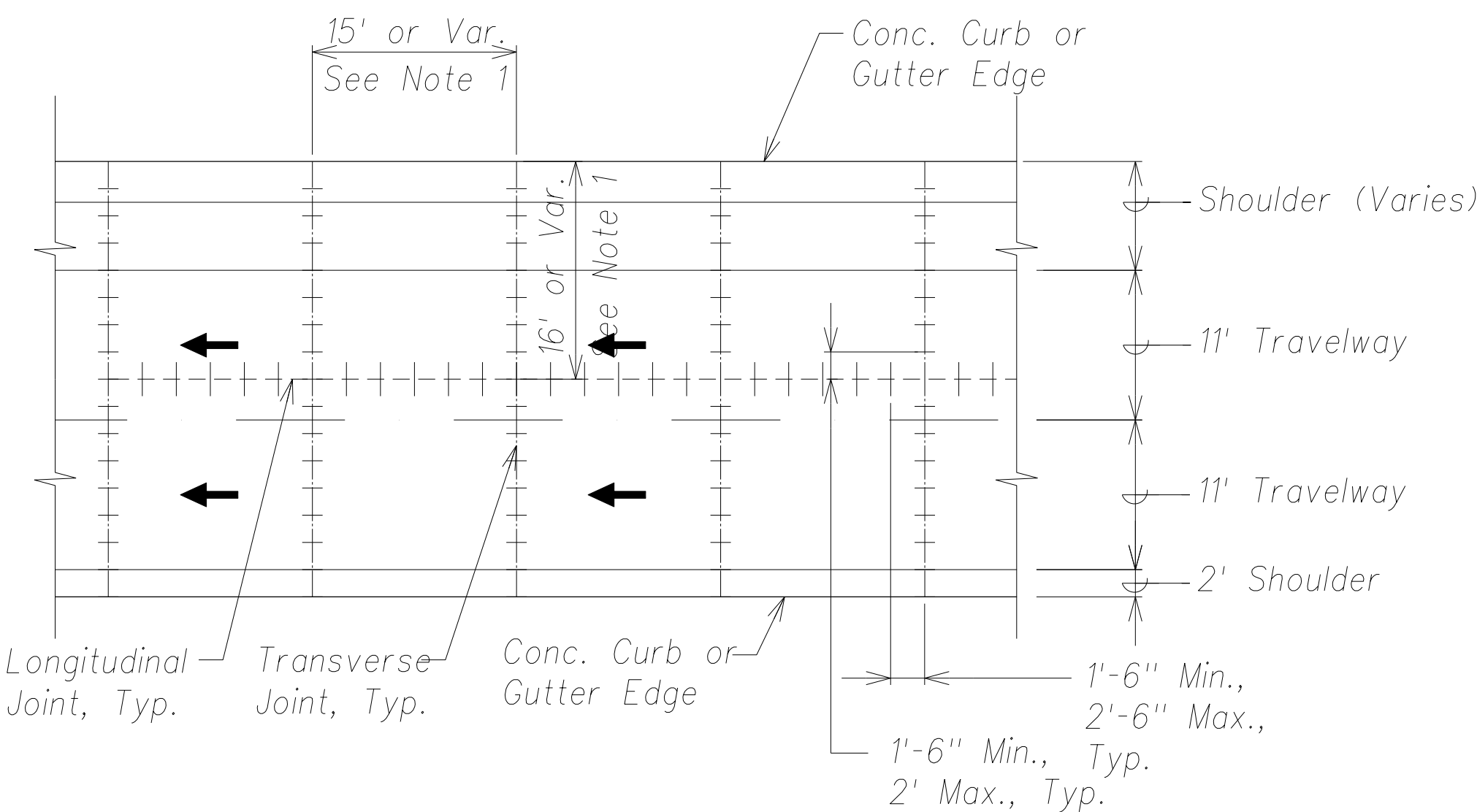
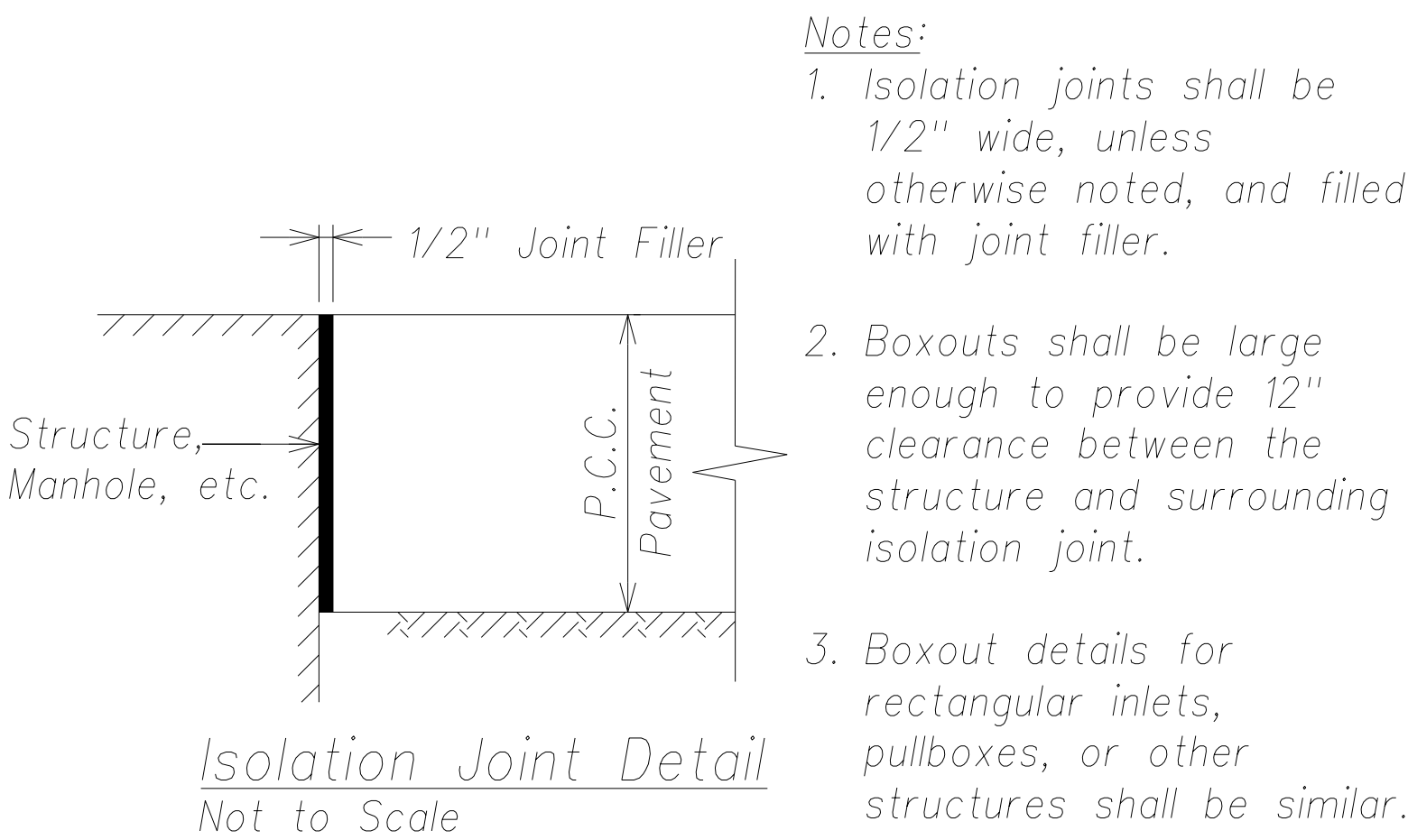


FED. ROAD DIST. NO.	STATE	FED. AID PROJ. NO.	FISCAL YEAR	SHEET NO.	TOTAL SHEETS
HAWAII	HAW.	ARR-050-1(036)	FY13/14	Model	141

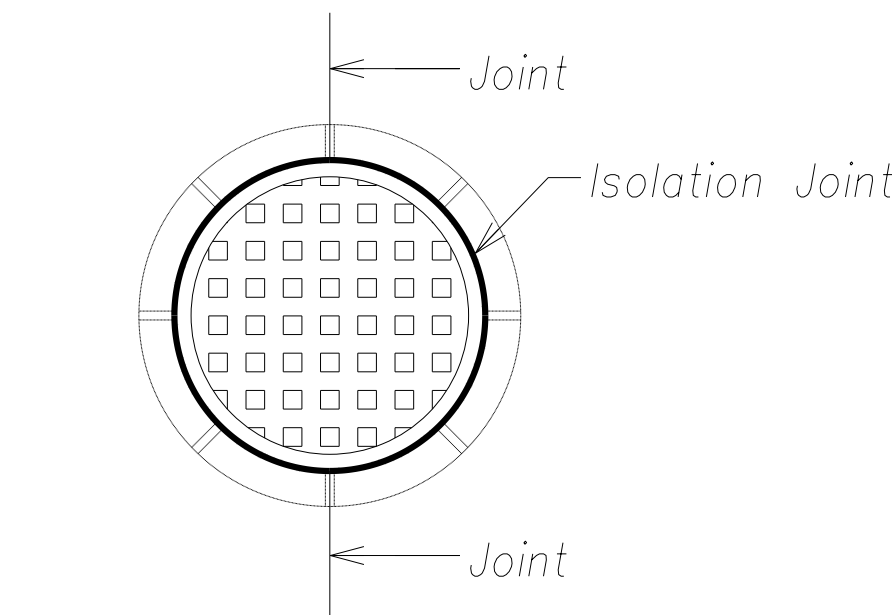
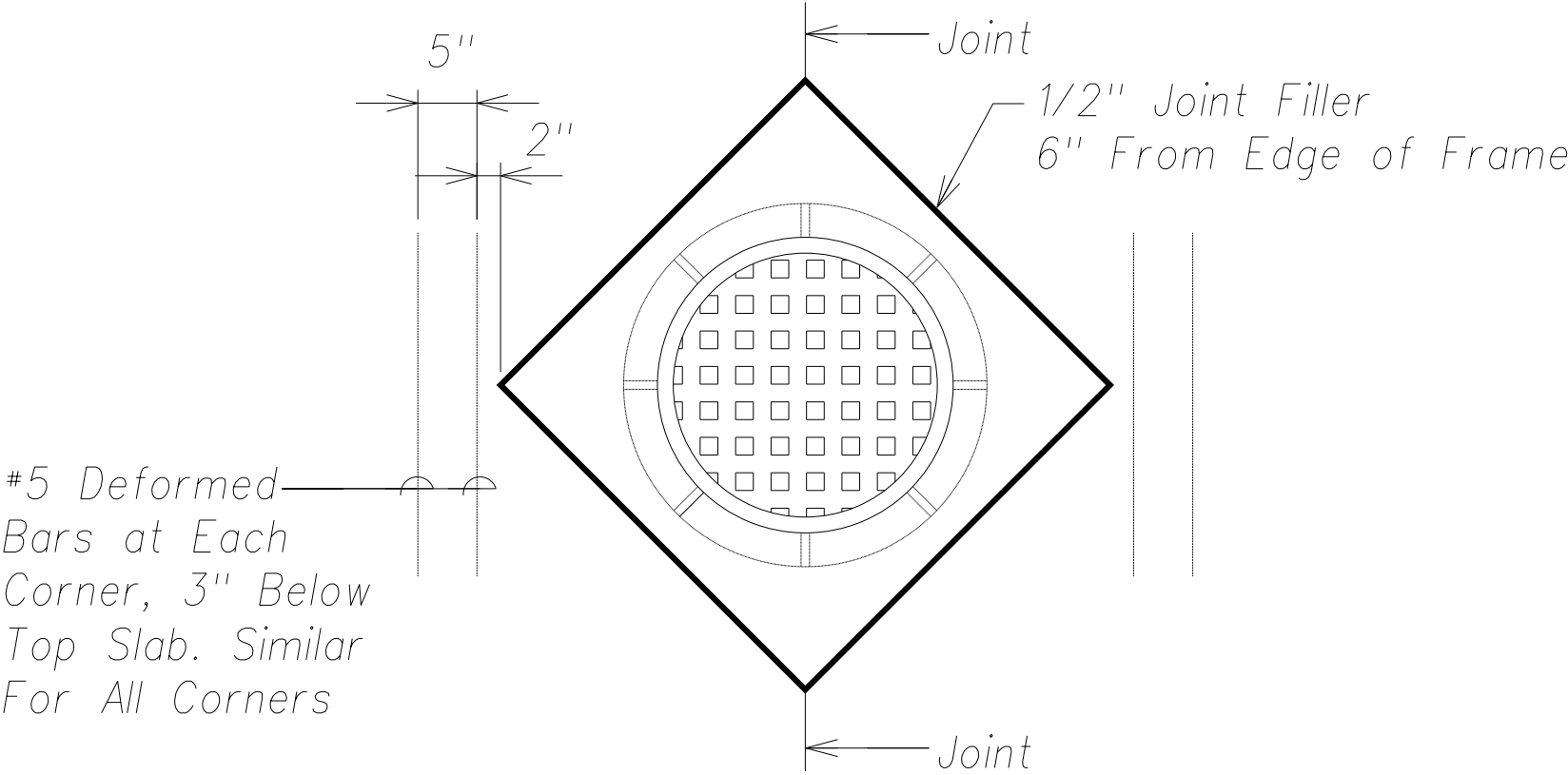
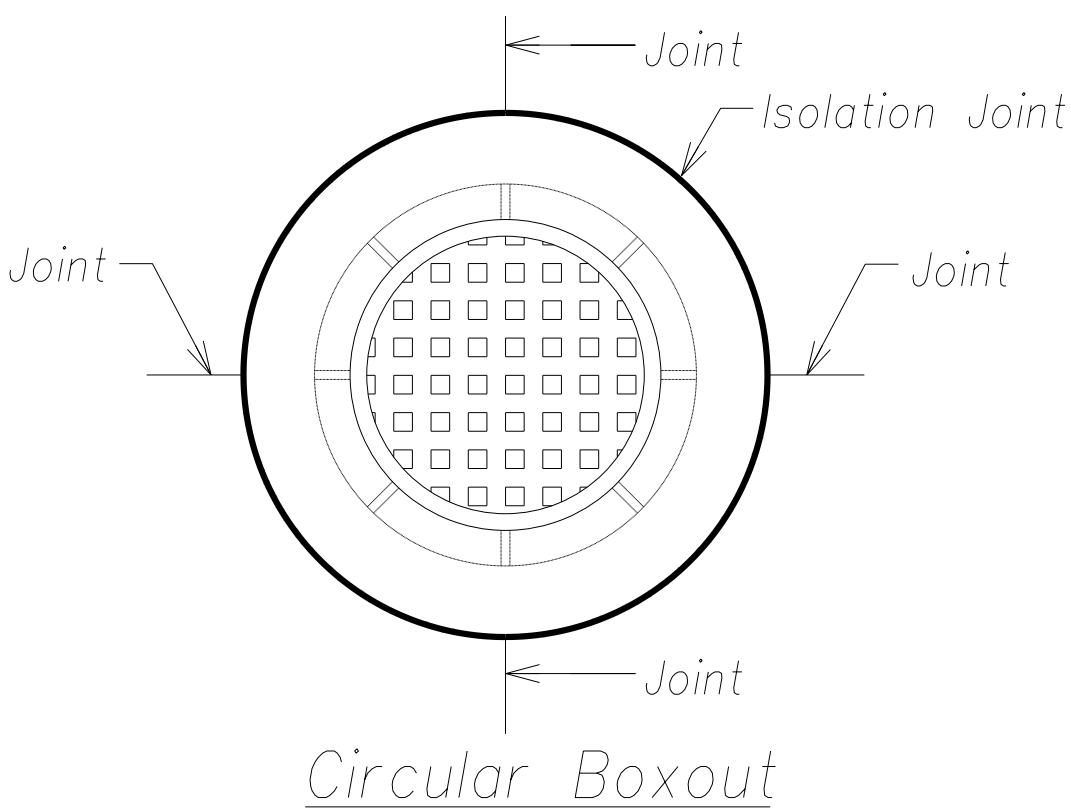
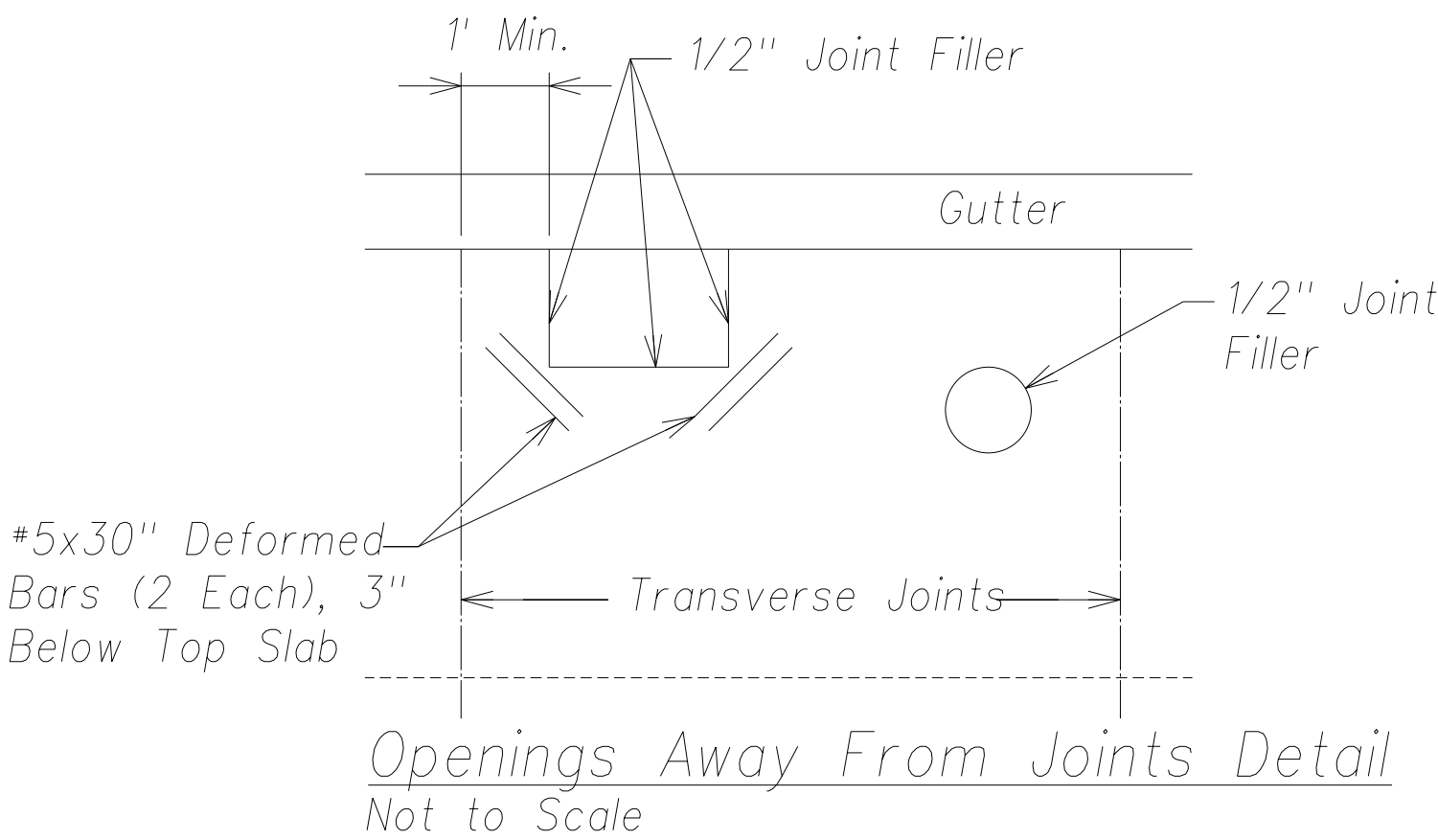
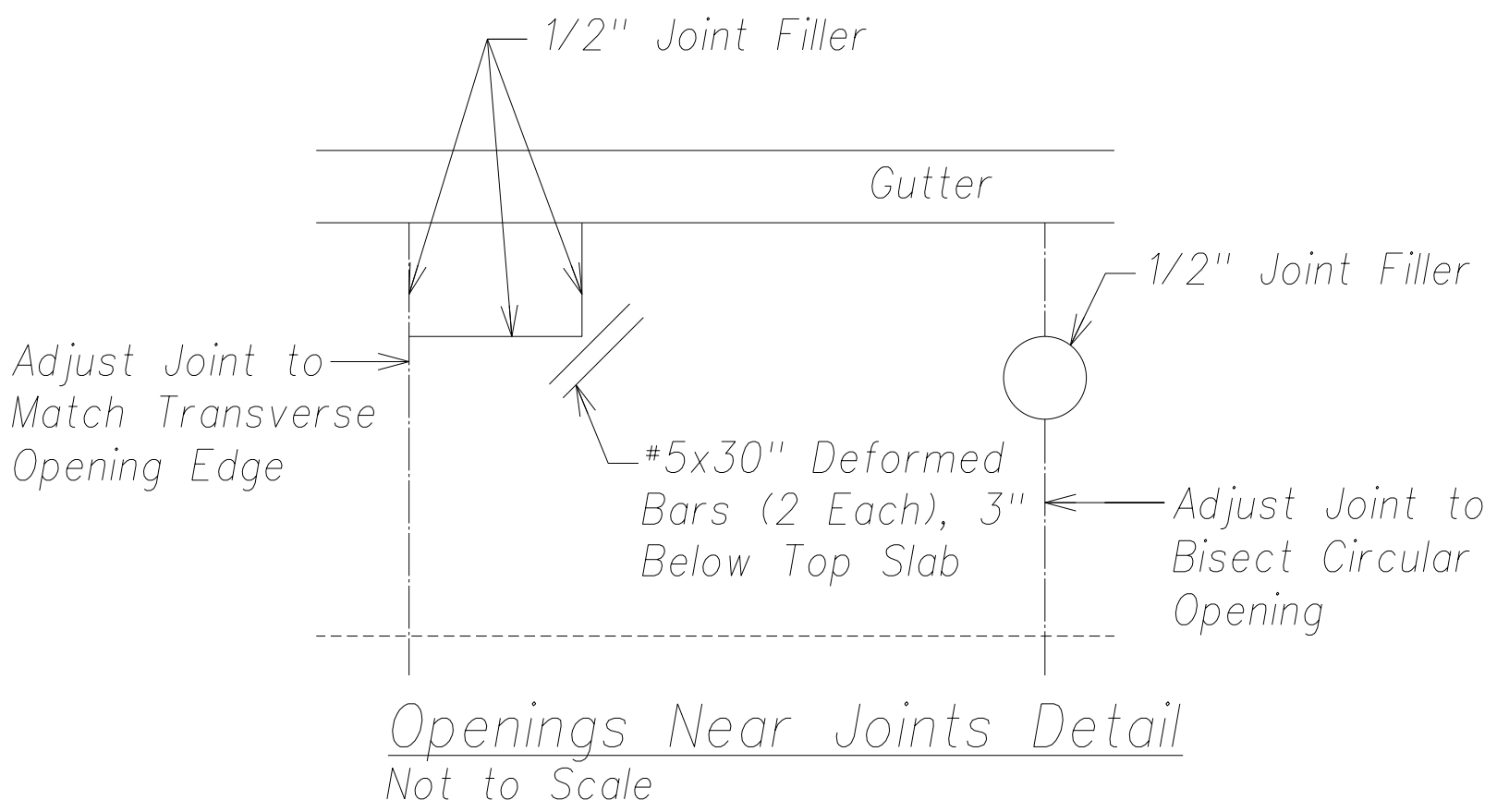
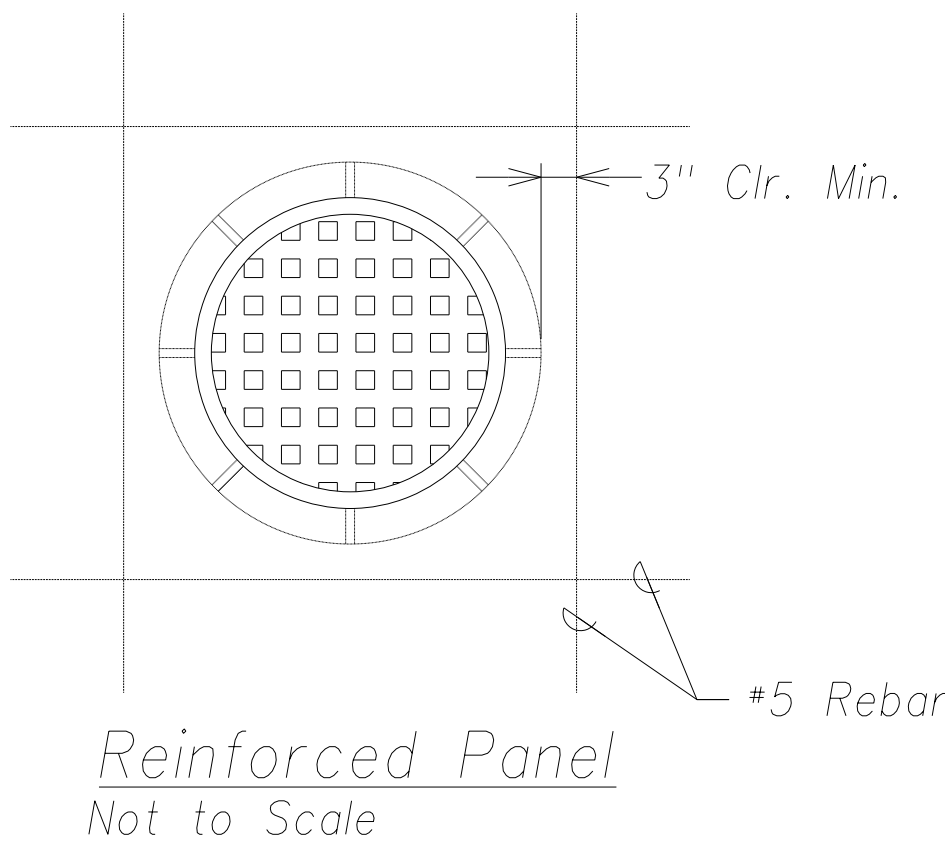
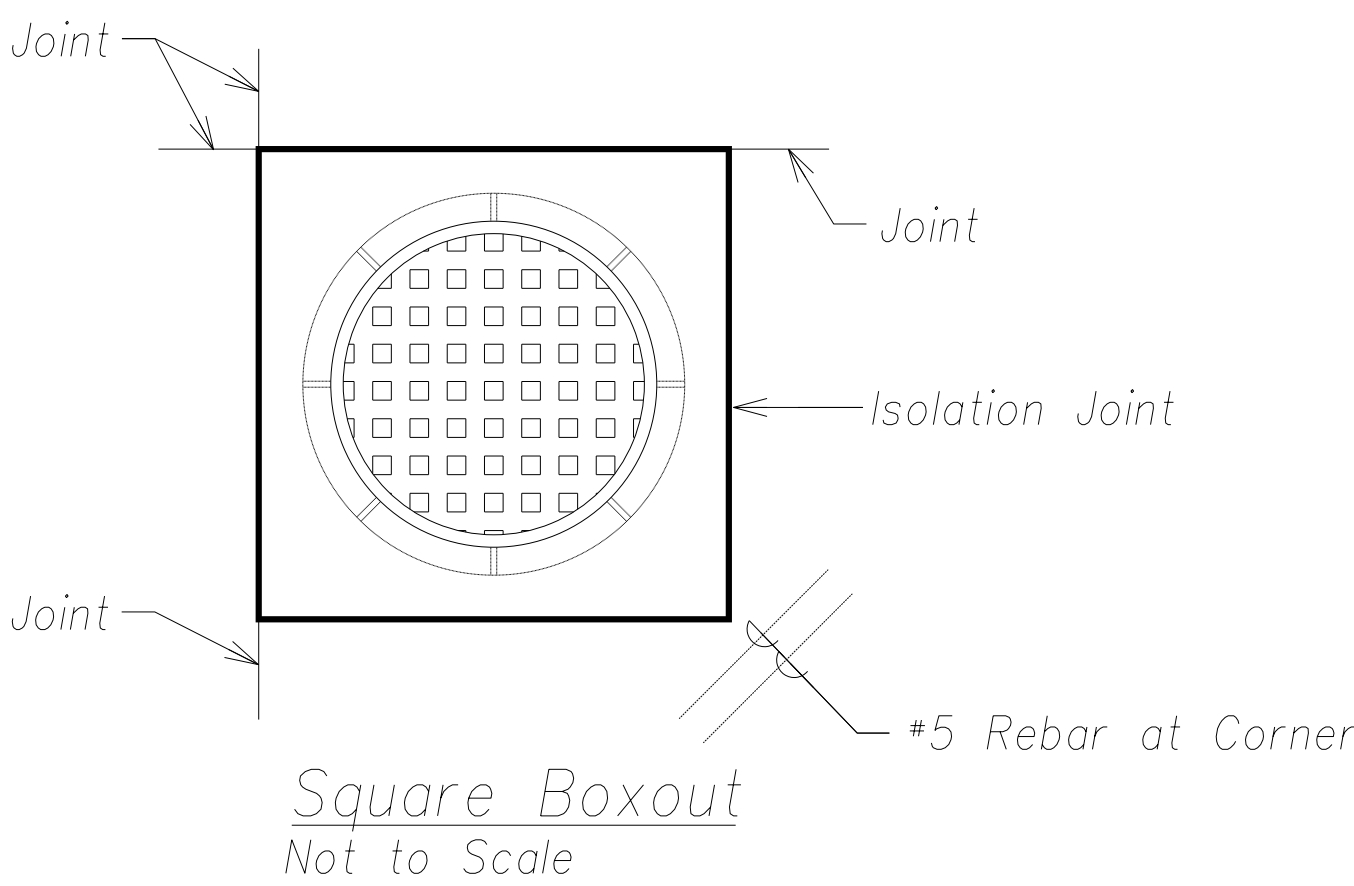
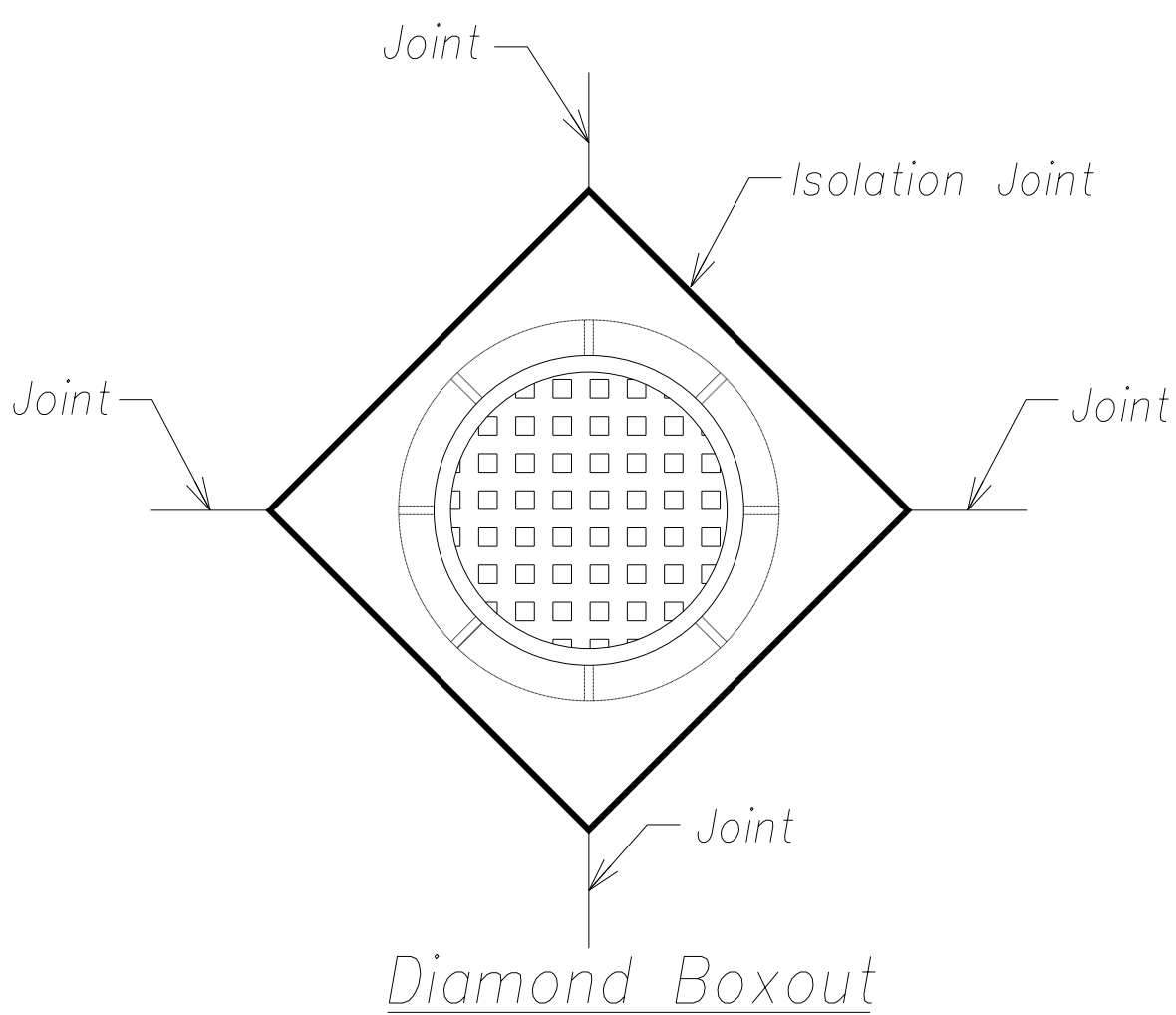


Typical PCC Pavement Joint
Location and Layout Plan
Not to Scale

- Notes:
1. Space transverse joint and longitudinal joint as shown on the Paving Plans. See sheet C-32 to sheet C-41.
 2. Reinforce odd shaped slabs and slabs with mismatched joints shown on the Jointing Plans. See State Std. Det. D-20 and Sht. C-60. Deformed Bars shall be 30" Long.
 3. Provide shop drawings for review by the engineer for joint layout where obstructions such as manholes are encountered, and at intersections with other streets. Manholes and othe obstructions shall not be located within 3" of a joint.
 4. Portland cement concrete pavement shall attain a minimum 14-day flexural strength, $f_r=650\text{psi}$.
 5. For Transverse Joint and Longitudinal Joint details, see State Standard Details D-19 and D-21. Deformed Bars shall be 30" Long.



Isolation Joint Detail
Not to Scale



Manhole Cover Boxout Details
Not to Scale

Openings with Corners -
Corners at a Joint Detail
Not to Scale

No Boxout
(Isolation Around Manhole)
Not to Scale



THIS WORK WAS PREPARED BY ME
OR UNDER MY SUPERVISION AND
CONSTRUCTION OF THIS PROJECT
WILL BE UNDER MY OBSERVATION.

April 30, 2016
SIGNATURE EXPIRATION DATE
OF THE LICENSE

STATE OF HAWAII DEPARTMENT OF TRANSPORTATION HIGHWAYS DIVISION	
PAVEMENT JOINT DETAILS	
PHASE 1 - KAUMUALII HIGHWAY LIHUE MILL BRIDGE TO RICE STREET	
PHASE 3 - REHABILITATION OF LIHUE MILL BRIDGE AND MAKAI WIDENING	
Scale: As Shown	Date: May 2, 2014
SHEET No. C-55 OF 82 SHEETS	

"AS-BUILT"

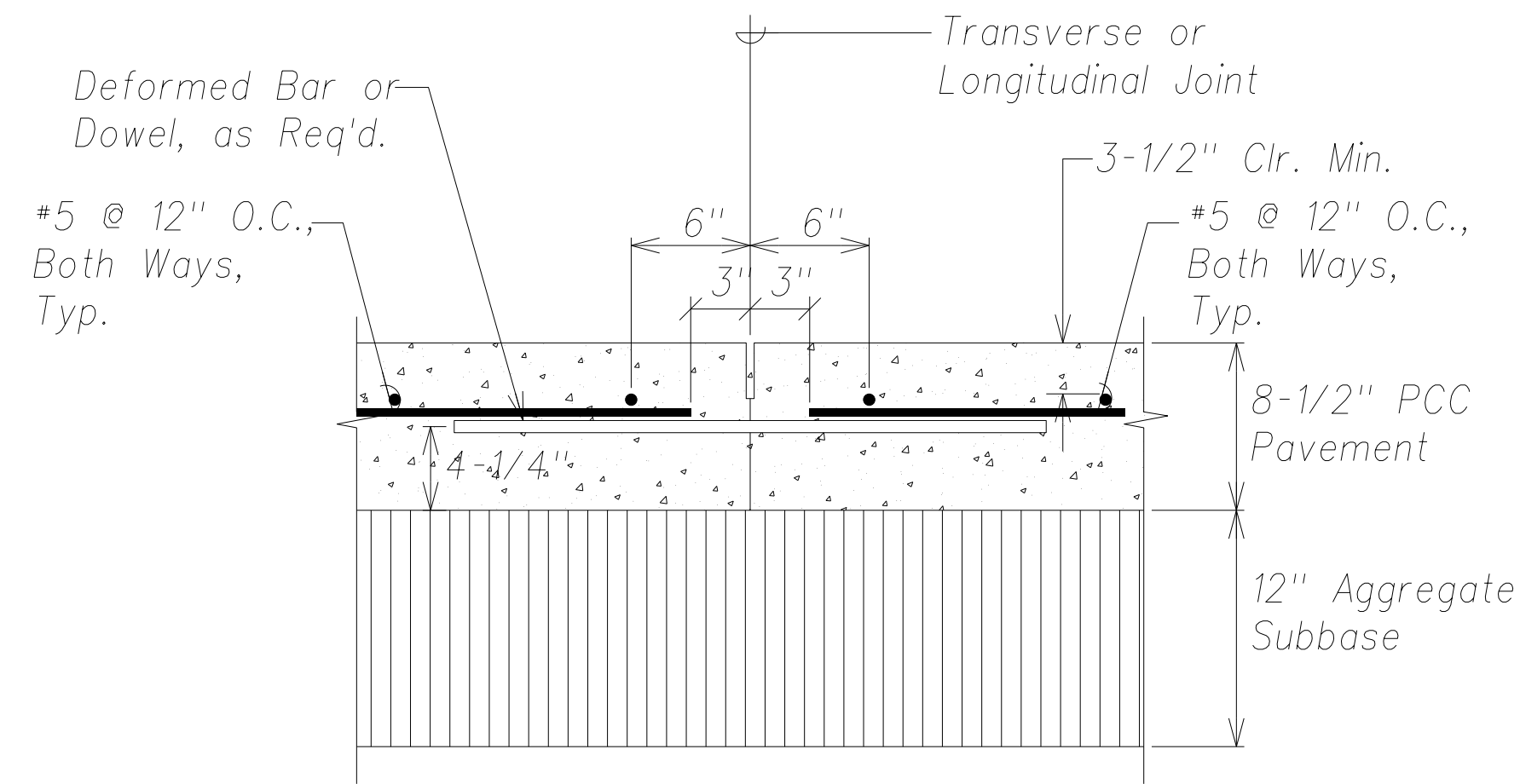
Model

FILE: c:\Users\lsaliba\Desktop\Drawing\dwg saved April 7, 2016

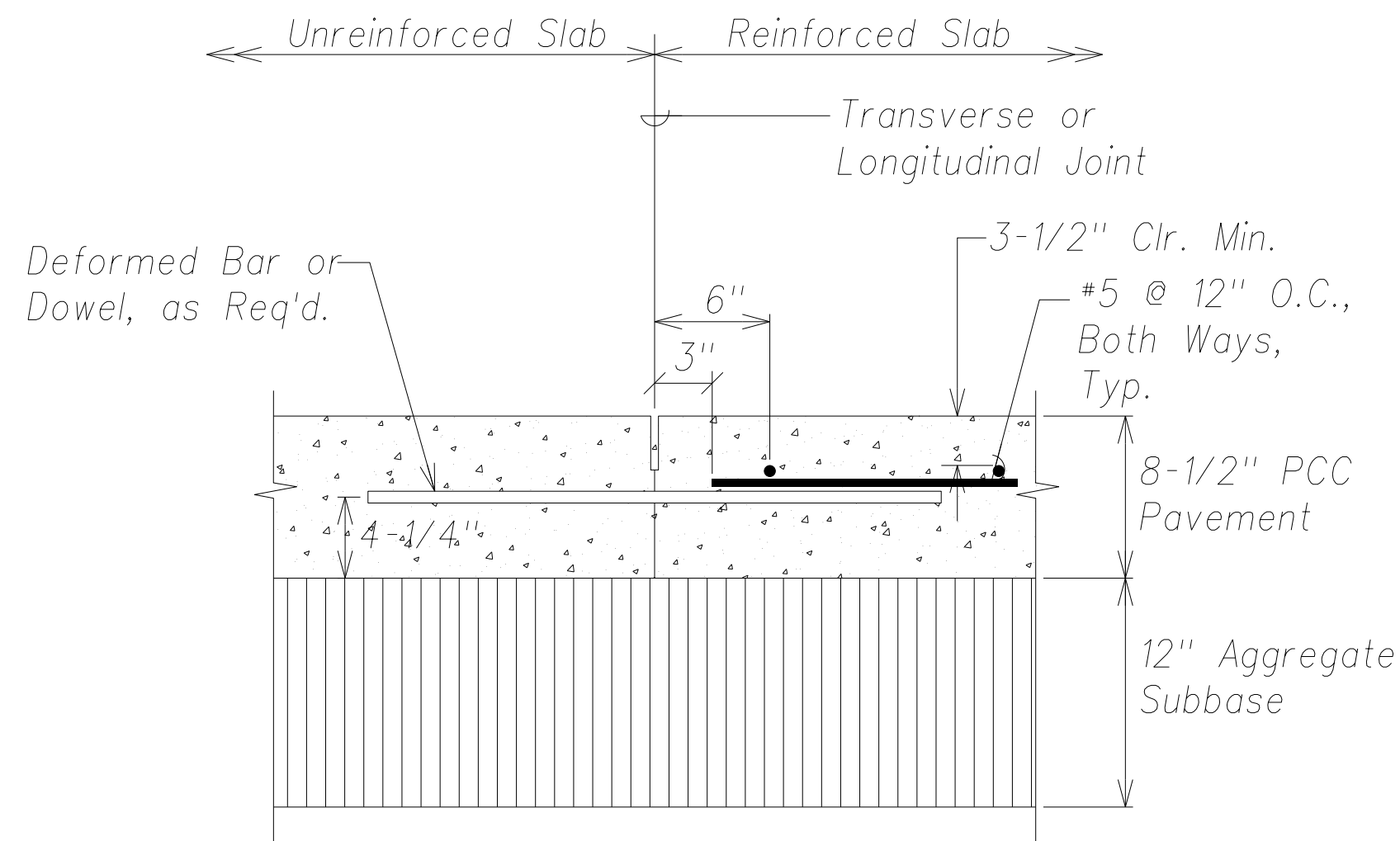
ORIGINAL PLAN	SURVEY PLOTTED BY _____	DATE _____
	DRAWN BY _____	_____
	DESIGNED BY _____	_____
	QUANTITIES BY _____	_____
NOTE BOOK	CHECKED BY _____	_____
	No. _____	_____

Odd-Shaped Slab Reinforcing Notes:

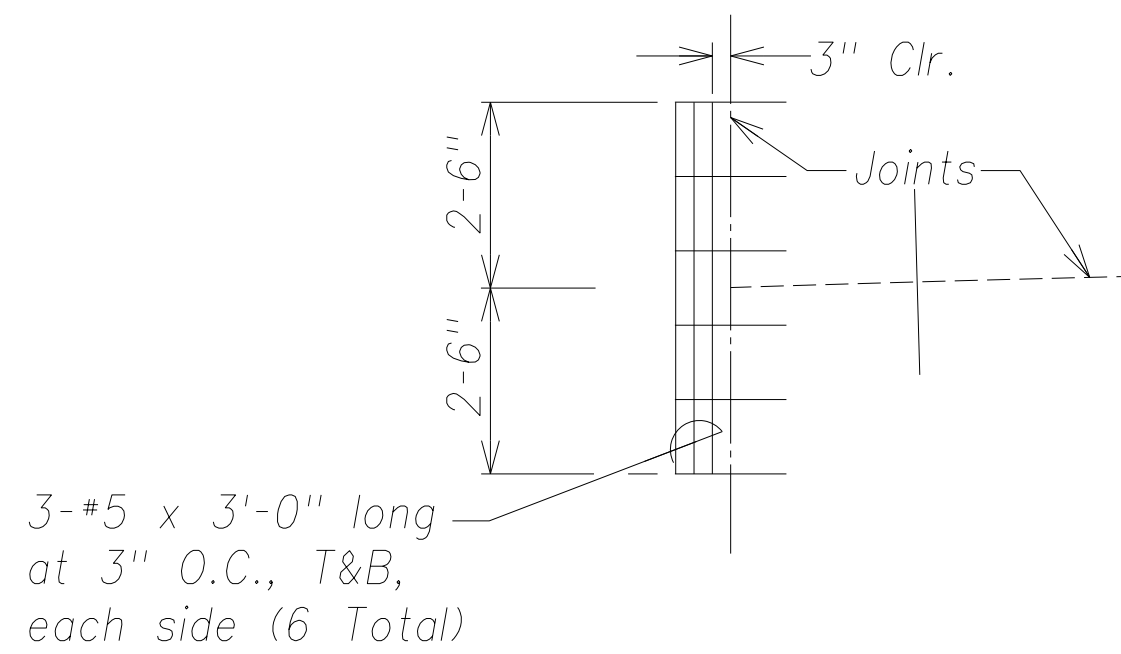
- For dowel or deformed bar details and joint construction details, see State Standard Plans D-18, D-19 and D-21.
- Reinforce odd shaped slabs: Slabs with ratio of length of one side to other side greater than 1.25 or less than 0.8; slabs with unmatched (or mismatched) joints; triangular shaped slabs; or slabs with at least one side larger than 15 feet.
- Slabs requiring reinforcing shall be reinforced with #5 deformed bars at 12" o.c., each way (transversely and longitudinally).



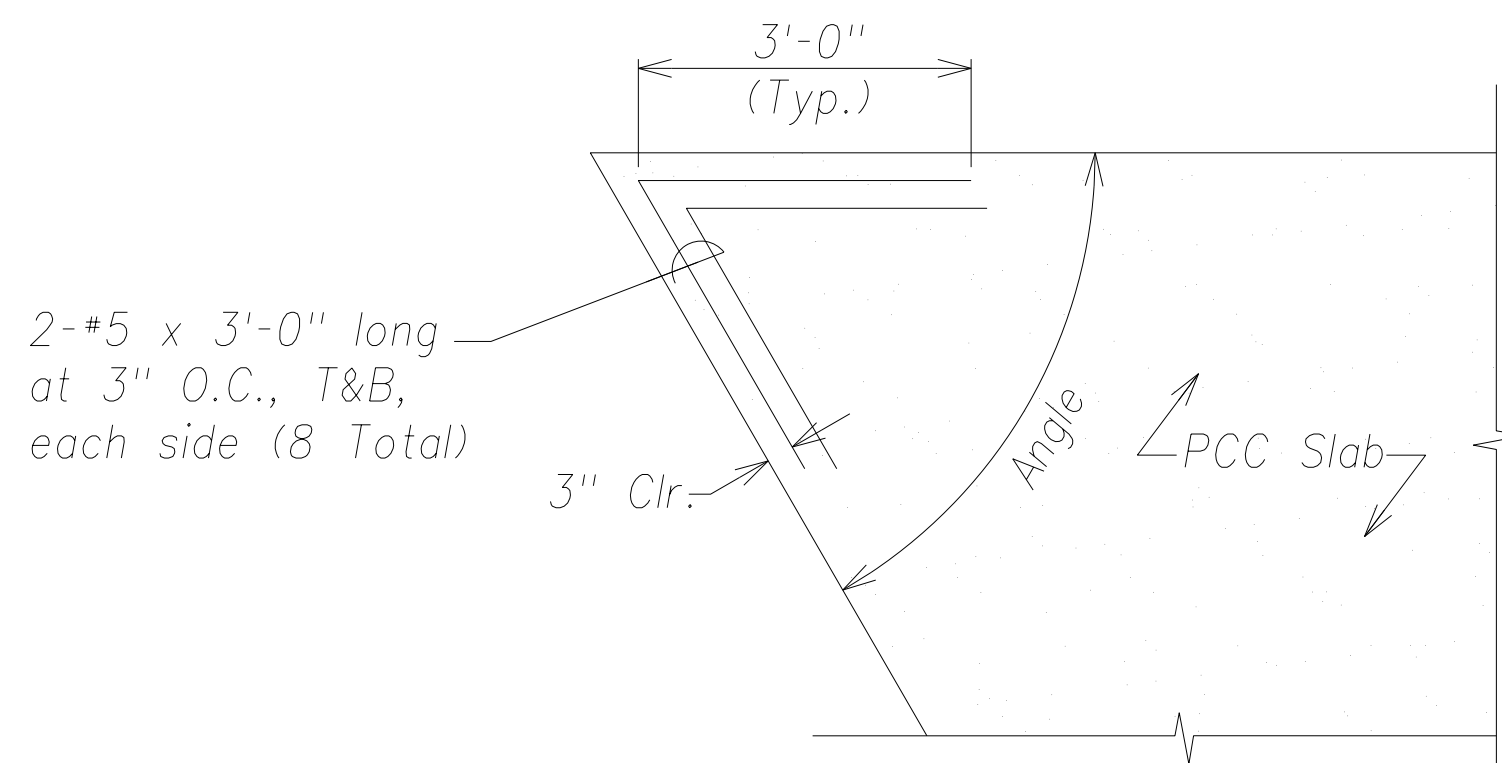
Typical Odd-Shaped PCC Pavement Reinforcing (At Reinforced Slab)
Not to Scale



Typical Odd-Shaped PCC Pavement Reinforcing (At Reinforced Slab)
Not to Scale

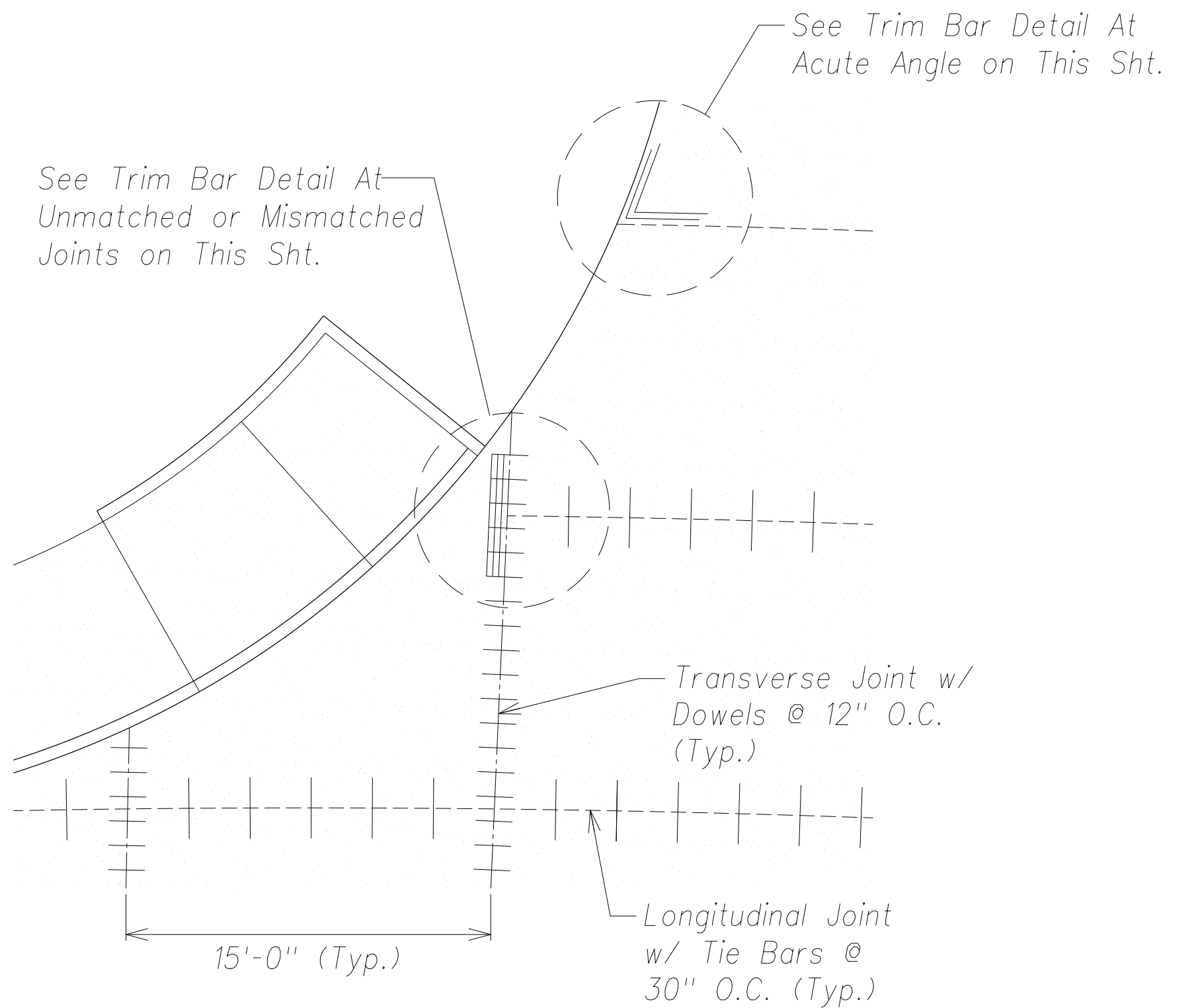


Typical Trim Bar Detail At Unmatched or Mismatched Joints
Not to Scale

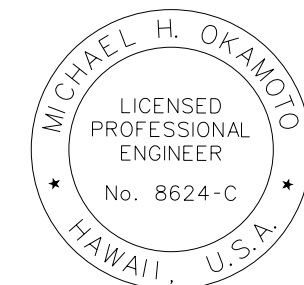


Typical Trim Bar Detail At Acute Angle (Less than 70°)
Not to Scale

FED. ROAD DIST. NO.	STATE	FED. AID PROJ. NO.	FISCAL YEAR	SHEET NO.	TOTAL SHEETS
HAWAII	HAW.	ARR-050-1(K036)	FY13/14	Model	141



Typical Added Trim Bar Detail
Not to Scale



THIS WORK WAS PREPARED BY ME
OR UNDER MY SUPERVISION AND
CONSTRUCTION OF THIS PROJECT
WILL BE UNDER MY OBSERVATION.

SIGNATURE _____
EXPIRATION DATE
OF THE LICENSE

STATE OF HAWAII DEPARTMENT OF TRANSPORTATION HIGHWAYS DIVISION
PAVEMENT JOINT DETAILS
PHASE 1 - KAUMUALII HIGHWAY LIHUE MILL BRIDGE TO RICE STREET
PHASE 3 - REHABILITATION OF LIHUE MILL BRIDGE AND MAKAI WIDENING
Scale: As Shown Date: May 2, 2014
SHEET No. C-56 OF 82 SHEETS

"AS-BUILT"

Model