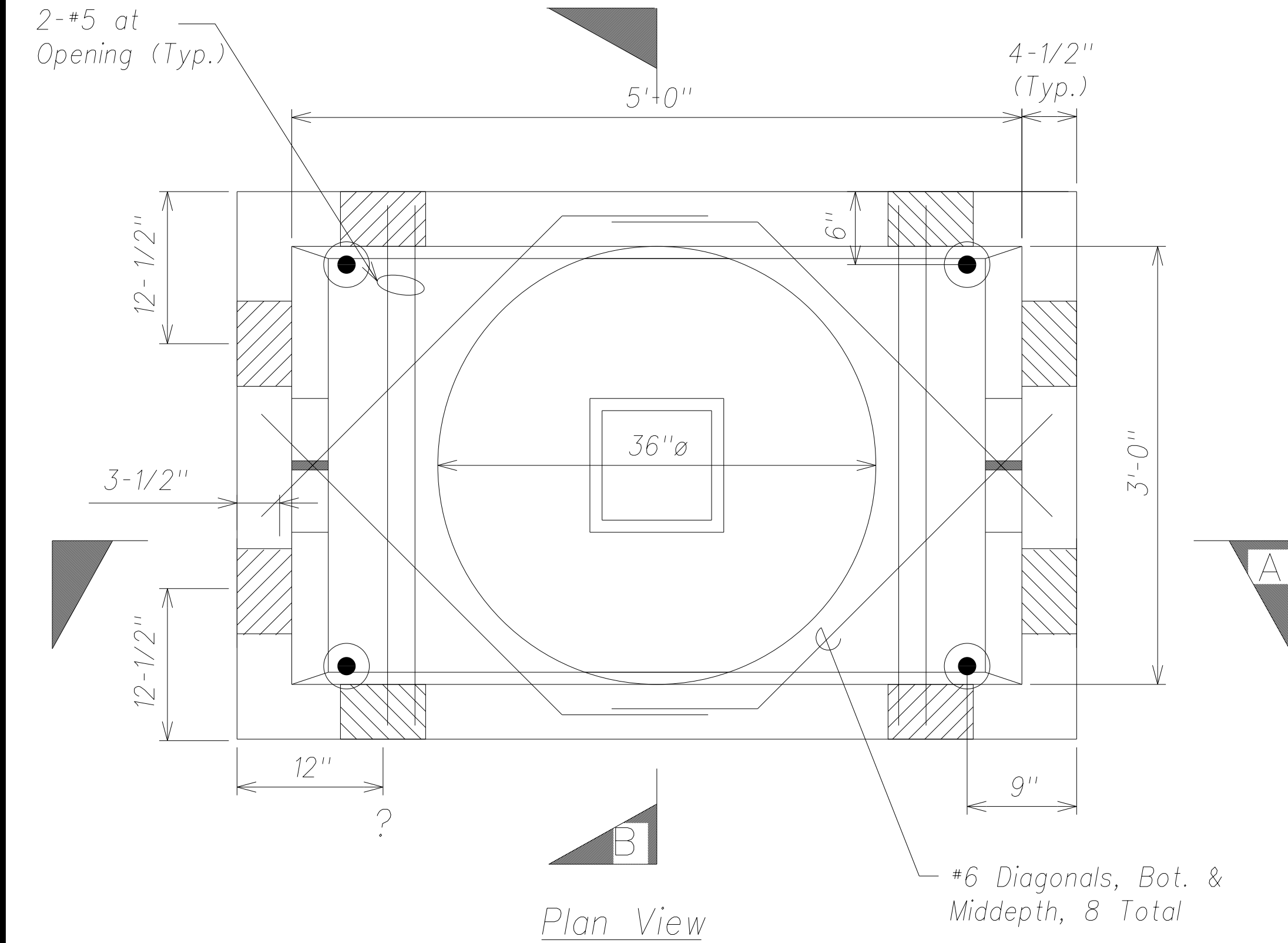
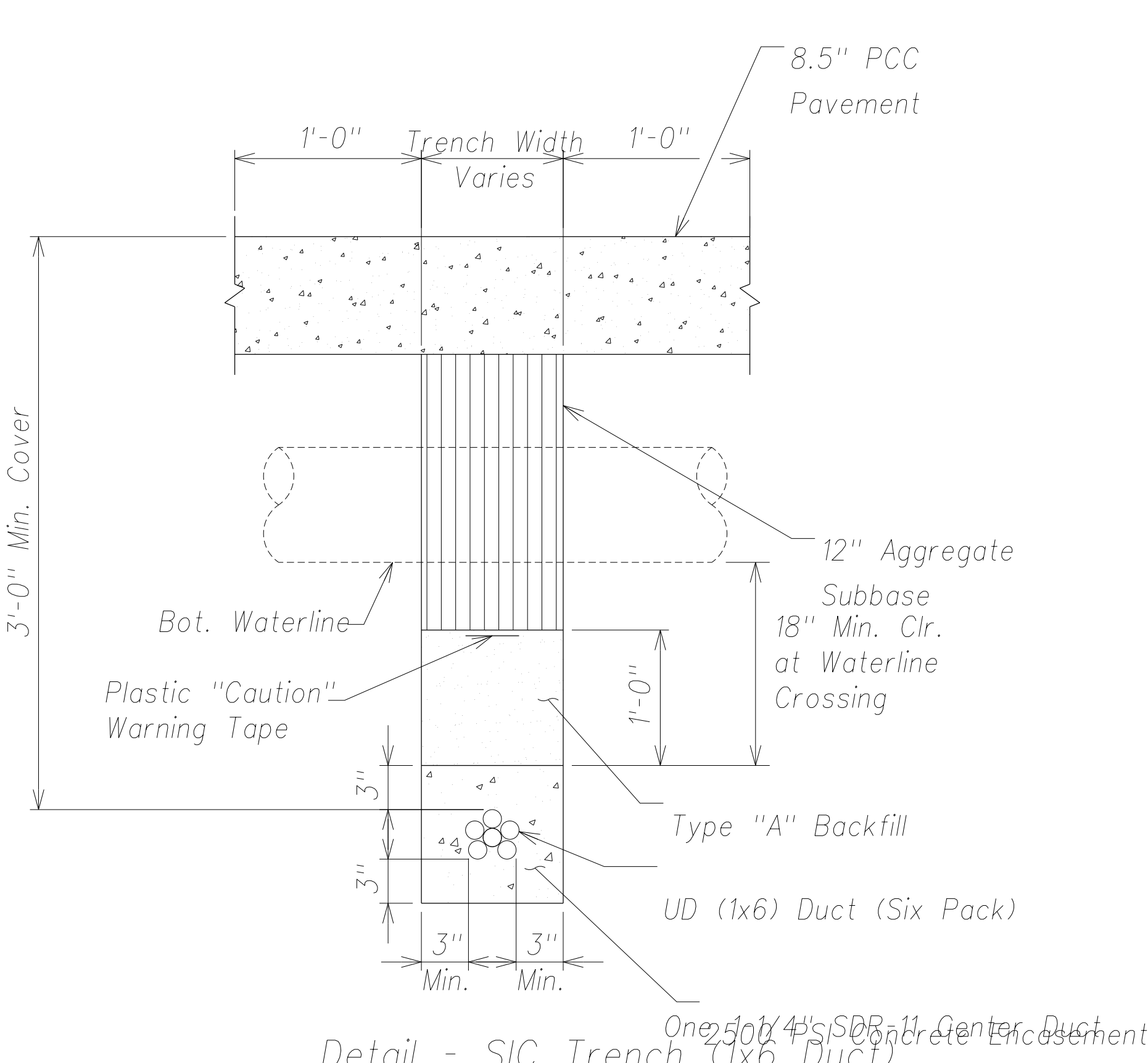


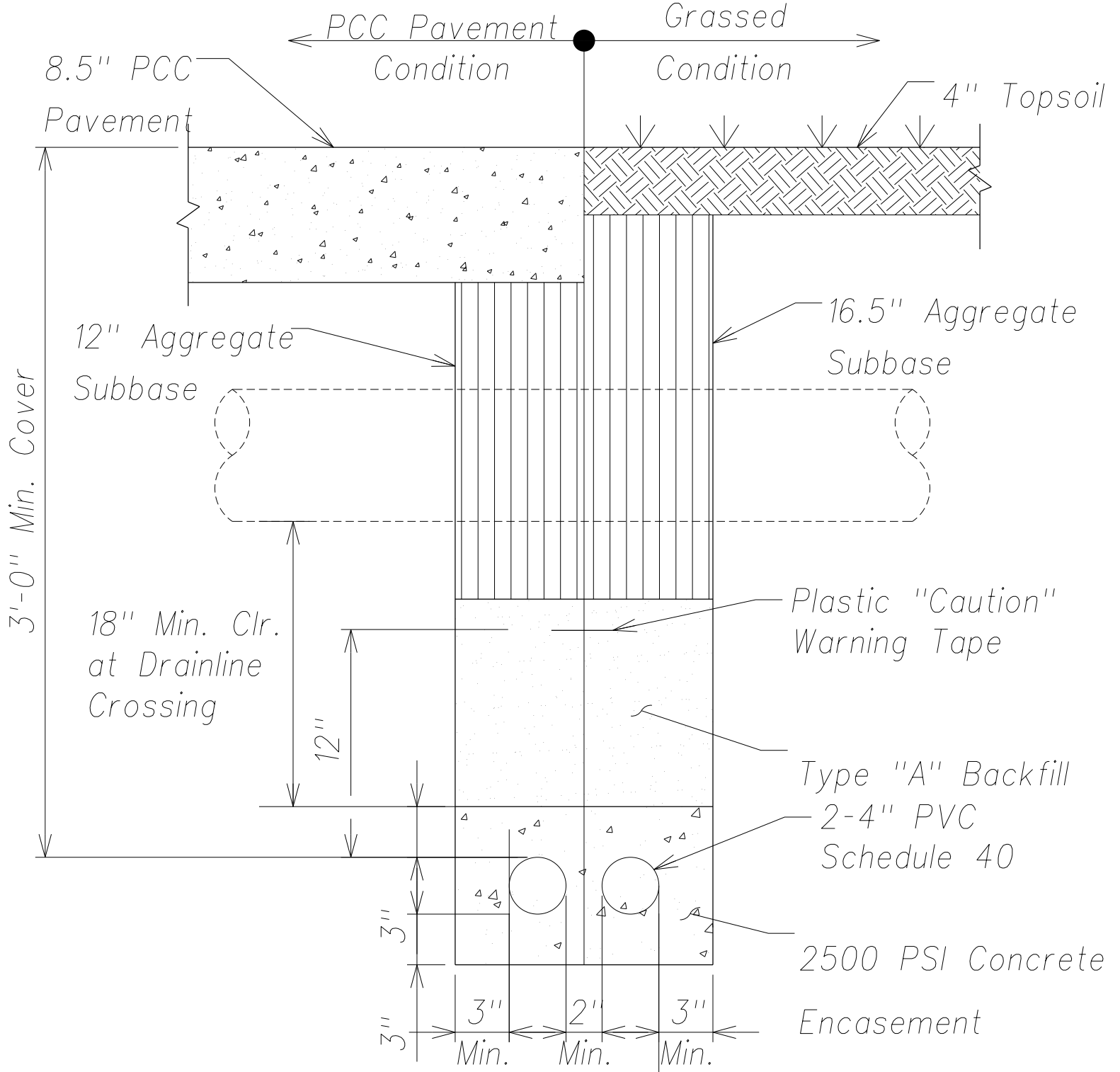
FED. ROAD DIST. NO.	STATE	FED. AID PROJ. NO.	FISCAL YEAR	SHEET NO.	TOTAL SHEETS
HAWAII	HAW.	ARR-050-1(036)	FY13/14	Model	141



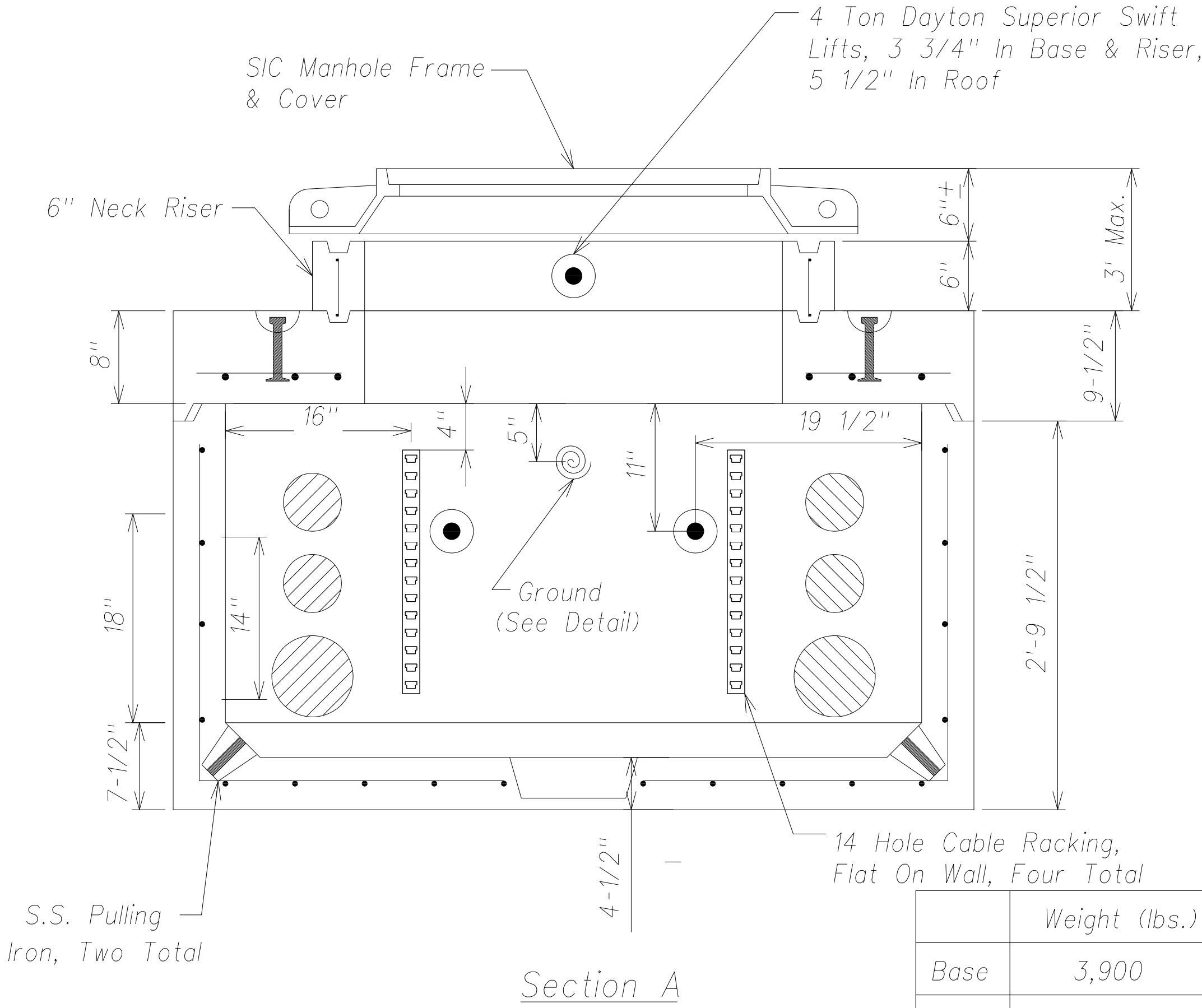
Detail - SIC 3'X5' Special Manhole
Not To Scale



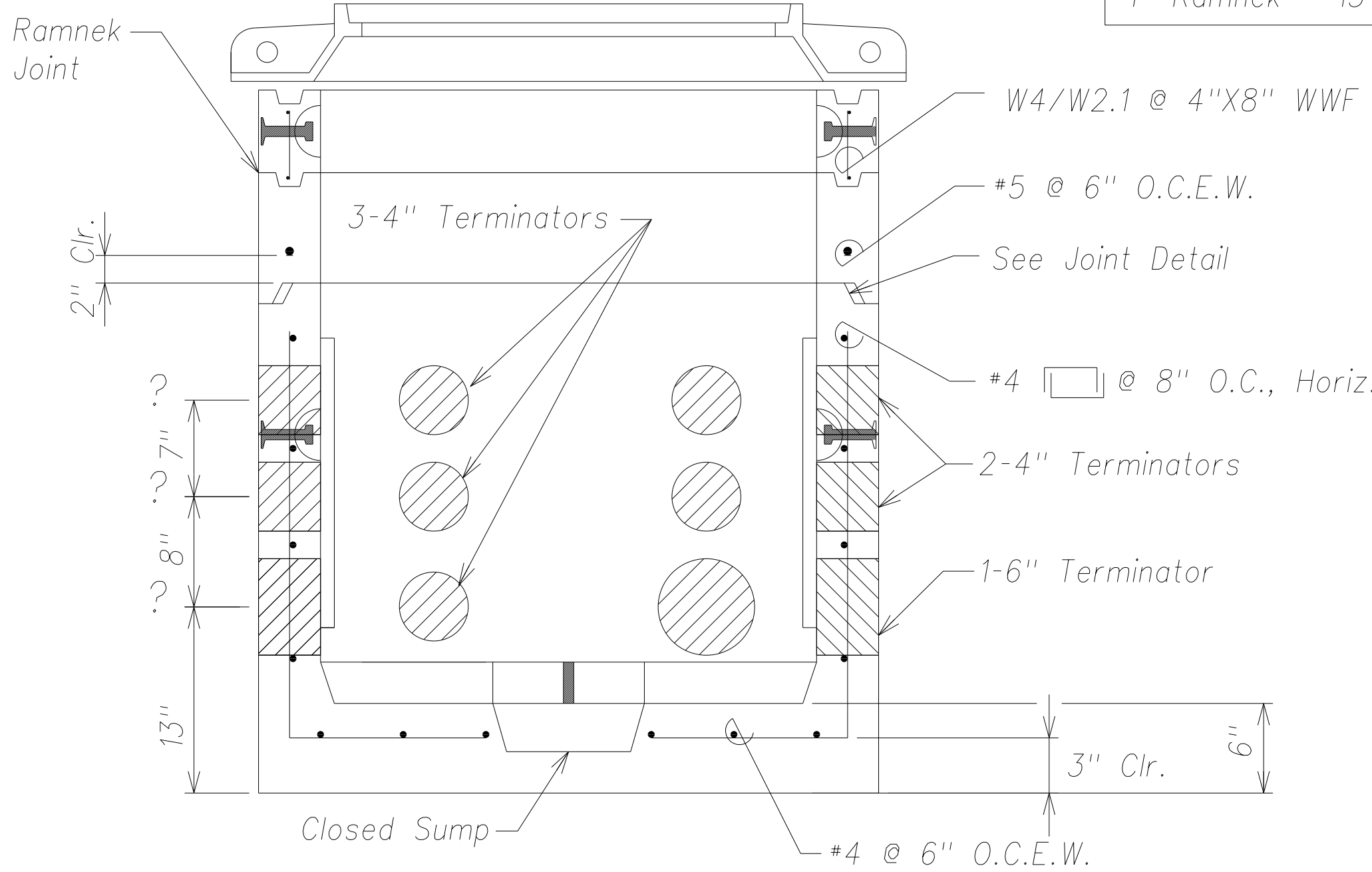
Detail - SIC Trench (1x6 Duct)
Not To Scale



Detail - SIC Trench (2x4 Duct)
Not To Scale

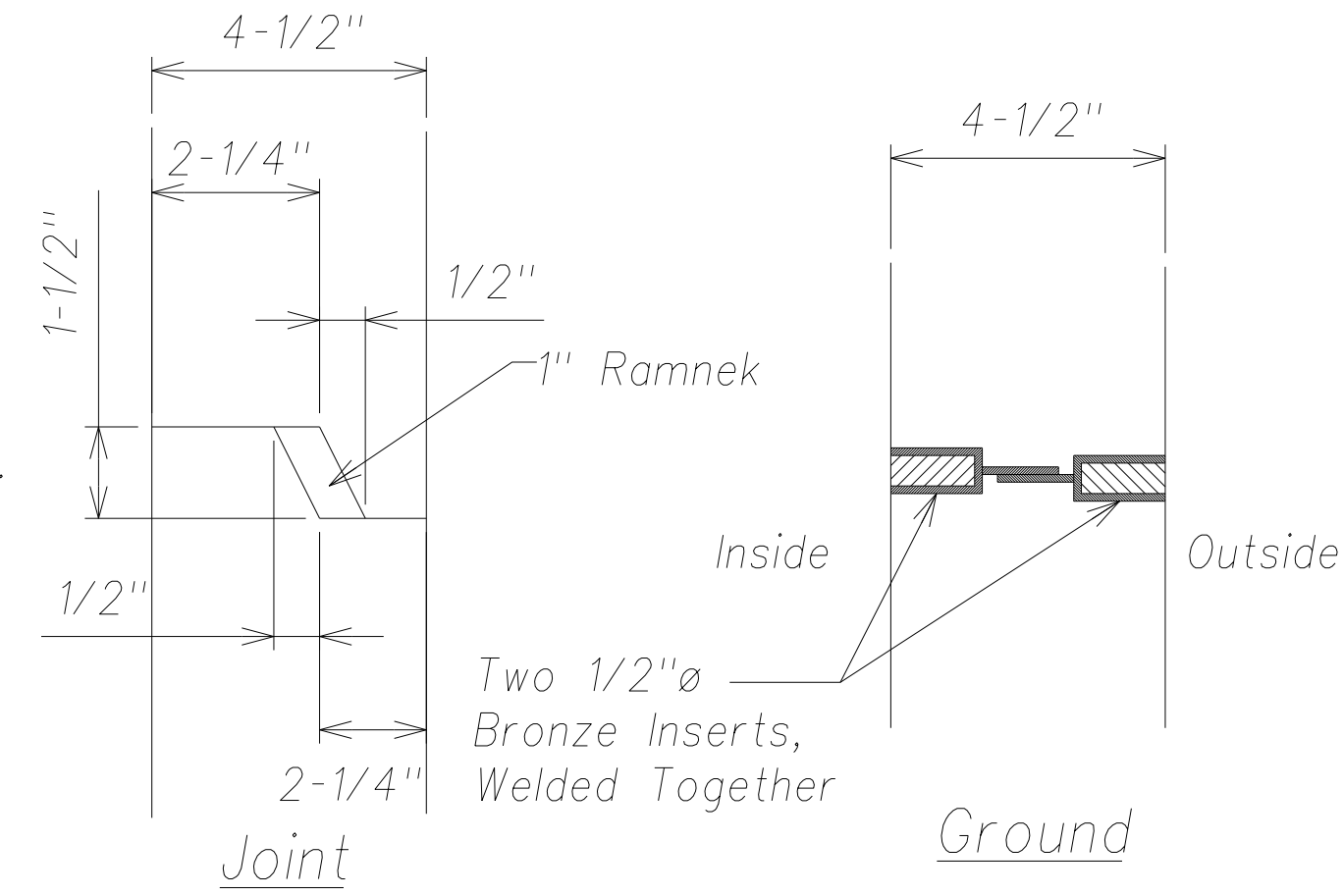


Section A



Section B
APPROVED BY:

Reinforcing = 163 lbs. (#4)
65 lbs. (#5)
60 lbs. (#6)
1" Ramnek = 13 ea.



STATE OF HAWAII
DEPARTMENT OF TRANSPORTATION
HIGHWAYS DIVISION

SIC DETAILS

PHASE 1 - KAUMUALII HIGHWAY
LIHUE MILL BRIDGE TO RICE STREET

PHASE 3 - REHABILITATION OF LIHUE MILL
BRIDGE AND MAKAI WIDENING

Scale: As Shown Date: May 2, 2014

SHEET No. C-62 OF 82 SHEETS

THIS WORK WAS PREPARED BY ME
OR UNDER MY SUPERVISION AND
CONSTRUCTION OF THIS PROJECT
WILL BE UNDER MY OBSERVATION.

April 30, 2016
SIGNATURE EXPIRATION DATE
OF THE LICENSE

SANDWICH ISLES COMMUNICATIONS, INC.

DATE

SIGNATURE

April 30, 2016
EXPIRATION DATE
OF THE LICENSE

"AS-BUILT"

MODEL

ORIGINAL PLAN	SURVEY PLOTTED BY	DATE
NOTE BOOK	DESIGNED BY	
	QUANTITIES BY	
	CHECKED BY	