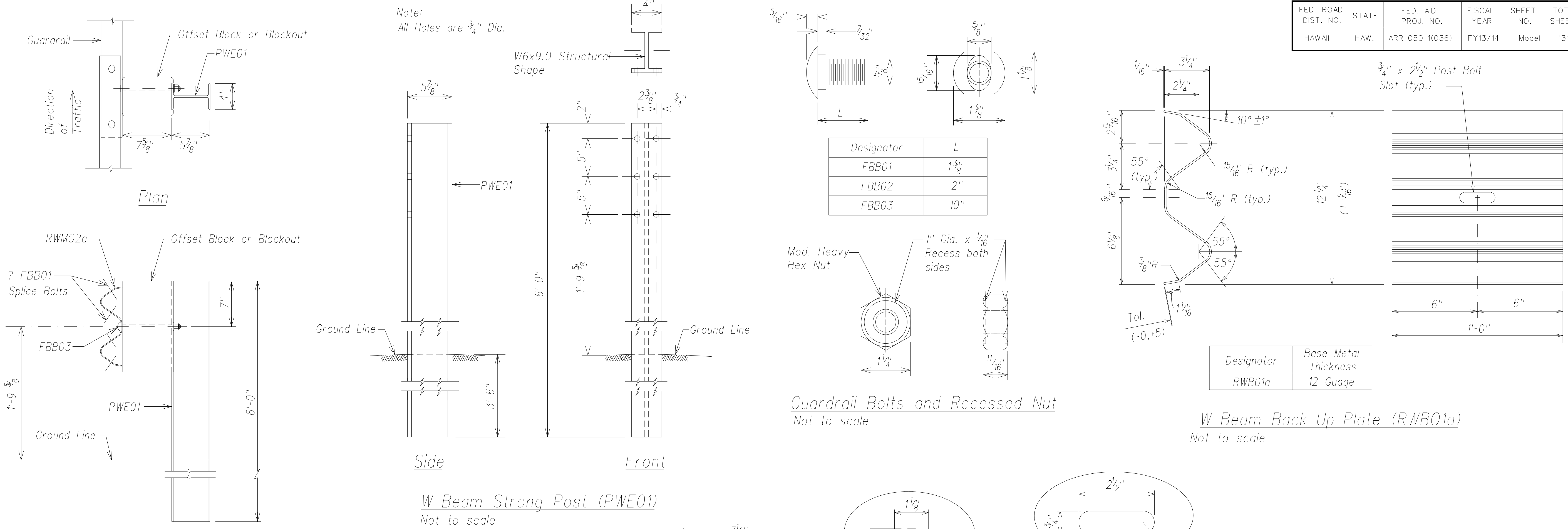
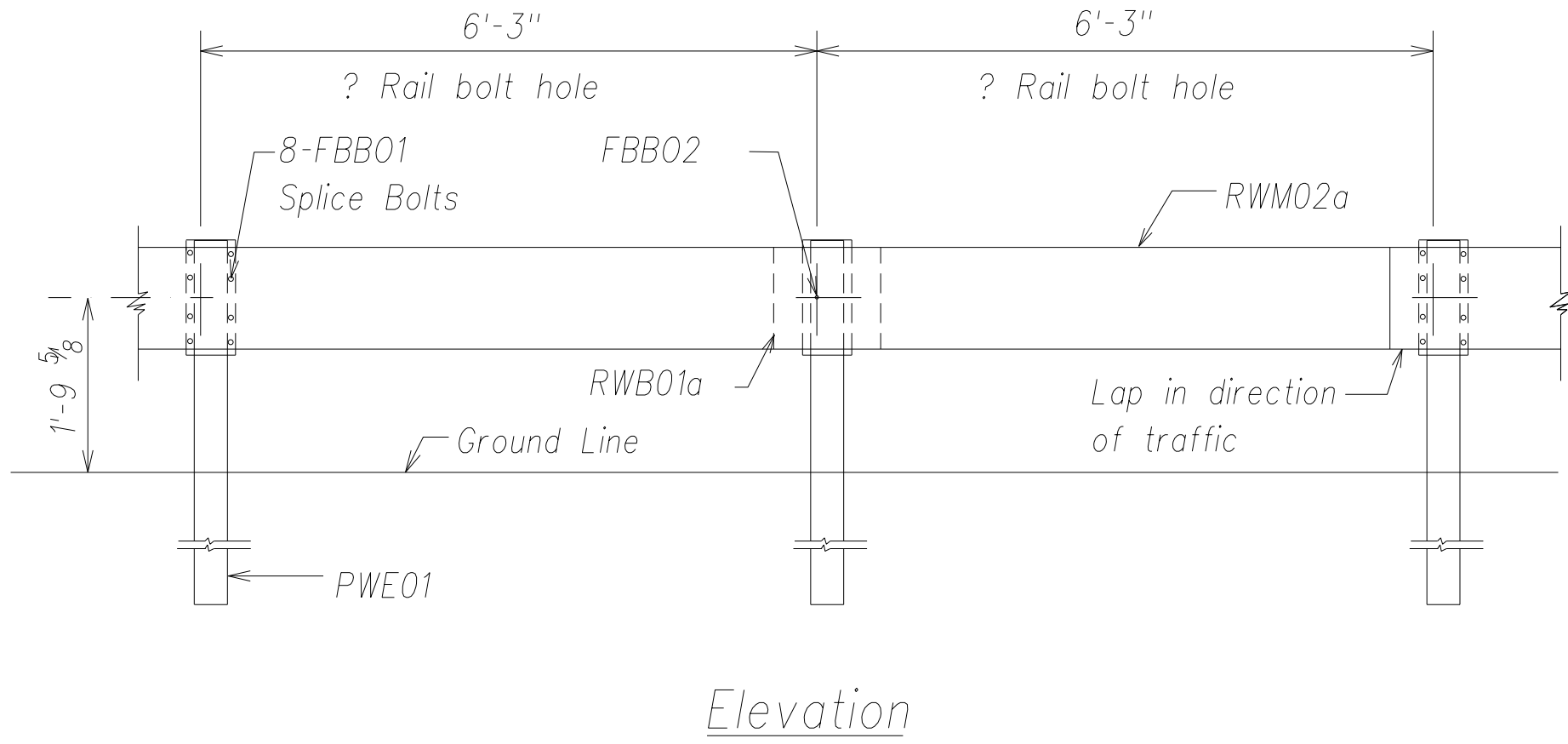


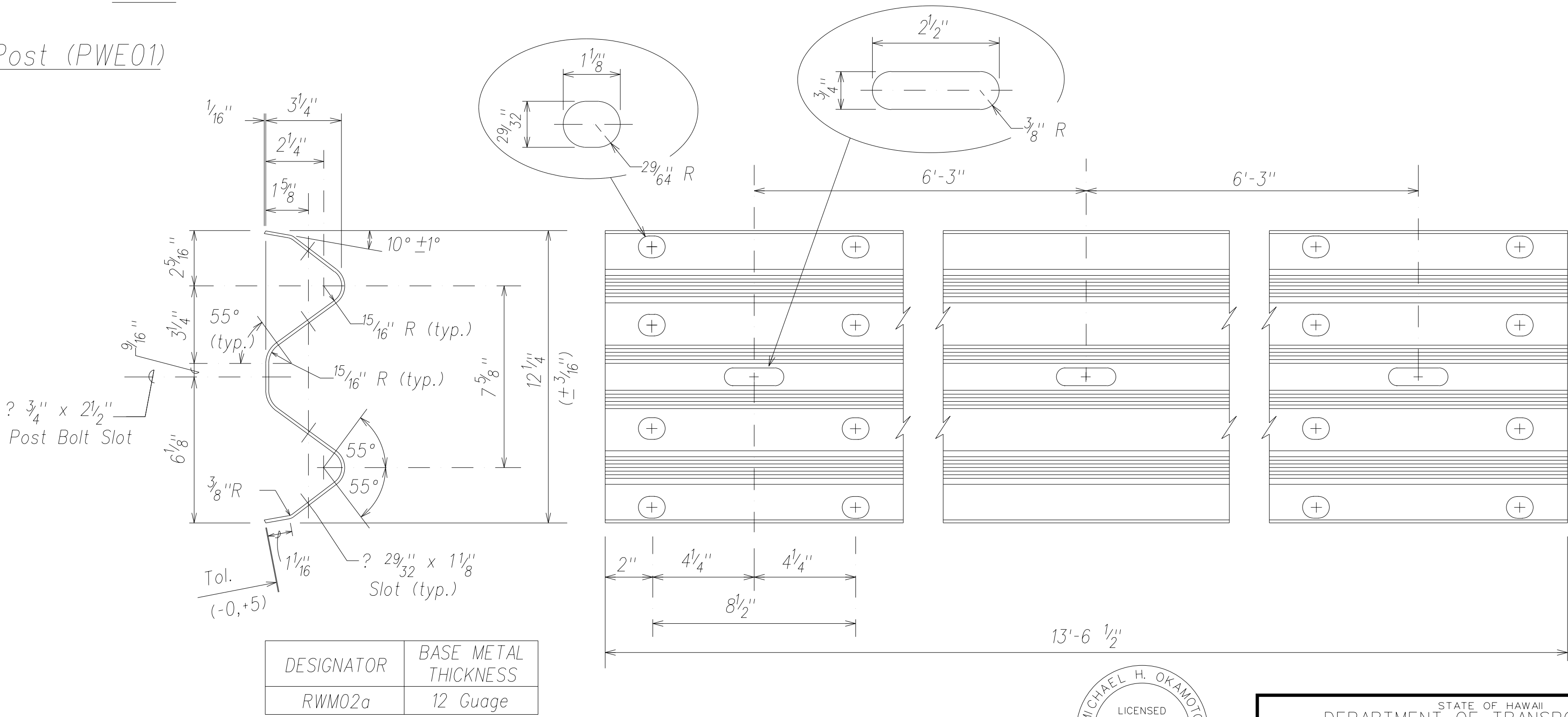
FED. ROAD DIST. NO.	STATE	FED. AID PROJ. NO.	FISCAL YEAR	SHEET NO.	TOTAL SHEETS
HAWAII	HAW.	ARR-050-1(036)	FY13/14	Model	131



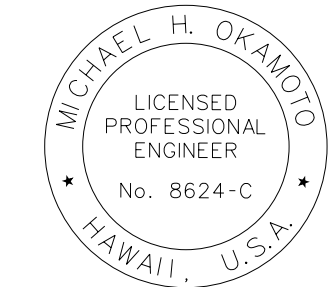
Strong Post W-Beam Guardrail (SGR04a)
Not to scale



Strong Post W-Beam Guardrail With
Recycled Offset Block or Plastic Blockout
Not to scale



ORIGINAL PLAN	SURVEY PLOTTED BY	DATE
	DRAWN BY	
	DESIGNED BY	
	QUANTITIES BY	
NOTE BOOK	CHECKED BY	
	No.	



THIS WORK WAS PREPARED BY ME
OR UNDER MY SUPERVISION AND
CONSTRUCTION OF THIS PROJECT
WILL BE UNDER MY OBSERVATION.

SIGNATURE

EXPIRATION DATE OF THE LICENSE

STATE OF HAWAII
DEPARTMENT OF TRANSPORTATION
HIGHWAYS DIVISION

STRONG POST W-BEAM
GUARDRAIL DETAILS

PHASE 1 - KAUMUALII HIGHWAY
LIHUE MILL BRIDGE TO RICE STREET

PHASE 2 - NAWILIWILI STREAM BRIDGE
AND MAUKA WIDENING

Scale: As Shown

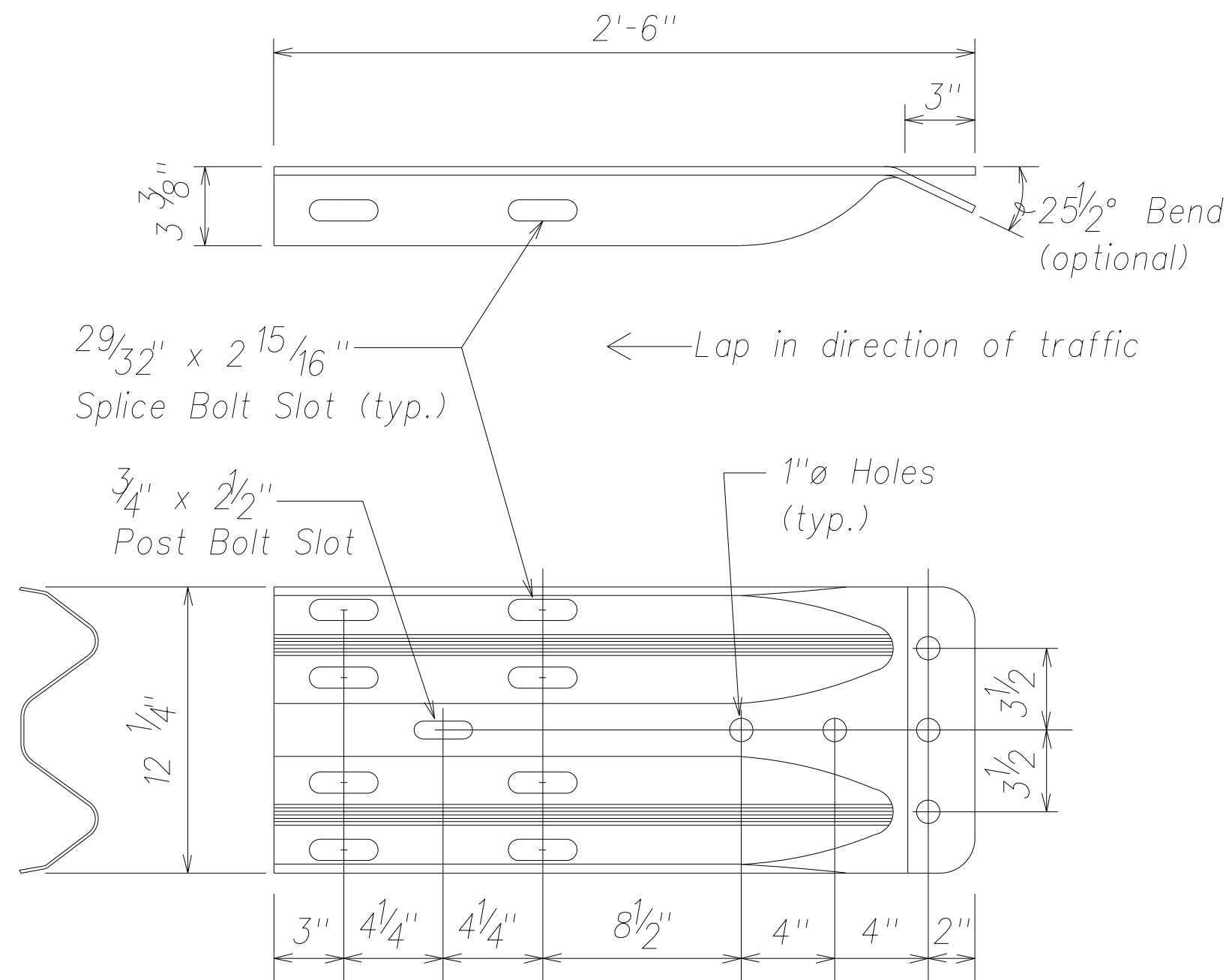
Date: March 25, 2013

SHEET No. C-64 OF 84 SHEETS

"AS-BUILT"

Model

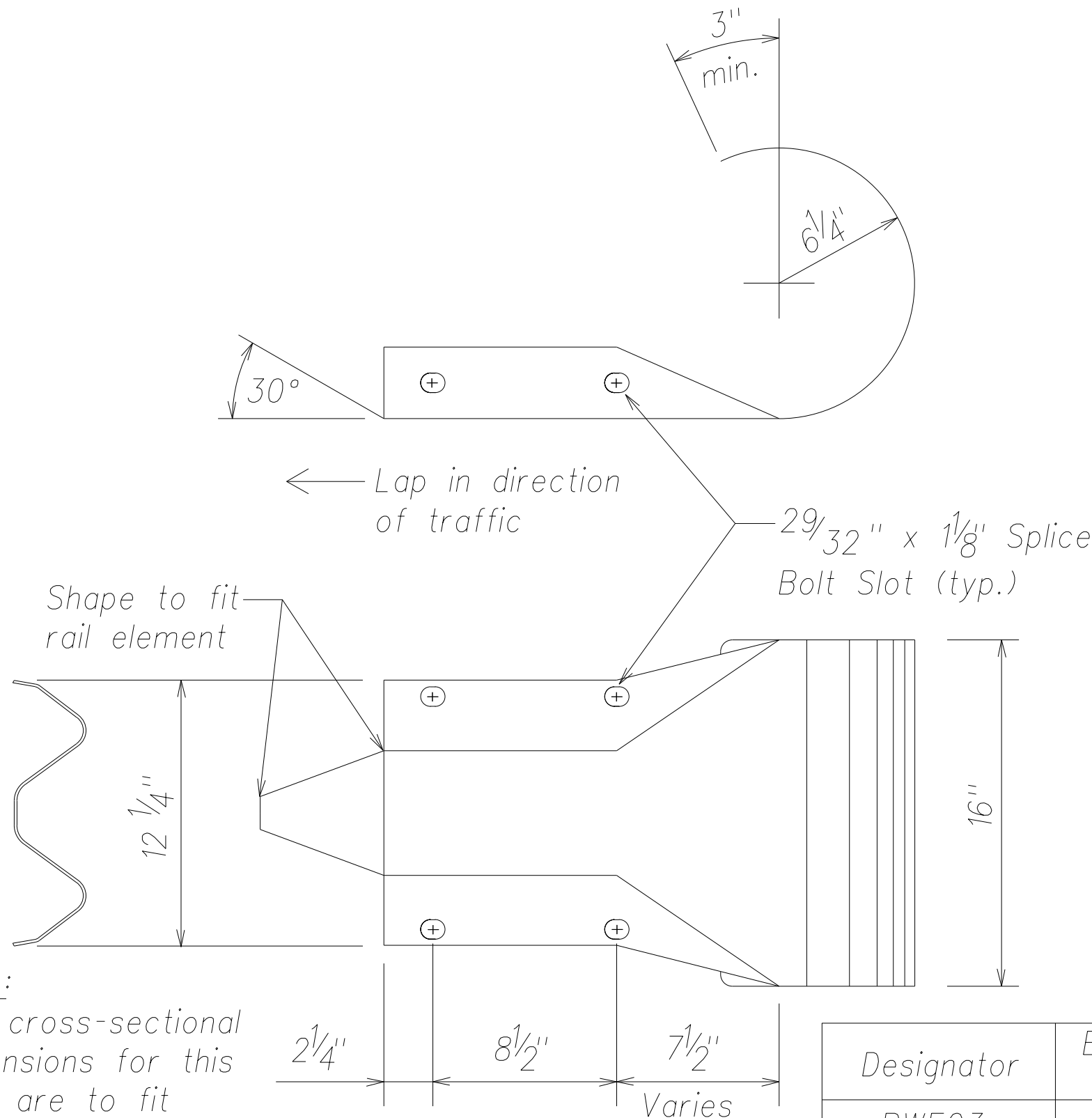
FED. ROAD DIST. NO.	STATE	FED. AID PROJ. NO.	FISCAL YEAR	SHEET NO.	TOTAL SHEETS
HAWAII	HAW.	ARR-050-1(036)	FY13/14	Model	131



Note:
The cross-sectional dimensions for this part are to fit over part RWM02b on the approach end and under part RWM02b on the trailing end.

Designator	Base Metal Thickness
RWE02b	10 Gauge

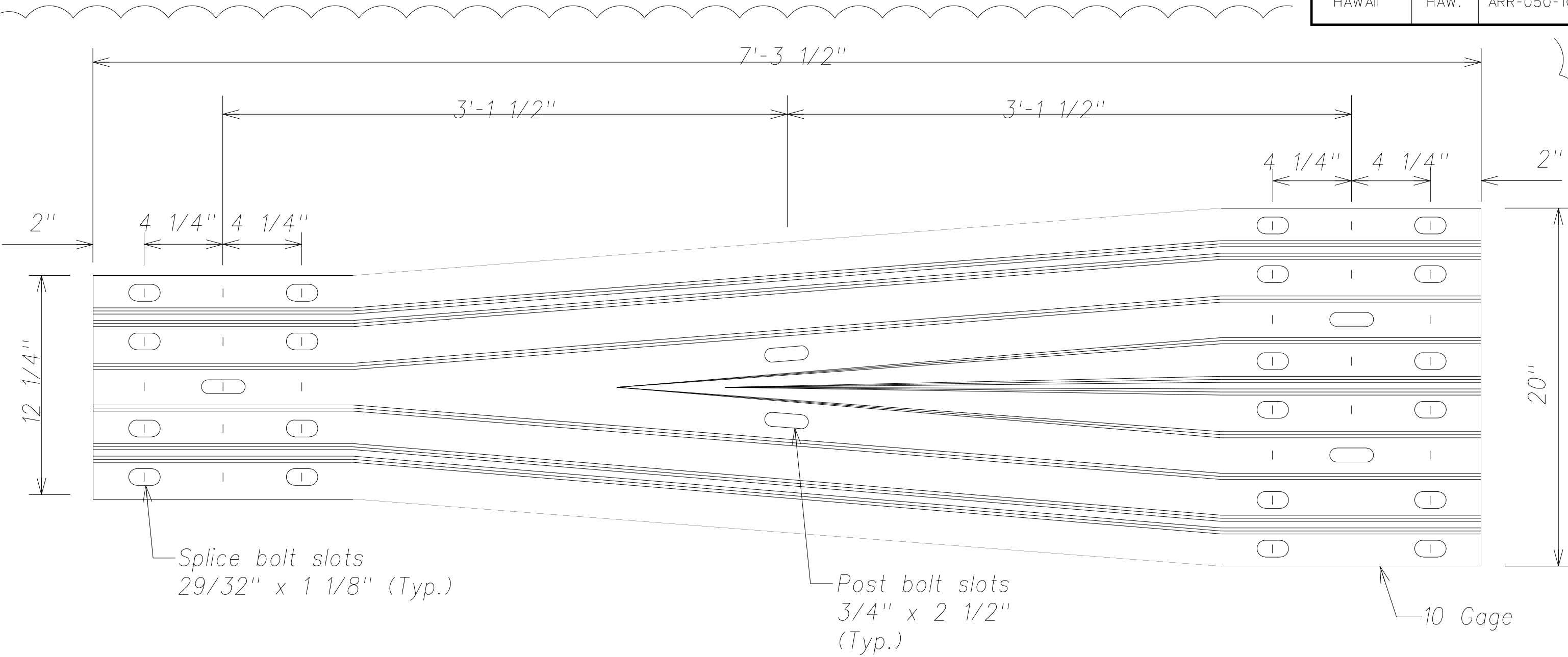
W-Beam Terminal Connector (RWE02b)
Not to Scale



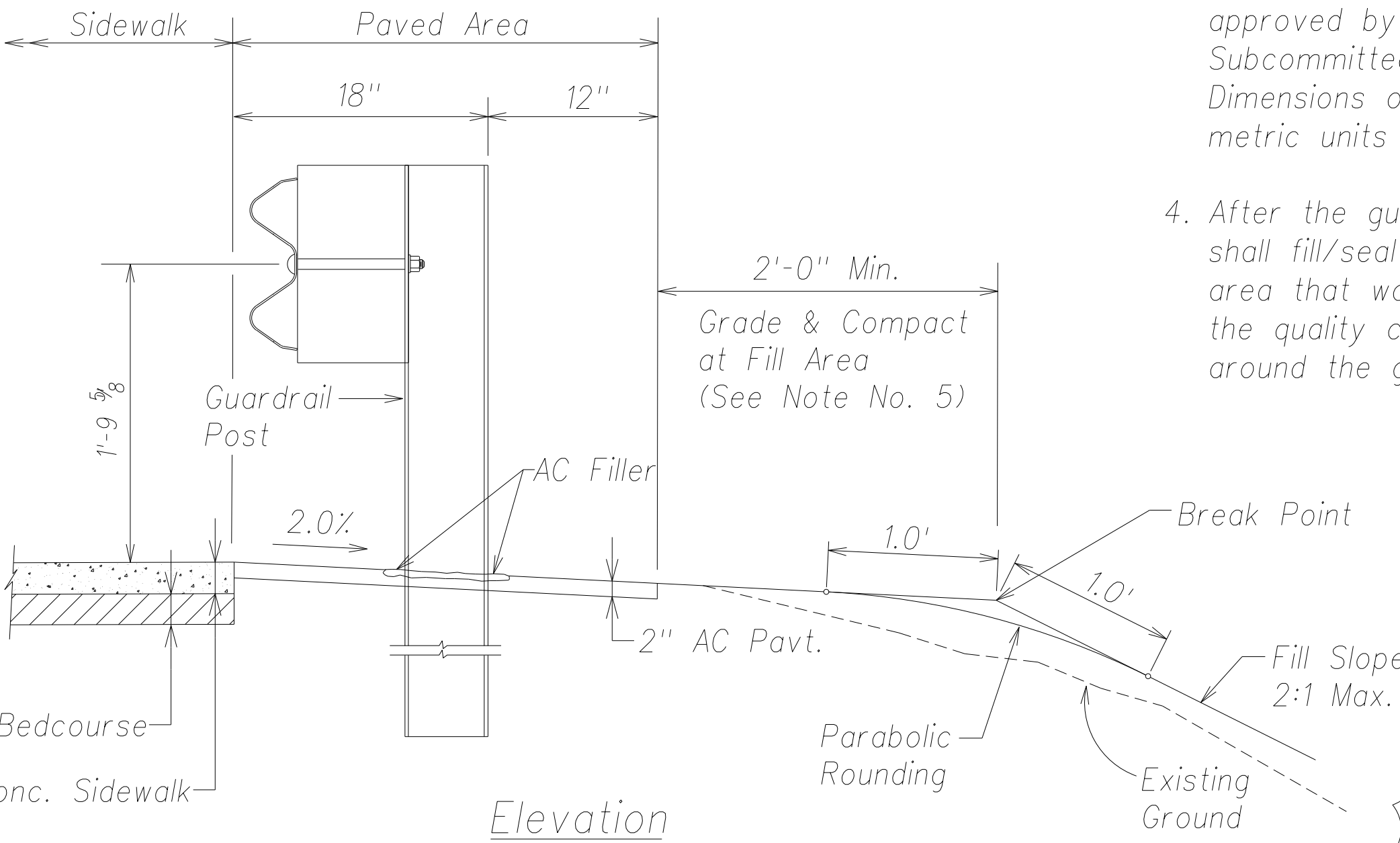
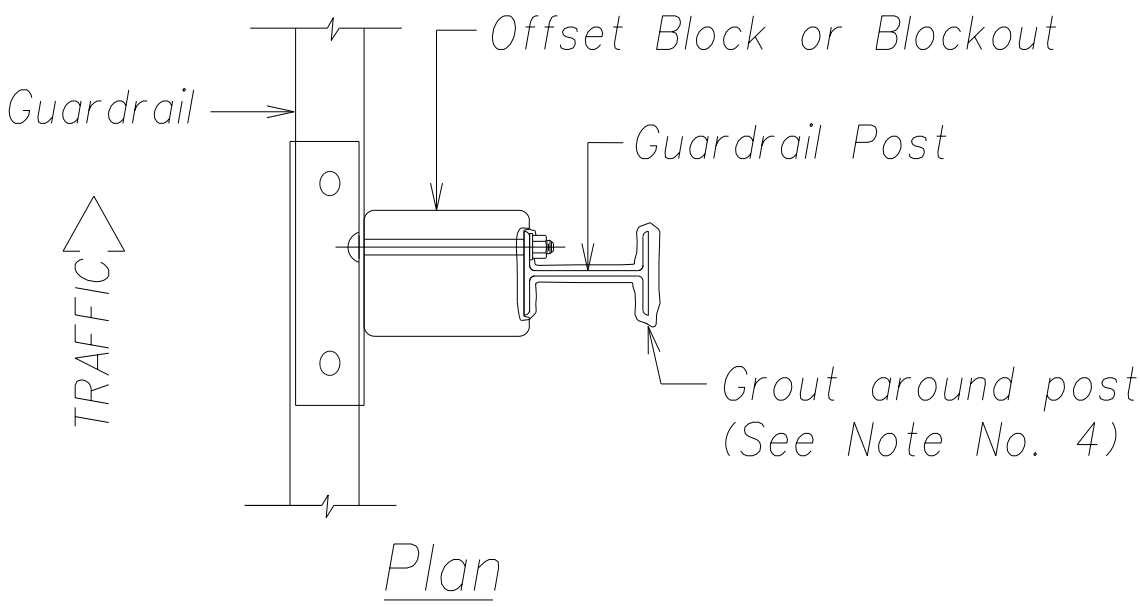
Note:
The cross-sectional dimensions for this part are to fit over part RWM02b

Designator	Base Metal Thickness
RWE03a	12 Gauge

W-Beam End Section (Rounded RWE03a)
Not to Scale



Three Beam to W-Beam Transition
Not to Scale



Elevation

Typical Guardrail Installation
Not to Scale

General Notes:

- All hardware, posts and fasteners shall be hot-dip zinc coated galvanized after fabrication. No punching, drilling or cutting will be permitted after galvanizing.
- Where conditions require, special post lengths in increments of 6 inches may be specified.
- All fasteners, posts, and rail elements (i.e. FBB03, PWE01, RWM02a, etc.) shall conform to the latest edition and amendments of "A Guide to Standardized Highway Barrier Rail Hardware," a report prepared and approved by the AASHTO-AGC-ARTBA Joint Cooperative Committee, Subcommittee On New Highway Materials, Task Force 13 Report. Dimensions of fastners, posts and rail elements have been converted from metric units into their present form.
- After the guardrail posts are installed in the paved area, the Contractor shall fill/seal around the guardrail post and seal all cracks in the paved area that was caused during the guardrail post installation. If required by the quality control engineer, the Contractor shall tamper the paved area around the guardrail post prior to filling/sealing.

ORIGINAL PLAN	NO. _____	DATE _____	DESIGNED BY _____	CHECKED BY _____	QUANTITIES BY _____	DRAWN BY _____	SURVEY PLOTTED BY _____



THIS WORK WAS PREPARED BY ME OR UNDER MY SUPERVISION AND CONSTRUCTION OF THIS PROJECT WILL BE UNDER MY OBSERVATION.
SIGNATURE _____
EXPIRATION DATE OF THE LICENSE April 30, 2016

07/30/14	Revise detail
Date	Revision
STATE OF HAWAII DEPARTMENT OF TRANSPORTATION HIGHWAYS DIVISION	
STRONG POST W-BEAM GUARDRAIL DETAILS	
PHASE 1 - KAUMUALII HIGHWAY LIHUE MILL BRIDGE TO RICE STREET	
PHASE 2 - NAWILIWILI STREAM BRIDGE AND MAUKA WIDENING	
Scale: As Shown	Date: March 25, 2013