

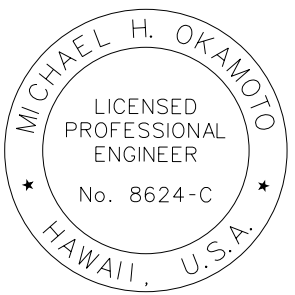
FED. ROAD DIST. NO.	STATE	FED. AID PROJ. NO.	FISCAL YEAR	SHEET NO.	TOTAL SHEETS
HAWAII	HAW.	ARR-050-1(036)	FY13/14	Model	131



Frame and Cover
Not to Scale

Site Design Data

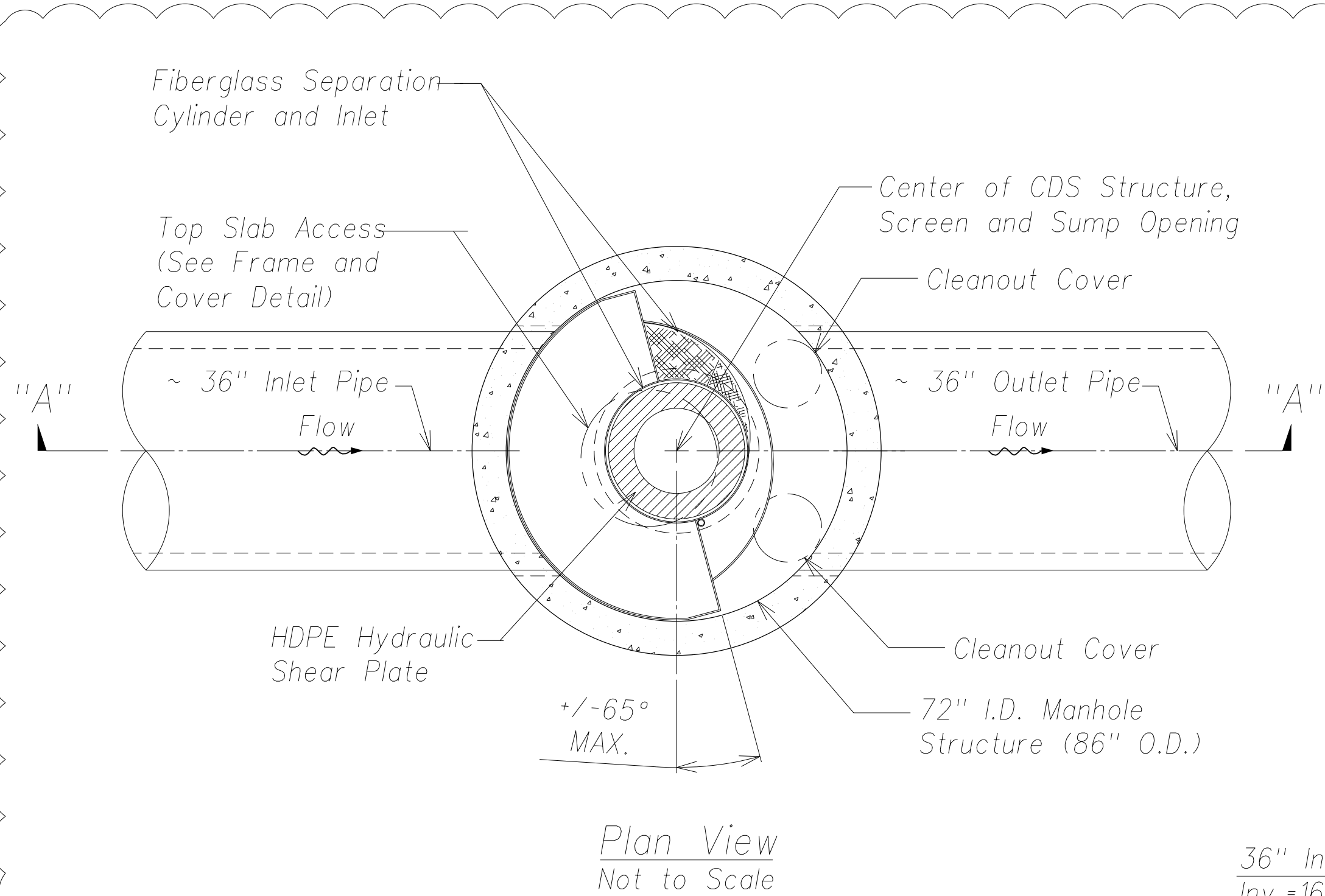
Water Quality Flow Rate (WQFR)	1.62 CFS
Peak Flow Rate	30.06 CFS
Storm Recurrence Interval	25 Years



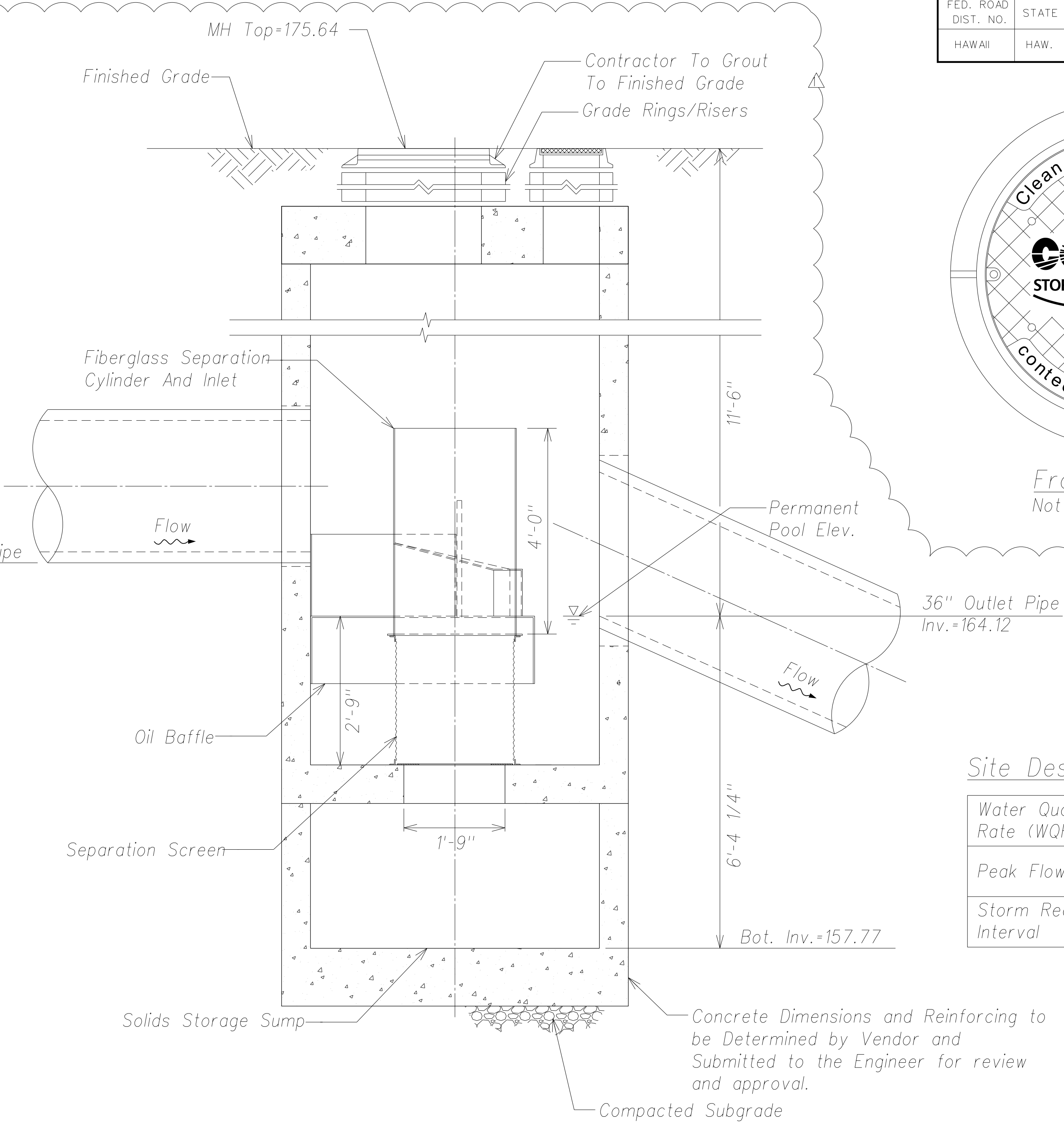
THIS WORK WAS PREPARED BY ME OR UNDER MY SUPERVISION AND CONSTRUCTION OF THIS PROJECT WILL BE UNDER MY OBSERVATION.

SIGNATURE _____
EXPIRATION DATE OF THE LICENSE _____

07/30/14	Revise detail
Date	Revision
STATE OF HAWAII DEPARTMENT OF TRANSPORTATION HIGHWAYS DIVISION	
STORM WATER QUALITY MANHOLE DETAILS	
PHASE 1 - KAUMUALII HIGHWAY LIHUE MILL BRIDGE TO RICE STREET	
PHASE 2 - NAWILIWILI STREAM BRIDGE AND MAUKA WIDENING	
Scale: As Shown	Date: March 25, 2013
SHEET No. C-55 OF 84 SHEETS	



Plan View
Not to Scale



Section "A-A"
Not to Scale

General Notes:

1. Contech to provide all materials unless noted otherwise.
2. For fabrication drawings with detailed structure dimensions and weight, please contact your Contech Representative. www.contech-cpi.com
3. CDS water quality structure shall be in accordance with all design data and information contained in this drawing. Contractor to confirm structure meets requirements of project.
4. Structure shall meet AASHTO HS-20 load rating. Castings shall meet AASHTO M306, cast with the Contech Stormwater Solutions logo.
5. PVC hydraulic shear plate is placed on shelf at bottom of screen cylinder. Remove and replace as necessary during maintenance cleaning.

Installation Notes:

1. Any sub-base, backfill depth, and/or anti-flotation provisions are site-specific design considerations and shall be specified by Engineer of record.
2. Contractor to provide equipment with sufficient lifting and reach capacity to lift and set the CDS manhole structure.
3. Contractor to install joint sealant between all structure sections and assemble structure.
4. Contractor to provide, install, and grout pipes. Match pipe inverts with elevations shown.
5. Contractor to take appropriate measures to assure unit is water tight, holding water to flowline invert minimum. All joints below pipe inverts shall be grouted.

Materials List

Count	Description	Installed By
1	Fiberglass Inlet & Cylinder	Contech
1	2400 Micron Separation Screen	Contech
1	Sealant for Joints	Contractor
1	Grade Rings/Risers	Contractor
1	ø24" Frame and Cover	Contractor
1	ø12"X4" Cleanout Cover	Contractor

Contech CDS3020-6-C-4800360-10

Storm Water Quality Manhole Details
Not to Scale

ORIGINAL PLAN	NO.	DATE	SURVEY PLOTTED BY	DRAWN BY	DESIGNED BY	CHECKED BY

"AS-BUILT"

MODEL S1